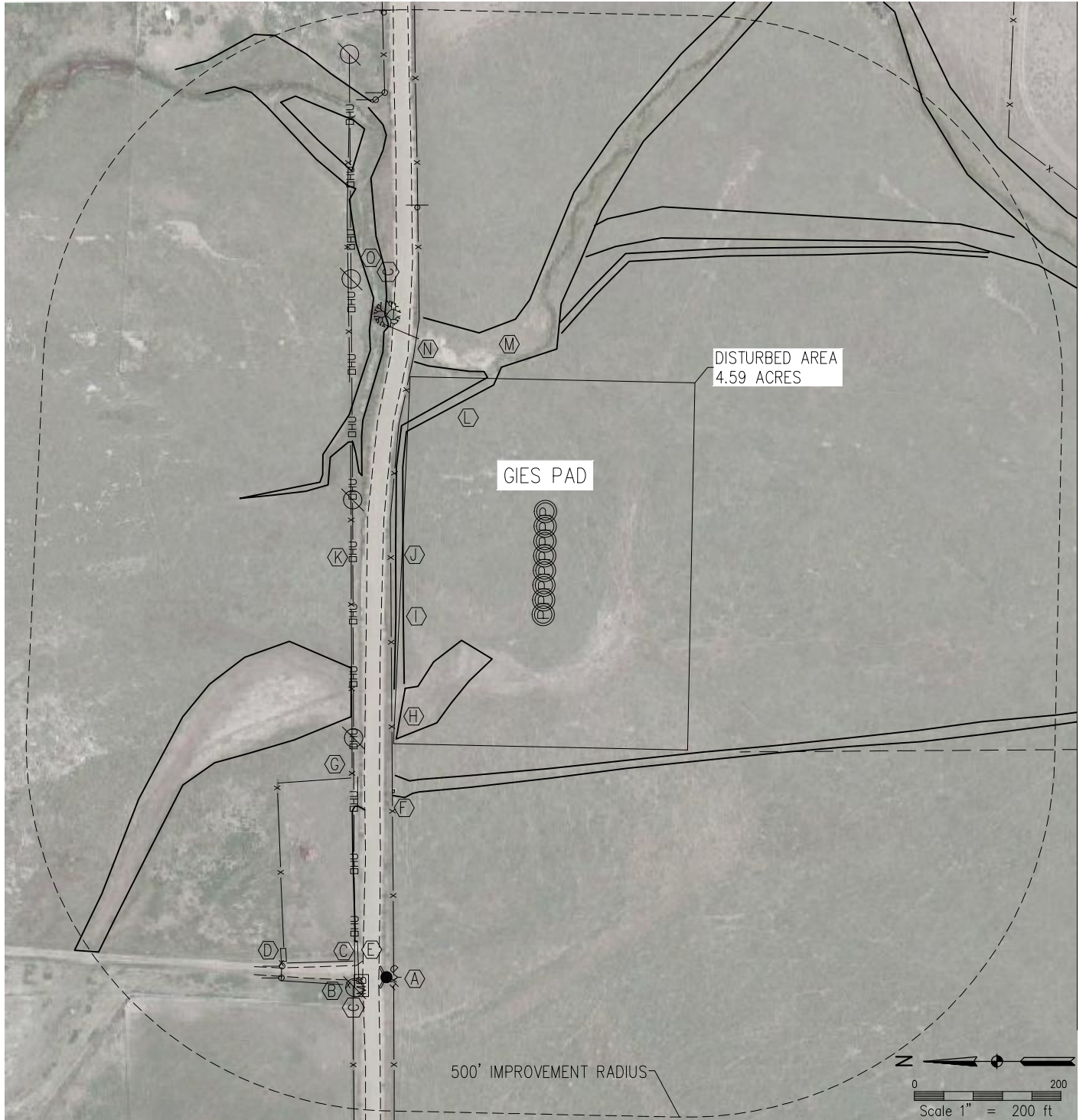


LOCATION DRAWING

SRC GIES PAD



NEAREST: BUILDING 875' NE, BUILDING UNIT 882' NE, HIGH OCCUPANCY BUILDING UNIT 5,280'+, DESIGNATED OUTSIDE ACTIVITY AREA 5,280'+
PUBLIC ROAD 220' N, ABOVE GROUND UTILITY 259' N, RAILROAD 5,280'+, PROPERTY LINE 221' N

IMPROVEMENTS:

- | | | |
|---|---|-------------------------------------|
| (A) FIRE HYDRANT: 538' NW | (E) 16" CMP: 511' NW | (J) WCR 80: 220' N |
| (B) MAIL BOX: 562' NW | (F) CONCRETE STRUCTURE: 313' NW | (K) OVER HEAD UTILITY: 259' N |
| (C) GRAVEL DRIVE: 532' NW | (G) 18" CMP: 336' NW | (L) DITCH: 185' NE, 244' SE, 209' W |
| (D) CATTLE GUARD: 574' NW | (H) DRY GULLY: 92' NW, 271' NW | (M) OWL CREEK: 206' E |
| (I) FENCE: 206' N, 261' N, 342' NW, 567' NW | (N) 60" CMP: 292' NE | |
| | (O) COMMUNICATIONS PEDESTAL: 390' NE, 594' NW | |

NOTE
The size, type and location of underground utilities shown hereon are approximate, and are based on markings made by utility locate companies. It is not guaranteed that all utilities have been located. It shall be the responsibility of the contractor to verify the existence of all underground utilities in the area of the work before commencing new construction.