

**ANADARKO PETROLEUM CORP - EBUS
DO NOT MAIL - PO BOX 4995
THE WOODLANDS, Texas**

Deepe 13N-27HZ

Majors 42

Post Job Summary **Cement Surface Casing**

Date Prepared: 6/30/2014
Version: 1

Service Supervisor: FANTASIA, JOSEPH

Submitted by: LANSDALE, JUSTIN

HALLIBURTON

HALLIBURTON

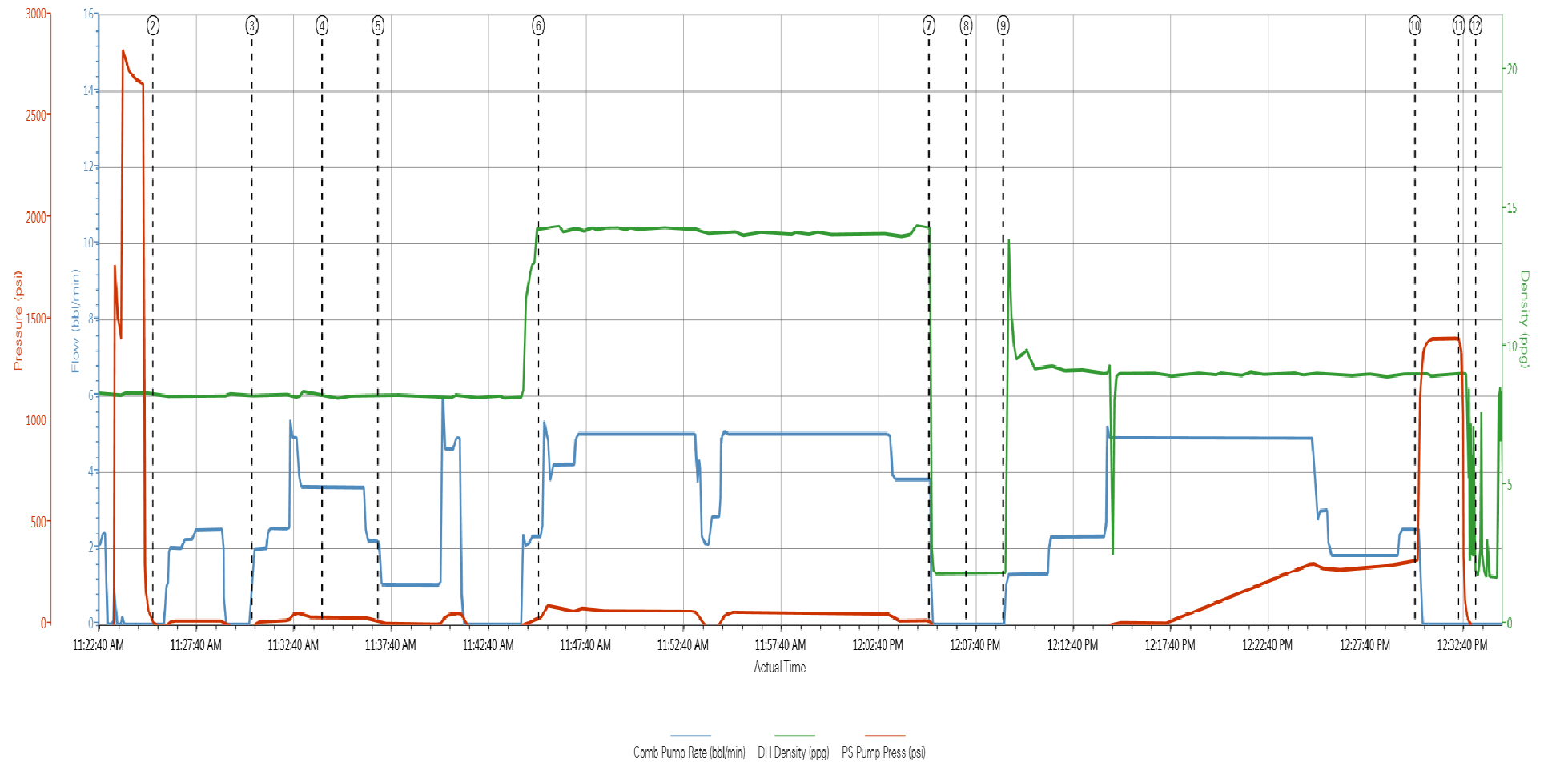
Pumping Schedule

Stage /Plug #	Fluid #	Fluid Type	Fluid Name	Surface Density lbm/gal	Avg Rate bbl/min	Surface Volume
1	1	Spacer	Water	8.33	5	10 bbl
1	2	Spacer	Mud Flush	8.50	5	12.0 bbl
1	3	Spacer	Water	8.33	5	10 bbl
1	4	Cement Slurry	SwiftCem B2	14.20	5	365.0 sacks
1	5	Diplaceme nt	Mud	9	6	75 bbl

HALLIBURTON

Data Acquisition

ANADARKO DEEPE 13-27HZ SURFACE



① Start Job 0:8:38;54 ④ Pump Spacer 2 3:6:27;32 ⑦ Shutdown 1:2:14:33;13 ⑩ Bump Plug 2:5:9:03;312
② Test Lines 0:8:32;0 ⑤ Pump Spacer 1 1:8:23;10 ⑧ Drop Top Plug 0:1:82;42 ⑪ Check Floats 0:9:08;1370
③ Pump Spacer 1 2:0:29;4 ⑥ Pump Cement 2:3:14:31;35 ⑨ Pump Displacement 0:4:1:06;-42 ⑫ End Job 0:1:78;30

Service Supervisor Reports

Job Log

Date/Time	Chart #	Activity Code	Pump Rate	Cum Vol	Pump		Pressure (psig)	Comments
03/01/2014 09:30		Arrive at Location from Service Center						ARRIVE AT LOCATION. RIG RUNNING CASING. ON BOTTOM AT 1000.
03/01/2014 09:45		Assessment Of Location Safety Meeting						PERFORM SITE ASSESSMENT AND HAZARD HUNT WITH CREW PRIOR TO SPOTTING EQUIPMENT AND RIGGING UP.
03/01/2014 11:00		Start Job						PERFORM PRE-JOB SAFETY MEETING WITH ALL PRESENT PERSONELL PRIOR TO JOB
03/01/2014 11:25		Test Lines					2550.0	PRESSURE TEST LINES TO 2550 PSI.
03/01/2014 11:30		Pump Spacer 1	5	10			85.0	PUMP 10 BBLS WATER
03/01/2014 11:34		Pump Spacer 2	5	12			45.0	PUMP 12 BBLS MUDFLUSH
03/01/2014 11:37		Pump Spacer 1	5	10			60.0	PUMP 10 BBLS WATER
03/01/2014 11:45		Pump Cement	5	100			45.0	365 SKS SWIFTCM MIXED AT 14.2 PPG USING RIG WATER
03/01/2014 12:05		Shutdown						
03/01/2014 12:07		Drop Top Plug						PLUG PRELOADED
03/01/2014 12:09		Pump Displacement	6	75			200.0	GOOD RETURNS THROUGHOUT. CEMENT TO SURFACE AT 65 BBLS OUT OF 75 BBLS TOTAL DISPLACEMENT. APPROX 10 BBLS CEMENT TO SURFACE.
03/01/2014 12:30		Bump Plug	2				312.0	PLUG LANDED AT 312 PSI. PRESSURE BROUGHT TO 1000 PSI AND HELD 3 MIN.
03/01/2014 12:33		Check Floats						FLOATS HELD. .5 BBLS BACK.
03/01/2014 13:00		End Job						PERFORM PRE RIG DOWN SAFETY MEETING

The Road to Excellence Starts with Safety

Sold To #: 300466	Ship To #: 3359589	Quote #:	Sales Order #: 901162002
Customer: ANADARKO PETROLEUM CORP - EBUS		Customer Rep: Porter, Bob	
Well Name: Deepe		Well #: 13N-27HZ	API/UWI #: 05-123-38561
Field:	City (SAP): FIRESTONE	County/Parish: Weld	State: Colorado
Contractor: Majors		Rig/Platform Name/Num: Majors 42	
Job Purpose: Cement Surface Casing			
Well Type: Development Well		Job Type: Cement Surface Casing	
Sales Person: FLING, MATTHEW		Srvc Supervisor: FANTASIA, JOSEPH	MBU ID Emp #: 485445

Job Personnel

HES Emp Name	Exp Hrs	Emp #	HES Emp Name	Exp Hrs	Emp #	HES Emp Name	Exp Hrs	Emp #
FANTASIA, JOSEPH Brandon	4.0	485445	MARKOVICH, STEVEN Michael	4.0	502964	ROBERTSON, TROY	4.0	1

Equipment

HES Unit #	Distance-1 way	HES Unit #	Distance-1 way	HES Unit #	Distance-1 way	HES Unit #	Distance-1 way
11410470C	11 mile						

Job Hours

Date	On Location Hours	Operating Hours	Date	On Location Hours	Operating Hours	Date	On Location Hours	Operating Hours
TOTAL	<i>Total is the sum of each column separately</i>							

Job

Formation Name					Job Times			
Formation Depth (MD)	Top	Bottom			Called Out	Date	Time	Time Zone
Form Type		BHST			On Location	01 - Mar - 2014	09:30	MST
Job depth MD	1011. ft	Job Depth TVD	1011. ft		Job Started	01 - Mar - 2014	11:00	MST
Water Depth		Wk Ht Above Floor			Job Completed	01 - Mar - 2014	12:45	MST
Perforation Depth (MD)	From	To			Departed Loc	01 - Mar - 2014	13:30	MST

Well Data

Description	New / Used	Max pressure psig	Size in	ID in	Weight lbm/ft	Thread	Grade	Top MD ft	Bottom MD ft	Top TVD ft	Bottom TVD ft

Fluid Data									
Stage/Plug #: 1									
Fluid #	Stage Type	Fluid Name	Qty	Qty uom	Mixing Density lbm/gal	Yield ft3/sk	Mix Fluid Gal/sk	Rate bbl/min	Total Mix Fluid Gal/sk
1	Mud Flush		12.00	bbl	8.5				
	42 gal/Mgal	FRESH WATER							
	0 gal/Mgal	MUD FLUSH III - SBM (528788)							
	3.33 lbm/bbl	MUD FLUSH III, 40 LB SACK (101633304)							
2	SwiftCem B2	SWIFTCEM (TM) SYSTEM (452990)	365.0	sacks	14.2	1.54	7.66		7.66
	7.66 Gal	FRESH WATER							
The Information Stated Herein Is Correct				Customer Representative Signature					

