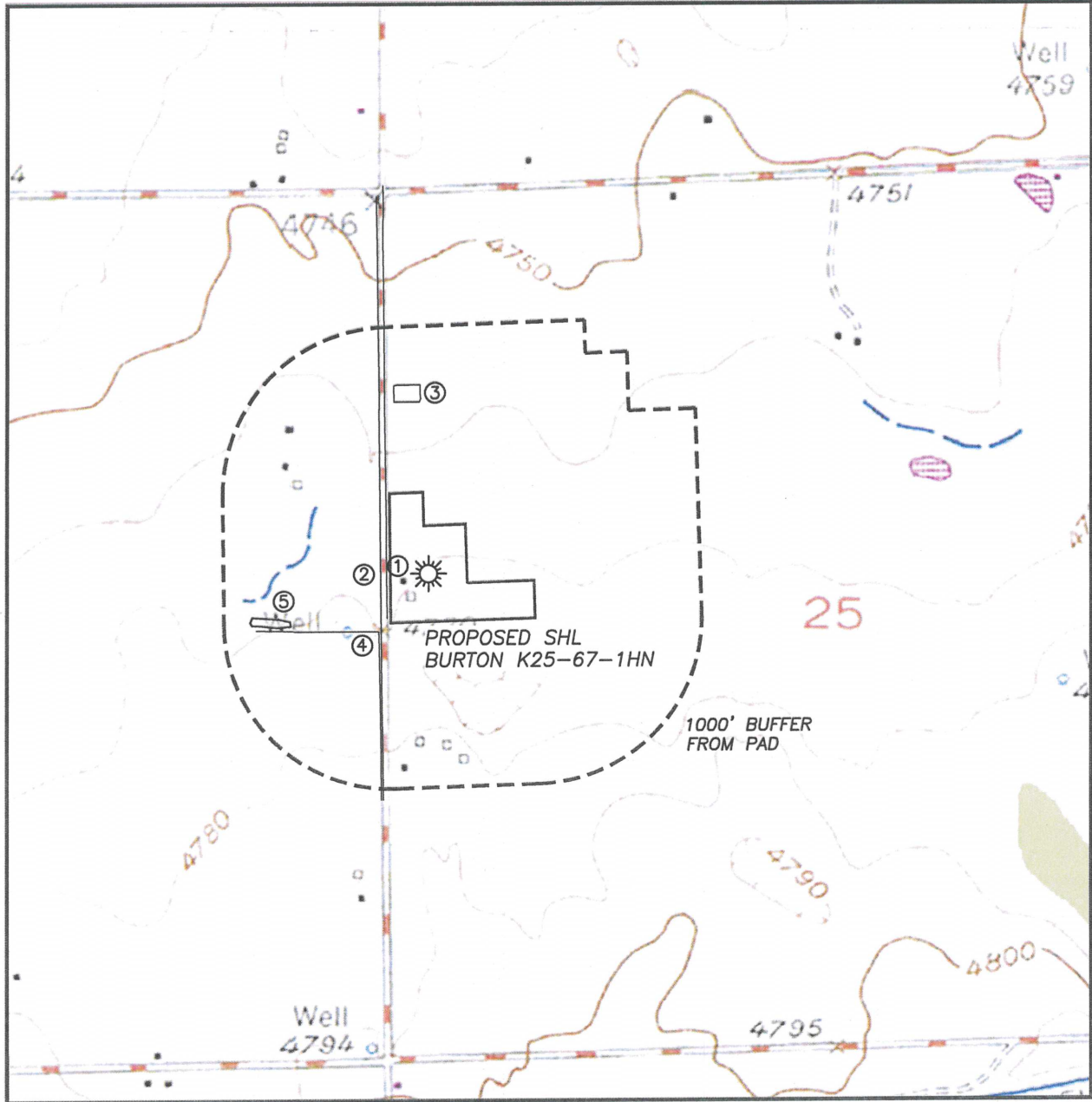


HYDROLOGY MAP BURTON K25-67-1HN

SECTION 25, TOWNSHIP 4 NORTH, RANGE 66 WEST OF THE 6TH PRINCIPAL MERIDIAN



SURFACE WATER

- 1. IRR. DITCH: 250'± W
- 2. IRR. DITCH: 286'± W
- 3. IRR. POND: 1034'± N
- 4. IRR. DITCH: 458'± SW
- 5. IRR. POND: 880'± W

