

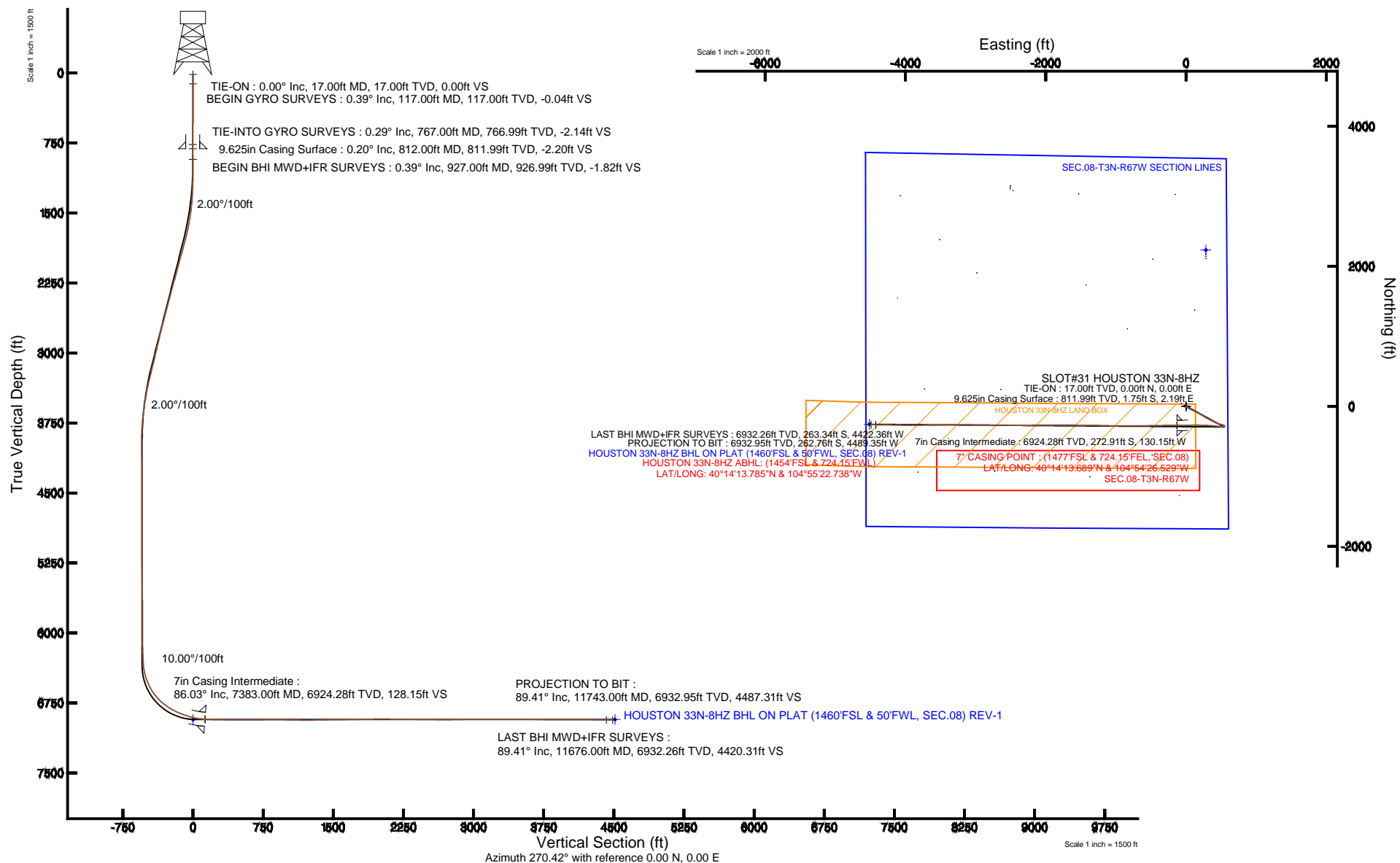
# KERR-MCGEE OIL & GAS ONSHORE LP

Location: COLORADO  
Field: WELD COUNTY (KERR MCGEE)  
Facility: SEC.08-T3N-R67W

Slot: SLOT#31 HOUSTON 33N-8HZ  
Well: HOUSTON 33N-8HZ  
Wellbore: HOUSTON 33N-8HZ PWB

Plot reference wellpath is HOUSTON 33N-8HZ (REV-A.0) PWP

True vertical depths are referenced to Rig on SLOT#11 HOUSTON 33N-8HZ (RKB)	Grid System: NAD83 / Lambert Colorado SP, Northern Zone (501), US feet
Measured depths are referenced to Rig on SLOT#11 HOUSTON 33N-8HZ (RKB)	North Reference: True north
Rig on SLOT#11 HOUSTON 33N-8HZ (RKB) to Mean Sea Level: 4824 feet	Scale: True distance
Mean Sea Level to Mud line (At Slot: SLOT#31 HOUSTON 33N-8HZ): 0 feet	Depths are in feet
Coordinates are in feet referenced to Slot	Created by: ingmjmr on 7/3/2014



# Actual Wellpath Report

HOUSTON 33N-8HZ AWP

Page 1 of 8

## REFERENCE WELLPATH IDENTIFICATION

Operator	KERR-MCGEE OIL & GAS ONSHORE LP	Slot	SLOT#31 HOUSTON 33N-8HZ
Area	COLORADO	Well	HOUSTON 33N-8HZ
Field	WELD COUNTY (KERR MCGEE)	Wellbore	HOUSTON 33N-8HZ AWB
Facility	SEC.08-T3N-R67W		

## REPORT SETUP INFORMATION

Projection System	NAD83 / Lambert Colorado SP, Northern Zone (501), US feet	Software System	WellArchitect® 4.0.0
North Reference	True	User	Ingmjmr
Scale	0.999957	Report Generated	7/3/2014 at 12:57:51 PM
Convergence at slot	n/a	Database/Source file	Anadarko Map Checks/HOUSTON_33N-8HZ_AWB.xml

## WELLPATH LOCATION

	Local coordinates		Grid coordinates		Geographic coordinates	
	North[ft]	East[ft]	Easting[US ft]	Northing[US ft]	Latitude	Longitude
Slot Location	-2234.28	-281.36	3165577.41	1330057.10	40°14'16.386"N	104°54'24.851"W
Facility Reference Pt			3165843.78	1332293.12	40°14'38.465"N	104°54'21.223"W
Field Reference Pt			3197771.84	1268891.29	40°04'09.600"N	104°47'36.000"W

## WELLPATH DATUM

Calculation method	Minimum curvature	Rig on SLOT#11 HOUSTON 33N-8HZ (RKB) to Facility Vertical Datum	4824.00ft
Horizontal Reference Pt	Slot	Rig on SLOT#11 HOUSTON 33N-8HZ (RKB) to Mean Sea Level	4824.00ft
Vertical Reference Pt	Rig on SLOT#11 HOUSTON 33N-8HZ (RKB)	Rig on SLOT#11 HOUSTON 33N-8HZ (RKB) to Mud Line at Slot (SLOT#31 HOUSTON 33N-8HZ)	4824.00ft
MD Reference Pt	Rig on SLOT#11 HOUSTON 33N-8HZ (RKB)	Section Origin	N 0.00, E 0.00 ft
Field Vertical Reference	Mean Sea Level	Section Azimuth	266.65°

### REFERENCE WELLPATH IDENTIFICATION

Operator	KERR-MCGEE OIL & GAS ONSHORE LP	Slot	SLOT#31 HOUSTON 33N-8HZ
Area	COLORADO	Well	HOUSTON 33N-8HZ
Field	WELD COUNTY (KERR MCGEE)	Wellbore	HOUSTON 33N-8HZ AWB
Facility	SEC.08-T3N-R67W		

### WELLPATH DATA (141 stations) † = interpolated/extrapolated station

MD [ft]	Inclination [°]	Azimuth [°]	TVD [ft]	Vert Sect [ft]	North [ft]	East [ft]	Latitude	Longitude	DLS [°/100ft]	Comments
0.00†	0.000	173.110	0.00	0.00	0.00	0.00	40°14'16.386"N	104°54'24.851"W	0.00	
17.00	0.000	173.110	17.00	0.00	0.00	0.00	40°14'16.386"N	104°54'24.851"W	0.00	TIE-ON
117.00	0.390	173.110	117.00	-0.02	-0.34	0.04	40°14'16.383"N	104°54'24.850"W	0.39	BEGIN GYRO SURVEYS
217.00	0.390	120.840	217.00	-0.32	-0.85	0.37	40°14'16.378"N	104°54'24.846"W	0.34	
317.00	0.320	44.960	317.00	-0.81	-0.83	0.86	40°14'16.378"N	104°54'24.840"W	0.44	
417.00	0.200	111.410	416.99	-1.18	-0.69	1.22	40°14'16.379"N	104°54'24.835"W	0.30	
517.00	0.450	91.300	516.99	-1.73	-0.77	1.78	40°14'16.378"N	104°54'24.828"W	0.27	
617.00	0.310	146.340	616.99	-2.26	-1.00	2.32	40°14'16.376"N	104°54'24.821"W	0.37	
717.00	0.690	206.750	716.99	-2.09	-1.76	2.20	40°14'16.369"N	104°54'24.823"W	0.60	
767.00	0.290	31.300	766.99	-2.01	-1.92	2.13	40°14'16.367"N	104°54'24.824"W	1.96	TIE-INTO GYRO SURVEYS
927.00	0.390	282.920	926.99	-1.72	-1.46	1.81	40°14'16.372"N	104°54'24.828"W	0.35	BEGIN BHI MWD+IFR SURVEYS
1019.00	0.180	317.330	1018.98	-1.33	-1.28	1.41	40°14'16.373"N	104°54'24.833"W	0.28	
1110.00	0.570	161.960	1109.98	-1.35	-1.60	1.45	40°14'16.370"N	104°54'24.832"W	0.81	
1201.00	2.180	141.610	1200.95	-2.46	-3.39	2.66	40°14'16.352"N	104°54'24.817"W	1.82	
1293.00	3.970	131.970	1292.82	-5.71	-6.89	6.12	40°14'16.318"N	104°54'24.772"W	2.02	
1384.00	5.840	125.520	1383.48	-11.53	-11.69	12.23	40°14'16.270"N	104°54'24.693"W	2.14	
1476.00	8.400	120.590	1474.77	-20.75	-17.83	21.83	40°14'16.210"N	104°54'24.570"W	2.86	
1568.00	10.830	117.770	1565.47	-33.72	-25.28	35.26	40°14'16.136"N	104°54'24.396"W	2.69	
1691.00	13.410	118.870	1685.72	-55.69	-37.55	57.98	40°14'16.015"N	104°54'24.103"W	2.11	
1782.00	15.900	117.430	1773.75	-75.33	-48.39	78.29	40°14'15.908"N	104°54'23.842"W	2.77	
1874.00	17.310	116.900	1861.91	-97.98	-60.39	101.68	40°14'15.789"N	104°54'23.540"W	1.54	
1966.00	17.200	116.720	1949.77	-121.57	-72.70	126.04	40°14'15.668"N	104°54'23.226"W	0.13	
2057.00	16.620	116.380	2036.83	-144.52	-84.53	149.71	40°14'15.551"N	104°54'22.921"W	0.65	
2148.00	16.680	118.260	2124.02	-166.94	-96.49	172.87	40°14'15.432"N	104°54'22.622"W	0.60	
2240.00	17.630	120.100	2211.93	-189.81	-109.73	196.56	40°14'15.302"N	104°54'22.316"W	1.19	
2331.00	16.960	119.760	2298.81	-212.43	-123.23	220.00	40°14'15.168"N	104°54'22.014"W	0.74	
2423.00	16.960	121.140	2386.81	-234.73	-136.83	243.14	40°14'15.034"N	104°54'21.716"W	0.44	
2515.00	16.940	122.290	2474.81	-256.68	-150.93	265.95	40°14'14.894"N	104°54'21.422"W	0.37	
2607.00	17.310	118.380	2562.74	-279.21	-164.60	289.33	40°14'14.759"N	104°54'21.120"W	1.31	
2698.00	16.420	118.560	2649.82	-301.65	-177.18	312.53	40°14'14.635"N	104°54'20.821"W	0.98	

### REFERENCE WELLPATH IDENTIFICATION

Operator	KERR-MCGEE OIL & GAS ONSHORE LP	Slot	SLOT#31 HOUSTON 33N-8HZ
Area	COLORADO	Well	HOUSTON 33N-8HZ
Field	WELD COUNTY (KERR MCGEE)	Wellbore	HOUSTON 33N-8HZ AWB
Facility	SEC.08-T3N-R67W		

### WELLPATH DATA (141 stations)

MD [ft]	Inclination [°]	Azimuth [°]	TVD [ft]	Vert Sect [ft]	North [ft]	East [ft]	Latitude	Longitude	DLS [°/100ft]	Comments
2790.00	15.500	118.890	2738.28	-323.08	-189.34	334.72	40°14'14.515"N	104°54'20.535"W	1.00	
2882.00	14.970	115.320	2827.04	-343.91	-200.36	356.22	40°14'14.406"N	104°54'20.258"W	1.17	
2972.00	14.580	116.010	2914.07	-363.98	-210.30	376.91	40°14'14.308"N	104°54'19.991"W	0.48	
3064.00	14.600	118.720	3003.10	-383.90	-220.95	397.49	40°14'14.203"N	104°54'19.726"W	0.74	
3155.00	14.850	114.830	3091.12	-403.90	-231.36	418.13	40°14'14.100"N	104°54'19.459"W	1.12	
3247.00	15.000	111.960	3180.01	-425.05	-240.76	439.87	40°14'14.007"N	104°54'19.179"W	0.82	
3339.00	14.480	110.040	3268.99	-446.37	-249.15	461.72	40°14'13.924"N	104°54'18.897"W	0.78	
3424.00	12.330	105.640	3351.67	-464.71	-255.24	480.44	40°14'13.864"N	104°54'18.656"W	2.80	
3509.00	10.540	102.840	3434.98	-480.76	-259.42	496.76	40°14'13.822"N	104°54'18.446"W	2.20	
3595.00	9.230	102.840	3519.70	-494.94	-262.70	511.16	40°14'13.790"N	104°54'18.260"W	1.52	
3680.00	8.050	108.870	3603.73	-506.99	-266.14	523.44	40°14'13.756"N	104°54'18.102"W	1.75	
3765.00	6.980	117.740	3688.01	-516.93	-270.47	533.64	40°14'13.713"N	104°54'17.970"W	1.85	
3850.00	5.150	126.310	3772.53	-524.29	-275.13	541.29	40°14'13.667"N	104°54'17.871"W	2.40	
3935.00	3.000	121.990	3857.31	-529.04	-278.57	546.25	40°14'13.633"N	104°54'17.807"W	2.55	
4020.00	0.270	159.930	3942.27	-530.91	-279.93	548.20	40°14'13.620"N	104°54'17.782"W	3.28	
4106.00	0.540	263.100	4028.27	-530.56	-280.17	547.87	40°14'13.617"N	104°54'17.787"W	0.76	
4191.00	1.030	298.790	4113.26	-529.52	-279.85	546.80	40°14'13.620"N	104°54'17.800"W	0.79	
4276.00	0.560	252.030	4198.25	-528.47	-279.61	545.74	40°14'13.623"N	104°54'17.814"W	0.90	
4361.00	1.220	172.080	4283.24	-528.14	-280.64	545.47	40°14'13.613"N	104°54'17.818"W	1.47	
4446.00	1.130	171.790	4368.22	-528.28	-282.36	545.71	40°14'13.596"N	104°54'17.814"W	0.11	
4532.00	1.270	174.840	4454.21	-528.38	-284.15	545.92	40°14'13.578"N	104°54'17.812"W	0.18	
4617.00	1.100	189.210	4539.19	-528.24	-285.90	545.87	40°14'13.561"N	104°54'17.812"W	0.40	
4702.00	1.050	169.360	4624.17	-528.16	-287.47	545.89	40°14'13.545"N	104°54'17.812"W	0.44	
4787.00	1.000	170.850	4709.16	-528.33	-288.97	546.15	40°14'13.530"N	104°54'17.809"W	0.07	
4872.00	0.790	173.710	4794.15	-528.44	-290.28	546.33	40°14'13.517"N	104°54'17.806"W	0.25	
5043.00	0.530	196.290	4965.14	-528.23	-292.21	546.24	40°14'13.498"N	104°54'17.808"W	0.21	
5217.00	0.590	222.580	5139.13	-527.32	-293.64	545.41	40°14'13.484"N	104°54'17.818"W	0.15	
5394.00	0.620	246.670	5316.12	-525.76	-294.69	543.91	40°14'13.474"N	104°54'17.838"W	0.14	
5567.00	1.120	267.690	5489.10	-523.19	-295.13	541.36	40°14'13.469"N	104°54'17.871"W	0.34	
5738.00	0.450	281.610	5660.08	-520.87	-295.06	539.03	40°14'13.470"N	104°54'17.901"W	0.40	

### REFERENCE WELLPATH IDENTIFICATION

Operator	KERR-MCGEE OIL & GAS ONSHORE LP	Slot	SLOT#31 HOUSTON 33N-8HZ
Area	COLORADO	Well	HOUSTON 33N-8HZ
Field	WELD COUNTY (KERR MCGEE)	Wellbore	HOUSTON 33N-8HZ AWB
Facility	SEC.08-T3N-R67W		

### WELLPATH DATA (141 stations) † = interpolated/extrapolated station

MD [ft]	Inclination [°]	Azimuth [°]	TVD [ft]	Vert Sect [ft]	North [ft]	East [ft]	Latitude	Longitude	DLS [°/100ft]	Comments
5914.00	0.410	342.750	5836.08	-520.05	-294.32	538.17	40°14'13.477"N	104°54'17.912"W	0.25	
6000.00	0.230	258.480	5922.08	-519.81	-294.06	537.91	40°14'13.480"N	104°54'17.915"W	0.52	
6170.00	0.290	229.740	6092.08	-519.13	-294.41	537.25	40°14'13.477"N	104°54'17.924"W	0.08	
6256.00	1.930	277.570	6178.06	-517.53	-294.36	535.65	40°14'13.477"N	104°54'17.944"W	2.03	
6341.00	2.070	276.470	6263.01	-514.61	-294.00	532.70	40°14'13.481"N	104°54'17.982"W	0.17	
6383.00	2.750	275.140	6304.97	-512.87	-293.82	530.94	40°14'13.482"N	104°54'18.005"W	1.62	
6426.00	5.430	274.060	6347.85	-509.83	-293.59	527.89	40°14'13.485"N	104°54'18.044"W	6.23	
6469.00	9.230	275.370	6390.50	-504.40	-293.12	522.42	40°14'13.489"N	104°54'18.115"W	8.85	
6511.00	13.000	274.710	6431.70	-496.39	-292.42	514.36	40°14'13.496"N	104°54'18.219"W	8.98	
6554.00	17.370	275.610	6473.19	-485.26	-291.39	503.14	40°14'13.506"N	104°54'18.363"W	10.18	
6596.00	20.810	276.320	6512.87	-471.71	-289.96	489.48	40°14'13.521"N	104°54'18.539"W	8.21	
6639.00	25.350	276.090	6552.42	-455.09	-288.14	472.73	40°14'13.539"N	104°54'18.755"W	10.56	
6682.00	28.890	276.150	6590.69	-435.76	-286.05	453.24	40°14'13.559"N	104°54'19.007"W	8.23	
6724.00	32.890	276.330	6626.72	-414.50	-283.70	431.81	40°14'13.582"N	104°54'19.283"W	9.53	
6767.00	36.670	276.020	6662.03	-390.31	-281.07	407.43	40°14'13.608"N	104°54'19.597"W	8.80	
6809.00	42.270	276.520	6694.44	-364.00	-278.15	380.90	40°14'13.637"N	104°54'19.939"W	13.35	
6852.00	45.790	274.290	6725.36	-334.47	-275.35	351.16	40°14'13.665"N	104°54'20.323"W	8.94	
6895.00	50.800	271.950	6753.96	-302.58	-273.63	319.12	40°14'13.682"N	104°54'20.736"W	12.34	
6937.00	53.870	271.890	6779.62	-269.48	-272.52	285.89	40°14'13.693"N	104°54'21.165"W	7.31	
6980.00	58.290	271.930	6803.61	-233.96	-271.33	250.24	40°14'13.705"N	104°54'21.624"W	10.28	
7022.00	62.530	271.150	6824.34	-197.58	-270.35	213.74	40°14'13.714"N	104°54'22.095"W	10.22	
7065.00	64.850	270.800	6843.40	-159.14	-269.70	175.20	40°14'13.721"N	104°54'22.592"W	5.44	
7108.00	66.750	269.660	6861.03	-120.00	-269.54	135.98	40°14'13.722"N	104°54'23.098"W	5.04	
7150.00	70.250	269.590	6876.42	-80.98	-269.80	96.91	40°14'13.720"N	104°54'23.601"W	8.33	
7193.00	73.090	268.820	6889.94	-40.21	-270.37	56.10	40°14'13.714"N	104°54'24.128"W	6.82	
7235.00	74.590	269.380	6901.63	0.09	-271.00	15.77	40°14'13.708"N	104°54'24.648"W	3.79	
7276.00	77.830	269.090	6911.40	39.87	-271.53	-24.04	40°14'13.703"N	104°54'25.161"W	7.93	
7331.00	84.350	269.160	6919.91	94.12	-272.36	-78.34	40°14'13.695"N	104°54'25.861"W	11.86	
7383.00†	86.026	269.631	6924.28	145.88	-272.91	-130.15	40°14'13.689"N	104°54'26.529"W	3.35	7" CASING POINT
7465.00	88.670	270.370	6928.07	227.64	-272.91	-212.06	40°14'13.689"N	104°54'27.585"W	3.35	

### REFERENCE WELLPATH IDENTIFICATION

Operator	KERR-MCGEE OIL & GAS ONSHORE LP	Slot	SLOT#31 HOUSTON 33N-8HZ
Area	COLORADO	Well	HOUSTON 33N-8HZ
Field	WELD COUNTY (KERR MCGEE)	Wellbore	HOUSTON 33N-8HZ AWB
Facility	SEC.08-T3N-R67W		

### WELLPATH DATA (141 stations)

MD [ft]	Inclination [°]	Azimuth [°]	TVD [ft]	Vert Sect [ft]	North [ft]	East [ft]	Latitude	Longitude	DLS [°/100ft]	Comments
7550.00	88.640	269.670	6930.06	312.47	-272.88	-297.04	40°14'13.689"N	104°54'28.681"W	0.82	
7635.00	89.320	269.390	6931.58	397.35	-273.57	-382.02	40°14'13.683"N	104°54'29.777"W	0.87	
7720.00	90.030	268.820	6932.06	482.27	-274.90	-467.01	40°14'13.669"N	104°54'30.873"W	1.07	
7805.00	90.150	268.720	6931.93	567.21	-276.73	-551.99	40°14'13.651"N	104°54'31.968"W	0.18	
7890.00	90.430	269.620	6931.50	652.13	-277.96	-636.97	40°14'13.639"N	104°54'33.064"W	1.11	
7975.00	90.330	269.420	6930.93	737.02	-278.67	-721.97	40°14'13.632"N	104°54'34.160"W	0.26	
8060.00	90.520	269.790	6930.30	821.90	-279.25	-806.97	40°14'13.626"N	104°54'35.256"W	0.49	
8145.00	89.810	270.440	6930.06	906.75	-279.08	-891.96	40°14'13.628"N	104°54'36.352"W	1.13	
8230.00	89.410	270.180	6930.64	991.57	-278.62	-976.96	40°14'13.632"N	104°54'37.448"W	0.56	
8312.00	88.790	271.710	6931.92	1073.33	-277.27	-1058.94	40°14'13.646"N	104°54'38.505"W	2.01	
8397.00	89.320	271.390	6933.33	1158.01	-274.97	-1143.89	40°14'13.668"N	104°54'39.601"W	0.73	
8482.00	90.210	270.910	6933.67	1242.74	-273.27	-1228.87	40°14'13.685"N	104°54'40.697"W	1.19	
8568.00	90.710	270.790	6932.98	1328.51	-271.99	-1314.86	40°14'13.698"N	104°54'41.805"W	0.60	
8653.00	91.100	270.590	6931.64	1413.29	-270.97	-1399.84	40°14'13.708"N	104°54'42.901"W	0.52	
8738.00	90.920	270.330	6930.14	1498.08	-270.29	-1484.83	40°14'13.715"N	104°54'43.997"W	0.37	
8823.00	90.610	270.580	6929.01	1582.89	-269.61	-1569.82	40°14'13.721"N	104°54'45.093"W	0.47	
8908.00	91.010	270.000	6927.81	1667.71	-269.18	-1654.81	40°14'13.725"N	104°54'46.189"W	0.83	
8993.00	90.990	270.670	6926.32	1752.52	-268.68	-1739.79	40°14'13.730"N	104°54'47.285"W	0.79	
9078.00	90.890	270.380	6924.93	1837.31	-267.90	-1824.78	40°14'13.738"N	104°54'48.380"W	0.36	
9164.00	90.980	269.680	6923.53	1923.15	-267.86	-1910.77	40°14'13.738"N	104°54'49.489"W	0.82	
9249.00	90.030	269.570	6922.78	2008.03	-268.42	-1995.76	40°14'13.733"N	104°54'50.585"W	1.13	
9334.00	89.630	269.560	6923.03	2092.92	-269.06	-2080.76	40°14'13.726"N	104°54'51.681"W	0.47	
9419.00	89.630	269.580	6923.58	2177.81	-269.70	-2165.75	40°14'13.720"N	104°54'52.777"W	0.02	
9504.00	89.690	269.830	6924.08	2262.69	-270.14	-2250.75	40°14'13.716"N	104°54'53.873"W	0.30	
9589.00	88.920	269.890	6925.11	2347.55	-270.34	-2335.74	40°14'13.713"N	104°54'54.969"W	0.91	
9675.00	89.780	270.050	6926.09	2433.40	-270.39	-2421.74	40°14'13.713"N	104°54'56.078"W	1.02	
9760.00	89.010	270.320	6926.99	2518.23	-270.12	-2506.73	40°14'13.715"N	104°54'57.174"W	0.96	
9845.00	89.220	270.850	6928.30	2603.02	-269.25	-2591.72	40°14'13.724"N	104°54'58.269"W	0.67	
9930.00	89.900	270.420	6928.95	2687.81	-268.31	-2676.71	40°14'13.733"N	104°54'59.365"W	0.95	
10015.00	90.860	270.780	6928.39	2772.61	-267.42	-2761.70	40°14'13.742"N	104°55'00.461"W	1.21	

### REFERENCE WELLPATH IDENTIFICATION

Operator	KERR-MCGEE OIL & GAS ONSHORE LP	Slot	SLOT#31 HOUSTON 33N-8HZ
Area	COLORADO	Well	HOUSTON 33N-8HZ
Field	WELD COUNTY (KERR MCGEE)	Wellbore	HOUSTON 33N-8HZ AWP
Facility	SEC.08-T3N-R67W		

### WELLPATH DATA (141 stations)

MD [ft]	Inclination [°]	Azimuth [°]	TVD [ft]	Vert Sect [ft]	North [ft]	East [ft]	Latitude	Longitude	DLS [°/100ft]	Comments
10101.00	91.350	271.040	6926.73	2858.35	-266.05	-2847.67	40°14'13.755"N	104°55'01.570"W	0.64	
10186.00	90.980	270.440	6925.00	2943.12	-264.95	-2932.65	40°14'13.766"N	104°55'02.666"W	0.83	
10271.00	90.180	271.150	6924.14	3027.89	-263.77	-3017.63	40°14'13.778"N	104°55'03.761"W	1.26	
10356.00	90.520	271.390	6923.62	3112.61	-261.89	-3102.61	40°14'13.796"N	104°55'04.857"W	0.49	
10442.00	89.660	270.470	6923.49	3198.37	-260.49	-3188.60	40°14'13.810"N	104°55'05.966"W	1.46	
10537.00	90.090	268.810	6923.69	3293.24	-261.09	-3283.59	40°14'13.804"N	104°55'07.191"W	1.81	
10622.00	90.270	269.270	6923.43	3378.16	-262.51	-3368.58	40°14'13.790"N	104°55'08.287"W	0.58	
10707.00	89.290	268.720	6923.75	3463.09	-264.01	-3453.56	40°14'13.775"N	104°55'09.382"W	1.32	
10792.00	89.930	268.860	6924.33	3548.03	-265.80	-3538.54	40°14'13.757"N	104°55'10.478"W	0.77	
10878.00	88.850	268.770	6925.25	3633.96	-267.58	-3624.52	40°14'13.739"N	104°55'11.587"W	1.26	
10963.00	88.550	269.040	6927.18	3718.87	-269.20	-3709.48	40°14'13.723"N	104°55'12.682"W	0.47	
11048.00	89.080	269.350	6928.93	3803.77	-270.40	-3794.45	40°14'13.711"N	104°55'13.778"W	0.72	
11133.00	89.870	269.590	6929.71	3888.66	-271.18	-3879.45	40°14'13.703"N	104°55'14.874"W	0.97	
11218.00	89.320	270.550	6930.31	3973.51	-271.08	-3964.44	40°14'13.704"N	104°55'15.970"W	1.30	
11304.00	90.150	270.970	6930.71	4059.29	-269.94	-4050.43	40°14'13.715"N	104°55'17.079"W	1.08	
11389.00	90.210	271.510	6930.44	4144.01	-268.10	-4135.41	40°14'13.733"N	104°55'18.174"W	0.64	
11474.00	89.780	271.200	6930.45	4228.73	-266.09	-4220.39	40°14'13.753"N	104°55'19.270"W	0.62	
11559.00	89.410	270.770	6931.05	4313.48	-264.63	-4305.37	40°14'13.767"N	104°55'20.366"W	0.67	
11645.00	89.410	270.560	6931.94	4399.26	-263.63	-4391.36	40°14'13.777"N	104°55'21.475"W	0.24	
11676.00	89.410	270.500	6932.26	4430.19	-263.34	-4422.36	40°14'13.780"N	104°55'21.874"W	0.19	LAST BHI MWD+IFR SURVEYS
11743.00	89.410	270.500	6932.95	4497.04	-262.76	-4489.35	40°14'13.785"N	104°55'22.738"W	0.00	PROJECTION TO BIT



# Actual Wellpath Report

HOUSTON 33N-8HZ AWP

Page 7 of 8

## REFERENCE WELLPATH IDENTIFICATION

Operator	KERR-MCGEE OIL & GAS ONSHORE LP	Slot	SLOT#31 HOUSTON 33N-8HZ
Area	COLORADO	Well	HOUSTON 33N-8HZ
Field	WELD COUNTY (KERR MCGEE)	Wellbore	HOUSTON 33N-8HZ AWB
Facility	SEC.08-T3N-R67W		

## HOLE & CASING SECTIONS - Ref Wellbore: HOUSTON 33N-8HZ AWB Ref Wellpath: HOUSTON 33N-8HZ AWP

String/Diameter	Start MD [ft]	End MD [ft]	Interval [ft]	Start TVD [ft]	End TVD [ft]	Start N/S [ft]	Start E/W [ft]	End N/S [ft]	End E/W [ft]
13.5in Open Hole	17.00	812.00	795.00	17.00	811.99	0.00	0.00	-1.75	2.19
9.625in Casing Surface	17.00	812.00	795.00	17.00	811.99	0.00	0.00	-1.75	2.19
8.75in Open Hole	812.00	7395.00	6583.00	811.99	6925.07	-1.75	2.19	-272.97	-142.13
7in Casing Intermediate	17.00	7383.00	7366.00	17.00	6924.28	0.00	0.00	-272.91	-130.15
6.125in Open Hole	7395.00	11743.00	4348.00	6925.07	6932.95	-272.97	-142.13	-262.76	-4489.35

## WELLPATH COMPOSITION - Ref Wellbore: HOUSTON 33N-8HZ AWB Ref Wellpath: HOUSTON 33N-8HZ AWP

Start MD [ft]	End MD [ft]	Positional Uncertainty Model	Log Name/Comment	Wellbore
17.00	767.00	Generic gyro - continuous (Standard)	MS ENERGY GYRO SURVEYS <117-767>	HOUSTON 33N-8HZ AWB
767.00	7331.00	NaviTrak (IFR)	BHI MWD/NAVITRAK (IFR) 8.75" HOLE <927-7331>	HOUSTON 33N-8HZ AWB
7331.00	11676.00	NaviTrak (IFR)	BHI MWD/NAVITRAK (IFR) 6.125" HOLE <7465-11676>	HOUSTON 33N-8HZ AWB
11676.00	11743.00	Blind Drilling (std)	Projection to bit	HOUSTON 33N-8HZ AWB



# Actual Wellpath Report

HOUSTON 33N-8HZ AWP

Page 8 of 8

## REFERENCE WELLPATH IDENTIFICATION

Operator	KERR-MCGEE OIL & GAS ONSHORE LP	Slot	SLOT#31 HOUSTON 33N-8HZ
Area	COLORADO	Well	HOUSTON 33N-8HZ
Field	WELD COUNTY (KERR MCGEE)	Wellbore	HOUSTON 33N-8HZ AWB
Facility	SEC.08-T3N-R67W		

## WELLPATH COMMENTS

MD [ft]	Inclination [°]	Azimuth [°]	TVD [ft]	Comment
17.00	0.000	173.110	17.00	TIE-ON
117.00	0.390	173.110	117.00	BEGIN GYRO SURVEYS
767.00	0.290	31.300	766.99	TIE-INTO GYRO SURVEYS
927.00	0.390	282.920	926.99	BEGIN BHI MWD+IFR SURVEYS
7383.00	86.026	269.631	6924.28	7" CASING POINT
11676.00	89.410	270.500	6932.26	LAST BHI MWD+IFR SURVEYS
11743.00	89.410	270.500	6932.95	PROJECTION TO BIT