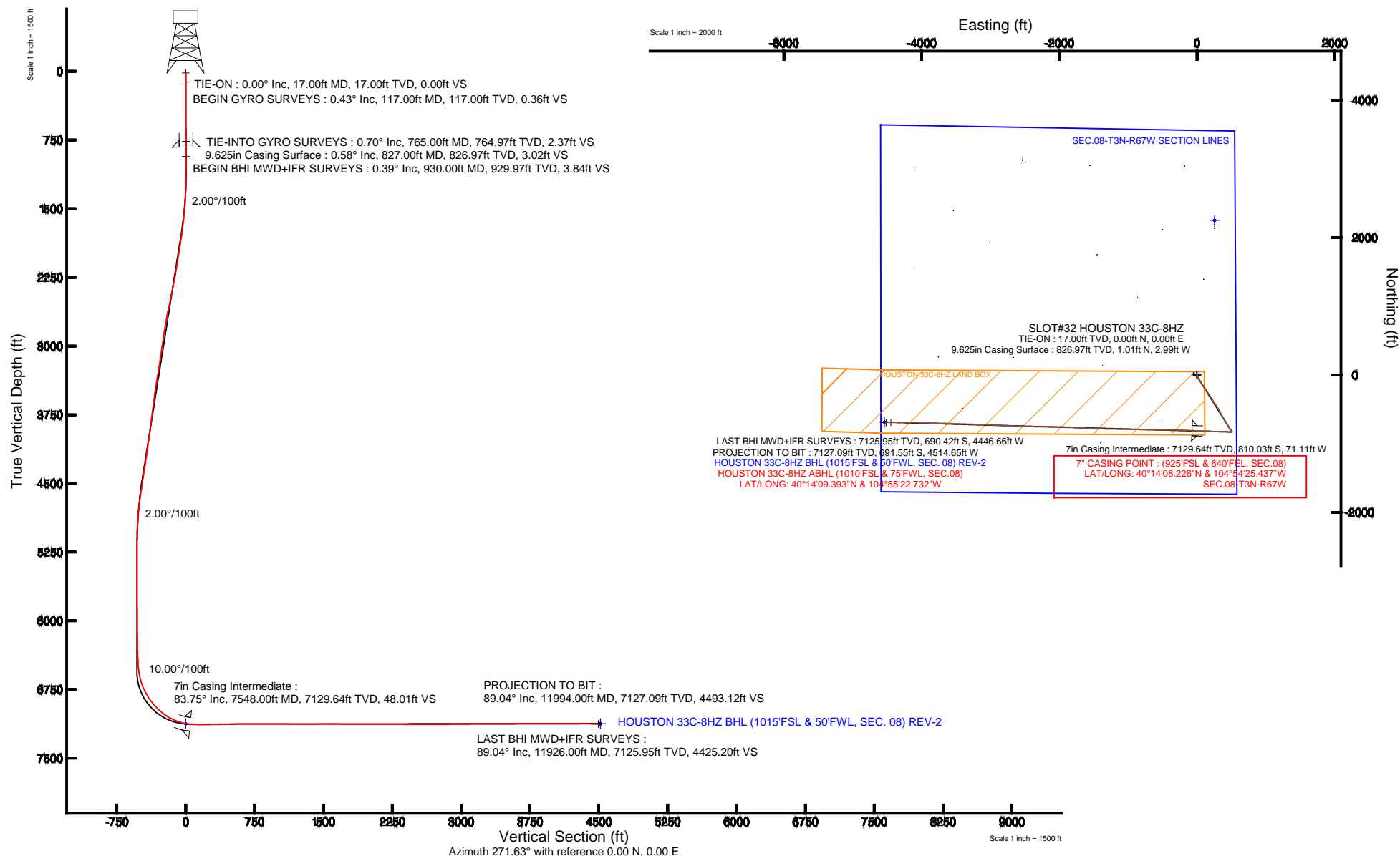


Slot: SLOT#32 HOUSTON 33C-8HZ
Well: HOUSTON 33C-8HZ
Wellbore: HOUSTON 33C-8HZ PWB

True vertical depths are referenced to Rig on SLOT#12 HOUSTON 33C-8HZ (RKB)	Grid System: NAD83 / Lambert Colorado SP, Northern Zone (501), US feet
Measured depths are referenced to Rig on SLOT#12 HOUSTON 33C-8HZ (RKB)	North Reference: True north
Rig on SLOT#12 HOUSTON 33C-8HZ (RKB) to Mean Sea Level: 4824 feet	Scale: True distance
Mean Sea Level to Mud line (At Slot: SLOT#32 HOUSTON 33C-8HZ): 0 feet	Depths are in feet
Coordinates are in feet referenced to Slot	Created by: inqimamr on 7/3/2014



Actual Wellpath Report

HOUSTON 33C-8HZ AWP

Page 1 of 8

REFERENCE WELLPATH IDENTIFICATION

Operator	KERR-MCGEE OIL & GAS ONSHORE LP	Slot	SLOT#32 HOUSTON 33C-8HZ
Area	COLORADO	Well	HOUSTON 33C-8HZ
Field	WELD COUNTY (KERR MCGEE)	Wellbore	HOUSTON 33C-8HZ AWB
Facility	SEC.08-T3N-R67W		

REPORT SETUP INFORMATION

Projection System	NAD83 / Lambert Colorado SP, Northern Zone (501), US feet	Software System	WellArchitect® 4.0.0
North Reference	True	User	Ingmjmr
Scale	0.999957	Report Generated	7/3/2014 at 2:25:11 PM
Convergence at slot	n/a	Database/Source file	Anadarko Map Checks/HOUSTON_33C-8HZ_AWB.xml

WELLPATH LOCATION

	Local coordinates		Grid coordinates		Geographic coordinates	
	North[ft]	East[ft]	Easting[US ft]	Northing[US ft]	Latitude	Longitude
Slot Location	-2249.97	-255.69	3165603.18	1330041.59	40°14'16.231"N	104°54'24.520"W
Facility Reference Pt			3165843.78	1332293.12	40°14'38.465"N	104°54'21.223"W
Field Reference Pt			3197771.84	1268891.29	40°04'09.600"N	104°47'36.000"W

WELLPATH DATUM

Calculation method	Minimum curvature	Rig on SLOT#12 HOUSTON 33C-8HZ (RKB) to Facility Vertical Datum	4824.00ft
Horizontal Reference Pt	Slot	Rig on SLOT#12 HOUSTON 33C-8HZ (RKB) to Mean Sea Level	4824.00ft
Vertical Reference Pt	Rig on SLOT#12 HOUSTON 33C-8HZ (RKB)	Rig on SLOT#12 HOUSTON 33C-8HZ (RKB) to Mud Line at Slot (SLOT#32 HOUSTON 33C-8HZ)	4824.00ft
MD Reference Pt	Rig on SLOT#12 HOUSTON 33C-8HZ (RKB)	Section Origin	N 0.00, E 0.00 ft
Field Vertical Reference	Mean Sea Level	Section Azimuth	261.29°

REFERENCE WELLPATH IDENTIFICATION

Operator	KERR-MCGEE OIL & GAS ONSHORE LP	Slot	SLOT#32 HOUSTON 33C-8HZ
Area	COLORADO	Well	HOUSTON 33C-8HZ
Field	WELD COUNTY (KERR MCGEE)	Wellbore	HOUSTON 33C-8HZ AWP
Facility	SEC.08-T3N-R67W		

WELLPATH DATA (144 stations) † = interpolated/extrapolated station

MD [ft]	Inclination [°]	Azimuth [°]	TVD [ft]	Vert Sect [ft]	North [ft]	East [ft]	Latitude	Longitude	DLS [°/100ft]	Comments
0.00†	0.000	252.790	0.00	0.00	0.00	0.00	40°14'16.231"N	104°54'24.520"W	0.00	
17.00	0.000	252.790	17.00	0.00	0.00	0.00	40°14'16.231"N	104°54'24.520"W	0.00	TIE-ON
117.00	0.430	252.790	117.00	0.37	-0.11	-0.36	40°14'16.230"N	104°54'24.525"W	0.43	BEGIN GYRO SURVEYS
217.00	0.540	350.830	217.00	0.75	0.24	-0.79	40°14'16.233"N	104°54'24.530"W	0.74	
317.00	0.550	59.290	316.99	0.30	0.95	-0.45	40°14'16.240"N	104°54'24.526"W	0.61	
417.00	0.540	170.330	416.99	-0.15	0.73	0.04	40°14'16.238"N	104°54'24.520"W	0.90	
517.00	0.720	255.320	516.99	0.47	0.11	-0.49	40°14'16.232"N	104°54'24.526"W	0.86	
617.00	0.590	323.410	616.98	1.33	0.36	-1.41	40°14'16.235"N	104°54'24.538"W	0.74	
717.00	0.500	328.210	716.98	1.75	1.15	-1.94	40°14'16.242"N	104°54'24.545"W	0.10	
765.00	0.700	251.420	764.97	2.12	1.23	-2.33	40°14'16.243"N	104°54'24.550"W	1.59	TIE-INTO GYRO SURVEYS
930.00	0.390	250.890	929.97	3.66	0.73	-3.82	40°14'16.238"N	104°54'24.569"W	0.19	BEGIN BHI MWD+IFR SURVEYS
1022.00	1.340	184.710	1021.96	4.22	-0.45	-4.20	40°14'16.227"N	104°54'24.574"W	1.34	
1113.00	2.630	156.950	1112.90	3.95	-3.43	-3.47	40°14'16.197"N	104°54'24.565"W	1.73	
1205.00	2.770	159.420	1204.80	2.97	-7.45	-1.86	40°14'16.157"N	104°54'24.544"W	0.20	
1296.00	4.640	156.020	1295.61	1.55	-12.87	0.41	40°14'16.104"N	104°54'24.515"W	2.07	
1387.00	6.150	151.550	1386.20	-1.07	-20.52	4.22	40°14'16.028"N	104°54'24.466"W	1.72	
1479.00	7.840	148.200	1477.51	-5.19	-30.19	9.88	40°14'15.933"N	104°54'24.393"W	1.89	
1571.00	9.940	146.840	1568.40	-10.94	-42.17	17.53	40°14'15.814"N	104°54'24.294"W	2.29	
1691.00	11.980	149.960	1686.21	-19.76	-61.62	29.43	40°14'15.622"N	104°54'24.141"W	1.77	
1782.00	14.140	145.370	1774.85	-28.06	-78.95	40.48	40°14'15.451"N	104°54'23.998"W	2.63	
1874.00	16.610	149.820	1863.56	-37.78	-99.57	53.48	40°14'15.247"N	104°54'23.830"W	2.97	
1966.00	17.350	150.350	1951.54	-47.50	-122.86	66.87	40°14'15.017"N	104°54'23.658"W	0.82	
2057.00	15.700	148.660	2038.78	-57.09	-145.16	79.99	40°14'14.796"N	104°54'23.489"W	1.89	
2148.00	15.570	146.480	2126.42	-66.95	-165.86	93.14	40°14'14.592"N	104°54'23.319"W	0.66	
2240.00	16.480	145.700	2214.84	-77.77	-186.94	107.31	40°14'14.384"N	104°54'23.136"W	1.02	
2331.00	17.290	142.890	2301.92	-89.78	-208.38	122.74	40°14'14.172"N	104°54'22.937"W	1.26	
2423.00	18.380	144.220	2389.50	-102.88	-231.06	139.47	40°14'13.948"N	104°54'22.722"W	1.26	
2515.00	19.400	146.740	2476.54	-115.83	-255.60	156.33	40°14'13.705"N	104°54'22.504"W	1.42	
2607.00	20.990	146.220	2562.88	-129.16	-282.07	173.88	40°14'13.444"N	104°54'22.278"W	1.74	
2698.00	19.010	146.980	2648.39	-142.17	-308.05	191.02	40°14'13.187"N	104°54'22.057"W	2.19	

Actual Wellpath Report

HOUSTON 33C-8HZ AWP

Page 3 of 8

REFERENCE WELLPATH IDENTIFICATION

Operator	KERR-MCGEE OIL & GAS ONSHORE LP	Slot	SLOT#32 HOUSTON 33C-8HZ
Area	COLORADO	Well	HOUSTON 33C-8HZ
Field	WELD COUNTY (KERR MCGEE)	Wellbore	HOUSTON 33C-8HZ AWB
Facility	SEC.08-T3N-R67W		

WELLPATH DATA (144 stations)

MD [ft]	Inclination [°]	Azimuth [°]	TVD [ft]	Vert Sect [ft]	North [ft]	East [ft]	Latitude	Longitude	DLS [°/100ft]	Comments
2790.00	17.920	146.480	2735.65	-154.28	-332.41	207.00	40°14'12.946"N	104°54'21.851"W	1.20	
2882.00	15.830	151.360	2823.69	-164.50	-355.23	220.83	40°14'12.721"N	104°54'21.673"W	2.74	
2972.00	15.170	149.690	2910.42	-173.02	-376.17	232.66	40°14'12.514"N	104°54'21.520"W	0.89	
3064.00	14.650	144.160	2999.33	-182.76	-396.00	245.55	40°14'12.318"N	104°54'21.354"W	1.65	
3155.00	14.530	148.070	3087.39	-192.50	-415.01	258.32	40°14'12.130"N	104°54'21.189"W	1.09	
3247.00	14.540	147.750	3176.45	-201.67	-434.57	270.59	40°14'11.937"N	104°54'21.031"W	0.09	
3339.00	15.590	144.970	3265.29	-211.76	-454.46	283.85	40°14'11.740"N	104°54'20.860"W	1.39	
3429.00	14.810	143.450	3352.14	-222.50	-473.61	297.64	40°14'11.551"N	104°54'20.682"W	0.97	
3518.00	15.610	146.850	3438.02	-232.76	-492.77	310.96	40°14'11.361"N	104°54'20.510"W	1.35	
3606.00	15.300	152.270	3522.84	-241.45	-512.96	322.84	40°14'11.162"N	104°54'20.357"W	1.68	
3693.00	16.470	152.210	3606.52	-249.22	-534.04	333.93	40°14'10.954"N	104°54'20.214"W	1.34	
3779.00	15.780	154.240	3689.14	-256.64	-555.35	344.70	40°14'10.743"N	104°54'20.075"W	1.04	
3864.00	15.700	153.830	3770.95	-263.47	-576.08	354.79	40°14'10.538"N	104°54'19.945"W	0.16	
3949.00	14.360	154.340	3853.04	-270.00	-595.91	364.43	40°14'10.342"N	104°54'19.821"W	1.58	
4037.00	13.460	146.880	3938.47	-277.41	-614.32	374.75	40°14'10.160"N	104°54'19.688"W	2.28	
4126.00	13.380	146.730	4025.03	-285.98	-631.61	386.06	40°14'09.989"N	104°54'19.542"W	0.10	
4211.00	14.170	148.960	4107.59	-294.02	-648.74	396.82	40°14'09.820"N	104°54'19.403"W	1.12	
4297.00	15.740	149.850	4190.67	-302.28	-667.85	408.11	40°14'09.631"N	104°54'19.258"W	1.84	
4382.00	17.600	150.510	4272.10	-311.06	-689.01	420.22	40°14'09.422"N	104°54'19.102"W	2.20	
4467.00	16.370	150.650	4353.39	-319.84	-710.64	432.42	40°14'09.209"N	104°54'18.944"W	1.45	
4552.00	14.880	148.760	4435.25	-328.24	-730.41	443.95	40°14'09.013"N	104°54'18.796"W	1.85	
4637.00	15.380	149.680	4517.30	-336.58	-749.47	455.30	40°14'08.825"N	104°54'18.649"W	0.65	
4722.00	15.160	147.550	4599.30	-345.20	-768.58	466.96	40°14'08.636"N	104°54'18.499"W	0.71	
4808.00	14.480	148.290	4682.44	-353.93	-787.22	478.64	40°14'08.452"N	104°54'18.348"W	0.82	
4978.00	7.970	145.720	4849.10	-367.34	-815.07	496.47	40°14'08.177"N	104°54'18.118"W	3.84	
5063.00	5.120	149.850	4933.54	-371.27	-823.22	501.70	40°14'08.096"N	104°54'18.051"W	3.40	
5149.00	3.280	154.770	5019.30	-373.37	-828.76	504.67	40°14'08.041"N	104°54'18.013"W	2.18	
5234.00	2.510	158.570	5104.19	-374.47	-832.69	506.39	40°14'08.002"N	104°54'17.991"W	0.93	
5319.00	1.720	155.180	5189.13	-375.24	-835.58	507.61	40°14'07.974"N	104°54'17.975"W	0.94	
5404.00	0.220	213.210	5274.12	-375.48	-836.88	508.05	40°14'07.961"N	104°54'17.969"W	1.90	

REFERENCE WELLPATH IDENTIFICATION

Operator	KERR-MCGEE OIL & GAS ONSHORE LP	Slot	SLOT#32 HOUSTON 33C-8HZ
Area	COLORADO	Well	HOUSTON 33C-8HZ
Field	WELD COUNTY (KERR MCGEE)	Wellbore	HOUSTON 33C-8HZ AWB
Facility	SEC.08-T3N-R67W		

WELLPATH DATA (144 stations)

MD [ft]	Inclination [°]	Azimuth [°]	TVD [ft]	Vert Sect [ft]	North [ft]	East [ft]	Latitude	Longitude	DLS [°/100ft]	Comments
5575.00	0.270	85.900	5445.12	-375.66	-837.12	508.27	40°14'07.959"N	104°54'17.966"W	0.26	
5831.00	0.690	323.440	5701.11	-375.55	-835.84	507.96	40°14'07.971"N	104°54'17.970"W	0.34	
6001.00	0.580	296.800	5871.10	-374.37	-834.63	506.58	40°14'07.983"N	104°54'17.988"W	0.18	
6171.00	0.510	261.660	6041.10	-372.91	-834.35	505.06	40°14'07.986"N	104°54'18.008"W	0.20	
6256.00	0.560	276.160	6126.09	-372.13	-834.36	504.28	40°14'07.986"N	104°54'18.018"W	0.17	
6427.00	0.840	288.620	6297.08	-370.21	-833.87	502.26	40°14'07.991"N	104°54'18.044"W	0.19	
6512.00	2.810	281.380	6382.03	-367.70	-833.26	499.62	40°14'07.997"N	104°54'18.078"W	2.33	
6597.00	2.870	283.960	6466.93	-363.78	-832.34	495.52	40°14'08.006"N	104°54'18.131"W	0.17	
6640.00	4.400	277.770	6509.84	-361.20	-831.86	492.84	40°14'08.011"N	104°54'18.165"W	3.67	
6682.00	7.570	273.300	6551.61	-356.95	-831.48	488.48	40°14'08.014"N	104°54'18.222"W	7.62	
6725.00	11.680	274.790	6593.99	-349.94	-830.95	481.31	40°14'08.020"N	104°54'18.314"W	9.57	
6768.00	14.980	273.810	6635.83	-340.28	-830.22	471.43	40°14'08.027"N	104°54'18.441"W	7.69	
6810.00	18.520	274.530	6676.04	-328.49	-829.33	459.36	40°14'08.036"N	104°54'18.597"W	8.44	
6853.00	21.800	275.180	6716.40	-314.09	-828.07	444.59	40°14'08.048"N	104°54'18.787"W	7.65	
6895.00	25.210	275.080	6754.91	-297.82	-826.58	427.91	40°14'08.063"N	104°54'19.002"W	8.12	
6938.00	28.260	273.770	6793.31	-278.99	-825.09	408.63	40°14'08.077"N	104°54'19.251"W	7.22	
6980.00	32.090	272.310	6829.61	-258.32	-823.99	387.55	40°14'08.088"N	104°54'19.523"W	9.28	
7023.00	35.330	271.430	6865.38	-234.86	-823.22	363.70	40°14'08.096"N	104°54'19.830"W	7.62	
7065.00	38.840	270.710	6898.88	-209.91	-822.75	338.38	40°14'08.101"N	104°54'20.157"W	8.42	
7108.00	42.080	269.580	6931.59	-182.34	-822.69	310.49	40°14'08.101"N	104°54'20.517"W	7.73	
7150.00	45.980	270.200	6961.78	-153.48	-822.74	281.30	40°14'08.101"N	104°54'20.893"W	9.34	
7193.00	49.610	270.920	6990.66	-122.05	-822.43	249.46	40°14'08.104"N	104°54'21.304"W	8.53	
7236.00	53.480	271.680	7017.40	-88.90	-821.66	215.80	40°14'08.111"N	104°54'21.737"W	9.11	
7278.00	57.820	272.430	7041.09	-54.85	-820.41	181.15	40°14'08.124"N	104°54'22.184"W	10.44	
7320.00	61.650	273.260	7062.26	-19.31	-818.60	144.93	40°14'08.142"N	104°54'22.651"W	9.28	
7362.00	65.280	272.000	7081.02	17.52	-816.88	107.40	40°14'08.159"N	104°54'23.135"W	9.05	
7405.00	69.630	272.610	7097.50	56.50	-815.28	67.73	40°14'08.174"N	104°54'23.647"W	10.20	
7447.00	73.790	271.650	7110.68	95.65	-813.81	27.89	40°14'08.189"N	104°54'24.160"W	10.14	
7490.00	78.560	272.180	7120.95	136.68	-812.41	-13.83	40°14'08.203"N	104°54'24.698"W	11.16	
7501.00	80.000	272.390	7123.00	147.29	-811.98	-24.63	40°14'08.207"N	104°54'24.838"W	13.22	

REFERENCE WELLPATH IDENTIFICATION

Operator	KERR-MCGEE OIL & GAS ONSHORE LP	Slot	SLOT#32 HOUSTON 33C-8HZ
Area	COLORADO	Well	HOUSTON 33C-8HZ
Field	WELD COUNTY (KERR MCGEE)	Wellbore	HOUSTON 33C-8HZ AWP
Facility	SEC.08-T3N-R67W		

WELLPATH DATA (144 stations) † = interpolated/extrapolated station

MD [ft]	Inclination [°]	Azimuth [°]	TVD [ft]	Vert Sect [ft]	North [ft]	East [ft]	Latitude	Longitude	DLS [°/100ft]	Comments
7548.00†	83.745	272.405	7129.64	192.94	-810.03	-71.11	40°14'08.226"N	104°54'25.437"W	7.97	7" CASING POINT
7597.00	87.650	272.420	7133.31	240.87	-807.98	-119.92	40°14'08.247"N	104°54'26.066"W	7.97	
7652.00	90.210	272.750	7134.34	294.79	-805.50	-174.85	40°14'08.271"N	104°54'26.775"W	4.69	
7727.00	90.460	271.740	7133.90	368.43	-802.56	-249.79	40°14'08.300"N	104°54'27.741"W	1.39	
7813.00	91.260	270.850	7132.61	453.11	-800.61	-335.76	40°14'08.319"N	104°54'28.849"W	1.39	
7898.00	91.600	270.840	7130.49	536.90	-799.36	-420.72	40°14'08.332"N	104°54'29.945"W	0.40	
7983.00	91.260	270.660	7128.37	620.72	-798.25	-505.69	40°14'08.343"N	104°54'31.040"W	0.45	
8068.00	90.090	270.130	7127.37	704.64	-797.66	-590.68	40°14'08.348"N	104°54'32.136"W	1.51	
8153.00	90.520	270.870	7126.92	788.54	-796.92	-675.67	40°14'08.356"N	104°54'33.232"W	1.01	
8239.00	89.960	270.840	7126.56	873.35	-795.64	-761.66	40°14'08.368"N	104°54'34.341"W	0.65	
8324.00	90.030	270.730	7126.56	957.18	-794.47	-846.65	40°14'08.380"N	104°54'35.437"W	0.15	
8409.00	89.630	271.550	7126.82	1040.93	-792.78	-931.63	40°14'08.397"N	104°54'36.533"W	1.07	
8494.00	89.720	271.340	7127.30	1124.60	-790.64	-1016.61	40°14'08.418"N	104°54'37.628"W	0.27	
8580.00	89.560	270.750	7127.84	1209.35	-789.07	-1102.59	40°14'08.433"N	104°54'38.737"W	0.71	
8665.00	89.690	270.820	7128.39	1293.19	-787.91	-1187.58	40°14'08.445"N	104°54'39.833"W	0.17	
8750.00	89.690	270.810	7128.85	1377.01	-786.70	-1272.57	40°14'08.457"N	104°54'40.929"W	0.01	
8835.00	90.090	271.750	7129.02	1460.72	-784.80	-1357.55	40°14'08.475"N	104°54'42.024"W	1.20	
8920.00	90.650	272.130	7128.47	1544.26	-781.92	-1442.50	40°14'08.504"N	104°54'43.120"W	0.80	
9005.00	89.870	272.410	7128.08	1627.70	-778.55	-1527.43	40°14'08.537"N	104°54'44.215"W	0.97	
9091.00	90.150	272.610	7128.07	1712.06	-774.79	-1613.34	40°14'08.574"N	104°54'45.323"W	0.40	
9176.00	89.560	273.200	7128.28	1795.32	-770.48	-1698.23	40°14'08.617"N	104°54'46.417"W	0.98	
9261.00	89.750	273.390	7128.79	1878.46	-765.60	-1783.09	40°14'08.665"N	104°54'47.511"W	0.32	
9346.00	90.330	273.030	7128.74	1961.62	-760.84	-1867.96	40°14'08.712"N	104°54'48.606"W	0.80	
9432.00	89.930	271.550	7128.54	2046.04	-757.40	-1953.89	40°14'08.746"N	104°54'49.714"W	1.78	
9517.00	90.000	271.050	7128.59	2129.75	-755.47	-2038.86	40°14'08.765"N	104°54'50.809"W	0.59	
9602.00	89.630	270.610	7128.87	2213.57	-754.24	-2123.86	40°14'08.777"N	104°54'51.905"W	0.68	
9687.00	89.750	270.240	7129.33	2297.49	-753.61	-2208.85	40°14'08.783"N	104°54'53.001"W	0.46	
9773.00	89.440	270.750	7129.93	2382.38	-752.87	-2294.85	40°14'08.790"N	104°54'54.110"W	0.69	
9858.00	89.440	271.330	7130.77	2466.15	-751.32	-2379.83	40°14'08.805"N	104°54'55.206"W	0.68	
9943.00	88.760	270.710	7132.10	2549.92	-749.81	-2464.80	40°14'08.820"N	104°54'56.301"W	1.08	

REFERENCE WELLPATH IDENTIFICATION

Operator	KERR-MCGEE OIL & GAS ONSHORE LP	Slot	SLOT#32 HOUSTON 33C-8HZ
Area	COLORADO	Well	HOUSTON 33C-8HZ
Field	WELD COUNTY (KERR MCGEE)	Wellbore	HOUSTON 33C-8HZ AWP
Facility	SEC.08-T3N-R67W		

WELLPATH DATA (144 stations)

MD [ft]	Inclination [°]	Azimuth [°]	TVD [ft]	Vert Sect [ft]	North [ft]	East [ft]	Latitude	Longitude	DLS [°/100ft]	Comments
10028.00	90.000	272.070	7133.02	2633.59	-747.75	-2549.77	40°14'08.841"N	104°54'57.397"W	2.17	
10113.00	90.520	272.740	7132.63	2716.99	-744.18	-2634.69	40°14'08.876"N	104°54'58.492"W	1.00	
10198.00	90.150	272.690	7132.14	2800.31	-740.16	-2719.60	40°14'08.915"N	104°54'59.587"W	0.44	
10283.00	90.430	272.660	7131.71	2883.64	-736.19	-2804.50	40°14'08.954"N	104°55'00.682"W	0.33	
10368.00	90.740	272.820	7130.84	2966.94	-732.13	-2889.40	40°14'08.995"N	104°55'01.776"W	0.41	
10454.00	90.430	272.530	7129.96	3051.24	-728.11	-2975.30	40°14'09.034"N	104°55'02.884"W	0.49	
10539.00	90.550	272.170	7129.23	3134.66	-724.63	-3060.23	40°14'09.068"N	104°55'03.979"W	0.45	
10624.00	90.950	272.090	7128.12	3218.14	-721.47	-3145.16	40°14'09.100"N	104°55'05.074"W	0.48	
10709.00	90.580	271.630	7126.99	3301.69	-718.71	-3230.11	40°14'09.127"N	104°55'06.169"W	0.69	
10794.00	90.030	272.080	7126.53	3385.25	-715.96	-3315.06	40°14'09.154"N	104°55'07.265"W	0.84	
10879.00	90.030	271.900	7126.49	3468.77	-713.01	-3400.01	40°14'09.183"N	104°55'08.360"W	0.21	
10965.00	90.210	272.040	7126.31	3553.28	-710.05	-3485.96	40°14'09.212"N	104°55'09.468"W	0.27	
11050.00	90.270	272.120	7125.95	3636.78	-706.97	-3570.90	40°14'09.242"N	104°55'10.564"W	0.12	
11135.00	90.150	271.470	7125.64	3720.35	-704.30	-3655.86	40°14'09.268"N	104°55'11.659"W	0.78	
11220.00	90.550	271.700	7125.12	3803.98	-701.95	-3740.83	40°14'09.292"N	104°55'12.755"W	0.54	
11306.00	90.670	271.360	7124.21	3888.61	-699.66	-3826.79	40°14'09.314"N	104°55'13.863"W	0.42	
11391.00	90.150	271.150	7123.60	3972.32	-697.79	-3911.77	40°14'09.332"N	104°55'14.959"W	0.66	
11476.00	89.590	271.600	7123.79	4056.01	-695.75	-3996.74	40°14'09.352"N	104°55'16.054"W	0.85	
11561.00	89.810	271.240	7124.24	4139.68	-693.65	-4081.71	40°14'09.373"N	104°55'17.150"W	0.50	
11647.00	89.960	271.100	7124.41	4224.41	-691.89	-4167.70	40°14'09.390"N	104°55'18.259"W	0.24	
11732.00	90.030	270.950	7124.42	4308.18	-690.37	-4252.68	40°14'09.405"N	104°55'19.355"W	0.19	
11817.00	89.620	270.090	7124.68	4392.08	-689.60	-4337.68	40°14'09.413"N	104°55'20.451"W	1.12	
11926.00	89.040	269.050	7125.95	4499.94	-690.42	-4446.66	40°14'09.404"N	104°55'21.856"W	1.09	LAST BHI MWD+IFR SURVEYS
11994.00	89.040	269.050	7127.09	4567.30	-691.55	-4514.65	40°14'09.393"N	104°55'22.732"W	0.00	PROJECTION TO BIT

REFERENCE WELLPATH IDENTIFICATION

Operator	KERR-MCGEE OIL & GAS ONSHORE LP	Slot	SLOT#32 HOUSTON 33C-8HZ
Area	COLORADO	Well	HOUSTON 33C-8HZ
Field	WELD COUNTY (KERR MCGEE)	Wellbore	HOUSTON 33C-8HZ AWP
Facility	SEC.08-T3N-R67W		

HOLE & CASING SECTIONS - Ref Wellbore: HOUSTON 33C-8HZ AWP Ref Wellpath: HOUSTON 33C-8HZ AWP

String/Diameter	Start MD [ft]	End MD [ft]	Interval [ft]	Start TVD [ft]	End TVD [ft]	Start N/S [ft]	Start E/W [ft]	End N/S [ft]	End E/W [ft]
13.5in Open Hole	17.00	827.00	810.00	17.00	826.97	0.00	0.00	1.01	-2.99
9.625in Casing Surface	17.00	827.00	810.00	17.00	826.97	0.00	0.00	1.01	-2.99
8.75in Open Hole	827.00	7558.00	6731.00	826.97	7130.66	1.01	-2.99	-809.61	-81.05
7in Casing Intermediate	17.00	7548.00	7531.00	17.00	7129.64	0.00	0.00	-810.03	-71.11
6.125in Open Hole	7558.00	11994.00	4436.00	7130.66	7127.09	-809.61	-81.05	-691.55	-4514.65

TARGETS

Name	MD [ft]	TVD [ft]	North [ft]	East [ft]	Grid East [US ft]	Grid North [US ft]	Latitude	Longitude	Shape
SEC.08-T3N-R67W SECTION LINES		-9.00	2249.97	255.75	3165843.86	1332293.12	40°14'38.465"N	104°54'21.222"W	polygon
HOUSTON 33C-8HZ BHL (1015'FSL & 50'FWL, SEC. 08) REV-2		7124.00	-686.68	-4540.00	3161068.08	1329324.58	40°14'09.441"N	104°55'23.059"W	point
HOUSTON 33C-8HZ BHL ON PLAT (940'FSL & 50'FWL, SEC. 08) REV-1		7124.00	-761.68	-4540.00	3161068.58	1329249.59	40°14'08.700"N	104°55'23.059"W	point
HOUSTON 33C-8HZ LAND BOX		7124.00	0.00	0.00	3165603.18	1330041.59	40°14'16.231"N	104°54'24.520"W	polygon

WELLPATH COMPOSITION - Ref Wellbore: HOUSTON 33C-8HZ AWP Ref Wellpath: HOUSTON 33C-8HZ AWP

Start MD [ft]	End MD [ft]	Positional Uncertainty Model	Log Name/Comment	Wellbore
17.00	765.00	Generic gyro - continuous (Standard)	MS ENERGY GYRO SURVEYS <117-765>	HOUSTON 33C-8HZ AWP
765.00	7501.00	NaviTrak (IFR)	BHI MWD/ NAVITRAK (IFR) 8.75" HOLE <930-7501>	HOUSTON 33C-8HZ AWP
7501.00	11926.00	NaviTrak (IFR)	BHI MWD/NAVITRAK (IFR) 6.125" HOLE <7597-11926>	HOUSTON 33C-8HZ AWP
11926.00	11994.00	Blind Drilling (std)	Projection to bit	HOUSTON 33C-8HZ AWP

Actual Wellpath Report

HOUSTON 33C-8HZ AWP

Page 8 of 8

REFERENCE WELLPATH IDENTIFICATION

Operator	KERR-MCGEE OIL & GAS ONSHORE LP	Slot	SLOT#32 HOUSTON 33C-8HZ
Area	COLORADO	Well	HOUSTON 33C-8HZ
Field	WELD COUNTY (KERR MCGEE)	Wellbore	HOUSTON 33C-8HZ AWB
Facility	SEC.08-T3N-R67W		

WELLPATH COMMENTS

MD [ft]	Inclination [°]	Azimuth [°]	TVD [ft]	Comment
17.00	0.000	252.790	17.00	TIE-ON
117.00	0.430	252.790	117.00	BEGIN GYRO SURVEYS
765.00	0.700	251.420	764.97	TIE-INTO GYRO SURVEYS
930.00	0.390	250.890	929.97	BEGIN BHI MWD+IFR SURVEYS
7548.00	83.745	272.405	7129.64	7" CASING POINT
11926.00	89.040	269.050	7125.95	LAST BHI MWD+IFR SURVEYS
11994.00	89.040	269.050	7127.09	PROJECTION TO BIT