

Crew								
Name	Arrive	Depart	Name	Arrive	Depart	Name	Arrive	Depart
	Wellsite	Wellsite		Wellsite	Wellsite		Wellsite	Wellsite
Shirley Arimah	11/May/2014	12/May/2014	David Cambell	13/May/2014	13/May/2014	Eric Smith	11/May/2014	18/May/2014
Kevin Sheridan	14/May/2014	18/May/2014						

Mud Properties Record

Date / Time		LWD Run No.	Measured Depth (ft.)	Mud Type	Density (sg)	Viscosity (cp)	pH	Fluid Loss (cc)	Oil / Water	Source	Total Chlorides (ppm)	K+ (%)
13/May/2014	21:30	2	6575	Water Base	9.4	40	N/A	0.0	1/91	Active Mud Pits	1800	N/A
17/May/2014	21:30	3	8415	Water Base	9.7	40	N/A	0.0	1/90	Active Mud Pits	1900	N/A

Mnemonics

Curve	Description	Units
GRAX	Gamma Ray Apparent	API 0.5 ft. avg.
GRIX	Gamma Ray Density	Points
ROP_AVG	Rate of Penetration	ft/hr 3.0 ft. avg.
TCDX	Downhole Temperature	deg F
TVD	True Vertical Depth	ft.
WOB_AVG	Surface Weight On Bit	klbf 1.0 ft. avg.

Equipment and Service Data

LWD Run No.	Tool	Serial Number	Measurement	Bit Offset (ft.)	Max O.D. (in.)	Min I.D. (in.)
1	DIR	12546343	Directional	61.66	6.750	3.250
1	SRIG	11732967	Gamma	58.61	6.750	3.250
2	DIR	12546343	Directional	55.29	6.750	3.250
2	SRIG	11732967	Gamma	51.84	6.750	3.250
3	SRIG	12600744	Gamma	62.89	4.750	1.750
3	DIR	13099217	Directional	66.57	4.750	1.750

Service and Tool Mnemonics

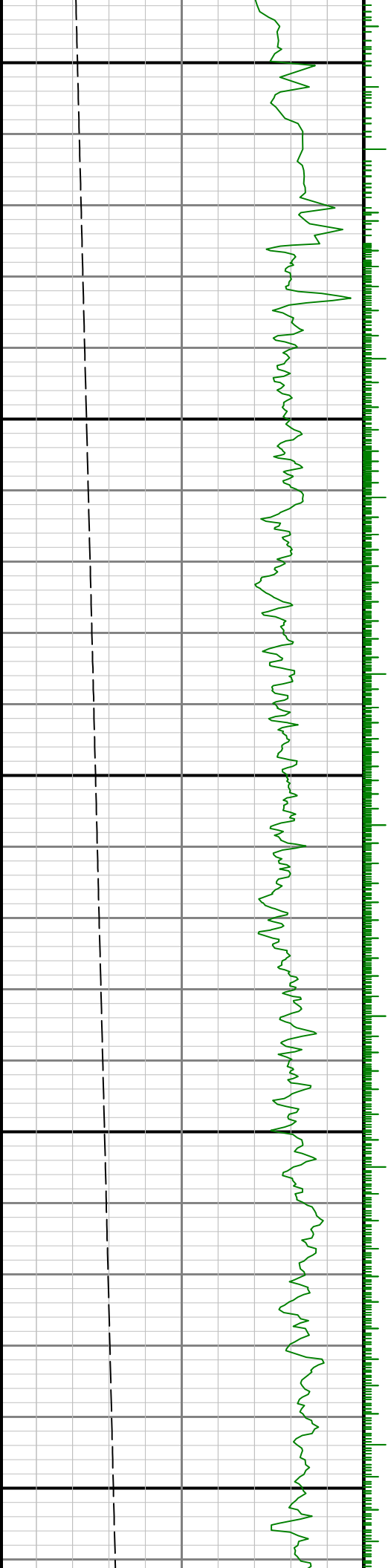
Mnemonic	Name	Description
DIR	Directional	Wellbore directional survey
SRIG	Inclination and Gamma	Probe based gamma ray and inclination module

Comments

<p>1) Depth measurements obtained from a depth control system not supplied or operated by Baker Hughes INTEQ. Due to lack of control by Baker Hughes INTEQ logging engineers depth calibrations and measures could not be independently verified.</p> <p>2) Baker Hughes INTEQ run 1 and 2 utilized a 6 1/2 inch NaviGamma (Gamma Ray and Directional) tool behind a 8 3/4 inch bit from 6440 to 7558 feet MD (6310 to 7130 feet TVD).</p> <p>3) Baker Hughes INTEQ run 3 utilized a 4 1/2 inch NaviGamma (Gamma Ray and Directional) tool behind a 6 1/8 inch bit from 7558 to 11994 feet MD (7130 to 7127 feet TVD).</p>
--

Remarks

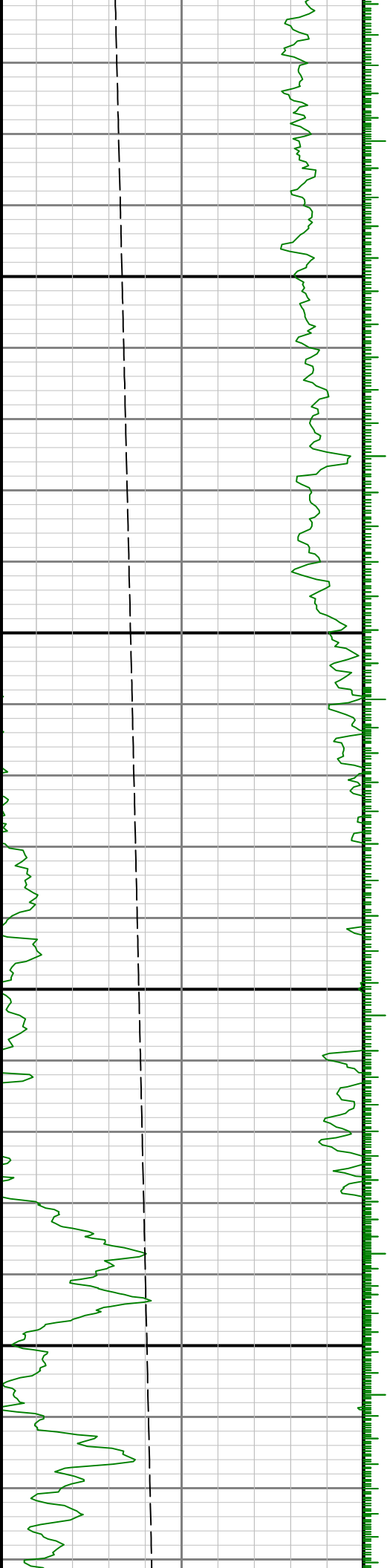
Number	Measured Depth	Hole Section	LWD Run No.	Remark
--------	-------------------	-----------------	----------------	--------



0099

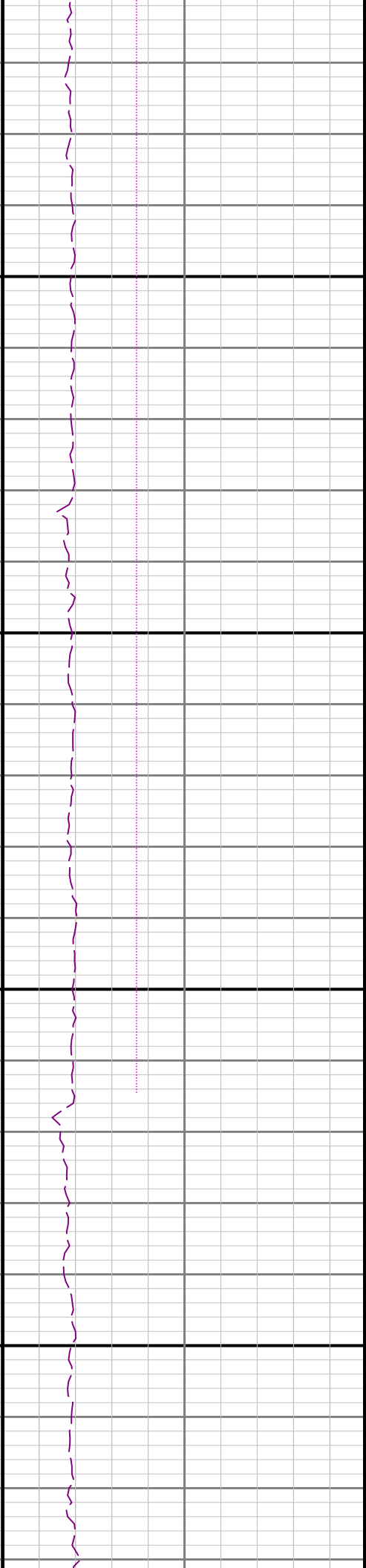
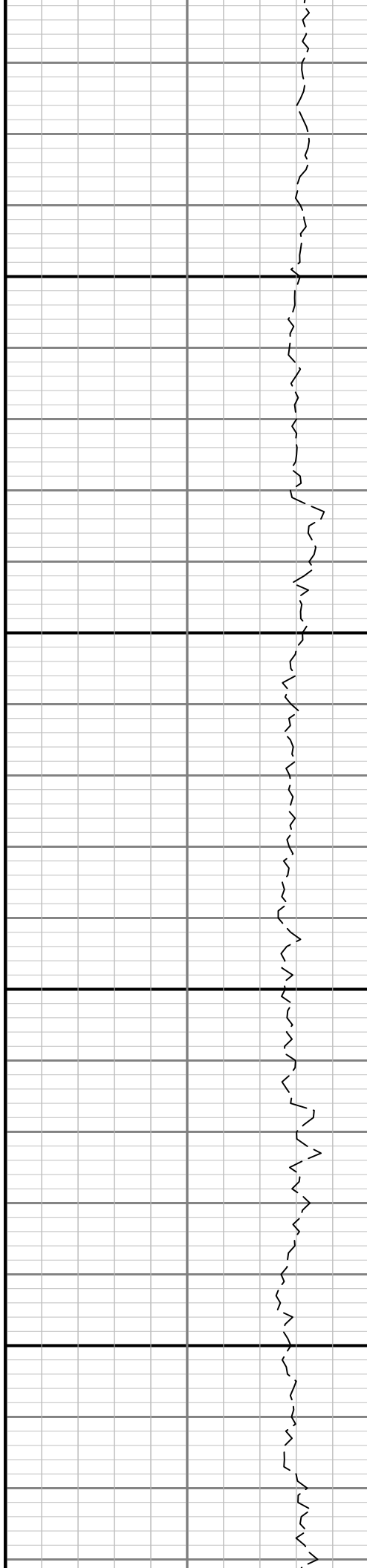
6700

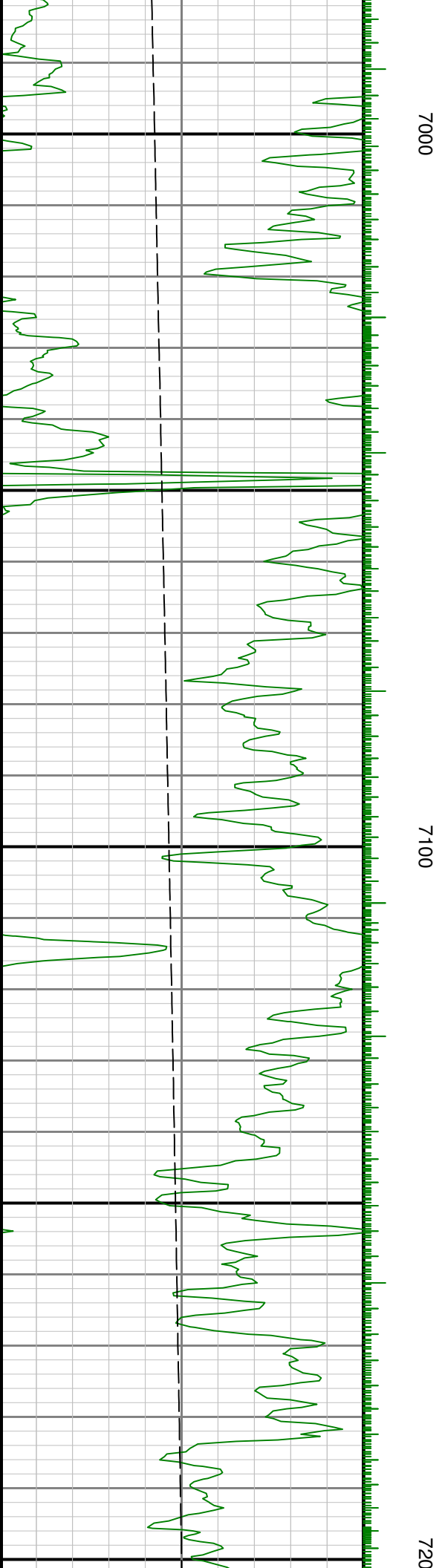
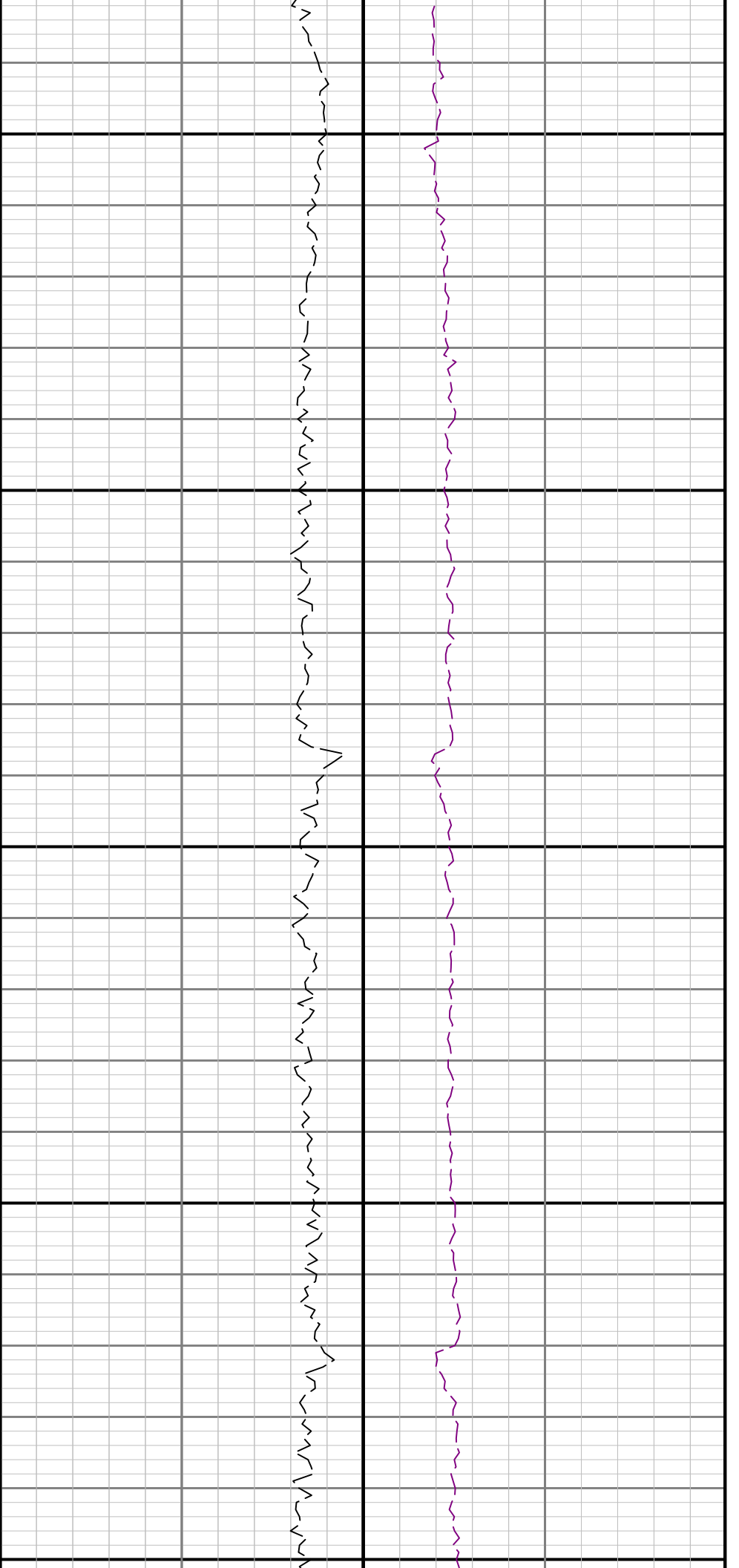


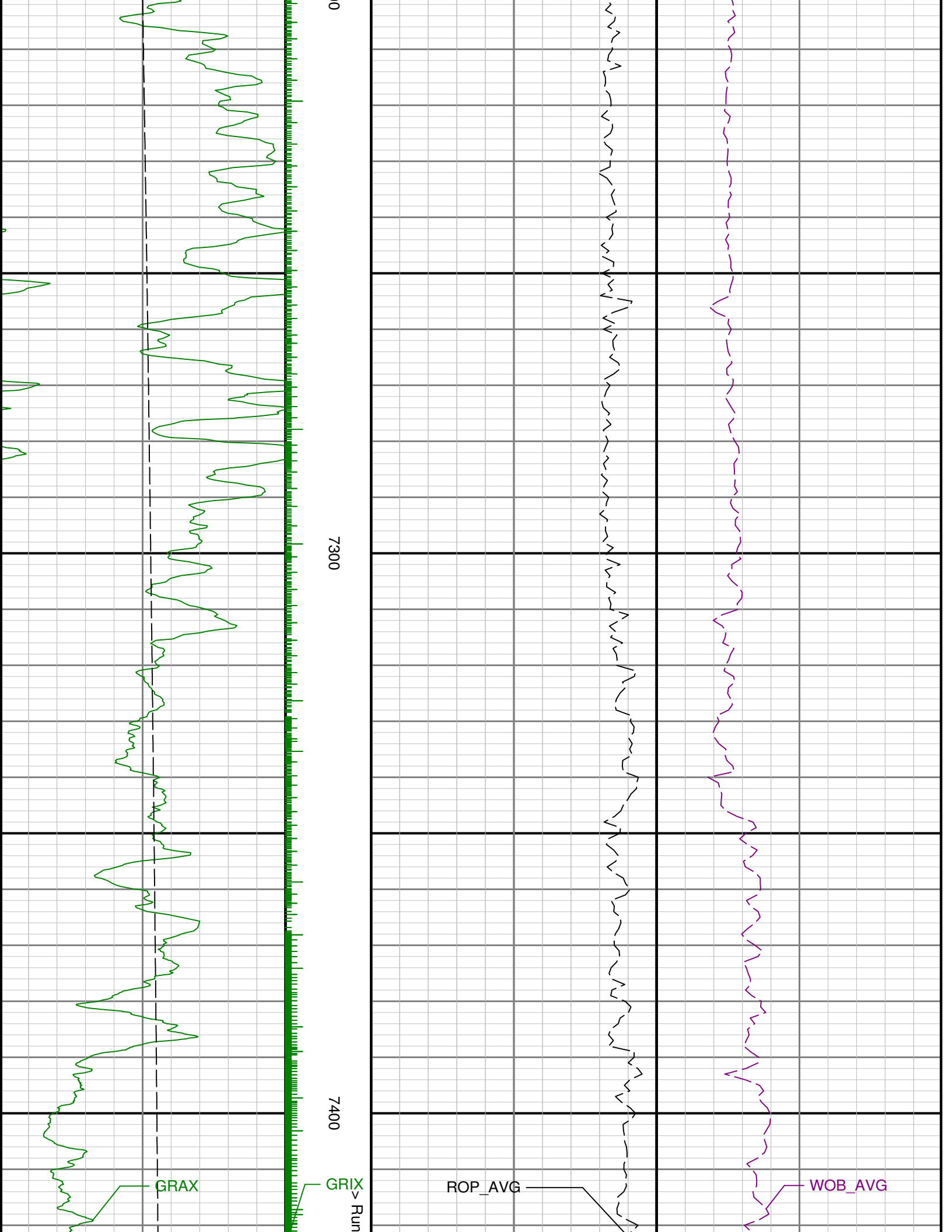


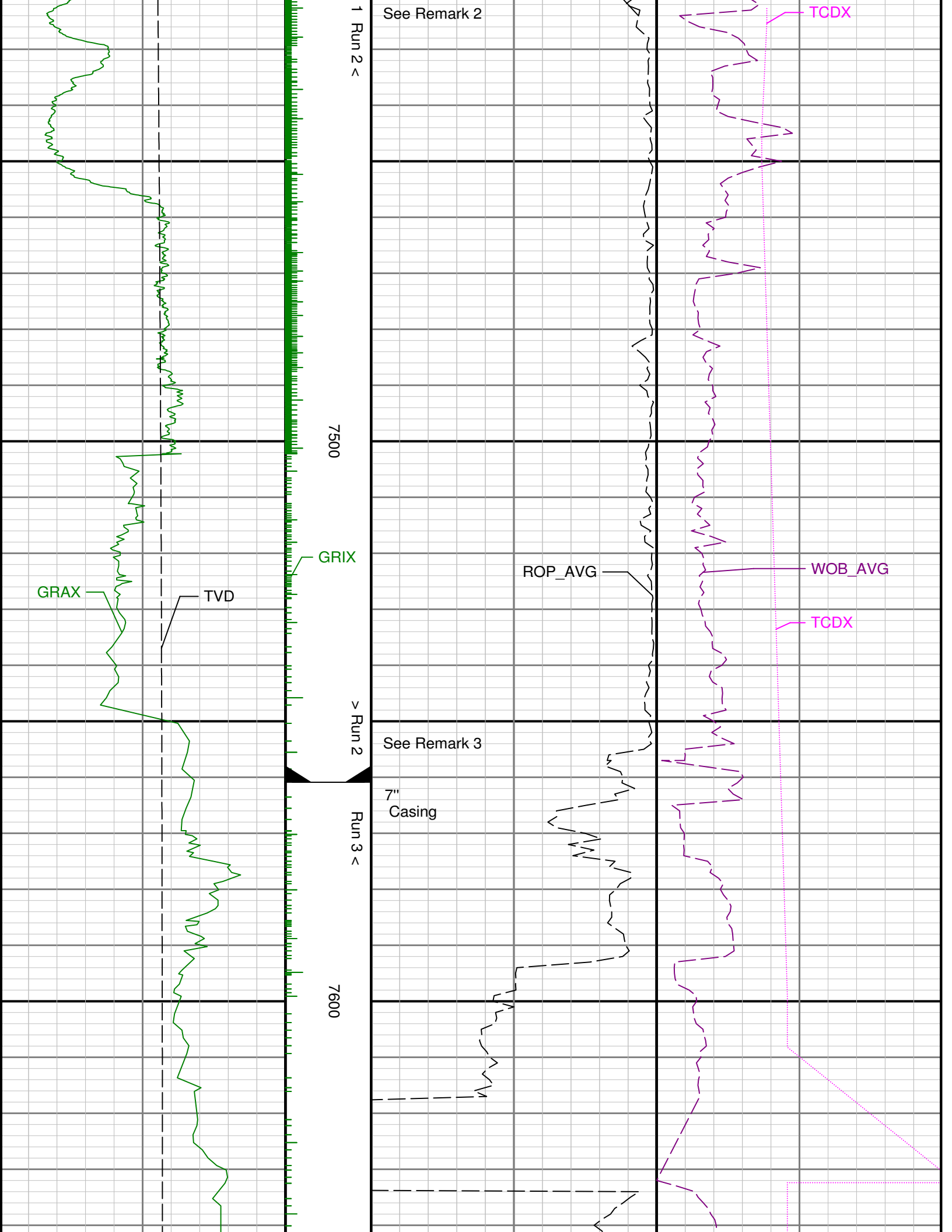
0069

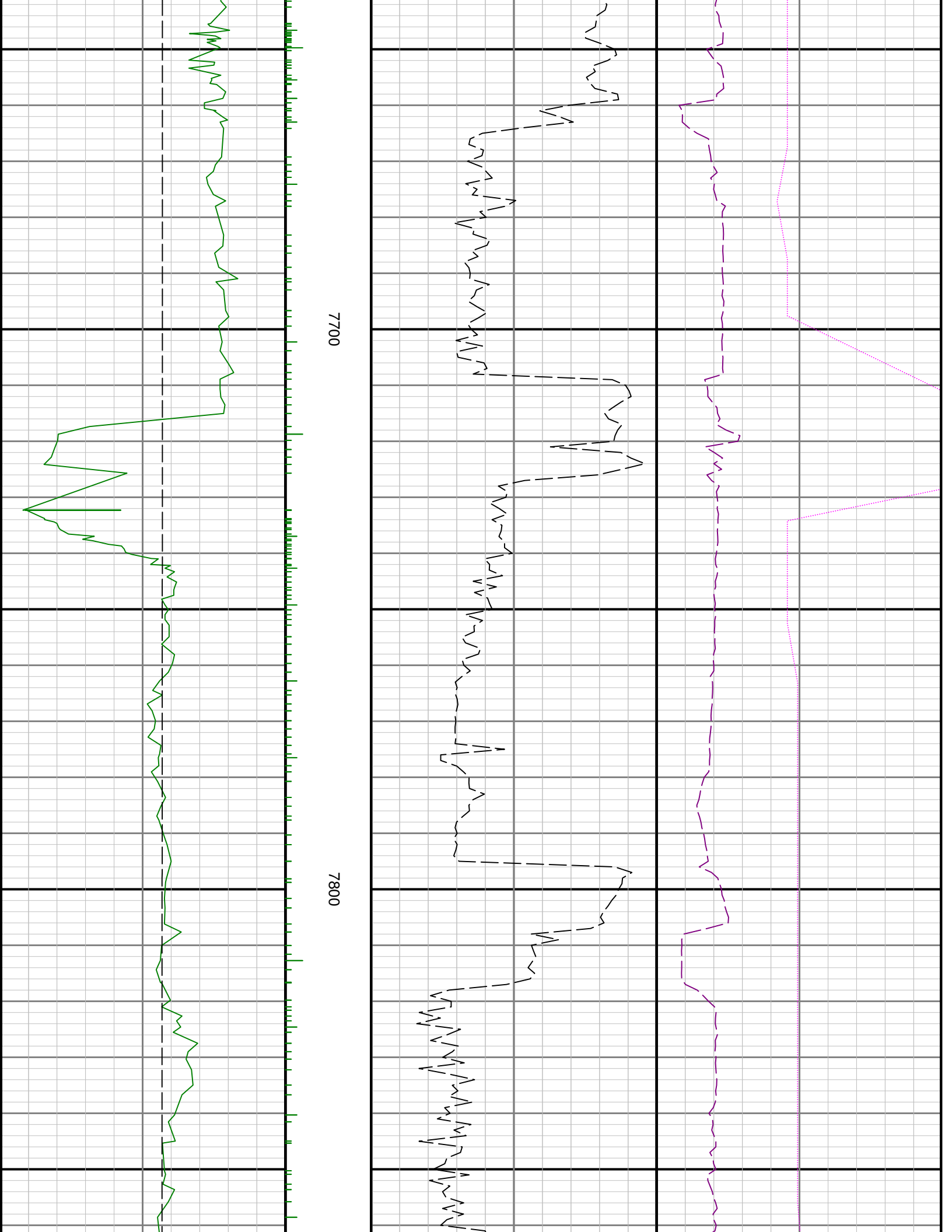
0089

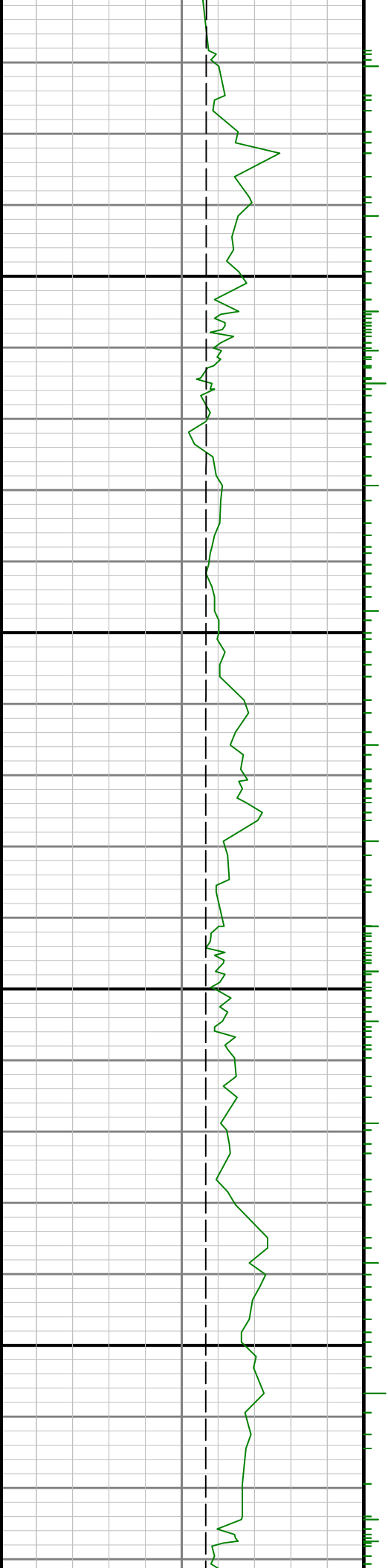






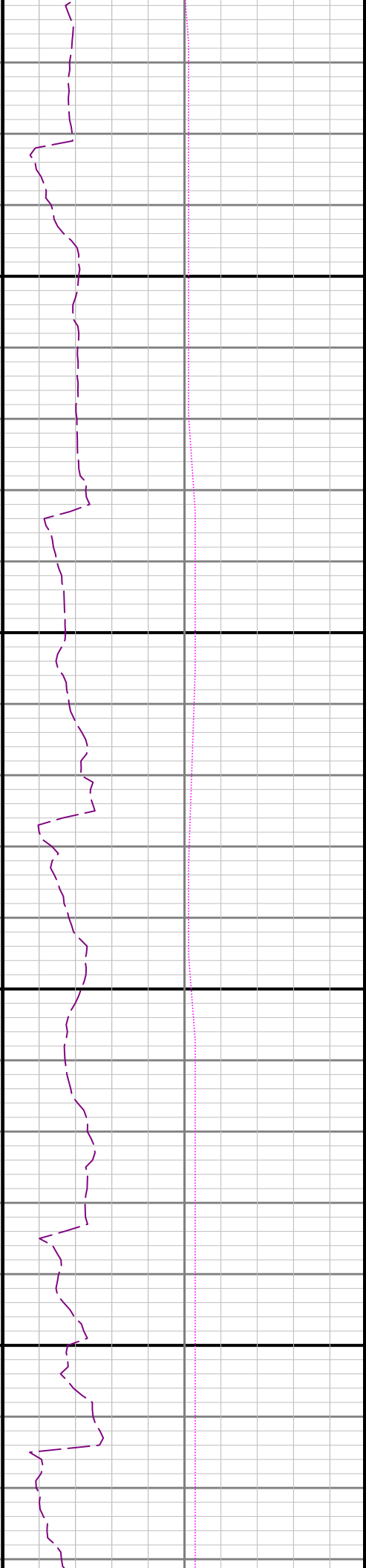


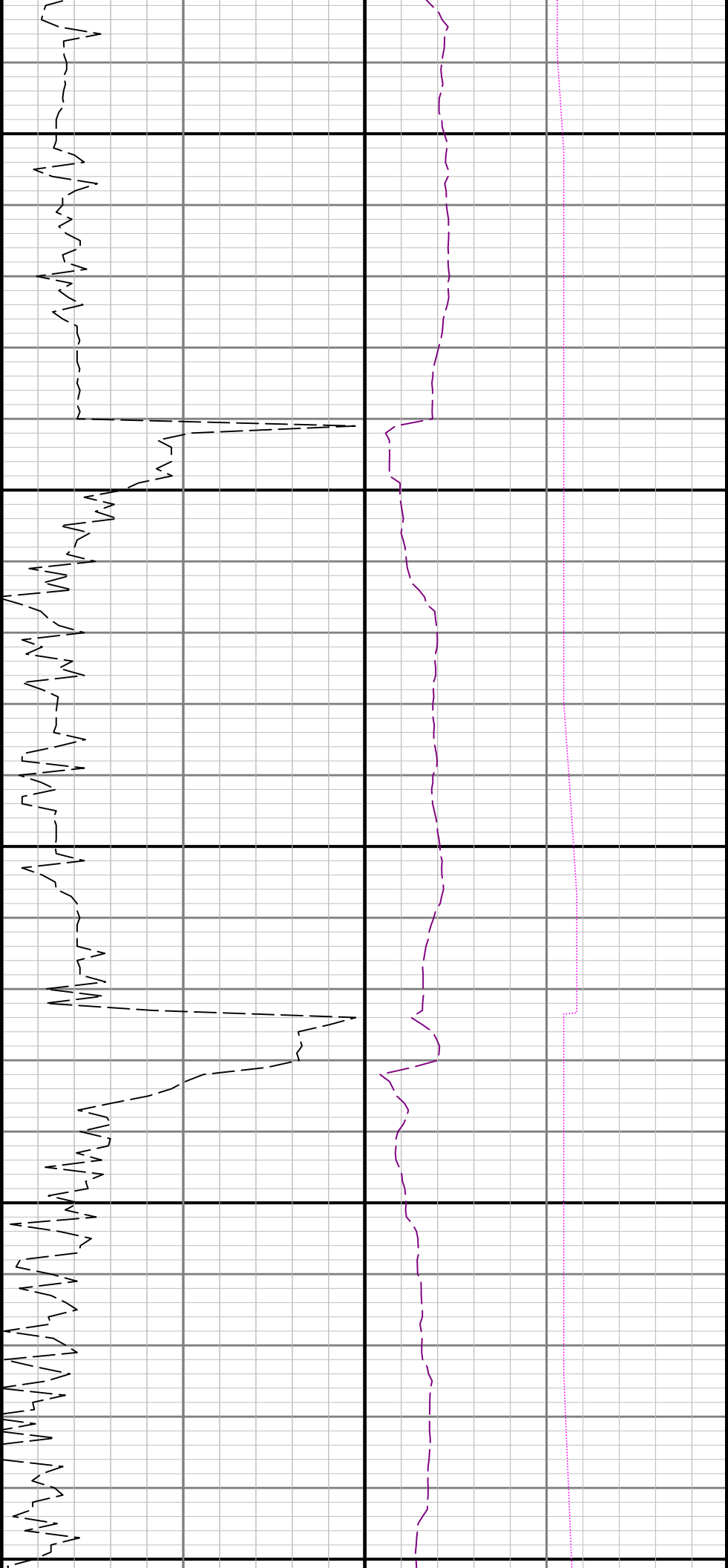




7900

8008

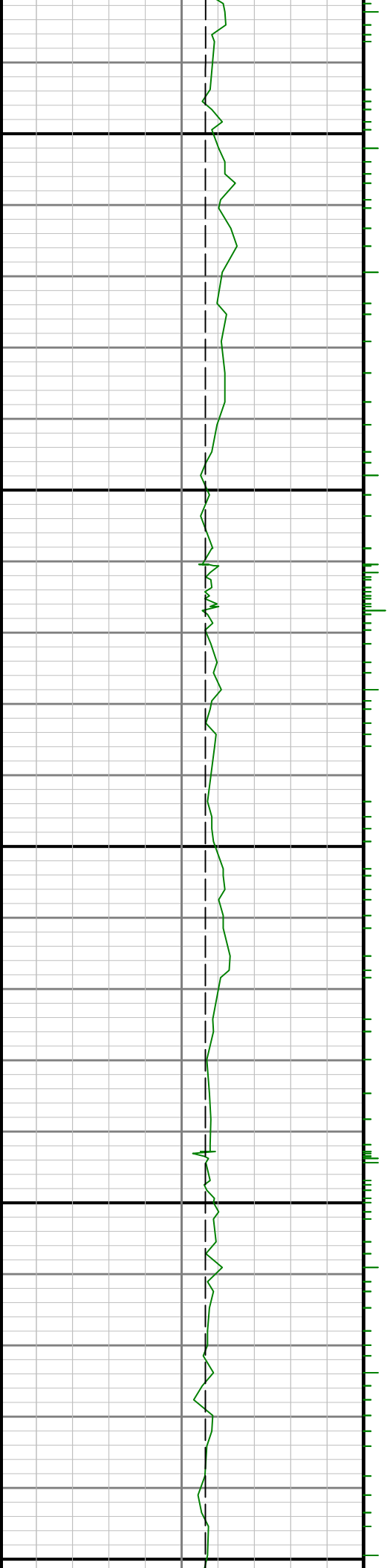


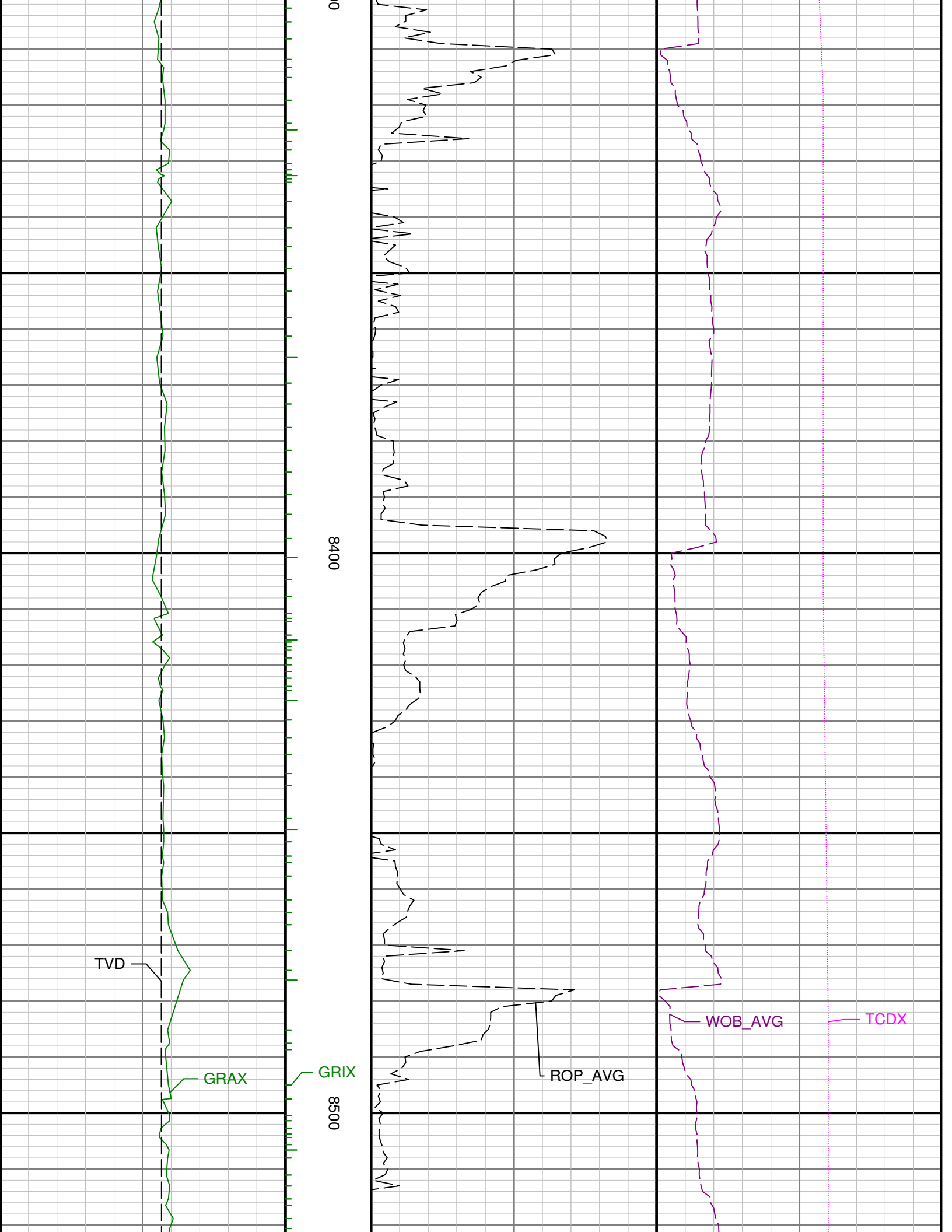


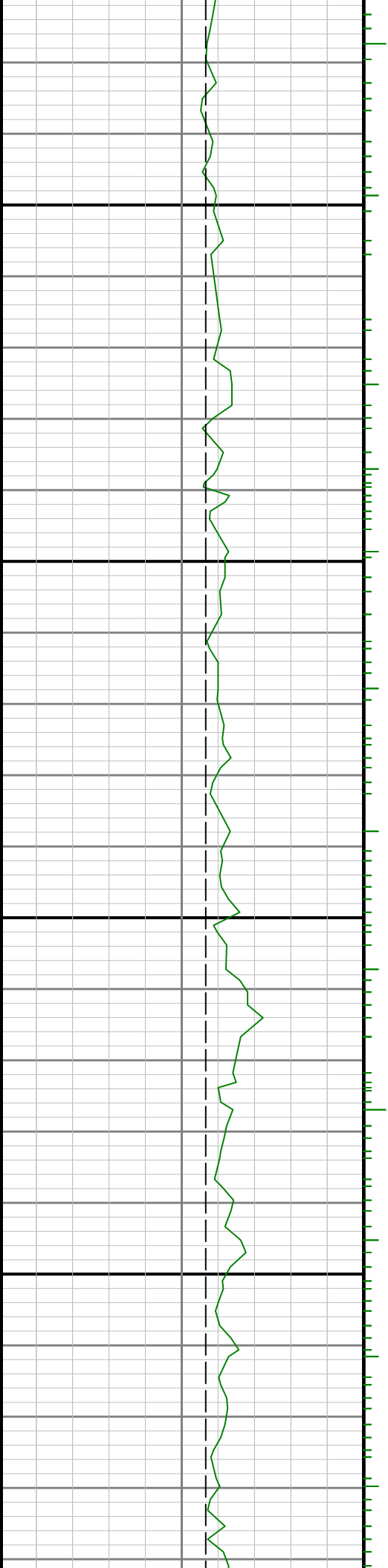
8100

8200

8300

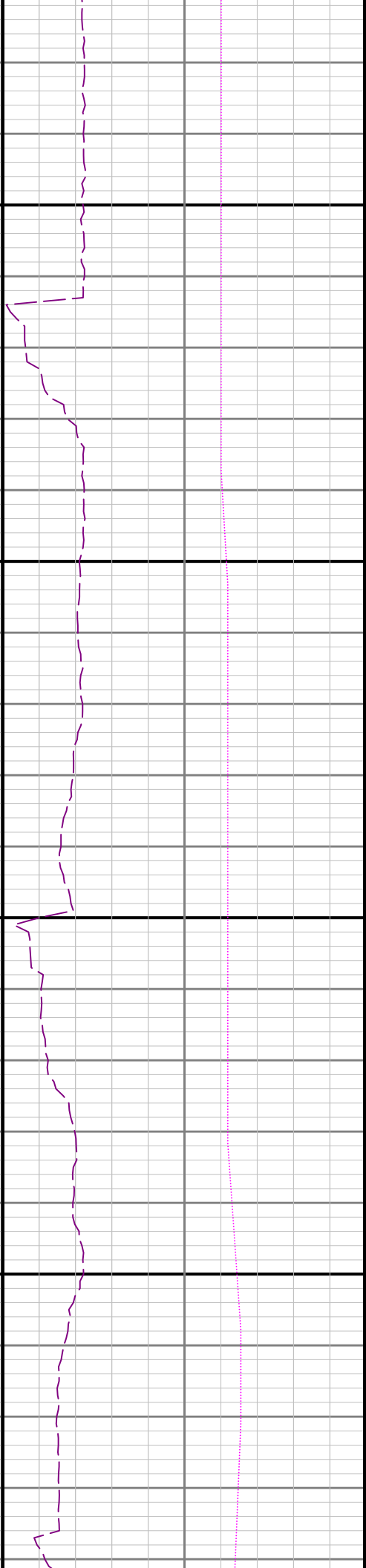


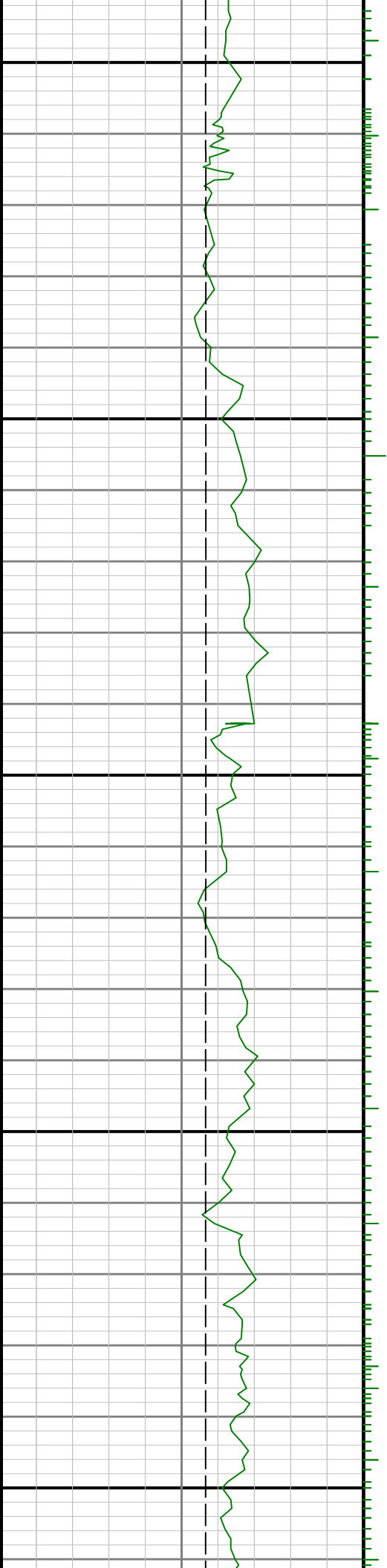




0098

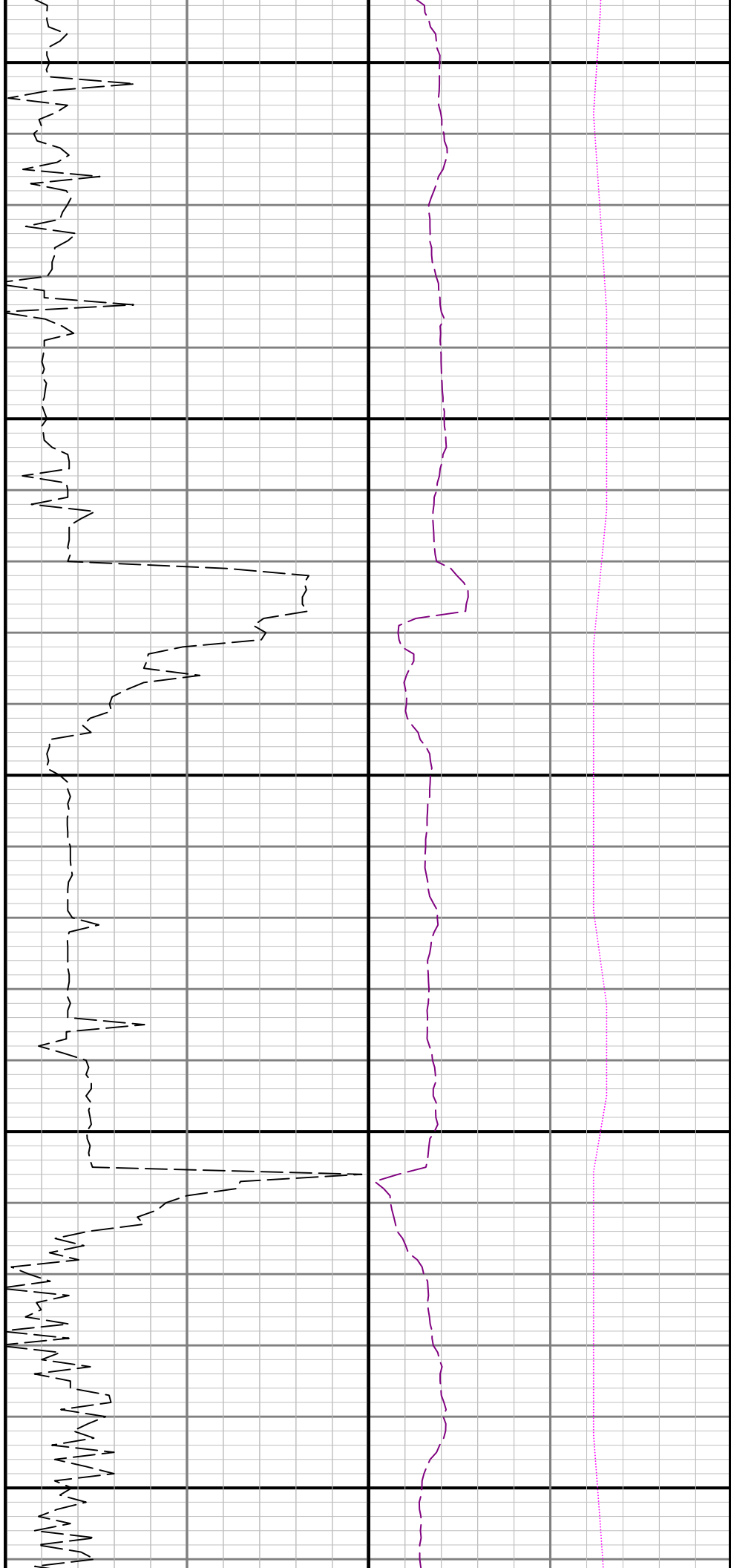
8700

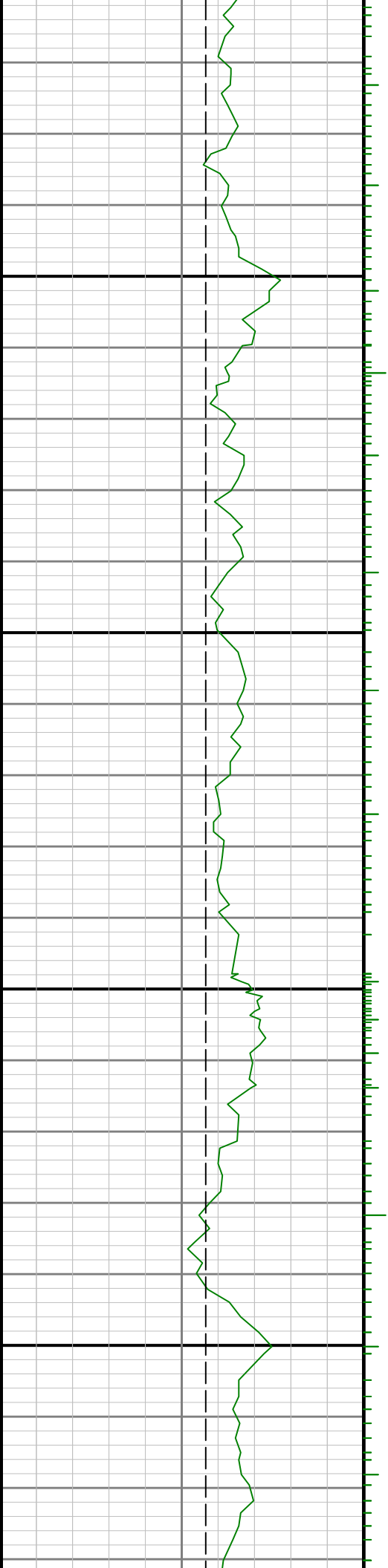




0088

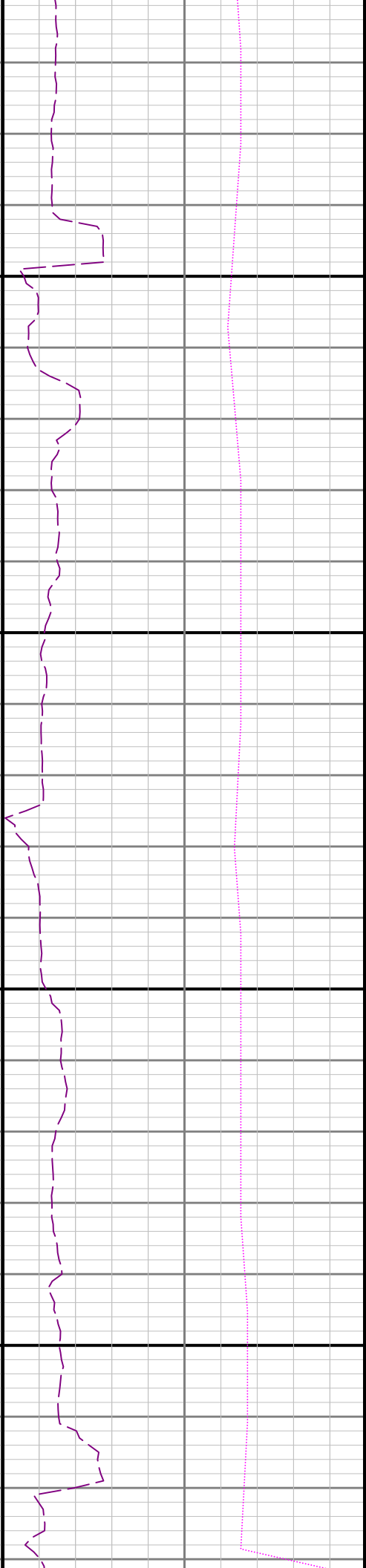
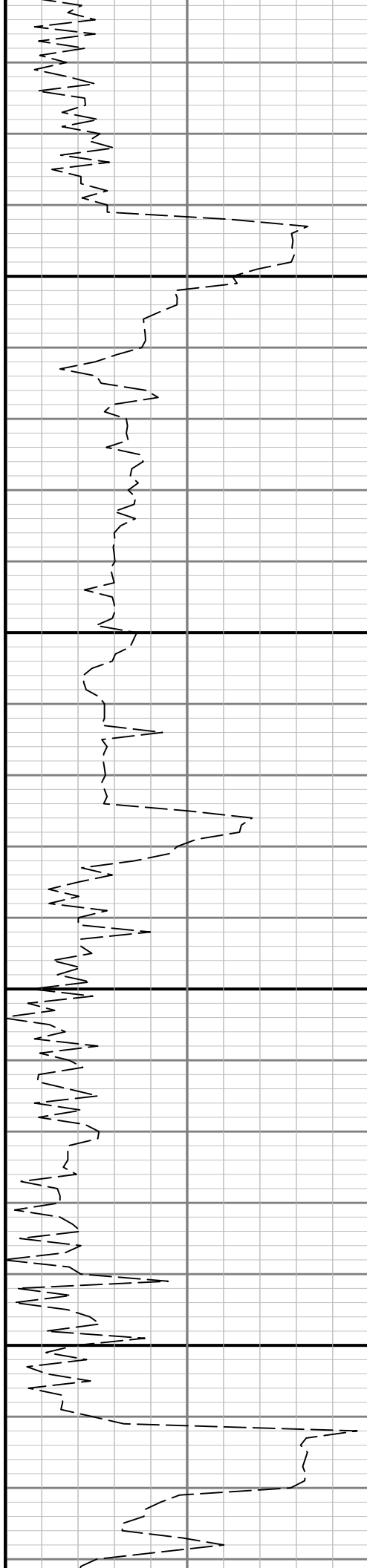
0068

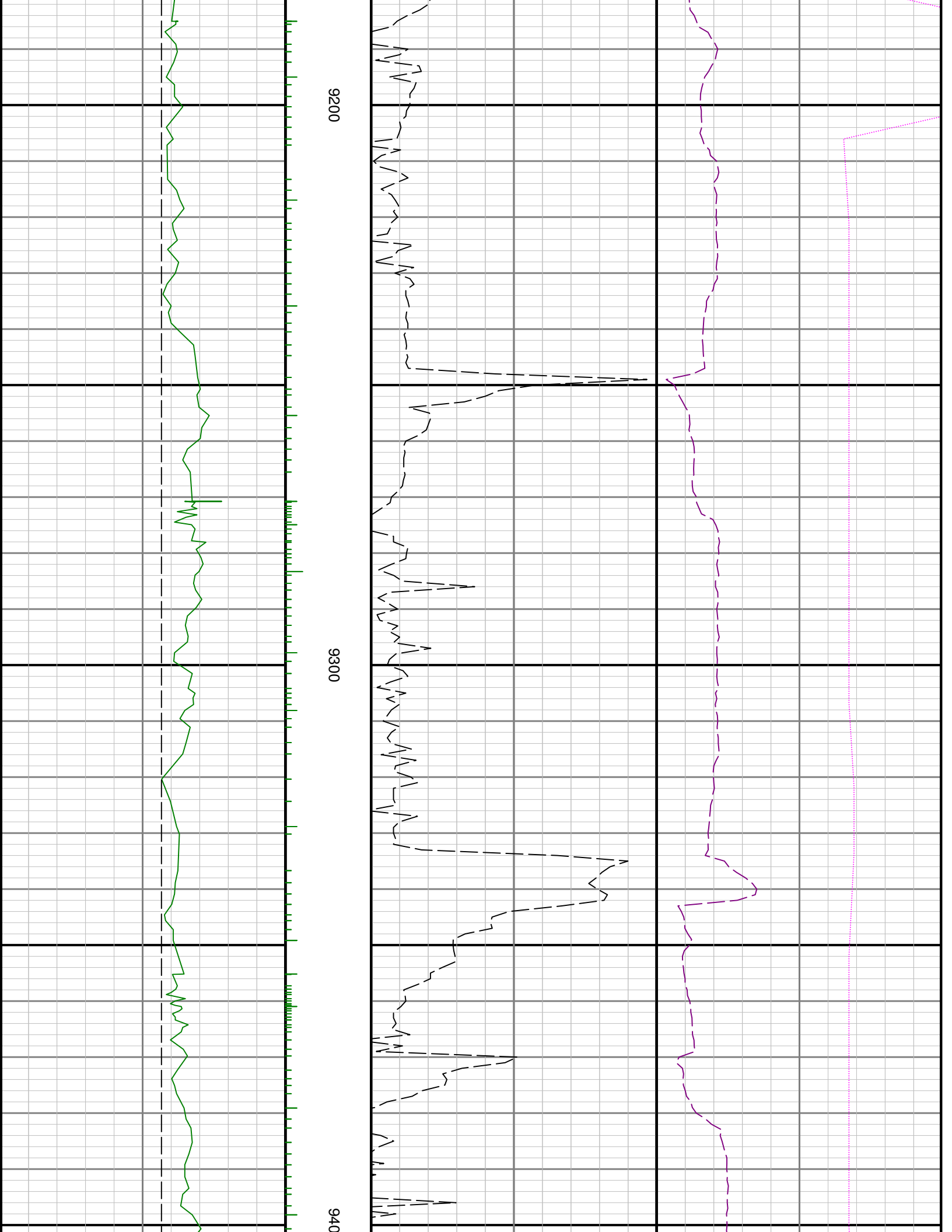


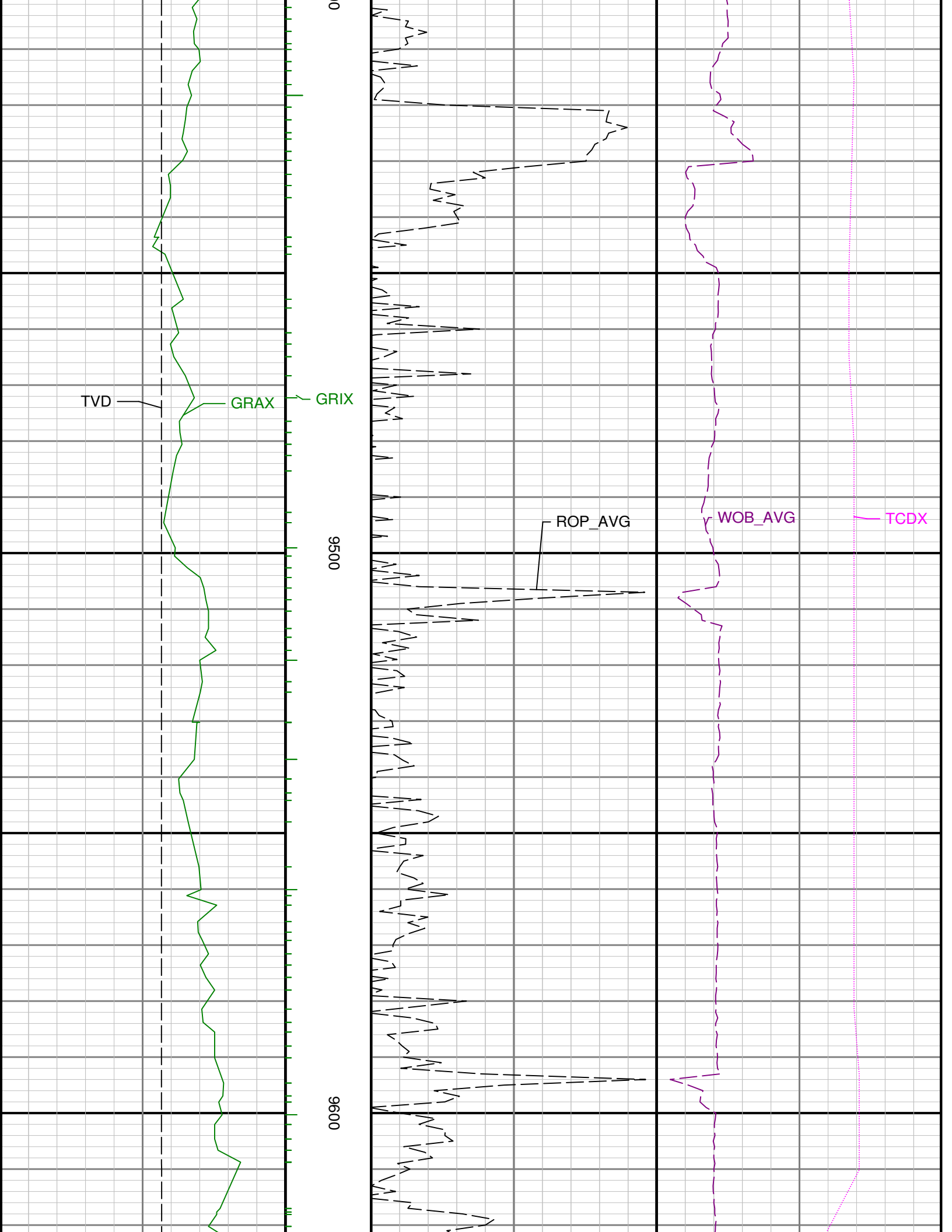


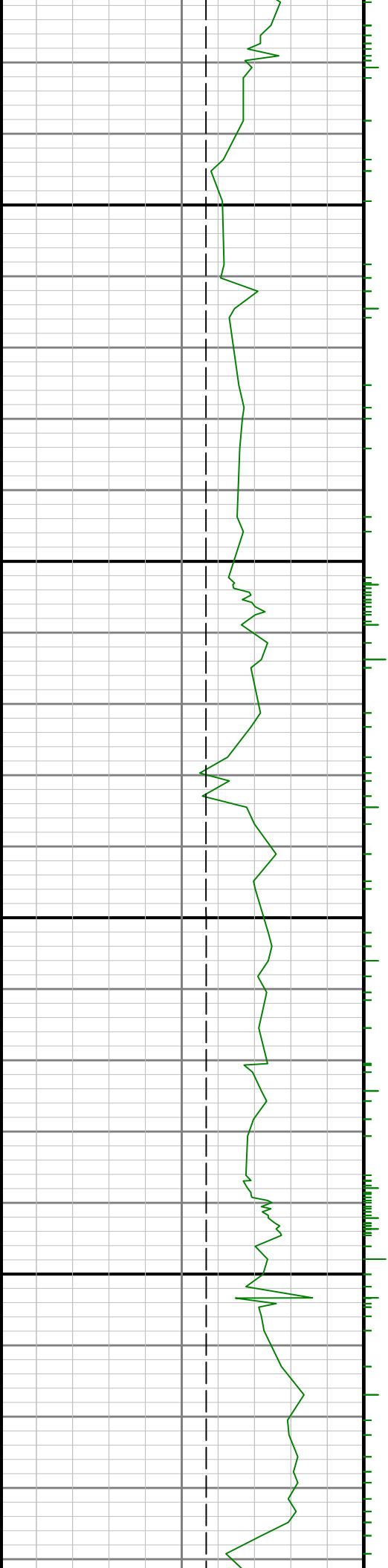
9000

9100



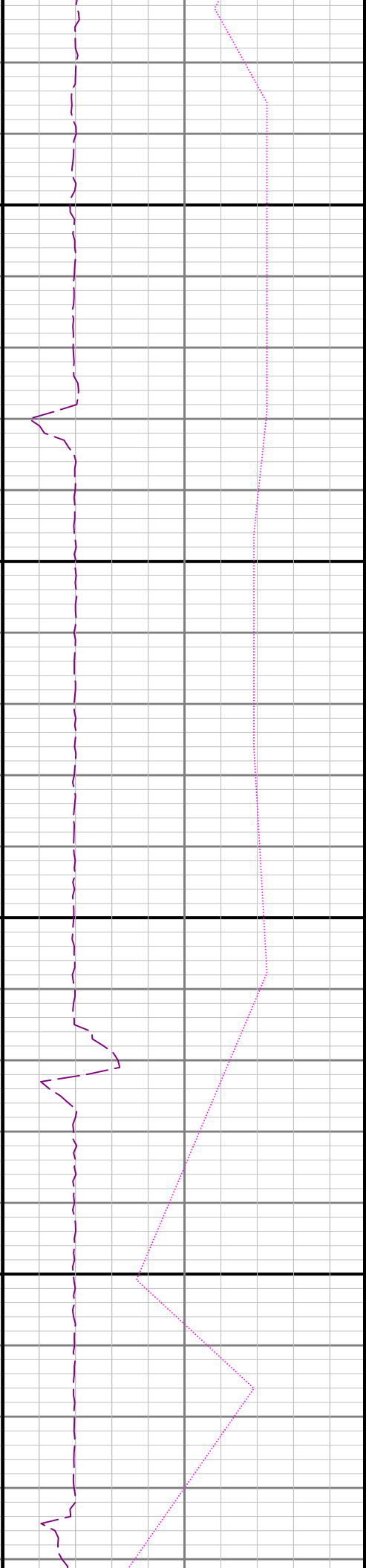
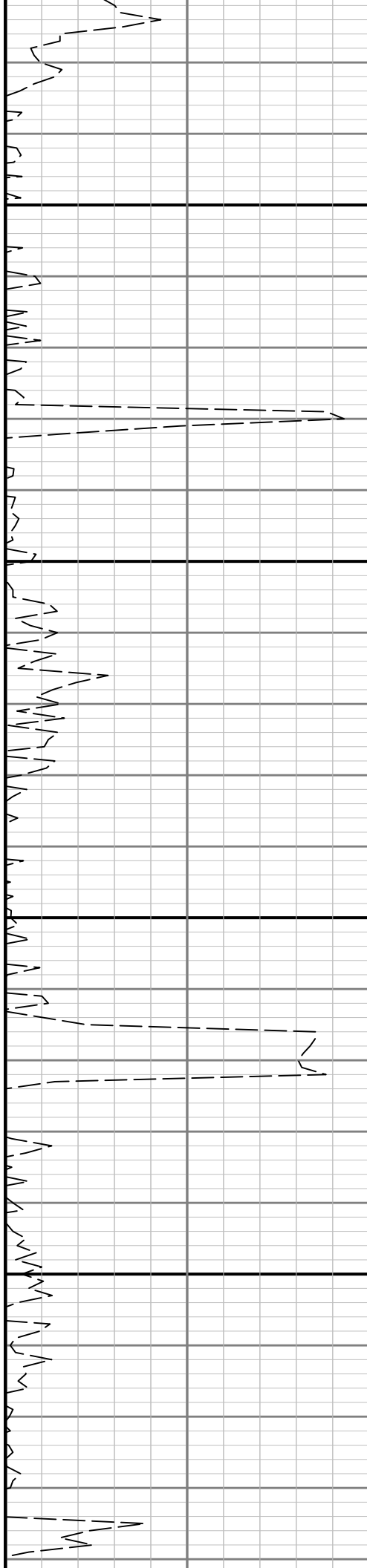


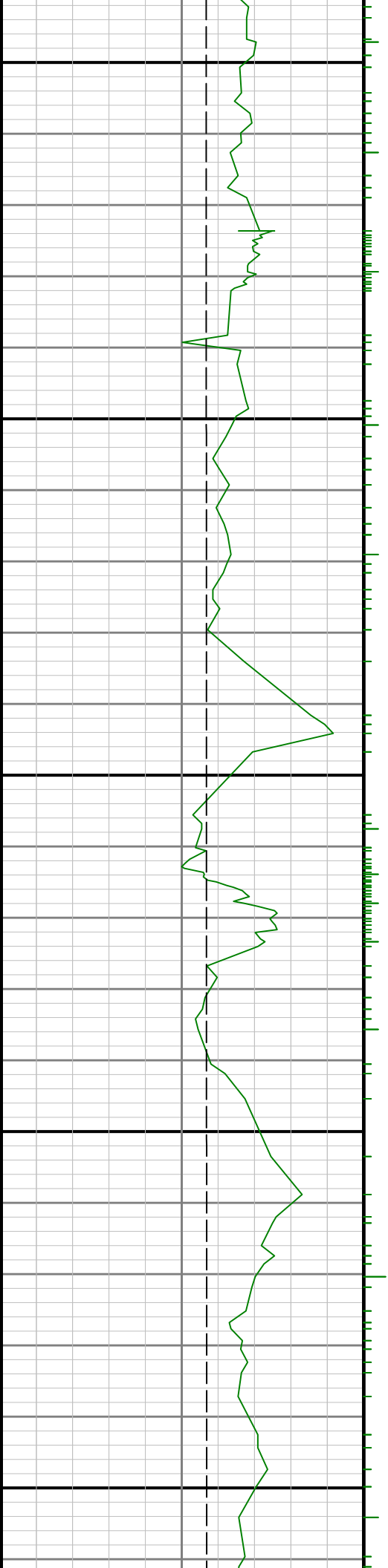




9700

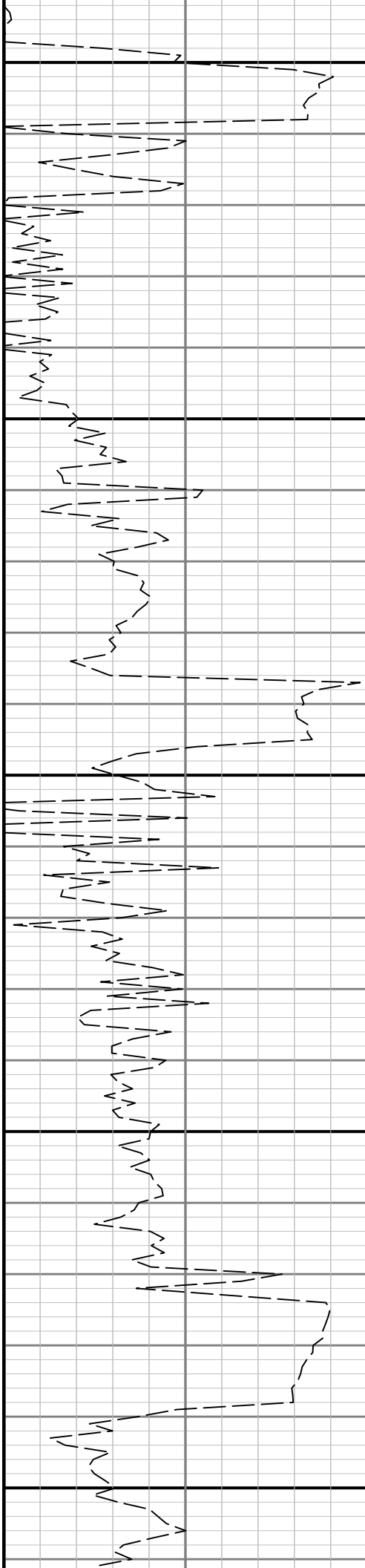
0086

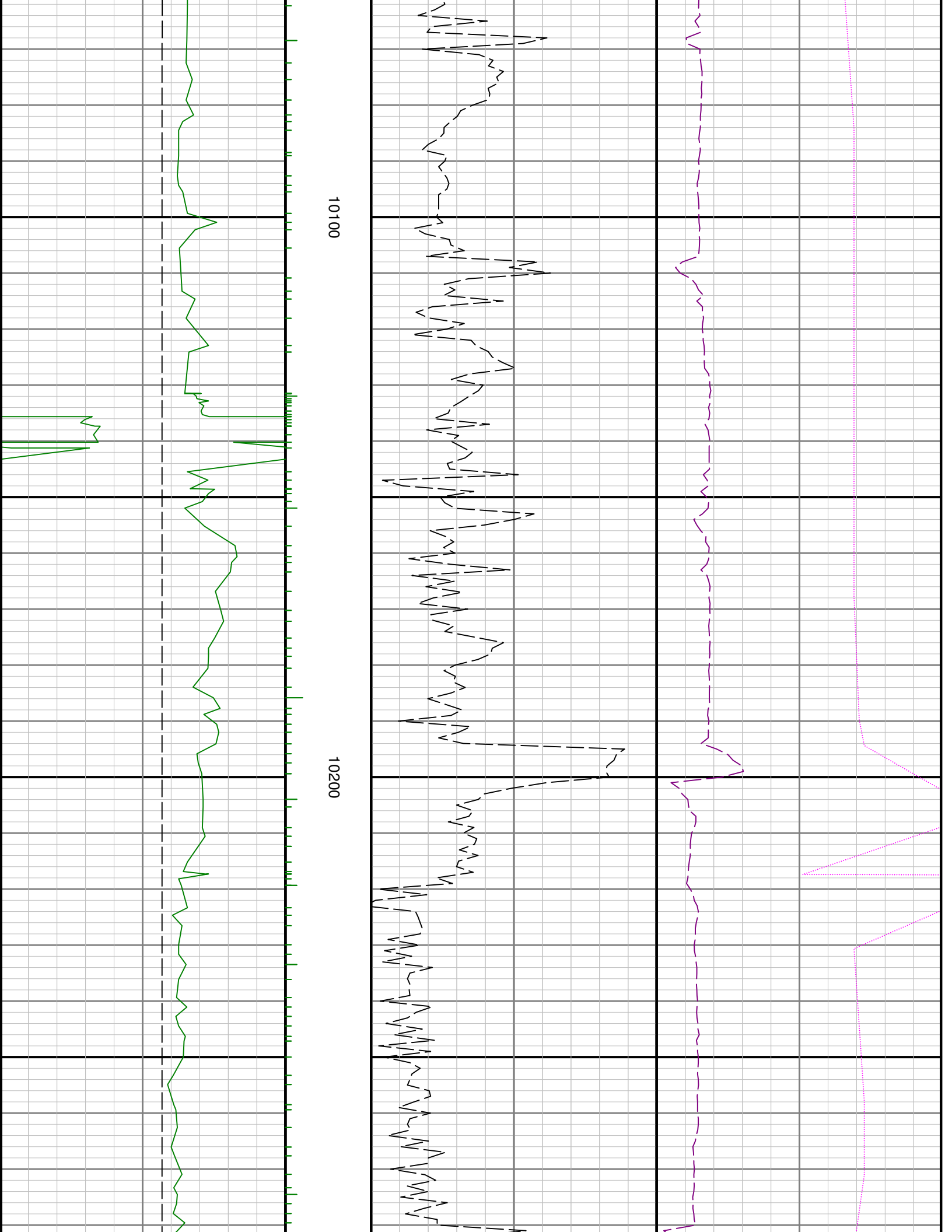


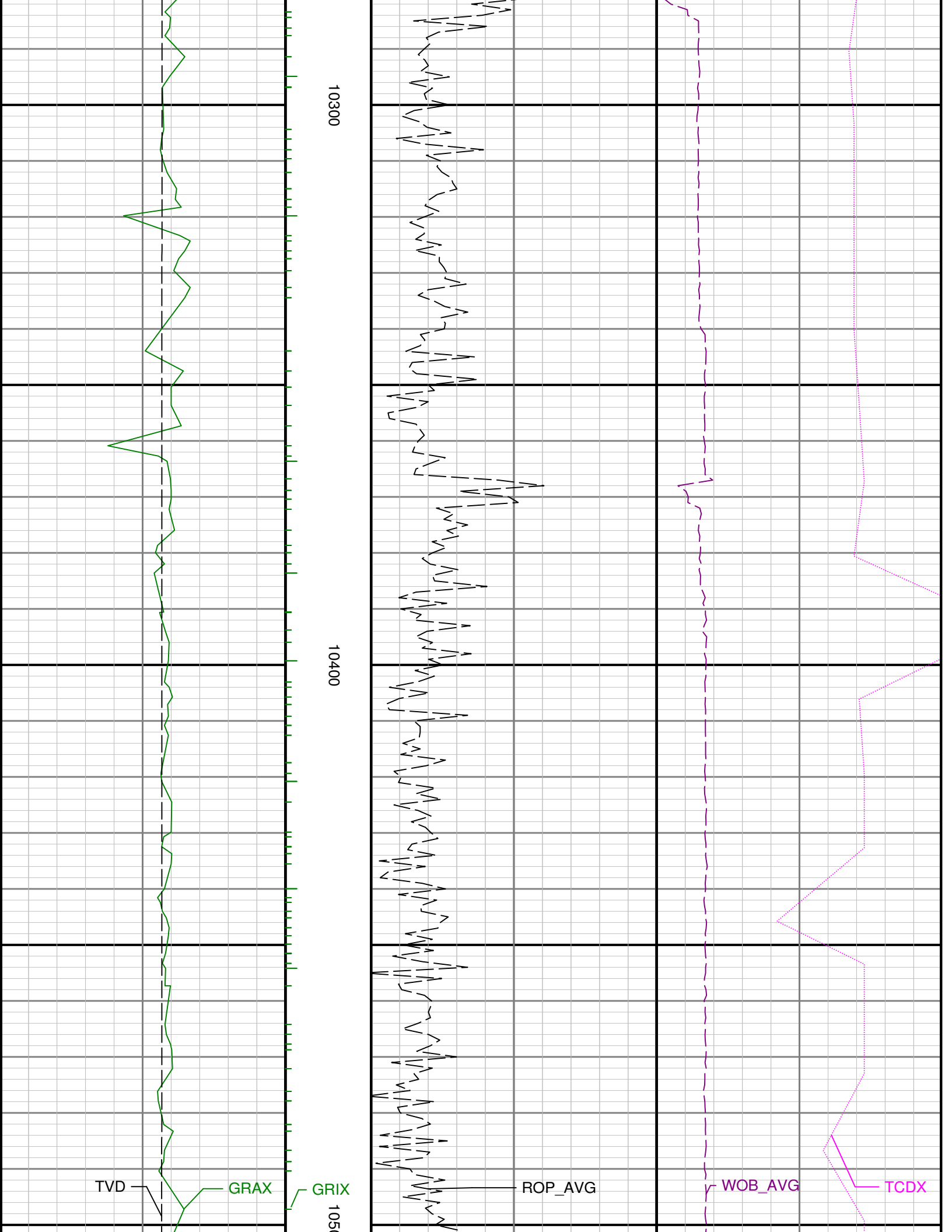


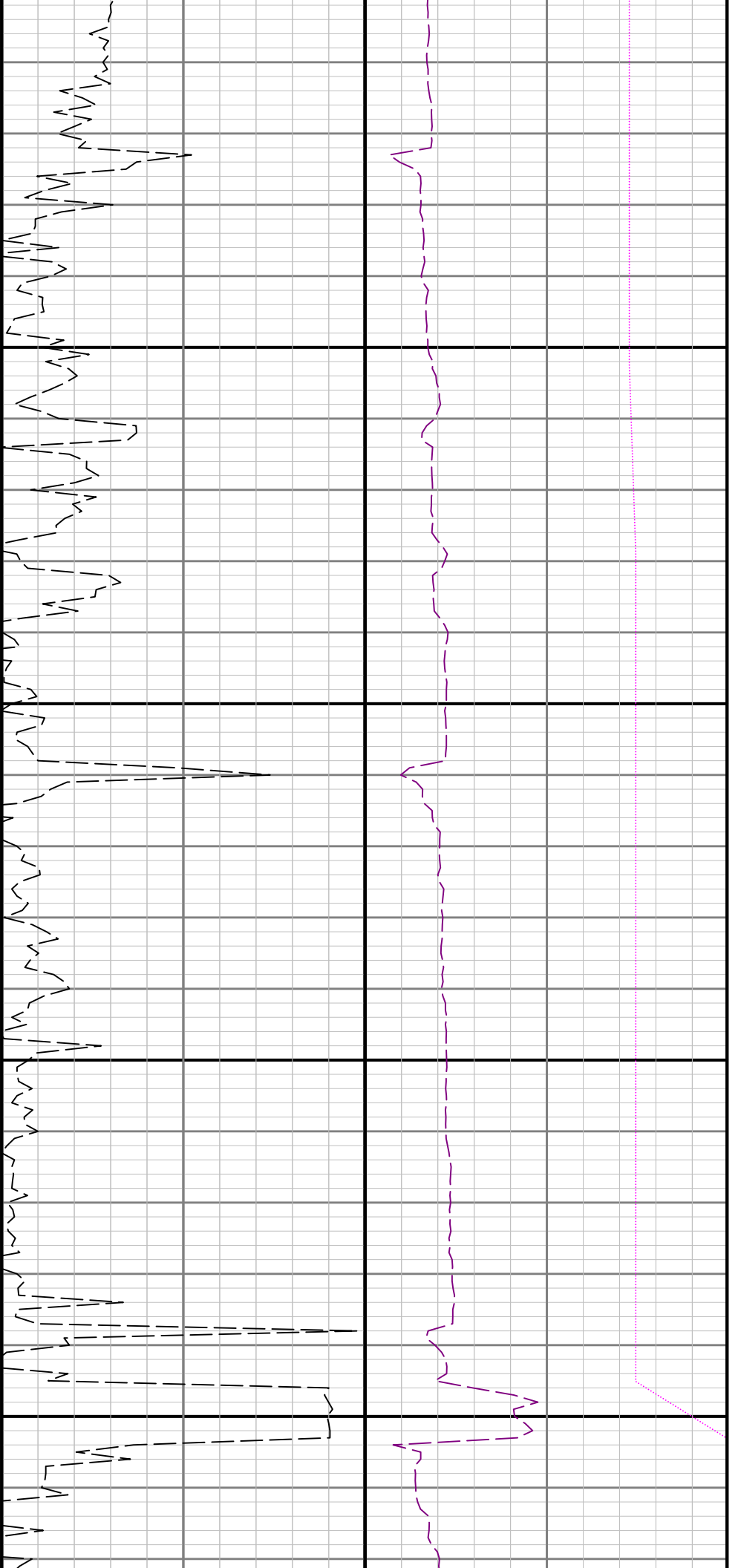
9900

10000





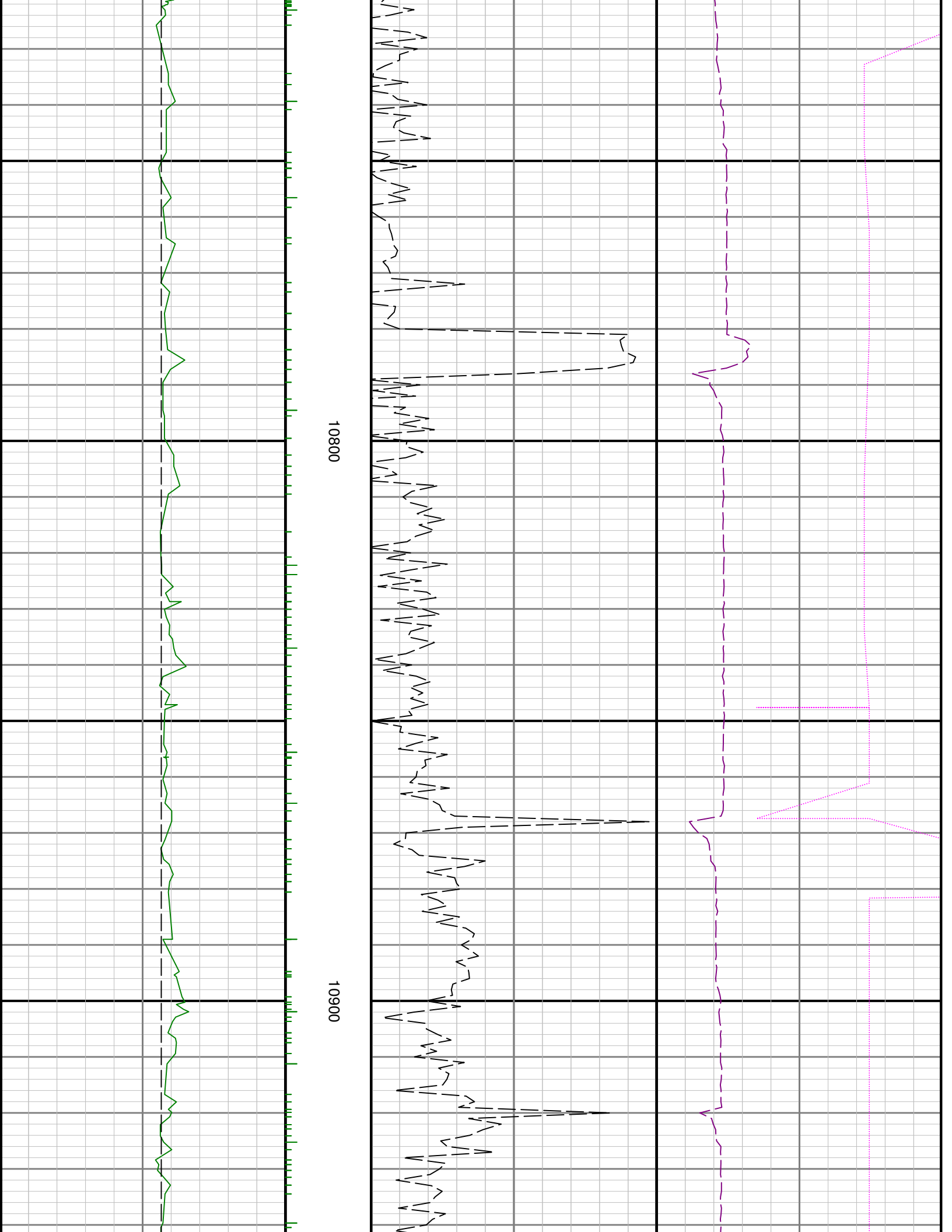


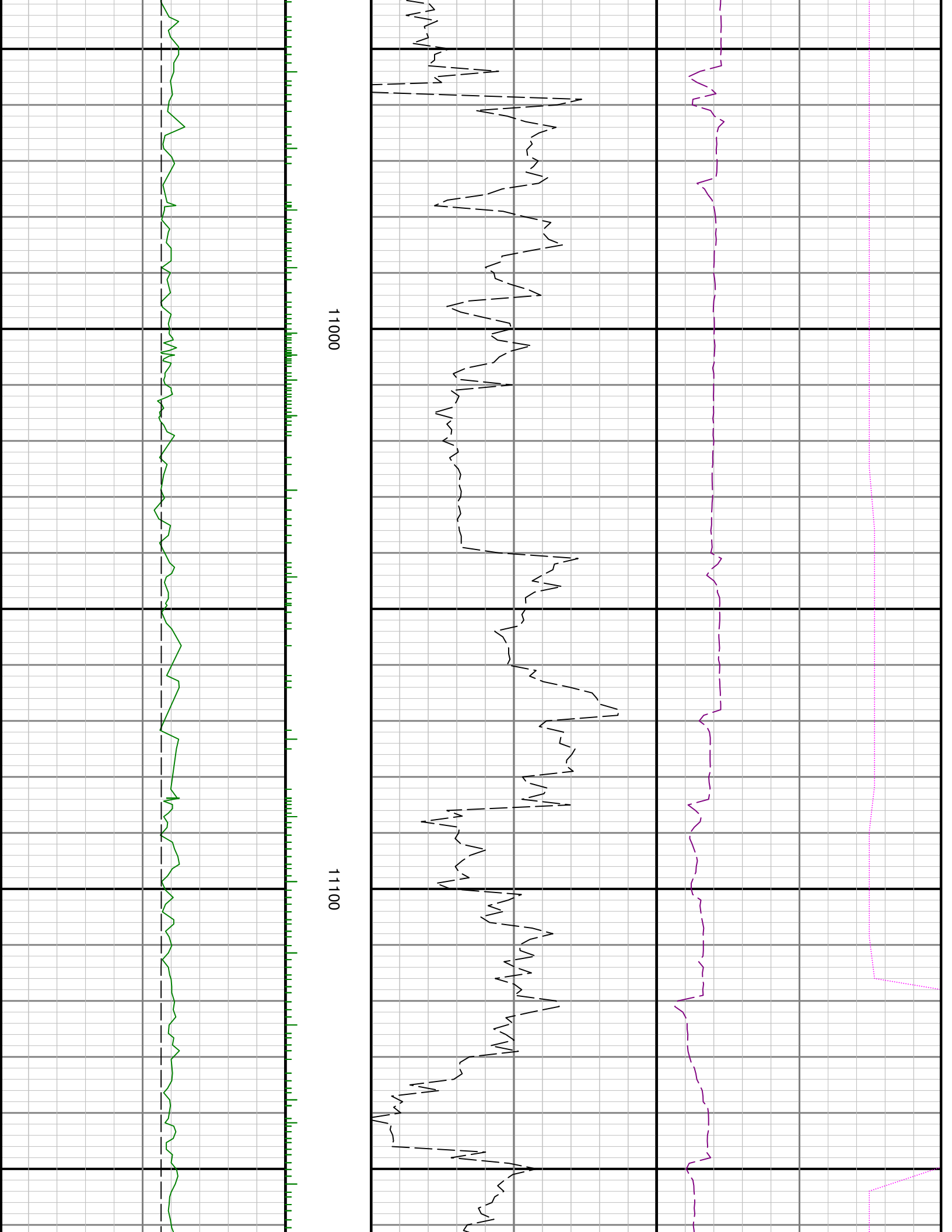


00

10600

10700

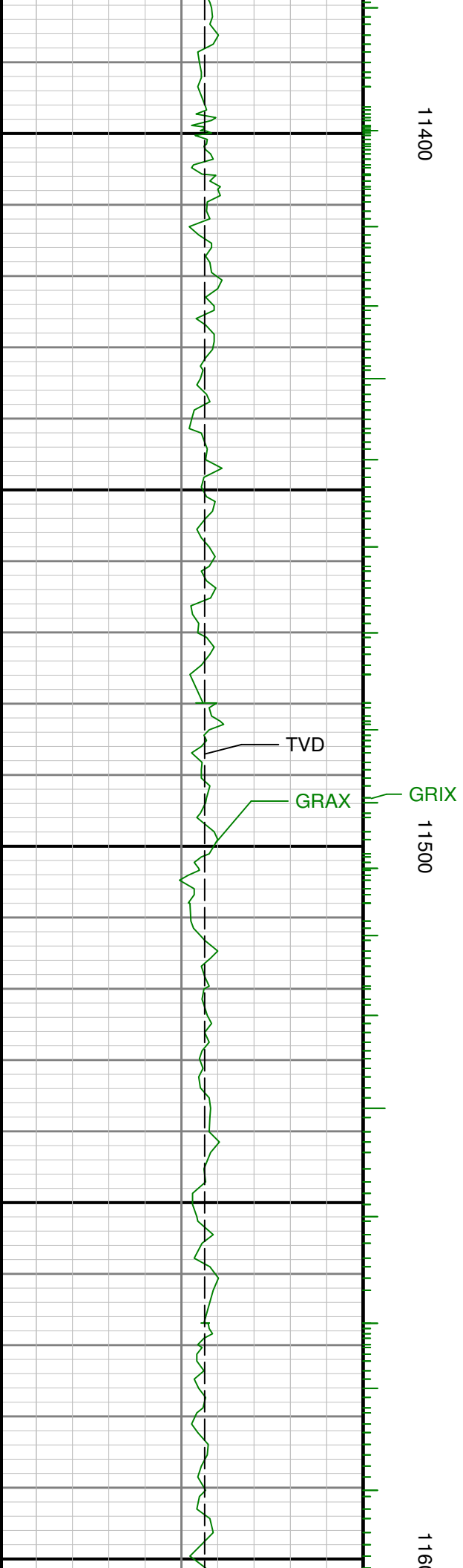
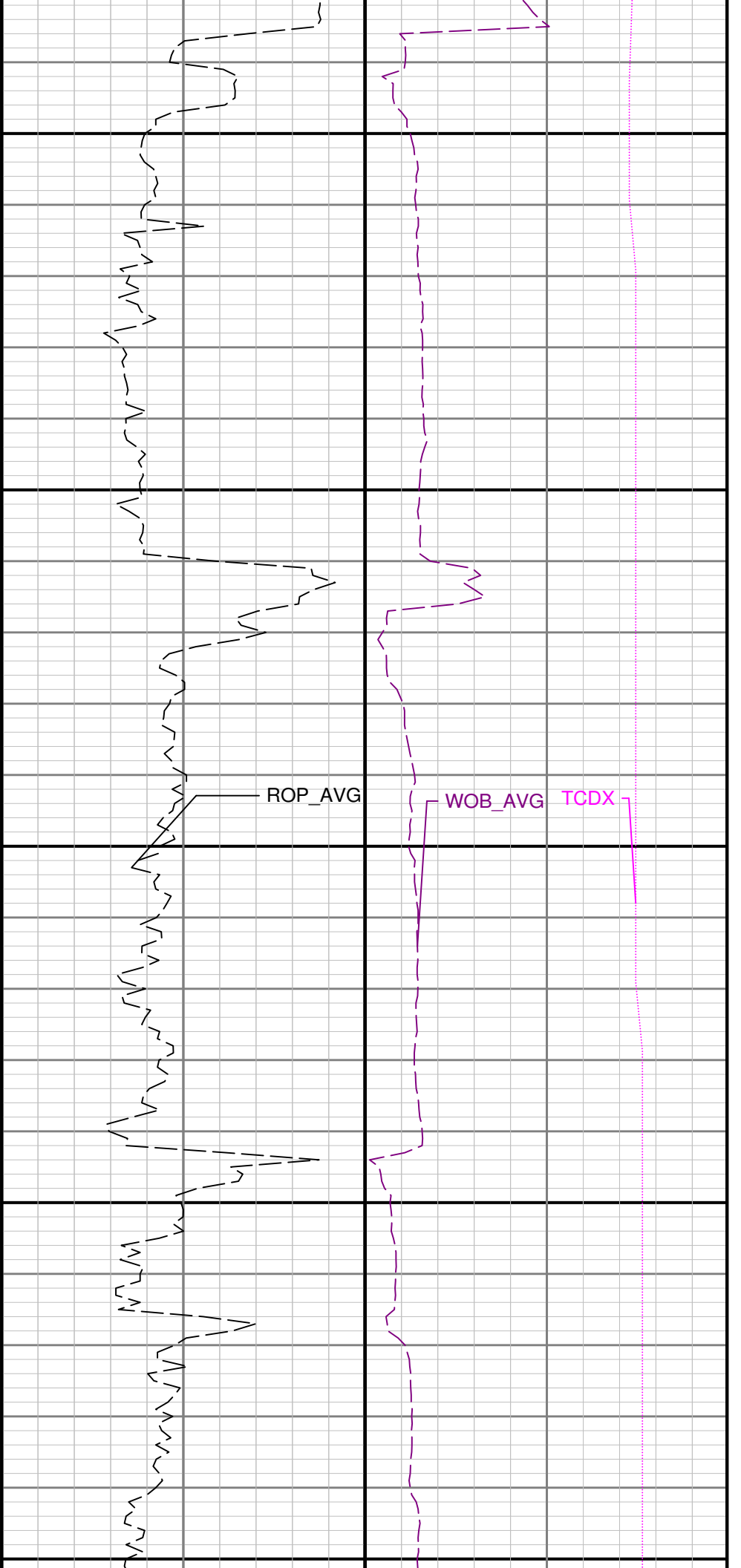


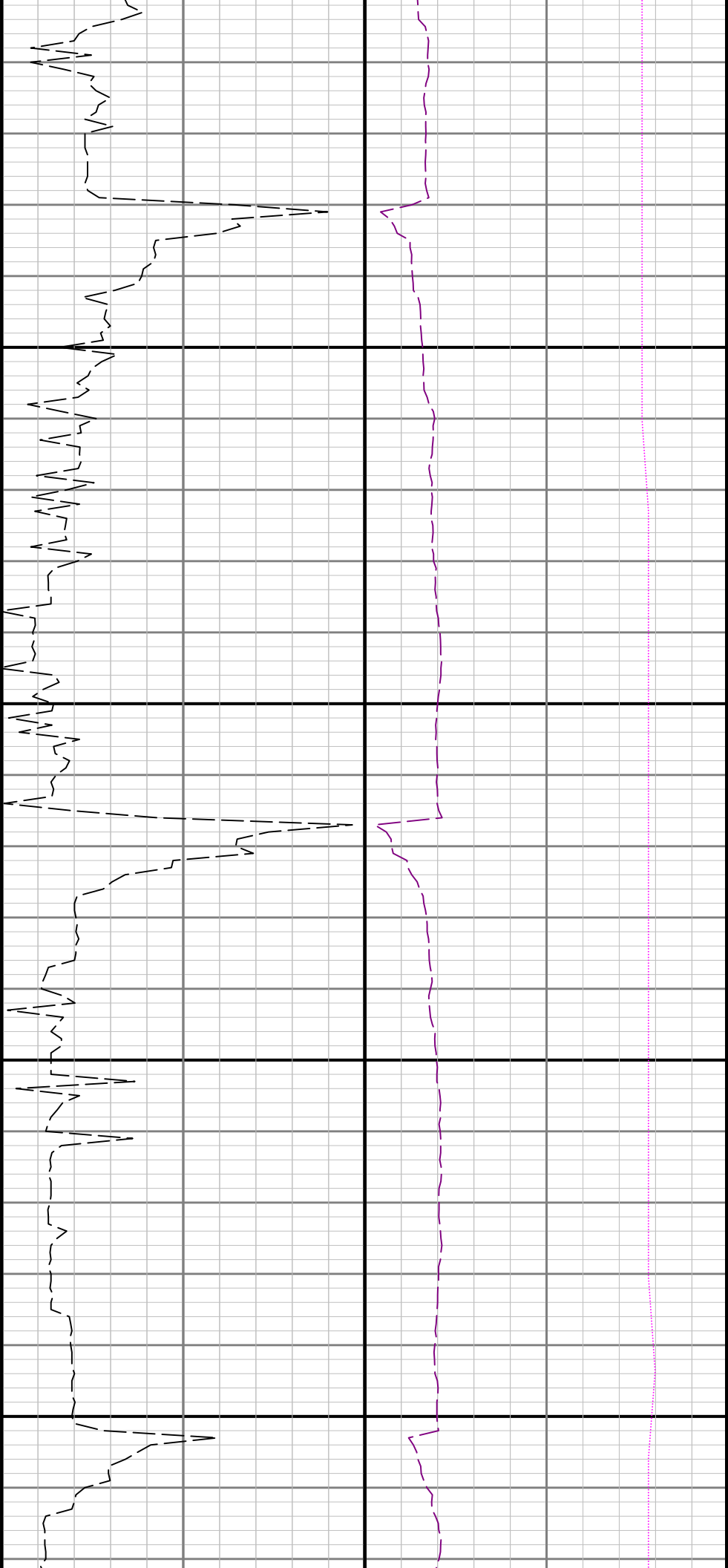




11200

11300

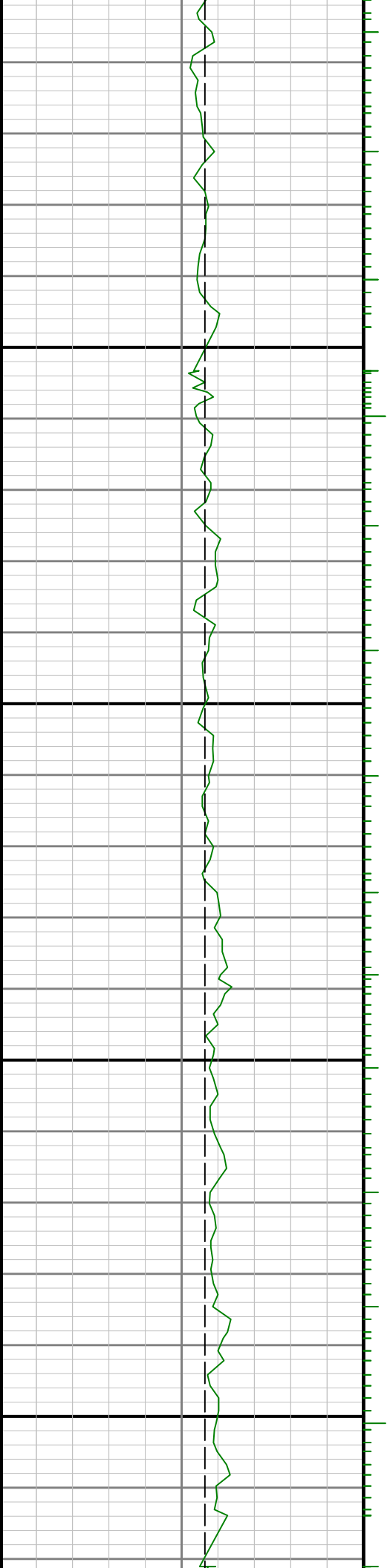


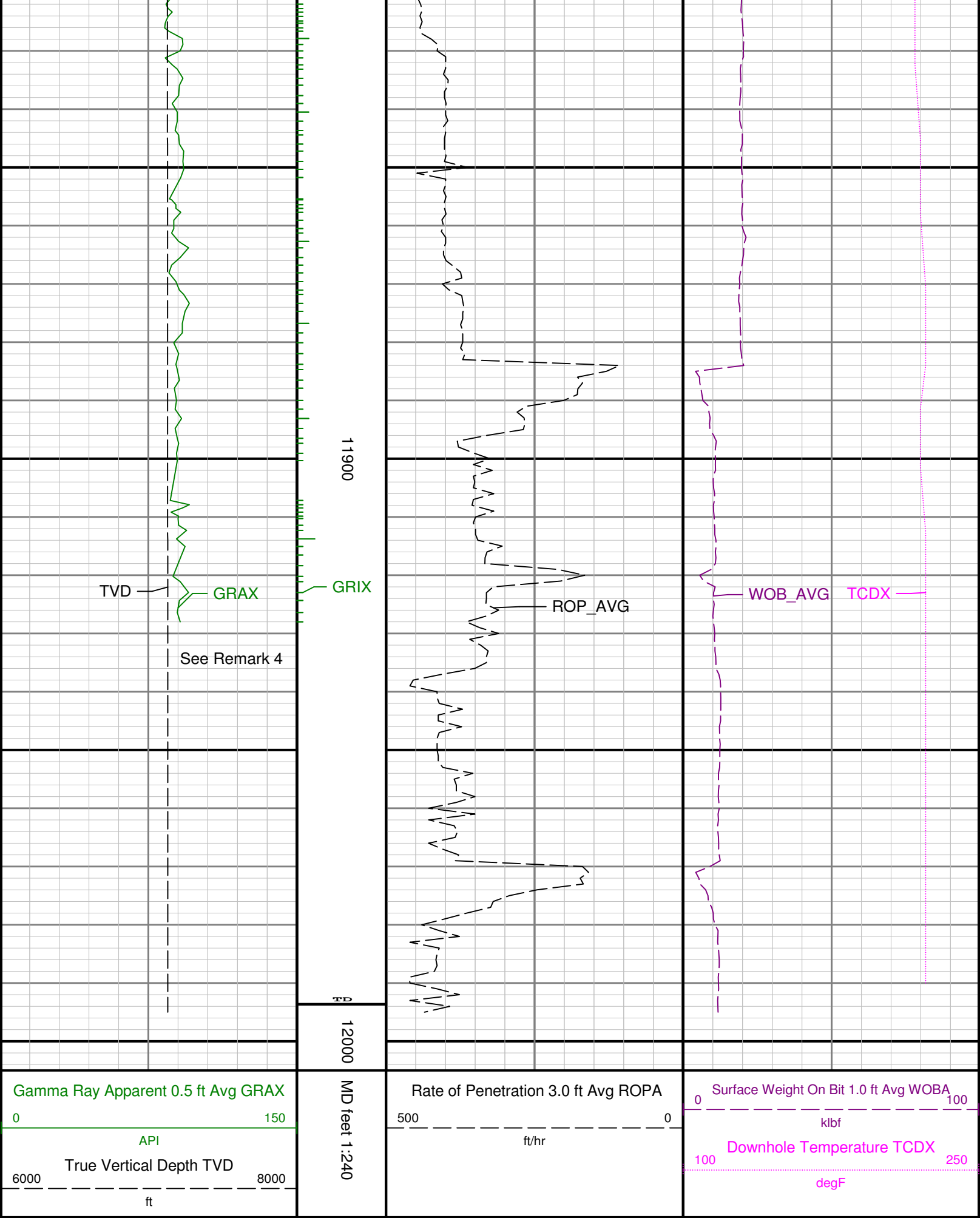


00

11700

11800





TVD

GRAX

GRIX

See Remark 4

ROP_AVG

WOB_AVG

TCDX

11900

12000

MD feet 1:240

Rate of Penetration 3.0 ft Avg ROPA

Surface Weight On Bit 1.0 ft Avg WOB

Downhole Temperature TCDX

True Vertical Depth TVD