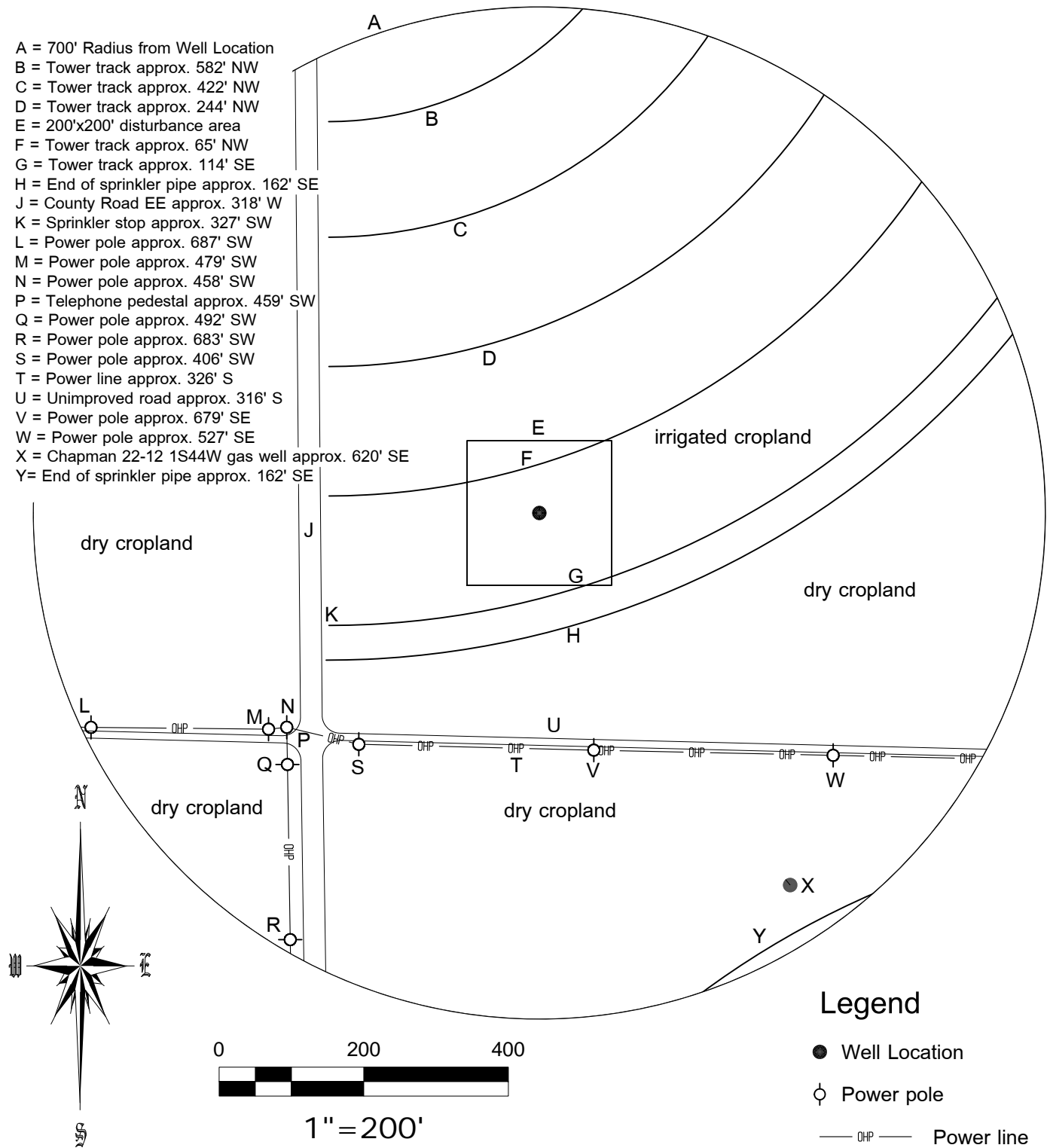


# DIAGRAM OF VISIBLE IMPROVEMENTS

## Allison 12-22

A = 700' Radius from Well Location  
 B = Tower track approx. 582' NW  
 C = Tower track approx. 422' NW  
 D = Tower track approx. 244' NW  
 E = 200'x200' disturbance area  
 F = Tower track approx. 65' NW  
 G = Tower track approx. 114' SE  
 H = End of sprinkler pipe approx. 162' SE  
 J = County Road EE approx. 318' W  
 K = Sprinkler stop approx. 327' SW  
 L = Power pole approx. 687' SW  
 M = Power pole approx. 479' SW  
 N = Power pole approx. 458' SW  
 P = Telephone pedestal approx. 459' SW  
 Q = Power pole approx. 492' SW  
 R = Power pole approx. 683' SW  
 S = Power pole approx. 406' SW  
 T = Power line approx. 326' S  
 U = Unimproved road approx. 316' S  
 V = Power pole approx. 679' SE  
 W = Power pole approx. 527' SE  
 X = Chapman 22-12 1S44W gas well approx. 620' SE  
 Y = End of sprinkler pipe approx. 162' SE



### Legend

- Well Location
- ⊕ Power pole
- OHP — Power line



**FORTY NORTH, LLC**  
**LAND SURVEYING**

53575 County Road NN  
Wray, CO 80758  
(970) 466-0552  
fortynorthllc@gmail.com

DATE OF FIELD WORK  
7/2/2014

DATE OF DRAWING  
7/3/2014

PROJECT NO.  
1083.014A

Augustus Energy Resources, LLC  
Allison 12-22 1S44W

SW1/4 NW1/4 SEC. 22, T1S, R44W, 6PM, Yuma County, Colo.