

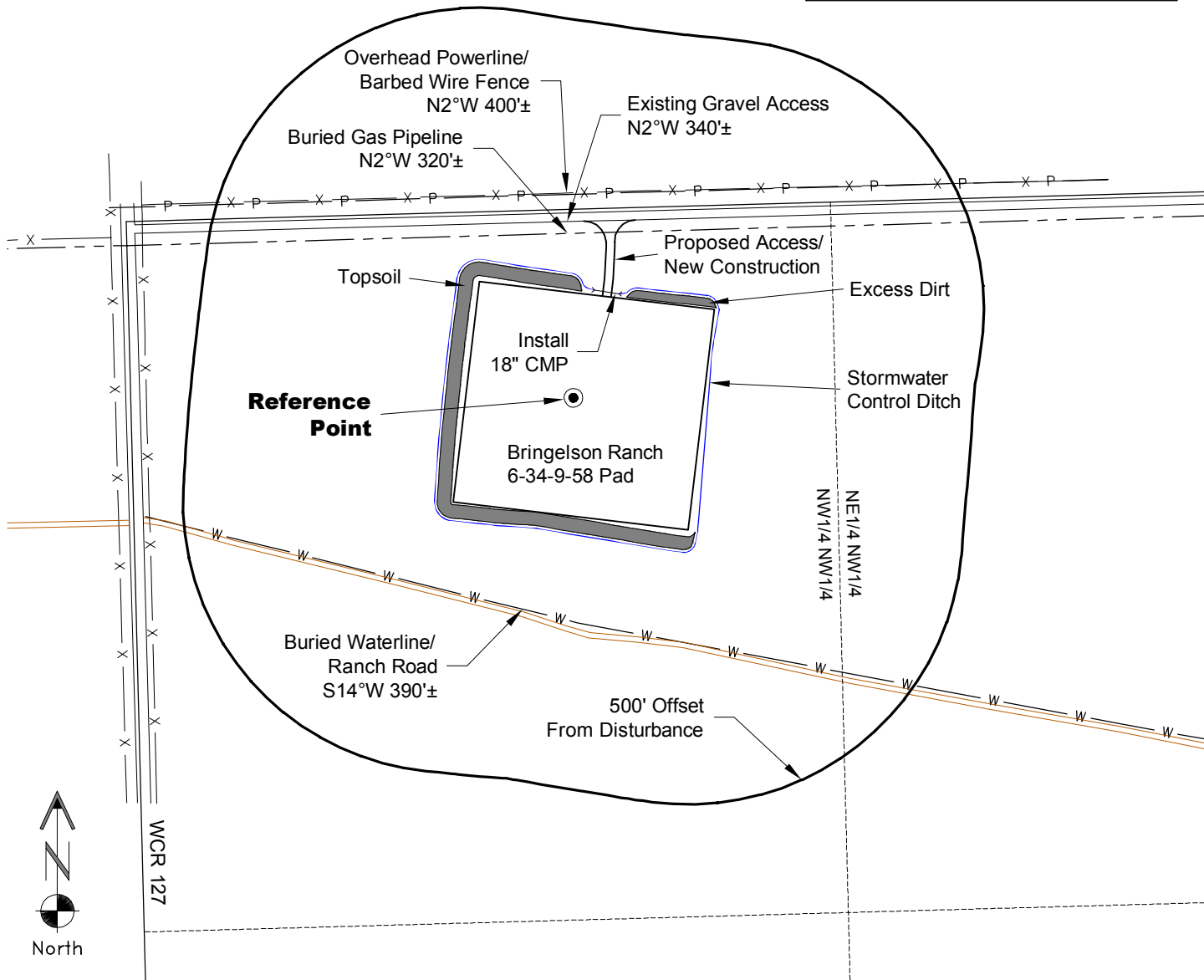
# LOCATION DRAWING

VEGETATION:  
DRY LAND PASTURE

SURFACE USE:  
GRAZING

## REFERENCE POINT

LATITUDE: 40.71393
LONGITUDE: -103.85632
FOOTAGE: 352 FNL 827 FWL
GROUND ELEVATION: 4804.9'
PDOP: 1.7 DATE: 6/24/2013
INSTRUMENT OPERATOR: MARC WOODARD

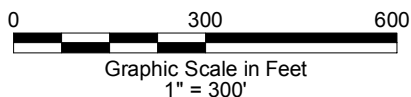


NOTE-DISTANCE TO NEAREST:  
Property Line - N 352'  
Public Road - WCR 127 - W 810'±  
Building - House S85°W 1,440'±  
Railroad - S88°E 32.3 Miles  
Powerline - N2°W 380'±

DISTURBANCE ACREAGE:  
6.3± DRILLING OPERATIONS

NOTE:  
ALL PRODUCTION FACILITIES WILL BE ON PAD.

9/9/13



**CARRIZO NIOBRARA LLC**  
**BRINGELSON RANCH 6-34-9-58 PAD**

**NW1/4 NW1/4 SEC. 34 T9N R58W**  
**6th PM WELD COUNTY COLORADO**