

T10N, R58W, 6th P.M.

WHITING OIL & GAS CORP.

Target Bottom Hole

Well location, RAZOR #25B-2412 (SURFACE LOCATION), located as shown in the NW 1/4 NE 1/4 of Section 25, T10N, R58W, 6th P.M., Weld County, Colorado.

2010 UELS Alum.
Cap, 0.3' High,
N/E Fence
Lat: 40.816975"
Long: 103.822819"

2012 UELS Alum.
Cap, 0.4' High,
Lat: 40.817031"
Long: 103.813158"

1917 BLM Brass
Cap, 1.0' High
Lat: 40.817086"
Long: 103.803497"
N89°33'18"E

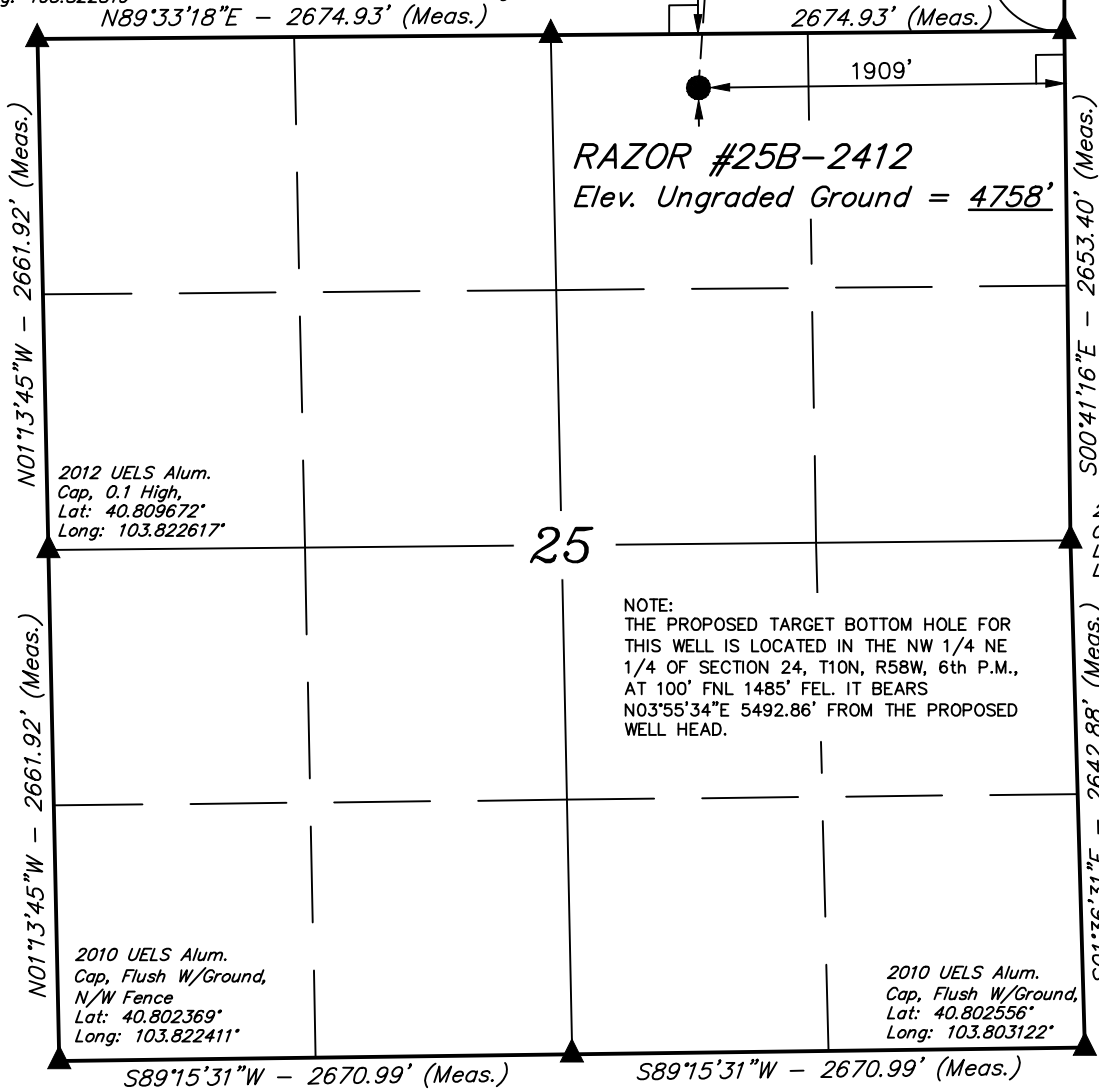
R R
58 57
W W

BASIS OF ELEVATION

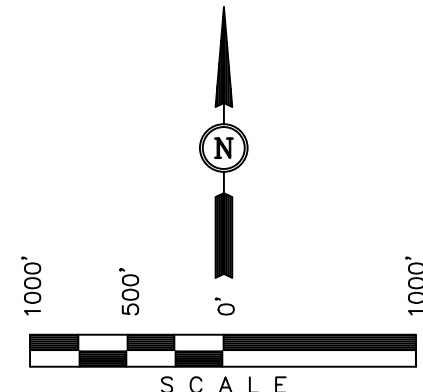
SPOT ELEVATION LOCATED AT THE NORTHEAST CORNER OF SECTION 15, T9N, R58W, 6th P.M. TAKEN FROM THE GATEHOOK SPRING, QUADRANGLE, COLORADO, WELD COUNTY, 7.5 MINUTE QUAD (TOPOGRAPHIC MAP) PUBLISHED BY THE UNITED STATES DEPARTMENT OF THE INTERIOR, GEOLOGICAL SURVEY. SAID ELEVATION IS MARKED AS BEING 4679 FEET.

BASIS OF BEARINGS

BASIS OF BEARINGS IS A G.P.S. OBSERVATION.



NOTE:
THE PROPOSED TARGET BOTTOM HOLE FOR THIS WELL IS LOCATED IN THE NW 1/4 NE 1/4 OF SECTION 24, T10N, R58W, 6th P.M., AT 100' FNL 1485' FEL. IT BEARS N03°55'34"E 5492.86' FROM THE PROPOSED WELL HEAD.



CERTIFICATION
 THIS IS TO CERTIFY THAT THE ABOVE PLAT WAS PREPARED FROM FIELD NOTES OF ACTUAL SURVEYS MADE BY ME OR UNDER MY SUPERVISION AND THAT THE SAME ARE TRUE AND CORRECT TO THE BEST OF MY KNOWLEDGE AND BELIEF.
 REGISTERED LAND SURVEYOR
 REGISTRATION NO. 28285
 STATE OF COLORADO
 02-06-14

UINTAH ENGINEERING & LAND SURVEYING
 85 SOUTH 200 EAST - VERNAL, UTAH 84078
 (435) 789-1017

- LEGEND:**
- = 90° SYMBOL
 - = PROPOSED WELL HEAD.
 - ▲ = SECTION CORNERS LOCATED.

2012 UELS Alum.
Cap, 0.2' High,
Lat: 40.802461"
Long: 103.812767"

PDOP = 1.0

NAD 83 (SURFACE LOCATION)	
LATITUDE = 40°48'58.60" (40.816278)	
LONGITUDE = 103°48'37.37" (103.810381)	
NAD 27 (SURFACE LOCATION)	
LATITUDE = 40°48'58.65" (40.816292)	
LONGITUDE = 103°48'35.57" (103.809881)	

SCALE 1" = 1000'	DATE SURVEYED: 01-09-14	DATE DRAWN: 01-22-14
PARTY DALLAS NIELSEN G.W. H.K.W.	REFERENCES G.L.O. PLAT	
WEATHER COLD	FILE WHITING OIL & GAS CORP.	

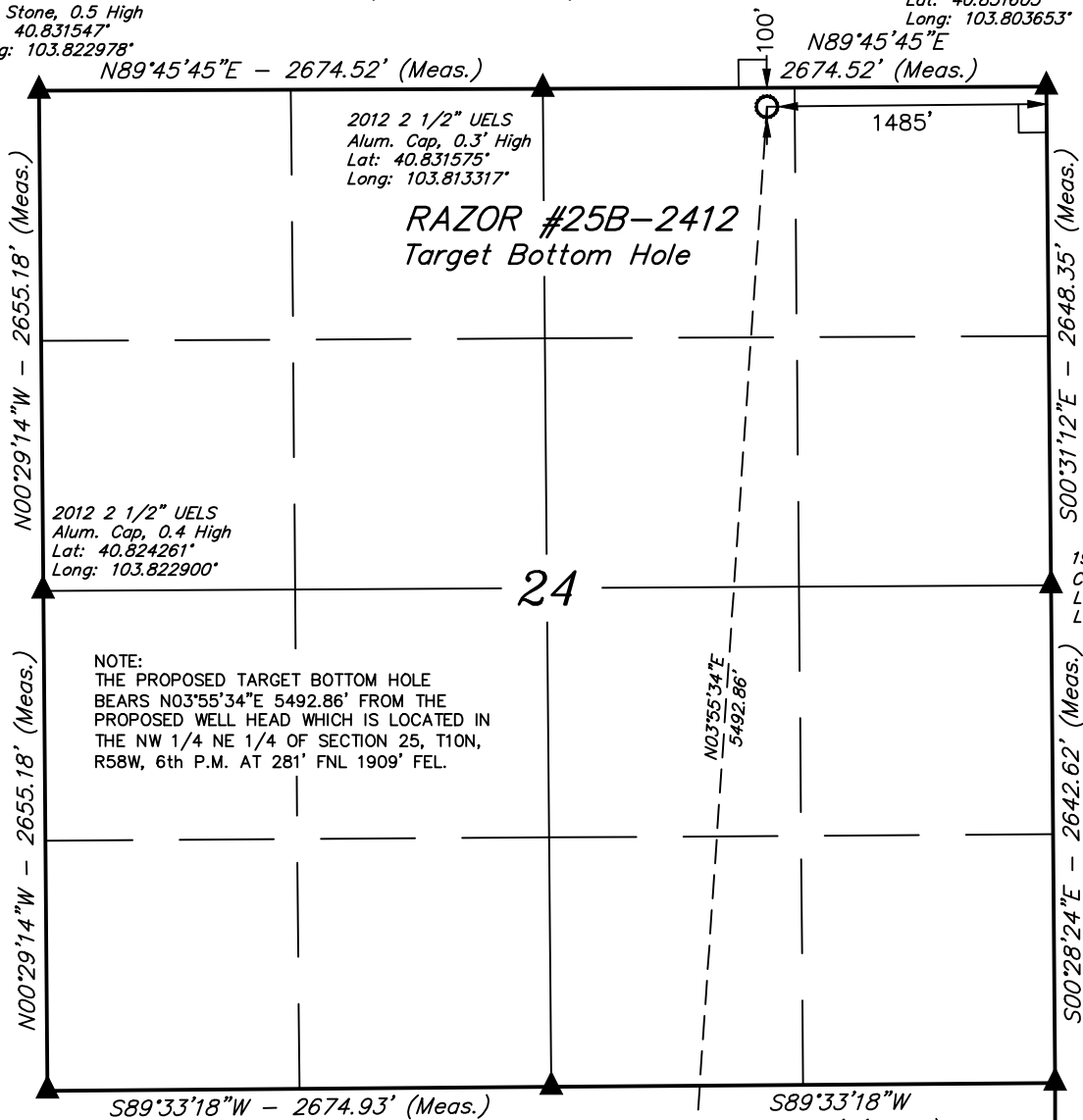
T10N, R58W, 6th P.M.

2011 2 1/2" UELS Alum.
Cap, 0.6' Below Ground
Lat: 40.831603°
Long: 103.803653°

WHITING OIL & GAS CORP.

Set Stone, 0.5 High
Lat: 40.831547°
Long: 103.822978°

Well location, RAZOR #25B-2412 (TARGET BOTTOM HOLE), located as shown in the NW 1/4 NE 1/4 of Section 24, T10N, R58W, 6th P.M., Weld County, Colorado.

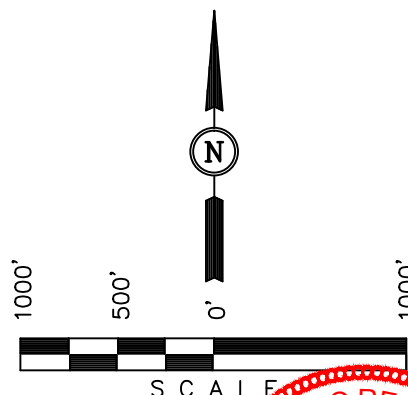


BASIS OF ELEVATION

SPOT ELEVATION LOCATED AT THE NORTHEAST CORNER OF SECTION 15, T9N, R58W, 6th P.M. TAKEN FROM THE GATEHOOK SPRING, QUADRANGLE, COLORADO, WELD COUNTY, 7.5 MINUTE QUAD (TOPOGRAPHIC MAP) PUBLISHED BY THE UNITED STATES DEPARTMENT OF THE INTERIOR, GEOLOGICAL SURVEY. SAID ELEVATION IS MARKED AS BEING 4679 FEET.

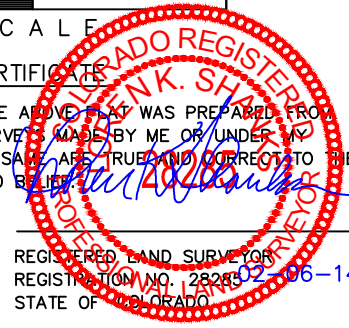
BASIS OF BEARINGS

BASIS OF BEARINGS IS A G.P.S. OBSERVATION.



CERTIFICATE

THIS IS TO CERTIFY THAT THE ABOVE PLAT WAS PREPARED FROM FIELD NOTES OF ACTUAL SURVEY MADE BY ME OR UNDER MY SUPERVISION AND THAT THE SAME ARE TRUE AND CORRECT TO THE BEST OF MY KNOWLEDGE AND BELIEF.



REGISTERED LAND SURVEYOR
REGISTRATION NO. 28285-06-14
STATE OF COLORADO

UINTAH ENGINEERING & LAND SURVEYING
85 SOUTH 200 EAST - VERNAL, UTAH 84078
(435) 789-1017

LEGEND:

- └─┘ = 90° SYMBOL
- = PROPOSED WELL HEAD.
- ▲ = SECTION CORNERS LOCATED.

NAD 83 (TARGET BOTTOM HOLE)	
LATITUDE = 40°49'52.73" (40.831314)	
LONGITUDE = 103°48'32.46" (103.809017)	
NAD 27 (TARGET BOTTOM HOLE)	
LATITUDE = 40°49'52.78" (40.831328)	
LONGITUDE = 103°48'30.65" (103.808514)	

SCALE 1" = 1000'	DATE SURVEYED: 01-09-14	DATE DRAWN: 01-22-14
PARTY DALLAS NIELSEN G.W. H.K.W.	REFERENCES G.L.O. PLAT	
WEATHER COLD	FILE WHITING OIL & GAS CORP.	