

T10N, R58W, 6th P.M.

WHITING OIL & GAS CORP.

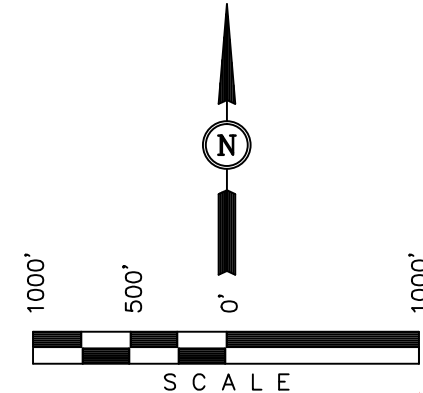
Well location, RAZOR #25B-2409 (SURFACE LOCATION), located as shown in the NW 1/4 NE 1/4 of Section 25, T10N, R58W, 6th P.M., Weld County, Colorado.

BASIS OF ELEVATION

SPOT ELEVATION LOCATED AT THE NORTHEAST CORNER OF SECTION 15, T9N, R58W, 6th P.M. TAKEN FROM THE GATEHOOK SPRING, QUADRANGLE, COLORADO, WELD COUNTY, 7.5 MINUTE QUAD (TOPOGRAPHIC MAP) PUBLISHED BY THE UNITED STATES DEPARTMENT OF THE INTERIOR, GEOLOGICAL SURVEY. SAID ELEVATION IS MARKED AS BEING 4679 FEET.

BASIS OF BEARINGS

BASIS OF BEARINGS IS A G.P.S. OBSERVATION.

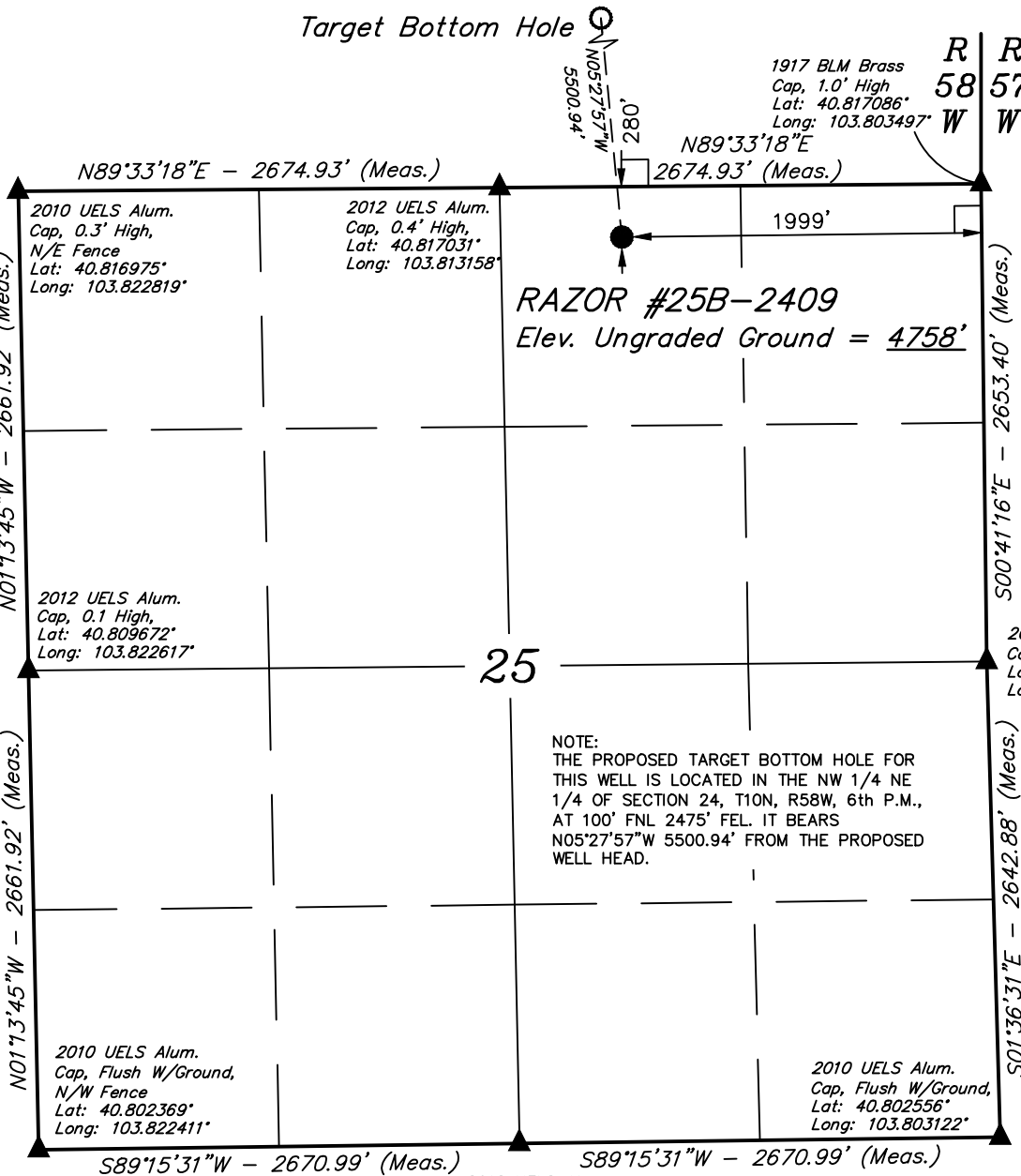


CERTIFICATION

THIS IS TO CERTIFY THAT THE ABOVE PLAT WAS PREPARED FROM FIELD NOTES OF ACTUAL SURVEYS MADE BY ME OR UNDER MY SUPERVISION AND THAT THE SAME ARE TRUE AND CORRECT TO THE BEST OF MY KNOWLEDGE AND BELIEF.

REGISTERED LAND SURVEYOR
REGISTRATION NO. 28285
STATE OF COLORADO 02-06-14

UINTAH ENGINEERING & LAND SURVEYING
85 SOUTH 200 EAST - VERNAL, UTAH 84078
(435) 789-1017



LEGEND:

- └─┘ = 90° SYMBOL
- = PROPOSED WELL HEAD.
- ▲ = SECTION CORNERS LOCATED.

NAD 83 (SURFACE LOCATION)
LATITUDE = 40°48'58.59" (40.816275)
LONGITUDE = 103°48'38.54" (103.810706)
NAD 27 (SURFACE LOCATION)
LATITUDE = 40°48'58.65" (40.816292)
LONGITUDE = 103°48'36.74" (103.810206)

SCALE 1" = 1000'	DATE SURVEYED: 01-09-14	DATE DRAWN: 01-22-14
PARTY DALLAS NIELSEN G.W. H.K.W.	REFERENCES G.L.O. PLAT	
WEATHER COLD	FILE WHITING OIL & GAS CORP.	

T10N, R58W, 6th P.M.

Set Stone, 0.5 High
Lat: 40.831547°
Long: 103.822978°

2011 2 1/2" UELS Alum.
Cap, 0.6' Below Gound
Lat: 40.831603°
Long: 103.803653°

WHITING OIL & GAS CORP.

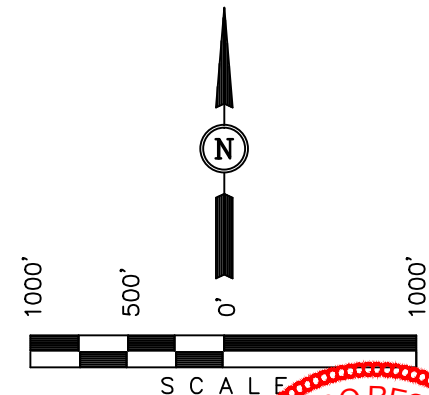
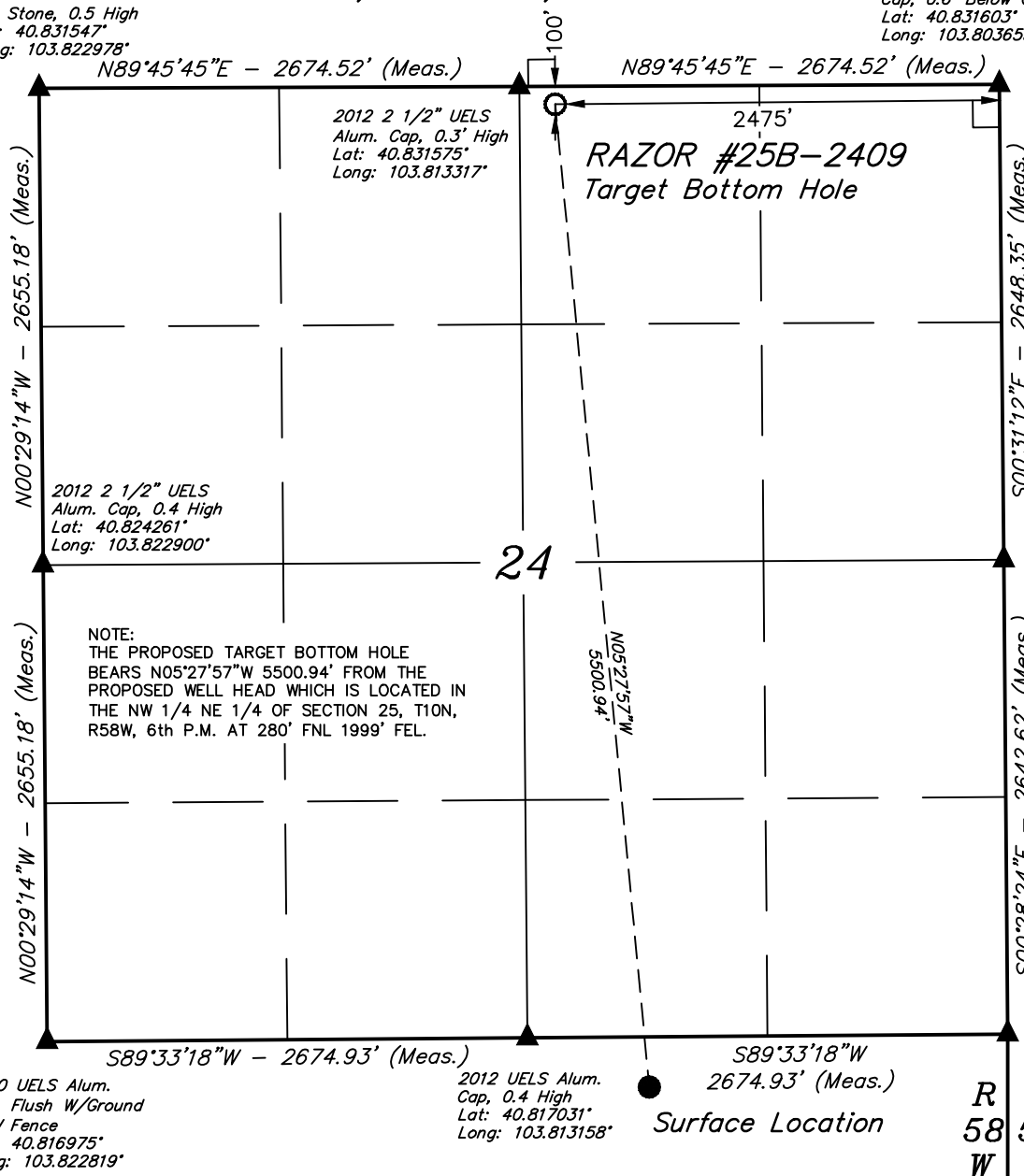
Well location, RAZOR #25B-2409 (TARGET BOTTOM HOLE), located as shown in the NW 1/4 NE 1/4 of Section 24, T10N, R58W, 6th P.M., Weld County, Colorado.

BASIS OF ELEVATION

SPOT ELEVATION LOCATED AT THE NORTHEAST CORNER OF SECTION 15, T9N, R58W, 6th P.M. TAKEN FROM THE GATEHOOK SPRING, QUADRANGLE, COLORADO, WELD COUNTY, 7.5 MINUTE QUAD (TOPOGRAPHIC MAP) PUBLISHED BY THE UNITED STATES DEPARTMENT OF THE INTERIOR, GEOLOGICAL SURVEY. SAID ELEVATION IS MARKED AS BEING 4679 FEET.

BASIS OF BEARINGS

BASIS OF BEARINGS IS A G.P.S. OBSERVATION.



CERTIFICATE

THIS IS TO CERTIFY THAT THE ABOVE PLAT WAS PREPARED FROM FIELD NOTES OF ACTUAL SURVEY MADE BY ME OR UNDER MY SUPERVISION AND THAT THE SAME ARE TRUE AND CORRECT TO THE BEST OF MY KNOWLEDGE AND BELIEF.

REGISTERED LAND SURVEYOR
REGISTRATION NO. 28285-06-14
STATE OF COLORADO

LEGEND:

- └─┘ = 90° SYMBOL
- = PROPOSED WELL HEAD.
- ▲ = SECTION CORNERS LOCATED.

NAD 83 (TARGET BOTTOM HOLE)	
LATITUDE	= 40°49'52.69" (40.831303)
LONGITUDE	= 103°48'45.33" (103.812592)
NAD 27 (TARGET BOTTOM HOLE)	
LATITUDE	= 40°49'52.74" (40.831317)
LONGITUDE	= 103°48'43.53" (103.812092)

UTAH ENGINEERING & LAND SURVEYING 85 SOUTH 200 EAST - VERNAL, UTAH 84078 (435) 789-1017		
SCALE 1" = 1000'	DATE SURVEYED: 01-09-14	DATE DRAWN: 01-22-14
PARTY DALLAS NIELSEN G.W. H.K.W.	REFERENCES G.L.O. PLAT	
WEATHER COLD	FILE	WHITING OIL & GAS CORP.