



**RADIAL CEMENT BOND
GAMMA RAY
CCL**

Company KERR MCGEE OIL AND GAS
Well UPRR 22 PAN AM "F" GU #1
Field WATTENBERG
County WELD State CO

Location: API # : 05-123-07913
NE SW

Other Services

SEC 21 TWP 3N RGE 65W

Permanent Datum GL KB 12 Elevation 5030
Log Measured From KB 12
Drilling Measured From KB

Elevation
K.B. 5042
D.F. 5041
G.L. 5030

Date 06-10-2014

Run Number ONE
Depth Driller 8030
Depth Logger 5900
Bottom Logged Interval 5900
Top Log Interval 3400
Open Hole Size 7.875
Type Fluid WATER
Density / Viscosity 1.0
Max. Recorded Temp. 174
Estimated Cement Top 182
Time Well Ready N/A
Time Logger on Bottom N/A
Equipment Number 4310
Location GREELEY
Recorded By J.J.BULLARD
Witnessed By J.CHANDLER

Borehole Record
Run Number Bit From To Size Weight From To
ONE 12.25 0 207
TWO 7.875 207 8030

Tubing Record
Casing Record Size Wgt/Ft Top Bottom
Surface String 8.63 24# SURFACE 207
Prot. String
Production String 4.5 11.6# SURFACE T.D.
Liner

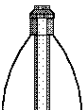
<<< Fold Here >>>

All interpretations are opinions based on inferences from electrical or other measurements and we cannot and do not guarantee the accuracy or correctness of any interpretation, and we shall not, except in the case of gross or willful negligence on our part, be liable or responsible for any loss, costs, damages, or expenses incurred or sustained by anyone resulting from any interpretation made by any of our officers, agents or employees. These interpretations are also subject to our general terms and conditions set out in our current Price Schedule.

Comments

RAN CBL TO VERIFY CEMENT BOND

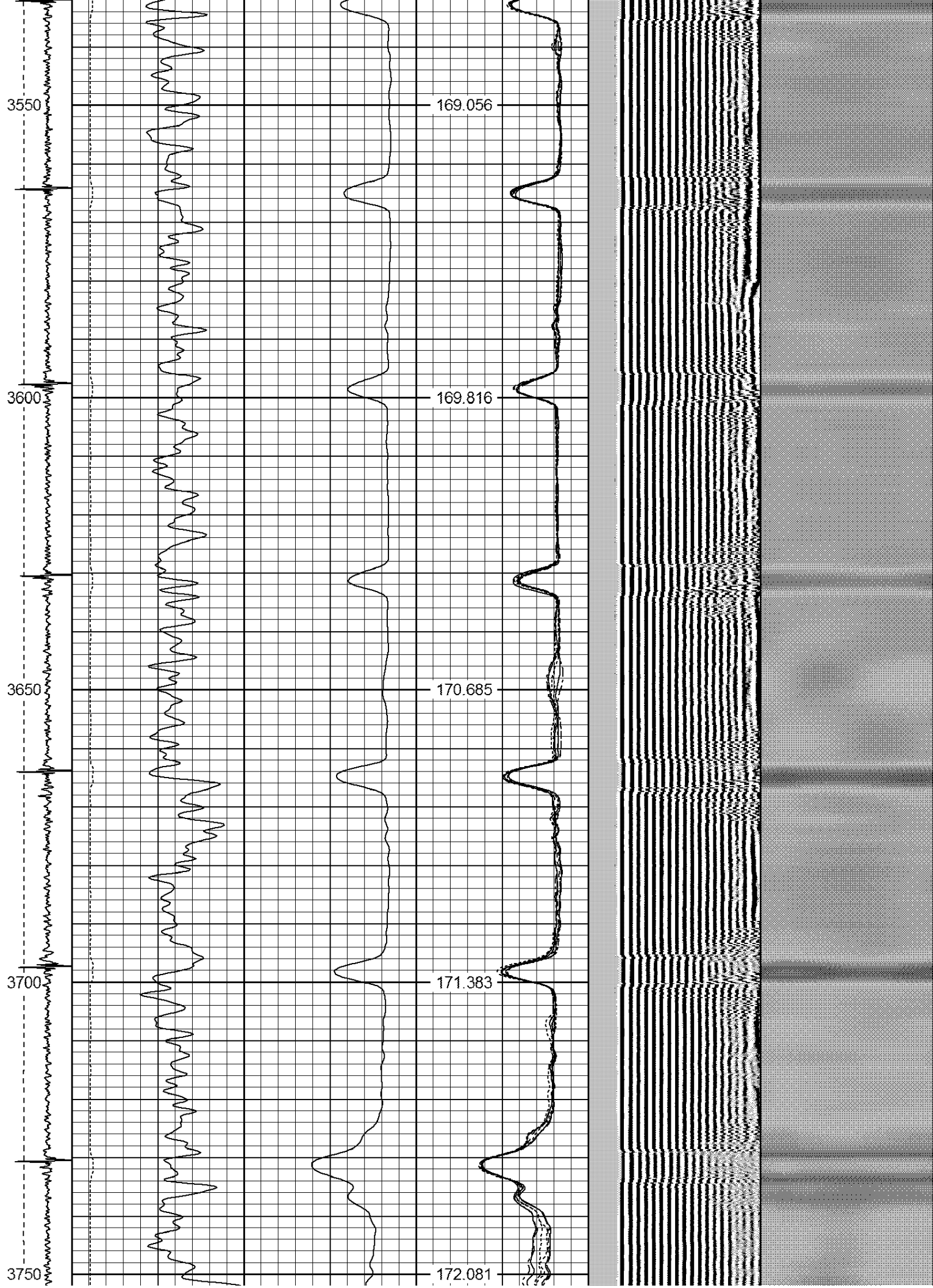
THANK YOU FOR USING WARRIOR !!!!!!!

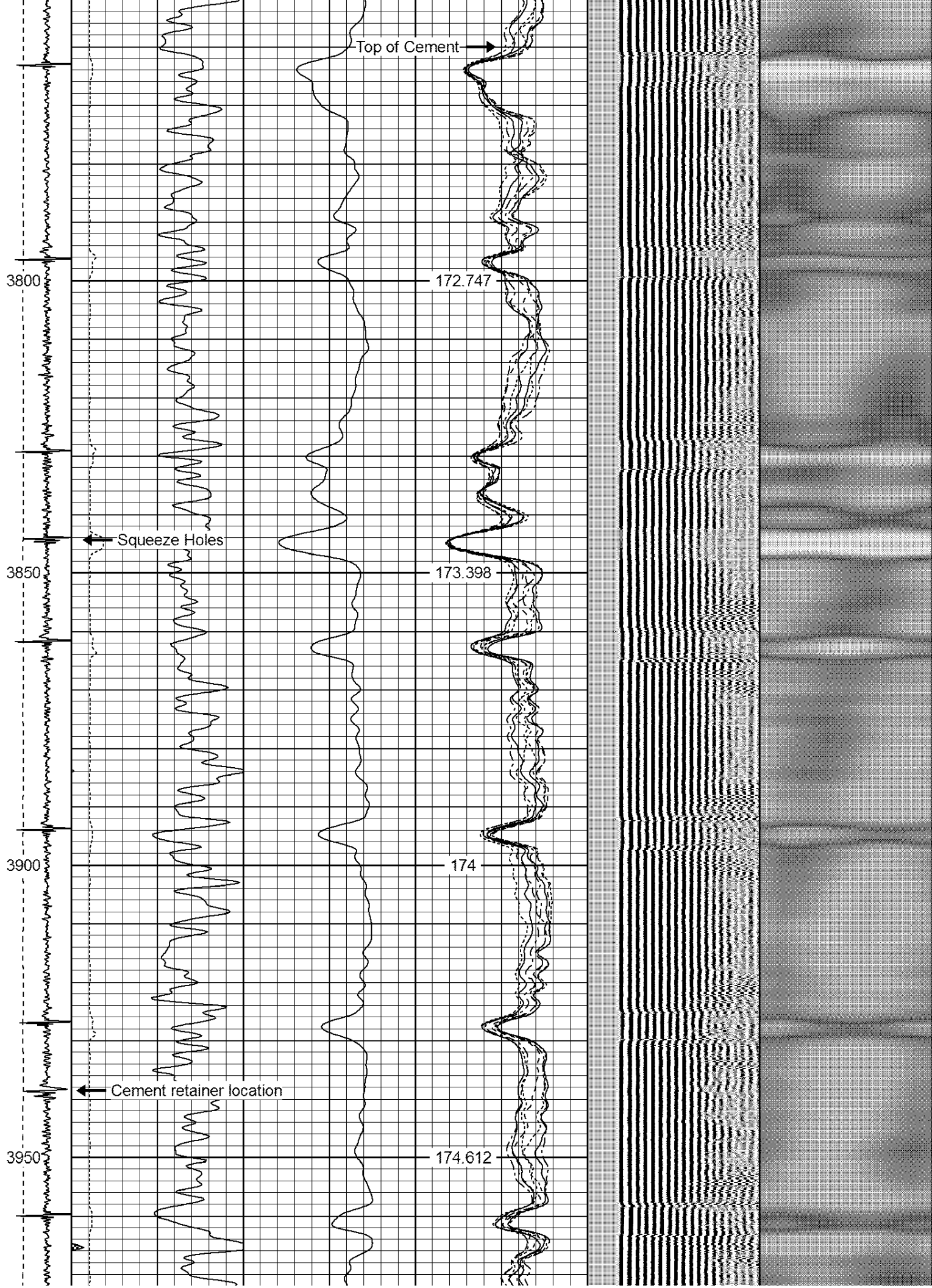
Sensor	Offset (ft)	Schematic	Description	Len (ft)	OD (in)	Wt (lb)
						

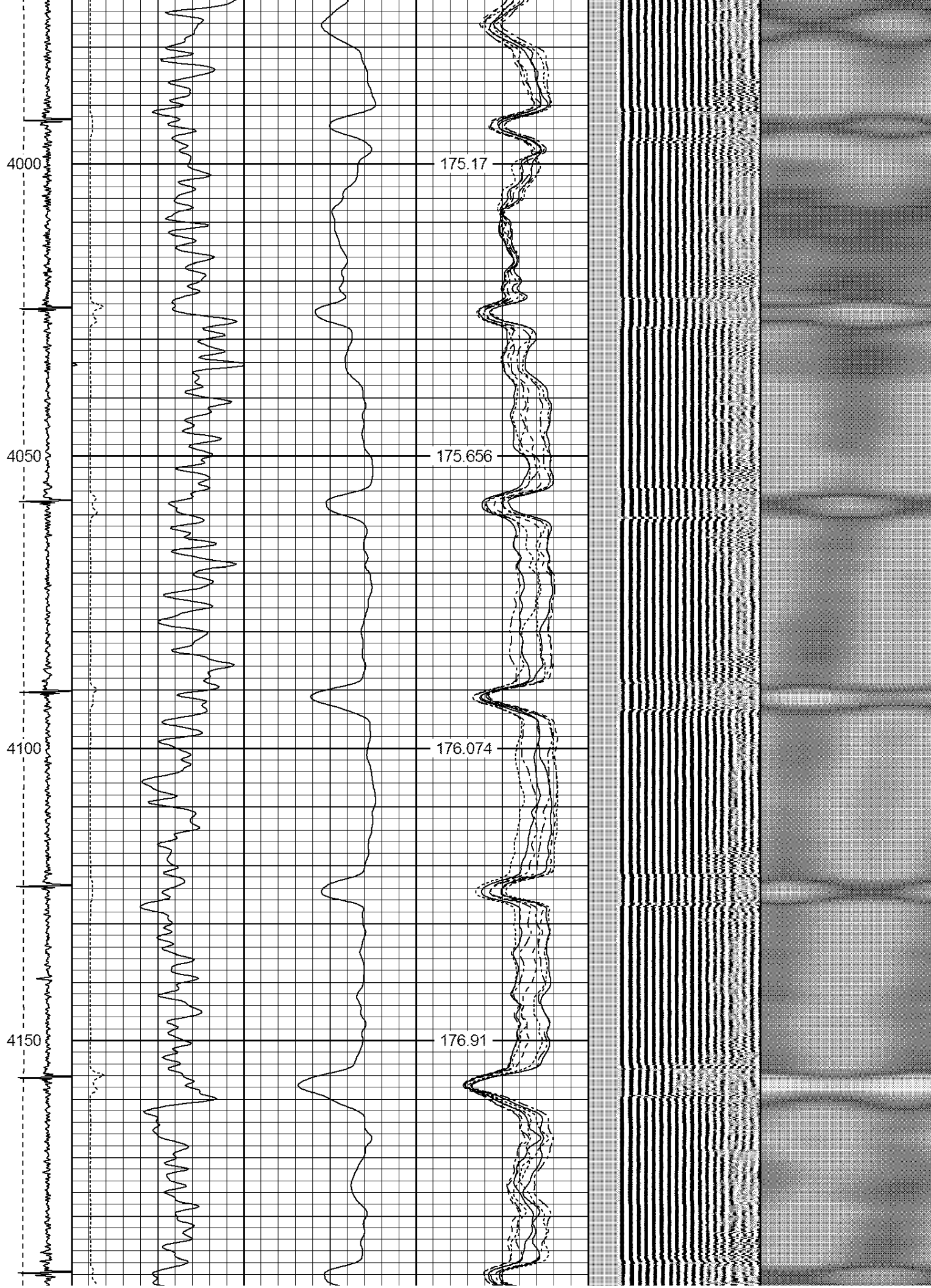
CNLSC	17.75		CNT-Probe_B (275) 6 bow centralizer	3.00	2.75	40.00
CNSSC	16.92					
HEADVOLT	16.08					
IntTemp	14.67					
WVF3FT	11.42					
WVFCAL	11.42					
WVFS1	11.42					
WVFS2	11.42					
WVFS3	11.42					
WVFS4	11.42					
WVFS5	11.42					
WVFS6	11.42					
WVFS7	11.42					
WVFS8	11.42					
WVF5FT	10.42					
CCL	3.64					
GR	0.90					
Dataset: uprr 22 pan am f gu1.db: field/well/run1/pass3 Total Length: 19.08 ft Total Weight: 160.00 lb O.D. 2.75 in						

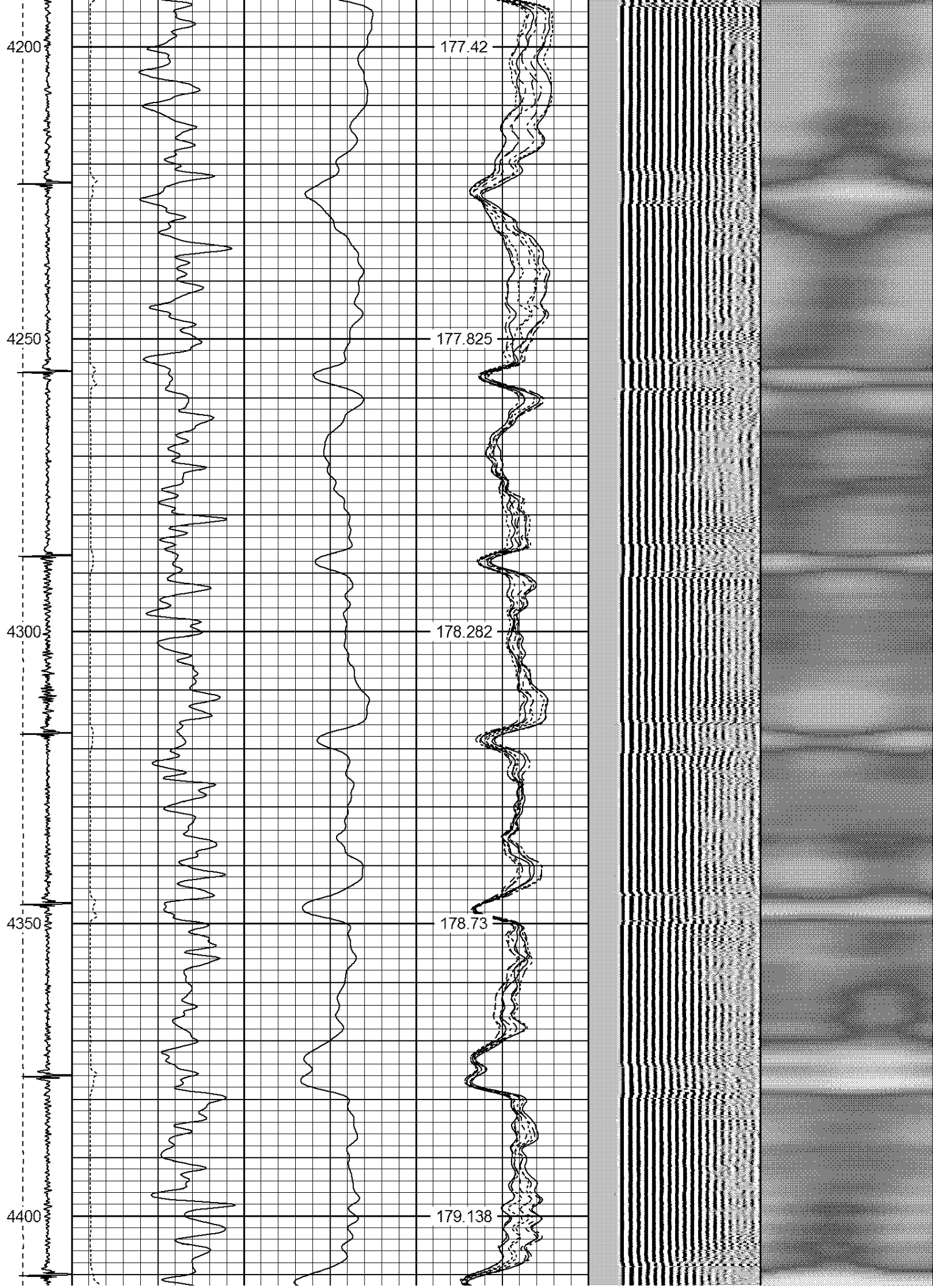
-15 CCL	5	200	TT (usec)	800	0	AMP (mV)	100	0	AMPS1	100	200	VDL	1200	1	Cement Map	8
LSPD	0	GR (GAPI)	200	0	AMPx5 (mV)	20	0	AMPS2	100					1		100
(ft/min)	200	GR (GAPI)	400					0	AMPS4	100						
0	250							0	AMPS5	100						
								0	AMPS6	100						
								0	AMPS7	100						
								0	AMPS8	100						
								IntTemp								
								(degF)								

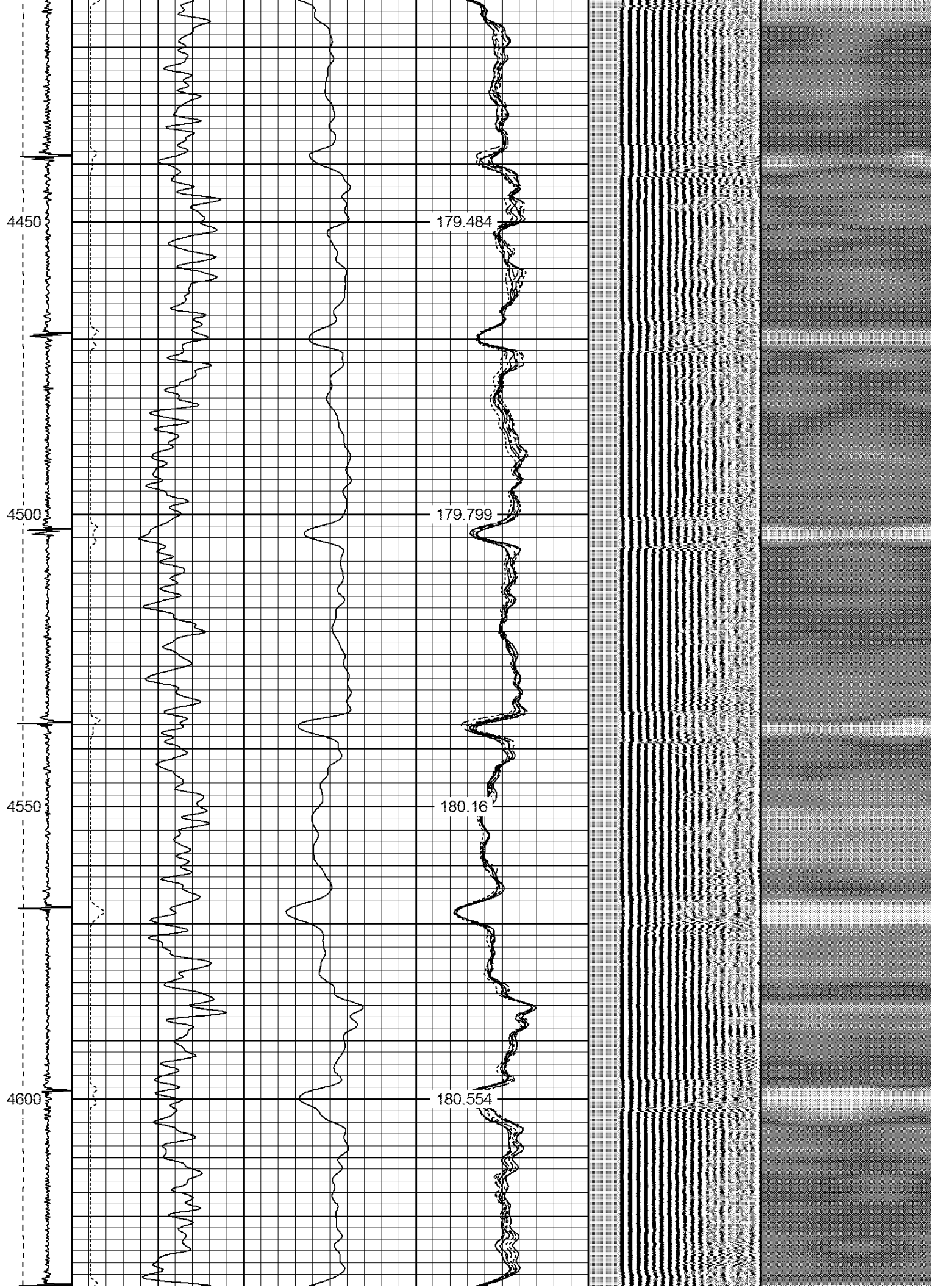


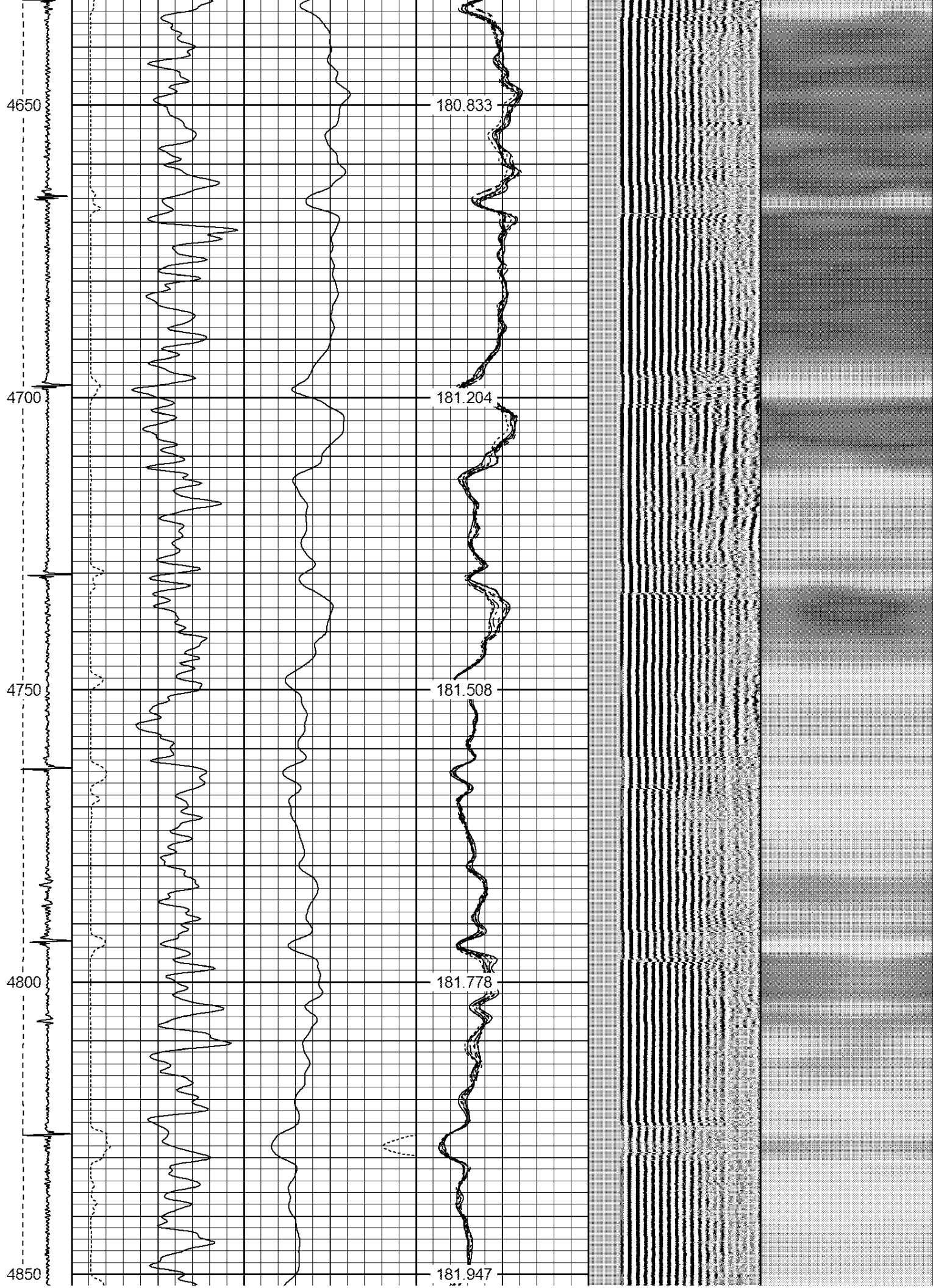


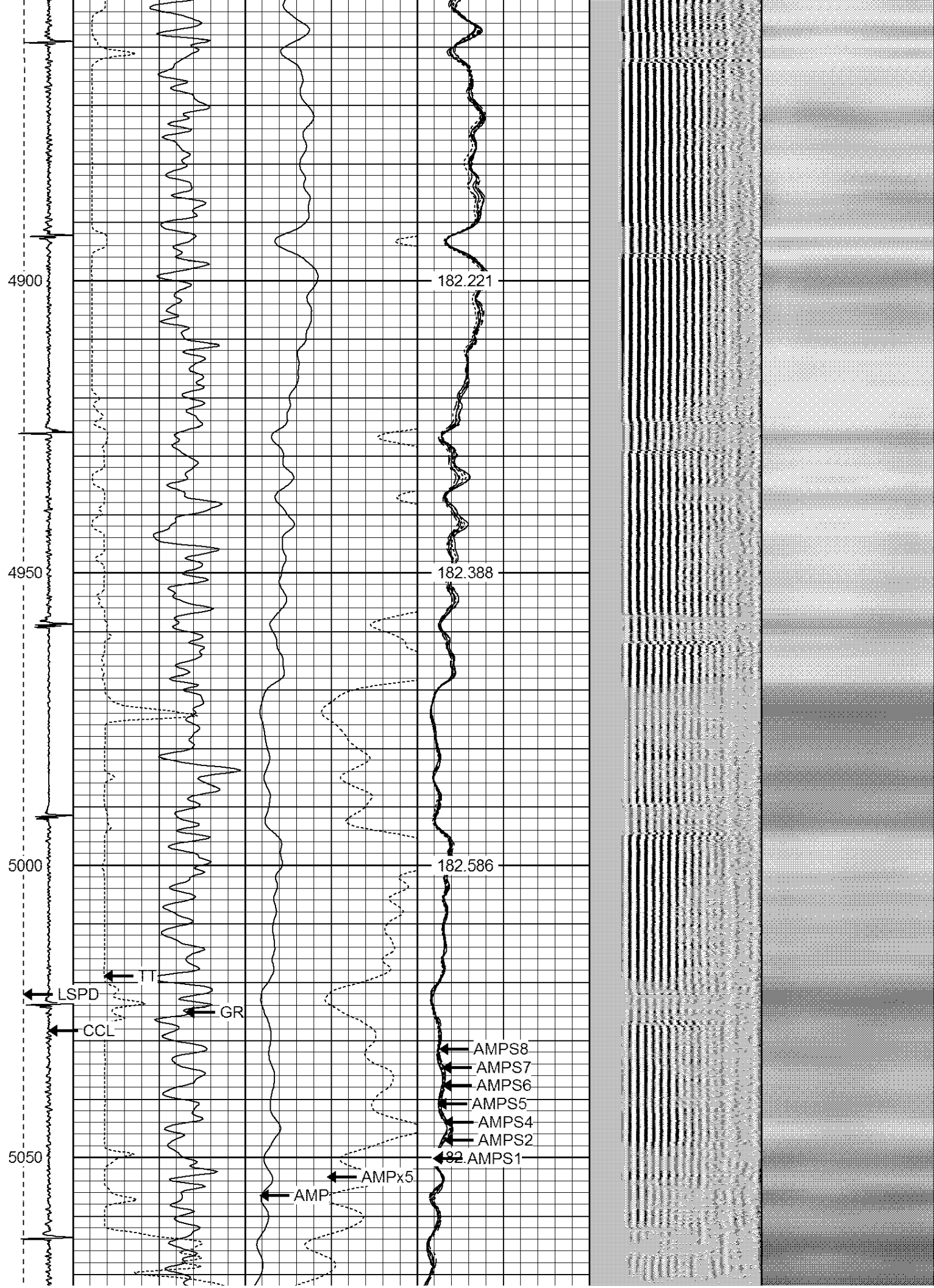


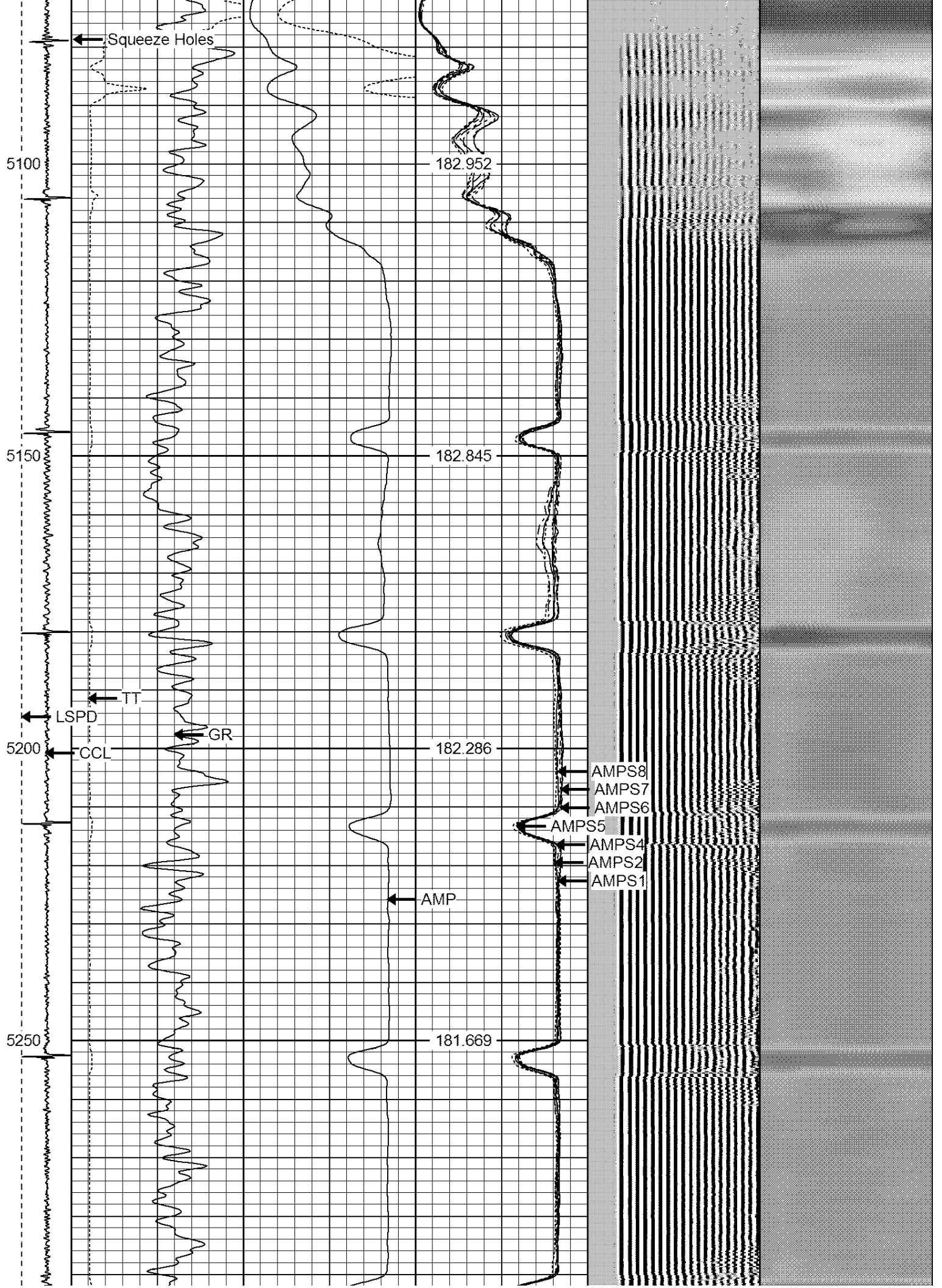


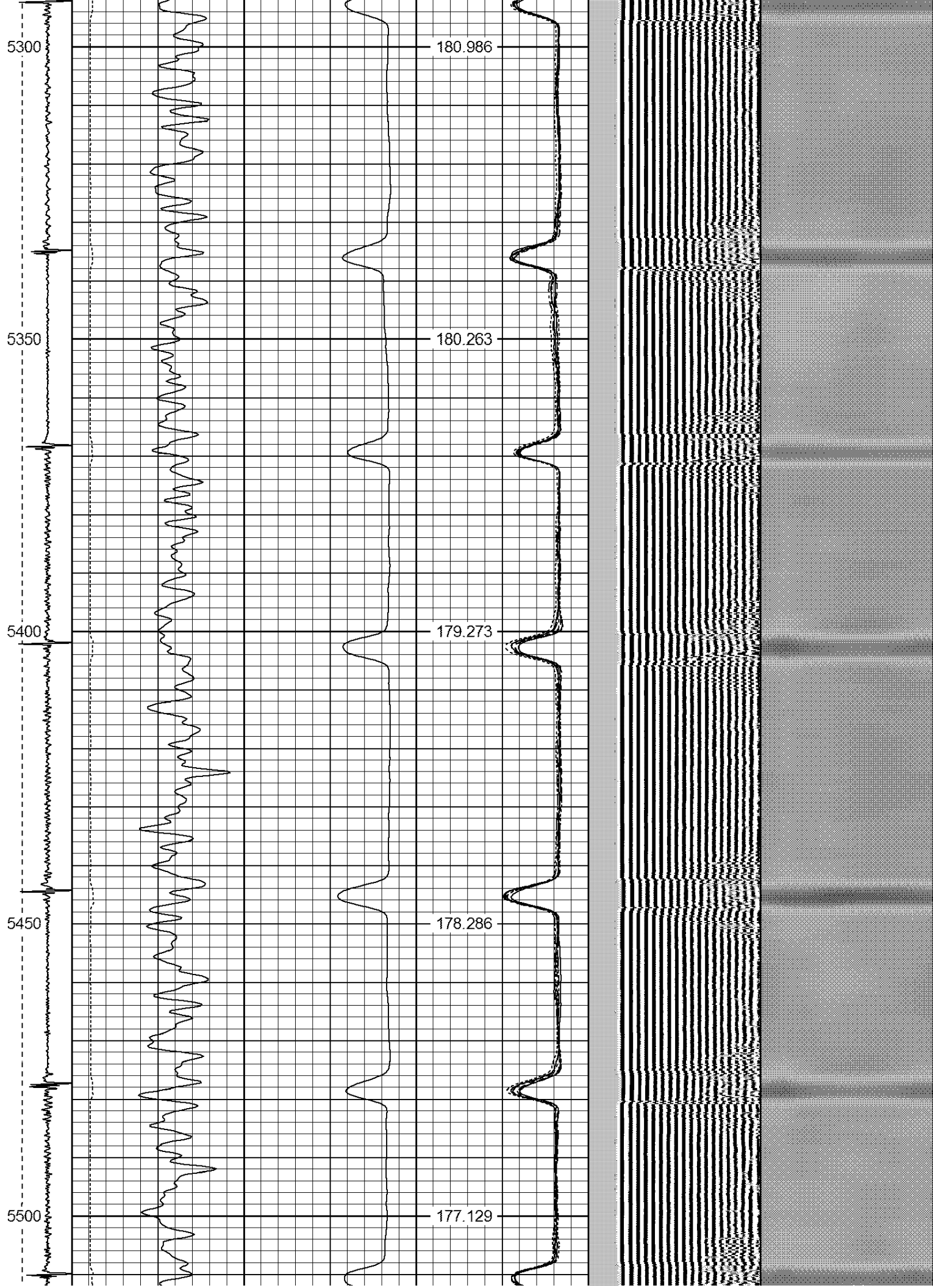


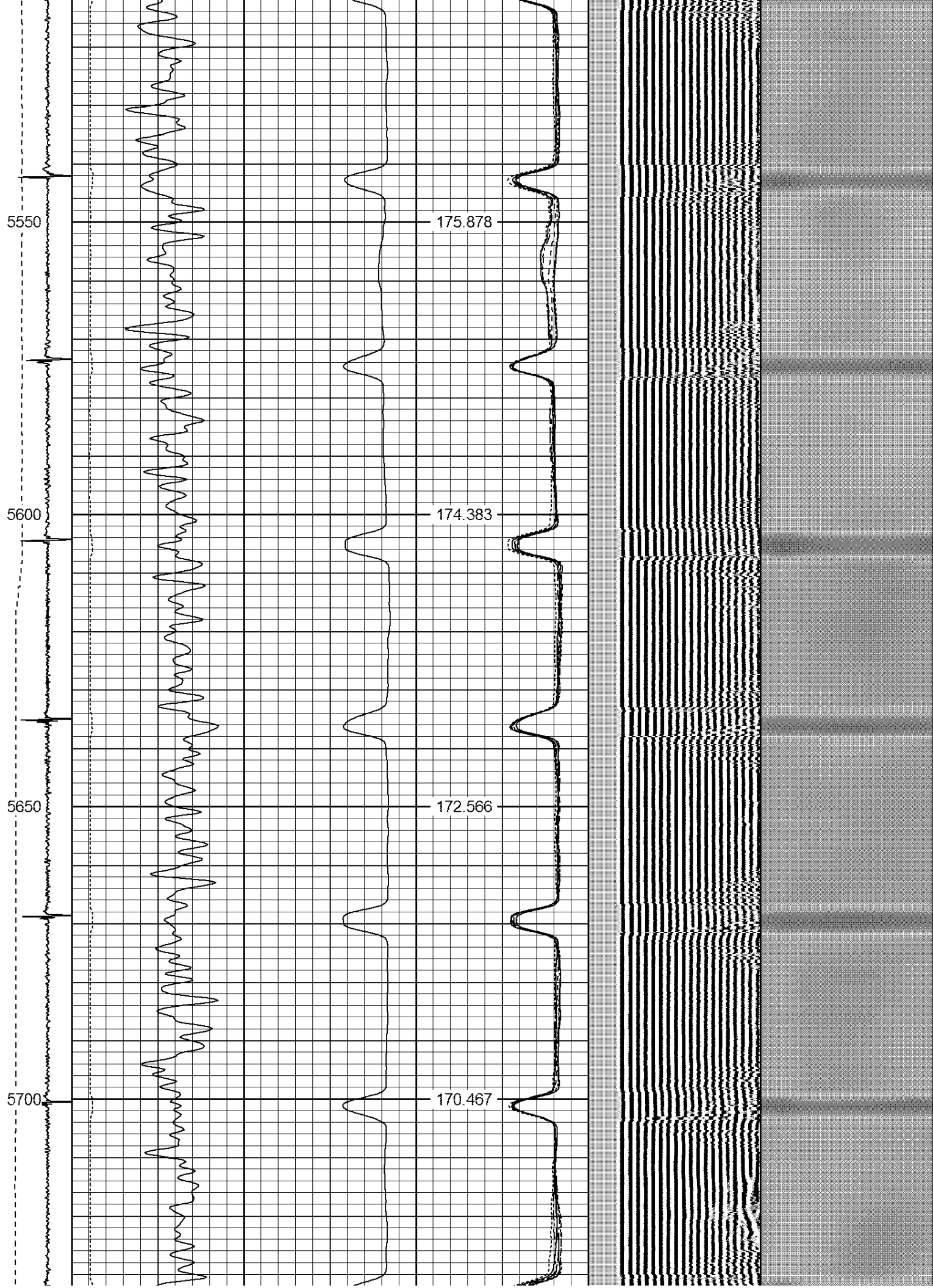














(ft/min)	200	GR (GAPI)	400
0	250		

0	AMPS4	100
0	AMPS5	100
0	AMPS6	100
0	AMPS7	100
0	AMPS8	100

IntTemp
(degF)

 WARRIOR ENERGY SERVICES	CompanyKERR McGEE OIL AND GAS WellUPRR 22 PAN AM "F" GU #1 FieldWATTENBERG CountyWELD StateCO
--	---