

# WELL LOCATION FOR AUGUSTUS ENERGY RESOURCES LLC

TAYLOR FAMILY 21-14 4N47W

**R 47 W**

## NOTES

BEARINGS SHOWN HEREON ARE  
BASED UPON RTK GPS  
OBSERVATIONS

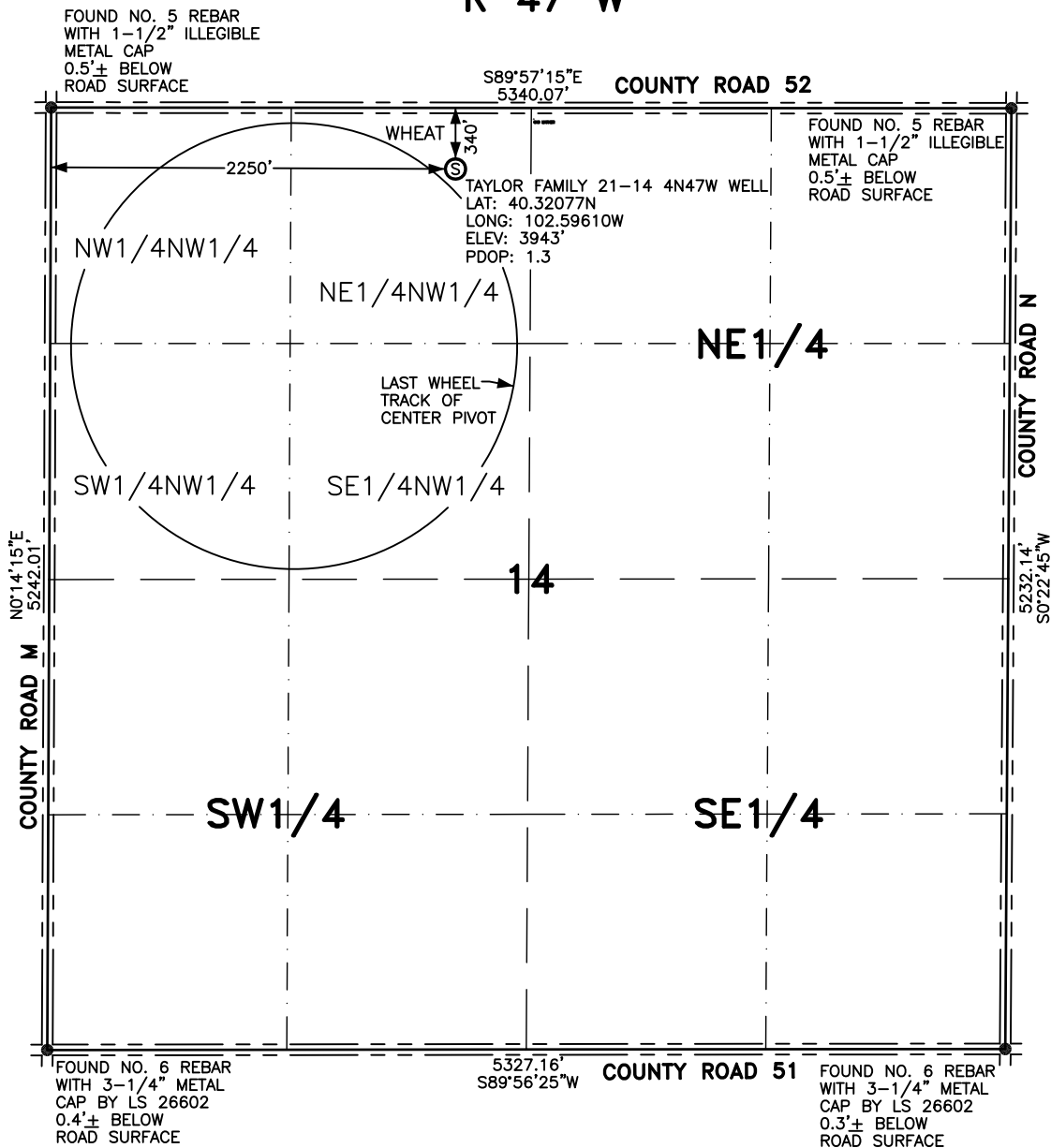
SEE LOCATION DRAWING FOR  
IMPROVEMENTS WITHIN 700' OF  
LOCATION.

USGS QUAD MAP:  
CLARKVILLE SE, COLO.

LAT/LONG VALUES ARE NAD83

ELEVATIONS BASED UPON NGS  
OPUS SOLUTION NAVD 88 DATUM

ALL DISTANCES TO SECTION LINES  
ARE MEASURED PERPENDICULAR  
TO AND ARE AT RIGHT ANGLES  
TO SAID SECTION LINES.



## LEGEND

Ⓢ FIELD SURVEYED  
WELL LOCATION

== == == ROAD

-x-x- FENCE



SCALE: 1" = 1000'



SCALE IN FEET

THIS WELL LOCATION PLAT HAS BEEN PREPARED FOR AUGUSTUS ENERGY RESOURCES LLC  
TO LOCATE THE TAYLOR FAMILY 21-14 4N47W WELL BEING 2250 FEET FROM THE WEST LINE AND  
340 FEET FROM THE NORTH LINE IN THE NE1/4NW1/4 OF SECTION 14,  
TOWNSHIP 4 NORTH, RANGE 47 WEST OF THE 6TH P.M., YUMA COUNTY, COLORADO.  
THE SURFACE ELEVATION AT THIS POINT IS 3943 FEET.  
THIS IS NOT A LAND SURVEY PLAT.



**LEIBERT-McATEE & ASSOCIATES, INC.**

P.O. BOX 442 615 SOUTH TENTH AVENUE  
STERLING, CO 80751 970-522-1960

FIELD DATE: 6-13-14	DWG DATE: 6-25-14	GPS OPERATOR: DARREN VEAL
TAYLOR FAMILY 21-14 4N47W	DWG NO. 840-14	SHEET 1 OF 1