

# BONANZA CREEK OIL COMPANY

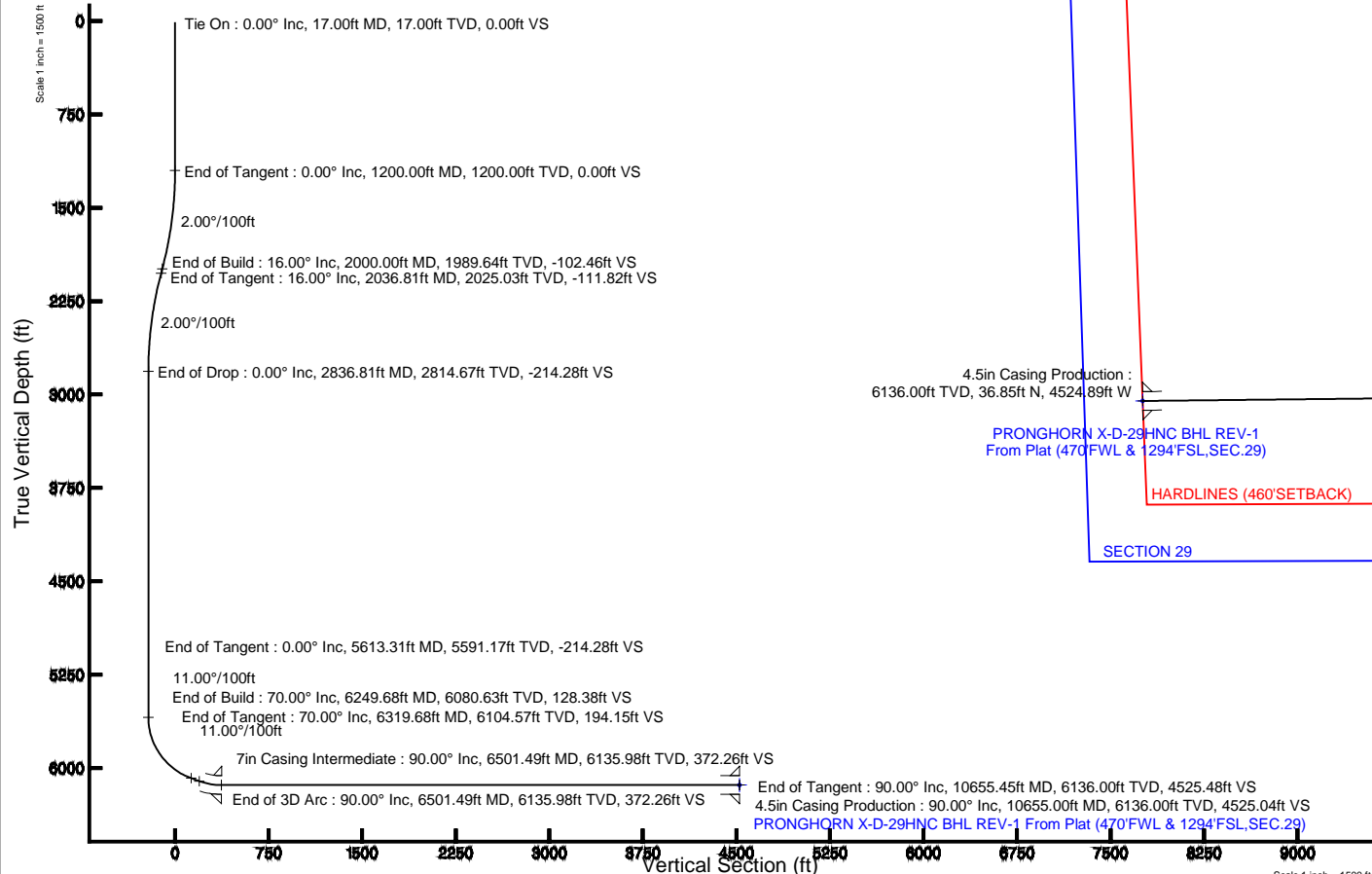
Location: COLORADO Slot: SLOT#02 PRONGHORN X-D-29HNC (1240'FSL & 230'FEL, SEC.29)  
Field: WELD COUNTY Well: PRONGHORN X-D-29HNC  
Facility: SEC.29-T5N-R61W Wellbore: PRONGHORN X-D-29HNC PWB

Plot reference wellpath is PRONGHORN X-D-29HNC (REV-A.0) PWP

True vertical depths are referenced to RIG (RKB)	Grid System: NAD83 / Lambert Colorado SP, Northern Zone (501), US feet
Measured depths are referenced to RIG (RKB)	North Reference: True north
RIG (RKB) to Mean Sea Level: 4619 feet	Scale: True distance
Mean Sea Level to Mud line (At Slot: SLOT#02 PRONGHORN X-D-29HNC (1240'FSL & 230'FEL, SEC.29)): 0 feet	Depths are in feet
Coordinates are in feet referenced to Slot	Created by: guemaler on 5/9/2014

## Location Information

Facility Name	Grid East (US ft)	Grid North (US ft)	Latitude	Longitude
SEC.29-T5N-R61W	3355398.328	1379448.092	40°22'04.692"N	104°13'28.164"W
Slot	Local N (ft)	Local E (ft)	Grid East (US ft)	Grid North (US ft)
SLOT#02 PRONGHORN X-D-29HNC (1240'FSL & 230'FEL, SEC.29)	0.00	19.51	3355417.831	1379448.373
RIG (RKB) to Mud line (At Slot: SLOT#02 PRONGHORN X-D-29HNC (1240'FSL & 230'FEL, SEC.29))				4619ft
Mean Sea Level to Mud line (At Slot: SLOT#02 PRONGHORN X-D-29HNC (1240'FSL & 230'FEL, SEC.29))				0ft
RIG (RKB) to Mean Sea Level				4619ft

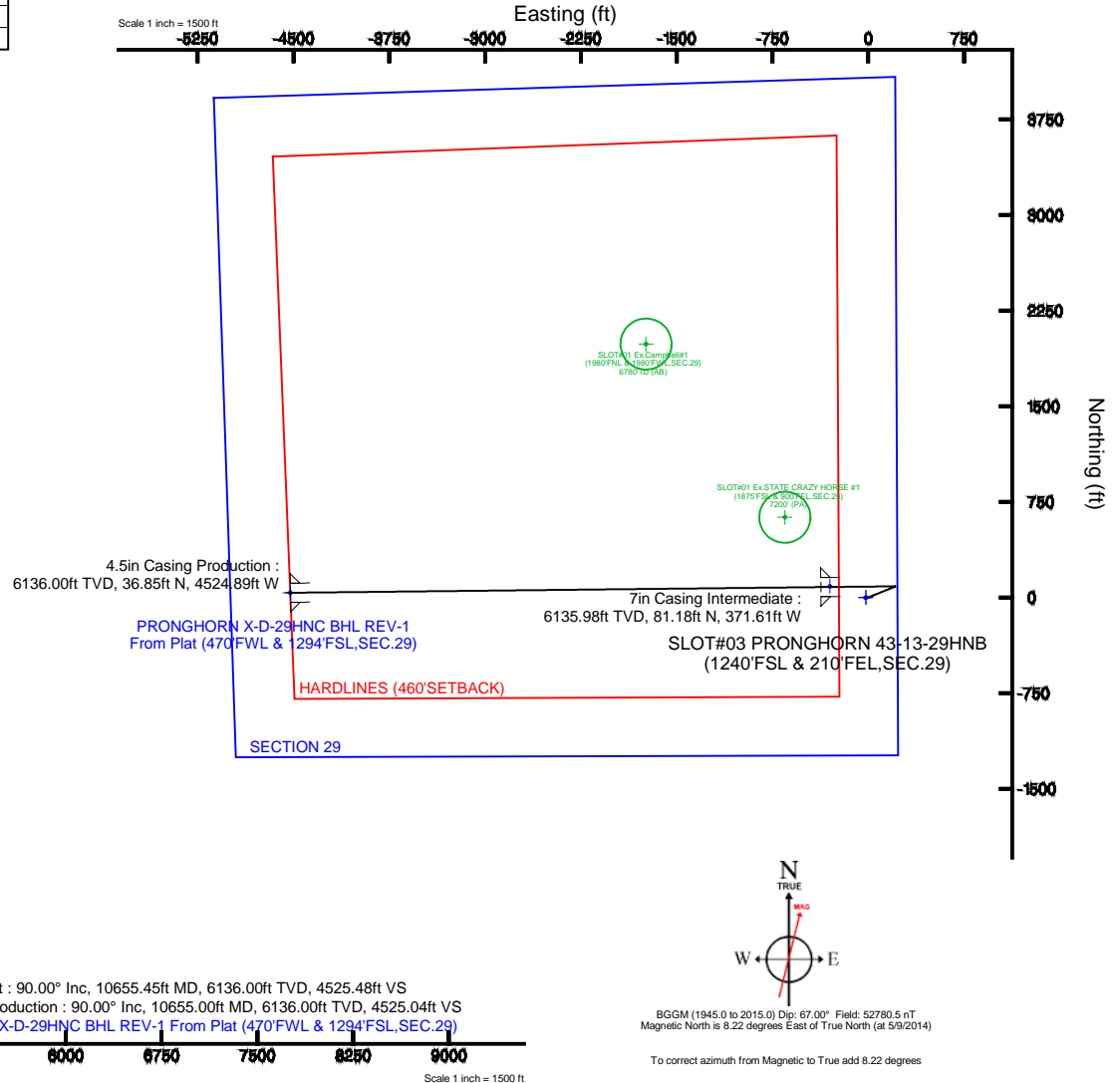


## Well Profile Data

Design Comment	MD (ft)	Inc (°)	Az (°)	TVD (ft)	Local N (ft)	Local E (ft)	DLS (°/100ft)	VS (ft)
Tie On	17.00	0.000	67.869	17.00	0.00	0.00	0.00	0.00
End of Tangent	1200.00	0.000	67.869	1200.00	0.00	0.00	0.00	0.00
End of Build	2000.00	16.000	67.869	1989.64	41.81	102.80	2.00	-102.46
End of Tangent	2036.81	16.000	67.869	2025.03	45.63	112.20	0.00	-111.82
End of Drop	2836.81	0.000	269.389	2814.67	87.44	215.00	2.00	-214.28
End of Tangent	5613.31	0.000	269.389	5591.17	87.44	215.00	0.00	-214.28
End of Build	6249.68	70.000	269.389	6080.63	83.78	-127.70	11.00	128.38
End of Tangent	6319.68	70.000	269.389	6104.57	83.08	-193.48	0.00	194.15
End of 3D Arc	6501.49	90.000	269.388	6135.98	81.18	-371.61	11.00	372.26
End of Tangent	10655.45	90.000	269.388	6136.00	36.85	-4525.33	0.00	4525.48

## Survey Program

Start MD (ft)	End MD (ft)	Tool	Model	Log Name/Comment	Wellbore
17.00	10655.45	NavTrak	NavTrak (Standard)		PRONGHORN X-D-29HNC PWB





# Planned Wellpath Report

## PRONGHORN X-D-29HNC (REV-A.0) PWP

Page 1 of 7



### REFERENCE WELLPATH IDENTIFICATION

Operator	BONANZA CREEK OIL COMPANY	Slot	SLOT#02 PRONGHORN X-D-29HNC (1240'FSL & 230'FEL,SEC.29)
Area	COLORADO	Well	PRONGHORN X-D-29HNC
Field	WELD COUNTY	Wellbore	PRONGHORN X-D-29HNC PWB
Facility	SEC.29-T5N-R61W		

### REPORT SETUP INFORMATION

Projection System	NAD83 / Lambert Colorado SP, Northern Zone (501), US feet	Software System	WellArchitect® 4.0.0
North Reference	True	User	Guenaler
Scale	0.999959	Report Generated	5/9/2014 at 5:30:32 PM
Convergence at slot	n/a	Database/Source file	WA_Denver/PRONGHORN_X-D-29HNC_PWB.xml

### WELLPATH LOCATION

	Local coordinates		Grid coordinates		Geographic coordinates	
	North[ft]	East[ft]	Easting[US ft]	Northing[US ft]	Latitude	Longitude
Slot Location	0.00	19.51	3355417.83	1379448.37	40°22'04.692"N	104°13'27.912"W
Facility Reference Pt			3355398.33	1379448.09	40°22'04.692"N	104°13'28.164"W
Field Reference Pt			3327718.19	1377782.99	40°21'52.020"N	104°19'26.040"W

### WELLPATH DATUM

Calculation method	Minimum curvature	RIG (RKB) to Facility Vertical Datum	4619.00ft
Horizontal Reference Pt	Slot	RIG (RKB) to Mean Sea Level	4619.00ft
Vertical Reference Pt	RIG (RKB)	RIG (RKB) to Mud Line at Slot (SLOT#02 PRONGHORN X-D-29HNC (1240'FSL & 230'FEL,SEC.29))	4619.00ft
MD Reference Pt	RIG (RKB)	Section Origin	N 0.00, E 0.00 ft
Field Vertical Reference	Mean Sea Level	Section Azimuth	270.47°



# Planned Wellpath Report

## PRONGHORN X-D-29HNC (REV-A.0) PWP

Page 2 of 7



### REFERENCE WELLPATH IDENTIFICATION

Operator	BONANZA CREEK OIL COMPANY	Slot	SLOT#02 PRONGHORN X-D-29HNC (1240'FSL & 230'FEL,SEC.29)
Area	COLORADO	Well	PRONGHORN X-D-29HNC
Field	WELD COUNTY	Wellbore	PRONGHORN X-D-29HNC PWB
Facility	SEC.29-T5N-R61W		

### WELLPATH DATA (117 stations) † = interpolated/extrapolated station

MD [ft]	Inclination [°]	Azimuth [°]	TVD [ft]	Vert Sect [ft]	North [ft]	East [ft]	Latitude	Longitude	DLS [°/100ft]	Comments
0.00†	0.000	67.869	0.00	0.00	0.00	0.00	40°22'04.692"N	104°13'27.912"W	0.00	
17.00	0.000	67.869	17.00	0.00	0.00	0.00	40°22'04.692"N	104°13'27.912"W	0.00	Tie On
117.00†	0.000	67.869	117.00	0.00	0.00	0.00	40°22'04.692"N	104°13'27.912"W	0.00	
217.00†	0.000	67.869	217.00	0.00	0.00	0.00	40°22'04.692"N	104°13'27.912"W	0.00	
317.00†	0.000	67.869	317.00	0.00	0.00	0.00	40°22'04.692"N	104°13'27.912"W	0.00	
417.00†	0.000	67.869	417.00	0.00	0.00	0.00	40°22'04.692"N	104°13'27.912"W	0.00	
517.00†	0.000	67.869	517.00	0.00	0.00	0.00	40°22'04.692"N	104°13'27.912"W	0.00	
617.00†	0.000	67.869	617.00	0.00	0.00	0.00	40°22'04.692"N	104°13'27.912"W	0.00	
717.00†	0.000	67.869	717.00	0.00	0.00	0.00	40°22'04.692"N	104°13'27.912"W	0.00	
817.00†	0.000	67.869	817.00	0.00	0.00	0.00	40°22'04.692"N	104°13'27.912"W	0.00	
917.00†	0.000	67.869	917.00	0.00	0.00	0.00	40°22'04.692"N	104°13'27.912"W	0.00	
1017.00†	0.000	67.869	1017.00	0.00	0.00	0.00	40°22'04.692"N	104°13'27.912"W	0.00	
1117.00†	0.000	67.869	1117.00	0.00	0.00	0.00	40°22'04.692"N	104°13'27.912"W	0.00	
1200.00	0.000	67.869	1200.00	0.00	0.00	0.00	40°22'04.692"N	104°13'27.912"W	0.00	End of Tangent
1217.00†	0.340	67.869	1217.00	-0.05	0.02	0.05	40°22'04.692"N	104°13'27.911"W	2.00	
1317.00†	2.340	67.869	1316.97	-2.21	0.90	2.21	40°22'04.701"N	104°13'27.883"W	2.00	
1417.00†	4.340	67.869	1416.79	-7.58	3.09	7.61	40°22'04.723"N	104°13'27.814"W	2.00	
1517.00†	6.340	67.869	1516.35	-16.18	6.60	16.23	40°22'04.757"N	104°13'27.702"W	2.00	
1617.00†	8.340	67.869	1615.53	-27.97	11.41	28.06	40°22'04.805"N	104°13'27.549"W	2.00	
1717.00†	10.340	67.869	1714.20	-42.95	17.53	43.10	40°22'04.865"N	104°13'27.355"W	2.00	
1817.00†	12.340	67.869	1812.24	-61.10	24.93	61.31	40°22'04.938"N	104°13'27.120"W	2.00	
1917.00†	14.340	67.869	1909.54	-82.41	33.63	82.68	40°22'05.024"N	104°13'26.844"W	2.00	
2000.00	16.000	67.869	1989.64	-102.46	41.81	102.80	40°22'05.105"N	104°13'26.584"W	2.00	End of Build
2017.00†	16.000	67.869	2005.98	-106.78	43.57	107.14	40°22'05.123"N	104°13'26.528"W	0.00	
2036.81	16.000	67.869	2025.03	-111.82	45.63	112.20	40°22'05.143"N	104°13'26.462"W	0.00	End of Tangent
2117.00†	14.396	67.869	2102.41	-131.23	53.55	131.67	40°22'05.221"N	104°13'26.211"W	2.00	
2217.00†	12.396	67.869	2199.68	-152.62	62.28	153.13	40°22'05.307"N	104°13'25.934"W	2.00	
2317.00†	10.396	67.869	2297.71	-170.86	69.72	171.43	40°22'05.381"N	104°13'25.697"W	2.00	
2417.00†	8.396	67.869	2396.36	-185.93	75.87	186.56	40°22'05.442"N	104°13'25.502"W	2.00	
2517.00†	6.396	67.869	2495.52	-197.82	80.72	198.48	40°22'05.490"N	104°13'25.348"W	2.00	



# Planned Wellpath Report

## PRONGHORN X-D-29HNC (REV-A.0) PWP

Page 3 of 7



### REFERENCE WELLPATH IDENTIFICATION

Operator	BONANZA CREEK OIL COMPANY	Slot	SLOT#02 PRONGHORN X-D-29HNC (1240'FSL & 230'FEL,SEC.29)
Area	COLORADO	Well	PRONGHORN X-D-29HNC
Field	WELD COUNTY	Wellbore	PRONGHORN X-D-29HNC PWB
Facility	SEC.29-T5N-R61W		

### WELLPATH DATA (117 stations) † = interpolated/extrapolated station

MD [ft]	Inclination [°]	Azimuth [°]	TVD [ft]	Vert Sect [ft]	North [ft]	East [ft]	Latitude	Longitude	DLS [°/100ft]	Comments
2617.00†	4.396	67.869	2595.08	-206.50	84.26	207.19	40°22'05.525"N	104°13'25.235"W	2.00	
2717.00†	2.396	67.869	2694.89	-211.97	86.50	212.68	40°22'05.547"N	104°13'25.164"W	2.00	
2817.00†	0.396	67.869	2794.86	-214.22	87.41	214.94	40°22'05.556"N	104°13'25.135"W	2.00	
2836.81	0.000	269.389	2814.67	-214.28	87.44	215.00	40°22'05.556"N	104°13'25.134"W	2.00	End of Drop
2917.00†	0.000	269.389	2894.86	-214.28	87.44	215.00	40°22'05.556"N	104°13'25.134"W	0.00	
3017.00†	0.000	269.389	2994.86	-214.28	87.44	215.00	40°22'05.556"N	104°13'25.134"W	0.00	
3117.00†	0.000	269.389	3094.86	-214.28	87.44	215.00	40°22'05.556"N	104°13'25.134"W	0.00	
3217.00†	0.000	269.389	3194.86	-214.28	87.44	215.00	40°22'05.556"N	104°13'25.134"W	0.00	
3317.00†	0.000	269.389	3294.86	-214.28	87.44	215.00	40°22'05.556"N	104°13'25.134"W	0.00	
3417.00†	0.000	269.389	3394.86	-214.28	87.44	215.00	40°22'05.556"N	104°13'25.134"W	0.00	
3517.00†	0.000	269.389	3494.86	-214.28	87.44	215.00	40°22'05.556"N	104°13'25.134"W	0.00	
3617.00†	0.000	269.389	3594.86	-214.28	87.44	215.00	40°22'05.556"N	104°13'25.134"W	0.00	
3717.00†	0.000	269.389	3694.86	-214.28	87.44	215.00	40°22'05.556"N	104°13'25.134"W	0.00	
3817.00†	0.000	269.389	3794.86	-214.28	87.44	215.00	40°22'05.556"N	104°13'25.134"W	0.00	
3917.00†	0.000	269.389	3894.86	-214.28	87.44	215.00	40°22'05.556"N	104°13'25.134"W	0.00	
4017.00†	0.000	269.389	3994.86	-214.28	87.44	215.00	40°22'05.556"N	104°13'25.134"W	0.00	
4117.00†	0.000	269.389	4094.86	-214.28	87.44	215.00	40°22'05.556"N	104°13'25.134"W	0.00	
4217.00†	0.000	269.389	4194.86	-214.28	87.44	215.00	40°22'05.556"N	104°13'25.134"W	0.00	
4317.00†	0.000	269.389	4294.86	-214.28	87.44	215.00	40°22'05.556"N	104°13'25.134"W	0.00	
4417.00†	0.000	269.389	4394.86	-214.28	87.44	215.00	40°22'05.556"N	104°13'25.134"W	0.00	
4517.00†	0.000	269.389	4494.86	-214.28	87.44	215.00	40°22'05.556"N	104°13'25.134"W	0.00	
4617.00†	0.000	269.389	4594.86	-214.28	87.44	215.00	40°22'05.556"N	104°13'25.134"W	0.00	
4717.00†	0.000	269.389	4694.86	-214.28	87.44	215.00	40°22'05.556"N	104°13'25.134"W	0.00	
4817.00†	0.000	269.389	4794.86	-214.28	87.44	215.00	40°22'05.556"N	104°13'25.134"W	0.00	
4917.00†	0.000	269.389	4894.86	-214.28	87.44	215.00	40°22'05.556"N	104°13'25.134"W	0.00	
5017.00†	0.000	269.389	4994.86	-214.28	87.44	215.00	40°22'05.556"N	104°13'25.134"W	0.00	
5117.00†	0.000	269.389	5094.86	-214.28	87.44	215.00	40°22'05.556"N	104°13'25.134"W	0.00	
5217.00†	0.000	269.389	5194.86	-214.28	87.44	215.00	40°22'05.556"N	104°13'25.134"W	0.00	
5317.00†	0.000	269.389	5294.86	-214.28	87.44	215.00	40°22'05.556"N	104°13'25.134"W	0.00	
5417.00†	0.000	269.389	5394.86	-214.28	87.44	215.00	40°22'05.556"N	104°13'25.134"W	0.00	



# Planned Wellpath Report

## PRONGHORN X-D-29HNC (REV-A.0) PWP

Page 4 of 7



### REFERENCE WELLPATH IDENTIFICATION

Operator	BONANZA CREEK OIL COMPANY	Slot	SLOT#02 PRONGHORN X-D-29HNC (1240'FSL & 230'FEL,SEC.29)
Area	COLORADO	Well	PRONGHORN X-D-29HNC
Field	WELD COUNTY	Wellbore	PRONGHORN X-D-29HNC PWB
Facility	SEC.29-T5N-R61W		

### WELLPATH DATA (117 stations) † = interpolated/extrapolated station

MD [ft]	Inclination [°]	Azimuth [°]	TVD [ft]	Vert Sect [ft]	North [ft]	East [ft]	Latitude	Longitude	DLS [°/100ft]	Comments
5517.00†	0.000	269.389	5494.86	-214.28	87.44	215.00	40°22'05.556"N	104°13'25.134"W	0.00	
5613.31	0.000	269.389	5591.17	-214.28	87.44	215.00	40°22'05.556"N	104°13'25.134"W	0.00	End of Tangent
5617.00†	0.406	269.389	5594.86	-214.27	87.44	214.99	40°22'05.556"N	104°13'25.135"W	11.00	
5717.00†	11.406	269.389	5694.18	-204.00	87.33	204.71	40°22'05.555"N	104°13'25.267"W	11.00	
5817.00†	22.406	269.389	5789.71	-174.97	87.02	175.68	40°22'05.552"N	104°13'25.642"W	11.00	
5917.00†	33.406	269.389	5877.94	-128.24	86.52	128.95	40°22'05.547"N	104°13'26.246"W	11.00	
6017.00†	44.406	269.389	5955.64	-65.55	85.85	66.25	40°22'05.540"N	104°13'27.056"W	11.00	
6117.00†	55.406	269.389	6019.95	10.82	85.04	-10.13	40°22'05.532"N	104°13'28.043"W	11.00	
6217.00†	66.406	269.389	6068.50	98.05	84.11	-97.37	40°22'05.523"N	104°13'29.170"W	11.00	
6249.68	70.000	269.389	6080.63	128.38	83.78	-127.70	40°22'05.520"N	104°13'29.562"W	11.00	End of Build
6317.00†	70.000	269.389	6103.66	191.63	83.11	-190.96	40°22'05.513"N	104°13'30.379"W	0.00	
6319.68	70.000	269.389	6104.57	194.15	83.08	-193.48	40°22'05.513"N	104°13'30.412"W	0.00	End of Tangent
6417.00†	80.706	269.389	6129.15	288.16	82.08	-287.50	40°22'05.503"N	104°13'31.626"W	11.00	
6501.49	90.000	269.388	6135.98	372.26	81.18	-371.61	40°22'05.494"N	104°13'32.713"W	11.00	End of 3D Arc
6517.00†	90.000	269.388	6135.98	387.77	81.01	-387.12	40°22'05.493"N	104°13'32.913"W	0.00	
6617.00†	90.000	269.388	6135.98	487.75	79.95	-487.12	40°22'05.482"N	104°13'34.205"W	0.00	
6717.00†	90.000	269.388	6135.98	587.73	78.88	-587.11	40°22'05.471"N	104°13'35.497"W	0.00	
6817.00†	90.000	269.388	6135.98	687.72	77.81	-687.10	40°22'05.461"N	104°13'36.789"W	0.00	
6917.00†	90.000	269.388	6135.98	787.70	76.74	-787.10	40°22'05.450"N	104°13'38.081"W	0.00	
7017.00†	90.000	269.388	6135.99	887.68	75.68	-887.09	40°22'05.440"N	104°13'39.373"W	0.00	
7117.00†	90.000	269.388	6135.99	987.66	74.61	-987.09	40°22'05.429"N	104°13'40.664"W	0.00	
7217.00†	90.000	269.388	6135.99	1087.64	73.54	-1087.08	40°22'05.418"N	104°13'41.956"W	0.00	
7317.00†	90.000	269.388	6135.99	1187.63	72.48	-1187.08	40°22'05.408"N	104°13'43.248"W	0.00	
7417.00†	90.000	269.388	6135.99	1287.61	71.41	-1287.07	40°22'05.397"N	104°13'44.540"W	0.00	
7517.00†	90.000	269.388	6135.99	1387.59	70.34	-1387.06	40°22'05.387"N	104°13'45.832"W	0.00	
7617.00†	90.000	269.388	6135.99	1487.57	69.27	-1487.06	40°22'05.376"N	104°13'47.124"W	0.00	
7717.00†	90.000	269.388	6135.99	1587.56	68.21	-1587.05	40°22'05.365"N	104°13'48.416"W	0.00	
7817.00†	90.000	269.388	6135.99	1687.54	67.14	-1687.05	40°22'05.355"N	104°13'49.707"W	0.00	
7917.00†	90.000	269.388	6135.99	1787.52	66.07	-1787.04	40°22'05.344"N	104°13'50.999"W	0.00	
8017.00†	90.000	269.388	6135.99	1887.50	65.00	-1887.04	40°22'05.334"N	104°13'52.291"W	0.00	



# Planned Wellpath Report

## PRONGHORN X-D-29HNC (REV-A.0) PWP

Page 5 of 7



REFERENCE WELLPATH IDENTIFICATION			
Operator	BONANZA CREEK OIL COMPANY	Slot	SLOT#02 PRONGHORN X-D-29HNC (1240'FSL & 230'FEL,SEC.29)
Area	COLORADO	Well	PRONGHORN X-D-29HNC
Field	WELD COUNTY	Wellbore	PRONGHORN X-D-29HNC PWB
Facility	SEC.29-T5N-R61W		

WELLPATH DATA (117 stations) † = interpolated/extrapolated station										
MD [ft]	Inclination [°]	Azimuth [°]	TVD [ft]	Vert Sect [ft]	North [ft]	East [ft]	Latitude	Longitude	DLS [°/100ft]	Comments
8117.00†	90.000	269.388	6135.99	1987.49	63.94	-1987.03	40°22'05.323"N	104°13'53.583"W	0.00	
8217.00†	90.000	269.388	6135.99	2087.47	62.87	-2087.02	40°22'05.312"N	104°13'54.875"W	0.00	
8317.00†	90.000	269.388	6135.99	2187.45	61.80	-2187.02	40°22'05.302"N	104°13'56.167"W	0.00	
8417.00†	90.000	269.388	6135.99	2287.43	60.74	-2287.01	40°22'05.291"N	104°13'57.459"W	0.00	
8517.00†	90.000	269.388	6135.99	2387.41	59.67	-2387.01	40°22'05.280"N	104°13'58.750"W	0.00	
8617.00†	90.000	269.388	6135.99	2487.40	58.60	-2487.00	40°22'05.270"N	104°14'00.042"W	0.00	
8717.00†	90.000	269.388	6135.99	2587.38	57.53	-2587.00	40°22'05.259"N	104°14'01.334"W	0.00	
8817.00†	90.000	269.388	6135.99	2687.36	56.47	-2686.99	40°22'05.249"N	104°14'02.626"W	0.00	
8917.00†	90.000	269.388	6135.99	2787.34	55.40	-2786.98	40°22'05.238"N	104°14'03.918"W	0.00	
9017.00†	90.000	269.388	6135.99	2887.33	54.33	-2886.98	40°22'05.227"N	104°14'05.210"W	0.00	
9117.00†	90.000	269.388	6135.99	2987.31	53.26	-2986.97	40°22'05.217"N	104°14'06.502"W	0.00	
9217.00†	90.000	269.388	6135.99	3087.29	52.20	-3086.97	40°22'05.206"N	104°14'07.793"W	0.00	
9317.00†	90.000	269.388	6135.99	3187.27	51.13	-3186.96	40°22'05.195"N	104°14'09.085"W	0.00	
9417.00†	90.000	269.388	6136.00	3287.26	50.06	-3286.96	40°22'05.185"N	104°14'10.377"W	0.00	
9517.00†	90.000	269.388	6136.00	3387.24	49.00	-3386.95	40°22'05.174"N	104°14'11.669"W	0.00	
9617.00†	90.000	269.388	6136.00	3487.22	47.93	-3486.95	40°22'05.163"N	104°14'12.961"W	0.00	
9717.00†	90.000	269.388	6136.00	3587.20	46.86	-3586.94	40°22'05.152"N	104°14'14.253"W	0.00	
9817.00†	90.000	269.388	6136.00	3687.18	45.79	-3686.93	40°22'05.142"N	104°14'15.545"W	0.00	
9917.00†	90.000	269.388	6136.00	3787.17	44.73	-3786.93	40°22'05.131"N	104°14'16.836"W	0.00	
10017.00†	90.000	269.388	6136.00	3887.15	43.66	-3886.92	40°22'05.120"N	104°14'18.128"W	0.00	
10117.00†	90.000	269.388	6136.00	3987.13	42.59	-3986.92	40°22'05.110"N	104°14'19.420"W	0.00	
10217.00†	90.000	269.388	6136.00	4087.11	41.52	-4086.91	40°22'05.099"N	104°14'20.712"W	0.00	
10317.00†	90.000	269.388	6136.00	4187.10	40.46	-4186.91	40°22'05.088"N	104°14'22.004"W	0.00	
10417.00†	90.000	269.388	6136.00	4287.08	39.39	-4286.90	40°22'05.078"N	104°14'23.296"W	0.00	
10517.00†	90.000	269.388	6136.00	4387.06	38.32	-4386.89	40°22'05.067"N	104°14'24.587"W	0.00	
10617.00†	90.000	269.388	6136.00	4487.04	37.26	-4486.89	40°22'05.056"N	104°14'25.879"W	0.00	
10655.45	90.000	269.388	6136.00 <sup>1</sup>	4525.48	36.85	-4525.33	40°22'05.052"N	104°14'26.376"W	0.00	End of Tangent





# Planned Wellpath Report

## PRONGHORN X-D-29HNC (REV-A.0) PWP

Page 6 of 7



### REFERENCE WELLPATH IDENTIFICATION

Operator	BONANZA CREEK OIL COMPANY	Slot	SLOT#02 PRONGHORN X-D-29HNC (1240'FSL & 230'FEL,SEC.29)
Area	COLORADO	Well	PRONGHORN X-D-29HNC
Field	WELD COUNTY	Wellbore	PRONGHORN X-D-29HNC PWB
Facility	SEC.29-T5N-R61W		

### HOLE & CASING SECTIONS -

Ref Wellbore: PRONGHORN X-D-29HNC PWB Ref Wellpath: PRONGHORN X-D-29HNC (REV-A.0) PWP

String/Diameter	Start MD [ft]	End MD [ft]	Interval [ft]	Start TVD [ft]	End TVD [ft]	Start N/S [ft]	Start E/W [ft]	End N/S [ft]	End E/W [ft]
7in Casing Intermediate	17.00	6501.49	6484.49	17.00	6135.98	0.00	0.00	81.18	-371.61
4.5in Casing Production	17.00	10655.00	10638.00	17.00	6136.00	0.00	0.00	36.85	-4524.89

### TARGETS

Name	MD [ft]	TVD [ft]	North [ft]	East [ft]	Grid East [US ft]	Grid North [US ft]	Latitude	Longitude	Shape
PRONGHORN 44-14-29HNB SECTION 29		0.00	0.00	-19.51	3355398.33	1379448.09	40°22'04.692"N	104°13'28.164"W	polygon
PRONGHORN 44-14-29HNB HARDLINES (460'SETBACK)		6054.00	0.00	-19.51	3355398.33	1379448.09	40°22'04.692"N	104°13'28.164"W	polygon
1) PRONGHORN X-D-29HNC BHL REV-1 From Plat (470'FWL & 1294'FSL,SEC.29)	10655.45	6136.00	36.85	-4525.33	3350892.63	1379420.12	40°22'05.052"N	104°14'26.376"W	point
PRONGHORN X-D-29HNC TARGET		6136.00	87.44	-300.95	3355115.67	1379531.47	40°22'05.556"N	104°13'31.800"W	point
Ex.Campbell#1 200'R		6780.00	1988.10	-1739.78	3353649.71	1381411.16	40°22'24.337"N	104°13'50.390"W	circle
Ex.STATE CRAZY HORSE #1 200'R		7015.00	629.17	-653.15	3354755.73	1380068.06	40°22'10.909"N	104°13'36.350"W	circle

### SURVEY PROGRAM - Ref Wellbore: PRONGHORN X-D-29HNC PWB Ref Wellpath: PRONGHORN X-D-29HNC (REV-A.0) PWP

Start MD [ft]	End MD [ft]	Positional Uncertainty Model	Log Name/Comment	Wellbore
17.00	10655.45	NaviTrak (Standard)		PRONGHORN X-D-29HNC PWB



**Planned Wellpath Report**  
**PRONGHORN X-D-29HNC (REV-A.0) PWP**  
Page 7 of 7



REFERENCE WELLPATH IDENTIFICATION			
Operator	BONANZA CREEK OIL COMPANY	Slot	SLOT#02 PRONGHORN X-D-29HNC (1240'FSL & 230'FEL,SEC.29)
Area	COLORADO	Well	PRONGHORN X-D-29HNC
Field	WELD COUNTY	Wellbore	PRONGHORN X-D-29HNC PWB
Facility	SEC.29-T5N-R61W		

DESIGN COMMENTS				
MD [ft]	Inclination [°]	Azimuth [°]	TVD [ft]	Comment
17.00	0.000	67.869	17.00	Tie On
1200.00	0.000	67.869	1200.00	End of Tangent
2000.00	16.000	67.869	1989.64	End of Build
2036.81	16.000	67.869	2025.03	End of Tangent
2836.81	0.000	269.389	2814.67	End of Drop
5613.31	0.000	269.389	5591.17	End of Tangent
6249.68	70.000	269.389	6080.63	End of Build
6319.68	70.000	269.389	6104.57	End of Tangent
6501.49	90.000	269.388	6135.98	End of 3D Arc
10655.45	90.000	269.388	6136.00	End of Tangent