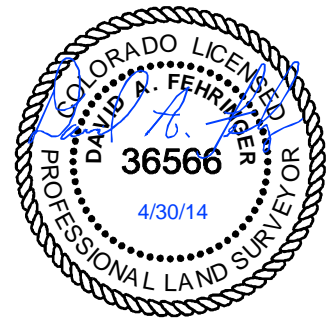
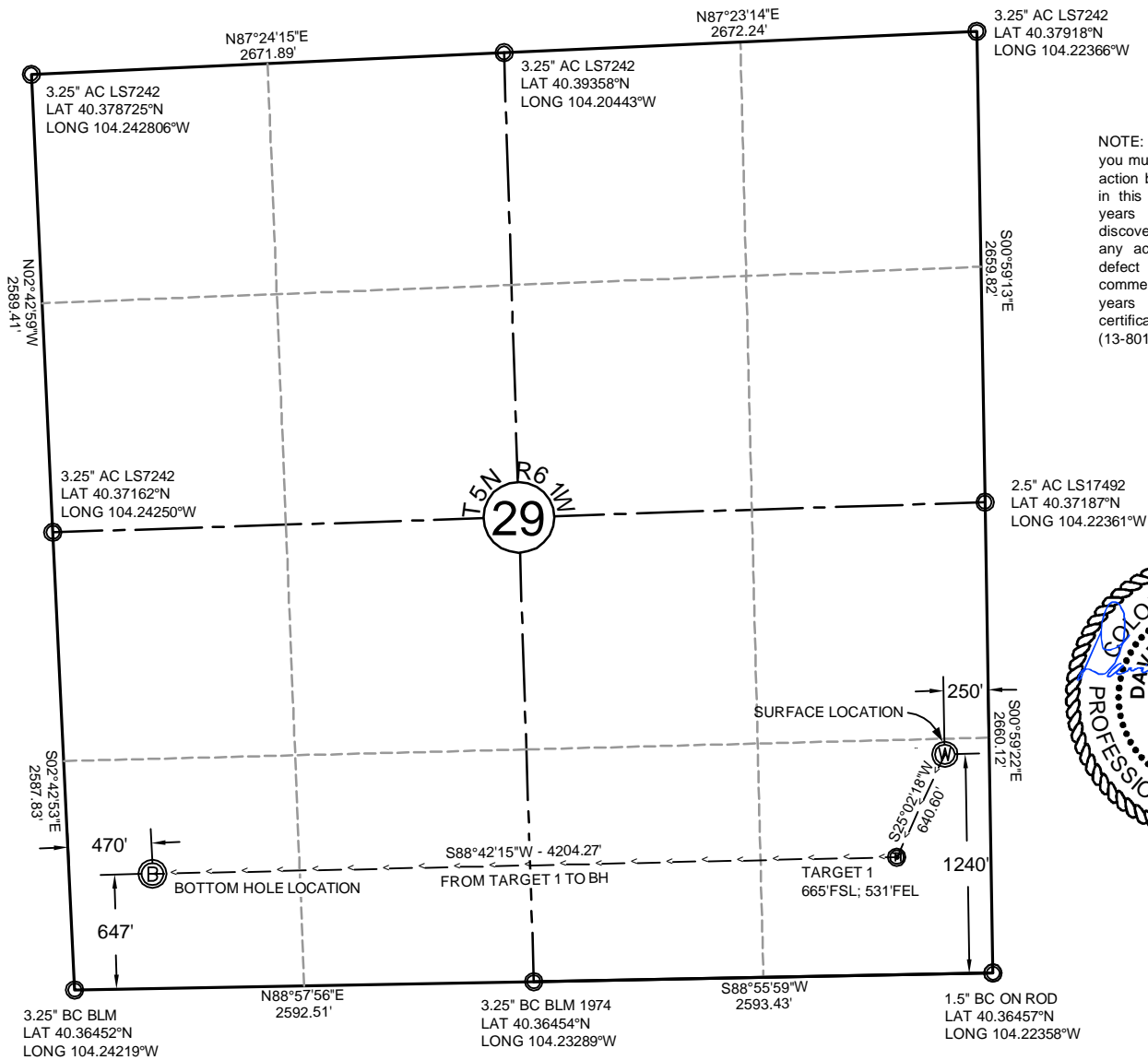


C:\FES PROJECTS\1319-01_BONANZA\5N-61W.dwg\CERT 5-61.dwg
SAVED DATE 2014-06-10 22:37



NOTES:

- All bearings are GRID based upon the Colorado State Plane Coordinate System, North Zone, NAD83(2011) derived from post-processed static GPS observations.
- Distances are at GROUND
- Vertical Datum is NAVD88 based upon GPS observations
- PDOP value equals 1.9.
- GPS operator: Dave Fehring.
- Undisturbed ground elevation at wellhead = 4601'
- All section lengths are measured distances
- Nearest Cultural Distances
 - Buildings: 1960'+/-
 - Building Unit: 5280'+/-
 - High Occupancy Building Unit: 5280'+
 - Designated Outside Activity Area: 5280'+
 - Public Road: 260'+/-
 - Above Ground Utility: 5280'+
 - Railroad: 5280'+
 - Property Line: 1417'

CERTIFICATE OF SURVEYOR

I, David A. Fehring of Lander, Wyoming hereby certify that this well location certificate was prepared from notes taken during an actual survey on APRIL 14, 2014; and that it correctly shows the drilling location of BONANZA CREEK ENERGY, INC., STATE PRONGHORN 44-14-29HNB as staked during said survey. This map does not represent a boundary survey or an improvement location plat and should not be used for the establishment of boundary lines.

SURFACE LOCATION: (NAD83)
GEODETIC COORDINATES
LAT 40.36797°
LONG 104.22449°

STATE PLANE (CO-N NAD83)
N=1,379,449 ft
E=3,355,399 ft

TARGET #1: (NAD83)
GEODETIC COORDINATES
LAT 40.36639°
LONG 104.22549°

STATE PLANE (CO-N NAD83)
N=1,378,868 ft
E=3,355,128 ft

BOTTOM HOLE LOCATION:
GEODETIC COORDINATES
LAT 40.36629°
LONG 104.24058°

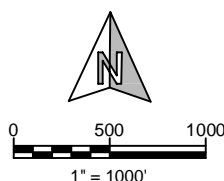
STATE PLANE (CO-N NAD83)
N=1,378,773 ft
E=3,350,925 ft

SHEET NO:

1 of 1



Drawn By: DAF
Checked By: JS
Date: 4/30/14
Revision: 2
Date: 6/10/14
Explanation: modify distance to county road



WELL LOCATION CERTIFICATE

STATE PRONGHORN 44-14-29HNB
1240' FSL, 250' FEL
SE $\frac{1}{4}$ SE $\frac{1}{4}$, SECTION 29,
T.5N., R.61W., 6th PM
WELD COUNTY, COLORADO



410 17th Street
Denver, CO 80202
(720) 440-6100