

BONANZA CREEK OIL COMPANY

Location: COLORADO Slot: SLOT#01 PRONGHORN 44-14-29HNB (1240'FSL & 250'FEL,SEC.29)
Field: WELD COUNTY Well: PRONGHORN 44-14-29HNB
Facility: SEC.29-T5N-R61W Wellbore: PRONGHORN 44-14-29HNB PWB

Plot reference wellpath is PRONGHORN 44-14-29HNB (REV-A.0) PWP

True vertical depths are referenced to RIG (RKB)	Grid System: NAD83 / Lambert Colorado SP, Northern Zone (501), US feet
Measured depths are referenced to RIG (RKB)	North Reference: True north
RIG (RKB) to Mean Sea Level: 4619 feet	Scale: True distance
Mean Sea Level to Mud line (At Slot: SLOT#01 PRONGHORN 44-14-29HNB (1240'FSL & 250'FEL,SEC.29)): 0 feet	Depths are in feet
Coordinates are in feet referenced to Slot	Created by: guenaler on 5/9/2014

Location Information

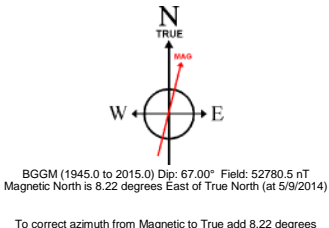
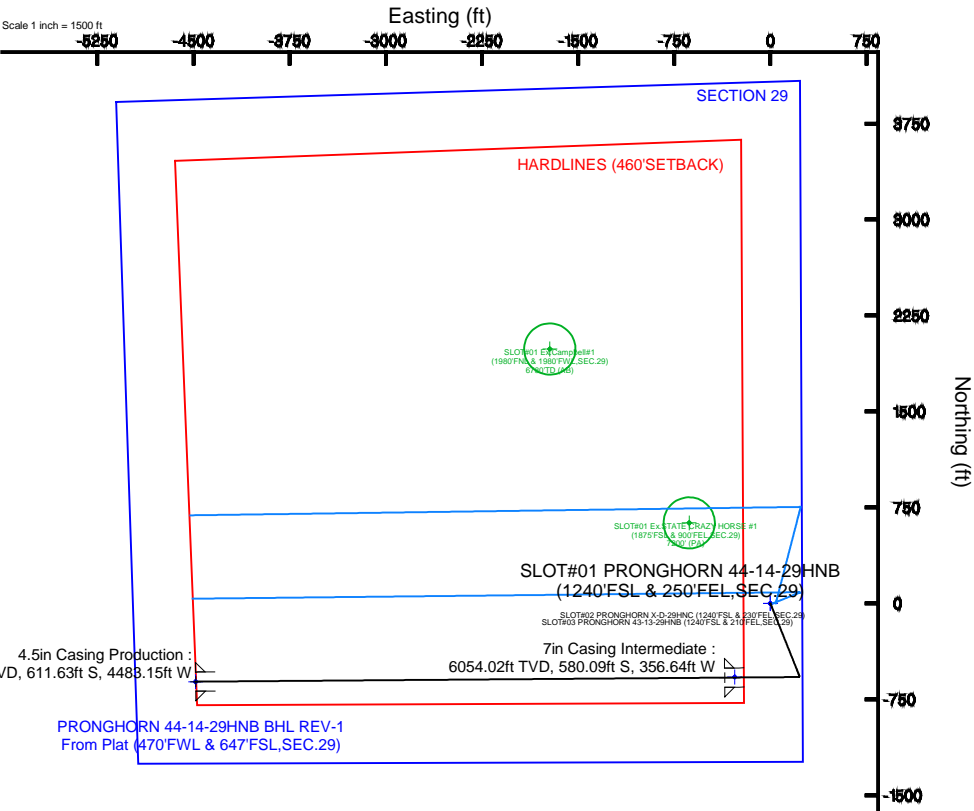
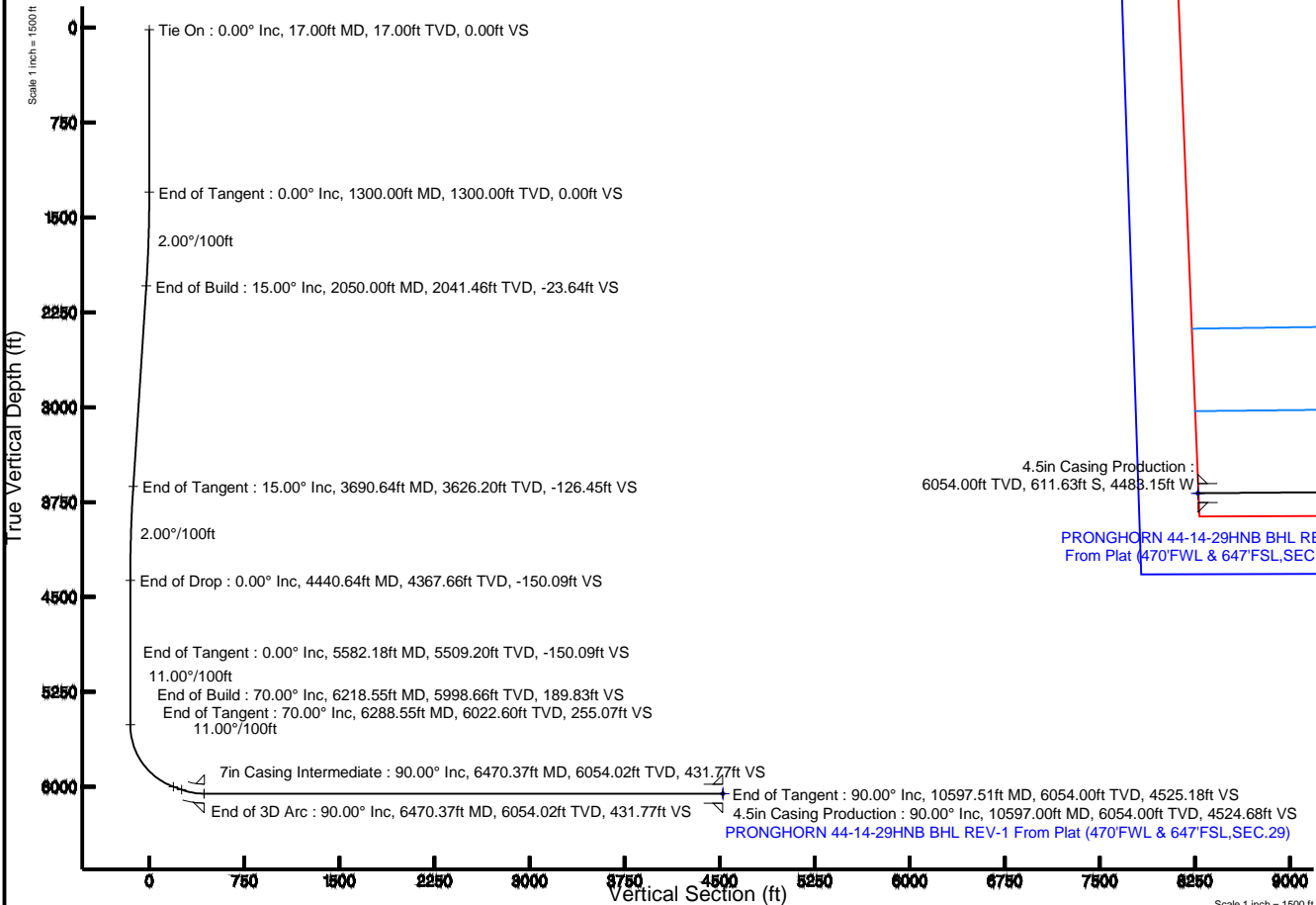
Facility Name	Grid East (US ft)	Grid North (US ft)	Latitude	Longitude
SEC.29-T5N-R61W	3355398.328	1379448.092	40°22'04.692"N	104°13'28.164"W
Slot	Local N (ft)	Local E (ft)	Grid East (US ft)	Grid North (US ft)
SLOT#01 PRONGHORN 44-14-29HNB (1240'FSL & 250'FEL,SEC.29)	0.00	0.00	3355398.328	1379448.092
RIG (RKB) to Mud line (At Slot: SLOT#01 PRONGHORN 44-14-29HNB (1240'FSL & 250'FEL,SEC.29))				4619ft
Mean Sea Level to Mud line (At Slot: SLOT#01 PRONGHORN 44-14-29HNB (1240'FSL & 250'FEL,SEC.29))				0ft
RIG (RKB) to Mean Sea Level				4619ft

Well Profile Data

Design Comment	MD (ft)	Inc (°)	Az (°)	TVD (ft)	Local N (ft)	Local E (ft)	DLS (°/100ft)	VS (ft)
Tie On	17.00	0.000	158.220	17.00	0.00	0.00	0.00	0.00
End of Tangent	1300.00	0.000	158.220	1300.00	0.00	0.00	0.00	0.00
End of Build	2050.00	15.000	158.220	2041.46	-90.65	36.22	2.00	-23.64
End of Tangent	3690.64	15.000	158.220	3626.20	-484.96	193.78	0.00	-126.45
End of Drop	4440.64	0.000	269.562	4367.66	-575.61	230.00	2.00	-150.09
End of Tangent	5582.18	0.000	269.562	5509.20	-575.61	230.00	0.00	-150.09
End of Build	6218.55	70.000	269.562	5998.66	-578.23	-112.71	11.00	189.83
End of Tangent	6288.55	70.000	269.562	6022.60	-578.73	-178.49	0.00	255.07
End of 3D Arc	6470.37	90.000	269.562	6054.02	-580.09	-356.63	11.00	431.77
End of Tangent	10597.51	90.000	269.562	6054.00	-611.63	-4483.65	0.00	4525.18

Survey Program

Start MD (ft)	End MD (ft)	Tool	Model	Log Name/Comment	Wellbore
17.00	10597.51	NavitTrak	NavitTrak (Standard)		PRONGHORN 44-14-29HNB PWB





Planned Wellpath Report

PRONGHORN 44-14-29HNB (REV-A.0) PWP

Page 1 of 7



REFERENCE WELLPATH IDENTIFICATION

Operator	BONANZA CREEK OIL COMPANY	Slot	SLOT#01 PRONGHORN 44-14-29HNB (1240'FSL & 250'FEL,SEC.29)
Area	COLORADO	Well	PRONGHORN 44-14-29HNB
Field	WELD COUNTY	Wellbore	PRONGHORN 44-14-29HNB PWB
Facility	SEC.29-T5N-R61W		

REPORT SETUP INFORMATION

Projection System	NAD83 / Lambert Colorado SP, Northern Zone (501), US feet	Software System	WellArchitect® 4.0.0
North Reference	True	User	Guenaler
Scale	0.999959	Report Generated	5/9/2014 at 5:15:39 PM
Convergence at slot	n/a	Database/Source file	WA_Denver/PRONGHORN_44-14-29HNB_PWB.xml

WELLPATH LOCATION

	Local coordinates		Grid coordinates		Geographic coordinates	
	North[ft]	East[ft]	Easting[US ft]	Northing[US ft]	Latitude	Longitude
Slot Location	0.00	0.00	3355398.33	1379448.09	40°22'04.692"N	104°13'28.164"W
Facility Reference Pt			3355398.33	1379448.09	40°22'04.692"N	104°13'28.164"W
Field Reference Pt			3327718.19	1377782.99	40°21'52.020"N	104°19'26.040"W

WELLPATH DATUM

Calculation method	Minimum curvature	RIG (RKB) to Facility Vertical Datum	4619.00ft
Horizontal Reference Pt	Slot	RIG (RKB) to Mean Sea Level	4619.00ft
Vertical Reference Pt	RIG (RKB)	RIG (RKB) to Mud Line at Slot (SLOT#01 PRONGHORN 44-14-29HNB (1240'FSL & 250'FEL,SEC.29))	4619.00ft
MD Reference Pt	RIG (RKB)	Section Origin	N 0.00, E 0.00 ft
Field Vertical Reference	Mean Sea Level	Section Azimuth	262.23°



Planned Wellpath Report

PRONGHORN 44-14-29HNB (REV-A.0) PWP

Page 2 of 7



REFERENCE WELLPATH IDENTIFICATION

Operator	BONANZA CREEK OIL COMPANY	Slot	SLOT#01 PRONGHORN 44-14-29HNB (1240'FSL & 250'FEL,SEC.29)
Area	COLORADO	Well	PRONGHORN 44-14-29HNB
Field	WELD COUNTY	Wellbore	PRONGHORN 44-14-29HNB PWB
Facility	SEC.29-T5N-R61W		

WELLPATH DATA (116 stations) † = interpolated/extrapolated station

MD [ft]	Inclination [°]	Azimuth [°]	TVD [ft]	Vert Sect [ft]	North [ft]	East [ft]	Latitude	Longitude	DLS [°/100ft]	Comments
0.00†	0.000	158.220	0.00	0.00	0.00	0.00	40°22'04.692"N	104°13'28.164"W	0.00	
17.00	0.000	158.220	17.00	0.00	0.00	0.00	40°22'04.692"N	104°13'28.164"W	0.00	Tie On
117.00†	0.000	158.220	117.00	0.00	0.00	0.00	40°22'04.692"N	104°13'28.164"W	0.00	
217.00†	0.000	158.220	217.00	0.00	0.00	0.00	40°22'04.692"N	104°13'28.164"W	0.00	
317.00†	0.000	158.220	317.00	0.00	0.00	0.00	40°22'04.692"N	104°13'28.164"W	0.00	
417.00†	0.000	158.220	417.00	0.00	0.00	0.00	40°22'04.692"N	104°13'28.164"W	0.00	
517.00†	0.000	158.220	517.00	0.00	0.00	0.00	40°22'04.692"N	104°13'28.164"W	0.00	
617.00†	0.000	158.220	617.00	0.00	0.00	0.00	40°22'04.692"N	104°13'28.164"W	0.00	
717.00†	0.000	158.220	717.00	0.00	0.00	0.00	40°22'04.692"N	104°13'28.164"W	0.00	
817.00†	0.000	158.220	817.00	0.00	0.00	0.00	40°22'04.692"N	104°13'28.164"W	0.00	
917.00†	0.000	158.220	917.00	0.00	0.00	0.00	40°22'04.692"N	104°13'28.164"W	0.00	
1017.00†	0.000	158.220	1017.00	0.00	0.00	0.00	40°22'04.692"N	104°13'28.164"W	0.00	
1117.00†	0.000	158.220	1117.00	0.00	0.00	0.00	40°22'04.692"N	104°13'28.164"W	0.00	
1217.00†	0.000	158.220	1217.00	0.00	0.00	0.00	40°22'04.692"N	104°13'28.164"W	0.00	
1300.00	0.000	158.220	1300.00	0.00	0.00	0.00	40°22'04.692"N	104°13'28.164"W	0.00	End of Tangent
1317.00†	0.340	158.220	1317.00	-0.01	-0.05	0.02	40°22'04.692"N	104°13'28.164"W	2.00	
1417.00†	2.340	158.220	1416.97	-0.58	-2.22	0.89	40°22'04.670"N	104°13'28.153"W	2.00	
1517.00†	4.340	158.220	1516.79	-1.99	-7.63	3.05	40°22'04.617"N	104°13'28.125"W	2.00	
1617.00†	6.340	158.220	1616.35	-4.24	-16.27	6.50	40°22'04.531"N	104°13'28.080"W	2.00	
1717.00†	8.340	158.220	1715.53	-7.34	-28.13	11.24	40°22'04.414"N	104°13'28.019"W	2.00	
1817.00†	10.340	158.220	1814.20	-11.27	-43.20	17.26	40°22'04.265"N	104°13'27.941"W	2.00	
1917.00†	12.340	158.220	1912.24	-16.03	-61.46	24.56	40°22'04.085"N	104°13'27.847"W	2.00	
2017.00†	14.340	158.220	2009.54	-21.61	-82.89	33.12	40°22'03.873"N	104°13'27.736"W	2.00	
2050.00	15.000	158.220	2041.46	-23.64	-90.65	36.22	40°22'03.796"N	104°13'27.696"W	2.00	End of Build
2117.00†	15.000	158.220	2106.18	-27.83	-106.75	42.65	40°22'03.637"N	104°13'27.613"W	0.00	
2217.00†	15.000	158.220	2202.77	-34.10	-130.78	52.26	40°22'03.400"N	104°13'27.489"W	0.00	
2317.00†	15.000	158.220	2299.36	-40.37	-154.82	61.86	40°22'03.162"N	104°13'27.365"W	0.00	
2417.00†	15.000	158.220	2395.96	-46.64	-178.85	71.47	40°22'02.925"N	104°13'27.241"W	0.00	
2517.00†	15.000	158.220	2492.55	-52.90	-202.89	81.07	40°22'02.687"N	104°13'27.117"W	0.00	
2617.00†	15.000	158.220	2589.14	-59.17	-226.92	90.67	40°22'02.450"N	104°13'26.993"W	0.00	



Planned Wellpath Report

PRONGHORN 44-14-29HNB (REV-A.0) PWP

Page 3 of 7



REFERENCE WELLPATH IDENTIFICATION

Operator	BONANZA CREEK OIL COMPANY	Slot	SLOT#01 PRONGHORN 44-14-29HNB (1240'FSL & 250'FEL,SEC.29)
Area	COLORADO	Well	PRONGHORN 44-14-29HNB
Field	WELD COUNTY	Wellbore	PRONGHORN 44-14-29HNB PWB
Facility	SEC.29-T5N-R61W		

WELLPATH DATA (116 stations) † = interpolated/extrapolated station

MD [ft]	Inclination [°]	Azimuth [°]	TVD [ft]	Vert Sect [ft]	North [ft]	East [ft]	Latitude	Longitude	DLS [°/100ft]	Comments
2717.00†	15.000	158.220	2685.73	-65.44	-250.96	100.28	40°22'02.212"N	104°13'26.869"W	0.00	
2817.00†	15.000	158.220	2782.33	-71.70	-274.99	109.88	40°22'01.975"N	104°13'26.744"W	0.00	
2917.00†	15.000	158.220	2878.92	-77.97	-299.02	119.48	40°22'01.737"N	104°13'26.620"W	0.00	
3017.00†	15.000	158.220	2975.51	-84.24	-323.06	129.09	40°22'01.500"N	104°13'26.496"W	0.00	
3117.00†	15.000	158.220	3072.10	-90.50	-347.09	138.69	40°22'01.262"N	104°13'26.372"W	0.00	
3217.00†	15.000	158.220	3168.70	-96.77	-371.13	148.29	40°22'01.025"N	104°13'26.248"W	0.00	
3317.00†	15.000	158.220	3265.29	-103.04	-395.16	157.90	40°22'00.787"N	104°13'26.124"W	0.00	
3417.00†	15.000	158.220	3361.88	-109.30	-419.20	167.50	40°22'00.550"N	104°13'26.000"W	0.00	
3517.00†	15.000	158.220	3458.48	-115.57	-443.23	177.10	40°22'00.312"N	104°13'25.876"W	0.00	
3617.00†	15.000	158.220	3555.07	-121.84	-467.26	186.71	40°22'00.075"N	104°13'25.752"W	0.00	
3690.64	15.000	158.220	3626.20	-126.45	-484.96	193.78	40°21'59.900"N	104°13'25.661"W	0.00	End of Tangent
3717.00†	14.473	158.220	3651.69	-128.08	-491.19	196.27	40°21'59.838"N	104°13'25.628"W	2.00	
3817.00†	12.473	158.220	3748.93	-133.72	-512.82	204.91	40°21'59.624"N	104°13'25.517"W	2.00	
3917.00†	10.473	158.220	3846.93	-138.53	-531.29	212.29	40°21'59.442"N	104°13'25.421"W	2.00	
4017.00†	8.473	158.220	3945.56	-142.52	-546.58	218.40	40°21'59.291"N	104°13'25.343"W	2.00	
4117.00†	6.473	158.220	4044.71	-145.67	-558.65	223.22	40°21'59.172"N	104°13'25.280"W	2.00	
4217.00†	4.473	158.220	4144.25	-147.98	-567.51	226.76	40°21'59.084"N	104°13'25.234"W	2.00	
4317.00†	2.473	158.220	4244.06	-149.44	-573.13	229.01	40°21'59.028"N	104°13'25.205"W	2.00	
4417.00†	0.473	158.220	4344.02	-150.06	-575.52	229.96	40°21'59.005"N	104°13'25.193"W	2.00	
4440.64	0.000	269.562	4367.66	-150.09	-575.61	230.00	40°21'59.004"N	104°13'25.193"W	2.00	End of Drop
4517.00†	0.000	269.562	4444.02	-150.09	-575.61	230.00	40°21'59.004"N	104°13'25.193"W	0.00	
4617.00†	0.000	269.562	4544.02	-150.09	-575.61	230.00	40°21'59.004"N	104°13'25.193"W	0.00	
4717.00†	0.000	269.562	4644.02	-150.09	-575.61	230.00	40°21'59.004"N	104°13'25.193"W	0.00	
4817.00†	0.000	269.562	4744.02	-150.09	-575.61	230.00	40°21'59.004"N	104°13'25.193"W	0.00	
4917.00†	0.000	269.562	4844.02	-150.09	-575.61	230.00	40°21'59.004"N	104°13'25.193"W	0.00	
5017.00†	0.000	269.562	4944.02	-150.09	-575.61	230.00	40°21'59.004"N	104°13'25.193"W	0.00	
5117.00†	0.000	269.562	5044.02	-150.09	-575.61	230.00	40°21'59.004"N	104°13'25.193"W	0.00	
5217.00†	0.000	269.562	5144.02	-150.09	-575.61	230.00	40°21'59.004"N	104°13'25.193"W	0.00	
5317.00†	0.000	269.562	5244.02	-150.09	-575.61	230.00	40°21'59.004"N	104°13'25.193"W	0.00	
5417.00†	0.000	269.562	5344.02	-150.09	-575.61	230.00	40°21'59.004"N	104°13'25.193"W	0.00	



Planned Wellpath Report

PRONGHORN 44-14-29HNB (REV-A.0) PWP

Page 4 of 7



REFERENCE WELLPATH IDENTIFICATION

Operator	BONANZA CREEK OIL COMPANY	Slot	SLOT#01 PRONGHORN 44-14-29HNB (1240'FSL & 250'FEL,SEC.29)
Area	COLORADO	Well	PRONGHORN 44-14-29HNB
Field	WELD COUNTY	Wellbore	PRONGHORN 44-14-29HNB PWB
Facility	SEC.29-T5N-R61W		

WELLPATH DATA (116 stations) † = interpolated/extrapolated station

MD [ft]	Inclination [°]	Azimuth [°]	TVD [ft]	Vert Sect [ft]	North [ft]	East [ft]	Latitude	Longitude	DLS [°/100ft]	Comments
5517.00†	0.000	269.562	5444.02	-150.09	-575.61	230.00	40°21'59.004"N	104°13'25.193"W	0.00	
5582.18	0.000	269.562	5509.20	-150.09	-575.61	230.00	40°21'59.004"N	104°13'25.193"W	0.00	End of Tangent
5617.00†	3.830	269.562	5543.99	-148.93	-575.62	228.84	40°21'59.004"N	104°13'25.208"W	11.00	
5717.00†	14.830	269.562	5642.52	-132.88	-575.74	212.65	40°21'59.003"N	104°13'25.417"W	11.00	
5817.00†	25.830	269.562	5736.15	-98.47	-576.01	177.96	40°21'59.000"N	104°13'25.865"W	11.00	
5917.00†	36.830	269.562	5821.43	-46.98	-576.40	126.05	40°21'58.996"N	104°13'26.536"W	11.00	
6017.00†	47.830	269.562	5895.25	19.70	-576.92	58.81	40°21'58.991"N	104°13'27.404"W	11.00	
6117.00†	58.830	269.562	5954.88	99.14	-577.53	-21.27	40°21'58.985"N	104°13'28.439"W	11.00	
6217.00†	69.830	269.562	5998.13	188.39	-578.22	-111.26	40°21'58.978"N	104°13'29.601"W	11.00	
6218.55	70.000	269.562	5998.66	189.83	-578.23	-112.71	40°21'58.978"N	104°13'29.620"W	11.00	End of Build
6288.55	70.000	269.562	6022.60	255.07	-578.73	-178.49	40°21'58.973"N	104°13'30.470"W	0.00	End of Tangent
6317.00†	73.130	269.562	6031.60	281.84	-578.94	-205.48	40°21'58.971"N	104°13'30.819"W	11.00	
6417.00†	84.130	269.562	6051.28	378.93	-579.69	-303.36	40°21'58.964"N	104°13'32.083"W	11.00	
6470.37	90.000	269.562	6054.02	431.77	-580.09	-356.63	40°21'58.960"N	104°13'32.771"W	11.00	End of 3D Arc
6517.00†	90.000	269.562	6054.02	478.02	-580.45	-403.27	40°21'58.956"N	104°13'33.374"W	0.00	
6617.00†	90.000	269.562	6054.02	577.20	-581.21	-503.26	40°21'58.949"N	104°13'34.666"W	0.00	
6717.00†	90.000	269.562	6054.01	676.39	-581.98	-603.26	40°21'58.941"N	104°13'35.957"W	0.00	
6817.00†	90.000	269.562	6054.01	775.57	-582.74	-703.26	40°21'58.933"N	104°13'37.249"W	0.00	
6917.00†	90.000	269.562	6054.01	874.75	-583.51	-803.25	40°21'58.926"N	104°13'38.541"W	0.00	
7017.00†	90.000	269.562	6054.01	973.93	-584.27	-903.25	40°21'58.918"N	104°13'39.833"W	0.00	
7117.00†	90.000	269.562	6054.01	1073.12	-585.04	-1003.25	40°21'58.911"N	104°13'41.125"W	0.00	
7217.00†	90.000	269.562	6054.01	1172.30	-585.80	-1103.25	40°21'58.903"N	104°13'42.417"W	0.00	
7317.00†	90.000	269.562	6054.01	1271.48	-586.56	-1203.24	40°21'58.895"N	104°13'43.709"W	0.00	
7417.00†	90.000	269.562	6054.01	1370.66	-587.33	-1303.24	40°21'58.888"N	104°13'45.000"W	0.00	
7517.00†	90.000	269.562	6054.01	1469.85	-588.09	-1403.24	40°21'58.880"N	104°13'46.292"W	0.00	
7617.00†	90.000	269.562	6054.01	1569.03	-588.86	-1503.23	40°21'58.873"N	104°13'47.584"W	0.00	
7717.00†	90.000	269.562	6054.01	1668.21	-589.62	-1603.23	40°21'58.865"N	104°13'48.876"W	0.00	
7817.00†	90.000	269.562	6054.01	1767.40	-590.39	-1703.23	40°21'58.857"N	104°13'50.168"W	0.00	
7917.00†	90.000	269.562	6054.01	1866.58	-591.15	-1803.22	40°21'58.850"N	104°13'51.460"W	0.00	
8017.00†	90.000	269.562	6054.01	1965.76	-591.91	-1903.22	40°21'58.842"N	104°13'52.752"W	0.00	



Planned Wellpath Report

PRONGHORN 44-14-29HNB (REV-A.0) PWP

Page 5 of 7



REFERENCE WELLPATH IDENTIFICATION

Operator	BONANZA CREEK OIL COMPANY	Slot	SLOT#01 PRONGHORN 44-14-29HNB (1240'FSL & 250'FEL,SEC.29)
Area	COLORADO	Well	PRONGHORN 44-14-29HNB
Field	WELD COUNTY	Wellbore	PRONGHORN 44-14-29HNB PWB
Facility	SEC.29-T5N-R61W		

WELLPATH DATA (116 stations) † = interpolated/extrapolated station

MD [ft]	Inclination [°]	Azimuth [°]	TVD [ft]	Vert Sect [ft]	North [ft]	East [ft]	Latitude	Longitude	DLS [°/100ft]	Comments
8117.00†	90.000	269.562	6054.01	2064.94	-592.68	-2003.22	40°21'58.835"N	104°13'54.043"W	0.00	
8217.00†	90.000	269.562	6054.01	2164.13	-593.44	-2103.22	40°21'58.827"N	104°13'55.335"W	0.00	
8317.00†	90.000	269.562	6054.01	2263.31	-594.21	-2203.21	40°21'58.819"N	104°13'56.627"W	0.00	
8417.00†	90.000	269.562	6054.01	2362.49	-594.97	-2303.21	40°21'58.812"N	104°13'57.919"W	0.00	
8517.00†	90.000	269.562	6054.01	2461.68	-595.73	-2403.21	40°21'58.804"N	104°13'59.211"W	0.00	
8617.00†	90.000	269.562	6054.01	2560.86	-596.50	-2503.20	40°21'58.796"N	104°14'00.503"W	0.00	
8717.00†	90.000	269.562	6054.01	2660.04	-597.26	-2603.20	40°21'58.789"N	104°14'01.795"W	0.00	
8817.00†	90.000	269.562	6054.01	2759.22	-598.03	-2703.20	40°21'58.781"N	104°14'03.086"W	0.00	
8917.00†	90.000	269.562	6054.01	2858.41	-598.79	-2803.20	40°21'58.773"N	104°14'04.378"W	0.00	
9017.00†	90.000	269.562	6054.01	2957.59	-599.56	-2903.19	40°21'58.766"N	104°14'05.670"W	0.00	
9117.00†	90.000	269.562	6054.01	3056.77	-600.32	-3003.19	40°21'58.758"N	104°14'06.962"W	0.00	
9217.00†	90.000	269.562	6054.01	3155.95	-601.08	-3103.19	40°21'58.750"N	104°14'08.254"W	0.00	
9317.00†	90.000	269.562	6054.00	3255.14	-601.85	-3203.18	40°21'58.743"N	104°14'09.546"W	0.00	
9417.00†	90.000	269.562	6054.00	3354.32	-602.61	-3303.18	40°21'58.735"N	104°14'10.838"W	0.00	
9517.00†	90.000	269.562	6054.00	3453.50	-603.38	-3403.18	40°21'58.727"N	104°14'12.129"W	0.00	
9617.00†	90.000	269.562	6054.00	3552.69	-604.14	-3503.18	40°21'58.720"N	104°14'13.421"W	0.00	
9717.00†	90.000	269.562	6054.00	3651.87	-604.91	-3603.17	40°21'58.712"N	104°14'14.713"W	0.00	
9817.00†	90.000	269.562	6054.00	3751.05	-605.67	-3703.17	40°21'58.704"N	104°14'16.005"W	0.00	
9917.00†	90.000	269.562	6054.00	3850.23	-606.43	-3803.17	40°21'58.697"N	104°14'17.297"W	0.00	
10017.00†	90.000	269.562	6054.00	3949.42	-607.20	-3903.16	40°21'58.689"N	104°14'18.589"W	0.00	
10117.00†	90.000	269.562	6054.00	4048.60	-607.96	-4003.16	40°21'58.681"N	104°14'19.881"W	0.00	
10217.00†	90.000	269.562	6054.00	4147.78	-608.73	-4103.16	40°21'58.673"N	104°14'21.172"W	0.00	
10317.00†	90.000	269.562	6054.00	4246.96	-609.49	-4203.15	40°21'58.666"N	104°14'22.464"W	0.00	
10417.00†	90.000	269.562	6054.00	4346.15	-610.25	-4303.15	40°21'58.658"N	104°14'23.756"W	0.00	
10517.00†	90.000	269.562	6054.00	4445.33	-611.02	-4403.15	40°21'58.650"N	104°14'25.048"W	0.00	
10597.51	90.000	269.562	6054.00 ¹	4525.18	-611.63	-4483.65	40°21'58.644"N	104°14'26.088"W	0.00	End of Tangent



Planned Wellpath Report

PRONGHORN 44-14-29HNB (REV-A.0) PWP

Page 6 of 7



REFERENCE WELLPATH IDENTIFICATION

Operator	BONANZA CREEK OIL COMPANY	Slot	SLOT#01 PRONGHORN 44-14-29HNB (1240'FSL & 250'FEL,SEC.29)
Area	COLORADO	Well	PRONGHORN 44-14-29HNB
Field	WELD COUNTY	Wellbore	PRONGHORN 44-14-29HNB PWB
Facility	SEC.29-T5N-R61W		

HOLE & CASING SECTIONS -

Ref Wellbore: PRONGHORN 44-14-29HNB PWB Ref Wellpath: PRONGHORN 44-14-29HNB (REV-A.0) PWP

String/Diameter	Start MD [ft]	End MD [ft]	Interval [ft]	Start TVD [ft]	End TVD [ft]	Start N/S [ft]	Start E/W [ft]	End N/S [ft]	End E/W [ft]
7in Casing Intermediate	17.00	6470.37	6453.37	17.00	6054.02	0.00	0.00	-580.09	-356.64
4.5in Casing Production	17.00	10597.00	10580.00	17.00	6054.00	0.00	0.00	-611.63	-4483.15

TARGETS

Name	MD [ft]	TVD [ft]	North [ft]	East [ft]	Grid East [US ft]	Grid North [US ft]	Latitude	Longitude	Shape
PRONGHORN 44-14-29HNB SECTION 29		0.00	0.00	0.00	3355398.33	1379448.09	40°22'04.692"N	104°13'28.164"W	polygon
1) PRONGHORN 44-14-29HNB BHL REV-1 From Plat (470'FWL & 647'FSL,SEC.29)	10597.51	6054.00	-611.63	-4483.65	3350924.13	1378772.06	40°21'58.644"N	104°14'26.088"W	point
PRONGHORN 44-14-29HNB HARDLINES (460'SETBACK)		6054.00	0.00	0.00	3355398.33	1379448.09	40°22'04.692"N	104°13'28.164"W	polygon
PRONGHORN 44-14-29HNB TARGET		6054.00	-575.61	-278.66	3355127.99	1378868.56	40°21'59.004"N	104°13'31.764"W	point
Ex.Campbell#1 200'R		6780.00	1988.10	-1720.27	3353649.71	1381411.16	40°22'24.337"N	104°13'50.390"W	circle
Ex.STATE CRAZY HORSE #1 200'R		7015.00	629.17	-633.64	3354755.73	1380068.06	40°22'10.909"N	104°13'36.350"W	circle

SURVEY PROGRAM - Ref Wellbore: PRONGHORN 44-14-29HNB PWB Ref Wellpath: PRONGHORN 44-14-29HNB (REV-A.0) PWP

Start MD [ft]	End MD [ft]	Positional Uncertainty Model	Log Name/Comment	Wellbore
17.00	10597.51	NaviTrak (Standard)		PRONGHORN 44-14-29HNB PWB



Planned Wellpath Report

PRONGHORN 44-14-29HNB (REV-A.0) PWP
Page 7 of 7



REFERENCE WELLPATH IDENTIFICATION			
Operator	BONANZA CREEK OIL COMPANY	Slot	SLOT#01 PRONGHORN 44-14-29HNB (1240'FSL & 250'FEL,SEC.29)
Area	COLORADO	Well	PRONGHORN 44-14-29HNB
Field	WELD COUNTY	Wellbore	PRONGHORN 44-14-29HNB PWB
Facility	SEC.29-T5N-R61W		

DESIGN COMMENTS				
MD [ft]	Inclination [°]	Azimuth [°]	TVD [ft]	Comment
17.00	0.000	158.220	17.00	Tie On
1300.00	0.000	158.220	1300.00	End of Tangent
2050.00	15.000	158.220	2041.46	End of Build
3690.64	15.000	158.220	3626.20	End of Tangent
4440.64	0.000	269.562	4367.66	End of Drop
5582.18	0.000	269.562	5509.20	End of Tangent
6218.55	70.000	269.562	5998.66	End of Build
6288.55	70.000	269.562	6022.60	End of Tangent
6470.37	90.000	269.562	6054.02	End of 3D Arc
10597.51	90.000	269.562	6054.00	End of Tangent