

# BONANZA CREEK OIL COMPANY

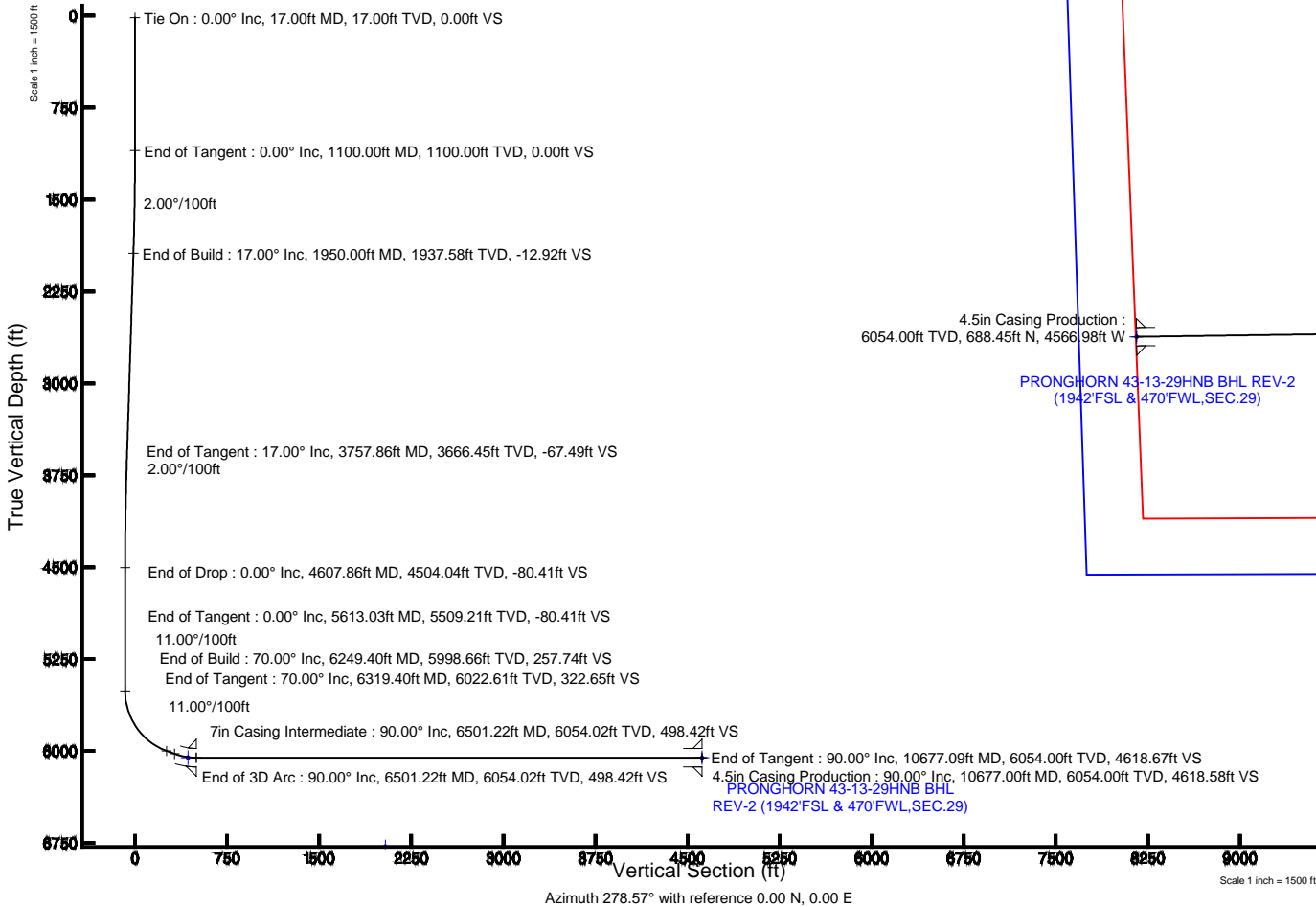
Location: COLORADO Slot: SLOT#03 PRONGHORN 43-13-29HNB (1240'FSL & 210'FEL,SEC.29)  
Field: WELD COUNTY Well: PRONGHORN 43-13-29HNB  
Facility: SEC.29-T5N-R61W Wellbore: PRONGHORN 43-13-29HNB PWB

Plot reference wellpath is PRONGHORN 43-13-29HNB (REV-A.0) PWP

True vertical depths are referenced to RIG (RKB)	Grid System: NAD83 / Lambert Colorado SP, Northern Zone (501), US feet
Measured depths are referenced to RIG (RKB)	North Reference: True north
RIG (RKB) to Mean Sea Level: 4619 feet	Scale: True distance
Mean Sea Level to Mud line (At Slot: SLOT#03 PRONGHORN 43-13-29HNB (1240'FSL & 210'FEL,SEC.29)) 0 feet	Depths are in feet
Coordinates are in feet referenced to Slot	Created by: guenaler on 5/9/2014

## Location Information

Facility Name		Grid East (US ft)	Grid North (US ft)	Latitude	Longitude
SEC.29-T5N-R61W		3355398.328	1379448.092	40°22'04.692"N	104°13'28.164"W
Slot	Local N (ft)	Local E (ft)	Grid East (US ft)	Grid North (US ft)	Latitude
SLOT#03 PRONGHORN 43-13-29HNB (1240'FSL & 210'FEL,SEC.29)	0.00	41.80	3355440.120	1379448.694	40°22'04.692"N
RIG (RKB) to Mud line (At Slot: SLOT#03 PRONGHORN 43-13-29HNB (1240'FSL & 210'FEL,SEC.29))	4619ft				
Mean Sea Level to Mud line (At Slot: SLOT#03 PRONGHORN 43-13-29HNB (1240'FSL & 210'FEL,SEC.29))	0ft				
RIG (RKB) to Mean Sea Level	4619ft				

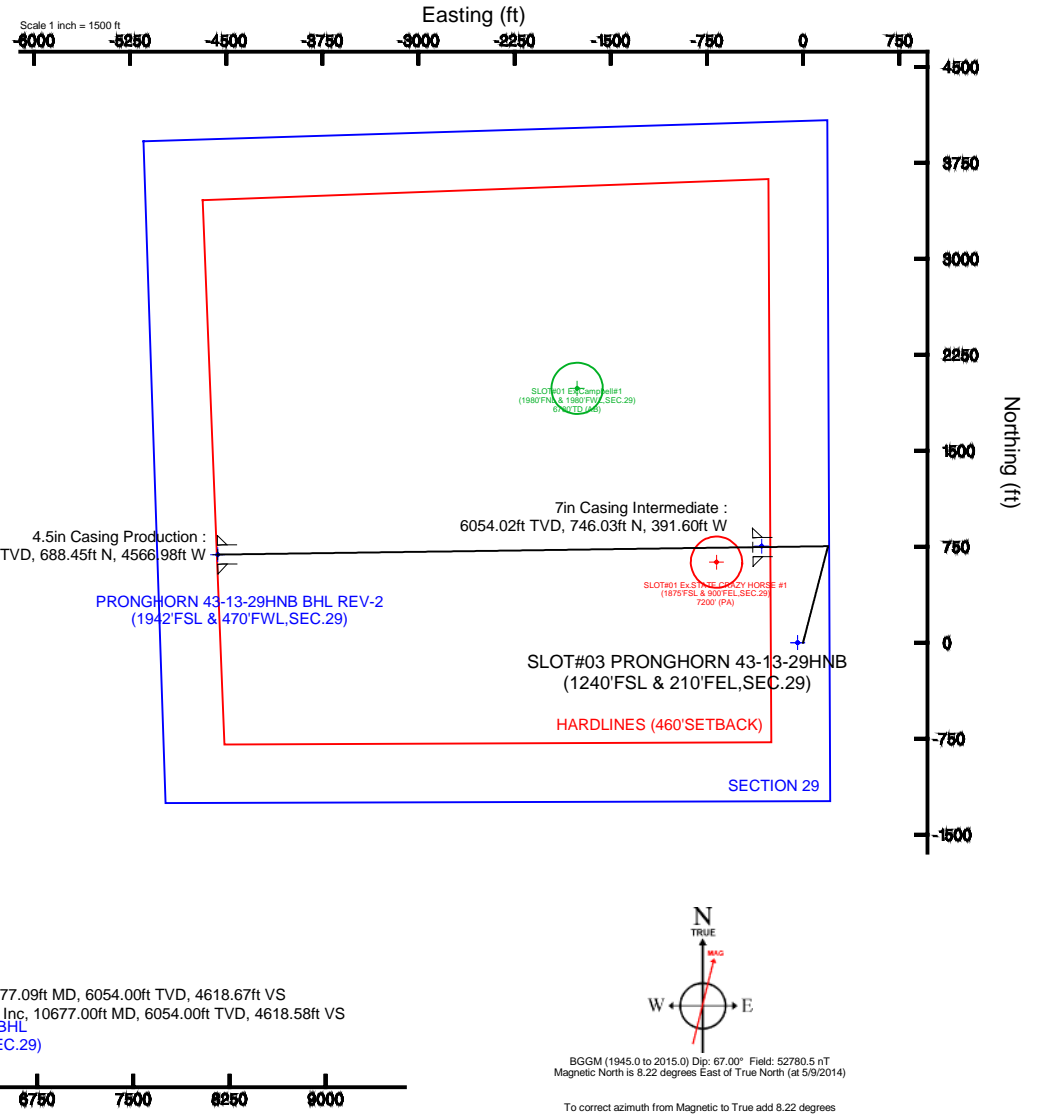


## Well Profile Data

Design Comment	MD (ft)	Inc (°)	Az (°)	TVD (ft)	Local N (ft)	Local E (ft)	DLS (°/100ft)	VS (ft)
Tie On	17.00	0.000	14.498	17.00	0.00	0.00	0.00	0.00
End of Tangent	1100.00	0.000	14.498	1100.00	0.00	0.00	0.00	0.00
End of Build	1950.00	17.000	14.498	1937.58	121.19	31.34	2.00	-12.92
End of Tangent	3757.86	17.000	14.498	3666.45	632.93	163.66	0.00	-67.49
End of Drop	4607.86	0.000	269.210	4504.04	754.12	195.00	2.00	-80.41
End of Tangent	5613.03	0.000	269.210	5509.21	754.12	195.00	0.00	-80.41
End of Build	6249.40	70.000	269.210	5998.66	749.39	-147.69	11.00	257.74
End of Tangent	6319.40	70.000	269.210	6022.61	748.49	-213.46	0.00	322.65
End of 3D Arc	6501.22	90.000	269.210	6054.02	746.03	-391.60	11.00	498.42
End of Tangent	10677.09	90.000	269.210	6054.00	688.45	-4567.07	0.00	4618.67

## Survey Program

Start MD (ft)	End MD (ft)	Tool	Model	Log Name/Comment	Wellbore
17.00	10800.00	NavTrak	NavTrak (Standard)		PRONGHORN 43-13-29HNB PWB





# Planned Wellpath Report

PRONGHORN 43-13-29HNB (REV-A.0) PWP

Page 1 of 7



## REFERENCE WELLPATH IDENTIFICATION

Operator	BONANZA CREEK OIL COMPANY	Slot	SLOT#03 PRONGHORN 43-13-29HNB (1240'FSL & 210'FEL,SEC.29)
Area	COLORADO	Well	PRONGHORN 43-13-29HNB
Field	WELD COUNTY	Wellbore	PRONGHORN 43-13-29HNB PWB
Facility	SEC.29-T5N-R61W		

## REPORT SETUP INFORMATION

Projection System	NAD83 / Lambert Colorado SP, Northern Zone (501), US feet	Software System	WellArchitect® 4.0.0
North Reference	True	User	Guenaler
Scale	0.999959	Report Generated	5/9/2014 at 5:43:33 PM
Convergence at slot	n/a	Database/Source file	WA_Denver/PRONGHORN_43-13-29HNB_PWB.xml

## WELLPATH LOCATION

	Local coordinates		Grid coordinates		Geographic coordinates	
	North[ft]	East[ft]	Easting[US ft]	Northing[US ft]	Latitude	Longitude
Slot Location	0.00	41.80	3355440.12	1379448.69	40°22'04.692"N	104°13'27.624"W
Facility Reference Pt			3355398.33	1379448.09	40°22'04.692"N	104°13'28.164"W
Field Reference Pt			3327718.19	1377782.99	40°21'52.020"N	104°19'26.040"W

## WELLPATH DATUM

Calculation method	Minimum curvature	RIG (RKB) to Facility Vertical Datum	4619.00ft
Horizontal Reference Pt	Slot	RIG (RKB) to Mean Sea Level	4619.00ft
Vertical Reference Pt	RIG (RKB)	RIG (RKB) to Mud Line at Slot (SLOT#03 PRONGHORN 43-13-29HNB (1240'FSL & 210'FEL,SEC.29))	4619.00ft
MD Reference Pt	RIG (RKB)	Section Origin	N 0.00, E 0.00 ft
Field Vertical Reference	Mean Sea Level	Section Azimuth	278.57°



# Planned Wellpath Report

PRONGHORN 43-13-29HNB (REV-A.0) PWP

Page 2 of 7



## REFERENCE WELLPATH IDENTIFICATION

Operator	BONANZA CREEK OIL COMPANY	Slot	SLOT#03 PRONGHORN 43-13-29HNB (1240'FSL & 210'FEL,SEC.29)
Area	COLORADO	Well	PRONGHORN 43-13-29HNB
Field	WELD COUNTY	Wellbore	PRONGHORN 43-13-29HNB PWB
Facility	SEC.29-T5N-R61W		

## WELLPATH DATA (117 stations) † = interpolated/extrapolated station

MD [ft]	Inclination [°]	Azimuth [°]	TVD [ft]	Vert Sect [ft]	North [ft]	East [ft]	Latitude	Longitude	DLS [°/100ft]	Comments
0.00†	0.000	14.498	0.00	0.00	0.00	0.00	40°22'04.692"N	104°13'27.624"W	0.00	
17.00	0.000	14.498	17.00	0.00	0.00	0.00	40°22'04.692"N	104°13'27.624"W	0.00	Tie On
117.00†	0.000	14.498	117.00	0.00	0.00	0.00	40°22'04.692"N	104°13'27.624"W	0.00	
217.00†	0.000	14.498	217.00	0.00	0.00	0.00	40°22'04.692"N	104°13'27.624"W	0.00	
317.00†	0.000	14.498	317.00	0.00	0.00	0.00	40°22'04.692"N	104°13'27.624"W	0.00	
417.00†	0.000	14.498	417.00	0.00	0.00	0.00	40°22'04.692"N	104°13'27.624"W	0.00	
517.00†	0.000	14.498	517.00	0.00	0.00	0.00	40°22'04.692"N	104°13'27.624"W	0.00	
617.00†	0.000	14.498	617.00	0.00	0.00	0.00	40°22'04.692"N	104°13'27.624"W	0.00	
717.00†	0.000	14.498	717.00	0.00	0.00	0.00	40°22'04.692"N	104°13'27.624"W	0.00	
817.00†	0.000	14.498	817.00	0.00	0.00	0.00	40°22'04.692"N	104°13'27.624"W	0.00	
917.00†	0.000	14.498	917.00	0.00	0.00	0.00	40°22'04.692"N	104°13'27.624"W	0.00	
1017.00†	0.000	14.498	1017.00	0.00	0.00	0.00	40°22'04.692"N	104°13'27.624"W	0.00	
1100.00	0.000	14.498	1100.00	0.00	0.00	0.00	40°22'04.692"N	104°13'27.624"W	0.00	End of Tangent
1117.00†	0.340	14.498	1117.00	-0.01	0.05	0.01	40°22'04.692"N	104°13'27.624"W	2.00	
1217.00†	2.340	14.498	1216.97	-0.25	2.31	0.60	40°22'04.715"N	104°13'27.616"W	2.00	
1317.00†	4.340	14.498	1316.79	-0.85	7.95	2.06	40°22'04.771"N	104°13'27.597"W	2.00	
1417.00†	6.340	14.498	1416.35	-1.81	16.96	4.39	40°22'04.860"N	104°13'27.567"W	2.00	
1517.00†	8.340	14.498	1515.53	-3.13	29.33	7.58	40°22'04.982"N	104°13'27.526"W	2.00	
1617.00†	10.340	14.498	1614.20	-4.80	45.04	11.65	40°22'05.137"N	104°13'27.474"W	2.00	
1717.00†	12.340	14.498	1712.24	-6.83	64.08	16.57	40°22'05.325"N	104°13'27.410"W	2.00	
1817.00†	14.340	14.498	1809.54	-9.21	86.42	22.35	40°22'05.546"N	104°13'27.335"W	2.00	
1917.00†	16.340	14.498	1905.97	-11.95	112.03	28.97	40°22'05.799"N	104°13'27.250"W	2.00	
1950.00	17.000	14.498	1937.58	-12.92	121.19	31.34	40°22'05.890"N	104°13'27.219"W	2.00	End of Build
2017.00†	17.000	14.498	2001.66	-14.95	140.16	36.24	40°22'06.077"N	104°13'27.156"W	0.00	
2117.00†	17.000	14.498	2097.29	-17.96	168.46	43.56	40°22'06.357"N	104°13'27.061"W	0.00	
2217.00†	17.000	14.498	2192.92	-20.98	196.77	50.88	40°22'06.636"N	104°13'26.967"W	0.00	
2317.00†	17.000	14.498	2288.55	-24.00	225.08	58.20	40°22'06.916"N	104°13'26.872"W	0.00	
2417.00†	17.000	14.498	2384.18	-27.02	253.38	65.52	40°22'07.196"N	104°13'26.778"W	0.00	
2517.00†	17.000	14.498	2479.81	-30.04	281.69	72.84	40°22'07.476"N	104°13'26.683"W	0.00	
2617.00†	17.000	14.498	2575.44	-33.06	309.99	80.16	40°22'07.755"N	104°13'26.588"W	0.00	



# Planned Wellpath Report

PRONGHORN 43-13-29HNB (REV-A.0) PWP

Page 3 of 7



## REFERENCE WELLPATH IDENTIFICATION

Operator	BONANZA CREEK OIL COMPANY	Slot	SLOT#03 PRONGHORN 43-13-29HNB (1240'FSL & 210'FEL,SEC.29)
Area	COLORADO	Well	PRONGHORN 43-13-29HNB
Field	WELD COUNTY	Wellbore	PRONGHORN 43-13-29HNB PWB
Facility	SEC.29-T5N-R61W		

## WELLPATH DATA (117 stations) † = interpolated/extrapolated station

MD [ft]	Inclination [°]	Azimuth [°]	TVD [ft]	Vert Sect [ft]	North [ft]	East [ft]	Latitude	Longitude	DLS [°/100ft]	Comments
2717.00†	17.000	14.498	2671.07	-36.07	338.30	87.48	40°22'08.035"N	104°13'26.494"W	0.00	
2817.00†	17.000	14.498	2766.70	-39.09	366.61	94.80	40°22'08.315"N	104°13'26.399"W	0.00	
2917.00†	17.000	14.498	2862.33	-42.11	394.91	102.12	40°22'08.594"N	104°13'26.305"W	0.00	
3017.00†	17.000	14.498	2957.96	-45.13	423.22	109.44	40°22'08.874"N	104°13'26.210"W	0.00	
3117.00†	17.000	14.498	3053.59	-48.15	451.52	116.75	40°22'09.154"N	104°13'26.116"W	0.00	
3217.00†	17.000	14.498	3149.22	-51.17	479.83	124.07	40°22'09.434"N	104°13'26.021"W	0.00	
3317.00†	17.000	14.498	3244.85	-54.18	508.14	131.39	40°22'09.713"N	104°13'25.926"W	0.00	
3417.00†	17.000	14.498	3340.48	-57.20	536.44	138.71	40°22'09.993"N	104°13'25.832"W	0.00	
3517.00†	17.000	14.498	3436.11	-60.22	564.75	146.03	40°22'10.273"N	104°13'25.737"W	0.00	
3617.00†	17.000	14.498	3531.74	-63.24	593.06	153.35	40°22'10.552"N	104°13'25.643"W	0.00	
3717.00†	17.000	14.498	3627.37	-66.26	621.36	160.67	40°22'10.832"N	104°13'25.548"W	0.00	
3757.86	17.000	14.498	3666.45	-67.49	632.93	163.66	40°22'10.946"N	104°13'25.510"W	0.00	End of Tangent
3817.00†	15.817	14.498	3723.18	-69.22	649.10	167.84	40°22'11.106"N	104°13'25.456"W	2.00	
3917.00†	13.817	14.498	3819.85	-71.86	673.86	174.25	40°22'11.351"N	104°13'25.373"W	2.00	
4017.00†	11.817	14.498	3917.35	-74.15	695.34	179.80	40°22'11.563"N	104°13'25.301"W	2.00	
4117.00†	9.817	14.498	4015.57	-76.08	713.51	184.50	40°22'11.743"N	104°13'25.240"W	2.00	
4217.00†	7.817	14.498	4114.38	-77.67	728.34	188.34	40°22'11.889"N	104°13'25.191"W	2.00	
4317.00†	5.817	14.498	4213.67	-78.89	739.84	191.31	40°22'12.003"N	104°13'25.152"W	2.00	
4417.00†	3.817	14.498	4313.31	-79.76	747.97	193.41	40°22'12.083"N	104°13'25.125"W	2.00	
4517.00†	1.817	14.498	4413.19	-80.27	752.73	194.64	40°22'12.130"N	104°13'25.109"W	2.00	
4607.86	0.000	269.210	4504.04	-80.41	754.12	195.00	40°22'12.144"N	104°13'25.105"W	2.00	End of Drop
4617.00†	0.000	269.210	4513.17	-80.41	754.12	195.00	40°22'12.144"N	104°13'25.105"W	0.00	
4717.00†	0.000	269.210	4613.17	-80.41	754.12	195.00	40°22'12.144"N	104°13'25.105"W	0.00	
4817.00†	0.000	269.210	4713.17	-80.41	754.12	195.00	40°22'12.144"N	104°13'25.105"W	0.00	
4917.00†	0.000	269.210	4813.17	-80.41	754.12	195.00	40°22'12.144"N	104°13'25.105"W	0.00	
5017.00†	0.000	269.210	4913.17	-80.41	754.12	195.00	40°22'12.144"N	104°13'25.105"W	0.00	
5117.00†	0.000	269.210	5013.17	-80.41	754.12	195.00	40°22'12.144"N	104°13'25.105"W	0.00	
5217.00†	0.000	269.210	5113.17	-80.41	754.12	195.00	40°22'12.144"N	104°13'25.105"W	0.00	
5317.00†	0.000	269.210	5213.17	-80.41	754.12	195.00	40°22'12.144"N	104°13'25.105"W	0.00	
5417.00†	0.000	269.210	5313.17	-80.41	754.12	195.00	40°22'12.144"N	104°13'25.105"W	0.00	



# Planned Wellpath Report

PRONGHORN 43-13-29HNB (REV-A.0) PWP

Page 4 of 7



## REFERENCE WELLPATH IDENTIFICATION

Operator	BONANZA CREEK OIL COMPANY	Slot	SLOT#03 PRONGHORN 43-13-29HNB (1240'FSL & 210'FEL,SEC.29)
Area	COLORADO	Well	PRONGHORN 43-13-29HNB
Field	WELD COUNTY	Wellbore	PRONGHORN 43-13-29HNB PWB
Facility	SEC.29-T5N-R61W		

## WELLPATH DATA (117 stations) † = interpolated/extrapolated station

MD [ft]	Inclination [°]	Azimuth [°]	TVD [ft]	Vert Sect [ft]	North [ft]	East [ft]	Latitude	Longitude	DLS [°/100ft]	Comments
5517.00†	0.000	269.210	5413.17	-80.41	754.12	195.00	40°22'12.144"N	104°13'25.105"W	0.00	
5613.03	0.000	269.210	5509.21	-80.41	754.12	195.00	40°22'12.144"N	104°13'25.105"W	0.00	End of Tangent
5617.00†	0.436	269.210	5513.17	-80.40	754.12	194.98	40°22'12.144"N	104°13'25.105"W	11.00	
5717.00†	11.436	269.210	5612.48	-70.21	753.98	184.66	40°22'12.143"N	104°13'25.238"W	11.00	
5817.00†	22.436	269.210	5708.00	-41.51	753.58	155.58	40°22'12.139"N	104°13'25.614"W	11.00	
5917.00†	33.436	269.210	5796.21	4.64	752.93	108.80	40°22'12.132"N	104°13'26.218"W	11.00	
6017.00†	44.436	269.210	5873.88	66.56	752.07	46.06	40°22'12.124"N	104°13'27.029"W	11.00	
6117.00†	55.436	269.210	5938.14	141.95	751.01	-30.35	40°22'12.113"N	104°13'28.016"W	11.00	
6217.00†	66.436	269.210	5986.64	228.06	749.81	-117.61	40°22'12.101"N	104°13'29.144"W	11.00	
6249.40	70.000	269.210	5998.66	257.74	749.39	-147.69	40°22'12.097"N	104°13'29.532"W	11.00	End of Build
6317.00†	70.000	269.210	6021.79	320.42	748.52	-211.21	40°22'12.089"N	104°13'30.353"W	0.00	
6319.40	70.000	269.210	6022.61	322.65	748.49	-213.46	40°22'12.088"N	104°13'30.382"W	0.00	End of Tangent
6417.00†	80.736	269.210	6047.22	415.69	747.19	-307.75	40°22'12.075"N	104°13'31.600"W	11.00	
6501.22	90.000	269.210	6054.02	498.42	746.03	-391.60	40°22'12.064"N	104°13'32.683"W	11.00	End of 3D Arc
6517.00†	90.000	269.210	6054.02	513.99	745.81	-407.38	40°22'12.062"N	104°13'32.887"W	0.00	
6617.00†	90.000	269.210	6054.02	612.66	744.43	-507.37	40°22'12.048"N	104°13'34.179"W	0.00	
6717.00†	90.000	269.210	6054.02	711.33	743.06	-607.36	40°22'12.035"N	104°13'35.471"W	0.00	
6817.00†	90.000	269.210	6054.02	810.00	741.68	-707.35	40°22'12.021"N	104°13'36.763"W	0.00	
6917.00†	90.000	269.210	6054.02	908.67	740.30	-807.34	40°22'12.007"N	104°13'38.055"W	0.00	
7017.00†	90.000	269.210	6054.02	1007.33	738.92	-907.33	40°22'11.994"N	104°13'39.346"W	0.00	
7117.00†	90.000	269.210	6054.01	1106.00	737.54	-1007.32	40°22'11.980"N	104°13'40.638"W	0.00	
7217.00†	90.000	269.210	6054.01	1204.67	736.16	-1107.31	40°22'11.966"N	104°13'41.930"W	0.00	
7317.00†	90.000	269.210	6054.01	1303.34	734.78	-1207.30	40°22'11.953"N	104°13'43.222"W	0.00	
7417.00†	90.000	269.210	6054.01	1402.01	733.40	-1307.29	40°22'11.939"N	104°13'44.514"W	0.00	
7517.00†	90.000	269.210	6054.01	1500.67	732.02	-1407.28	40°22'11.925"N	104°13'45.806"W	0.00	
7617.00†	90.000	269.210	6054.01	1599.34	730.65	-1507.27	40°22'11.912"N	104°13'47.097"W	0.00	
7717.00†	90.000	269.210	6054.01	1698.01	729.27	-1607.26	40°22'11.898"N	104°13'48.389"W	0.00	
7817.00†	90.000	269.210	6054.01	1796.68	727.89	-1707.25	40°22'11.884"N	104°13'49.681"W	0.00	
7917.00†	90.000	269.210	6054.01	1895.35	726.51	-1807.24	40°22'11.870"N	104°13'50.973"W	0.00	
8017.00†	90.000	269.210	6054.01	1994.01	725.13	-1907.23	40°22'11.857"N	104°13'52.265"W	0.00	



# Planned Wellpath Report

## PRONGHORN 43-13-29HNB (REV-A.0) PWP

Page 5 of 7



REFERENCE WELLPATH IDENTIFICATION			
Operator	BONANZA CREEK OIL COMPANY	Slot	SLOT#03 PRONGHORN 43-13-29HNB (1240'FSL & 210'FEL,SEC.29)
Area	COLORADO	Well	PRONGHORN 43-13-29HNB
Field	WELD COUNTY	Wellbore	PRONGHORN 43-13-29HNB PWB
Facility	SEC.29-T5N-R61W		

WELLPATH DATA (117 stations) † = interpolated/extrapolated station										
MD [ft]	Inclination [°]	Azimuth [°]	TVD [ft]	Vert Sect [ft]	North [ft]	East [ft]	Latitude	Longitude	DLS [°/100ft]	Comments
8117.00†	90.000	269.210	6054.01	2092.68	723.75	-2007.22	40°22'11.843"N	104°13'53.557"W	0.00	
8217.00†	90.000	269.210	6054.01	2191.35	722.37	-2107.21	40°22'11.829"N	104°13'54.848"W	0.00	
8317.00†	90.000	269.210	6054.01	2290.02	720.99	-2207.20	40°22'11.816"N	104°13'56.140"W	0.00	
8417.00†	90.000	269.210	6054.01	2388.68	719.61	-2307.20	40°22'11.802"N	104°13'57.432"W	0.00	
8517.00†	90.000	269.210	6054.01	2487.35	718.24	-2407.19	40°22'11.788"N	104°13'58.724"W	0.00	
8617.00†	90.000	269.210	6054.01	2586.02	716.86	-2507.18	40°22'11.774"N	104°14'00.016"W	0.00	
8717.00†	90.000	269.210	6054.01	2684.69	715.48	-2607.17	40°22'11.761"N	104°14'01.308"W	0.00	
8817.00†	90.000	269.210	6054.01	2783.36	714.10	-2707.16	40°22'11.747"N	104°14'02.599"W	0.00	
8917.00†	90.000	269.210	6054.01	2882.02	712.72	-2807.15	40°22'11.733"N	104°14'03.891"W	0.00	
9017.00†	90.000	269.210	6054.01	2980.69	711.34	-2907.14	40°22'11.720"N	104°14'05.183"W	0.00	
9117.00†	90.000	269.210	6054.01	3079.36	709.96	-3007.13	40°22'11.706"N	104°14'06.475"W	0.00	
9217.00†	90.000	269.210	6054.01	3178.03	708.58	-3107.12	40°22'11.692"N	104°14'07.767"W	0.00	
9317.00†	90.000	269.210	6054.01	3276.70	707.20	-3207.11	40°22'11.678"N	104°14'09.059"W	0.00	
9417.00†	90.000	269.210	6054.01	3375.36	705.83	-3307.10	40°22'11.665"N	104°14'10.350"W	0.00	
9517.00†	90.000	269.210	6054.00	3474.03	704.45	-3407.09	40°22'11.651"N	104°14'11.642"W	0.00	
9617.00†	90.000	269.210	6054.00	3572.70	703.07	-3507.08	40°22'11.637"N	104°14'12.934"W	0.00	
9717.00†	90.000	269.210	6054.00	3671.37	701.69	-3607.07	40°22'11.623"N	104°14'14.226"W	0.00	
9817.00†	90.000	269.210	6054.00	3770.04	700.31	-3707.06	40°22'11.609"N	104°14'15.518"W	0.00	
9917.00†	90.000	269.210	6054.00	3868.70	698.93	-3807.05	40°22'11.596"N	104°14'16.810"W	0.00	
10017.00†	90.000	269.210	6054.00	3967.37	697.55	-3907.04	40°22'11.582"N	104°14'18.101"W	0.00	
10117.00†	90.000	269.210	6054.00	4066.04	696.17	-4007.03	40°22'11.568"N	104°14'19.393"W	0.00	
10217.00†	90.000	269.210	6054.00	4164.71	694.79	-4107.02	40°22'11.554"N	104°14'20.685"W	0.00	
10317.00†	90.000	269.210	6054.00	4263.38	693.42	-4207.01	40°22'11.541"N	104°14'21.977"W	0.00	
10417.00†	90.000	269.210	6054.00	4362.04	692.04	-4307.01	40°22'11.527"N	104°14'23.269"W	0.00	
10517.00†	90.000	269.210	6054.00	4460.71	690.66	-4407.00	40°22'11.513"N	104°14'24.561"W	0.00	
10617.00†	90.000	269.210	6054.00	4559.38	689.28	-4506.99	40°22'11.499"N	104°14'25.853"W	0.00	
10677.09	90.000	269.210	6054.00 <sup>1</sup>	4618.67	688.45	-4567.07	40°22'11.491"N	104°14'26.629"W	0.00	End of Tangent





# Planned Wellpath Report

## PRONGHORN 43-13-29HNB (REV-A.0) PWP

Page 6 of 7



### REFERENCE WELLPATH IDENTIFICATION

Operator	BONANZA CREEK OIL COMPANY	Slot	SLOT#03 PRONGHORN 43-13-29HNB (1240'FSL & 210'FEL,SEC.29)
Area	COLORADO	Well	PRONGHORN 43-13-29HNB
Field	WELD COUNTY	Wellbore	PRONGHORN 43-13-29HNB PWB
Facility	SEC.29-T5N-R61W		

### HOLE & CASING SECTIONS -

Ref Wellbore: PRONGHORN 43-13-29HNB PWB Ref Wellpath: PRONGHORN 43-13-29HNB (REV-A.0) PWP

String/Diameter	Start MD [ft]	End MD [ft]	Interval [ft]	Start TVD [ft]	End TVD [ft]	Start N/S [ft]	Start E/W [ft]	End N/S [ft]	End E/W [ft]
7in Casing Intermediate	17.00	6501.22	6484.22	17.00	6054.02	0.00	0.00	746.03	-391.60
4.5in Casing Production	17.00	10677.00	10660.00	17.00	6054.00	0.00	0.00	688.45	-4566.98

### TARGETS

Name	MD [ft]	TVD [ft]	North [ft]	East [ft]	Grid East [US ft]	Grid North [US ft]	Latitude	Longitude	Shape
PRONGHORN 44-14-29HNB SECTION 29		0.00	0.00	-41.80	3355398.33	1379448.09	40°22'04.692"N	104°13'28.164"W	polygon
PRONGHORN 43-13-29HNB BHL REV-1 From Plat (1942'FSL & 470'FWL,SEC.29)		6054.00	357.45	-4567.07	3350868.58	1379740.39	40°22'08.220"N	104°14'26.628"W	point
1) PRONGHORN 43-13-29HNB BHL REV-2 (1942'FSL & 470'FWL,SEC.29)	10677.09	6054.00	688.45	-4567.07	3350863.82	1380071.35	40°22'11.491"N	104°14'26.629"W	point
PRONGHORN 43-13-29HNB TARGET		6054.00	754.12	-323.23	3355106.09	1380198.06	40°22'12.144"N	104°13'31.800"W	point
PRONGHORN 44-14-29HNB HARDLINES (460'SETBACK)		6054.00	0.00	-41.80	3355398.33	1379448.09	40°22'04.692"N	104°13'28.164"W	polygon
Ex.Campbell#1 200'R		6780.00	1988.10	-1762.07	3353649.71	1381411.16	40°22'24.337"N	104°13'50.390"W	circle
Ex.STATE CRAZY HORSE #1 200'R		7015.00	629.17	-675.44	3354755.73	1380068.06	40°22'10.909"N	104°13'36.350"W	circle

### SURVEY PROGRAM - Ref Wellbore: PRONGHORN 43-13-29HNB PWB Ref Wellpath: PRONGHORN 43-13-29HNB (REV-A.0) PWP

Start MD [ft]	End MD [ft]	Positional Uncertainty Model	Log Name/Comment	Wellbore
17.00	10800.00	NaviTrak (Standard)		PRONGHORN 43-13-29HNB PWB



**Planned Wellpath Report**  
**PRONGHORN 43-13-29HNB (REV-A.0) PWP**  
Page 7 of 7



REFERENCE WELLPATH IDENTIFICATION			
Operator	BONANZA CREEK OIL COMPANY	Slot	SLOT#03 PRONGHORN 43-13-29HNB (1240'FSL & 210'FEL,SEC.29)
Area	COLORADO	Well	PRONGHORN 43-13-29HNB
Field	WELD COUNTY	Wellbore	PRONGHORN 43-13-29HNB PWB
Facility	SEC.29-T5N-R61W		

DESIGN COMMENTS				
MD [ft]	Inclination [°]	Azimuth [°]	TVD [ft]	Comment
17.00	0.000	14.498	17.00	Tie On
1100.00	0.000	14.498	1100.00	End of Tangent
1950.00	17.000	14.498	1937.58	End of Build
3757.86	17.000	14.498	3666.45	End of Tangent
4607.86	0.000	269.210	4504.04	End of Drop
5613.03	0.000	269.210	5509.21	End of Tangent
6249.40	70.000	269.210	5998.66	End of Build
6319.40	70.000	269.210	6022.61	End of Tangent
6501.22	90.000	269.210	6054.02	End of 3D Arc
10677.09	90.000	269.210	6054.00	End of Tangent