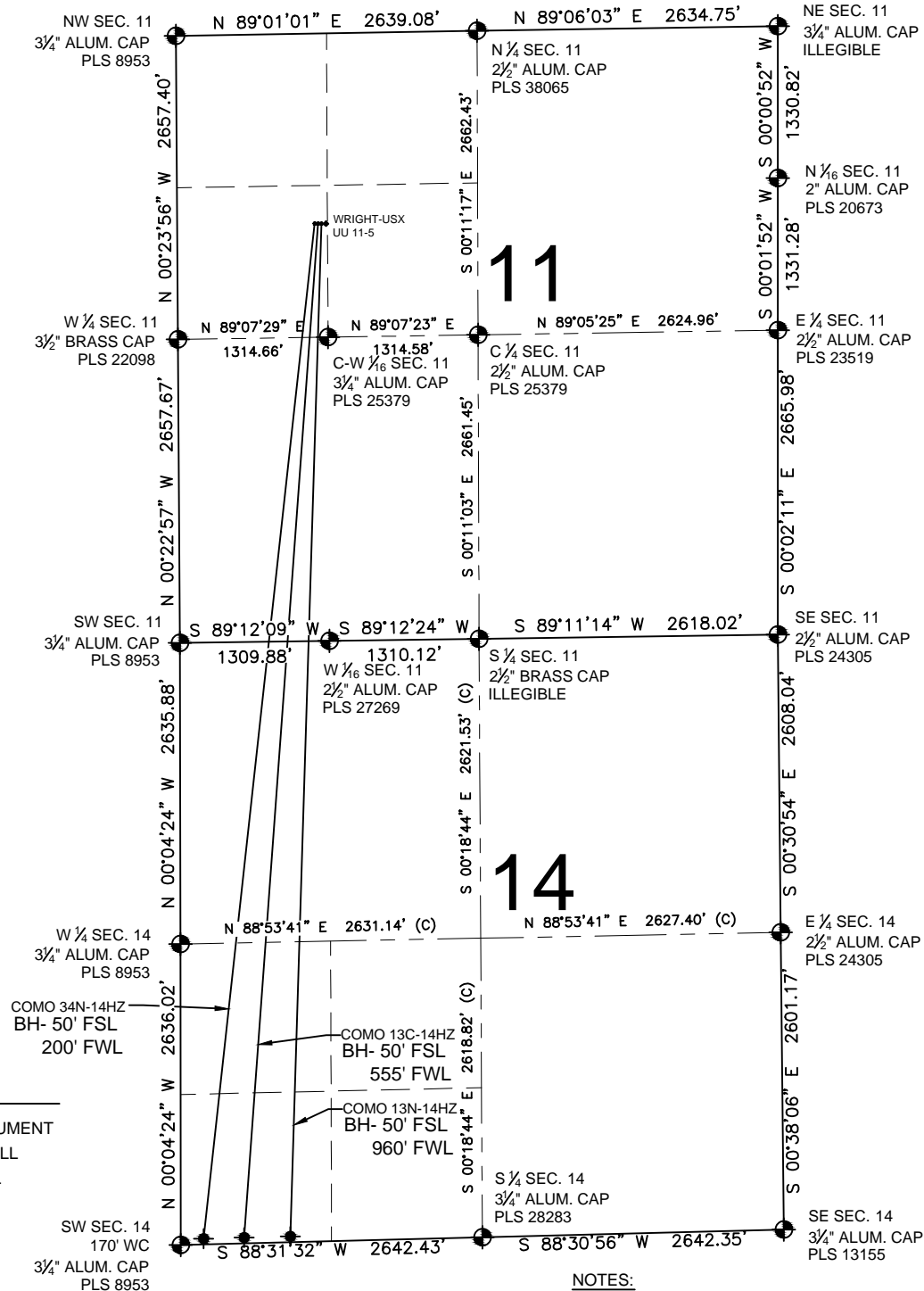


# COMO 13N-14HZ MULTI-WELL PLAN

SECTION 11, TOWNSHIP 1 NORTH, RANGE 68 WEST, 6TH P.M.



PREPARED BY:



Petroleum Field Services, LLC  
7535 Hilltop Circle  
Denver, CO 80221

KERR-MCGEE OIL & GAS ONSHORE LP

FIELD DATE:

04-21-14

DRAWING DATE:

04-22-14

SURFACE LOCATION:

SW 1/4 NW 1/4, SEC. 11, T1N, R68W, 6TH P.M.

WELD COUNTY, COLORADO

