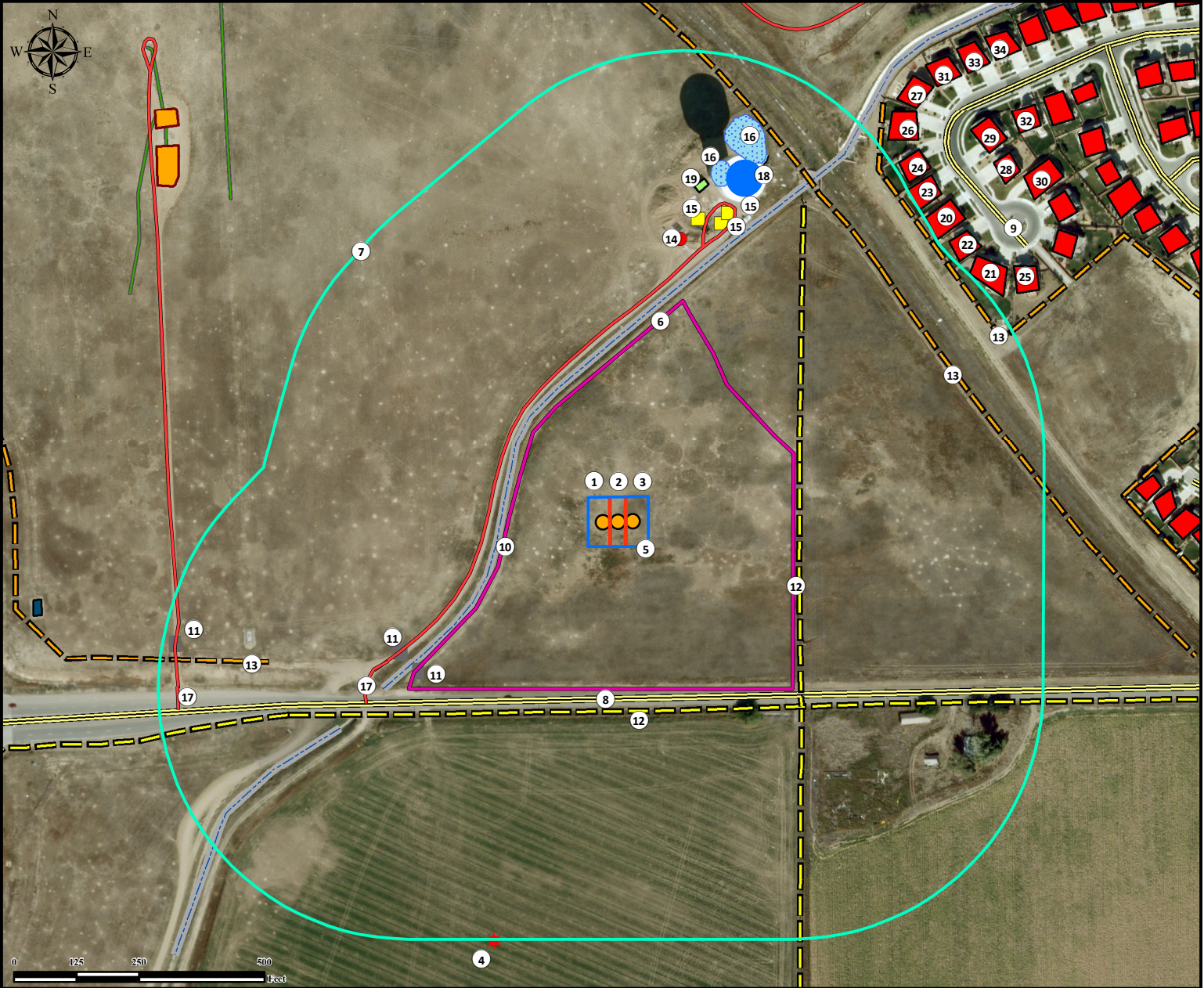


Location Drawing

RANCHVIEW 3N-11HZ

Horizontal Multi Well Pad

SE¼ SW¼ SECTION 14, TOWNSHIP 1 NORTH, RANGE 68 WEST OF THE 6TH PRINCIPAL MERIDIAN



- | | | | |
|---|---|---|--|
| <ul style="list-style-type: none"> 1. Proposed Well RANCHVIEW 3C-11HZ. 2. Proposed Well RANCHVIEW 3N-11HZ. 3. Proposed Well RANCHVIEW 28C-11HZ. 4. Existing Well BURY 28-23 is ±872' SW. 5. Pump Jack Operational Area. 6. Operating Disturbance Area. 7. 500' Radius. 8. County Road 8 is ±352' S. 9. Sedona Ln. is ±982' NE. | <ul style="list-style-type: none"> 10. Concrete Ditch is ±231' W. 11. Gates are ±498' SW, ±505' SW, 533' SW, and ±916' SW. 12. Powerlines are ±360' E and ±377' S. 13. Fences are ±718' NE, ±749' SW, and ±832' NE. 14. Water Hydrant is ±578' NE. 15. Utility Boxes are ±626' NE, ±630' NE, and ±653' NE. 16. Ponds are ±701' NE and ±761' NE. 17. Private Roads are ±234' W and ±1011' W. 18. Water Tower is ±690' NE. | <ul style="list-style-type: none"> 19. Building is ±678' NE. 20. Building Unit is ±849' NE. 21. Building Unit is ±858' NE. 22. Building Unit is ±858' NE. 23. Building Unit is ±864' NE. 24. Building Unit is ±890' NE. 25. Building Unit is ±916' NE. 26. Building Unit is ±932' NE. | <ul style="list-style-type: none"> 27. Building Unit is ±1011' NE. 28. Building Unit is ±1024' NE. 29. Building Unit is ±1043' NE. 30. Building Unit is ±1049' NE. 31. Building Unit is ±1077' NE. 32. Building Unit is ±1115' NE. 33. Building Unit is ±1135' NE. 34. Building Unit is ±1190' NE. |
|---|---|---|--|

Legend		Reference Location	
	Disturbance Area		Building Unit
	Proposed Well		Building
	Existing Well		Oil & Gas Equipment
	Water Hydrant		Gate
	Water Tower		Public Road
	Pump Jack Operations Area		Powerline
	500' Radius		Fence
	Lake/Pond		Pipeline
	Facility Enclosure		Concrete Ditch

** All measurements are made from Reference Well RANCHVIEW 3N-11HZ **
 Lat: 40.045032° Long: -104.971821° (NAD83)
 Elevation: 5144 Feet

Surface Use: Rangeland

Nearest Building Unit: ±849' NE

PFS Petroleum Field Services
 Use our resources to find yours!
www.petro-fs.com
 (303) 928-7128

Field Date: 01/22/2014
 Drafting Date: 05/14/2014
 Drafter: SMG
 Revision: 3

Data Sources:
 - Aerial courtesy of Anadarko Petroleum Corporation (2010)

Prepared for:

KERR-MCGEE OIL & GAS ONSHORE LP