



**BONANZA
CREEK**

410 17th Street, Suite 1500
Denver, CO 80202
(720) 440-6100 phone
(720) 279-2331 fax

25 June 2014

Colorado Oil and Gas Conservation
Commission
The Chancery Building
1120 Lincoln Street, Suite 801
Denver, CO 80203

Attn: Matthew Lepore, Director

Re: Notice of 318A.a.(4)D. Horizontal Wellbore Spacing Unit Proposal
State Seventy Holes A-E-6HNB
SHL: Lot 2 (788' FNL, 1680' FWL) Sec. 6-T4N-R62W
Top of Production: NWNW (631' FNL, 60' FWL) Sec. 6-T4N-R62W
Bottom of Production: SESW (470' FSL, 60' FWL) Sec. 6-T4N-R62W
Weld County, Colorado

Dear Director Lepore,

Bonanza Creek Energy, Inc. (Bonanza) intends to permit, drill and operate the referenced Niobrara Horizontal Well. As defined by Colorado Oil and Gas Conservation Commission (COGCC) Rule 318A.a.(4)D., Bonanza proposes the following wellbore spacing unit:

W/2W/2, Sec. 6-T4N-R62W and E/2E/2, Sec. 1-T4N-R63W containing 320 acres more or less

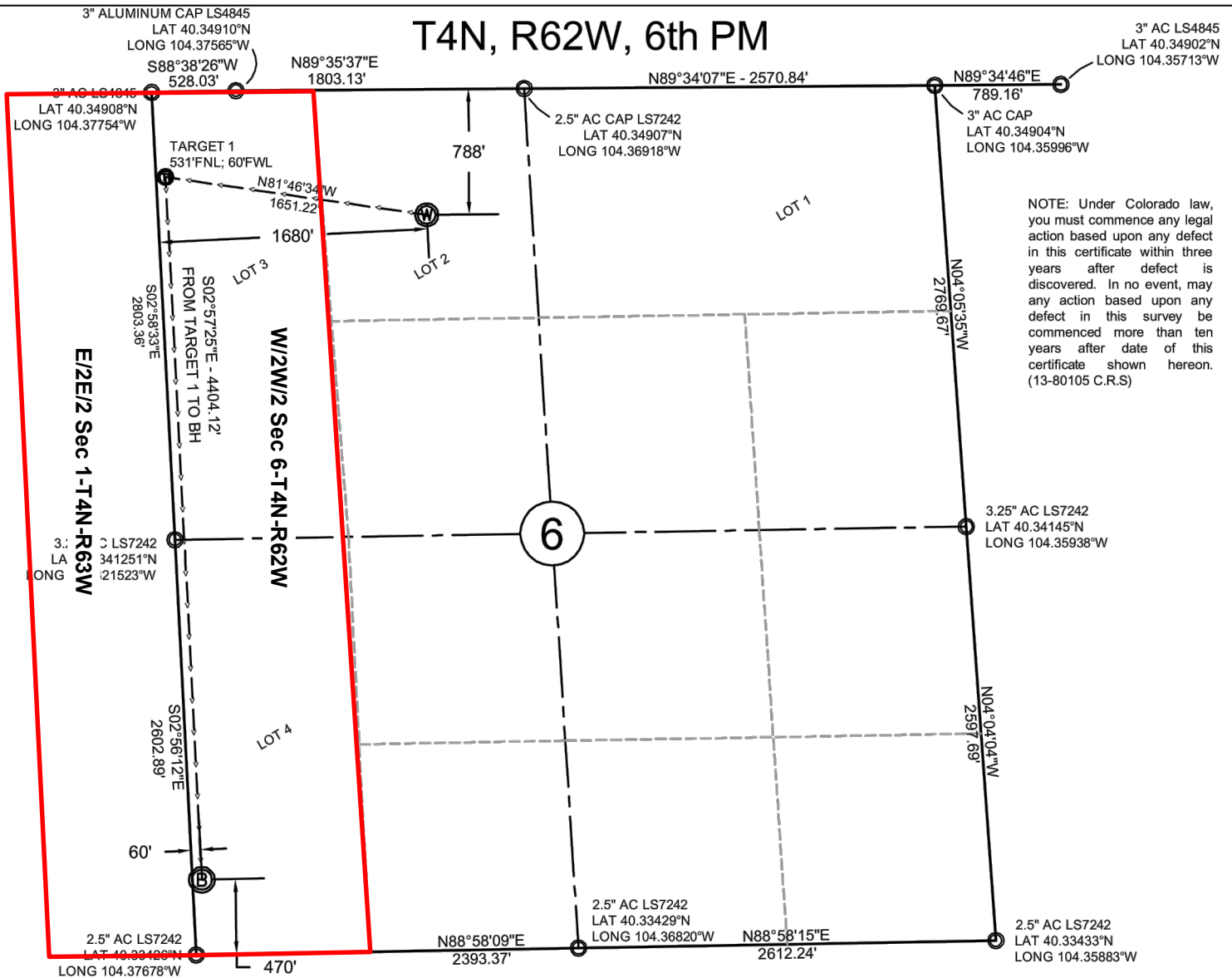
Bonanza is the sole mineral lease holder in the proposed spacing unit, and no mineral owner Notifications were required.

Bonanza respectfully requests that you review the enclosed wellbore spacing unit documentation and approve the referenced APD.

Please do not hesitate to call or email me, directly, at (720) 440-6179 or
KKrupka@Bonanzacrk.com, should you have any questions pertaining to this matter.

Thank you for your cooperation.

Sincerely,
Katey Krupka
Regulatory Assistant
Bonanza Creek Energy, Inc.

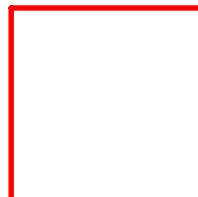


NOTES:

- All bearings are GRID based upon the Colorado State Plane Coordinate System, North Zone, NAD83(2011) derived from post-processed static GPS observations.
- Distances are at GROUND
- Vertical Datum is NAVD88 based upon GPS observations
- PDOP value equals 1.5.
- GPS operator: Dave Fehringer.
- Undisturbed ground elevation at wellhead = 4538'

CERTIFICATE OF SURVEYOR

I, David A. Fehring of Lander, Wyoming hereby certify that this well location certificate was prepared from notes taken during an actual survey on JUNE 9, 2014 and that it correctly shows the drilling location of BONANZA CREEK ENERGY, INC., STATE SEVENTY HOLES A-E-6HNB as staked during said survey. This map does not represent a boundary survey or an improvement location plat and ~~should not be used for the establishment of boundary lines.~~



Wellbore Spacing Unit Outline



Wellbore Spacing Unit Map

17 June 2014 ksc

State Seventy Holes A-E-6HNB
W/2W/2 Sec 6-T4N-R62W 6th PM
E/2E/2 Sec 1-T4N-R63W 6th PM
Weld County, Colorado