



**Bill Barrett Corporation**

## **Bill Barrett Corp.**

Weld Co., CO

Sec.15-T6N-R62W

Will 6-62-15-0362BH2

Wellbore #1

Plan: Design #1

## **Standard Planning Report**

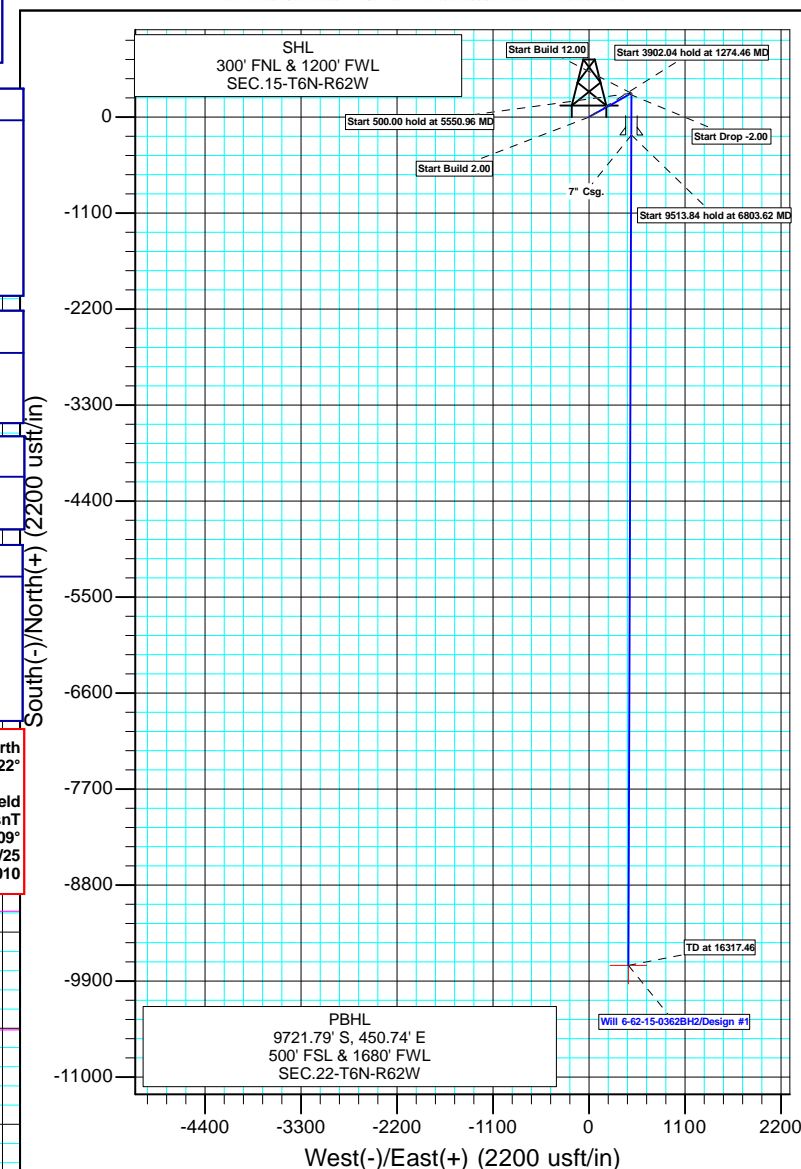
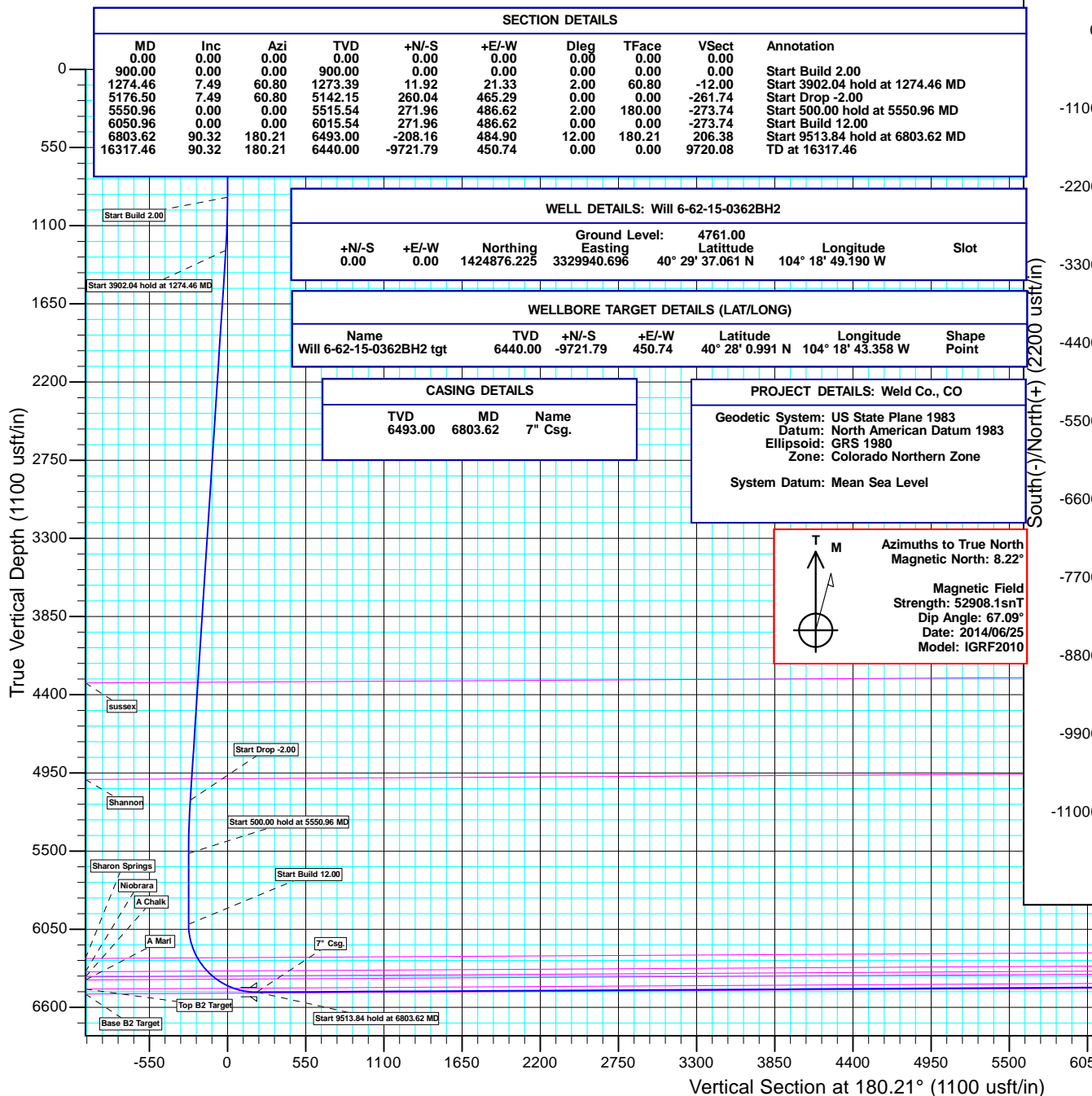
25 June, 2014

# **Archer**



Bill Barrett Corp.  
Project: Weld Co., CO  
Site: Sec.15-T6N-R62W  
Well: Will 6-62-15-0362BH2  
Wellbore: Wellbore #1  
Design: Design #1  
Lat: 40° 29' 37.061 N  
Long: 104° 18' 49.190 W  
Pad GL: 4761.00  
KB: WELL @ 4783.00usft (Original Well Elev)

# Archer



<b>Database:</b>	EDMDBBW	<b>Local Co-ordinate Reference:</b>	Well Will 6-62-15-0362BH2
<b>Company:</b>	Bill Barrett Corp.	<b>TVD Reference:</b>	WELL @ 4783.00usft (Original Well Elev)
<b>Project:</b>	Weld Co., CO	<b>MD Reference:</b>	WELL @ 4783.00usft (Original Well Elev)
<b>Site:</b>	Sec.15-T6N-R62W	<b>North Reference:</b>	True
<b>Well:</b>	Will 6-62-15-0362BH2	<b>Survey Calculation Method:</b>	Minimum Curvature
<b>Wellbore:</b>	Wellbore #1		
<b>Design:</b>	Design #1		

<b>Project</b>	Weld Co., CO		
<b>Map System:</b>	US State Plane 1983	<b>System Datum:</b>	Mean Sea Level
<b>Geo Datum:</b>	North American Datum 1983		
<b>Map Zone:</b>	Colorado Northern Zone		

Site		Sec.15-T6N-R62W			
Site Position:		Northing:	1,424,875.232 usft	Latitude:	40° 29' 37.061 N
From:	Lat/Long	Easting:	3,329,865.887 usft	Longitude:	104° 18' 50.159 W
Position Uncertainty:	0.00 usft	Slot Radius:	13-3/16"	Grid Convergence:	0.77 °

Well	Will 6-62-15-0362BH2					
Well Position	+N/-S	-0.01 usft	Northing:	1,424,876.225 usft	Latitude:	40° 29' 37.061 N
	+E/-W	74.82 usft	Easting:	3,329,940.696 usft	Longitude:	104° 18' 49.190 W
Position Uncertainty		0.00 usft	Wellhead Elevation:	usft	Ground Level:	4,761.00 usft

<b>Wellbore</b>	Wellbore #1				
<b>Magnetics</b>	<b>Model Name</b>	<b>Sample Date</b>	<b>Declination (°)</b>	<b>Dip Angle (°)</b>	<b>Field Strength (nT)</b>
	IGRF2010	2014/06/25	8.22	67.09	52,908

<b>Design</b>	Design #1			
<b>Audit Notes:</b>				
<b>Version:</b>	<b>Phase:</b>	PLAN	<b>Tie On Depth:</b>	0.00
<b>Vertical Section:</b>	<b>Depth From (TVD) (usft)</b>	<b>+N/-S (usft)</b>	<b>+E/-W (usft)</b>	<b>Direction (°)</b>
	0.00	0.00	0.00	180.21

<b>Plan Sections</b>										
Measured Depth (usft)	Inclination (°)	Azimuth (°)	Vertical Depth (usft)	+N/-S (usft)	+E/-W (usft)	Dogleg Rate (°/100usft)	Build Rate (°/100usft)	Turn Rate (°/100usft)	TFO (°)	Target
0.00	0.00	0.00	0.00	0.00	0.00	0.00	0.00	0.00	0.00	
900.00	0.00	0.00	900.00	0.00	0.00	0.00	0.00	0.00	0.00	
1,274.46	7.49	60.80	1,273.39	11.92	21.33	2.00	2.00	0.00	60.80	
5,176.50	7.49	60.80	5,142.15	260.04	465.29	0.00	0.00	0.00	0.00	
5,550.96	0.00	0.00	5,515.54	271.96	486.62	2.00	-2.00	0.00	180.00	
6,050.96	0.00	0.00	6,015.54	271.96	486.62	0.00	0.00	0.00	0.00	
6,803.62	90.32	180.21	6,493.00	-208.16	484.90	12.00	12.00	0.00	180.21	Will 6-62-15-0362BH2
16,317.46	90.32	180.21	6,440.00	-9,721.79	450.74	0.00	0.00	0.00	0.00	Will 6-62-15-0362BH2

<b>Database:</b>	EDMDBBW	<b>Local Co-ordinate Reference:</b>	Well Will 6-62-15-0362BH2
<b>Company:</b>	Bill Barrett Corp.	<b>TVD Reference:</b>	WELL @ 4783.00usft (Original Well Elev)
<b>Project:</b>	Weld Co., CO	<b>MD Reference:</b>	WELL @ 4783.00usft (Original Well Elev)
<b>Site:</b>	Sec.15-T6N-R62W	<b>North Reference:</b>	True
<b>Well:</b>	Will 6-62-15-0362BH2	<b>Survey Calculation Method:</b>	Minimum Curvature
<b>Wellbore:</b>	Wellbore #1		
<b>Design:</b>	Design #1		

Planned Survey									
Measured Depth (usft)	Inclination (°)	Azimuth (°)	Vertical Depth (usft)	+N/-S (usft)	+E/-W (usft)	Vertical Section (usft)	Dogleg Rate (°/100usft)	Build Rate (°/100usft)	Turn Rate (°/100usft)
0.00	0.00	0.00	0.00	0.00	0.00	0.00	0.00	0.00	0.00
100.00	0.00	0.00	100.00	0.00	0.00	0.00	0.00	0.00	0.00
200.00	0.00	0.00	200.00	0.00	0.00	0.00	0.00	0.00	0.00
300.00	0.00	0.00	300.00	0.00	0.00	0.00	0.00	0.00	0.00
400.00	0.00	0.00	400.00	0.00	0.00	0.00	0.00	0.00	0.00
500.00	0.00	0.00	500.00	0.00	0.00	0.00	0.00	0.00	0.00
600.00	0.00	0.00	600.00	0.00	0.00	0.00	0.00	0.00	0.00
700.00	0.00	0.00	700.00	0.00	0.00	0.00	0.00	0.00	0.00
800.00	0.00	0.00	800.00	0.00	0.00	0.00	0.00	0.00	0.00
<b>Start Build 2.00</b>									
900.00	0.00	0.00	900.00	0.00	0.00	0.00	0.00	0.00	0.00
1,000.00	2.00	60.80	999.98	0.85	1.52	-0.86	2.00	2.00	0.00
1,100.00	4.00	60.80	1,099.84	3.40	6.09	-3.43	2.00	2.00	0.00
1,200.00	6.00	60.80	1,199.45	7.66	13.70	-7.71	2.00	2.00	0.00
<b>Start 3902.04 hold at 1274.46 MD</b>									
1,274.46	7.49	60.80	1,273.39	11.92	21.33	-12.00	2.00	2.00	0.00
1,300.00	7.49	60.80	1,298.72	13.55	24.24	-13.64	0.00	0.00	0.00
1,400.00	7.49	60.80	1,397.86	19.90	35.62	-20.04	0.00	0.00	0.00
1,500.00	7.49	60.80	1,497.01	26.26	46.99	-26.44	0.00	0.00	0.00
1,600.00	7.49	60.80	1,596.16	32.62	58.37	-32.84	0.00	0.00	0.00
1,700.00	7.49	60.80	1,695.30	38.98	69.75	-39.24	0.00	0.00	0.00
1,800.00	7.49	60.80	1,794.45	45.34	81.13	-45.64	0.00	0.00	0.00
1,900.00	7.49	60.80	1,893.60	51.70	92.50	-52.04	0.00	0.00	0.00
2,000.00	7.49	60.80	1,992.75	58.06	103.88	-58.44	0.00	0.00	0.00
2,100.00	7.49	60.80	2,091.89	64.42	115.26	-64.84	0.00	0.00	0.00
2,200.00	7.49	60.80	2,191.04	70.77	126.64	-71.24	0.00	0.00	0.00
2,300.00	7.49	60.80	2,290.19	77.13	138.01	-77.64	0.00	0.00	0.00
2,400.00	7.49	60.80	2,389.33	83.49	149.39	-84.04	0.00	0.00	0.00
2,500.00	7.49	60.80	2,488.48	89.85	160.77	-90.44	0.00	0.00	0.00
2,600.00	7.49	60.80	2,587.63	96.21	172.15	-96.84	0.00	0.00	0.00
2,700.00	7.49	60.80	2,686.77	102.57	183.52	-103.24	0.00	0.00	0.00
2,800.00	7.49	60.80	2,785.92	108.93	194.90	-109.64	0.00	0.00	0.00
2,900.00	7.49	60.80	2,885.07	115.28	206.28	-116.04	0.00	0.00	0.00
3,000.00	7.49	60.80	2,984.22	121.64	217.66	-122.44	0.00	0.00	0.00
3,100.00	7.49	60.80	3,083.36	128.00	229.03	-128.84	0.00	0.00	0.00
3,200.00	7.49	60.80	3,182.51	134.36	240.41	-135.24	0.00	0.00	0.00
3,300.00	7.49	60.80	3,281.66	140.72	251.79	-141.64	0.00	0.00	0.00
3,400.00	7.49	60.80	3,380.80	147.08	263.17	-148.04	0.00	0.00	0.00
3,500.00	7.49	60.80	3,479.95	153.44	274.54	-154.44	0.00	0.00	0.00
3,600.00	7.49	60.80	3,579.10	159.79	285.92	-160.84	0.00	0.00	0.00
3,700.00	7.49	60.80	3,678.24	166.15	297.30	-167.24	0.00	0.00	0.00
3,800.00	7.49	60.80	3,777.39	172.51	308.68	-173.64	0.00	0.00	0.00
3,900.00	7.49	60.80	3,876.54	178.87	320.05	-180.04	0.00	0.00	0.00
4,000.00	7.49	60.80	3,975.68	185.23	331.43	-186.44	0.00	0.00	0.00
4,100.00	7.49	60.80	4,074.83	191.59	342.81	-192.84	0.00	0.00	0.00
4,200.00	7.49	60.80	4,173.98	197.95	354.19	-199.24	0.00	0.00	0.00
4,300.00	7.49	60.80	4,273.13	204.30	365.56	-205.64	0.00	0.00	0.00
<b>sussex</b>									
4,339.37	7.49	60.80	4,312.16	206.81	370.04	-208.16	0.00	0.00	0.00
4,400.00	7.49	60.80	4,372.27	210.66	376.94	-212.04	0.00	0.00	0.00
4,500.00	7.49	60.80	4,471.42	217.02	388.32	-218.44	0.00	0.00	0.00
4,600.00	7.49	60.80	4,570.57	223.38	399.70	-224.84	0.00	0.00	0.00
4,700.00	7.49	60.80	4,669.71	229.74	411.07	-231.24	0.00	0.00	0.00

<b>Database:</b>	EDMDBBW	<b>Local Co-ordinate Reference:</b>	Well Will 6-62-15-0362BH2
<b>Company:</b>	Bill Barrett Corp.	<b>TVD Reference:</b>	WELL @ 4783.00usft (Original Well Elev)
<b>Project:</b>	Weld Co., CO	<b>MD Reference:</b>	WELL @ 4783.00usft (Original Well Elev)
<b>Site:</b>	Sec.15-T6N-R62W	<b>North Reference:</b>	True
<b>Well:</b>	Will 6-62-15-0362BH2	<b>Survey Calculation Method:</b>	Minimum Curvature
<b>Wellbore:</b>	Wellbore #1		
<b>Design:</b>	Design #1		

Planned Survey									
Measured Depth (usft)	Inclination (°)	Azimuth (°)	Vertical Depth (usft)	+N/-S (usft)	+E/-W (usft)	Vertical Section (usft)	Dogleg Rate (°/100usft)	Build Rate (°/100usft)	Turn Rate (°/100usft)
4,800.00	7.49	60.80	4,768.86	236.10	422.45	-237.64	0.00	0.00	0.00
4,900.00	7.49	60.80	4,868.01	242.46	433.83	-244.04	0.00	0.00	0.00
5,000.00	7.49	60.80	4,967.15	248.81	445.21	-250.45	0.00	0.00	0.00
<b>Shannon</b>									
5,025.47	7.49	60.80	4,992.41	250.43	448.10	-252.08	0.00	0.00	0.00
5,100.00	7.49	60.80	5,066.30	255.17	456.58	-256.85	0.00	0.00	0.00
<b>Start Drop -2.00</b>									
5,176.50	7.49	60.80	5,142.15	260.04	465.29	-261.74	0.00	0.00	0.00
5,200.00	7.02	60.80	5,165.46	261.49	467.88	-263.20	2.00	-2.00	0.00
5,300.00	5.02	60.80	5,264.90	266.60	477.03	-268.35	2.00	-2.00	0.00
5,400.00	3.02	60.80	5,364.65	270.02	483.15	-271.79	2.00	-2.00	0.00
5,500.00	1.02	60.80	5,464.59	271.74	486.22	-273.52	2.00	-2.00	0.00
<b>Start 500.00 hold at 5550.96 MD</b>									
5,550.96	0.00	0.00	5,515.54	271.96	486.62	-273.74	2.00	-2.00	0.00
5,600.00	0.00	0.00	5,564.58	271.96	486.62	-273.74	0.00	0.00	0.00
5,700.00	0.00	0.00	5,664.58	271.96	486.62	-273.74	0.00	0.00	0.00
5,800.00	0.00	0.00	5,764.58	271.96	486.62	-273.74	0.00	0.00	0.00
5,900.00	0.00	0.00	5,864.58	271.96	486.62	-273.74	0.00	0.00	0.00
6,000.00	0.00	0.00	5,964.58	271.96	486.62	-273.74	0.00	0.00	0.00
<b>Start Build 12.00</b>									
6,050.96	0.00	0.00	6,015.54	271.96	486.62	-273.74	0.00	0.00	0.00
6,075.00	2.89	180.21	6,039.57	271.35	486.62	-273.14	12.00	12.00	0.00
6,100.00	5.89	180.21	6,064.50	269.44	486.61	-271.23	12.00	12.00	0.00
6,125.00	8.89	180.21	6,089.29	266.23	486.60	-268.01	12.00	12.00	0.00
6,150.00	11.89	180.21	6,113.87	261.72	486.58	-263.51	12.00	12.00	0.00
6,175.00	14.89	180.21	6,138.19	255.94	486.56	-257.72	12.00	12.00	0.00
6,200.00	17.89	180.21	6,162.17	248.89	486.54	-250.67	12.00	12.00	0.00
6,225.00	20.89	180.21	6,185.75	240.59	486.51	-242.37	12.00	12.00	0.00
6,250.00	23.89	180.21	6,208.87	231.07	486.47	-232.85	12.00	12.00	0.00
6,275.00	26.89	180.21	6,231.45	220.35	486.43	-222.13	12.00	12.00	0.00
<b>Sharon Springs</b>									
6,298.54	29.71	180.21	6,252.18	209.19	486.39	-210.98	12.00	12.00	0.00
6,300.00	29.89	180.21	6,253.44	208.47	486.39	-210.25	12.00	12.00	0.00
6,325.00	32.89	180.21	6,274.78	195.45	486.35	-197.23	12.00	12.00	0.00
6,350.00	35.89	180.21	6,295.41	181.33	486.29	-183.12	12.00	12.00	0.00
6,375.00	38.89	180.21	6,315.27	166.16	486.24	-167.94	12.00	12.00	0.00
6,400.00	41.89	180.21	6,334.31	149.96	486.18	-151.74	12.00	12.00	0.00
<b>Niobrara</b>									
6,414.27	43.60	180.21	6,344.79	140.28	486.15	-142.06	12.00	12.00	0.00
6,425.00	44.89	180.21	6,352.48	132.79	486.12	-134.57	12.00	12.00	0.00
6,450.00	47.89	180.21	6,369.72	114.69	486.06	-116.47	12.00	12.00	0.00
<b>A Chalk</b>									
6,464.97	49.68	180.21	6,379.59	103.43	486.01	-105.21	12.00	12.00	0.00
6,475.00	50.89	180.21	6,386.00	95.72	485.99	-97.50	12.00	12.00	0.00
6,500.00	53.89	180.21	6,401.25	75.92	485.92	-77.70	12.00	12.00	0.00
<b>A Marl</b>									
6,500.30	53.92	180.21	6,401.43	75.67	485.92	-77.45	12.00	12.00	0.00
6,525.00	56.89	180.21	6,415.45	55.34	485.84	-57.12	12.00	12.00	0.00
6,550.00	59.89	180.21	6,428.56	34.06	485.77	-35.84	12.00	12.00	0.00
6,575.00	62.89	180.21	6,440.53	12.11	485.69	-13.89	12.00	12.00	0.00
6,600.00	65.89	180.21	6,451.34	-10.43	485.61	8.65	12.00	12.00	0.00
6,625.00	68.89	180.21	6,460.95	-33.50	485.52	31.72	12.00	12.00	0.00
<b>Top B2 Target</b>									

<b>Database:</b>	EDMDBBW	<b>Local Co-ordinate Reference:</b>	Well Will 6-62-15-0362BH2
<b>Company:</b>	Bill Barrett Corp.	<b>TVD Reference:</b>	WELL @ 4783.00usft (Original Well Elev)
<b>Project:</b>	Weld Co., CO	<b>MD Reference:</b>	WELL @ 4783.00usft (Original Well Elev)
<b>Site:</b>	Sec.15-T6N-R62W	<b>North Reference:</b>	True
<b>Well:</b>	Will 6-62-15-0362BH2	<b>Survey Calculation Method:</b>	Minimum Curvature
<b>Wellbore:</b>	Wellbore #1		
<b>Design:</b>	Design #1		

Planned Survey									
Measured Depth (usft)	Inclination (°)	Azimuth (°)	Vertical Depth (usft)	+N/-S (usft)	+E/-W (usft)	Vertical Section (usft)	Dogleg Rate (°/100usft)	Build Rate (°/100usft)	Turn Rate (°/100usft)
6,638.85	70.55	180.21	6,465.75	-46.50	485.48	44.72	12.00	12.00	0.00
6,650.00	71.89	180.21	6,469.34	-57.05	485.44	55.27	12.00	12.00	0.00
6,675.00	74.89	180.21	6,476.49	-81.00	485.35	79.22	12.00	12.00	0.00
6,700.00	77.89	180.21	6,482.37	-105.30	485.27	103.52	12.00	12.00	0.00
6,725.00	80.89	180.21	6,486.98	-129.87	485.18	128.09	12.00	12.00	0.00
6,750.00	83.89	180.21	6,490.29	-154.64	485.09	152.86	12.00	12.00	0.00
6,775.00	86.89	180.21	6,492.30	-179.56	485.00	177.78	12.00	12.00	0.00
6,800.00	89.89	180.21	6,493.00	-204.55	484.91	202.77	12.00	12.00	0.00
Start 9513.84 hold at 6803.62 MD - 7" Csg.									
6,803.62	90.32	180.21	6,493.00	-208.17	484.90	206.39	11.99	11.99	0.00
6,900.00	90.32	180.21	6,492.46	-304.54	484.55	302.77	0.00	0.00	0.00
7,000.00	90.32	180.21	6,491.90	-404.54	484.19	402.76	0.00	0.00	0.00
7,100.00	90.32	180.21	6,491.35	-504.54	483.83	502.76	0.00	0.00	0.00
7,200.00	90.32	180.21	6,490.79	-604.54	483.47	602.76	0.00	0.00	0.00
7,300.00	90.32	180.21	6,490.23	-704.53	483.11	702.76	0.00	0.00	0.00
7,400.00	90.32	180.21	6,489.67	-804.53	482.76	802.76	0.00	0.00	0.00
7,500.00	90.32	180.21	6,489.12	-904.53	482.40	902.76	0.00	0.00	0.00
7,600.00	90.32	180.21	6,488.56	-1,004.53	482.04	1,002.75	0.00	0.00	0.00
7,700.00	90.32	180.21	6,488.00	-1,104.53	481.68	1,102.75	0.00	0.00	0.00
7,800.00	90.32	180.21	6,487.45	-1,204.52	481.32	1,202.75	0.00	0.00	0.00
7,900.00	90.32	180.21	6,486.89	-1,304.52	480.96	1,302.75	0.00	0.00	0.00
8,000.00	90.32	180.21	6,486.33	-1,404.52	480.60	1,402.75	0.00	0.00	0.00
8,100.00	90.32	180.21	6,485.78	-1,504.52	480.24	1,502.75	0.00	0.00	0.00
8,200.00	90.32	180.21	6,485.22	-1,604.51	479.88	1,602.74	0.00	0.00	0.00
8,300.00	90.32	180.21	6,484.66	-1,704.51	479.52	1,702.74	0.00	0.00	0.00
8,400.00	90.32	180.21	6,484.10	-1,804.51	479.17	1,802.74	0.00	0.00	0.00
8,500.00	90.32	180.21	6,483.55	-1,904.51	478.81	1,902.74	0.00	0.00	0.00
8,600.00	90.32	180.21	6,482.99	-2,004.51	478.45	2,002.74	0.00	0.00	0.00
8,700.00	90.32	180.21	6,482.43	-2,104.50	478.09	2,102.74	0.00	0.00	0.00
8,800.00	90.32	180.21	6,481.88	-2,204.50	477.73	2,202.74	0.00	0.00	0.00
8,900.00	90.32	180.21	6,481.32	-2,304.50	477.37	2,302.73	0.00	0.00	0.00
9,000.00	90.32	180.21	6,480.76	-2,404.50	477.01	2,402.73	0.00	0.00	0.00
9,100.00	90.32	180.21	6,480.20	-2,504.49	476.65	2,502.73	0.00	0.00	0.00
9,200.00	90.32	180.21	6,479.65	-2,604.49	476.29	2,602.73	0.00	0.00	0.00
9,300.00	90.32	180.21	6,479.09	-2,704.49	475.93	2,702.73	0.00	0.00	0.00
9,400.00	90.32	180.21	6,478.53	-2,804.49	475.58	2,802.73	0.00	0.00	0.00
9,500.00	90.32	180.21	6,477.98	-2,904.49	475.22	2,902.72	0.00	0.00	0.00
9,600.00	90.32	180.21	6,477.42	-3,004.48	474.86	3,002.72	0.00	0.00	0.00
9,700.00	90.32	180.21	6,476.86	-3,104.48	474.50	3,102.72	0.00	0.00	0.00
9,800.00	90.32	180.21	6,476.30	-3,204.48	474.14	3,202.72	0.00	0.00	0.00
9,900.00	90.32	180.21	6,475.75	-3,304.48	473.78	3,302.72	0.00	0.00	0.00
10,000.00	90.32	180.21	6,475.19	-3,404.47	473.42	3,402.72	0.00	0.00	0.00
10,100.00	90.32	180.21	6,474.63	-3,504.47	473.06	3,502.72	0.00	0.00	0.00
10,200.00	90.32	180.21	6,474.08	-3,604.47	472.70	3,602.71	0.00	0.00	0.00
10,300.00	90.32	180.21	6,473.52	-3,704.47	472.34	3,702.71	0.00	0.00	0.00
10,400.00	90.32	180.21	6,472.96	-3,804.47	471.99	3,802.71	0.00	0.00	0.00
10,500.00	90.32	180.21	6,472.40	-3,904.46	471.63	3,902.71	0.00	0.00	0.00
10,600.00	90.32	180.21	6,471.85	-4,004.46	471.27	4,002.71	0.00	0.00	0.00
10,700.00	90.32	180.21	6,471.29	-4,104.46	470.91	4,102.71	0.00	0.00	0.00
10,800.00	90.32	180.21	6,470.73	-4,204.46	470.55	4,202.70	0.00	0.00	0.00
10,900.00	90.32	180.21	6,470.18	-4,304.46	470.19	4,302.70	0.00	0.00	0.00
11,000.00	90.32	180.21	6,469.62	-4,404.45	469.83	4,402.70	0.00	0.00	0.00
11,100.00	90.32	180.21	6,469.06	-4,504.45	469.47	4,502.70	0.00	0.00	0.00

<b>Database:</b>	EDMDBBW	<b>Local Co-ordinate Reference:</b>	Well Will 6-62-15-0362BH2
<b>Company:</b>	Bill Barrett Corp.	<b>TVD Reference:</b>	WELL @ 4783.00usft (Original Well Elev)
<b>Project:</b>	Weld Co., CO	<b>MD Reference:</b>	WELL @ 4783.00usft (Original Well Elev)
<b>Site:</b>	Sec.15-T6N-R62W	<b>North Reference:</b>	True
<b>Well:</b>	Will 6-62-15-0362BH2	<b>Survey Calculation Method:</b>	Minimum Curvature
<b>Wellbore:</b>	Wellbore #1		
<b>Design:</b>	Design #1		

Planned Survey									
Measured Depth (usft)	Inclination (°)	Azimuth (°)	Vertical Depth (usft)	+N/-S (usft)	+E/-W (usft)	Vertical Section (usft)	Dogleg Rate (°/100usft)	Build Rate (°/100usft)	Turn Rate (°/100usft)
11,200.00	90.32	180.21	6,468.50	-4,604.45	469.11	4,602.70	0.00	0.00	0.00
11,300.00	90.32	180.21	6,467.95	-4,704.45	468.75	4,702.70	0.00	0.00	0.00
11,400.00	90.32	180.21	6,467.39	-4,804.44	468.40	4,802.70	0.00	0.00	0.00
11,500.00	90.32	180.21	6,466.83	-4,904.44	468.04	4,902.69	0.00	0.00	0.00
11,600.00	90.32	180.21	6,466.28	-5,004.44	467.68	5,002.69	0.00	0.00	0.00
11,700.00	90.32	180.21	6,465.72	-5,104.44	467.32	5,102.69	0.00	0.00	0.00
11,800.00	90.32	180.21	6,465.16	-5,204.44	466.96	5,202.69	0.00	0.00	0.00
11,900.00	90.32	180.21	6,464.61	-5,304.43	466.60	5,302.69	0.00	0.00	0.00
12,000.00	90.32	180.21	6,464.05	-5,404.43	466.24	5,402.69	0.00	0.00	0.00
12,100.00	90.32	180.21	6,463.49	-5,504.43	465.88	5,502.68	0.00	0.00	0.00
12,200.00	90.32	180.21	6,462.93	-5,604.43	465.52	5,602.68	0.00	0.00	0.00
12,300.00	90.32	180.21	6,462.38	-5,704.42	465.16	5,702.68	0.00	0.00	0.00
12,400.00	90.32	180.21	6,461.82	-5,804.42	464.81	5,802.68	0.00	0.00	0.00
12,500.00	90.32	180.21	6,461.26	-5,904.42	464.45	5,902.68	0.00	0.00	0.00
12,600.00	90.32	180.21	6,460.71	-6,004.42	464.09	6,002.68	0.00	0.00	0.00
12,700.00	90.32	180.21	6,460.15	-6,104.42	463.73	6,102.67	0.00	0.00	0.00
12,800.00	90.32	180.21	6,459.59	-6,204.41	463.37	6,202.67	0.00	0.00	0.00
12,900.00	90.32	180.21	6,459.03	-6,304.41	463.01	6,302.67	0.00	0.00	0.00
13,000.00	90.32	180.21	6,458.48	-6,404.41	462.65	6,402.67	0.00	0.00	0.00
13,100.00	90.32	180.21	6,457.92	-6,504.41	462.29	6,502.67	0.00	0.00	0.00
13,200.00	90.32	180.21	6,457.36	-6,604.40	461.93	6,602.67	0.00	0.00	0.00
13,300.00	90.32	180.21	6,456.81	-6,704.40	461.57	6,702.67	0.00	0.00	0.00
13,400.00	90.32	180.21	6,456.25	-6,804.40	461.22	6,802.66	0.00	0.00	0.00
13,500.00	90.32	180.21	6,455.69	-6,904.40	460.86	6,902.66	0.00	0.00	0.00
13,600.00	90.32	180.21	6,455.13	-7,004.40	460.50	7,002.66	0.00	0.00	0.00
13,700.00	90.32	180.21	6,454.58	-7,104.39	460.14	7,102.66	0.00	0.00	0.00
13,800.00	90.32	180.21	6,454.02	-7,204.39	459.78	7,202.66	0.00	0.00	0.00
13,900.00	90.32	180.21	6,453.46	-7,304.39	459.42	7,302.66	0.00	0.00	0.00
14,000.00	90.32	180.21	6,452.91	-7,404.39	459.06	7,402.65	0.00	0.00	0.00
14,100.00	90.32	180.21	6,452.35	-7,504.38	458.70	7,502.65	0.00	0.00	0.00
14,200.00	90.32	180.21	6,451.79	-7,604.38	458.34	7,602.65	0.00	0.00	0.00
14,300.00	90.32	180.21	6,451.23	-7,704.38	457.98	7,702.65	0.00	0.00	0.00
14,400.00	90.32	180.21	6,450.68	-7,804.38	457.63	7,802.65	0.00	0.00	0.00
14,500.00	90.32	180.21	6,450.12	-7,904.38	457.27	7,902.65	0.00	0.00	0.00
14,600.00	90.32	180.21	6,449.56	-8,004.37	456.91	8,002.65	0.00	0.00	0.00
14,700.00	90.32	180.21	6,449.01	-8,104.37	456.55	8,102.64	0.00	0.00	0.00
14,800.00	90.32	180.21	6,448.45	-8,204.37	456.19	8,202.64	0.00	0.00	0.00
14,900.00	90.32	180.21	6,447.89	-8,304.37	455.83	8,302.64	0.00	0.00	0.00
15,000.00	90.32	180.21	6,447.33	-8,404.37	455.47	8,402.64	0.00	0.00	0.00
15,100.00	90.32	180.21	6,446.78	-8,504.36	455.11	8,502.64	0.00	0.00	0.00
15,200.00	90.32	180.21	6,446.22	-8,604.36	454.75	8,602.64	0.00	0.00	0.00
15,300.00	90.32	180.21	6,445.66	-8,704.36	454.39	8,702.63	0.00	0.00	0.00
15,400.00	90.32	180.21	6,445.11	-8,804.36	454.03	8,802.63	0.00	0.00	0.00
15,500.00	90.32	180.21	6,444.55	-8,904.35	453.68	8,902.63	0.00	0.00	0.00
15,600.00	90.32	180.21	6,443.99	-9,004.35	453.32	9,002.63	0.00	0.00	0.00
15,700.00	90.32	180.21	6,443.44	-9,104.35	452.96	9,102.63	0.00	0.00	0.00
15,800.00	90.32	180.21	6,442.88	-9,204.35	452.60	9,202.63	0.00	0.00	0.00
15,900.00	90.32	180.21	6,442.32	-9,304.35	452.24	9,302.63	0.00	0.00	0.00
16,000.00	90.32	180.21	6,441.76	-9,404.34	451.88	9,402.62	0.00	0.00	0.00
16,100.00	90.32	180.21	6,441.21	-9,504.34	451.52	9,502.62	0.00	0.00	0.00
16,200.00	90.32	180.21	6,440.65	-9,604.34	451.16	9,602.62	0.00	0.00	0.00
16,300.00	90.32	180.21	6,440.09	-9,704.34	450.80	9,702.62	0.00	0.00	0.00
<b>TD at 16317.46</b>									
16,317.46	90.32	180.21	6,440.00	-9,721.79	450.74	9,720.08	0.00	0.00	0.00



<b>Database:</b>	EDMDBBW	<b>Local Co-ordinate Reference:</b>	Well Will 6-62-15-0362BH2
<b>Company:</b>	Bill Barrett Corp.	<b>TVD Reference:</b>	WELL @ 4783.00usft (Original Well Elev)
<b>Project:</b>	Weld Co., CO	<b>MD Reference:</b>	WELL @ 4783.00usft (Original Well Elev)
<b>Site:</b>	Sec.15-T6N-R62W	<b>North Reference:</b>	True
<b>Well:</b>	Will 6-62-15-0362BH2	<b>Survey Calculation Method:</b>	Minimum Curvature
<b>Wellbore:</b>	Wellbore #1		
<b>Design:</b>	Design #1		

Planned Survey									
Measured Depth (usft)	Inclination (°)	Azimuth (°)	Vertical Depth (usft)	+N/-S (usft)	+E/-W (usft)	Vertical Section (usft)	Dogleg Rate (°/100usft)	Build Rate (°/100usft)	Turn Rate (°/100usft)

Design Targets									
Target Name	Dip Angle (°)	Dip Dir. (°)	TVD (usft)	+N/-S (usft)	+E/-W (usft)	Northing (usft)	Easting (usft)	Latitude	Longitude
- hit/miss target									
- Shape									
Will 6-62-15-0362BH2 tc	0.00	0.00	6,440.00	-9,721.79	450.74	1,415,161.330	3,330,521.456	40° 28' 0.991 N	104° 18' 43.358 W
- plan hits target center									
- Point									

Casing Points					
Measured Depth (usft)	Vertical Depth (usft)	Name	Casing Diameter (")	Hole Diameter (")	
6,803.62	6,493.00	7" Csg.	7	8-3/4	

Formations						
Measured Depth (usft)	Vertical Depth (usft)	Name	Lithology	Dip (°)	Dip Direction (°)	
4,339.37	4,311.00	sussex		-0.32	180.21	
5,025.47	4,991.00	Shannon		-0.32	180.21	
6,298.54	6,251.00	Sharon Springs		-0.32	180.21	
6,414.27	6,344.00	Niobrara		-0.32	180.21	
6,464.97	6,379.00	A Chalk		-0.32	180.21	
6,500.30	6,401.00	A Marl		-0.32	180.21	
6,638.85	6,466.00	Top B2 Target		-0.32	180.21	

Plan Annotations					
Measured Depth (usft)	Vertical Depth (usft)	Local Coordinates		Comment	
		+N/-S (usft)	+E/-W (usft)		
900.00	900.00	0.00	0.00	Start Build 2.00	
1,274.46	1,273.39	11.92	21.33	Start 3902.04 hold at 1274.46 MD	
5,176.50	5,142.15	260.04	465.29	Start Drop -2.00	
5,550.96	5,515.54	271.96	486.62	Start 500.00 hold at 5550.96 MD	
6,050.96	6,015.54	271.96	486.62	Start Build 12.00	
6,803.62	6,493.00	-208.16	484.90	Start 9513.84 hold at 6803.62 MD	
16,317.46	6,440.00	-9,721.79	450.74	TD at 16317.46	