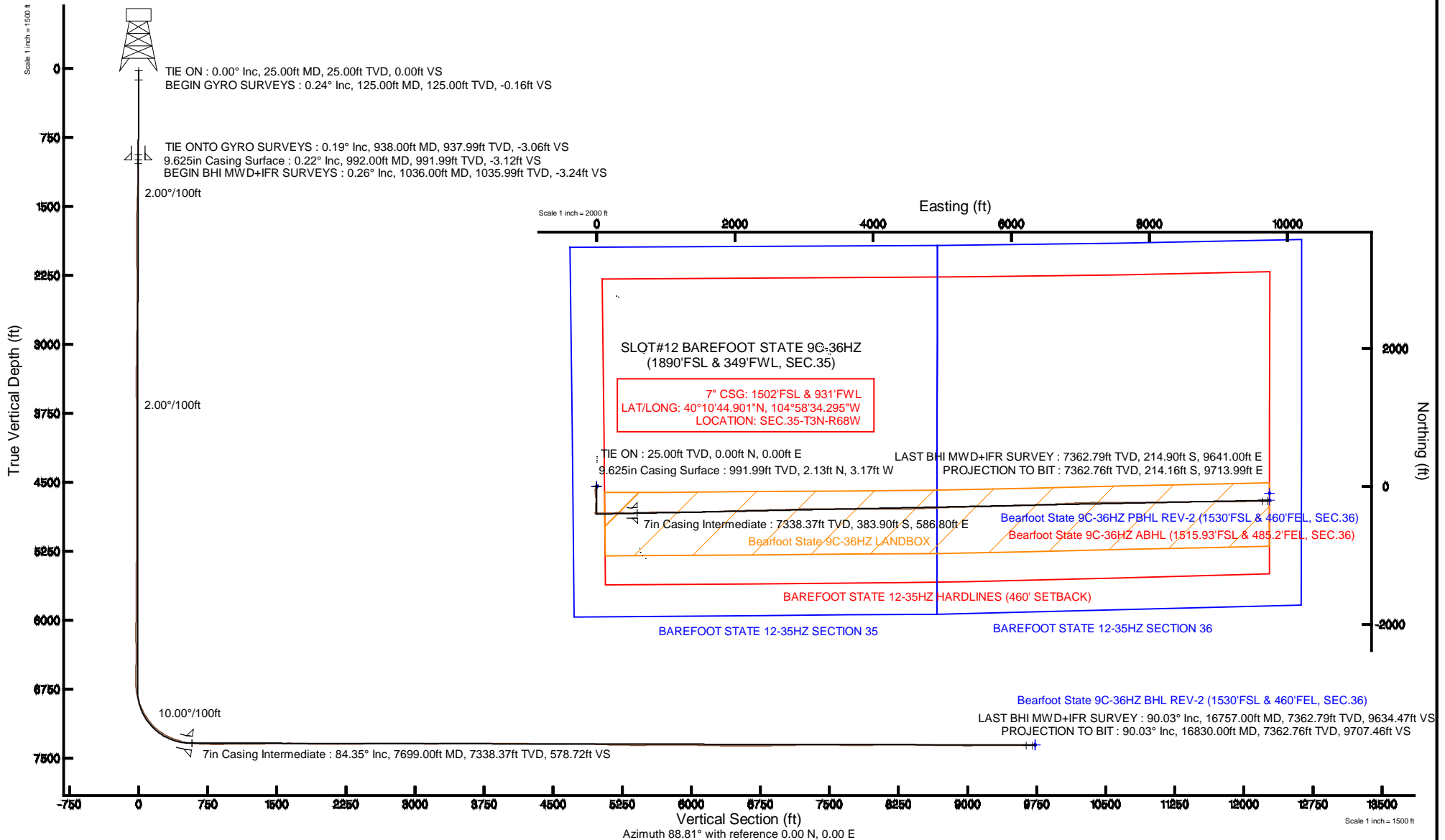


# KERR-MCGEE OIL & GAS ONSHORE LP

Location: COLORADO Slot: SLOT#12 BAREFOOT STATE 9C-36HZ (1890'FSL & 349'FWL, SEC.35)  
 Field: WELD COUNTY (KERR MCGEE) Well: BAREFOOT STATE 9C-36HZ  
 Facility: SEC.35-T3N-R68W Wellbore: BAREFOOT STATE 9C-36HZ PWB

Plot reference wellpath is BAREFOOT STATE 9C-36HZ (REV-A.1) PWP

True vertical depths are referenced to H&P 307 (25KB) (RKB)	Grid System: NAD83 / Lambert Colorado SP, Northern Zone (501), US feet
Measured depths are referenced to H&P 307 (25KB) (RKB)	North Reference: True north
H&P 307 (25KB) (RKB) to Mean Sea Level: 4886 feet	Scale: True distance
Mean Sea Level to Mud line (At Slot: SLOT#12 BAREFOOT STATE 9C-36HZ (1890'FSL & 349'FWL, SEC.35): 0 feet	Depths are in feet
Coordinates are in feet referenced to Slot	Created by: robiale01 on 12/06/2014



# Actual Wellpath Report

BAREFOOT STATE 9C-36HZ AWP

Page 1 of 7

REFERENCE WELLPATH IDENTIFICATION			
Operator	KERR-MCGEE OIL & GAS ONSHORE LP	Slot	SLOT#12 BAREFOOT STATE 9C-36HZ (1890'FSL & 349'FWL, SEC.35)
Area	COLORADO	Well	BAREFOOT STATE 9C-36HZ
Field	WELD COUNTY (KERR MCGEE)	Wellbore	BAREFOOT STATE 9C-36HZ AWB
Facility	SEC.35-T3N-R68W		

REPORT SETUP INFORMATION			
Projection System	NAD83 / Lambert Colorado SP, Northern Zone (501), US feet	Software System	WellArchitect® 4.0.0
North Reference	True	User	Robiale01
Scale	0.999958	Report Generated	12/Jun/2014 at 14:30
Convergence at slot	n/a	Database/Source file	WellArchitectDB/BAREFOOT_STATE_9C-36HZ_AWB.xml

WELLPATH LOCATION						
	Local coordinates		Grid coordinates		Geographic coordinates	
	North[ft]	East[ft]	Easting[US ft]	Northing[US ft]	Latitude	Longitude
Slot Location	-1980.66	-707.80	3145771.05	1308915.95	40°10'48.695"N	104°58'41.855"W
Facility Reference Pt			3146467.10	1310900.67	40°11'08.268"N	104°58'32.736"W
Field Reference Pt			<b>3197771.84</b>	<b>1268891.29</b>	40°04'09.600"N	104°47'36.000"W

WELLPATH DATUM			
Calculation method	Minimum curvature	H&P 307 (25'KB) (RKB) to Facility Vertical Datum	4886.00ft
Horizontal Reference Pt	Slot	H&P 307 (25'KB) (RKB) to Mean Sea Level	4886.00ft
Vertical Reference Pt	H&P 307 (25'KB) (RKB)	H&P 307 (25'KB) (RKB) to Mud Line at Slot (SLOT#12 BAREFOOT STATE 9C-36HZ (1890'FSL & 349'FWL, SEC.35))	4886.00ft
MD Reference Pt	H&P 307 (25'KB) (RKB)	Section Origin	N 0.00, E 0.00 ft
Field Vertical Reference	Mean Sea Level	Section Azimuth	91.26°

REFERENCE WELLPATH IDENTIFICATION			
Operator	KERR-MCGEE OIL & GAS ONSHORE LP	Slot	SLOT#12 BAREFOOT STATE 9C-36HZ (1890'FSL & 349'FWL, SEC.35)
Area	COLORADO	Well	BAREFOOT STATE 9C-36HZ
Field	WELD COUNTY (KERR MCGEE)	Wellbore	BAREFOOT STATE 9C-36HZ AWB
Facility	SEC.35-T3N-R68W		

### WELLPATH DATA (170 stations) † = interpolated/extrapolated station

MD [ft]	Inclination [°]	Azimuth [°]	TVD [ft]	Vert Sect [ft]	North [ft]	East [ft]	Latitude	Longitude	DLS [°/100ft]	Comments
0.00†	0.000	228.490	0.00	0.00	0.00	0.00	40°10'48.695"N	104°58'41.855"W	0.00	
25.00	0.000	228.490	25.00	0.00	0.00	0.00	40°10'48.695"N	104°58'41.855"W	0.00	TIE ON
125.00	0.240	228.490	125.00	-0.15	-0.14	-0.16	40°10'48.694"N	104°58'41.857"W	0.24	BEGIN GYRO SURVEYS
225.00	0.180	275.390	225.00	-0.46	-0.26	-0.47	40°10'48.692"N	104°58'41.861"W	0.18	
325.00	0.190	346.910	325.00	-0.66	-0.09	-0.66	40°10'48.694"N	104°58'41.864"W	0.22	
425.00	0.060	0.400	425.00	-0.70	0.13	-0.70	40°10'48.696"N	104°58'41.864"W	0.13	
525.00	0.240	275.720	525.00	-0.91	0.20	-0.91	40°10'48.697"N	104°58'41.867"W	0.24	
625.00	0.500	294.840	625.00	-1.52	0.40	-1.51	40°10'48.699"N	104°58'41.875"W	0.28	
725.00	0.490	301.320	724.99	-2.29	0.81	-2.27	40°10'48.703"N	104°58'41.884"W	0.06	
825.00	0.470	331.010	824.99	-2.87	1.39	-2.84	40°10'48.709"N	104°58'41.892"W	0.25	
925.00	0.200	342.210	924.99	-3.13	1.92	-3.09	40°10'48.714"N	104°58'41.895"W	0.28	
938.00	0.190	351.530	937.99	-3.14	1.96	-3.10	40°10'48.714"N	104°58'41.895"W	0.26	TIE ONTO GYRO SURVEYS
1036.00	0.260	314.480	1035.99	-3.33	2.28	-3.28	40°10'48.717"N	104°58'41.897"W	0.16	BEGIN BHI MWD+IFR SURVEYS
1097.00	0.660	228.100	1096.98	-3.69	2.14	-3.64	40°10'48.716"N	104°58'41.902"W	1.14	
1159.00	1.870	210.060	1158.97	-4.44	1.02	-4.42	40°10'48.705"N	104°58'41.912"W	2.03	
1220.00	2.750	215.360	1219.92	-5.74	-1.03	-5.76	40°10'48.685"N	104°58'41.929"W	1.48	
1281.00	4.360	208.080	1280.80	-7.60	-4.27	-7.70	40°10'48.653"N	104°58'41.954"W	2.74	
1343.00	5.930	202.180	1342.55	-9.81	-9.32	-10.02	40°10'48.603"N	104°58'41.984"W	2.67	
1404.00	6.520	202.800	1403.19	-12.21	-15.43	-12.55	40°10'48.543"N	104°58'42.017"W	0.97	
1513.00	6.570	191.440	1511.48	-15.58	-27.24	-16.19	40°10'48.426"N	104°58'42.064"W	1.19	
1608.00	7.250	189.230	1605.79	-17.37	-38.49	-18.23	40°10'48.315"N	104°58'42.090"W	0.77	
1699.00	7.790	182.650	1696.01	-18.32	-50.32	-19.43	40°10'48.198"N	104°58'42.105"W	1.12	
1791.00	8.430	182.910	1787.09	-18.66	-63.28	-20.06	40°10'48.070"N	104°58'42.113"W	0.70	
1883.00	10.000	178.140	1877.90	-18.42	-78.00	-20.14	40°10'47.924"N	104°58'42.115"W	1.90	
1975.00	9.730	181.690	1968.54	-18.04	-93.75	-20.12	40°10'47.769"N	104°58'42.114"W	0.72	
2067.00	10.320	170.140	2059.15	-16.51	-109.65	-18.93	40°10'47.611"N	104°58'42.099"W	2.27	
2159.00	9.720	166.450	2149.74	-12.94	-125.31	-15.70	40°10'47.457"N	104°58'42.057"W	0.95	
2251.00	9.930	174.680	2240.40	-10.04	-140.76	-13.15	40°10'47.304"N	104°58'42.024"W	1.54	
2342.00	10.690	177.270	2329.93	-8.55	-157.01	-12.02	40°10'47.143"N	104°58'42.010"W	0.98	
2434.00	10.450	175.910	2420.37	-7.18	-173.85	-11.02	40°10'46.977"N	104°58'41.997"W	0.38	
2525.00	10.440	179.540	2509.86	-6.16	-190.33	-10.36	40°10'46.814"N	104°58'41.988"W	0.72	
2618.00	9.980	179.930	2601.39	-5.72	-206.81	-10.28	40°10'46.651"N	104°58'41.987"W	0.50	
2709.00	9.060	179.120	2691.13	-5.27	-221.86	-10.16	40°10'46.503"N	104°58'41.986"W	1.02	
2803.00	10.180	186.270	2783.81	-5.72	-237.52	-10.96	40°10'46.348"N	104°58'41.996"W	1.74	
2896.00	9.390	186.640	2875.46	-7.15	-253.23	-12.73	40°10'46.193"N	104°58'42.019"W	0.85	
2990.00	10.310	183.530	2968.07	-8.20	-269.24	-14.14	40°10'46.034"N	104°58'42.037"W	1.13	
3083.00	9.500	183.550	3059.69	-8.83	-285.21	-15.12	40°10'45.877"N	104°58'42.050"W	0.87	
3176.00	9.320	180.670	3151.44	-9.06	-300.40	-15.69	40°10'45.726"N	104°58'42.057"W	0.54	
3270.00	10.310	181.630	3244.06	-9.04	-316.42	-16.02	40°10'45.568"N	104°58'42.061"W	1.07	
3364.00	8.730	182.720	3336.76	-9.27	-331.95	-16.59	40°10'45.415"N	104°58'42.069"W	1.69	
3458.00	7.100	176.960	3429.86	-9.02	-344.88	-16.62	40°10'45.287"N	104°58'42.069"W	1.93	
3552.00	5.930	174.630	3523.26	-8.02	-355.52	-15.86	40°10'45.182"N	104°58'42.059"W	1.28	
3647.00	5.670	171.170	3617.77	-6.63	-365.04	-14.68	40°10'45.088"N	104°58'42.044"W	0.46	
3742.00	5.400	172.110	3712.33	-5.10	-374.10	-13.35	40°10'44.998"N	104°58'42.027"W	0.30	
3836.00	4.300	183.440	3805.99	-4.53	-382.00	-12.95	40°10'44.920"N	104°58'42.022"W	1.55	

REFERENCE WELLPATH IDENTIFICATION			
Operator	KERR-MCGEE OIL & GAS ONSHORE LP	Slot	SLOT#12 BAREFOOT STATE 9C-36HZ (1890'FSL & 349'FWL, SEC.35)
Area	COLORADO	Well	BAREFOOT STATE 9C-36HZ
Field	WELD COUNTY (KERR MCGEE)	Wellbore	BAREFOOT STATE 9C-36HZ AWB
Facility	SEC.35-T3N-R68W		

### WELLPATH DATA (170 stations) † = interpolated/extrapolated station

MD [ft]	Inclination [°]	Azimuth [°]	TVD [ft]	Vert Sect [ft]	North [ft]	East [ft]	Latitude	Longitude	DLS [°/100ft]	Comments
3931.00	2.440	191.830	3900.82	-5.04	-387.54	-13.58	40°10'44.865"N	104°58'42.030"W	2.02	
4025.00	2.150	178.730	3994.75	-5.32	-391.26	-13.95	40°10'44.829"N	104°58'42.035"W	0.64	
4119.00	1.370	152.700	4088.70	-4.71	-394.02	-13.40	40°10'44.801"N	104°58'42.028"W	1.17	
4308.00	1.150	163.290	4277.66	-3.04	-397.84	-11.82	40°10'44.763"N	104°58'42.007"W	0.17	
4496.00	1.040	173.770	4465.63	-2.24	-401.35	-11.09	40°10'44.729"N	104°58'41.998"W	0.12	
4591.00	0.390	210.950	4560.62	-2.29	-402.48	-11.16	40°10'44.718"N	104°58'41.999"W	0.81	
4967.00	0.240	266.480	4936.61	-3.71	-403.63	-12.61	40°10'44.706"N	104°58'42.017"W	0.09	
5344.00	0.550	339.220	5313.60	-5.17	-401.98	-14.04	40°10'44.723"N	104°58'42.036"W	0.14	
5721.00	1.630	339.520	5690.53	-7.84	-395.27	-16.55	40°10'44.789"N	104°58'42.068"W	0.29	
6098.00	1.010	334.780	6067.43	-11.31	-387.24	-19.85	40°10'44.868"N	104°58'42.111"W	0.17	
6287.00	0.790	68.870	6256.41	-10.84	-385.26	-19.34	40°10'44.888"N	104°58'42.104"W	0.70	
6476.00	0.840	303.310	6445.41	-10.81	-384.03	-19.28	40°10'44.900"N	104°58'42.103"W	0.77	
6570.00	0.840	192.400	6539.40	-11.53	-384.33	-20.01	40°10'44.897"N	104°58'42.113"W	1.47	
6665.00	0.770	210.480	6634.39	-11.98	-385.56	-20.48	40°10'44.885"N	104°58'42.119"W	0.28	
6759.00	1.410	100.310	6728.38	-11.14	-386.31	-19.66	40°10'44.877"N	104°58'42.108"W	1.94	
6806.00	7.680	92.980	6775.21	-7.43	-386.58	-15.95	40°10'44.875"N	104°58'42.061"W	13.37	
6854.00	14.120	93.790	6822.32	1.64	-387.13	-6.90	40°10'44.869"N	104°58'41.944"W	13.42	
6901.00	16.450	95.030	6867.65	14.01	-388.09	5.45	40°10'44.860"N	104°58'41.785"W	5.01	
6948.00	20.650	92.580	6912.20	28.94	-389.05	20.37	40°10'44.850"N	104°58'41.593"W	9.09	
6995.00	23.750	92.010	6955.71	46.69	-389.76	38.11	40°10'44.843"N	104°58'41.364"W	6.61	
7042.00	28.270	90.780	6997.94	67.30	-390.24	58.71	40°10'44.839"N	104°58'41.099"W	9.68	
7089.00	31.240	89.820	7038.74	90.62	-390.35	82.03	40°10'44.838"N	104°58'40.798"W	6.40	
7137.00	35.040	88.180	7078.93	116.83	-389.88	108.26	40°10'44.842"N	104°58'40.460"W	8.13	
7184.00	39.410	87.230	7116.34	145.20	-388.73	136.66	40°10'44.854"N	104°58'40.094"W	9.38	
7231.00	43.730	87.320	7151.50	176.30	-387.24	167.81	40°10'44.868"N	104°58'39.693"W	9.19	
7278.00	50.130	87.620	7183.58	210.54	-385.73	202.09	40°10'44.883"N	104°58'39.251"W	13.62	
7325.00	54.400	88.400	7212.33	247.64	-384.45	239.23	40°10'44.896"N	104°58'38.773"W	9.18	
7372.00	58.630	89.170	7238.26	286.80	-383.63	278.41	40°10'44.904"N	104°58'38.268"W	9.10	
7420.00	63.290	90.100	7261.55	328.73	-383.37	320.36	40°10'44.907"N	104°58'37.728"W	9.85	
7467.00	67.600	90.640	7281.08	371.47	-383.65	363.10	40°10'44.904"N	104°58'37.177"W	9.23	
7514.00	70.600	91.440	7297.84	415.37	-384.45	406.99	40°10'44.896"N	104°58'36.612"W	6.58	
7561.00	72.430	91.150	7312.75	459.94	-385.45	451.56	40°10'44.886"N	104°58'36.037"W	3.94	
7608.00	76.670	89.840	7325.26	505.23	-385.84	496.85	40°10'44.882"N	104°58'35.454"W	9.41	
7647.00	82.360	88.650	7332.36	543.54	-385.33	535.17	40°10'44.887"N	104°58'34.960"W	14.89	
7699.00†	84.352	88.185	7338.37	595.12	-383.90	586.80	40°10'44.901"N	104°58'34.295"W	3.93	7" CASING POINT
7765.00	86.880	87.600	7343.42	660.81	-381.48	652.56	40°10'44.925"N	104°58'33.448"W	3.93	
7859.00	87.720	87.880	7347.85	754.53	-377.78	746.38	40°10'44.962"N	104°58'32.239"W	0.94	
7954.00	89.630	89.380	7350.04	849.39	-375.51	841.32	40°10'44.984"N	104°58'31.016"W	2.56	
8048.00	91.470	90.280	7349.14	943.35	-375.23	935.31	40°10'44.987"N	104°58'29.805"W	2.18	
8143.00	91.040	89.530	7347.06	1038.30	-375.07	1030.29	40°10'44.988"N	104°58'28.581"W	0.91	
8237.00	90.360	89.100	7345.91	1132.24	-373.95	1124.27	40°10'44.999"N	104°58'27.371"W	0.86	
8331.00	90.300	89.470	7345.37	1226.18	-372.78	1218.26	40°10'45.011"N	104°58'26.160"W	0.40	
8426.00	90.180	89.590	7344.97	1321.14	-372.00	1313.26	40°10'45.019"N	104°58'24.936"W	0.18	
8520.00	91.260	89.870	7343.79	1415.10	-371.56	1407.25	40°10'45.023"N	104°58'23.725"W	1.19	
8614.00	91.260	89.930	7341.73	1509.05	-371.39	1501.23	40°10'45.024"N	104°58'22.514"W	0.06	

REFERENCE WELLPATH IDENTIFICATION			
Operator	KERR-MCGEE OIL & GAS ONSHORE LP	Slot	SLOT#12 BAREFOOT STATE 9C-36HZ (1890'FSL & 349'FWL, SEC.35)
Area	COLORADO	Well	BAREFOOT STATE 9C-36HZ
Field	WELD COUNTY (KERR MCGEE)	Wellbore	BAREFOOT STATE 9C-36HZ AWB
Facility	SEC.35-T3N-R68W		

### WELLPATH DATA (170 stations)

MD [ft]	Inclination [°]	Azimuth [°]	TVD [ft]	Vert Sect [ft]	North [ft]	East [ft]	Latitude	Longitude	DLS [°/100ft]	Comments
8708.00	91.230	88.980	7339.68	1602.98	-370.50	1595.20	40°10'45.033"N	104°58'21.303"W	1.01	
8803.00	89.010	87.720	7339.48	1697.85	-367.76	1690.15	40°10'45.060"N	104°58'20.080"W	2.69	
8897.00	87.600	87.400	7342.26	1791.61	-363.76	1784.02	40°10'45.100"N	104°58'18.871"W	1.54	
8992.00	88.920	87.320	7345.15	1886.34	-359.39	1878.88	40°10'45.143"N	104°58'17.649"W	1.39	
9086.00	89.110	87.750	7346.77	1980.13	-355.35	1972.78	40°10'45.183"N	104°58'16.439"W	0.50	
9181.00	90.120	88.610	7347.40	2074.99	-352.33	2067.72	40°10'45.212"N	104°58'15.216"W	1.40	
9275.00	90.590	88.740	7346.82	2168.89	-350.16	2161.70	40°10'45.234"N	104°58'14.005"W	0.52	
9370.00	90.520	88.700	7345.90	2263.79	-348.03	2256.67	40°10'45.255"N	104°58'12.781"W	0.08	
9464.00	90.590	88.800	7344.99	2357.70	-345.98	2350.64	40°10'45.275"N	104°58'11.571"W	0.13	
9558.00	90.400	88.710	7344.18	2451.60	-343.94	2444.62	40°10'45.295"N	104°58'10.360"W	0.22	
9653.00	90.340	88.660	7343.56	2546.50	-341.76	2539.59	40°10'45.316"N	104°58'09.136"W	0.08	
9746.00	90.490	88.540	7342.89	2639.40	-339.49	2632.56	40°10'45.339"N	104°58'07.939"W	0.21	
9838.00	90.950	88.660	7341.74	2731.29	-337.24	2724.52	40°10'45.361"N	104°58'06.754"W	0.52	
9930.00	89.290	88.040	7341.54	2823.17	-334.59	2816.48	40°10'45.387"N	104°58'05.569"W	1.93	
10022.00	89.320	87.570	7342.66	2915.00	-331.07	2908.41	40°10'45.422"N	104°58'04.385"W	0.51	
10114.00	89.630	88.370	7343.50	3006.84	-327.81	3000.34	40°10'45.454"N	104°58'03.200"W	0.93	
10205.00	89.660	88.530	7344.07	3097.73	-325.35	3091.31	40°10'45.478"N	104°58'02.028"W	0.18	
10297.00	89.850	89.960	7344.46	3189.67	-324.14	3183.30	40°10'45.490"N	104°58'00.843"W	1.57	
10389.00	90.740	90.960	7343.98	3281.66	-324.87	3275.29	40°10'45.482"N	104°57'59.658"W	1.46	
10480.00	90.740	90.860	7342.81	3372.65	-326.32	3366.27	40°10'45.468"N	104°57'58.486"W	0.11	
10572.00	89.750	90.260	7342.42	3464.64	-327.22	3458.27	40°10'45.459"N	104°57'57.301"W	1.26	
10664.00	89.630	90.390	7342.91	3556.62	-327.74	3550.26	40°10'45.454"N	104°57'56.116"W	0.19	
10756.00	89.630	90.460	7343.51	3648.61	-328.42	3642.26	40°10'45.447"N	104°57'54.930"W	0.08	
10848.00	89.940	90.680	7343.85	3740.60	-329.34	3734.25	40°10'45.438"N	104°57'53.745"W	0.41	
10941.00	90.000	89.980	7343.90	3833.59	-329.87	3827.25	40°10'45.432"N	104°57'52.547"W	0.76	
11035.00	90.030	89.500	7343.88	3927.56	-329.45	3921.25	40°10'45.436"N	104°57'51.336"W	0.51	
11128.00	90.250	89.870	7343.65	4020.52	-328.94	4014.25	40°10'45.441"N	104°57'50.138"W	0.46	
11222.00	89.660	89.540	7343.72	4114.49	-328.45	4108.25	40°10'45.446"N	104°57'48.927"W	0.72	
11315.00	89.960	90.220	7344.03	4207.46	-328.26	4201.24	40°10'45.448"N	104°57'47.729"W	0.80	
11409.00	89.470	90.210	7344.50	4301.44	-328.61	4295.24	40°10'45.444"N	104°57'46.518"W	0.52	
11502.00	89.320	88.710	7345.48	4394.39	-327.73	4388.23	40°10'45.452"N	104°57'45.320"W	1.62	
11597.00	89.470	88.800	7346.49	4489.29	-325.67	4483.20	40°10'45.473"N	104°57'44.096"W	0.18	
11691.00	89.530	88.170	7347.31	4583.18	-323.18	4577.17	40°10'45.497"N	104°57'42.886"W	0.67	
11785.00	89.750	88.060	7347.90	4677.03	-320.09	4671.11	40°10'45.527"N	104°57'41.675"W	0.26	
11879.00	90.000	87.920	7348.10	4770.88	-316.80	4765.05	40°10'45.560"N	104°57'40.465"W	0.30	
11974.00	90.180	88.130	7347.95	4865.73	-313.52	4860.00	40°10'45.592"N	104°57'39.242"W	0.29	
12068.00	88.490	87.690	7349.04	4959.56	-310.09	4953.93	40°10'45.626"N	104°57'38.032"W	1.86	
12163.00	87.590	87.190	7352.29	5054.29	-305.85	5048.77	40°10'45.667"N	104°57'36.810"W	1.08	
12257.00	88.420	88.130	7355.56	5148.04	-302.02	5142.64	40°10'45.705"N	104°57'35.600"W	1.33	
12351.00	89.040	88.780	7357.65	5241.91	-299.48	5236.58	40°10'45.730"N	104°57'34.390"W	0.96	
12446.00	89.230	88.650	7359.08	5336.80	-297.35	5331.54	40°10'45.751"N	104°57'33.167"W	0.24	
12635.00	90.770	89.580	7359.08	5525.66	-294.44	5520.51	40°10'45.779"N	104°57'30.732"W	0.95	
12729.00	90.610	89.080	7357.95	5619.60	-293.34	5614.50	40°10'45.790"N	104°57'29.521"W	0.56	
12824.00	90.520	88.300	7357.01	5714.50	-291.16	5709.47	40°10'45.811"N	104°57'28.298"W	0.83	
12918.00	89.590	87.850	7356.92	5808.35	-288.01	5803.42	40°10'45.842"N	104°57'27.087"W	1.10	

REFERENCE WELLPATH IDENTIFICATION			
Operator	KERR-MCGEE OIL & GAS ONSHORE LP	Slot	SLOT#12 BAREFOOT STATE 9C-36HZ (1890'FSL & 349'FWL, SEC.35)
Area	COLORADO	Well	BAREFOOT STATE 9C-36HZ
Field	WELD COUNTY (KERR MCGEE)	Wellbore	BAREFOOT STATE 9C-36HZ AWB
Facility	SEC.35-T3N-R68W		

### WELLPATH DATA (170 stations)

MD [ft]	Inclination [°]	Azimuth [°]	TVD [ft]	Vert Sect [ft]	North [ft]	East [ft]	Latitude	Longitude	DLS [°/100ft]	Comments
13012.00	89.820	87.840	7357.41	5902.19	-284.47	5897.35	40°10'45.877"N	104°57'25.877"W	0.24	
13107.00	89.720	89.120	7357.79	5997.07	-281.95	5992.31	40°10'45.902"N	104°57'24.654"W	1.35	
13201.00	88.490	87.840	7359.26	6090.94	-279.46	6086.26	40°10'45.926"N	104°57'23.443"W	1.89	
13295.00	88.890	88.170	7361.41	6184.77	-276.19	6180.18	40°10'45.958"N	104°57'22.233"W	0.55	
13389.00	88.740	87.880	7363.35	6278.60	-272.95	6274.11	40°10'45.990"N	104°57'21.023"W	0.35	
13484.00	89.010	87.860	7365.21	6373.41	-269.42	6369.02	40°10'46.025"N	104°57'19.800"W	0.28	
13578.00	89.970	87.530	7366.05	6467.23	-265.64	6462.94	40°10'46.062"N	104°57'18.590"W	1.08	
13672.00	90.220	87.360	7365.90	6561.02	-261.45	6556.85	40°10'46.103"N	104°57'17.380"W	0.32	
13766.00	89.970	86.640	7365.74	6654.76	-256.53	6650.72	40°10'46.151"N	104°57'16.171"W	0.81	
13860.00	90.680	87.670	7365.21	6748.51	-251.86	6744.60	40°10'46.197"N	104°57'14.961"W	1.33	
13954.00	90.310	87.160	7364.39	6842.29	-247.62	6838.50	40°10'46.239"N	104°57'13.752"W	0.67	
14048.00	90.490	87.360	7363.74	6936.06	-243.13	6932.39	40°10'46.283"N	104°57'12.542"W	0.29	
14142.00	91.390	88.430	7362.20	7029.89	-239.68	7026.31	40°10'46.317"N	104°57'11.332"W	1.49	
14237.00	91.510	88.910	7359.79	7124.76	-237.47	7121.25	40°10'46.338"N	104°57'10.109"W	0.52	
14331.00	90.400	89.830	7358.23	7218.69	-236.44	7215.23	40°10'46.348"N	104°57'08.898"W	1.53	
14426.00	90.090	90.070	7357.82	7313.66	-236.36	7310.23	40°10'46.349"N	104°57'07.674"W	0.41	
14520.00	89.750	89.580	7357.95	7407.63	-236.07	7404.23	40°10'46.351"N	104°57'06.463"W	0.63	
14614.00	89.750	89.830	7358.36	7501.60	-235.59	7498.23	40°10'46.356"N	104°57'05.252"W	0.27	
14709.00	89.570	89.680	7358.92	7596.56	-235.18	7593.23	40°10'46.359"N	104°57'04.028"W	0.25	
14897.00	89.780	89.430	7359.99	7784.48	-233.72	7781.22	40°10'46.373"N	104°57'01.606"W	0.17	
15086.00	90.640	89.950	7359.30	7973.40	-232.70	7970.21	40°10'46.383"N	104°56'59.171"W	0.53	
15180.00	90.300	89.540	7358.53	8067.37	-232.28	8064.21	40°10'46.387"N	104°56'57.960"W	0.57	
15275.00	90.150	89.300	7358.15	8162.32	-231.32	8159.20	40°10'46.396"N	104°56'56.736"W	0.30	
15369.00	90.150	89.360	7357.91	8256.26	-230.22	8253.19	40°10'46.406"N	104°56'55.525"W	0.06	
15558.00	90.460	88.890	7356.90	8445.13	-227.33	8442.17	40°10'46.434"N	104°56'53.091"W	0.30	
15653.00	89.100	88.880	7357.27	8540.04	-225.48	8537.15	40°10'46.452"N	104°56'51.867"W	1.43	
15747.00	88.790	88.990	7359.00	8633.95	-223.74	8631.11	40°10'46.469"N	104°56'50.656"W	0.35	
15841.00	89.070	89.500	7360.75	8727.87	-222.50	8725.09	40°10'46.481"N	104°56'49.446"W	0.62	
16030.00	89.130	89.360	7363.72	8916.75	-220.62	8914.06	40°10'46.499"N	104°56'47.011"W	0.08	
16219.00	90.920	89.750	7363.64	9105.66	-219.15	9103.04	40°10'46.513"N	104°56'44.576"W	0.97	
16313.00	91.260	89.790	7361.85	9199.61	-218.77	9197.03	40°10'46.516"N	104°56'43.366"W	0.36	
16407.00	89.750	89.500	7361.02	9293.57	-218.19	9291.02	40°10'46.522"N	104°56'42.155"W	1.64	
16595.00	89.540	89.460	7362.19	9481.47	-216.48	9479.01	40°10'46.538"N	104°56'39.733"W	0.11	
16757.00	90.030	89.420	7362.79	9643.39	-214.90	9641.00	40°10'46.553"N	104°56'37.646"W	0.30	LAST BHI MWD+IFR SURVEY
16830.00	90.030	89.420	7362.76	9716.35	-214.16	9713.99	40°10'46.560"N	104°56'36.705"W	0.00	PROJECTION TO BIT

# Actual Wellpath Report

BAREFOOT STATE 9C-36HZ AWP

Page 6 of 7

REFERENCE WELLPATH IDENTIFICATION			
Operator	KERR-MCGEE OIL & GAS ONSHORE LP	Slot	SLOT#12 BAREFOOT STATE 9C-36HZ (1890'FSL & 349'FWL, SEC.35)
Area	COLORADO	Well	BAREFOOT STATE 9C-36HZ
Field	WELD COUNTY (KERR MCGEE)	Wellbore	BAREFOOT STATE 9C-36HZ AWB
Facility	SEC.35-T3N-R68W		

HOLE & CASING SECTIONS - Ref Wellbore: BAREFOOT STATE 9C-36HZ AWB Ref Wellpath: BAREFOOT STATE 9C-36HZ AWP									
String/Diameter	Start MD [ft]	End MD [ft]	Interval [ft]	Start TVD [ft]	End TVD [ft]	Start N/S [ft]	Start E/W [ft]	End N/S [ft]	End E/W [ft]
13.5in Open Hole	25.00	1002.00	977.00	25.00	1001.99	0.00	0.00	2.17	-3.19
9.625in Casing Surface	25.00	992.00	967.00	25.00	991.99	0.00	0.00	2.13	-3.17
8.75in Open Hole	1002.00	7710.00	6708.00	1001.99	7339.42	2.17	-3.19	-383.55	597.75
7in Casing Intermediate	25.00	7699.00	7674.00	25.00	7338.37	0.00	0.00	-383.90	586.80
6.125in Open Hole	7710.00	16830.00	9120.00	7339.42	7362.76	-383.55	597.75	-214.16	9713.99

WELLPATH COMPOSITION - Ref Wellbore: BAREFOOT STATE 9C-36HZ AWB Ref Wellpath: BAREFOOT STATE 9C-36HZ AWP				
Start MD [ft]	End MD [ft]	Positional Uncertainty Model	Log Name/Comment	Wellbore
25.00	938.00	Generic gyro - continuous (Standard)	MS GYRO SURVEYS <125-938>	BAREFOOT STATE 9C-36HZ AWB
938.00	7647.00	NaviTrak (IFR)	BHI NAVITRAK MWD+IFR 8 3/4" <1036-7647>	BAREFOOT STATE 9C-36HZ AWB
7647.00	16757.00	NaviTrak (IFR)	BHI NAVITRAK MWD+IFR 6 1/8" <7765-16757>	BAREFOOT STATE 9C-36HZ AWB
16757.00	16830.00	Blind Drilling (std)	Projection to bit	BAREFOOT STATE 9C-36HZ AWB

# Actual Wellpath Report

BAREFOOT STATE 9C-36HZ AWP

Page 7 of 7

## REFERENCE WELLPATH IDENTIFICATION

Operator	KERR-MCGEE OIL & GAS ONSHORE LP	Slot	SLOT#12 BAREFOOT STATE 9C-36HZ (1890'FSL & 349'FWL, SEC.35)
Area	COLORADO	Well	BAREFOOT STATE 9C-36HZ
Field	WELD COUNTY (KERR MCGEE)	Wellbore	BAREFOOT STATE 9C-36HZ AWB
Facility	SEC.35-T3N-R68W		

## WELLPATH COMMENTS

MD [ft]	Inclination [°]	Azimuth [°]	TVD [ft]	Comment
25.00	0.000	228.490	25.00	TIE ON
125.00	0.240	228.490	125.00	BEGIN GYRO SURVEYS
938.00	0.190	351.530	937.99	TIE ONTO GYRO SURVEYS
1036.00	0.260	314.480	1035.99	BEGIN BHI MWD+IFR SURVEYS
7699.00	84.352	88.185	7338.37	7" CASING POINT
16757.00	90.030	89.420	7362.79	LAST BHI MWD+IFR SURVEY
16830.00	90.030	89.420	7362.76	PROJECTION TO BIT