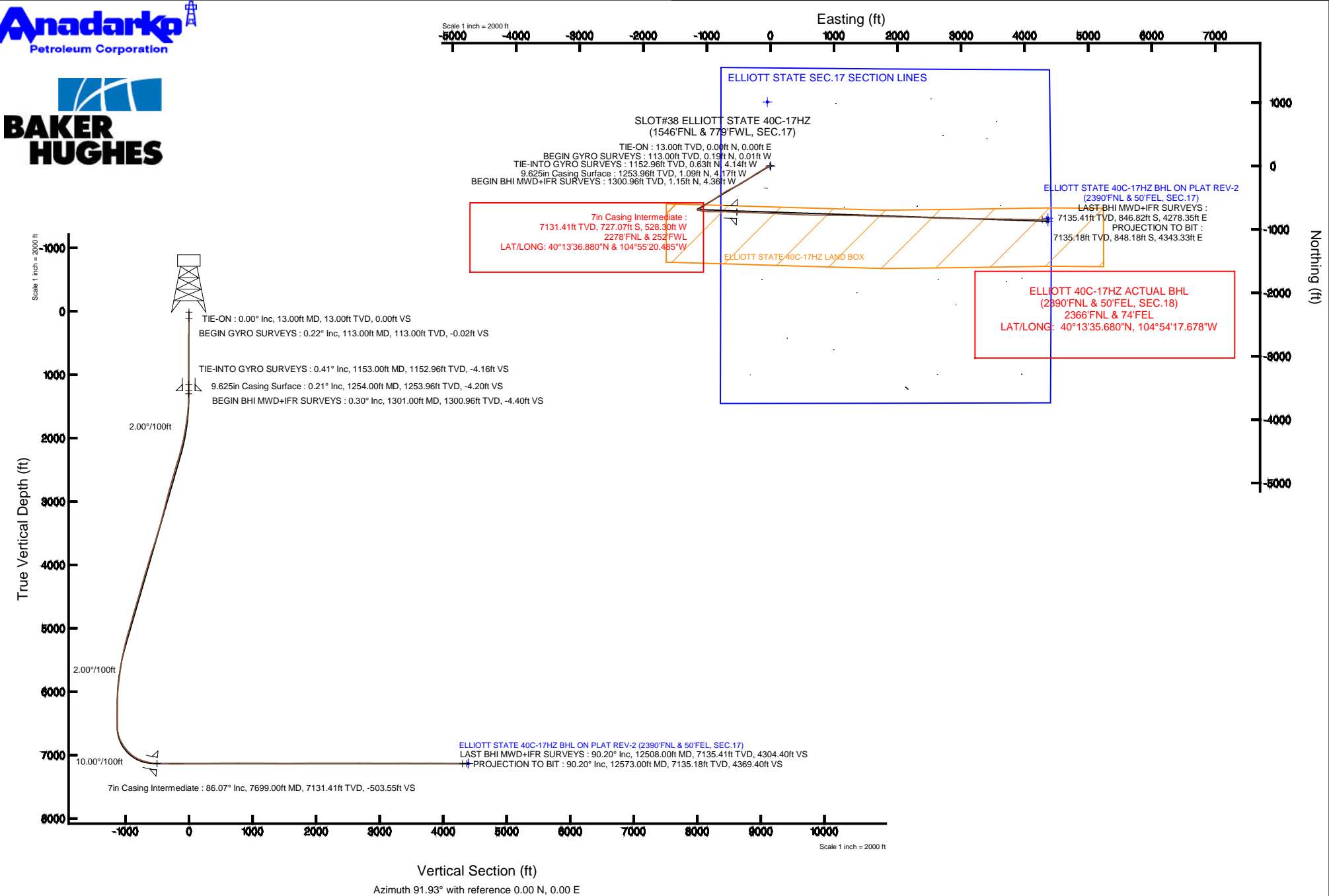


KERR-MCGEE OIL & GAS ONSHORE LP

Location: COLORADO Slot: SLOT#38 ELLIOTT STATE 40C-17HZ (1546'FNL & 779'FWL, SEC.17)
Field: WELD COUNTY (KERR MCGEE) Well: ELLIOTT STATE 40C-17HZ
Facility: SEC.17-T3N-R67W Wellbore: ELLIOTT STATE 40C-17HZ PWB

Plot reference wellpath is ELLIOTT STATE 40C-17HZ (REV-A.0) PWP	
True vertical depths are referenced to ENSIGN 138 (13' RKB) (RKB)	Grid System: NAD83 / Lambert Colorado SP, Northern Zone (501), US feet
Measured depths are referenced to ENSIGN 138 (13' RKB) (RKB)	North Reference: True north
ENSGN 138 (13' RKB) (RKB) to Mean Sea Level: 4825 feet	Scale: True distance
Mean Sea Level to Mud line (At Slot: SLOT#38 ELLIOTT STATE 40C-17HZ (1546'FNL & 779'FWL, SEC.17)): 0 feet	Depths are in feet
Coordinates are in feet referenced to Slot	Created by: ingmjarr on 6/18/2014



Actual Wellpath Report

ELLIOTT STATE 40C-17HZ AWP

Page 1 of 8

REFERENCE WELLPATH IDENTIFICATION

Operator	KERR-MCGEE OIL & GAS ONSHORE LP	Slot	SLOT#38 ELLIOTT STATE 40C-17HZ (1546'FNL & 779'FWL, SEC
Area	COLORADO	Well	ELLIOTT STATE 40C-17HZ
Field	WELD COUNTY (KERR MCGEE)	Wellbore	ELLIOTT STATE 40C-17HZ AWP
Facility	SEC.17-T3N-R67W		

REPORT SETUP INFORMATION

Projection System	NAD83 / Lambert Colorado SP, Northern Zone (501), US feet	Software System	WellArchitect® 4.0.0
North Reference	True	User	Ingmjmr
Scale	0.999957	Report Generated	6/18/2014 at 12:40:22 PM
Convergence at slot	n/a	Database/Source file	Anadarko Map Checks/ELLIOTT_STATE_40C-17HZ_AWP.xml

WELLPATH LOCATION

	Local coordinates		Grid coordinates		Geographic coordinates	
	North[ft]	East[ft]	Easting[US ft]	Northing[US ft]	Latitude	Longitude
Slot Location	17.10	-107.50	3161812.69	1326761.56	40°13'44.065"N	104°55'13.674"W
Facility Reference Pt			3161920.30	1326745.17	40°13'43.896"N	104°55'12.288"W
Field Reference Pt			3197771.84	1268891.29	40°04'09.600"N	104°47'36.000"W

WELLPATH DATUM

Calculation method	Minimum curvature	ENSIGN 138 (13' RKB) (RKB) to Facility Vertical Datum	4825.00ft
Horizontal Reference Pt	Slot	ENSIGN 138 (13' RKB) (RKB) to Mean Sea Level	4825.00ft
Vertical Reference Pt	ENSIGN 138 (13' RKB) (RKB)	ENSIGN 138 (13' RKB) (RKB) to Mud Line at Slot (SLOT#38 ELLIOTT STATE 40C-17HZ (1546'FNL & 779'FWL, SEC.17))	4825.00ft
MD Reference Pt	ENSIGN 138 (13' RKB) (RKB)	Section Origin	N 0.00, E 0.00 ft
Field Vertical Reference	Mean Sea Level	Section Azimuth	101.05°

REFERENCE WELLPATH IDENTIFICATION

Operator	KERR-MCGEE OIL & GAS ONSHORE LP	Slot	SLOT#38 ELLIOTT STATE 40C-17HZ (1546'FNL & 779'FWL, SEC
Area	COLORADO	Well	ELLIOTT STATE 40C-17HZ
Field	WELD COUNTY (KERR MCGEE)	Wellbore	ELLIOTT STATE 40C-17HZ AWP
Facility	SEC.17-T3N-R67W		

WELLPATH DATA (135 stations) † = interpolated/extrapolated station

MD [ft]	Inclination [°]	Azimuth [°]	TVD [ft]	Vert Sect [ft]	North [ft]	East [ft]	Latitude	Longitude	DLS [°/100ft]	Comments
0.00†	0.000	355.840	0.00	0.00	0.00	0.00	40°13'44.065"N	104°55'13.674"W	0.00	
13.00	0.000	355.840	13.00	0.00	0.00	0.00	40°13'44.065"N	104°55'13.674"W	0.00	TIE-ON
113.00	0.220	355.840	113.00	-0.05	0.19	-0.01	40°13'44.067"N	104°55'13.674"W	0.22	BEGIN GYRO SURVEYS
213.00	0.620	238.660	213.00	-0.50	0.10	-0.49	40°13'44.066"N	104°55'13.680"W	0.75	
313.00	0.810	262.780	312.99	-1.57	-0.27	-1.65	40°13'44.062"N	104°55'13.695"W	0.35	
413.00	0.710	287.800	412.98	-2.86	-0.17	-2.94	40°13'44.063"N	104°55'13.712"W	0.34	
513.00	0.550	15.410	512.98	-3.44	0.48	-3.41	40°13'44.070"N	104°55'13.718"W	0.88	
613.00	0.590	316.550	612.97	-3.82	1.32	-3.63	40°13'44.078"N	104°55'13.721"W	0.56	
713.00	0.370	100.080	712.97	-3.92	1.64	-3.67	40°13'44.081"N	104°55'13.721"W	0.91	
813.00	0.630	226.740	812.97	-3.91	1.20	-3.75	40°13'44.077"N	104°55'13.722"W	0.90	
913.00	0.350	111.140	912.97	-3.93	0.72	-3.87	40°13'44.072"N	104°55'13.724"W	0.84	
1013.00	0.380	166.270	1012.97	-3.49	0.29	-3.50	40°13'44.068"N	104°55'13.719"W	0.34	
1113.00	0.760	305.130	1112.96	-3.96	0.34	-3.97	40°13'44.068"N	104°55'13.725"W	1.08	
1153.00	0.410	18.420	1152.96	-4.18	0.63	-4.14	40°13'44.071"N	104°55'13.727"W	1.88	TIE-INTO GYRO SURVEYS
1301.00	0.300	271.600	1300.96	-4.50	1.15	-4.36	40°13'44.076"N	104°55'13.730"W	0.39	BEGIN BHI MWD+IFR SURVEYS
1395.00	1.800	282.200	1394.94	-6.22	1.47	-6.05	40°13'44.079"N	104°55'13.752"W	1.60	
1488.00	4.000	257.300	1487.82	-10.65	1.06	-10.64	40°13'44.075"N	104°55'13.811"W	2.67	
1583.00	6.200	252.000	1582.44	-18.17	-1.25	-18.75	40°13'44.053"N	104°55'13.916"W	2.37	
1675.00	7.900	249.600	1673.74	-27.90	-4.99	-29.40	40°13'44.016"N	104°55'14.053"W	1.87	
1767.00	9.900	241.500	1764.63	-39.40	-10.97	-42.28	40°13'43.957"N	104°55'14.219"W	2.56	
1858.00	11.600	238.900	1854.03	-52.21	-19.43	-56.99	40°13'43.873"N	104°55'14.409"W	1.94	
1950.00	12.900	237.000	1943.94	-66.45	-29.80	-73.53	40°13'43.771"N	104°55'14.622"W	1.48	
2042.00	14.600	238.700	2033.30	-82.40	-41.42	-92.05	40°13'43.656"N	104°55'14.861"W	1.90	
2134.00	16.200	239.200	2121.99	-100.53	-54.02	-112.98	40°13'43.531"N	104°55'15.131"W	1.75	
2225.00	17.900	238.500	2208.99	-120.29	-67.82	-135.81	40°13'43.395"N	104°55'15.425"W	1.88	
2317.00	19.400	239.900	2296.15	-142.22	-82.87	-161.09	40°13'43.246"N	104°55'15.751"W	1.70	
2409.00	19.500	240.100	2382.90	-165.32	-98.19	-187.62	40°13'43.095"N	104°55'16.093"W	0.13	
2591.00	20.000	235.900	2554.21	-210.21	-130.79	-239.72	40°13'42.773"N	104°55'16.765"W	0.83	
2774.00	18.700	235.600	2726.86	-252.87	-164.91	-289.85	40°13'42.435"N	104°55'17.411"W	0.71	
2866.00	19.800	236.000	2813.72	-274.22	-181.95	-314.93	40°13'42.267"N	104°55'17.734"W	1.20	

REFERENCE WELLPATH IDENTIFICATION

Operator	KERR-MCGEE OIL & GAS ONSHORE LP	Slot	SLOT#38 ELLIOTT STATE 40C-17HZ (1546'FNL & 779'FWL, SEC
Area	COLORADO	Well	ELLIOTT STATE 40C-17HZ
Field	WELD COUNTY (KERR MCGEE)	Wellbore	ELLIOTT STATE 40C-17HZ AWP
Facility	SEC.17-T3N-R67W		

WELLPATH DATA (135 stations)

MD [ft]	Inclination [°]	Azimuth [°]	TVD [ft]	Vert Sect [ft]	North [ft]	East [ft]	Latitude	Longitude	DLS [°/100ft]	Comments
3049.00	16.800	234.100	2987.45	-314.18	-214.80	-362.06	40°13'41.942"N	104°55'18.342"W	1.67	
3141.00	16.900	235.900	3075.50	-332.69	-230.09	-383.91	40°13'41.791"N	104°55'18.624"W	0.58	
3232.00	17.300	240.200	3162.48	-352.25	-244.23	-406.60	40°13'41.651"N	104°55'18.916"W	1.46	
3326.00	17.900	236.700	3252.08	-373.16	-259.11	-430.81	40°13'41.504"N	104°55'19.228"W	1.29	
3420.00	17.900	238.500	3341.53	-394.13	-274.59	-455.20	40°13'41.351"N	104°55'19.543"W	0.59	
3515.00	19.900	242.900	3431.41	-417.60	-289.58	-482.04	40°13'41.203"N	104°55'19.889"W	2.58	
3609.00	17.700	242.800	3520.39	-441.41	-303.41	-509.00	40°13'41.067"N	104°55'20.236"W	2.34	
3798.00	20.800	243.700	3698.80	-490.66	-331.41	-564.65	40°13'40.790"N	104°55'20.954"W	1.65	
3891.00	20.400	244.200	3785.85	-516.76	-345.79	-594.04	40°13'40.648"N	104°55'21.333"W	0.47	
3986.00	18.300	244.500	3875.48	-541.99	-359.41	-622.42	40°13'40.513"N	104°55'21.699"W	2.21	
4081.00	18.100	242.100	3965.73	-565.45	-372.74	-648.92	40°13'40.382"N	104°55'22.040"W	0.82	
4175.00	20.100	240.500	4054.55	-589.08	-387.53	-675.88	40°13'40.235"N	104°55'22.388"W	2.20	
4270.00	19.100	239.400	4144.05	-613.10	-403.48	-703.47	40°13'40.078"N	104°55'22.744"W	1.12	
4365.00	19.800	238.300	4233.62	-636.53	-419.85	-730.54	40°13'39.916"N	104°55'23.093"W	0.83	
4459.00	18.600	237.400	4322.39	-659.07	-436.29	-756.72	40°13'39.754"N	104°55'23.430"W	1.31	
4555.00	19.500	235.500	4413.14	-681.37	-453.61	-782.82	40°13'39.582"N	104°55'23.767"W	1.14	
4649.00	19.900	237.000	4501.64	-703.85	-471.21	-809.17	40°13'39.408"N	104°55'24.106"W	0.69	
4745.00	20.300	235.800	4591.79	-727.32	-489.47	-836.64	40°13'39.228"N	104°55'24.460"W	0.60	
4840.00	19.400	235.200	4681.14	-749.91	-507.74	-863.23	40°13'39.047"N	104°55'24.803"W	0.97	
4934.00	19.500	237.000	4769.78	-772.06	-525.19	-889.21	40°13'38.875"N	104°55'25.138"W	0.65	
5030.00	19.200	233.800	4860.36	-794.29	-543.24	-915.38	40°13'38.697"N	104°55'25.476"W	1.15	
5125.00	19.100	238.300	4950.11	-816.31	-560.64	-941.21	40°13'38.525"N	104°55'25.809"W	1.56	
5220.00	19.600	237.500	5039.74	-839.27	-577.37	-967.88	40°13'38.359"N	104°55'26.152"W	0.60	
5314.00	18.000	237.900	5128.72	-861.30	-593.56	-993.48	40°13'38.199"N	104°55'26.482"W	1.71	
5409.00	17.600	235.100	5219.18	-881.99	-609.58	-1017.69	40°13'38.041"N	104°55'26.795"W	0.99	
5503.00	16.200	234.400	5309.12	-900.88	-625.34	-1040.01	40°13'37.885"N	104°55'27.082"W	1.50	
5598.00	14.200	234.100	5400.79	-917.93	-639.89	-1060.23	40°13'37.741"N	104°55'27.343"W	2.11	
5692.00	13.000	233.800	5492.15	-932.98	-652.89	-1078.10	40°13'37.613"N	104°55'27.573"W	1.28	
5786.00	10.300	236.400	5584.21	-946.13	-663.79	-1093.63	40°13'37.505"N	104°55'27.774"W	2.93	
5880.00	8.700	238.000	5676.91	-957.31	-672.21	-1106.66	40°13'37.422"N	104°55'27.942"W	1.72	

Actual Wellpath Report

ELLIOTT STATE 40C-17HZ AWP

Page 4 of 8

REFERENCE WELLPATH IDENTIFICATION

Operator	KERR-MCGEE OIL & GAS ONSHORE LP	Slot	SLOT#38 ELLIOTT STATE 40C-17HZ (1546'FNL & 779'FWL, SEC
Area	COLORADO	Well	ELLIOTT STATE 40C-17HZ
Field	WELD COUNTY (KERR MCGEE)	Wellbore	ELLIOTT STATE 40C-17HZ AWB
Facility	SEC.17-T3N-R67W		

WELLPATH DATA (135 stations) † = interpolated/extrapolated station

MD [ft]	Inclination [°]	Azimuth [°]	TVD [ft]	Vert Sect [ft]	North [ft]	East [ft]	Latitude	Longitude	DLS [°/100ft]	Comments
5975.00	8.000	249.800	5770.91	-968.21	-678.30	-1118.96	40°13'37.362"N	104°55'28.100"W	1.94	
6069.00	7.200	263.700	5864.09	-979.43	-681.21	-1130.96	40°13'37.333"N	104°55'28.255"W	2.13	
6164.00	5.300	254.100	5958.53	-989.02	-683.06	-1141.09	40°13'37.315"N	104°55'28.385"W	2.28	
6259.00	3.200	257.500	6053.26	-995.36	-684.84	-1147.90	40°13'37.297"N	104°55'28.473"W	2.23	
6354.00	1.300	244.400	6148.18	-998.66	-685.88	-1151.46	40°13'37.287"N	104°55'28.519"W	2.06	
6543.00	1.400	230.300	6337.13	-1001.84	-688.28	-1155.17	40°13'37.263"N	104°55'28.567"W	0.18	
6637.00	1.000	60.800	6431.12	-1001.94	-688.61	-1155.34	40°13'37.260"N	104°55'28.569"W	2.54	
6731.00	1.500	91.700	6525.10	-1000.10	-688.25	-1153.40	40°13'37.264"N	104°55'28.544"W	0.87	
6826.00	8.200	105.500	6619.71	-992.11	-690.10	-1145.62	40°13'37.245"N	104°55'28.444"W	7.11	
6920.00	19.700	108.800	6710.79	-969.65	-697.02	-1124.09	40°13'37.177"N	104°55'28.166"W	12.26	
7015.00	28.700	105.700	6797.35	-930.97	-708.37	-1086.89	40°13'37.065"N	104°55'27.687"W	9.56	
7109.00	37.400	94.900	6876.14	-879.95	-716.94	-1036.58	40°13'36.980"N	104°55'27.038"W	11.15	
7203.00	42.600	92.200	6948.12	-820.09	-720.61	-976.30	40°13'36.944"N	104°55'26.261"W	5.83	
7297.00	53.500	88.000	7010.88	-751.62	-720.51	-906.53	40°13'36.945"N	104°55'25.361"W	12.06	
7392.00	64.900	89.300	7059.45	-672.05	-718.64	-825.08	40°13'36.963"N	104°55'24.311"W	12.06	
7487.00	73.900	92.200	7092.84	-584.65	-719.87	-736.27	40°13'36.951"N	104°55'23.166"W	9.89	
7581.00	78.800	91.800	7115.02	-494.47	-723.06	-645.01	40°13'36.920"N	104°55'21.990"W	5.23	
7645.00	81.900	91.900	7125.75	-432.19	-725.09	-581.95	40°13'36.900"N	104°55'21.177"W	4.85	
7699.00†	86.070	92.311	7131.41	-379.15	-727.07	-528.30	40°13'36.880"N	104°55'20.485"W	7.76	7" CASING POINT
7724.00	88.000	92.500	7132.70	-354.47	-728.12	-503.36	40°13'36.870"N	104°55'20.163"W	7.76	
7817.00	87.800	91.000	7136.11	-262.76	-730.95	-410.46	40°13'36.842"N	104°55'18.966"W	1.63	
7911.00	88.900	92.100	7138.81	-170.09	-733.50	-316.54	40°13'36.817"N	104°55'17.755"W	1.65	
8006.00	90.200	92.800	7139.56	-76.16	-737.56	-221.63	40°13'36.777"N	104°55'16.531"W	1.55	
8101.00	91.300	92.400	7138.32	17.80	-741.87	-126.74	40°13'36.734"N	104°55'15.308"W	1.23	
8198.00	91.300	92.300	7136.12	113.66	-745.84	-29.85	40°13'36.695"N	104°55'14.059"W	0.10	
8293.00	89.800	92.200	7135.20	207.53	-749.57	65.07	40°13'36.658"N	104°55'12.835"W	1.58	
8388.00	90.100	92.400	7135.29	301.43	-753.38	160.00	40°13'36.620"N	104°55'11.611"W	0.38	
8482.00	89.900	92.800	7135.29	394.40	-757.65	253.90	40°13'36.578"N	104°55'10.401"W	0.48	
8576.00	91.500	92.600	7134.14	487.40	-762.08	347.78	40°13'36.534"N	104°55'09.190"W	1.72	
8671.00	91.200	92.300	7131.90	581.30	-766.14	442.67	40°13'36.494"N	104°55'07.967"W	0.45	

Actual Wellpath Report

ELLIOTT STATE 40C-17HZ AWP

Page 5 of 8

REFERENCE WELLPATH IDENTIFICATION

Operator	KERR-MCGEE OIL & GAS ONSHORE LP	Slot	SLOT#38 ELLIOTT STATE 40C-17HZ (1546'FNL & 779'FWL, SEC
Area	COLORADO	Well	ELLIOTT STATE 40C-17HZ
Field	WELD COUNTY (KERR MCGEE)	Wellbore	ELLIOTT STATE 40C-17HZ AWP
Facility	SEC.17-T3N-R67W		

WELLPATH DATA (135 stations)

MD [ft]	Inclination [°]	Azimuth [°]	TVD [ft]	Vert Sect [ft]	North [ft]	East [ft]	Latitude	Longitude	DLS [°/100ft]	Comments
8765.00	90.800	91.800	7130.26	674.13	-769.50	536.60	40°13'36.461"N	104°55'06.756"W	0.68	
8859.00	91.100	91.400	7128.70	766.84	-772.12	630.55	40°13'36.435"N	104°55'05.545"W	0.53	
8954.00	89.900	90.400	7127.87	860.35	-773.61	725.53	40°13'36.420"N	104°55'04.320"W	1.64	
9047.00	89.800	90.500	7128.12	951.76	-774.34	818.52	40°13'36.413"N	104°55'03.121"W	0.15	
9142.00	89.500	90.700	7128.70	1045.19	-775.34	913.52	40°13'36.403"N	104°55'01.897"W	0.38	
9189.00	89.400	90.400	7129.15	1091.40	-775.79	960.51	40°13'36.399"N	104°55'01.291"W	0.67	
9237.00	89.400	90.900	7129.65	1138.60	-776.33	1008.51	40°13'36.393"N	104°55'00.672"W	1.04	
9284.00	89.500	90.800	7130.10	1184.86	-777.03	1055.50	40°13'36.386"N	104°55'00.066"W	0.30	
9331.00	89.400	90.800	7130.55	1231.11	-777.69	1102.49	40°13'36.380"N	104°54'59.460"W	0.21	
9378.00	89.300	90.800	7131.09	1277.35	-778.34	1149.49	40°13'36.373"N	104°54'58.854"W	0.21	
9425.00	89.200	90.800	7131.70	1323.60	-779.00	1196.48	40°13'36.367"N	104°54'58.249"W	0.21	
9521.00	89.000	90.700	7133.21	1418.04	-780.26	1292.46	40°13'36.354"N	104°54'57.011"W	0.23	
9615.00	88.900	91.500	7134.93	1510.61	-782.06	1386.42	40°13'36.336"N	104°54'55.800"W	0.86	
9710.00	90.100	91.900	7135.76	1604.34	-784.88	1481.38	40°13'36.308"N	104°54'54.576"W	1.33	
9805.00	90.600	92.200	7135.18	1698.17	-788.28	1576.31	40°13'36.275"N	104°54'53.352"W	0.61	
9900.00	91.400	92.500	7133.52	1792.06	-792.17	1671.22	40°13'36.236"N	104°54'52.128"W	0.90	
9996.00	91.700	92.000	7130.92	1886.90	-795.94	1767.11	40°13'36.199"N	104°54'50.892"W	0.61	
10090.00	90.200	91.500	7129.37	1979.65	-798.81	1861.05	40°13'36.171"N	104°54'49.681"W	1.68	
10186.00	90.700	91.300	7128.61	2074.29	-801.15	1957.02	40°13'36.147"N	104°54'48.443"W	0.56	
10281.00	89.300	91.100	7128.61	2167.88	-803.14	2051.99	40°13'36.128"N	104°54'47.219"W	1.49	
10375.00	89.600	91.000	7129.51	2260.45	-804.87	2145.97	40°13'36.110"N	104°54'46.007"W	0.34	
10470.00	90.500	91.500	7129.43	2354.06	-806.94	2240.95	40°13'36.090"N	104°54'44.783"W	1.08	
10564.00	89.700	91.900	7129.27	2446.81	-809.73	2334.91	40°13'36.062"N	104°54'43.572"W	0.95	
10658.00	90.200	92.100	7129.35	2539.64	-813.01	2428.85	40°13'36.030"N	104°54'42.360"W	0.57	
10754.00	90.600	92.500	7128.68	2634.52	-816.86	2524.77	40°13'35.992"N	104°54'41.124"W	0.59	
10848.00	90.300	92.000	7127.94	2727.41	-820.55	2618.69	40°13'35.955"N	104°54'39.913"W	0.62	
10942.00	89.400	91.600	7128.19	2820.19	-823.50	2712.65	40°13'35.926"N	104°54'38.702"W	1.05	
11036.00	88.600	91.000	7129.83	2912.82	-825.64	2806.61	40°13'35.905"N	104°54'37.490"W	1.06	
11131.00	89.300	91.200	7131.57	3006.37	-827.46	2901.57	40°13'35.886"N	104°54'36.266"W	0.77	
11225.00	90.100	91.400	7132.06	3099.01	-829.59	2995.54	40°13'35.865"N	104°54'35.054"W	0.88	

REFERENCE WELLPATH IDENTIFICATION

Operator	KERR-MCGEE OIL & GAS ONSHORE LP	Slot	SLOT#38 ELLIOTT STATE 40C-17HZ (1546'FNL & 779'FWL, SEC
Area	COLORADO	Well	ELLIOTT STATE 40C-17HZ
Field	WELD COUNTY (KERR MCGEE)	Wellbore	ELLIOTT STATE 40C-17HZ AWB
Facility	SEC.17-T3N-R67W		

WELLPATH DATA (135 stations)

MD [ft]	Inclination [°]	Azimuth [°]	TVD [ft]	Vert Sect [ft]	North [ft]	East [ft]	Latitude	Longitude	DLS [°/100ft]	Comments
11319.00	89.800	90.700	7132.14	3191.58	-831.31	3089.53	40°13'35.848"N	104°54'33.843"W	0.81	
11414.00	90.600	90.300	7131.81	3284.98	-832.14	3184.52	40°13'35.840"N	104°54'32.618"W	0.94	
11509.00	90.900	90.500	7130.57	3378.33	-832.81	3279.51	40°13'35.833"N	104°54'31.393"W	0.38	
11604.00	89.300	90.500	7130.40	3471.72	-833.64	3374.51	40°13'35.825"N	104°54'30.169"W	1.68	
11698.00	89.500	90.400	7131.39	3564.11	-834.37	3468.50	40°13'35.817"N	104°54'28.957"W	0.24	
11793.00	89.900	90.800	7131.88	3657.54	-835.37	3563.49	40°13'35.807"N	104°54'27.732"W	0.60	
11887.00	90.500	91.200	7131.56	3750.09	-837.01	3657.48	40°13'35.791"N	104°54'26.521"W	0.77	
11981.00	90.100	89.900	7131.06	3842.51	-837.91	3751.47	40°13'35.782"N	104°54'25.309"W	1.45	
12076.00	88.800	91.000	7131.98	3935.89	-838.66	3846.46	40°13'35.774"N	104°54'24.084"W	1.79	
12171.00	89.000	91.000	7133.80	4029.41	-840.32	3941.42	40°13'35.758"N	104°54'22.860"W	0.21	
12265.00	89.400	91.400	7135.11	4122.02	-842.28	4035.39	40°13'35.738"N	104°54'21.648"W	0.60	
12359.00	89.900	91.000	7135.69	4214.63	-844.25	4129.37	40°13'35.719"N	104°54'20.437"W	0.68	
12453.00	90.200	90.900	7135.60	4307.17	-845.81	4223.36	40°13'35.703"N	104°54'19.225"W	0.34	
12508.00	90.200	91.200	7135.41	4361.34	-846.82	4278.35	40°13'35.693"N	104°54'18.516"W	0.55	LAST BHI MWD+IFR SURVEYS
12573.00	90.200	91.200	7135.18	4425.38	-848.18	4343.33	40°13'35.680"N	104°54'17.678"W	0.00	PROJECTION TO BIT

HOLE & CASING SECTIONS - Ref Wellbore: ELLIOTT STATE 40C-17HZ AWB Ref Wellpath: ELLIOTT STATE 40C-17HZ AWP

String/Diameter	Start MD [ft]	End MD [ft]	Interval [ft]	Start TVD [ft]	End TVD [ft]	Start N/S [ft]	Start E/W [ft]	End N/S [ft]	End E/W [ft]
13.5in Open Hole	13.00	1254.00	1241.00	13.00	1253.96	0.00	0.00	1.09	-4.17
9.625in Casing Surface	13.00	1254.00	1241.00	13.00	1253.96	0.00	0.00	1.09	-4.17
8.75in Open Hole	1254.00	7709.00	6455.00	1253.96	7132.02	1.09	-4.17	-727.48	-518.33
7in Casing Intermediate	13.00	7699.00	7686.00	13.00	7131.41	0.00	0.00	-727.07	-528.30
6.125in Open Hole	7709.00	12573.00	4864.00	7132.02	7135.18	-727.48	-518.33	-848.18	4343.33

Actual Wellpath Report

ELLIOTT STATE 40C-17HZ AWP

Page 7 of 8

REFERENCE WELLPATH IDENTIFICATION

Operator	KERR-MCGEE OIL & GAS ONSHORE LP	Slot	SLOT#38 ELLIOTT STATE 40C-17HZ (1546'FNL & 779'FWL, SEC
Area	COLORADO	Well	ELLIOTT STATE 40C-17HZ
Field	WELD COUNTY (KERR MCGEE)	Wellbore	ELLIOTT STATE 40C-17HZ AWB
Facility	SEC.17-T3N-R67W		

TARGETS

Name	MD [ft]	TVD [ft]	North [ft]	East [ft]	Grid East [US ft]	Grid North [US ft]	Latitude	Longitude	Shape
ELLIOTT STATE 40C-17HZ BHL ON PLAT REV-1 (2340'FNL & 50'FEL, SEC.17)		7132.00	-821.82	4368.07	3166185.84	1325968.34	40°13'35.940"N	104°54'17.359"W	point
ELLIOTT STATE 40C-17HZ BHL ON PLAT REV-2 (2390'FNL & 50'FEL, SEC.17)		7132.00	-871.82	4368.07	3166186.17	1325918.35	40°13'35.446"N	104°54'17.359"W	point
ELLIOTT STATE SEC.17 SECTION LINES		7176.00	1009.50	-47.75	3161758.35	1327770.68	40°13'54.041"N	104°55'14.290"W	polygon
ELLIOTT STATE 40C-17HZ LAND BOX		7200.00	0.00	0.00	3161812.69	1326761.56	40°13'44.065"N	104°55'13.674"W	polygon

WELLPATH COMPOSITION - Ref Wellbore: ELLIOTT STATE 40C-17HZ AWB Ref Wellpath: ELLIOTT STATE 40C-17HZ AWP

Start MD [ft]	End MD [ft]	Positional Uncertainty Model	Log Name/Comment	Wellbore
13.00	1153.00	Generic gyro - continuous (Standard)	MS ENERGY GYRODATA SURVEYS <113-1153>	ELLIOTT STATE 40C-17HZ AWB
1153.00	7645.00	NaviTrak (IFR)	BHI MWD+IFR SURVEYS 8 3/4" HOLE <1301-7645>	ELLIOTT STATE 40C-17HZ AWB
7645.00	12508.00	NaviTrak (IFR)	BHI MWD+IFR SURVEYS 6 1/8" HOLE <7724-12508>	ELLIOTT STATE 40C-17HZ AWB
12508.00	12573.00	Blind Drilling (std)	Projection to bit	ELLIOTT STATE 40C-17HZ AWB

Actual Wellpath Report

ELLIOTT STATE 40C-17HZ AWP

Page 8 of 8

REFERENCE WELLPATH IDENTIFICATION

Operator	KERR-MCGEE OIL & GAS ONSHORE LP	Slot	SLOT#38 ELLIOTT STATE 40C-17HZ (1546'FNL & 779'FWL, SEC
Area	COLORADO	Well	ELLIOTT STATE 40C-17HZ
Field	WELD COUNTY (KERR MCGEE)	Wellbore	ELLIOTT STATE 40C-17HZ AWB
Facility	SEC.17-T3N-R67W		

WELLPATH COMMENTS

MD [ft]	Inclination [°]	Azimuth [°]	TVD [ft]	Comment
13.00	0.000	355.840	13.00	TIE-ON
113.00	0.220	355.840	113.00	BEGIN GYRO SURVEYS
1153.00	0.410	18.420	1152.96	TIE-INTO GYRO SURVEYS
1301.00	0.300	271.600	1300.96	BEGIN BHI MWD+IFR SURVEYS
7699.00	86.070	92.311	7131.41	7" CASING POINT
12508.00	90.200	91.200	7135.41	LAST BHI MWD+IFR SURVEYS
12573.00	90.200	91.200	7135.18	PROJECTION TO BIT