

BONANZA CREEK ENERGY INC.

WELD COUNTY, COLORADO (NAD 83)

SE SW SEC. 24 T5N R63W 6th P.M.

NORTH PLATTE O-K-24HC - OPT 4

ORIGINAL WELLBORE

11 June, 2014

Plan: PROPOSAL #4





Project: WELD COUNTY, COLORADO (NAD 83)
Site: SE SW SEC. 24 T5N R63W 6th P.M.
Well: NORTH PLATTE O-K-24HC - OPT 4
Wellbore: ORIGINAL WELLBORE
Design: PROPOSAL #4

ANNOTATIONS

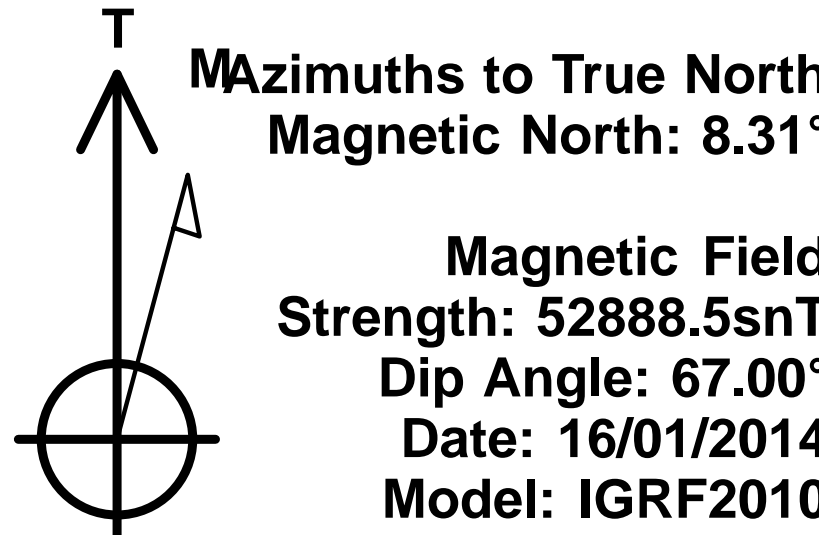
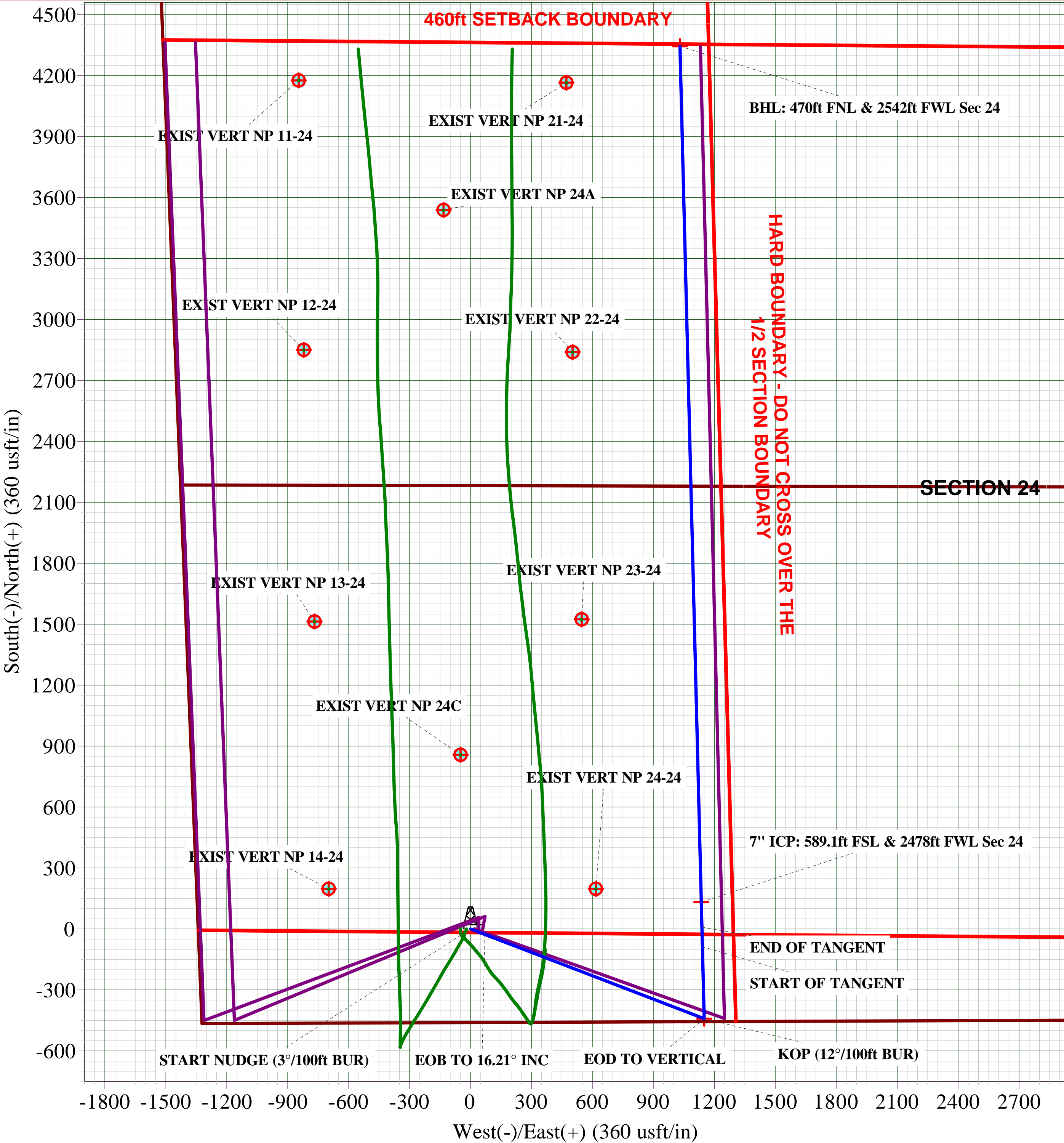
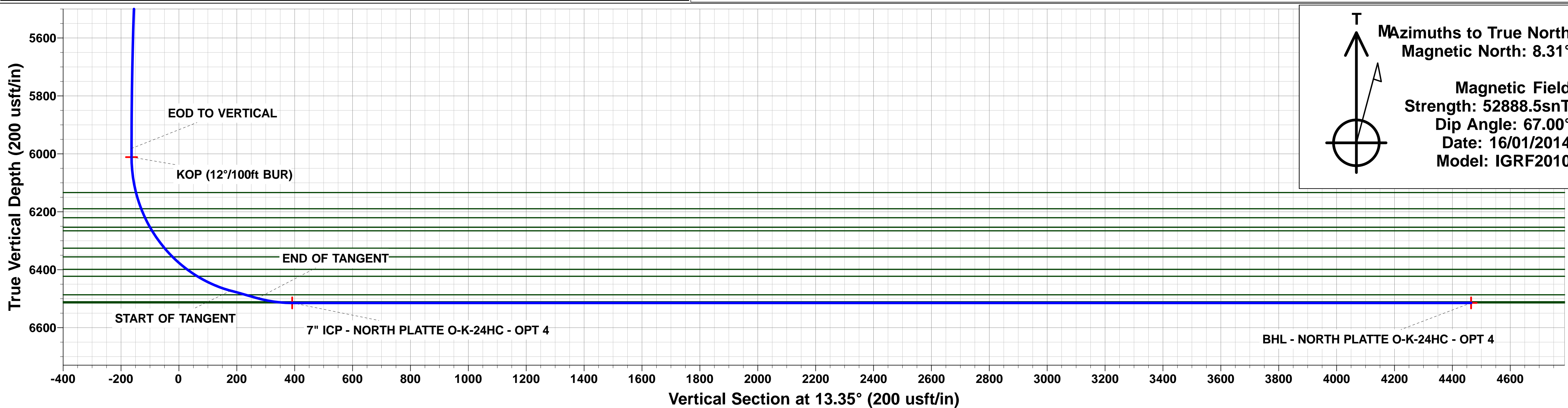
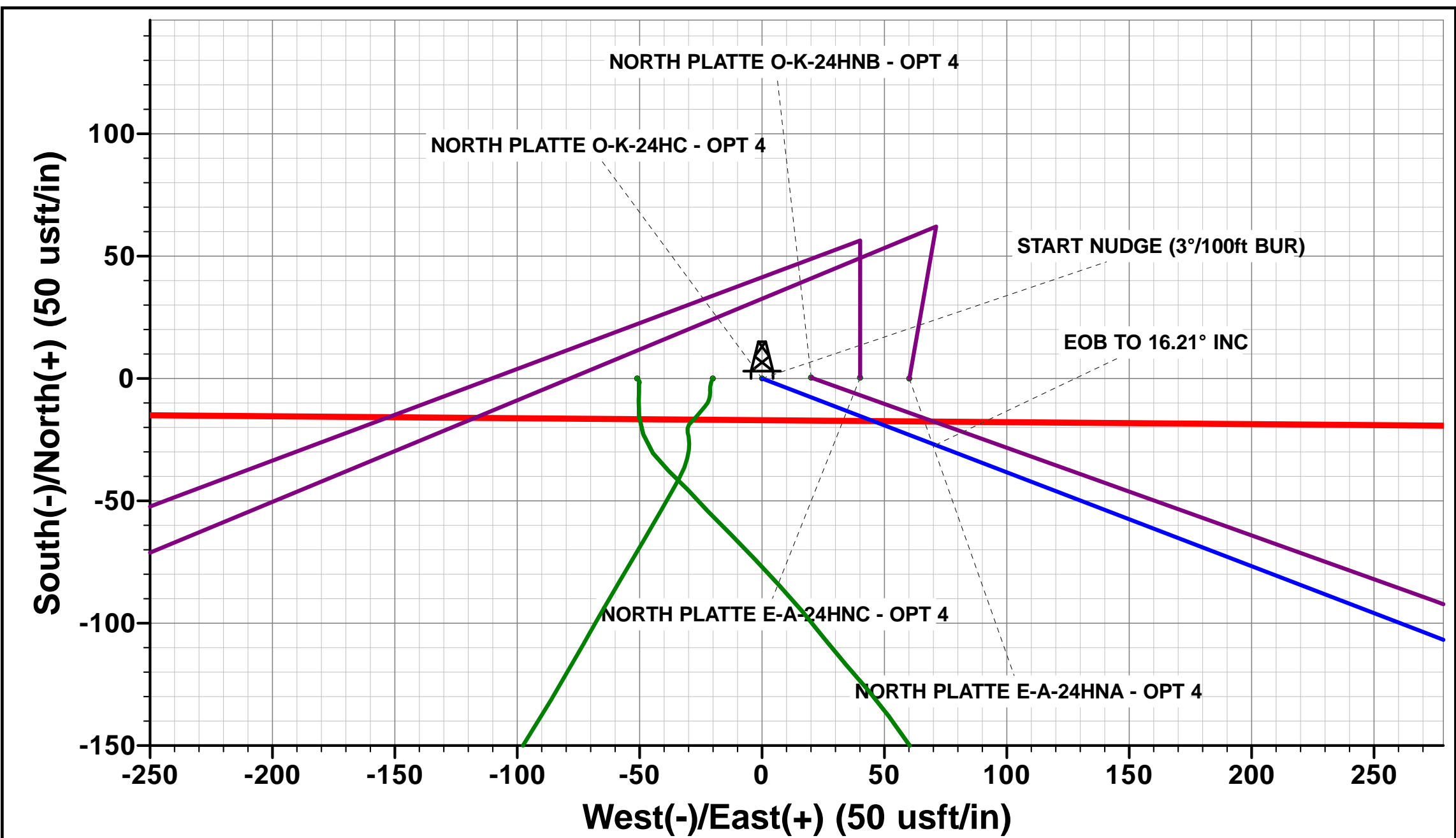
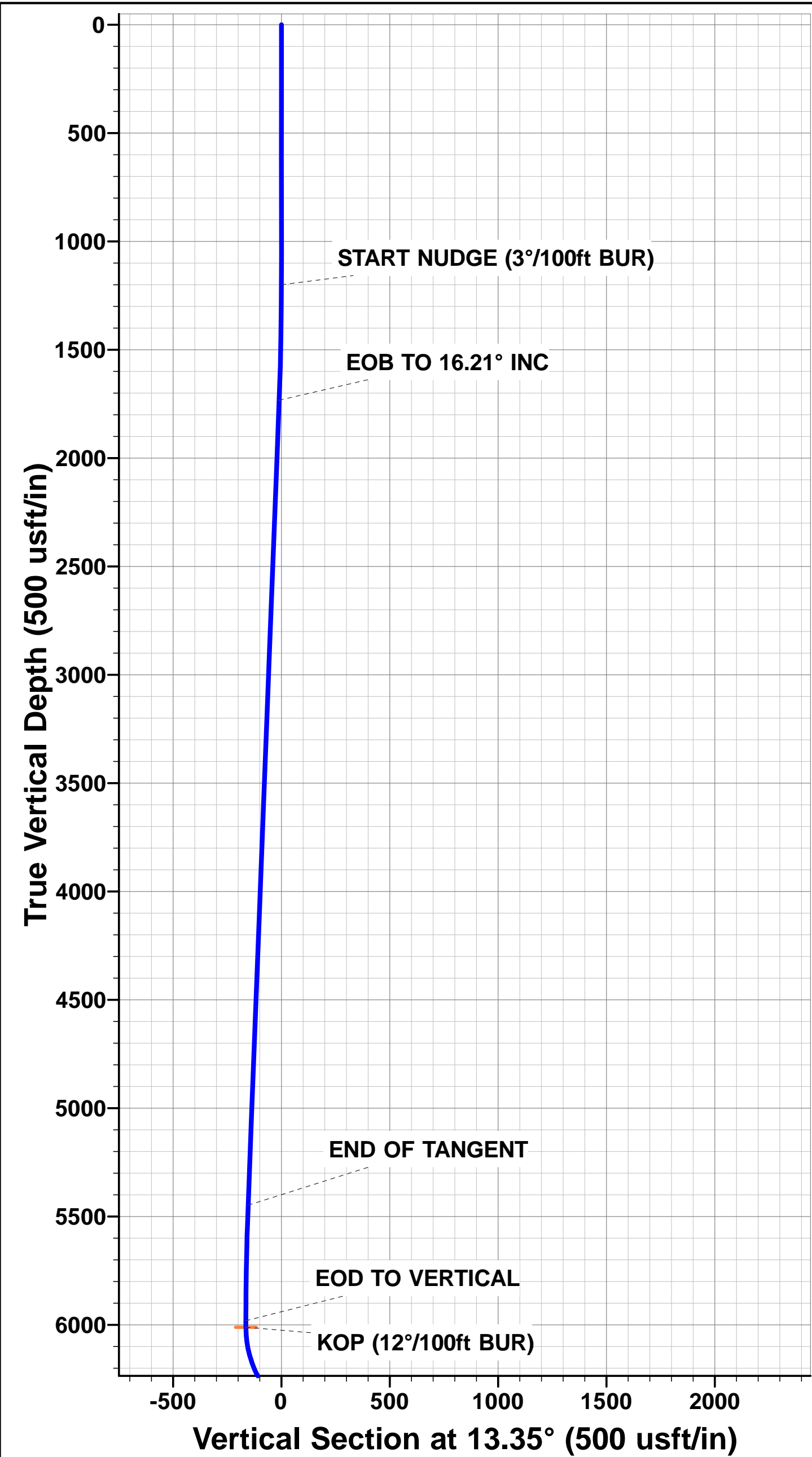
TVD	MD	Inc	Azi	+N/-S	+E/-W	VSec	Dep	Annotation
0.0	0.0	0.00	0.00	0.0	0.0	0.0	0.0	W/C: 461ft FSL & 1339ft FWL Sec 24
1200.0	1200.0	0.00	0.00	0.0	0.0	0.0	0.0	START NUDGE (3°/100ft BUR)
1733.1	1740.3	16.21	110.99	-27.2	70.9	-10.1	75.9	EOB TO 16.21° INC
5448.4	5609.4	16.21	110.99	-414.0	1079.3	-153.6	1155.9	END OF TANGENT
5981.5	6149.6	0.00	110.99	-441.2	1150.1	-163.7	1231.8	EOD TO VERTICAL
6011.5	6179.6	0.00	0.00	-441.2	1150.1	-163.7	1231.8	KOP (12°/100ft BUR)
6472.7	6804.6	74.99	358.57	-87.4	1141.3	178.5	1585.7	START OF TANGENT
6498.6	6904.6	75.00	358.57	9.1	1138.9	271.9	1682.3	END OF TANGENT
6514.8	7029.6	89.99	358.57	132.7	1135.8	391.4	1805.8	7" ICP: 589.1ft FSL & 2478ft FWL Sec 24
6514.8	11242.3	90.00	358.58	4344.1	1031.0	4464.7	6018.5	BHL: 470ft FNL & 2542ft FWL Sec 24

LOCAL COORDINATES:

SHL: 461ft FSL & 1339ft FWL Sec 24
7" ICP: ft 589.1ft FSL & 2478ft FWL Sec 24
BHL: 470ft FNL & 2542ft FWL Sec 24

WELLBORE TARGET DETAILS (LAT/LONG)

Name	TVD	+N/-S	+E/-W	Latitude	Longitude
KOP - NORTH PLATTE O-K-24HC - OPT 4	6011.5	-441.2	1150.1	40.377466	-104.384756
7" ICP - NORTH PLATTE O-K-24HC - OPT 4	6514.8	132.7	1135.8	40.379041	-104.384807
BHL - NORTH PLATTE O-K-24HC - OPT 4	6514.8	4344.1	1031.0	40.390601	-104.385183



Planning Report



Database:	EDM 5000.1 Single User Db	Local Co-ordinate Reference:	Well NORTH PLATTE O-K-24HC - OPT 4
Company:	BONANZA CREEK ENERGY INC.	TVD Reference:	KB-EST @ 4584.8usft
Project:	WELD COUNTY, COLORADO (NAD 83)	MD Reference:	KB-EST @ 4584.8usft
Site:	SE SW SEC. 24 T5N R63W 6th P.M.	North Reference:	True
Well:	NORTH PLATTE O-K-24HC - OPT 4	Survey Calculation Method:	Minimum Curvature
Wellbore:	ORIGINAL WELLBORE		
Design:	PROPOSAL #4		

Project	WELD COUNTY, COLORADO (NAD 83)		
Map System:	US State Plane 1983	System Datum:	Mean Sea Level
Geo Datum:	North American Datum 1983		
Map Zone:	Colorado Northern Zone		Using geodetic scale factor

Site	SE SW SEC. 24 T5N R63W 6th P.M.		
Site Position:		Northing:	1,382,731.88 usft
From:	Lat/Long	Easting:	3,309,546.55 usft
Position Uncertainty:	0.0 usft	Slot Radius:	1.10000 ft
		Latitude:	40.378677
		Longitude:	-104.388884
		Grid Convergence:	0.72 °

Well	NORTH PLATTE O-K-24HC - OPT 4		
Well Position	+N/-S	0.0 usft	Northing: 1,382,731.88 usft
	+E/-W	0.0 usft	Easting: 3,309,546.55 usft
Position Uncertainty	0.0 usft	Wellhead Elevation:	usft
		Latitude:	40.378677
		Longitude:	-104.388884
		Ground Level:	4,567.8 usft

Wellbore	ORIGINAL WELLBORE				
Magnetics	Model Name	Sample Date	Declination (°)	Dip Angle (°)	Field Strength (nT)
	IGRF2010	16/01/2014	8.31	67.00	52,888

Design	PROPOSAL #4			
Audit Notes:				
Version:	Phase:	PROTOTYPE	Tie On Depth:	0.0
Vertical Section:	Depth From (TVD) (usft)	+N/-S (usft)	+E/-W (usft)	Direction (°)
	0.0	0.0	0.0	13.35

Plan Sections											
MD (usft)	Inc (°)	Azi (°)	Vertical Depth	SS (usft)	+N/-S (usft)	+E/-W (usft)	Dogleg Rate (°/100usf)	Build Rate (°/100usf)	Turn Rate (°/100usf)	TFO (°)	Target
0.0	0.00	0.00	0.0	-4,584.8	0.0	0.0	0.00	0.00	0.00	0.00	
1,200.0	0.00	0.00	1,200.0	-3,384.8	0.0	0.0	0.00	0.00	0.00	0.00	
1,740.3	16.21	110.99	1,733.1	-2,851.7	-27.2	70.9	3.00	3.00	0.00	110.99	
5,609.4	16.21	110.99	5,448.4	863.6	-414.0	1,079.2	0.00	0.00	0.00	0.00	
6,149.6	0.00	0.00	5,981.5	1,396.7	-441.2	1,150.1	3.00	-3.00	0.00	180.00	
6,179.6	0.00	0.00	6,011.5	1,426.7	-441.2	1,150.1	0.00	0.00	0.00	0.00	KOP - NORTH PLA
6,804.6	75.00	358.57	6,472.7	1,887.9	-87.4	1,141.3	12.00	12.00	0.00	358.57	
6,904.6	75.00	358.57	6,498.6	1,913.8	9.2	1,138.9	0.00	0.00	0.00	0.00	
7,029.6	90.00	358.57	6,514.8	1,930.0	132.7	1,135.8	12.00	12.00	0.00	0.00	
11,242.3	90.00	358.58	6,514.8	1,930.0	4,344.1	1,031.0	0.00	0.00	0.00	80.73	BHL - NORTH PLA

Planning Report



Database:	EDM 5000.1 Single User Db	Local Co-ordinate Reference:	Well NORTH PLATTE O-K-24HC - OPT 4
Company:	BONANZA CREEK ENERGY INC.	TVD Reference:	KB-EST @ 4584.8usft
Project:	WELD COUNTY, COLORADO (NAD 83)	MD Reference:	KB-EST @ 4584.8usft
Site:	SE SW SEC. 24 T5N R63W 6th P.M.	North Reference:	True
Well:	NORTH PLATTE O-K-24HC - OPT 4	Survey Calculation Method:	Minimum Curvature
Wellbore:	ORIGINAL WELLBORE		
Design:	PROPOSAL #4		

Planned Survey

MD (usft)	Inc (°)	Azi (°)	TVD (usft)	SS (usft)	+N/-S (usft)	+E/-W (usft)	Vertical Section (usft)	Dogleg Rate (°/100usft)	Build Rate (°/100usft)	Turn Rate (°/100usft)
W/C: 461ft FSL & 1339ft FWL Sec 24										
0.0	0.00	0.00	0.0	4,584.80	0.0	0.0	0.0	0.00	0.00	0.00
100.0	0.00	0.00	100.0	4,484.80	0.0	0.0	0.0	0.00	0.00	0.00
200.0	0.00	0.00	200.0	4,384.80	0.0	0.0	0.0	0.00	0.00	0.00
300.0	0.00	0.00	300.0	4,284.80	0.0	0.0	0.0	0.00	0.00	0.00
400.0	0.00	0.00	400.0	4,184.80	0.0	0.0	0.0	0.00	0.00	0.00
500.0	0.00	0.00	500.0	4,084.80	0.0	0.0	0.0	0.00	0.00	0.00
600.0	0.00	0.00	600.0	3,984.80	0.0	0.0	0.0	0.00	0.00	0.00
700.0	0.00	0.00	700.0	3,884.80	0.0	0.0	0.0	0.00	0.00	0.00
800.0	0.00	0.00	800.0	3,784.80	0.0	0.0	0.0	0.00	0.00	0.00
900.0	0.00	0.00	900.0	3,684.80	0.0	0.0	0.0	0.00	0.00	0.00
1,000.0	0.00	0.00	1,000.0	3,584.80	0.0	0.0	0.0	0.00	0.00	0.00
1,100.0	0.00	0.00	1,100.0	3,484.80	0.0	0.0	0.0	0.00	0.00	0.00
START NUDGE (3°/100ft BUR)										
1,200.0	0.00	0.00	1,200.0	3,384.80	0.0	0.0	0.0	0.00	0.00	0.00
1,300.0	3.00	110.99	1,300.0	3,284.85	-0.9	2.4	-0.3	3.00	3.00	0.00
1,400.0	6.00	110.99	1,399.6	3,185.17	-3.7	9.8	-1.4	3.00	3.00	0.00
1,500.0	9.00	110.99	1,498.8	3,086.03	-8.4	22.0	-3.1	3.00	3.00	0.00
1,600.0	12.00	110.99	1,597.1	2,987.72	-14.9	39.0	-5.5	3.00	3.00	0.00
1,700.0	15.00	110.99	1,694.3	2,890.49	-23.3	60.8	-8.6	3.00	3.00	0.00
EOB TO 16.21° INC										
1,740.3	16.21	110.99	1,733.1	2,851.68	-27.2	70.9	-10.1	3.00	3.00	0.00
1,800.0	16.21	110.99	1,790.4	2,794.35	-33.2	86.4	-12.3	0.00	0.00	0.00
1,900.0	16.21	110.99	1,886.5	2,698.33	-43.2	112.5	-16.0	0.00	0.00	0.00
2,000.0	16.21	110.99	1,982.5	2,602.30	-53.1	138.6	-19.7	0.00	0.00	0.00
2,100.0	16.21	110.99	2,078.5	2,506.28	-63.1	164.6	-23.4	0.00	0.00	0.00
2,200.0	16.21	110.99	2,174.5	2,410.25	-73.1	190.7	-27.1	0.00	0.00	0.00
2,300.0	16.21	110.99	2,270.6	2,314.23	-83.1	216.8	-30.8	0.00	0.00	0.00
2,400.0	16.21	110.99	2,366.6	2,218.20	-93.1	242.8	-34.6	0.00	0.00	0.00
2,500.0	16.21	110.99	2,462.6	2,122.18	-103.1	268.9	-38.3	0.00	0.00	0.00
2,600.0	16.21	110.99	2,558.7	2,026.15	-113.1	294.9	-42.0	0.00	0.00	0.00
2,700.0	16.21	110.99	2,654.7	1,930.12	-123.1	321.0	-45.7	0.00	0.00	0.00
2,800.0	16.21	110.99	2,750.7	1,834.10	-133.1	347.1	-49.4	0.00	0.00	0.00
2,900.0	16.21	110.99	2,846.7	1,738.07	-143.1	373.1	-53.1	0.00	0.00	0.00
3,000.0	16.21	110.99	2,942.8	1,642.05	-153.1	399.2	-56.8	0.00	0.00	0.00
3,100.0	16.21	110.99	3,038.8	1,546.02	-163.1	425.2	-60.5	0.00	0.00	0.00
3,200.0	16.21	110.99	3,134.8	1,450.00	-173.1	451.3	-64.2	0.00	0.00	0.00
3,300.0	16.21	110.99	3,230.8	1,353.97	-183.1	477.4	-67.9	0.00	0.00	0.00
3,400.0	16.21	110.99	3,326.9	1,257.95	-193.1	503.4	-71.6	0.00	0.00	0.00
PARKMAN										
3,452.0	16.21	110.99	3,376.8	1,208.00	-198.3	517.0	-73.6	0.00	0.00	0.00
3,500.0	16.21	110.99	3,422.9	1,161.92	-203.1	529.5	-75.3	0.00	0.00	0.00
3,600.0	16.21	110.99	3,518.9	1,065.90	-213.1	555.6	-79.1	0.00	0.00	0.00
3,700.0	16.21	110.99	3,614.9	969.87	-223.1	581.6	-82.8	0.00	0.00	0.00
3,800.0	16.21	110.99	3,711.0	873.85	-233.1	607.7	-86.5	0.00	0.00	0.00
3,900.0	16.21	110.99	3,807.0	777.82	-243.1	633.7	-90.2	0.00	0.00	0.00
4,000.0	16.21	110.99	3,903.0	681.80	-253.1	659.8	-93.9	0.00	0.00	0.00
4,100.0	16.21	110.99	3,999.0	585.77	-263.1	685.9	-97.6	0.00	0.00	0.00
4,200.0	16.21	110.99	4,095.1	489.75	-273.1	711.9	-101.3	0.00	0.00	0.00
4,300.0	16.21	110.99	4,191.1	393.72	-283.1	738.0	-105.0	0.00	0.00	0.00
4,400.0	16.21	110.99	4,287.1	297.70	-293.1	764.1	-108.7	0.00	0.00	0.00
4,500.0	16.21	110.99	4,383.1	201.67	-303.1	790.1	-112.4	0.00	0.00	0.00
4,600.0	16.21	110.99	4,479.2	105.65	-313.1	816.2	-116.1	0.00	0.00	0.00
4,700.0	16.21	110.99	4,575.2	9.62	-323.1	842.2	-119.8	0.00	0.00	0.00

Planning Report



Database:	EDM 5000.1 Single User Db	Local Co-ordinate Reference:	Well NORTH PLATTE O-K-24HC - OPT 4
Company:	BONANZA CREEK ENERGY INC.	TVD Reference:	KB-EST @ 4584.8usft
Project:	WELD COUNTY, COLORADO (NAD 83)	MD Reference:	KB-EST @ 4584.8usft
Site:	SE SW SEC. 24 T5N R63W 6th P.M.	North Reference:	True
Well:	NORTH PLATTE O-K-24HC - OPT 4	Survey Calculation Method:	Minimum Curvature
Wellbore:	ORIGINAL WELLBORE		
Design:	PROPOSAL #4		

Planned Survey										
MD (usft)	Inc (°)	Azi (°)	TVD (usft)	SS (usft)	+N/-S (usft)	+E/-W (usft)	Vertical Section (usft)	Dogleg Rate (°/100usft)	Build Rate (°/100usft)	Turn Rate (°/100usft)
4,800.0	16.21	110.99	4,671.2	-86.40	-333.1	868.3	-123.6	0.00	0.00	0.00
4,900.0	16.21	110.99	4,767.2	-182.43	-343.1	894.4	-127.3	0.00	0.00	0.00
5,000.0	16.21	110.99	4,863.3	-278.45	-353.1	920.4	-131.0	0.00	0.00	0.00
5,100.0	16.21	110.99	4,959.3	-374.48	-363.0	946.5	-134.7	0.00	0.00	0.00
5,200.0	16.21	110.99	5,055.3	-470.50	-373.0	972.6	-138.4	0.00	0.00	0.00
5,300.0	16.21	110.99	5,151.3	-566.53	-383.0	998.6	-142.1	0.00	0.00	0.00
5,400.0	16.21	110.99	5,247.4	-662.55	-393.0	1,024.7	-145.8	0.00	0.00	0.00
5,500.0	16.21	110.99	5,343.4	-758.58	-403.0	1,050.7	-149.5	0.00	0.00	0.00
5,600.0	16.21	110.99	5,439.4	-854.60	-413.0	1,076.8	-153.2	0.00	0.00	0.00
END OF TANGENT										
5,609.4	16.21	110.99	5,448.4	-863.63	-414.0	1,079.3	-153.6	0.00	0.00	0.00
5,700.0	13.49	110.99	5,536.0	-951.20	-422.3	1,100.9	-156.7	3.00	-3.00	0.00
5,800.0	10.49	110.99	5,633.8	-1,049.01	-429.7	1,120.3	-159.4	3.00	-3.00	0.00
5,900.0	7.49	110.99	5,732.6	-1,147.77	-435.3	1,134.9	-161.5	3.00	-3.00	0.00
6,000.0	4.49	110.99	5,832.0	-1,247.21	-439.1	1,144.6	-162.9	3.00	-3.00	0.00
6,100.0	1.49	110.99	5,931.9	-1,347.06	-440.9	1,149.5	-163.6	3.00	-3.00	0.00
EOD TO VERTICAL										
6,149.6	0.00	110.99	5,981.5	-1,396.66	-441.2	1,150.1	-163.7	3.00	-3.00	0.00
KOP (12°/100ft BUR)										
6,179.6	0.00	0.00	6,011.5	-1,426.66	-441.2	1,150.1	-163.7	0.00	0.00	0.00
6,200.0	2.44	358.57	6,031.8	-1,447.05	-440.7	1,150.1	-163.2	11.97	11.97	0.00
6,300.0	14.44	358.57	6,130.6	-1,545.78	-426.1	1,149.7	-149.1	12.00	12.00	0.00
SHARON SPRINGS										
6,303.3	14.84	358.57	6,133.8	-1,549.00	-425.2	1,149.7	-148.3	12.00	12.00	0.00
SHARON SPRINGS "A"										
6,362.4	21.93	358.57	6,189.8	-1,605.00	-406.6	1,149.3	-130.3	12.00	12.00	0.00
SHARON SPRINGS "B"										
6,396.3	26.00	358.57	6,220.8	-1,636.00	-392.8	1,148.9	-116.9	12.00	12.00	0.00
6,400.0	26.44	358.57	6,224.1	-1,639.32	-391.2	1,148.9	-115.4	12.00	12.00	0.00
NIOBRARA "A" CHALK										
6,433.8	30.50	358.57	6,253.8	-1,669.00	-375.1	1,148.5	-99.8	12.00	12.00	0.00
NIOBRARA "A" MARL										
6,447.8	32.18	358.57	6,265.8	-1,681.00	-367.8	1,148.3	-92.7	12.00	12.00	0.00
6,500.0	38.44	358.57	6,308.4	-1,723.55	-337.7	1,147.5	-63.6	12.00	12.00	0.00
NIOBRARA "B" CHALK										
6,522.7	41.17	358.57	6,325.8	-1,741.00	-323.2	1,147.2	-49.5	12.00	12.00	0.00
NIOBRARA "B" MARL										
6,564.2	46.15	358.57	6,355.8	-1,771.00	-294.5	1,146.5	-21.8	12.00	12.00	0.00
6,600.0	50.44	358.57	6,379.6	-1,794.82	-267.8	1,145.8	4.0	12.00	12.00	0.00
NIOBRARA "C" CHALK										
6,631.4	54.21	358.57	6,398.8	-1,814.00	-243.0	1,145.2	28.0	12.00	12.00	0.00
NIOBRARA "C" MARL										
6,675.3	59.48	358.57	6,422.8	-1,838.00	-206.3	1,144.3	63.5	12.00	12.00	0.00
6,700.0	62.44	358.57	6,434.8	-1,850.00	-184.7	1,143.7	84.4	12.00	12.00	0.00
6,800.0	74.44	358.57	6,471.5	-1,886.67	-91.9	1,141.4	174.2	12.00	12.00	0.00
START OF TANGENT										
6,804.6	74.99	358.57	6,472.7	-1,887.88	-87.4	1,141.3	178.5	12.00	12.00	0.00
FT HAYS										
6,859.1	75.00	358.57	6,486.8	-1,902.00	-34.8	1,140.0	229.4	0.01	0.01	0.00
6,900.0	75.00	358.57	6,497.4	-1,912.58	4.7	1,139.0	267.6	0.00	0.00	0.00
END OF TANGENT										
6,904.6	75.00	358.57	6,498.6	-1,913.77	9.1	1,138.9	271.9	0.00	0.00	0.00

Planning Report



Database:	EDM 5000.1 Single User Db	Local Co-ordinate Reference:	Well NORTH PLATTE O-K-24HC - OPT 4
Company:	BONANZA CREEK ENERGY INC.	TVD Reference:	KB-EST @ 4584.8usft
Project:	WELD COUNTY, COLORADO (NAD 83)	MD Reference:	KB-EST @ 4584.8usft
Site:	SE SW SEC. 24 T5N R63W 6th P.M.	North Reference:	True
Well:	NORTH PLATTE O-K-24HC - OPT 4	Survey Calculation Method:	Minimum Curvature
Wellbore:	ORIGINAL WELLBORE		
Design:	PROPOSAL #4		

Planned Survey

MD (usft)	Inc (°)	Azi (°)	TVD (usft)	SS (usft)	+N/-S (usft)	+E/-W (usft)	Vertical Section (usft)	Dogleg Rate (°/100usft)	Build Rate (°/100usft)	Turn Rate (°/100usft)
CODELL										
6,967.4	82.54	358.57	6,510.8	-1,926.00	70.7	1,137.3	331.4	11.99	11.99	0.00
7,000.0	86.44	358.57	6,513.9	-1,929.13	103.1	1,136.5	362.8	12.00	12.00	0.00
CODELL TARGET										
7,023.0	89.20	358.57	6,514.8	-1,930.00	126.0	1,136.0	384.9	12.00	12.00	0.00
7" ICP: 589.1ft FSL & 2478ft FWL Sec 24										
7,029.6	89.99	358.57	6,514.8	-1,930.05	132.7	1,135.8	391.4	12.00	12.00	0.00
7,100.0	90.00	358.57	6,514.8	-1,930.05	203.1	1,134.0	459.4	0.01	0.01	0.00
7,200.0	90.00	358.57	6,514.8	-1,930.05	303.0	1,131.5	556.1	0.00	0.00	0.00
7,300.0	90.00	358.57	6,514.8	-1,930.05	403.0	1,129.0	652.8	0.00	0.00	0.00
7,400.0	90.00	358.57	6,514.8	-1,930.05	503.0	1,126.6	749.5	0.00	0.00	0.00
7,500.0	90.00	358.57	6,514.8	-1,930.05	602.9	1,124.1	846.2	0.00	0.00	0.00
7,600.0	90.00	358.57	6,514.8	-1,930.05	702.9	1,121.6	942.9	0.00	0.00	0.00
7,700.0	90.00	358.57	6,514.8	-1,930.05	802.9	1,119.1	1,039.6	0.00	0.00	0.00
7,800.0	90.00	358.57	6,514.8	-1,930.05	902.8	1,116.6	1,136.3	0.00	0.00	0.00
7,900.0	90.00	358.57	6,514.8	-1,930.04	1,002.8	1,114.1	1,233.0	0.00	0.00	0.00
8,000.0	90.00	358.57	6,514.8	-1,930.04	1,102.8	1,111.6	1,329.7	0.00	0.00	0.00
8,100.0	90.00	358.57	6,514.8	-1,930.04	1,202.7	1,109.1	1,426.3	0.00	0.00	0.00
8,200.0	90.00	358.57	6,514.8	-1,930.04	1,302.7	1,106.6	1,523.0	0.00	0.00	0.00
8,300.0	90.00	358.57	6,514.8	-1,930.04	1,402.7	1,104.1	1,619.7	0.00	0.00	0.00
8,400.0	90.00	358.57	6,514.8	-1,930.04	1,502.7	1,101.6	1,716.4	0.00	0.00	0.00
8,500.0	90.00	358.57	6,514.8	-1,930.04	1,602.6	1,099.1	1,813.1	0.00	0.00	0.00
8,600.0	90.00	358.57	6,514.8	-1,930.04	1,702.6	1,096.6	1,909.8	0.00	0.00	0.00
8,700.0	90.00	358.57	6,514.8	-1,930.04	1,802.6	1,094.2	2,006.5	0.00	0.00	0.00
8,800.0	90.00	358.57	6,514.8	-1,930.04	1,902.5	1,091.7	2,103.2	0.00	0.00	0.00
8,900.0	90.00	358.57	6,514.8	-1,930.04	2,002.5	1,089.2	2,199.9	0.00	0.00	0.00
9,000.0	90.00	358.57	6,514.8	-1,930.04	2,102.5	1,086.7	2,296.6	0.00	0.00	0.00
9,100.0	90.00	358.57	6,514.8	-1,930.04	2,202.4	1,084.2	2,393.3	0.00	0.00	0.00
9,200.0	90.00	358.57	6,514.8	-1,930.03	2,302.4	1,081.7	2,490.0	0.00	0.00	0.00
9,300.0	90.00	358.57	6,514.8	-1,930.03	2,402.4	1,079.2	2,586.7	0.00	0.00	0.00
9,400.0	90.00	358.57	6,514.8	-1,930.03	2,502.3	1,076.7	2,683.3	0.00	0.00	0.00
9,500.0	90.00	358.57	6,514.8	-1,930.03	2,602.3	1,074.2	2,780.0	0.00	0.00	0.00
9,600.0	90.00	358.57	6,514.8	-1,930.03	2,702.3	1,071.8	2,876.7	0.00	0.00	0.00
9,700.0	90.00	358.57	6,514.8	-1,930.03	2,802.3	1,069.3	2,973.4	0.00	0.00	0.00
9,800.0	90.00	358.58	6,514.8	-1,930.03	2,902.2	1,066.8	3,070.1	0.00	0.00	0.00
9,900.0	90.00	358.58	6,514.8	-1,930.03	3,002.2	1,064.3	3,166.8	0.00	0.00	0.00
10,000.0	90.00	358.58	6,514.8	-1,930.02	3,102.2	1,061.8	3,263.5	0.00	0.00	0.00
10,100.0	90.00	358.58	6,514.8	-1,930.02	3,202.1	1,059.3	3,360.2	0.00	0.00	0.00
10,200.0	90.00	358.58	6,514.8	-1,930.02	3,302.1	1,056.8	3,456.9	0.00	0.00	0.00
10,300.0	90.00	358.58	6,514.8	-1,930.02	3,402.1	1,054.4	3,553.6	0.00	0.00	0.00
10,400.0	90.00	358.58	6,514.8	-1,930.02	3,502.0	1,051.9	3,650.3	0.00	0.00	0.00
10,500.0	90.00	358.58	6,514.8	-1,930.02	3,602.0	1,049.4	3,747.0	0.00	0.00	0.00
10,600.0	90.00	358.58	6,514.8	-1,930.01	3,702.0	1,046.9	3,843.7	0.00	0.00	0.00
10,700.0	90.00	358.58	6,514.8	-1,930.01	3,801.9	1,044.4	3,940.4	0.00	0.00	0.00
10,800.0	90.00	358.58	6,514.8	-1,930.01	3,901.9	1,041.9	4,037.1	0.00	0.00	0.00
10,900.0	90.00	358.58	6,514.8	-1,930.01	4,001.9	1,039.4	4,133.8	0.00	0.00	0.00
11,000.0	90.00	358.58	6,514.8	-1,930.01	4,101.9	1,037.0	4,230.4	0.00	0.00	0.00
11,100.0	90.00	358.58	6,514.8	-1,930.00	4,201.8	1,034.5	4,327.1	0.00	0.00	0.00
11,200.0	90.00	358.58	6,514.8	-1,930.00	4,301.8	1,032.0	4,423.8	0.00	0.00	0.00
BHL: 470ft FNL & 2542ft FWL Sec 24										
11,242.3	90.00	358.58	6,514.8	-1,930.00	4,344.1	1,031.0	4,464.7	0.00	0.00	0.00



Database:	EDM 5000.1 Single User Db	Local Co-ordinate Reference:	Well NORTH PLATTE O-K-24HC - OPT 4
Company:	BONANZA CREEK ENERGY INC.	TVD Reference:	KB-EST @ 4584.8usft
Project:	WELD COUNTY, COLORADO (NAD 83)	MD Reference:	KB-EST @ 4584.8usft
Site:	SE SW SEC. 24 T5N R63W 6th P.M.	North Reference:	True
Well:	NORTH PLATTE O-K-24HC - OPT 4	Survey Calculation Method:	Minimum Curvature
Wellbore:	ORIGINAL WELLBORE		
Design:	PROPOSAL #4		

Formations						
MD (usft)	TVD (usft)	Name	Lithology	Dip (°)	Dip Direction (°)	
3,452.0	3,376.8	PARKMAN		0.00		
6,303.3	6,133.8	SHARON SPRINGS		0.00		
6,362.4	6,189.8	SHARON SPRINGS "A"		0.00		
6,396.3	6,220.8	SHARON SPRINGS "B"		0.00		
6,433.8	6,253.8	NIOBRARA "A" CHALK		0.00		
6,447.8	6,265.8	NIOBRARA "A" MARL		0.00		
6,522.7	6,325.8	NIOBRARA "B" CHALK		0.00		
6,564.2	6,355.8	NIOBRARA "B" MARL		0.00		
6,631.4	6,398.8	NIOBRARA "C" CHALK		0.00		
6,675.3	6,422.8	NIOBRARA "C" MARL		0.00		
6,859.1	6,486.8	FT HAYS		0.00		
6,967.4	6,510.8	CODELL		0.00		
7,023.0	6,514.8	CODELL TARGET		0.00		

Plan Annotations				
MD (usft)	TVD (usft)	Local Coordinates		Comment
		+N/-S (usft)	+E/-W (usft)	
0.0	0.0	0.0	0.0	W/C: 461ft FSL & 1339ft FWL Sec 24
1,200.0	1,200.0	0.0	0.0	START NUDGE (3°/100ft BUR)
1,740.3	1,733.1	-27.2	70.9	EOB TO 16.21° INC
5,609.4	5,448.4	-414.0	1,079.3	END OF TANGENT
6,149.6	5,981.5	-441.2	1,150.1	EOD TO VERTICAL
6,179.6	6,011.5	-441.2	1,150.1	KOP (12°/100ft BUR)
6,804.6	6,472.7	-87.4	1,141.3	START OF TANGENT
6,904.6	6,498.6	9.1	1,138.9	END OF TANGENT
7,029.6	6,514.8	132.7	1,135.8	7" ICP: 589.1ft FSL & 2478ft FWL Sec 24
11,242.3	6,514.8	4,344.1	1,031.0	BHL: 470ft FNL & 2542ft FWL Sec 24