

Synergy Resources

Well Name: **SRC Phelps 12-32CHZ**

Surface Location: SRC Phelps 11-32CHZ Pad Sec.32-T1N-R66W

North American Datum 1983 , US State Plane 1983 , Colorado Northern Zone

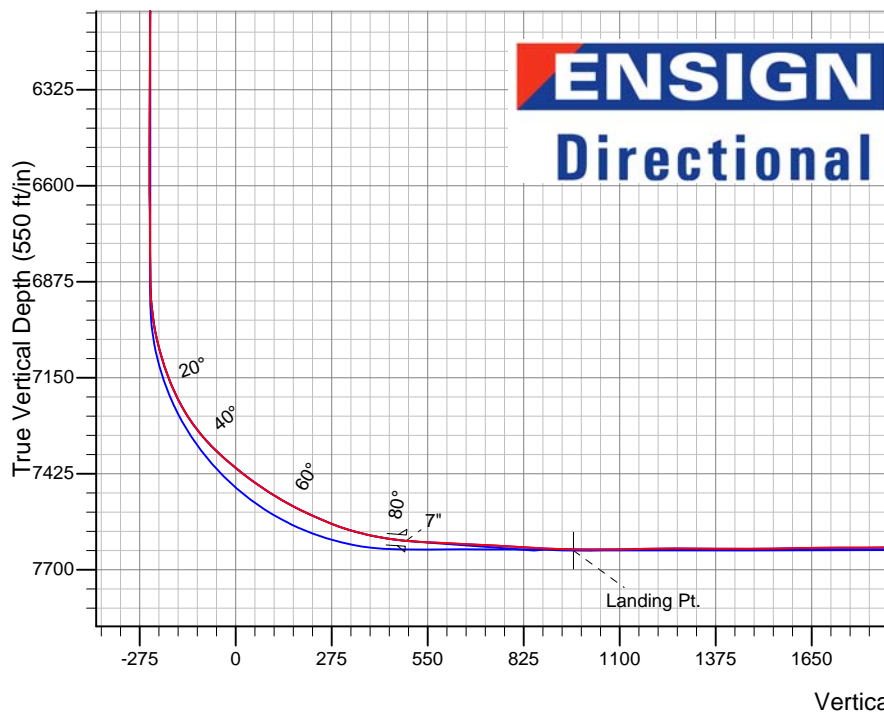
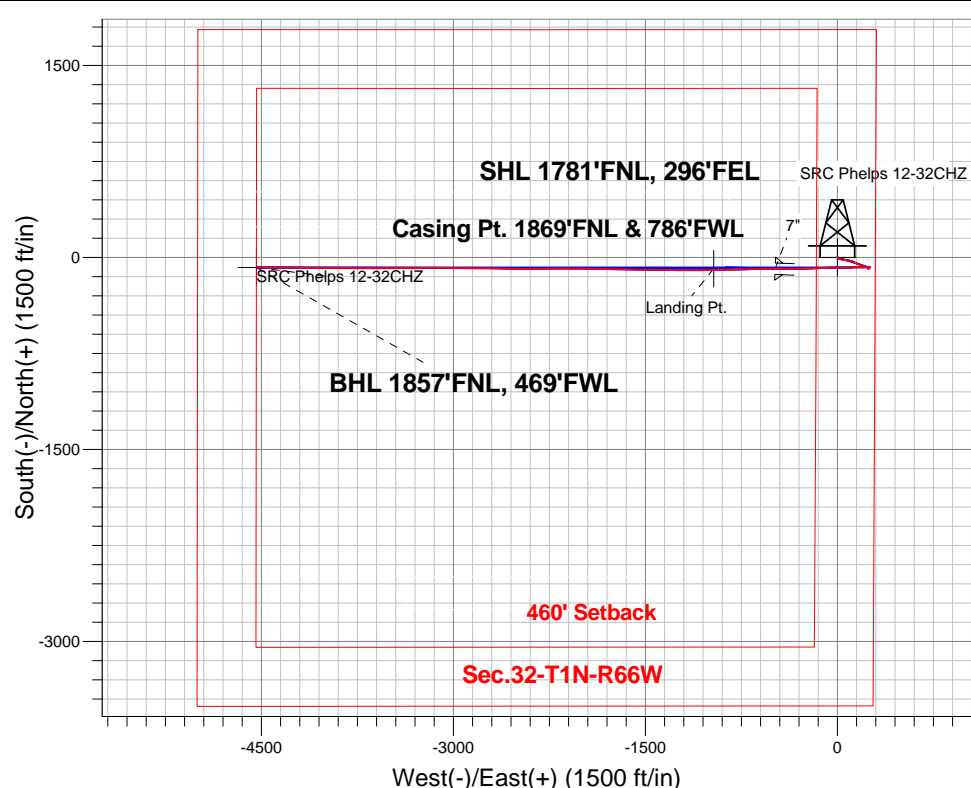
Ground Elevation: 5018.0

+N/-S	+E/-W	Northing	Easting	Latitude	Longitude	Slot
0.0	0.0	1247300.85	3198168.37	40.010057	-104.792532	

Ensign Rig #12 - RKB - 12' WELL @ 5030.0ft (Ensign Rig #12 - RKB - 12')

FINAL SURVEY

Projected Bottom Hole Location
12078'MD 7638'TVD 77'S & 4531'W of SHL
90.1 degree Incl @ 270.7 degree AZM



SRC Phelps 11-32CHZ Pad Sec.32-T1N-R66W
SRC Phelps 12-32CHZ
Wellbore #1
13:10, March 28 2014

ANNOTATIONS

No annotation data is available.

LEGEND

- + SRC Phelps 12-32CHZ, Wellbore #1, Plan #2 (2-21-14)R V0
- + SRC Phelps 12-32CHZ, Wellbore #1, Plan #3 (3-10-14) V0
- + Wellbore #1
- Survey #1

BHL 1857'FNL, 469'FWL



Synergy Resources

SEC.32-T1N-R66W

SRC Phelps 11-32CHZ Pad Sec.32-T1N-R66W

SRC Phelps 12-32CHZ

Wellbore #1

Survey: Survey #1

Standard Survey Report

28 March, 2014

Company:	Synergy Resources	Local Co-ordinate Reference:	Well SRC Phelps 12-32CHZ
Project:	SEC.32-T1N-R66W	TVD Reference:	WELL @ 5030.0ft (Ensign Rig #12 - RKB - 12')
Site:	SRC Phelps 11-32CHZ Pad Sec.32-T1N-R66W	MD Reference:	WELL @ 5030.0ft (Ensign Rig #12 - RKB - 12')
Well:	SRC Phelps 12-32CHZ	North Reference:	True
Wellbore:	Wellbore #1	Survey Calculation Method:	Minimum Curvature
Design:	Wellbore #1	Database:	Landmark

Project	SEC.32-T1N-R66W, Weld County, Colorado		
Map System:	US State Plane 1983	System Datum:	Mean Sea Level
Geo Datum:	North American Datum 1983		Using Well Reference Point
Map Zone:	Colorado Northern Zone		Using geodetic scale factor

Site	SRC Phelps 11-32CHZ Pad Sec.32-T1N-R66W				
Site Position:		Northing:	1,247,322.38ft	Latitude:	40.010114
From:	Lat/Long	Easting:	3,198,263.72ft	Longitude:	-104.792191
Position Uncertainty:	0.0 ft	Slot Radius:	"	Grid Convergence:	0.46 °

Well	SRC Phelps 12-32CHZ					
Well Position	+N/-S	0.0 ft	Northing:	1,247,300.85 ft	Latitude:	40.010057
	+E/-W	0.0 ft	Easting:	3,198,168.37 ft	Longitude:	-104.792532
Position Uncertainty		0.0 ft	Wellhead Elevation:	ft	Ground Level:	5,018.0 ft

Wellbore	Wellbore #1				
Magnetics	Model Name	Sample Date	Declination (°)	Dip Angle (°)	Field Strength (nT)
	IGRF2010	3/10/2014	8.48	66.64	52,634

Design	Wellbore #1				
Audit Notes:					
Version:	1.0	Phase:	ACTUAL	Tie On Depth:	0.0
Vertical Section:	Depth From (TVD) (ft)	+N/-S (ft)	+E/-W (ft)	Direction (°)	
	0.0	0.0	0.0	269.02	

Survey Program	Date	3/28/2014			
From (ft)	To (ft)	Survey (Wellbore)	Tool Name	Description	
374.0	12,078.0	Survey #1 (Wellbore #1)	MWD	MWD - Standard	

Survey										
Measured Depth (ft)	Inclination (°)	Azimuth (°)	Vertical Depth (ft)	+N/-S (ft)	+E/-W (ft)	Vertical Section (ft)	Dogleg Rate (°/100ft)	Build Rate (°/100ft)	Turn Rate (°/100ft)	
0.0	0.00	0.00	0.0	0.0	0.0	0.0	0.00	0.00	0.00	
1.0	0.00	81.50	1.0	0.0	0.0	0.0	0.00	0.00	0.00	
SHL 1781'FNL, 296'FEL										
374.0	0.50	81.50	374.0	0.2	1.6	-1.6	0.13	0.13	0.00	
468.0	0.30	106.80	468.0	0.2	2.3	-2.3	0.28	-0.21	26.91	
593.0	2.50	162.50	593.0	-2.5	3.4	-3.3	1.88	1.76	44.56	
718.0	3.30	124.50	717.8	-7.1	7.2	-7.1	1.63	0.64	-30.40	
842.0	4.70	106.40	841.5	-10.6	15.0	-14.8	1.51	1.13	-14.60	
967.0	4.70	109.40	966.1	-13.7	24.7	-24.5	0.20	0.00	2.40	
1,095.0	5.00	98.50	1,093.6	-16.3	35.2	-34.9	0.76	0.23	-8.52	
1,155.0	5.10	99.80	1,153.4	-17.1	40.4	-40.1	0.25	0.17	2.17	
1,214.0	4.70	96.90	1,212.2	-17.8	45.4	-45.1	0.80	-0.68	-4.92	
1,337.0	4.40	89.70	1,334.8	-18.4	55.1	-54.8	0.52	-0.24	-5.85	

Company:	Synergy Resources	Local Co-ordinate Reference:	Well SRC Phelps 12-32CHZ
Project:	SEC.32-T1N-R66W	TVD Reference:	WELL @ 5030.0ft (Ensign Rig #12 - RKB - 12')
Site:	SRC Phelps 11-32CHZ Pad Sec.32-T1N-R66W	MD Reference:	WELL @ 5030.0ft (Ensign Rig #12 - RKB - 12')
Well:	SRC Phelps 12-32CHZ	North Reference:	True
Wellbore:	Wellbore #1	Survey Calculation Method:	Minimum Curvature
Design:	Wellbore #1	Database:	Landmark

Survey										
Measured Depth (ft)	Inclination (°)	Azimuth (°)	Vertical Depth (ft)	+N/-S (ft)	+E/-W (ft)	Vertical Section (ft)	Dogleg Rate (°/100ft)	Build Rate (°/100ft)	Turn Rate (°/100ft)	
1,460.0	4.70	105.40	1,457.4	-19.7	64.7	-64.3	1.04	0.24	12.76	
1,584.0	4.40	102.70	1,581.0	-22.1	74.2	-73.8	0.30	-0.24	-2.18	
1,707.0	4.70	100.30	1,703.6	-24.1	83.8	-83.4	0.29	0.24	-1.95	
1,831.0	4.80	96.60	1,827.2	-25.6	93.9	-93.5	0.26	0.08	-2.98	
1,954.0	4.70	108.50	1,949.8	-27.8	103.8	-103.3	0.80	-0.08	9.67	
2,078.0	4.70	104.00	2,073.4	-30.6	113.6	-113.0	0.30	0.00	-3.63	
2,201.0	3.80	118.20	2,196.0	-33.8	122.1	-121.5	1.12	-0.73	11.54	
2,325.0	3.10	117.70	2,319.8	-37.3	128.7	-128.0	0.57	-0.56	-0.40	
2,448.0	4.00	114.50	2,442.6	-40.6	135.5	-134.8	0.75	0.73	-2.60	
2,572.0	3.10	106.40	2,566.3	-43.3	142.7	-141.9	0.83	-0.73	-6.53	
2,696.0	3.90	112.40	2,690.1	-45.9	149.8	-149.0	0.71	0.65	4.84	
2,819.0	3.90	114.00	2,812.8	-49.2	157.5	-156.6	0.09	0.00	1.30	
2,943.0	5.10	110.30	2,936.4	-52.8	166.5	-165.5	1.00	0.97	-2.98	
3,070.0	5.50	120.20	3,062.9	-57.8	177.0	-176.0	0.78	0.31	7.80	
3,197.0	4.00	116.80	3,189.4	-62.9	186.2	-185.1	1.20	-1.18	-2.68	
3,324.0	4.70	110.00	3,316.1	-66.7	195.1	-193.9	0.68	0.55	-5.35	
3,451.0	4.90	111.90	3,442.6	-70.5	205.0	-203.8	0.20	0.16	1.50	
3,578.0	4.90	91.50	3,569.2	-72.6	215.5	-214.2	1.36	0.00	-16.06	
3,705.0	4.40	101.30	3,695.8	-73.7	225.7	-224.4	0.74	-0.39	7.72	
3,832.0	3.40	100.10	3,822.5	-75.3	234.2	-232.8	0.79	-0.79	-0.94	
3,959.0	2.90	92.00	3,949.3	-76.1	241.1	-239.7	0.53	-0.39	-6.38	
4,086.0	1.90	86.80	4,076.2	-76.1	246.4	-245.0	0.81	-0.79	-4.09	
4,213.0	1.40	101.20	4,203.1	-76.3	250.0	-248.7	0.51	-0.39	11.34	
4,340.0	1.30	183.10	4,330.1	-78.0	251.5	-250.1	1.39	-0.08	64.49	
4,467.0	1.10	308.60	4,457.1	-78.7	250.4	-249.0	1.68	-0.16	98.82	
4,594.0	1.10	333.20	4,584.1	-76.9	248.9	-247.6	0.37	0.00	19.37	
4,721.0	0.80	274.80	4,711.0	-75.7	247.5	-246.2	0.76	-0.24	-45.98	
4,848.0	0.80	268.70	4,838.0	-75.6	245.7	-244.4	0.07	0.00	-4.80	
4,975.0	0.70	254.40	4,965.0	-75.9	244.1	-242.7	0.17	-0.08	-11.26	
5,102.0	0.90	232.70	5,092.0	-76.7	242.5	-241.2	0.28	0.16	-17.09	
5,229.0	1.30	216.80	5,219.0	-78.4	240.9	-239.5	0.39	0.31	-12.52	
5,356.0	1.80	199.40	5,345.9	-81.5	239.4	-237.9	0.54	0.39	-13.70	
5,483.0	1.80	177.60	5,472.9	-85.3	238.8	-237.3	0.54	0.00	-17.17	
5,610.0	1.10	112.90	5,599.8	-87.8	240.0	-238.4	1.31	-0.55	-50.94	
5,737.0	1.30	58.50	5,726.8	-87.5	242.3	-240.8	0.88	0.16	-42.83	
5,864.0	1.10	35.80	5,853.8	-85.8	244.3	-242.8	0.40	-0.16	-17.87	
5,991.0	0.80	53.70	5,980.8	-84.3	245.7	-244.2	0.33	-0.24	14.09	
6,118.0	1.00	8.40	6,107.8	-82.7	246.6	-245.1	0.56	0.16	-35.67	
6,245.0	0.90	34.90	6,234.7	-80.7	247.3	-245.9	0.35	-0.08	20.87	
6,372.0	0.90	1.50	6,361.7	-78.9	247.9	-246.5	0.41	0.00	-26.30	
6,499.0	0.60	21.90	6,488.7	-77.3	248.2	-246.8	0.31	-0.24	16.06	
6,626.0	0.50	248.60	6,615.7	-76.9	247.9	-246.6	0.80	-0.08	-104.96	
6,753.0	0.50	239.20	6,742.7	-77.4	246.9	-245.6	0.06	0.00	-7.40	
6,816.0	0.60	243.50	6,805.7	-77.7	246.4	-245.0	0.17	0.16	6.83	
6,848.0	0.40	183.70	6,837.7	-77.9	246.2	-244.9	1.65	-0.63	-186.88	
6,880.0	0.40	234.20	6,869.7	-78.0	246.1	-244.8	1.07	0.00	157.81	
6,911.0	2.60	281.60	6,900.7	-78.0	245.4	-244.0	7.57	7.10	152.90	
6,943.0	5.00	287.80	6,932.6	-77.4	243.3	-242.0	7.60	7.50	19.38	
6,975.0	6.80	284.80	6,964.4	-76.5	240.2	-238.8	5.71	5.63	-9.38	
7,007.0	9.20	279.70	6,996.1	-75.6	235.8	-234.5	7.81	7.50	-15.94	
7,038.0	12.10	276.00	7,026.6	-74.8	230.1	-228.8	9.61	9.35	-11.94	
7,070.0	14.30	275.10	7,057.7	-74.1	222.9	-221.6	6.90	6.88	-2.81	
7,102.0	16.10	269.50	7,088.6	-73.8	214.5	-213.2	7.25	5.63	-17.50	
7,134.0	18.50	267.60	7,119.2	-74.0	205.0	-203.7	7.70	7.50	-5.94	

Company:	Synergy Resources	Local Co-ordinate Reference:	Well SRC Phelps 12-32CHZ
Project:	SEC.32-T1N-R66W	TVD Reference:	WELL @ 5030.0ft (Ensign Rig #12 - RKB - 12')
Site:	SRC Phelps 11-32CHZ Pad Sec.32-T1N-R66W	MD Reference:	WELL @ 5030.0ft (Ensign Rig #12 - RKB - 12')
Well:	SRC Phelps 12-32CHZ	North Reference:	True
Wellbore:	Wellbore #1	Survey Calculation Method:	Minimum Curvature
Design:	Wellbore #1	Database:	Landmark

Survey

Measured Depth (ft)	Inclination (°)	Azimuth (°)	Vertical Depth (ft)	+N/-S (ft)	+E/-W (ft)	Vertical Section (ft)	Dogleg Rate (°/100ft)	Build Rate (°/100ft)	Turn Rate (°/100ft)
7,166.0	20.80	267.60	7,149.3	-74.5	194.2	-192.9	7.19	7.19	0.00
7,197.0	23.50	267.60	7,178.0	-75.0	182.6	-181.2	8.71	8.71	0.00
7,229.0	26.10	269.70	7,207.1	-75.3	169.1	-167.8	8.58	8.13	6.56
7,261.0	29.50	269.70	7,235.4	-75.4	154.2	-152.9	10.63	10.63	0.00
7,293.0	32.90	268.10	7,262.7	-75.7	137.6	-136.3	10.94	10.63	-5.00
7,324.0	36.30	266.40	7,288.3	-76.6	120.1	-118.7	11.40	10.97	-5.48
7,356.0	40.00	267.10	7,313.4	-77.7	100.3	-99.0	11.64	11.56	2.19
7,388.0	42.90	269.30	7,337.4	-78.3	79.2	-77.8	10.14	9.06	6.88
7,420.0	46.30	270.90	7,360.2	-78.3	56.7	-55.4	11.19	10.63	5.00
7,451.0	49.10	270.00	7,381.0	-78.1	33.8	-32.4	9.28	9.03	-2.90
7,483.0	50.80	269.30	7,401.6	-78.2	9.3	-7.9	5.57	5.31	-2.19
7,515.0	51.00	268.50	7,421.8	-78.7	-15.5	16.9	2.04	0.63	-2.50
7,547.0	52.90	267.90	7,441.5	-79.5	-40.7	42.1	6.12	5.94	-1.88
7,579.0	55.90	268.10	7,460.2	-80.4	-66.7	68.1	9.39	9.38	0.63
7,610.0	58.10	268.50	7,477.0	-81.2	-92.7	94.1	7.18	7.10	1.29
7,642.0	58.40	268.10	7,493.9	-82.0	-119.9	121.3	1.42	0.94	-1.25
7,674.0	60.50	267.60	7,510.1	-83.0	-147.5	148.9	6.70	6.56	-1.56
7,706.0	63.40	267.40	7,525.2	-84.3	-175.7	177.1	9.08	9.06	-0.63
7,737.0	65.60	268.80	7,538.5	-85.2	-203.6	205.1	8.18	7.10	4.52
7,769.0	66.20	268.80	7,551.6	-85.8	-232.8	234.3	1.88	1.88	0.00
7,801.0	67.70	268.60	7,564.1	-86.5	-262.3	263.7	4.72	4.69	-0.63
7,833.0	69.90	269.00	7,575.7	-87.1	-292.1	293.5	6.97	6.88	1.25
7,864.0	72.60	269.70	7,585.7	-87.4	-321.4	322.9	8.97	8.71	2.26
7,896.0	75.40	270.20	7,594.5	-87.5	-352.2	353.6	8.88	8.75	1.56
7,928.0	78.30	269.50	7,601.8	-87.5	-383.4	384.8	9.31	9.06	-2.19
7,960.0	80.00	269.20	7,607.8	-87.9	-414.8	416.2	5.39	5.31	-0.94
7,991.0	81.60	269.00	7,612.7	-88.4	-445.4	446.8	5.20	5.16	-0.65
8,032.0	85.15	271.92	7,617.5	-88.0	-486.1	487.5	11.18	8.66	7.12
7"									
8,036.0	85.50	272.20	7,617.8	-87.9	-490.1	491.5	11.18	8.69	7.07
8,067.0	86.70	270.00	7,619.9	-87.3	-521.0	522.4	8.07	3.87	-7.10
8,131.0	87.20	269.00	7,623.3	-87.9	-584.9	586.3	1.74	0.78	-1.56
8,194.0	86.70	268.50	7,626.7	-89.2	-647.8	649.2	1.12	-0.79	-0.79
8,258.0	87.20	268.10	7,630.1	-91.1	-711.7	713.1	1.00	0.78	-0.63
8,321.0	87.10	267.20	7,633.2	-93.7	-774.5	776.0	1.44	-0.16	-1.43
8,385.0	86.60	267.80	7,636.7	-96.5	-838.4	839.9	1.22	-0.78	0.94
8,448.0	87.20	269.20	7,640.1	-98.1	-901.3	902.8	2.41	0.95	2.22
8,512.0	88.80	269.70	7,642.4	-98.8	-965.2	966.8	2.62	2.50	0.78
8,513.2	88.83	269.70	7,642.4	-98.8	-966.4	967.9	2.24	2.22	0.32
Landing Pt.									
8,575.0	90.20	269.90	7,642.9	-99.0	-1,028.2	1,029.8	2.24	2.22	0.32
8,638.0	90.70	269.70	7,642.4	-99.2	-1,091.2	1,092.8	0.85	0.79	-0.32
8,702.0	91.70	270.20	7,641.1	-99.3	-1,155.2	1,156.7	1.75	1.56	0.78
8,765.0	91.00	270.70	7,639.6	-98.8	-1,218.2	1,219.7	1.37	-1.11	0.79
8,829.0	89.30	270.60	7,639.4	-98.0	-1,282.2	1,283.7	2.66	-2.66	-0.16
8,892.0	89.70	270.20	7,640.0	-97.6	-1,345.2	1,346.7	0.90	0.63	-0.63
8,956.0	89.60	270.20	7,640.4	-97.4	-1,409.2	1,410.6	0.16	-0.16	0.00
9,019.0	90.60	270.40	7,640.3	-97.0	-1,472.2	1,473.6	1.62	1.59	0.32
9,083.0	90.70	271.10	7,639.5	-96.2	-1,536.2	1,537.6	1.10	0.16	1.09
9,147.0	91.00	270.60	7,638.6	-95.3	-1,600.1	1,601.5	0.91	0.47	-0.78
9,210.0	90.70	271.60	7,637.6	-94.0	-1,663.1	1,664.5	1.66	-0.48	1.59
9,274.0	90.40	271.80	7,637.0	-92.1	-1,727.1	1,728.4	0.56	-0.47	0.31
9,337.0	90.10	271.10	7,636.8	-90.6	-1,790.1	1,791.4	1.21	-0.48	-1.11
9,401.0	90.90	271.30	7,636.2	-89.2	-1,854.1	1,855.3	1.29	1.25	0.31

Company:	Synergy Resources	Local Co-ordinate Reference:	Well SRC Phelps 12-32CHZ
Project:	SEC.32-T1N-R66W	TVD Reference:	WELL @ 5030.0ft (Ensign Rig #12 - RKB - 12')
Site:	SRC Phelps 11-32CHZ Pad Sec.32-T1N-R66W	MD Reference:	WELL @ 5030.0ft (Ensign Rig #12 - RKB - 12')
Well:	SRC Phelps 12-32CHZ	North Reference:	True
Wellbore:	Wellbore #1	Survey Calculation Method:	Minimum Curvature
Design:	Wellbore #1	Database:	Landmark

Survey										
Measured Depth (ft)	Inclination (°)	Azimuth (°)	Vertical Depth (ft)	+N/-S (ft)	+E/-W (ft)	Vertical Section (ft)	Dogleg Rate (°/100ft)	Build Rate (°/100ft)	Turn Rate (°/100ft)	
9,464.0	91.50	271.10	7,634.9	-87.9	-1,917.0	1,918.3	1.00	0.95	-0.32	
9,528.0	90.50	270.60	7,633.8	-86.9	-1,981.0	1,982.2	1.75	-1.56	-0.78	
9,591.0	90.00	270.40	7,633.5	-86.4	-2,044.0	2,045.2	0.85	-0.79	-0.32	
9,655.0	89.60	270.00	7,633.7	-86.2	-2,108.0	2,109.2	0.88	-0.63	-0.63	
9,718.0	90.00	269.50	7,633.9	-86.4	-2,171.0	2,172.2	1.02	0.63	-0.79	
9,782.0	89.20	269.50	7,634.4	-87.0	-2,235.0	2,236.2	1.25	-1.25	0.00	
9,845.0	88.80	268.80	7,635.5	-87.9	-2,298.0	2,299.2	1.28	-0.63	-1.11	
9,909.0	88.90	269.30	7,636.8	-89.0	-2,362.0	2,363.1	0.80	0.16	0.78	
9,972.0	89.80	269.50	7,637.5	-89.7	-2,425.0	2,426.1	1.46	1.43	0.32	
10,036.0	90.80	269.90	7,637.1	-90.0	-2,489.0	2,490.1	1.68	1.56	0.63	
10,099.0	90.70	270.90	7,636.3	-89.6	-2,551.9	2,553.1	1.60	-0.16	1.59	
10,162.0	89.80	271.80	7,636.0	-88.1	-2,614.9	2,616.1	2.02	-1.43	1.43	
10,226.0	90.00	271.40	7,636.2	-86.3	-2,678.9	2,680.0	0.70	0.31	-0.63	
10,289.0	90.20	271.40	7,636.0	-84.7	-2,741.9	2,742.9	0.32	0.32	0.00	
10,353.0	90.20	270.60	7,635.8	-83.6	-2,805.9	2,806.9	1.25	0.00	-1.25	
10,417.0	90.40	270.60	7,635.5	-83.0	-2,869.9	2,870.9	0.31	0.31	0.00	
10,480.0	89.90	270.90	7,635.3	-82.1	-2,932.9	2,933.8	0.93	-0.79	0.48	
10,543.0	89.40	270.20	7,635.7	-81.5	-2,995.9	2,996.8	1.37	-0.79	-1.11	
10,607.0	89.70	269.90	7,636.2	-81.5	-3,059.9	3,060.8	0.66	0.47	-0.47	
10,670.0	90.00	269.30	7,636.4	-81.9	-3,122.9	3,123.8	1.06	0.48	-0.95	
10,734.0	89.70	270.20	7,636.5	-82.2	-3,186.9	3,187.8	1.48	-0.47	1.41	
10,798.0	89.80	270.20	7,636.8	-82.0	-3,250.9	3,251.8	0.16	0.16	0.00	
10,861.0	90.10	269.20	7,636.9	-82.3	-3,313.8	3,314.8	1.66	0.48	-1.59	
10,924.0	90.90	269.20	7,636.3	-83.2	-3,376.8	3,377.8	1.27	1.27	0.00	
10,988.0	89.50	269.70	7,636.1	-83.8	-3,440.8	3,441.8	2.32	-2.19	0.78	
11,051.0	89.70	270.00	7,636.5	-84.0	-3,503.8	3,504.8	0.57	0.32	0.48	
11,115.0	89.90	270.00	7,636.8	-84.0	-3,567.8	3,568.7	0.31	0.31	0.00	
11,178.0	90.00	269.90	7,636.8	-84.0	-3,630.8	3,631.7	0.22	0.16	-0.16	
11,242.0	90.00	269.30	7,636.8	-84.5	-3,694.8	3,695.7	0.94	0.00	-0.94	
11,305.0	90.00	270.40	7,636.8	-84.6	-3,757.8	3,758.7	1.75	0.00	1.75	
11,369.0	90.10	270.20	7,636.8	-84.3	-3,821.8	3,822.7	0.35	0.16	-0.31	
11,433.0	90.80	270.00	7,636.3	-84.2	-3,885.8	3,886.7	1.14	1.09	-0.31	
11,496.0	90.50	270.40	7,635.5	-84.0	-3,948.8	3,949.7	0.79	-0.48	0.63	
11,560.0	90.50	270.70	7,635.0	-83.3	-4,012.8	4,013.7	0.47	0.00	0.47	
11,623.0	89.70	270.90	7,634.9	-82.5	-4,075.8	4,076.6	1.31	-1.27	0.32	
11,687.0	90.20	271.40	7,634.9	-81.2	-4,139.8	4,140.6	1.10	0.78	0.78	
11,750.0	89.50	271.60	7,635.1	-79.5	-4,202.8	4,203.5	1.16	-1.11	0.32	
11,814.0	88.80	270.70	7,636.0	-78.2	-4,266.8	4,267.5	1.78	-1.09	-1.41	
11,877.0	89.10	270.00	7,637.2	-77.9	-4,329.7	4,330.4	1.21	0.48	-1.11	
11,941.0	89.40	270.00	7,638.0	-77.9	-4,393.7	4,394.4	0.47	0.47	0.00	
12,023.0	90.10	270.70	7,638.4	-77.4	-4,475.7	4,476.4	1.21	0.85	0.85	
12,078.0	90.10	270.70	7,638.3	-76.7	-4,530.7	4,531.4	0.00	0.00	0.00	
BHL 1858'FNL, 460'FWL										

Casing Points				
Measured Depth (ft)	Vertical Depth (ft)	Name	Casing Diameter (")	Hole Diameter (")
8,032.0	7,617.5	7"	7	7-1/2

Checked By: _____ Approved By: _____ Date: _____