

**SYNERGY RESOURCES CORPORATION
20203 HIGHWAY 60
PLATTEVILLE, Colorado**

Phelps 11-32CHZ

Ensign 17

Post Job Summary **Cement Conductor Casing**

Prepared for:
Date Prepared: 2/16/2014
Version: 1

Service Supervisor: VIGIL, NICHOLAS

Submitted by: FINNEY, SEAN

HALLIBURTON

HALLIBURTON

Wellbore Geometry

Job Tubulars					MD	
Type	Description	Size in	ID in	Wt lbm/ft	Top ft	Bottom ft
Open Hole Section	Open Hole		17.000		0.00	245.00
Casing	Surface Casing	13.38	12.715	48.00	0.00	245.00

HALLIBURTON

Pumping Schedule

Stage /Plug #	Fluid #	Fluid Type	Fluid Name	Surface Density lbm/gal	Avg Rate bbl/min	Surface Volume	Downhole Volume
1	1	Spacer	Fresh Water Spacer	8.33	2.50	20.0 bbl	20.0 bbl
1	2	Cement Slurry	SwiftCem B2	13.40	4.00	130.0 sacks	130.0 sacks
1	3	Spacer	Displacement	8.33	4.00	34.0 bbl	34.0 bbl

Fluids Pumped

Stage/Plug # 1 Fluid 1: Fresh Water Spacer
DUMMY MUD / FLUSH / SPACER SBC MATERIAL

Fluid Density: 8.33 lbm/gal
Pump Rate: 2.50 bbl/min

Stage/Plug # 1 Fluid 2: SwiftCem B2
SWIFTCEM (TM) SYSTEM
0.25 lbm Poly-E-Flake

Fluid Weight: 13.40 lbm/gal
Slurry Yield: 1.79 ft³/sack
Total Mixing Fluid: 9.51 Gal
Surface Volume: 130.0 sacks
Sacks: 130.0 sacks
Calculated Fill: 580.00 ft
Calculated Top of Fluid: 0.00 ft

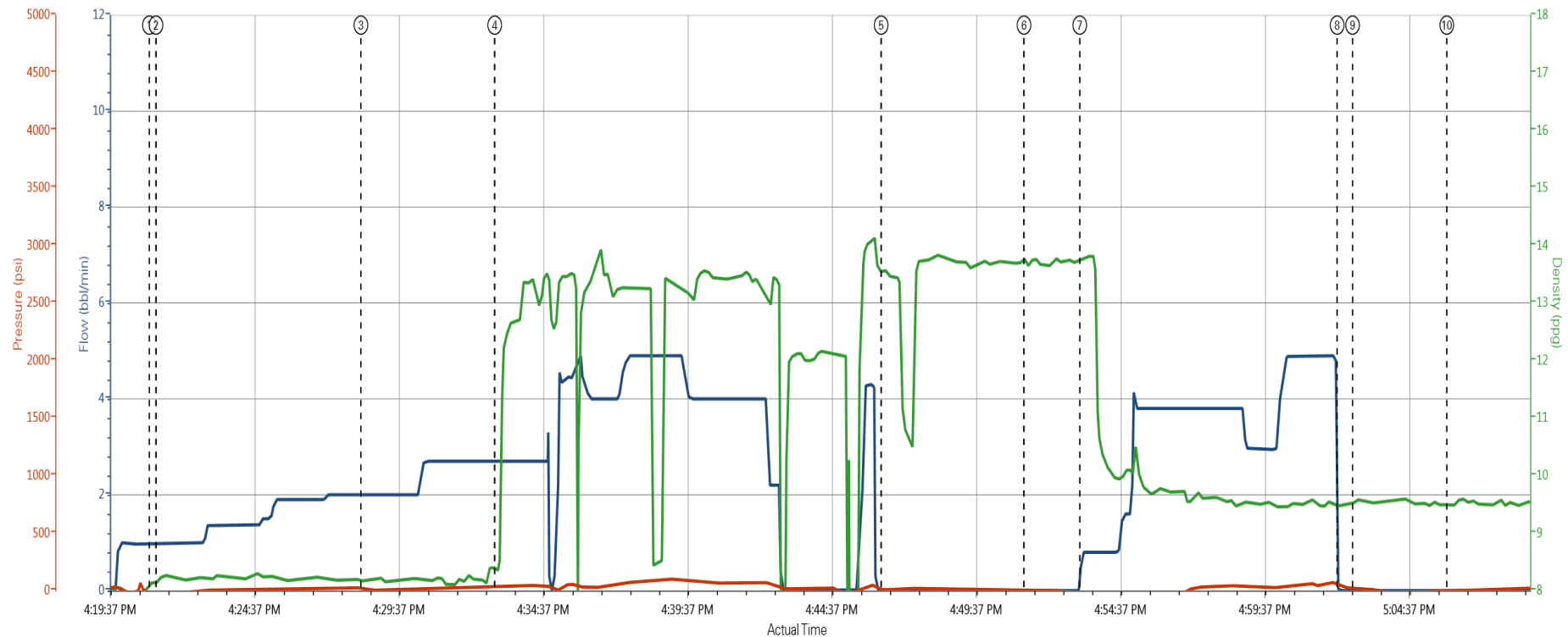
Stage/Plug # 1 Fluid 3: Displacement
DUMMY MUD / FLUSH / SPACER SBC MATERIAL

Fluid Density: 8.33 lbm/gal
Pump Rate: 4.00 bbl/min

HALLIBURTON

Data Acquisition

Synergy Phelps 11-32C HZ



Comb Pump Rate (bbl/min) 2.1 DH Density (ppg) 9.56 PS Pump Press (psi) -47

① Start Job ② Water Spacer ③ Dye Spacer ④ 13.4 ppg SwiftCem ⑤ Shutdown ⑥ Drop Top Plug ⑦ Pump Displacement ⑧ Shutdown ⑨ Shut In Well ⑩ End Job

▼ HALLIBURTON | iCem® Service

Created: 2014-02-05 11:42:30, Version: 3.0.121

Edit

Customer: SYNERGY RESOURCES CORPORATION
Representative: Nicholas Vigil

Job Date: 2/5/2014 12:25:06 PM
Sales Order #: 901088966

Well: Phelps 11-32C HZ
Job Type: 13 3/8 Conductor

HALLIBURTON

Service Supervisor Reports

Job Log

Date/Time	Chart #	Activity Code	Pump Rate	Cum Vol	Pump		Pressure (psig)		Comments
02/05/2014 00:00		Arrive At Loc							On location time was 2300 on 2/4/14 we had some issues with our bulk truck and had to transfer the cement to another truck. Rig was still drilling when we arrived on location.
02/05/2014 00:10		Assessment Of Location Safety Meeting							Hazard hunt, Rig up safety meeting, Water test
02/05/2014 00:20		Comment							We waited to start our rig up until the casing crew was out of the way.
02/05/2014 12:07		Rig-Up Equipment							
02/05/2014 13:00		Rig-Up Completed							
02/05/2014 14:00		Comment							We had to wait for a mechanic to arrive on location to fix our air system on the pump truck
02/05/2014 16:00		Pre-Job Safety Meeting							Held safety meeting with all personnel on location
02/05/2014 16:21		Start Job							
02/05/2014 16:21		Test Lines							It was decided that we would not pressure test as it was 36 degrees below freezing and our highest expected pressure would be no more than 100 psi.
02/05/2014 16:21		Pump Spacer 1	2	10				13.0	Water Spacer
02/05/2014 16:28		Pump Spacer 2	3	10				22.0	Dye Water
02/05/2014 16:33		Pump Cement	4	41.4				55.0	13.4 ppg SwiftCem (130 sks), weight was verified by mud scales
02/05/2014 16:46		Shutdown							
02/05/2014 16:51		Drop Top Plug							Plug was loaded in the casing while were shut down.
02/05/2014 16:53		Pump Displacement	3	34				20.0	Displaced using fresh water
02/05/2014 17:02		Shutdown							Spotted our plug 30' from the float shoe per company man.
02/05/2014 17:02		Shut In Well							Shut in well with 20 psi on the casing.
02/05/2014 17:05		End Job							Rig down safety meeting
02/05/2014 17:15		Rig-Down Equipment							
02/05/2014 18:00		Rig-Down Completed							

The Road to Excellence Starts with Safety

Sold To #: 359915	Ship To #: 3117316	Quote #:	Sales Order #: 901088966
Customer: SYNERGY RESOURCES CORPORATION		Customer Rep: Hagelbarger, Mark	
Well Name: Phelps		Well #: 11-32CHZ	API/UWI #: 05-123-37684
Field: WATTENBERG	City (SAP): LOCHBUIE	County/Parish: Weld	State: Colorado
Lat: N 40.01 deg. OR N 40 deg. 0 min. 36.252 secs.		Long: W 104.792 deg. OR W -105 deg. 12 min. 27.169 secs.	
Contractor: Ensign		Rig/Platform Name/Num: Ensign 17	
Job Purpose: Cement Conductor Casing			
Well Type: Development Well		Job Type: Cement Conductor Casing	
Sales Person: PLIENESS, RYAN		Srvc Supervisor: VIGIL, NICHOLAS	MBU ID Emp #: 443481

Job Personnel

HES Emp Name	Exp Hrs	Emp #	HES Emp Name	Exp Hrs	Emp #	HES Emp Name	Exp Hrs	Emp #
DEY, JERRY A	0.0	505015	ROMERO, JOSEPH M	0.0	512137	VIGIL, NICHOLAS Joseph	0.0	443481

Equipment

HES Unit #	Distance-1 way	HES Unit #	Distance-1 way	HES Unit #	Distance-1 way	HES Unit #	Distance-1 way
10977079C	5 mile	11410470C	5 mile	11764739	5 mile	12010168	5 mile

Job Hours

Date	On Location Hours	Operating Hours	Date	On Location Hours	Operating Hours	Date	On Location Hours	Operating Hours

TOTAL	Total is the sum of each column separately							
-------	--	--	--	--	--	--	--	--

Job

Job Times

Formation Name					Date	Time	Time Zone
Formation Depth (MD)	Top		Bottom		Called Out	04 - Feb - 2014	19:30 MST
Form Type		BHST			On Location	05 - Feb - 2014	00:00 MST
Job depth MD	245. ft	Job Depth TVD	245. ft		Job Started	05 - Feb - 2014	16:21 MST
Water Depth		Wk Ht Above Floor			Job Completed	05 - Feb - 2014	17:05 MST
Perforation Depth (MD)	From		To		Departed Loc	05 - Feb - 2014	18:15 MST

Well Data

Description	New / Used	Max pressure psig	Size in	ID in	Weight lbm/ft	Thread	Grade	Top MD ft	Bottom MD ft	Top TVD ft	Bottom TVD ft
Open Hole				17.				.	245.		
Surface Casing	Unknown		13.375	12.715	48.		J-55	.	245.		

Sales/Rental/3rd Party (HES)

Description	Qty	Qty uom	Depth	Supplier
CMT CASING EQUIPMENT BOM	1	JOB		
MILEAGE FOR CEMENTING CREW,ZI	10	MI		
ZI FUEL SURCHG-CARS/PICKUPS<1 1/2TON	10	MI		
SHOE,FLT,TROPHY SEAL,13-3/8 BTC	1	EA		
PLUG,CMTG,TOP,13 3/8,HWE,11.79 MIN/12.72	1	EA		
Description	Qty	Qty uom	Depth	Supplier
BASKET - CEMENT - 13-3/8 CSG X 17-1/2	1	EA		

Summit

Sunday, February 16, 2014 15:46:00

Version:

COLLAR-STOP-9 5/8"-FRICTION-HINGED					1	EA			
PLUG,CMTG,TOP,9 5/8,HWE,8.16 MIN/9.06 MA					1	EA			
BASKET - CEMENT - 9-5/8 CSG X 12-1/4					2	EA			
CENTRALIZER-13 3/8"-CSG-17 1/2"-HINGED					3	EA			
Fluid Data									
Stage/Plug #: 1									
Fluid #	Stage Type	Fluid Name	Qty	Qty uom	Mixing Density lbm/gal	Yield ft ³ /sk	Mix Fluid Gal/sk	Rate bbl/min	Total Mix Fluid Gal/sk
1	Fresh Water Spacer		20.0	bbl	8.33			2.5	
2	SwiftCem B2	SWIFTCM (TM) SYSTEM (452990)	130.0	sacks	13.4	1.79	9.51	3.0	9.51
	0.25 lbm	POLY-E-FLAKE (101216940)							
	9.51 Gal	FRESH WATER							
3	Displacement		34.0	bbl	8.33			4.0	
Calculated Values		Pressures		Volumes					
Displacement		Shut In: Instant		Lost Returns		Cement Slurry		Pad	
Top Of Cement		5 Min		Cement Returns		Actual Displacement	34	Treatment	
Frac Gradient		15 Min		Spacers		Load and Breakdown		Total Job	
Rates									
Circulating		Mixing		Displacement		Avg. Job			
Cement Left In Pipe	Amount	0 ft	Reason	Shoe Joint					
Frac Ring # 1 @	ID	Frac ring # 2 @	ID	Frac Ring # 3 @	ID	Frac Ring # 4 @	ID		
The Information Stated Herein Is Correct				Customer Representative Signature					

