

Synergy Resources

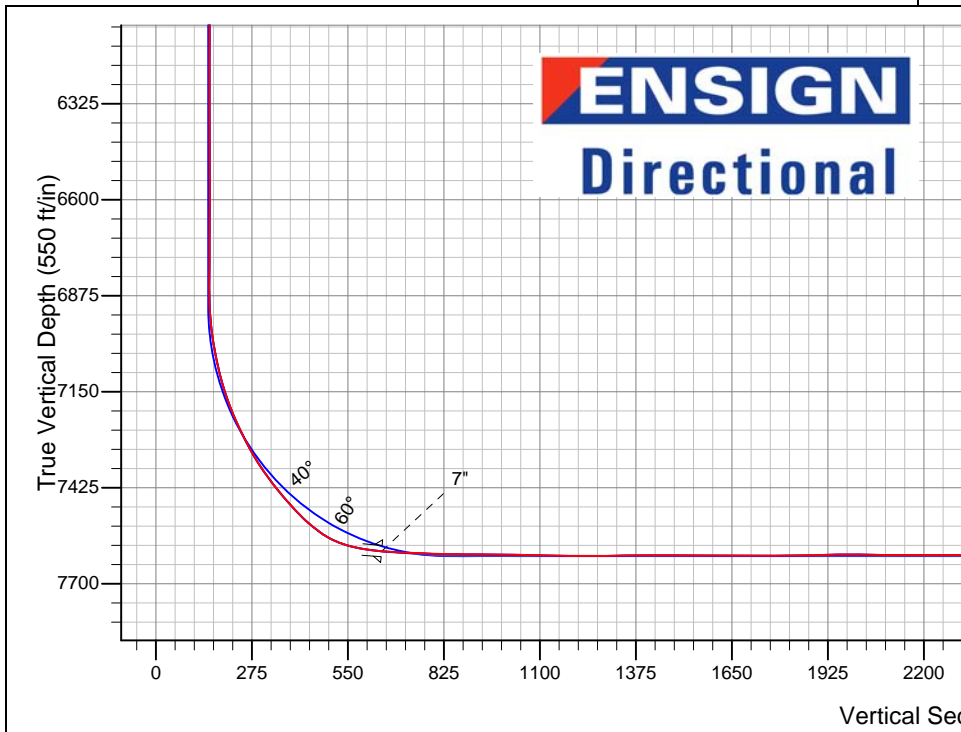
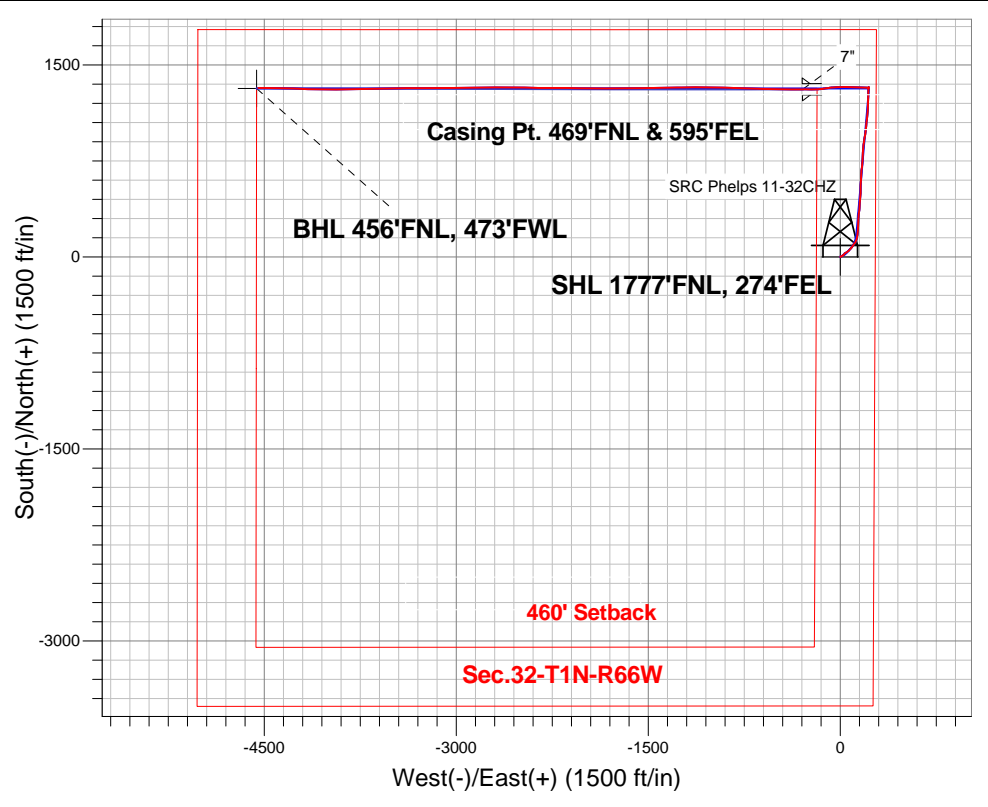
Well Name: **SRC Phelps 11-32CHZ**

Surface Location: SRC Phelps 11-32CHZ Pad Sec.32-T1N-R66W
 North American Datum 1983 , US State Plane 1983 , Colorado Northern Zone
 Ground Elevation: 5018.0

+N/-S	+E/-W	Northing	Easting	Latitude	Longitude	Slot
0.0	0.0	1247305.76	3198190.46	40.010070	-104.792453	
RKB - 12' WELL @ 5030.0ft (RKB - 12')						

FINAL SURVEY

Projected Bottom Hole Location
 12292'MD 7617'TVD 1319'N & 4547'W of
 SHL 90.9 degree Incl @ 270.4 degree
 AZM

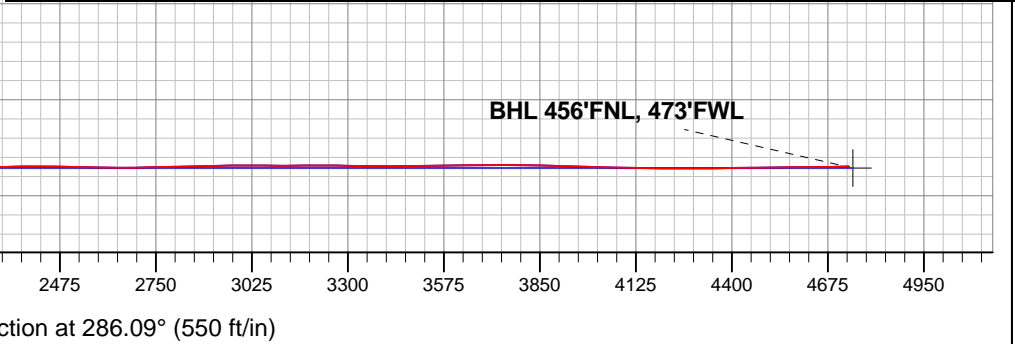


SRC Phelps 11-32CHZ Pad Sec.32-T1N-R66W
 SRC Phelps 11-32CHZ
 Wellbore #1
 11:05, March 28 2014

ANNOTATIONS
 No annotation data is available.

LEGEND

- Wellbore #1
- SRC Phelps 11-32CHZ, Wellbore #1, Plan 4 tied to surveys (2-7-13) V0
- SRC Phelps 11-32CHZ, Wellbore #1, Plan #5 (2-17-14) Tied to Curve survey V0
- Survey #1





Synergy Resources

SEC.32-T1N-R66W

SRC Phelps 11-32CHZ Pad Sec.32-T1N-R66W

SRC Phelps 11-32CHZ

Wellbore #1

Survey: Survey #1

Standard Survey Report

28 March, 2014

Company:	Synergy Resources	Local Co-ordinate Reference:	Well SRC Phelps 11-32CHZ
Project:	SEC.32-T1N-R66W	TVD Reference:	WELL @ 5030.0ft (RKB - 12')
Site:	SRC Phelps 11-32CHZ Pad Sec.32-T1N-R66W	MD Reference:	WELL @ 5030.0ft (RKB - 12')
Well:	SRC Phelps 11-32CHZ	North Reference:	True
Wellbore:	Wellbore #1	Survey Calculation Method:	Minimum Curvature
Design:	Wellbore #1	Database:	Landmark

Project	SEC.32-T1N-R66W, Weld County, Colorado		
Map System:	US State Plane 1983	System Datum:	Mean Sea Level
Geo Datum:	North American Datum 1983		Using Well Reference Point
Map Zone:	Colorado Northern Zone		Using geodetic scale factor

Site	SRC Phelps 11-32CHZ Pad Sec.32-T1N-R66W				
Site Position:		Northing:	1,247,322.38ft	Latitude:	40.010114
From:	Lat/Long	Easting:	3,198,263.72ft	Longitude:	-104.792191
Position Uncertainty:	0.0 ft	Slot Radius:	"	Grid Convergence:	0.46 °

Well	SRC Phelps 11-32CHZ					
Well Position	+N/-S	0.0 ft	Northing:	1,247,305.76 ft	Latitude:	40.010070
	+E/-W	0.0 ft	Easting:	3,198,190.46 ft	Longitude:	-104.792453
Position Uncertainty		0.0 ft	Wellhead Elevation:	ft	Ground Level:	5,018.0 ft

Wellbore	Wellbore #1				
Magnetics	Model Name	Sample Date	Declination (°)	Dip Angle (°)	Field Strength (nT)
	IGRF2010	2/7/2014	8.49	66.64	52,643

Design	Wellbore #1				
Audit Notes:					
Version:	1.0	Phase:	ACTUAL	Tie On Depth:	0.0
Vertical Section:	Depth From (TVD) (ft)	+N/-S (ft)	+E/-W (ft)	Direction (°)	
	0.0	0.0	0.0	286.09	

Survey Program	Date	2/28/2014			
From (ft)	To (ft)	Survey (Wellbore)	Tool Name	Description	
276.0	12,292.0	Survey #1 (Wellbore #1)	MWD	MWD - Standard	

Survey										
Measured Depth (ft)	Inclination (°)	Azimuth (°)	Vertical Depth (ft)	+N/-S (ft)	+E/-W (ft)	Vertical Section (ft)	Dogleg Rate (°/100ft)	Build Rate (°/100ft)	Turn Rate (°/100ft)	
0.0	0.00	0.00	0.0	0.0	0.0	0.0	0.00	0.00	0.00	
1.0	0.00	35.60	1.0	0.0	0.0	0.0	0.33	0.33	0.00	
SHL 1777'FNL, 274'FEL										
276.0	0.90	35.60	276.0	1.8	1.3	-0.7	0.33	0.33	0.00	
306.0	1.00	71.60	306.0	2.0	1.6	-1.0	1.98	0.33	120.00	
337.0	1.10	71.60	337.0	2.2	2.2	-1.5	0.32	0.32	0.00	
367.0	1.60	73.20	367.0	2.4	2.9	-2.1	1.67	1.67	5.33	
397.0	2.20	68.80	397.0	2.8	3.8	-2.9	2.06	2.00	-14.67	
428.0	3.00	65.10	427.9	3.3	5.1	-4.0	2.64	2.58	-11.94	
460.0	3.60	63.90	459.9	4.1	6.8	-5.3	1.89	1.88	-3.75	
491.0	4.30	69.10	490.8	5.0	8.7	-7.0	2.53	2.26	16.77	
522.0	4.90	69.30	521.7	5.8	11.0	-9.0	1.94	1.94	0.65	
553.0	5.60	69.70	552.6	6.8	13.7	-11.3	2.26	2.26	1.29	

Company:	Synergy Resources	Local Co-ordinate Reference:	Well SRC Phelps 11-32CHZ
Project:	SEC.32-T1N-R66W	TVD Reference:	WELL @ 5030.0ft (RKB - 12')
Site:	SRC Phelps 11-32CHZ Pad Sec.32-T1N-R66W	MD Reference:	WELL @ 5030.0ft (RKB - 12')
Well:	SRC Phelps 11-32CHZ	North Reference:	True
Wellbore:	Wellbore #1	Survey Calculation Method:	Minimum Curvature
Design:	Wellbore #1	Database:	Landmark

Survey										
Measured Depth (ft)	Inclination (°)	Azimuth (°)	Vertical Depth (ft)	+N/-S (ft)	+E/-W (ft)	Vertical Section (ft)	Dogleg Rate (°/100ft)	Build Rate (°/100ft)	Turn Rate (°/100ft)	
584.0	5.70	67.00	583.4	8.0	16.5	-13.7	0.92	0.32	-8.71	
616.0	5.50	62.30	615.3	9.3	19.3	-16.0	1.56	-0.63	-14.69	
647.0	5.90	48.80	646.1	11.0	21.9	-17.9	4.50	1.29	-43.55	
678.0	6.90	38.60	676.9	13.5	24.2	-19.5	4.87	3.23	-32.90	
709.0	6.90	33.60	707.7	16.5	26.4	-20.8	1.94	0.00	-16.13	
771.0	6.90	40.50	769.2	22.5	30.9	-23.5	1.34	0.00	11.13	
834.0	7.30	51.40	831.8	27.8	36.5	-27.3	2.23	0.63	17.30	
896.0	7.80	60.00	893.2	32.4	43.2	-32.5	1.99	0.81	13.87	
959.0	9.10	58.40	955.5	37.2	51.1	-38.8	2.10	2.06	-2.54	
1,021.0	10.20	54.80	1,016.7	42.9	59.8	-45.6	2.02	1.77	-5.81	
1,083.0	11.20	42.20	1,077.6	50.5	68.3	-51.7	4.09	1.61	-20.32	
1,146.0	11.80	42.10	1,139.3	59.8	76.8	-57.2	0.95	0.95	-0.16	
1,239.0	10.00	35.20	1,230.7	73.5	87.8	-64.0	2.39	-1.94	-7.42	
1,362.0	9.50	37.20	1,351.9	90.3	100.1	-71.1	0.49	-0.41	1.63	
1,486.0	10.60	35.90	1,474.0	107.7	113.0	-78.7	0.91	0.89	-1.05	
1,610.0	12.60	21.20	1,595.5	129.5	124.6	-83.8	2.87	1.61	-11.85	
1,733.0	15.20	10.40	1,714.9	157.9	132.3	-83.4	2.98	2.11	-8.78	
1,857.0	16.60	3.60	1,834.1	191.6	136.4	-77.9	1.88	1.13	-5.48	
1,980.0	17.30	3.10	1,951.8	227.4	138.5	-70.0	0.58	0.57	-0.41	
2,104.0	16.90	2.30	2,070.3	263.8	140.2	-61.6	0.37	-0.32	-0.65	
2,226.0	15.50	2.20	2,187.5	297.8	141.5	-53.4	1.15	-1.15	-0.08	
2,350.0	16.20	7.10	2,306.7	331.5	144.3	-46.7	1.22	0.56	3.95	
2,473.0	14.90	6.90	2,425.2	364.3	148.3	-41.5	1.06	-1.06	-0.16	
2,597.0	15.80	2.20	2,544.8	397.0	150.9	-34.9	1.24	0.73	-3.79	
2,720.0	17.50	3.80	2,662.7	432.2	152.7	-27.0	1.43	1.38	1.30	
2,844.0	15.20	5.50	2,781.6	466.9	155.5	-20.0	1.89	-1.85	1.37	
2,969.0	16.90	3.60	2,901.8	501.4	158.2	-13.1	1.42	1.36	-1.52	
3,096.0	16.80	358.80	3,023.3	538.2	159.0	-3.6	1.10	-0.08	-3.78	
3,223.0	17.90	2.90	3,144.5	576.0	159.6	6.3	1.29	0.87	3.23	
3,349.0	17.00	3.20	3,264.7	613.7	161.6	14.8	0.72	-0.71	0.24	
3,476.0	16.10	2.20	3,386.5	649.9	163.3	23.2	0.74	-0.71	-0.79	
3,603.0	17.10	9.60	3,508.2	685.9	167.1	29.5	1.84	0.79	5.83	
3,730.0	16.80	4.10	3,629.7	722.6	171.6	35.4	1.28	-0.24	-4.33	
3,856.0	18.10	2.30	3,749.9	760.3	173.6	43.9	1.12	1.03	-1.43	
3,983.0	17.40	4.10	3,870.8	799.0	175.8	52.5	0.70	-0.55	1.42	
4,110.0	16.80	5.00	3,992.2	836.2	178.8	60.0	0.52	-0.47	0.71	
4,237.0	14.90	5.70	4,114.4	870.7	182.0	66.5	1.50	-1.50	0.55	
4,364.0	14.00	5.50	4,237.4	902.3	185.1	72.3	0.71	-0.71	-0.16	
4,491.0	16.80	13.10	4,359.8	935.5	190.7	76.0	2.71	2.20	5.98	
4,618.0	17.70	6.90	4,481.1	972.5	197.2	80.1	1.61	0.71	-4.88	
4,745.0	16.70	2.90	4,602.4	1,009.9	200.4	87.3	1.22	-0.79	-3.15	
4,872.0	15.70	6.40	4,724.4	1,045.2	203.3	94.4	1.10	-0.79	2.76	
4,999.0	18.10	7.60	4,845.9	1,081.8	207.8	100.2	1.91	1.89	0.94	
5,126.0	21.50	5.00	4,965.4	1,124.6	212.4	107.6	2.76	2.68	-2.05	
5,253.0	19.20	2.70	5,084.4	1,168.6	215.4	116.9	1.92	-1.81	-1.81	
5,380.0	15.20	0.80	5,205.7	1,206.2	216.7	126.1	3.18	-3.15	-1.50	
5,507.0	13.70	1.80	5,328.7	1,237.8	217.4	134.2	1.20	-1.18	0.79	
5,633.0	11.10	2.70	5,451.8	1,264.9	218.4	140.7	2.07	-2.06	0.71	
5,760.0	9.10	1.30	5,576.8	1,287.1	219.2	146.1	1.59	-1.57	-1.10	
5,887.0	6.30	3.40	5,702.6	1,304.1	219.9	150.2	2.22	-2.20	1.65	
6,014.0	3.70	2.00	5,829.1	1,315.2	220.4	152.7	2.05	-2.05	-1.10	
6,142.0	1.50	12.40	5,957.0	1,320.9	220.9	153.9	1.75	-1.72	8.13	
6,269.0	0.30	52.30	6,084.0	1,322.8	221.5	153.8	1.01	-0.94	31.42	
6,395.0	0.40	150.70	6,210.0	1,322.6	222.0	153.3	0.42	0.08	78.10	

Company:	Synergy Resources	Local Co-ordinate Reference:	Well SRC Phelps 11-32CHZ
Project:	SEC.32-T1N-R66W	TVD Reference:	WELL @ 5030.0ft (RKB - 12')
Site:	SRC Phelps 11-32CHZ Pad Sec.32-T1N-R66W	MD Reference:	WELL @ 5030.0ft (RKB - 12')
Well:	SRC Phelps 11-32CHZ	North Reference:	True
Wellbore:	Wellbore #1	Survey Calculation Method:	Minimum Curvature
Design:	Wellbore #1	Database:	Landmark

Survey										
Measured Depth (ft)	Inclination (°)	Azimuth (°)	Vertical Depth (ft)	+N/-S (ft)	+E/-W (ft)	Vertical Section (ft)	Dogleg Rate (°/100ft)	Build Rate (°/100ft)	Turn Rate (°/100ft)	
6,523.0	0.20	345.80	6,338.0	1,322.4	222.2	153.1	0.47	-0.16	-128.83	
6,650.0	1.10	335.80	6,465.0	1,323.7	221.6	154.0	0.71	0.71	-7.87	
6,777.0	1.10	175.80	6,592.0	1,323.6	221.2	154.3	1.71	0.00	-125.98	
6,904.0	1.10	172.20	6,718.9	1,321.2	221.5	153.4	0.05	0.00	-2.83	
6,983.0	0.60	159.00	6,797.9	1,320.1	221.7	152.8	0.68	-0.63	-16.71	
6,998.0	0.50	163.40	6,812.9	1,319.9	221.8	152.8	0.72	-0.67	29.33	
7,030.0	0.40	178.80	6,844.9	1,319.7	221.8	152.7	0.49	-0.31	48.13	
7,062.0	1.20	263.60	6,876.9	1,319.5	221.5	152.9	3.84	2.50	265.00	
7,094.0	2.60	272.90	6,908.9	1,319.5	220.4	153.9	4.47	4.38	29.06	
7,126.0	4.70	278.30	6,940.9	1,319.8	218.4	156.0	6.64	6.56	16.88	
7,157.0	6.80	278.90	6,971.7	1,320.2	215.3	159.0	6.78	6.77	1.94	
7,189.0	8.90	274.10	7,003.4	1,320.7	211.0	163.3	6.87	6.56	-15.00	
7,221.0	10.90	272.20	7,034.9	1,321.0	205.5	168.7	6.33	6.25	-5.94	
7,252.0	12.70	271.50	7,065.3	1,321.2	199.2	174.8	5.82	5.81	-2.26	
7,284.0	14.20	275.00	7,096.4	1,321.6	191.7	182.1	5.33	4.69	10.94	
7,316.0	16.40	274.10	7,127.2	1,322.3	183.3	190.4	6.91	6.88	-2.81	
7,348.0	18.50	274.10	7,157.8	1,323.0	173.7	199.7	6.56	6.56	0.00	
7,379.0	21.10	271.60	7,186.9	1,323.5	163.3	210.0	8.82	8.39	-8.06	
7,411.0	23.70	270.10	7,216.5	1,323.7	151.1	221.7	8.32	8.13	-4.69	
7,443.0	25.60	269.40	7,245.6	1,323.6	137.7	234.5	6.01	5.94	-2.19	
7,475.0	27.40	270.20	7,274.2	1,323.6	123.4	248.2	5.73	5.63	2.50	
7,506.0	28.80	272.20	7,301.6	1,323.9	108.8	262.3	5.44	4.52	6.45	
7,538.0	30.80	273.10	7,329.3	1,324.6	93.0	277.8	6.40	6.25	2.81	
7,570.0	33.20	272.70	7,356.5	1,325.5	76.0	294.3	7.53	7.50	-1.25	
7,601.0	35.50	272.00	7,382.1	1,326.2	58.5	311.3	7.53	7.42	-2.26	
7,633.0	37.80	272.20	7,407.7	1,326.9	39.5	329.8	7.20	7.19	0.63	
7,665.0	40.10	270.80	7,432.6	1,327.4	19.4	349.3	7.70	7.19	-4.38	
7,696.0	42.30	268.70	7,456.0	1,327.3	-1.1	368.9	8.38	7.10	-6.77	
7,728.0	43.60	265.80	7,479.4	1,326.2	-22.8	389.5	7.39	4.06	-9.06	
7,760.0	46.90	265.10	7,501.9	1,324.4	-45.5	410.8	10.43	10.31	-2.19	
7,792.0	50.40	263.60	7,523.0	1,322.1	-69.4	433.1	11.49	10.94	-4.69	
7,823.0	53.90	261.80	7,542.1	1,319.0	-93.7	455.6	12.18	11.29	-5.81	
7,855.0	59.10	261.30	7,559.7	1,315.0	-120.0	479.8	16.30	16.25	-1.56	
7,887.0	66.00	264.30	7,574.5	1,311.5	-148.2	505.9	23.11	21.56	9.38	
7,919.0	72.20	267.20	7,585.9	1,309.3	-178.0	533.9	21.14	19.38	9.06	
7,950.0	76.30	268.50	7,594.3	1,308.2	-207.8	562.2	13.83	13.23	4.19	
7,982.0	80.80	270.60	7,600.6	1,307.9	-239.2	592.3	15.46	14.06	6.56	
7,995.0	82.90	271.10	7,602.5	1,308.1	-252.0	604.7	16.60	16.15	3.85	
8,064.0	86.70	268.60	7,608.7	1,307.9	-320.7	670.7	6.58	5.51	-3.62	
8,127.0	87.40	270.90	7,612.0	1,307.7	-383.6	731.0	3.81	1.11	3.65	
8,191.0	88.40	270.60	7,614.3	1,308.5	-447.6	792.7	1.63	1.56	-0.47	
8,254.0	89.20	271.50	7,615.6	1,309.7	-510.6	853.5	1.91	1.27	1.43	
8,318.0	90.40	271.60	7,615.9	1,311.4	-574.5	915.5	1.88	1.88	0.16	
8,382.0	89.00	272.20	7,616.2	1,313.5	-638.5	977.5	2.38	-2.19	0.94	
8,445.0	88.20	271.60	7,617.7	1,315.6	-701.4	1,038.6	1.59	-1.27	-0.95	
8,508.0	88.80	271.80	7,619.4	1,317.5	-764.4	1,099.6	1.00	0.95	0.32	
8,572.0	89.60	271.80	7,620.3	1,319.5	-828.4	1,161.6	1.25	1.25	0.00	
8,635.0	90.30	271.60	7,620.3	1,321.4	-891.3	1,222.6	1.16	1.11	-0.32	
8,699.0	90.30	270.80	7,620.0	1,322.7	-955.3	1,284.5	1.25	0.00	-1.25	
8,762.0	90.70	270.60	7,619.5	1,323.5	-1,018.3	1,345.2	0.71	0.63	-0.32	
8,826.0	90.40	270.20	7,618.8	1,323.9	-1,082.3	1,406.8	0.78	-0.47	-0.63	
8,889.0	90.10	270.20	7,618.6	1,324.1	-1,145.3	1,467.4	0.48	-0.48	0.00	
8,953.0	90.00	269.20	7,618.5	1,323.8	-1,209.3	1,528.8	1.57	-0.16	-1.56	
9,017.0	88.80	268.10	7,619.2	1,322.3	-1,273.3	1,589.9	2.54	-1.88	-1.72	

Company:	Synergy Resources	Local Co-ordinate Reference:	Well SRC Phelps 11-32CHZ
Project:	SEC.32-T1N-R66W	TVD Reference:	WELL @ 5030.0ft (RKB - 12')
Site:	SRC Phelps 11-32CHZ Pad Sec.32-T1N-R66W	MD Reference:	WELL @ 5030.0ft (RKB - 12')
Well:	SRC Phelps 11-32CHZ	North Reference:	True
Wellbore:	Wellbore #1	Survey Calculation Method:	Minimum Curvature
Design:	Wellbore #1	Database:	Landmark

Survey									
Measured Depth (ft)	Inclination (°)	Azimuth (°)	Vertical Depth (ft)	+N/-S (ft)	+E/-W (ft)	Vertical Section (ft)	Dogleg Rate (°/100ft)	Build Rate (°/100ft)	Turn Rate (°/100ft)
9,080.0	89.60	268.60	7,620.1	1,320.5	-1,336.2	1,649.9	1.50	1.27	0.79
9,144.0	90.00	268.80	7,620.3	1,319.0	-1,400.2	1,710.9	0.70	0.63	0.31
9,207.0	90.70	269.20	7,619.9	1,317.9	-1,463.2	1,771.2	1.28	1.11	0.63
9,271.0	90.80	270.10	7,619.1	1,317.5	-1,527.2	1,832.5	1.41	0.16	1.41
9,334.0	91.30	269.90	7,617.9	1,317.5	-1,590.2	1,893.1	0.85	0.79	-0.32
9,398.0	90.70	270.10	7,616.8	1,317.5	-1,654.2	1,954.5	0.99	-0.94	0.31
9,461.0	89.30	269.50	7,616.8	1,317.3	-1,717.2	2,015.0	2.42	-2.22	-0.95
9,525.0	89.40	269.20	7,617.5	1,316.6	-1,781.2	2,076.3	0.49	0.16	-0.47
9,588.0	89.70	269.00	7,618.0	1,315.6	-1,844.2	2,136.5	0.57	0.48	-0.32
9,652.0	90.00	269.70	7,618.2	1,314.9	-1,908.2	2,197.8	1.19	0.47	1.09
9,715.0	90.30	270.80	7,618.0	1,315.1	-1,971.2	2,258.4	1.81	0.48	1.75
9,779.0	90.70	271.60	7,617.5	1,316.5	-2,035.1	2,320.3	1.40	0.63	1.25
9,842.0	90.50	272.00	7,616.8	1,318.5	-2,098.1	2,381.3	0.71	-0.32	0.63
9,906.0	89.40	270.20	7,616.9	1,319.7	-2,162.1	2,443.1	3.30	-1.72	-2.81
9,969.0	89.20	269.20	7,617.6	1,319.4	-2,225.1	2,503.6	1.62	-0.32	-1.59
10,033.0	88.90	270.20	7,618.7	1,319.0	-2,289.1	2,565.0	1.63	-0.47	1.56
10,096.0	89.00	270.80	7,619.8	1,319.6	-2,352.1	2,625.6	0.97	0.16	0.95
10,160.0	91.00	271.30	7,619.8	1,320.7	-2,416.0	2,687.4	3.22	3.13	0.78
10,223.0	91.60	270.90	7,618.4	1,322.0	-2,479.0	2,748.3	1.14	0.95	-0.63
10,287.0	90.60	270.40	7,617.2	1,322.7	-2,543.0	2,810.0	1.75	-1.56	-0.78
10,350.0	91.30	270.60	7,616.1	1,323.2	-2,606.0	2,870.6	1.16	1.11	0.32
10,414.0	91.50	270.40	7,614.6	1,323.8	-2,670.0	2,932.3	0.44	0.31	-0.31
10,477.0	90.20	269.00	7,613.6	1,323.5	-2,733.0	2,992.7	3.03	-2.06	-2.22
10,541.0	89.60	269.00	7,613.7	1,322.3	-2,796.9	3,053.9	0.94	-0.94	0.00
10,604.0	89.60	269.20	7,614.2	1,321.4	-2,859.9	3,114.1	0.32	0.00	0.32
10,668.0	90.50	269.20	7,614.1	1,320.5	-2,923.9	3,175.4	1.41	1.41	0.00
10,731.0	90.20	269.70	7,613.7	1,319.9	-2,986.9	3,235.7	0.93	-0.48	0.79
10,795.0	88.90	269.70	7,614.3	1,319.5	-3,050.9	3,297.1	2.03	-2.03	0.00
10,858.0	88.90	269.30	7,615.5	1,319.0	-3,113.9	3,357.5	0.63	0.00	-0.63
10,939.0	90.40	269.70	7,616.0	1,318.3	-3,194.9	3,435.1	1.92	1.85	0.49
11,003.0	91.20	270.60	7,615.1	1,318.4	-3,258.9	3,496.6	1.88	1.25	1.41
11,066.0	90.60	269.70	7,614.1	1,318.6	-3,321.9	3,557.2	1.72	-0.95	-1.43
11,129.0	90.50	269.20	7,613.5	1,318.0	-3,384.9	3,617.6	0.81	-0.16	-0.79
11,193.0	90.40	269.30	7,613.0	1,317.2	-3,448.9	3,678.8	0.22	-0.16	0.16
11,256.0	89.80	268.80	7,612.9	1,316.1	-3,511.9	3,739.0	1.24	-0.95	-0.79
11,320.0	89.90	268.60	7,613.0	1,314.7	-3,575.8	3,800.1	0.35	0.16	-0.31
11,383.0	88.80	268.50	7,613.7	1,313.1	-3,638.8	3,860.2	1.75	-1.75	-0.16
11,447.0	88.50	267.90	7,615.2	1,311.1	-3,702.8	3,921.1	1.05	-0.47	-0.94
11,510.0	88.00	268.30	7,617.2	1,309.0	-3,765.7	3,981.0	1.02	-0.79	0.63
11,574.0	88.50	268.80	7,619.1	1,307.3	-3,829.6	4,042.0	1.10	0.78	0.78
11,637.0	88.90	269.70	7,620.6	1,306.5	-3,892.6	4,102.2	1.56	0.63	1.43
11,701.0	89.40	270.80	7,621.5	1,306.8	-3,956.6	4,163.8	1.89	0.78	1.72
11,764.0	89.30	271.50	7,622.2	1,308.1	-4,019.6	4,224.7	1.12	-0.16	1.11
11,828.0	90.70	271.60	7,622.2	1,309.8	-4,083.6	4,286.6	2.19	2.19	0.16
11,891.0	91.00	271.60	7,621.3	1,311.6	-4,146.5	4,347.6	0.48	0.48	0.00
11,955.0	90.70	271.30	7,620.3	1,313.2	-4,210.5	4,409.5	0.66	-0.47	-0.47
12,018.0	90.40	271.50	7,619.7	1,314.7	-4,273.5	4,470.5	0.57	-0.48	0.32
12,081.0	90.70	271.30	7,619.1	1,316.3	-4,336.5	4,531.4	0.57	0.48	-0.32
12,145.0	90.40	271.30	7,618.5	1,317.7	-4,400.5	4,593.3	0.47	-0.47	0.00
12,237.0	90.90	270.40	7,617.5	1,319.1	-4,492.4	4,682.0	1.12	0.54	-0.98
12,292.0	90.90	270.40	7,616.6	1,319.5	-4,547.4	4,735.0	0.00	0.00	0.00
BHL 460'FNL, 460'FWL									

Company: Synergy Resources	Local Co-ordinate Reference: Well SRC Phelps 11-32CHZ
Project: SEC.32-T1N-R66W	TVD Reference: WELL @ 5030.0ft (RKB - 12')
Site: SRC Phelps 11-32CHZ Pad Sec.32-T1N-R66W	MD Reference: WELL @ 5030.0ft (RKB - 12')
Well: SRC Phelps 11-32CHZ	North Reference: True
Wellbore: Wellbore #1	Survey Calculation Method: Minimum Curvature
Design: Wellbore #1	Database: Landmark

Checked By: _____ Approved By: _____ Date: _____