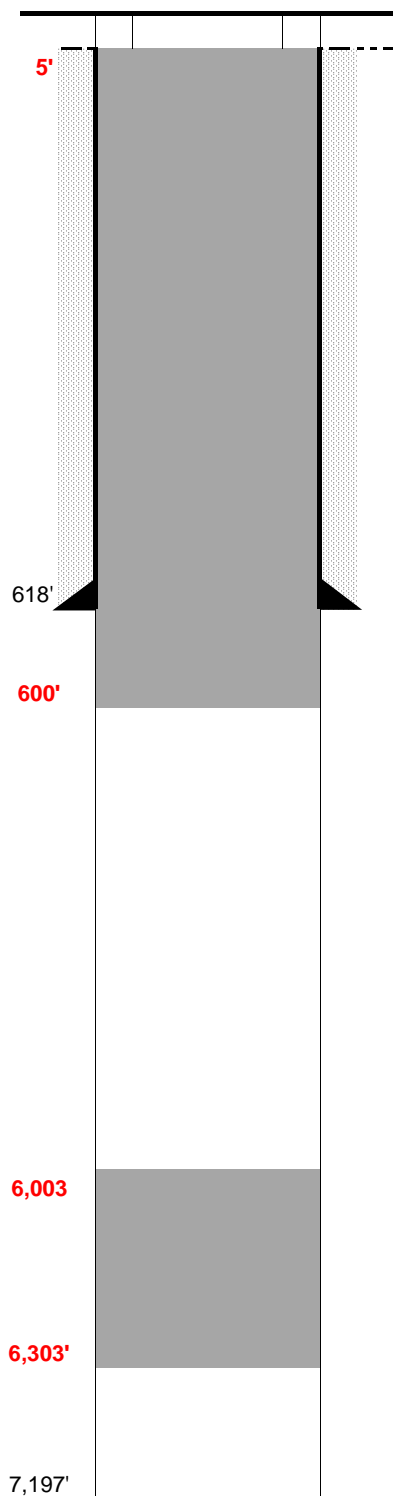


PROPOSED WBD

**WELL NAME:** Hill L  
**OPERATOR:** Petroleum Energy Corp.  
**COMP ZONE:** Dry Hole  
**LOCATION:** 8N 61W S26 NW SW

**COUNTY:** Weld  
**STATE:** Colorado  
**API :** 05-123-14042

**SPUD:** 8/12/88  
**P&A:** 8/18/88  
**GL:** 4,989'



**SURFACE CASING**

DEPTH: 618' SIZE: 8.625" GRADE: H-40 WT (#/ft): 28.0  
 CEMENT: 370 sx of Regular  
 COMMENTS: \_\_\_\_\_

**PRODUCTION CASING**

DEPTH: \_\_\_\_\_ SIZE: \_\_\_\_\_ GRADE: \_\_\_\_\_ WT (#/ft): \_\_\_\_\_  
 CEMENT: \_\_\_\_\_ TOC: \_\_\_\_\_  
 COMMENTS: \_\_\_\_\_

PERFS: \_\_\_\_\_ - \_\_\_\_\_ PROD ZONE 1: \_\_\_\_\_  
 PERFS: \_\_\_\_\_ - \_\_\_\_\_ ZONE 2: \_\_\_\_\_  
 PERFS: \_\_\_\_\_ - \_\_\_\_\_ ZONE 3: \_\_\_\_\_

**PREVIOUS PLUGS**

RECOVERED: \_\_\_\_\_ SIZE: \_\_\_\_\_  
 CMT 1: 640' - 590' COMMENT: 25 sx Cement  
 CMT 2: 30' - 4' COMMENT: 10 sx Cement  
 CMT 3: \_\_\_\_\_ - \_\_\_\_\_ COMMENT: \_\_\_\_\_

**PROPOSED:** Plug #1: 6,303' to 6,003' (300' at top of Niobrara)  
Plug #2: 600' to Surface (Isolate FW Sands)

**FORMATIONS:**

NIORARA: 6,303'  
 \_\_\_\_\_  
 CODELL \_\_\_\_\_  
 D SAND 7,070'  
 D SILT \_\_\_\_\_  
 J SAND 7,139'