



FILE NO: USCH086322	COMPANY WPX ENERGY INC
API NO: 05045221510000	WELL WPX ENERGY PA 444-3
	FIELD PARACHUTE
	COUNTY GARFIELD
	STATE CO
Ver. 3.87 S3 T7S R95W PAD: GV 86-2 AZTEC 1000	LOCATION: SHL: 2029' FSL 1548' FWL S2 T7S R95W BHL: 618' FSL 595' FEL S3 T7S R95W SEC 3 TWP 7S RGE 95W
PERMANENT DATUM LOG MEASURED FROM DRILL. MEAS. FROM	OTHER SERVICES RPM ELEVATIONS: KB 5846 FT DF GL 5821 FT
GL 25 FT ABOVE P.D.	
KB	
GL	
DATE	18-May-2014
RUN	TRIP
SERVICE ORDER	1
DEPTH DRILLER	US086322
DEPTH LOGGER	8054 FT
BOTTOM LOGGED INTERVAL	8029 FT
TOP LOGGED INTERVAL	8019 FT
TIME STARTED	4518 FT
TIME FINISHED	1300
OPERATOR RIG TIME	1930
TYPE OF FLUID IN HOLE	6.5 HR
FLUID DENSITY	WATER
FLUID SALINITY	NA
FLUID LEVEL	NA
LOGGED CEMENT TOP	71 FT
WELLHEAD PRESSURE	NA
MAXIMUM HOLE DEVIATION	0 PSI
NOMINAL LOGGING SPEED	NA
MAX. RECORDED TEMP.	65 FMN
REFERENCE LOG	217 DEGF
REFERENCE LOG DATE	BAKER HUGHES BOND LOG
EQUIP. NO.	18-MAY-2014
RECORDED BY	6670
WITNESSED BY	SMITH/NEWEILL
	GRAND JCT
	D WELSH

IN MAKING INTERPRETATIONS OF LOGS OUR EMPLOYEES WILL GIVE THE CUSTOMER THE BENEFIT OF THEIR BEST JUDGEMENT. BUT SINCE ALL INTERPRETATIONS ARE OPINIONS BASED ON INFERENCES FROM ELECTRICAL OR OTHER MEASUREMENTS, WE CANNOT, AND WE DO NOT GUARANTEE THE ACCURACY OR CORRECTNESS OF ANY INTERPRETATION. WE SHALL NOT BE LIABLE OR RESPONSIBLE FOR ANY LOSS, COST, DAMAGES, OR EXPENSES WHATSOEVER INCURRED OR SUSTAINED BY THE CUSTOMER RESULTING FROM ANY INTERPRETATION MADE BY ANY OF OUR EMPLOYEES.

BOREHOLE RECORD		
BIT SIZE	FROM	TO
13.5 IN	0 FT	1281 FT
8.75 IN	1281 FT	8099 FT

CASING RECORD				
SIZE	WEIGHT	GRADE	FROM	TO
9.625 IN	32.32 LB/F		0 FT	1281 FT
4.5 IN	11.6 LB/F		0 FT	8099 FT

REMARKS

RUN 1 TRIP 1: ALL DATA ON THIS LOG IS SHIFTED USING THE CCL CURVE TO PLACE THE WELLHEAD (TOP CCL MARK) ON DEPTH WITH GROUND LEVEL ELEVATION AT CLIENT'S REQUEST

THE DEPTH MATCHING PROCESS CREATES POTENTIAL FOR COLLAR LENGTHS TO VARY FROM THOSE RECORDED ON OTHER CASED HOLE WIRELINE UNITS WITHOUT GAMMA RAY REFERENCE

AMOUNT LINEAR SHIFT +2.0

LOGGED WITH 0 PSI AT WELL HEAD

BHT = 217 DEGF

SJ = 4533' - 4554'

THANK YOU FOR CHOOSING BAKER HUGHES WIRELINE SERVICES

CREW: SMITH/NEWELL/COATE

EQUIPMENT DATA

RUN	TRIP	TOOL	SERIES NO.	SERIAL NO.	POSITION
1	1	PCM PWR SUP	8250EA	10408796	FREE
1	1	TELE/CCL	8248ED	10590814	FREE
1	1	GAMMA RAY	8262XA	10317216	FREE
1	1	RPM ELEC	8281EA	10294757	FREE
1	1	RPM	8283PA	10466231	FREE
1	1	RPM FA	8281FA	10307727	FREE
1	1	TEMP	8255XA	11774568	FREE

MAIN SECTION PNC 3-D MODE

ECLIPS 6.2i ECLIPS General Release Rel 6.2i Wed Jun 12 12:21:40 CDT 2013

Updates: 1

Plotted: Mon May 19 09:11:40 2014

PARAMETER AND FILTER SUMMARY REPORT

FILE: /dat1a/CH086322/n353h02.prm
LOGGING MODE: DEPTH DIRECTION: UP
TOP DEPTH: 4491.750 ft BOTTOM DEPTH: 8034.750 ft

SYMMETRIC FILTER

MEASUREMENT TYPE	PARAMETER	VALUE	UNITS	INTERVAL (ft)
GR	FILTER ()	medium (1)		TOP BOTTOM

RPM PROCESSING

MEASUREMENT TYPE	PARAMETER	VALUE	UNITS	INTERVAL (ft)
PNC Parameters	BOREHOLE CONTENTS	FLUID		TOP BOTTOM
	OPEN/CASED HOLE	CASED HOLE		" "
	BOREHOLE SIZE	8.75	in	" "
	CASING SIZE	4.50	in	" "
	MATRIX	SANDSTONE		" "
	CORRECTION BUFFER	11		" "

CURVE DESCRIPTION REPORT

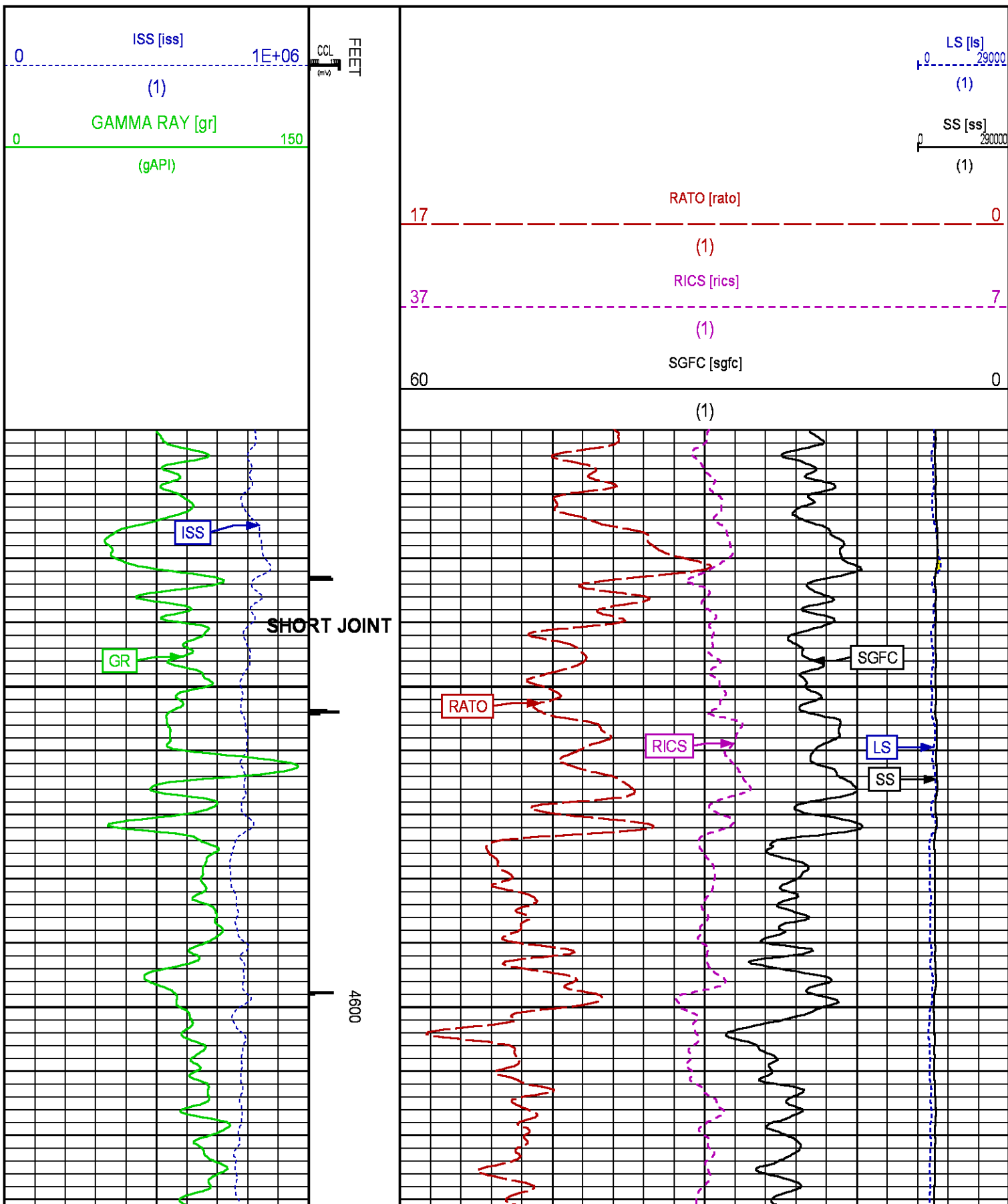
CURVE NAME	CREATION DATE	CURVE DESCRIPTION
F1:CCL	May 19 08:39:18 2014	CASING COLLAR LOCATOR
F1:GR	May 19 08:39:19 2014	GAMMA RAY
F1:ISS	May 19 08:39:19 2014	INELASTIC SHORT SPACE COUNT RATE
F1:LS	May 19 08:39:19 2014	LONG SPACE COUNT RATE
F1:RATO	May 19 08:39:20 2014	SHORT/LONG SPACE COUNT RATE RATIO
F1:RICS	May 19 08:39:20 2014	SHORT SPACE INELASTIC TO CAPTURE COUNT RATE RATIO (ISS/CSS)
F1:SGFC	May 19 08:39:21 2014	CORRECTED FORMATION SIGMA
F1:SS	May 19 08:39:21 2014	SHORT SPACE COUNT RATE

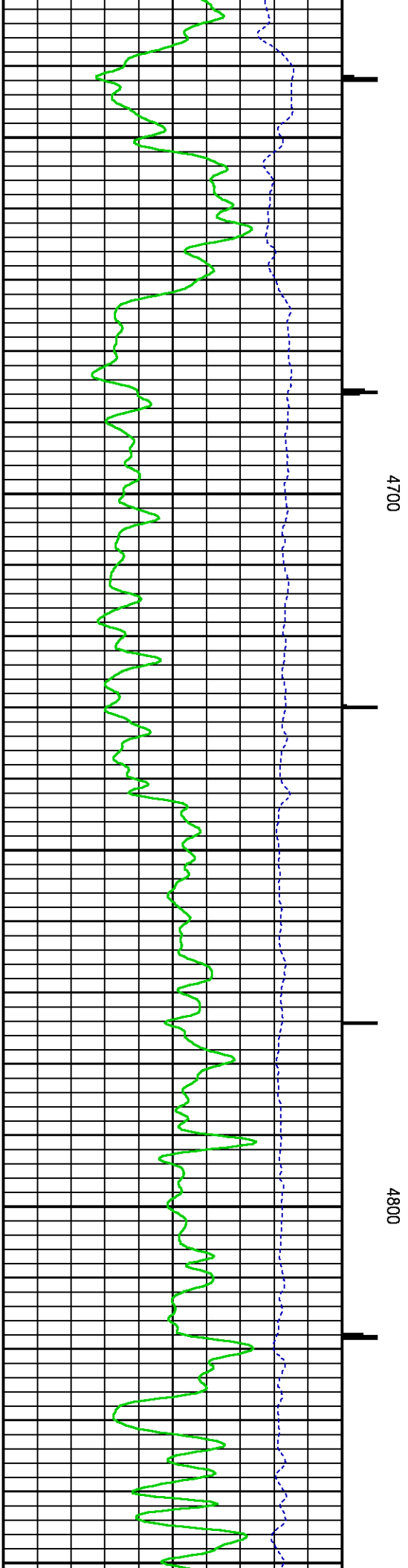
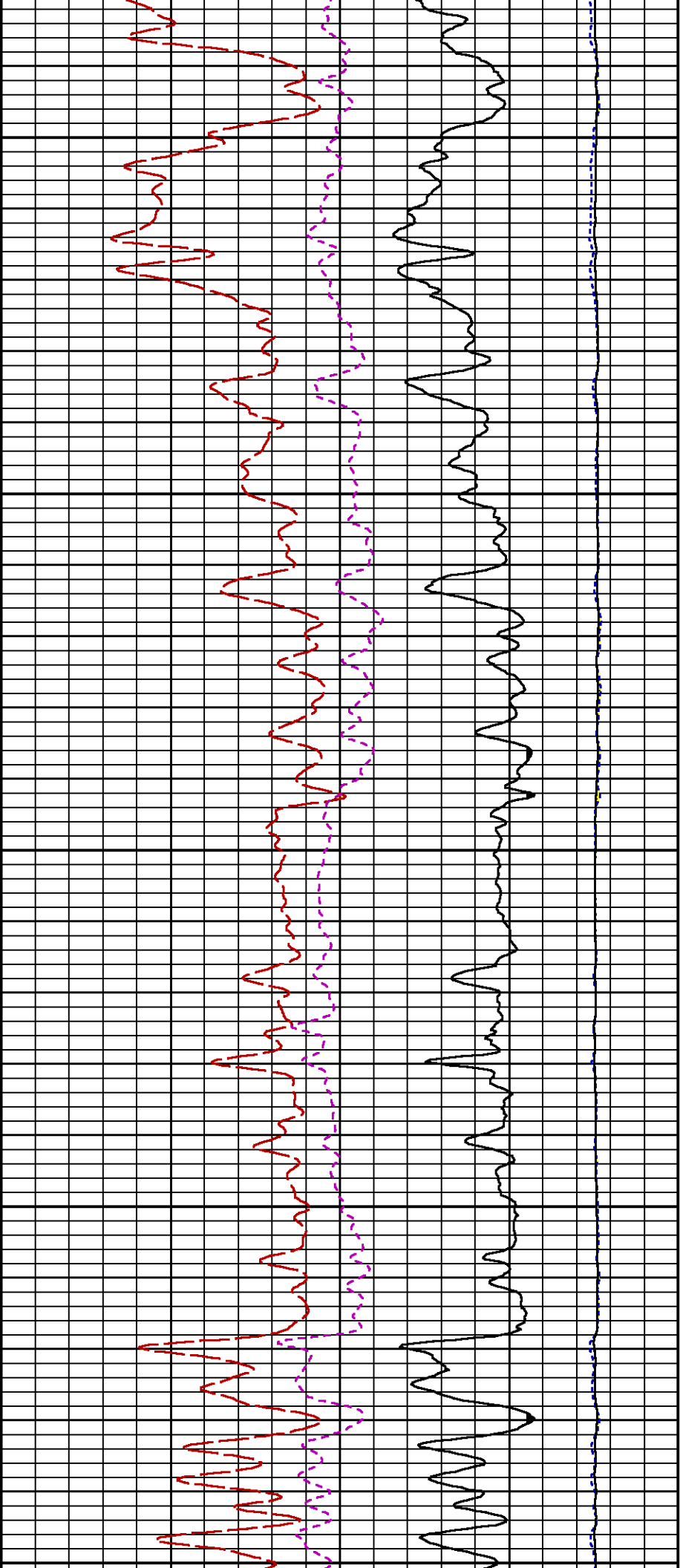
CURVE MEASURE POINT OFFSET

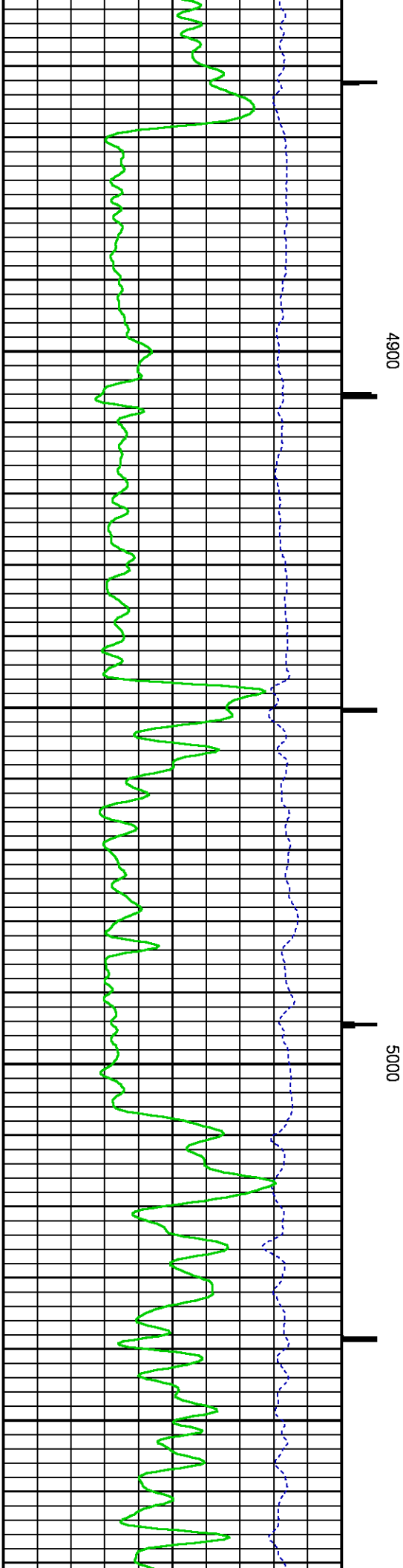
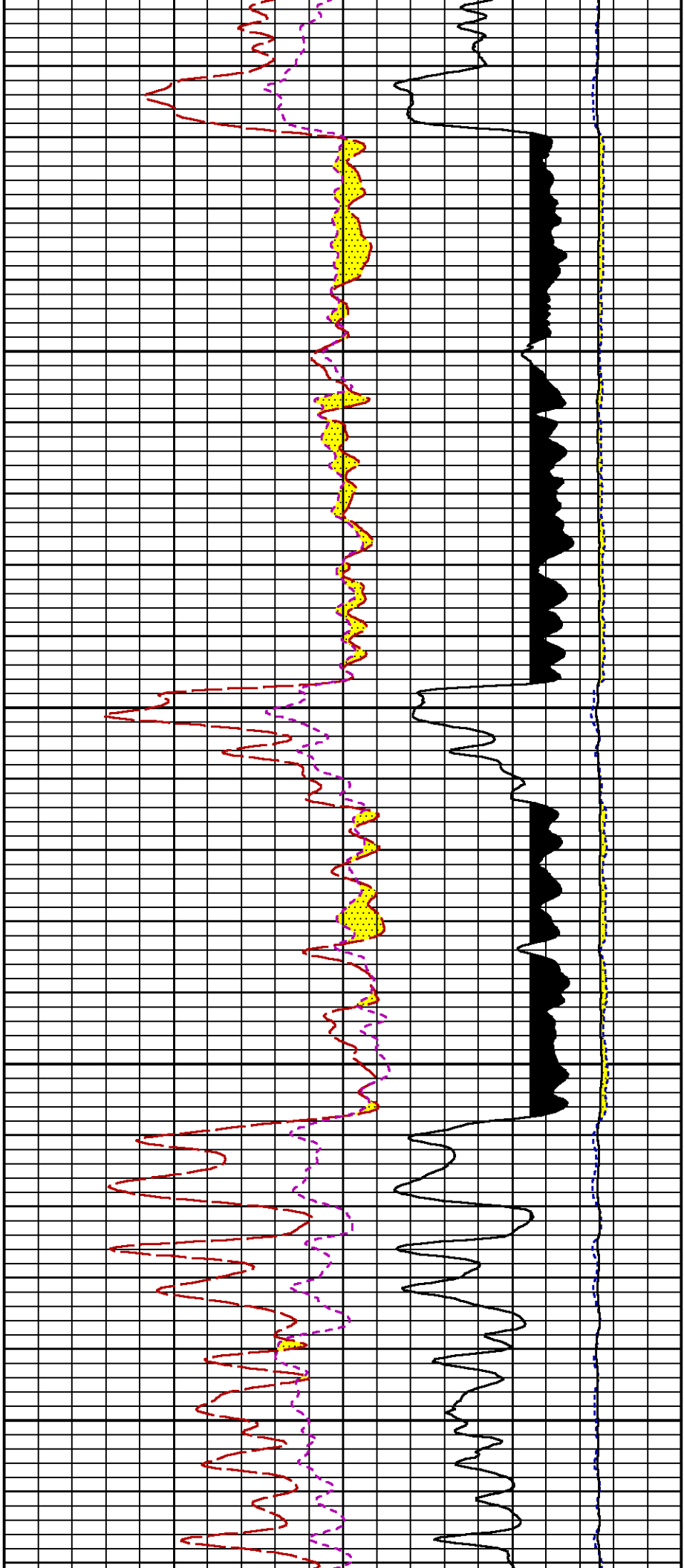
CURVE	OFFSET (ft)	CURVE	OFFSET (ft)	CURVE	OFFSET (ft)	CURVE	OFFSET (ft)
CCL	22.50	ISS	9.50	RATO	9.50	SGFC	9.50
GR	19.50	LS	9.50	RICS	9.50	SS	9.50

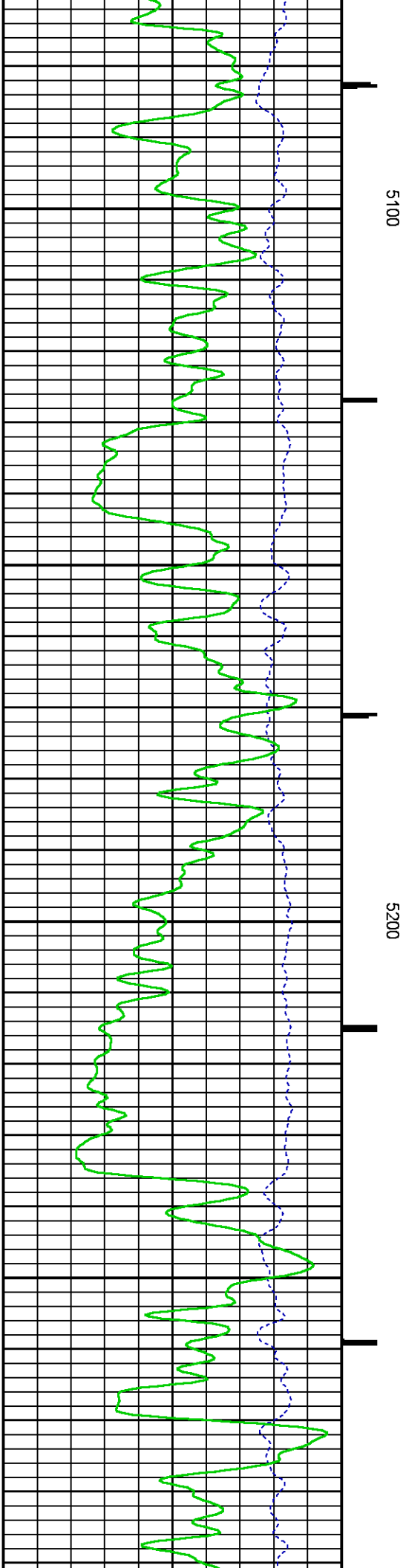
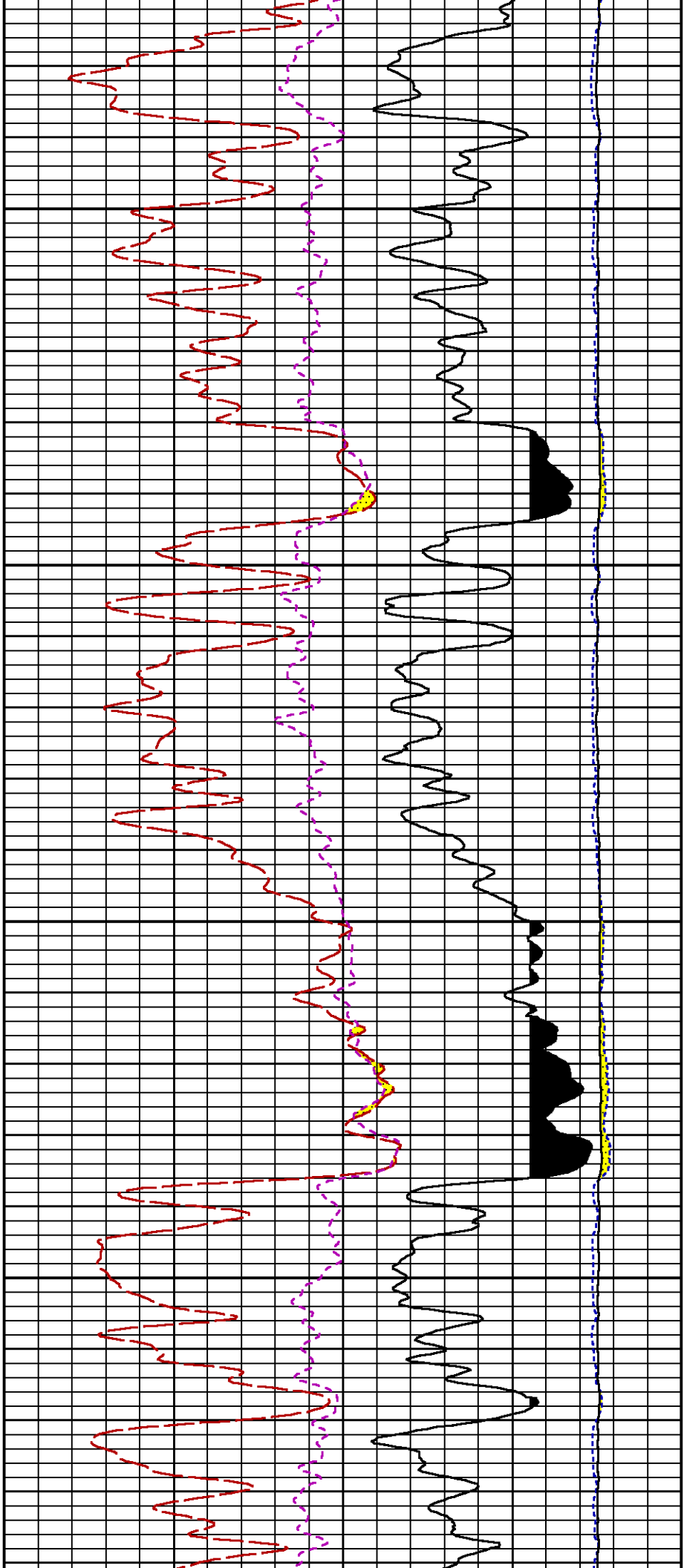
Presentation : HL6670:/dat1a/CH086322/RPM_MAIN_PRESENTATION.fvpdf [5"/100' Scale]
Plot Interval : 4510 - 8033 Feet

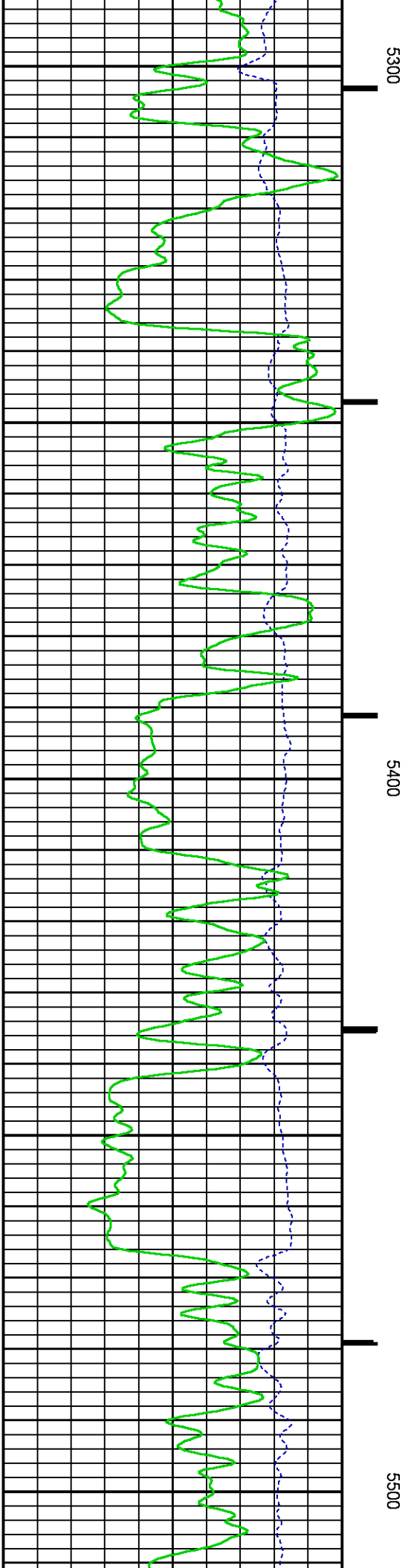
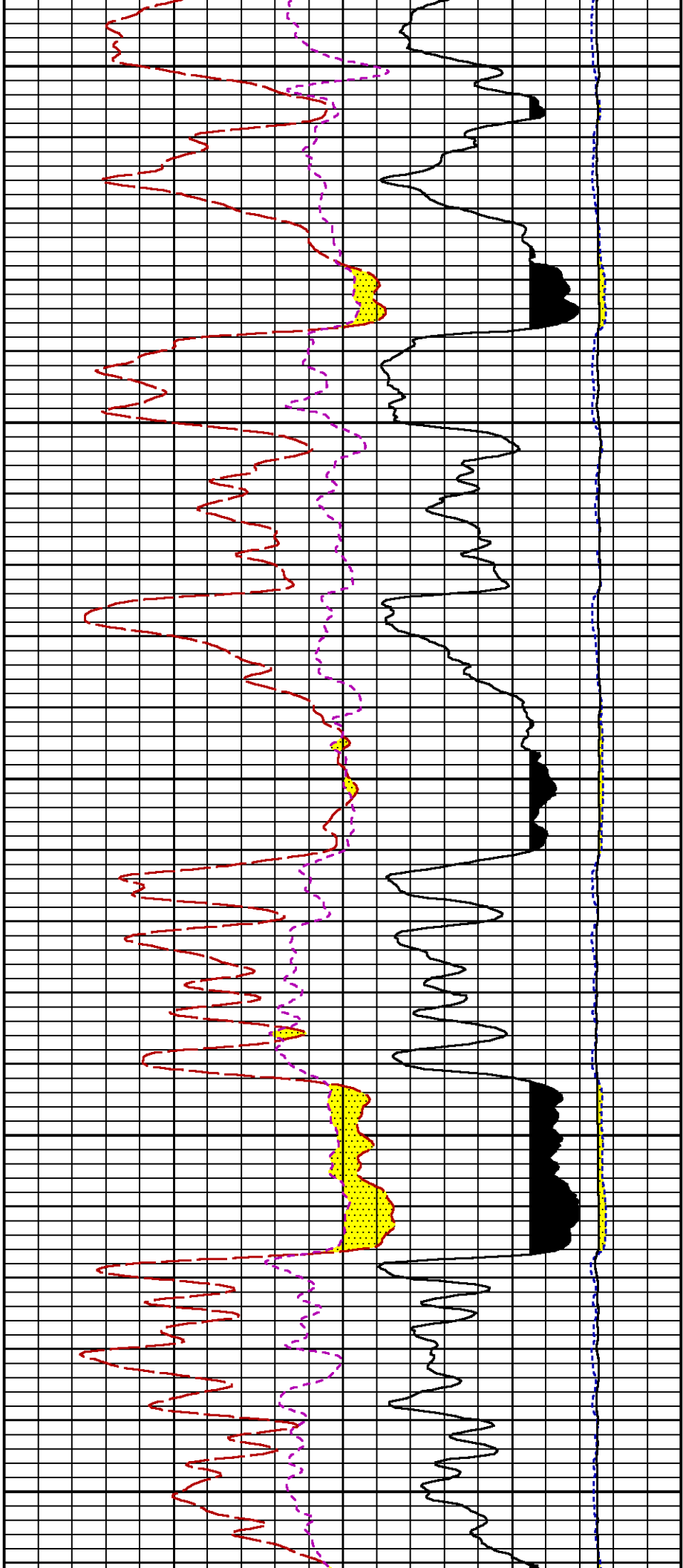
Data File 1 : F1 : HL6670:/dat1a/CH086322/RPM_MAIN_5_19.xtf
Created On : May 19 08:39:18 2014
Company : WPX ENERGY INC
Well : WPX ENERGY PA 444-3
Field : PARACHUTE
File Interval : 4470.5 - 8035.75 Feet
OCT : n353h

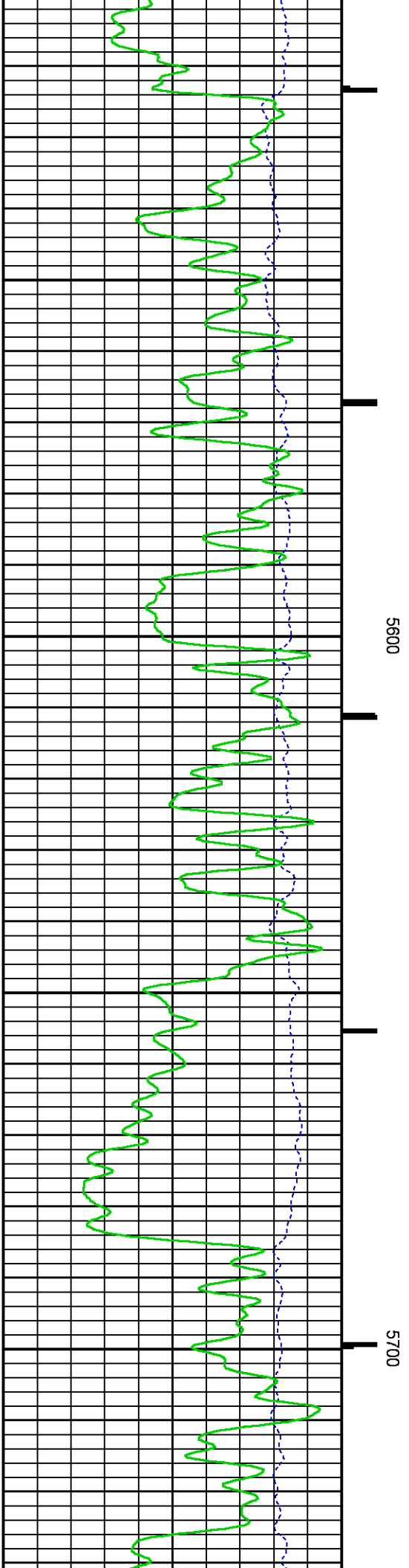
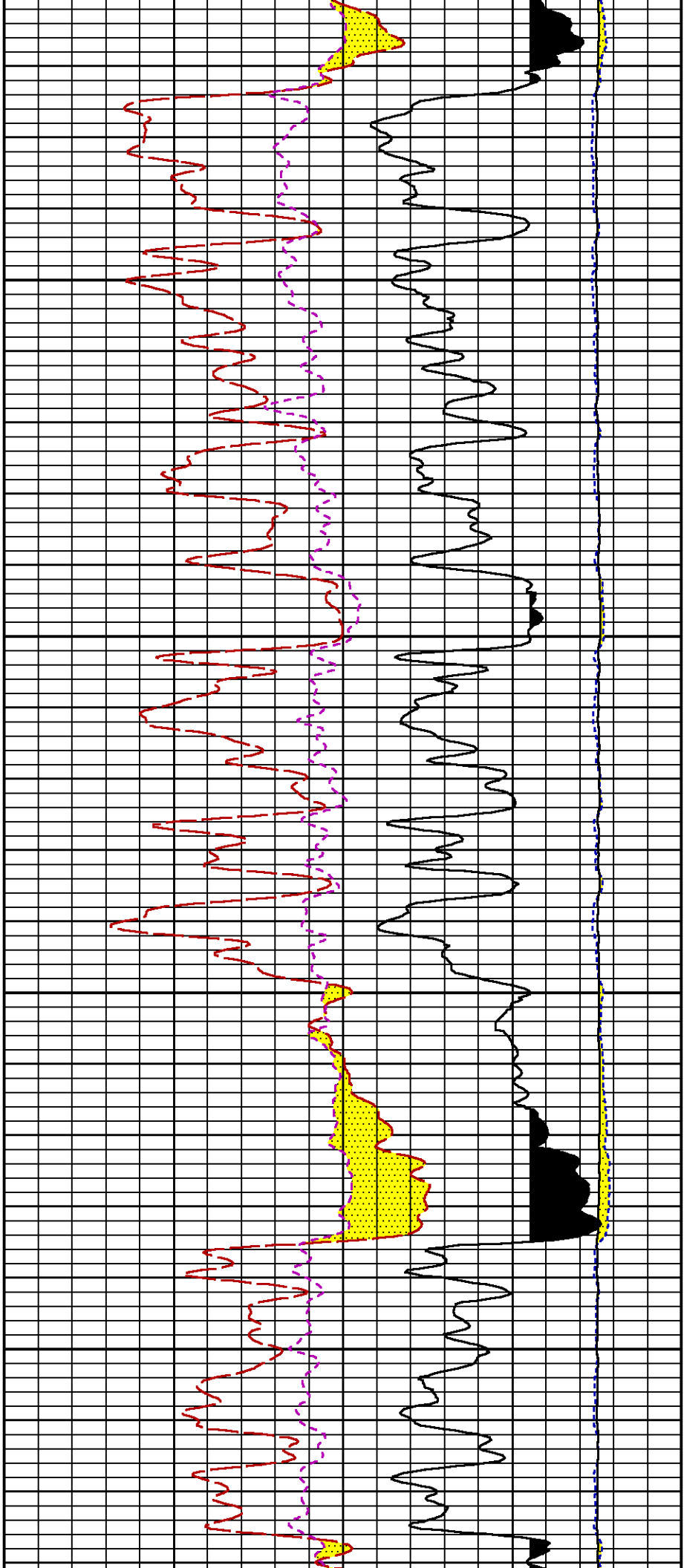


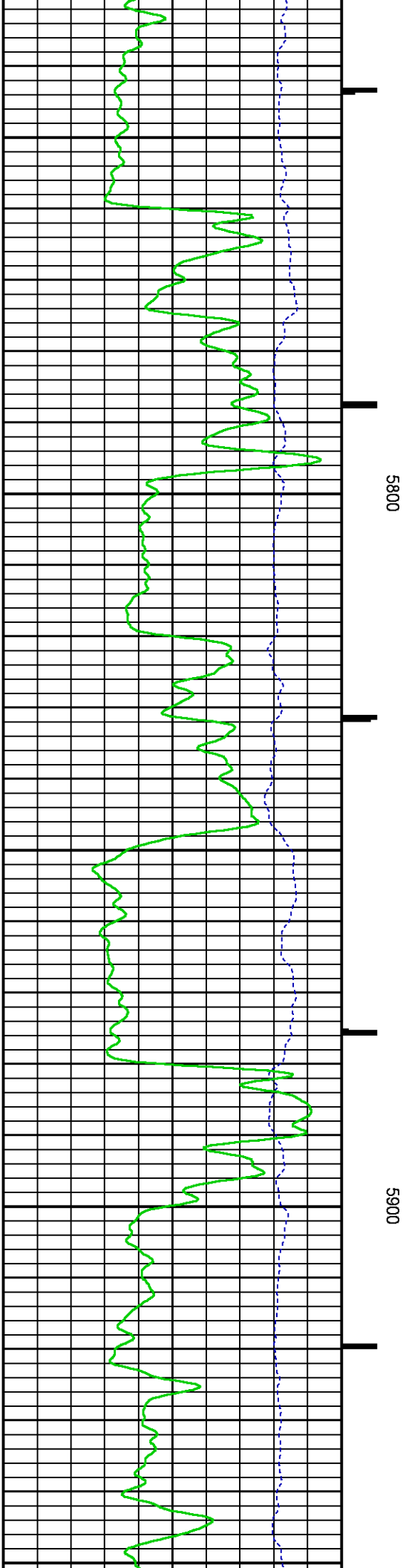
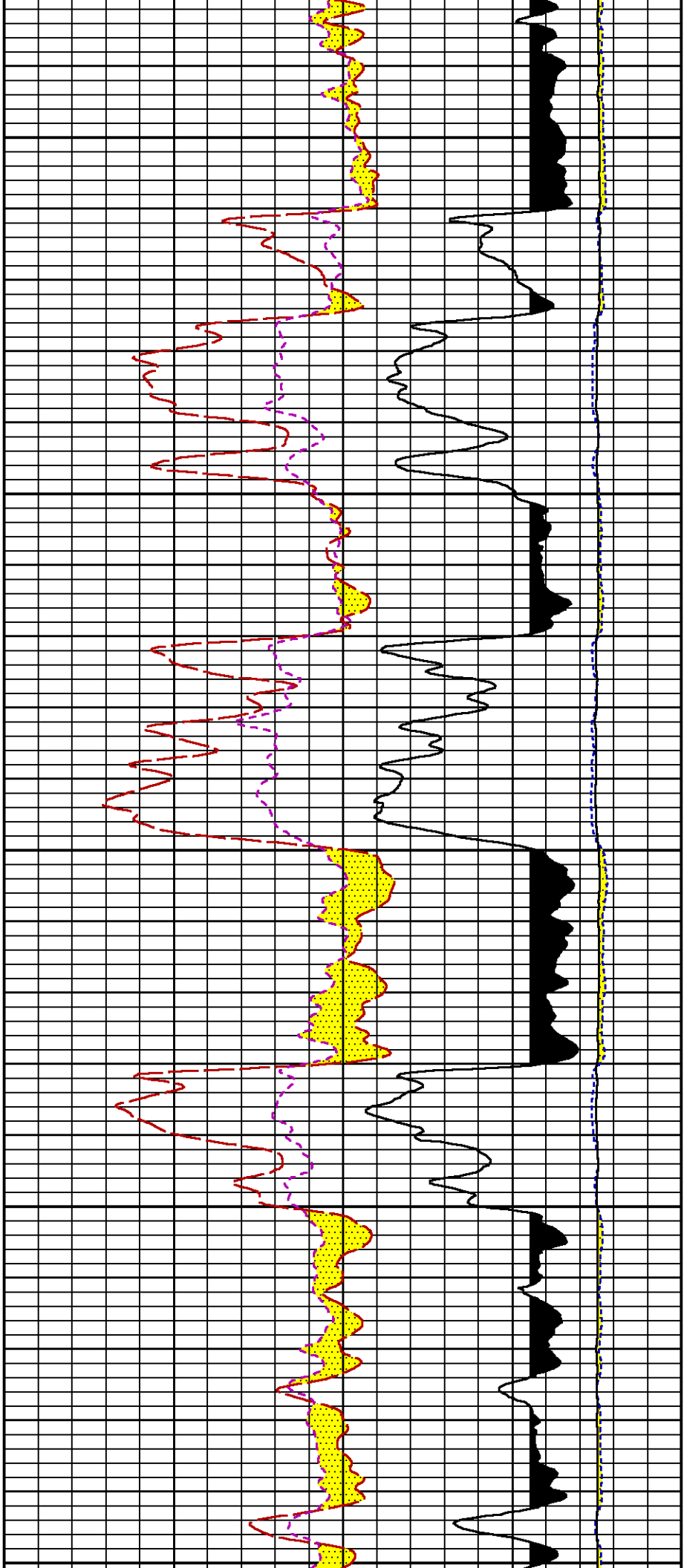


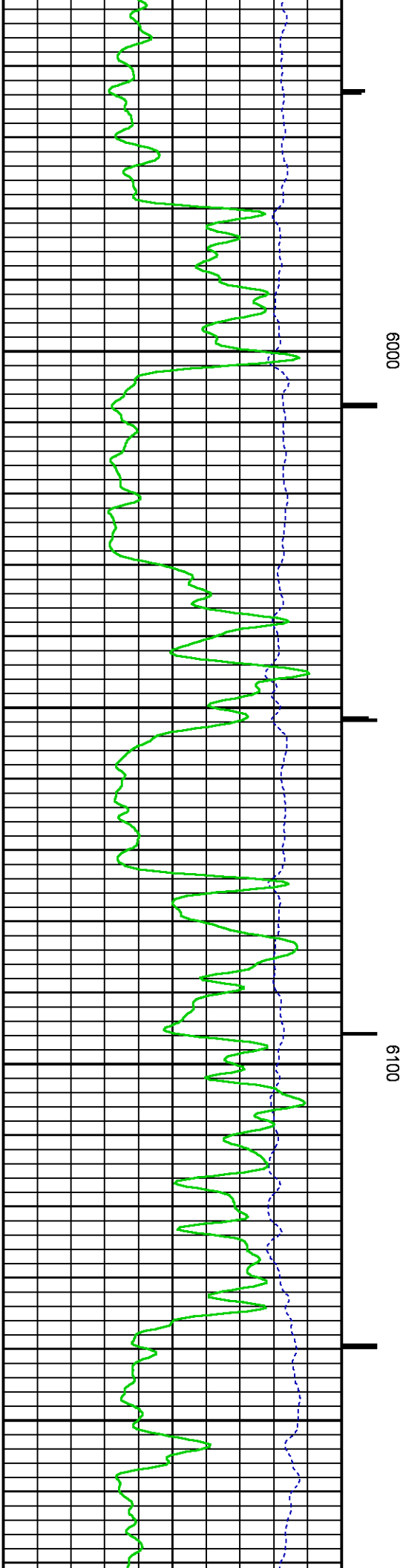
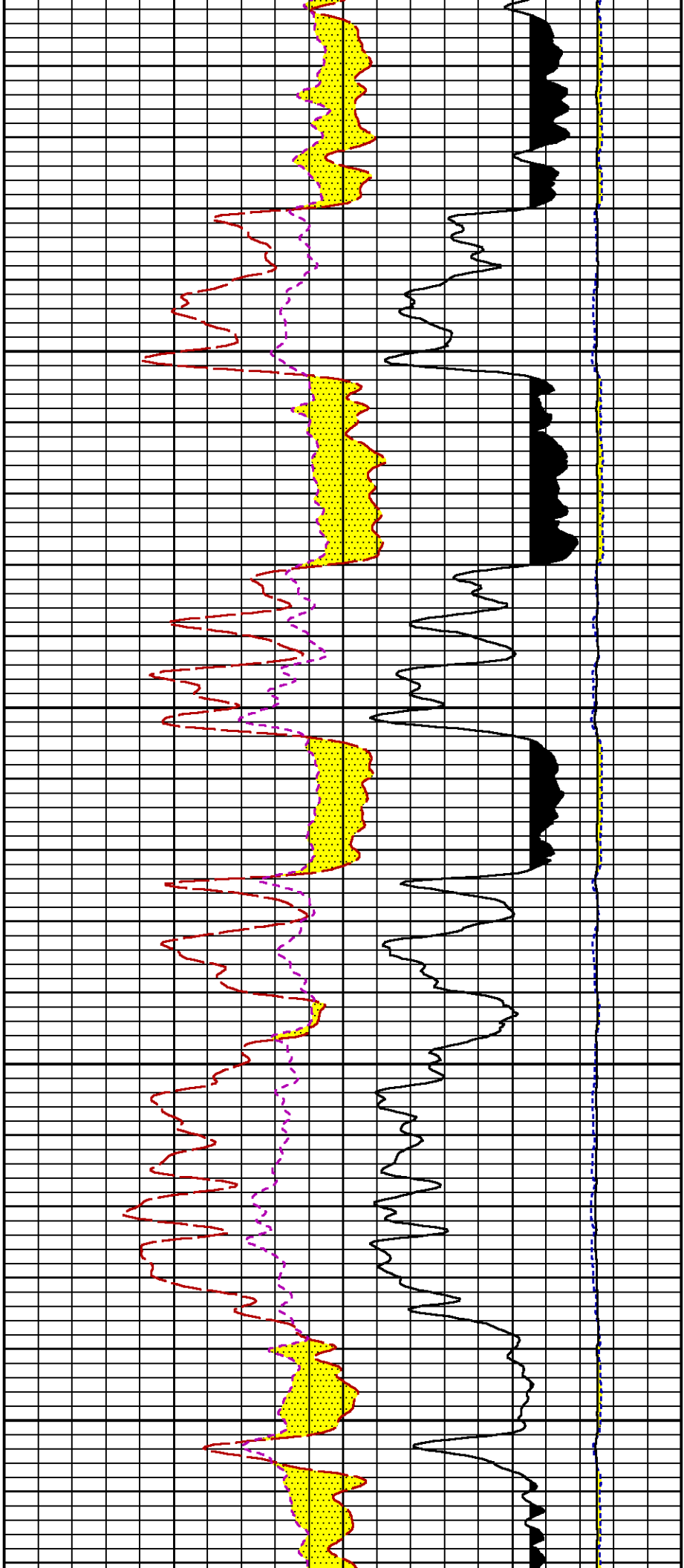


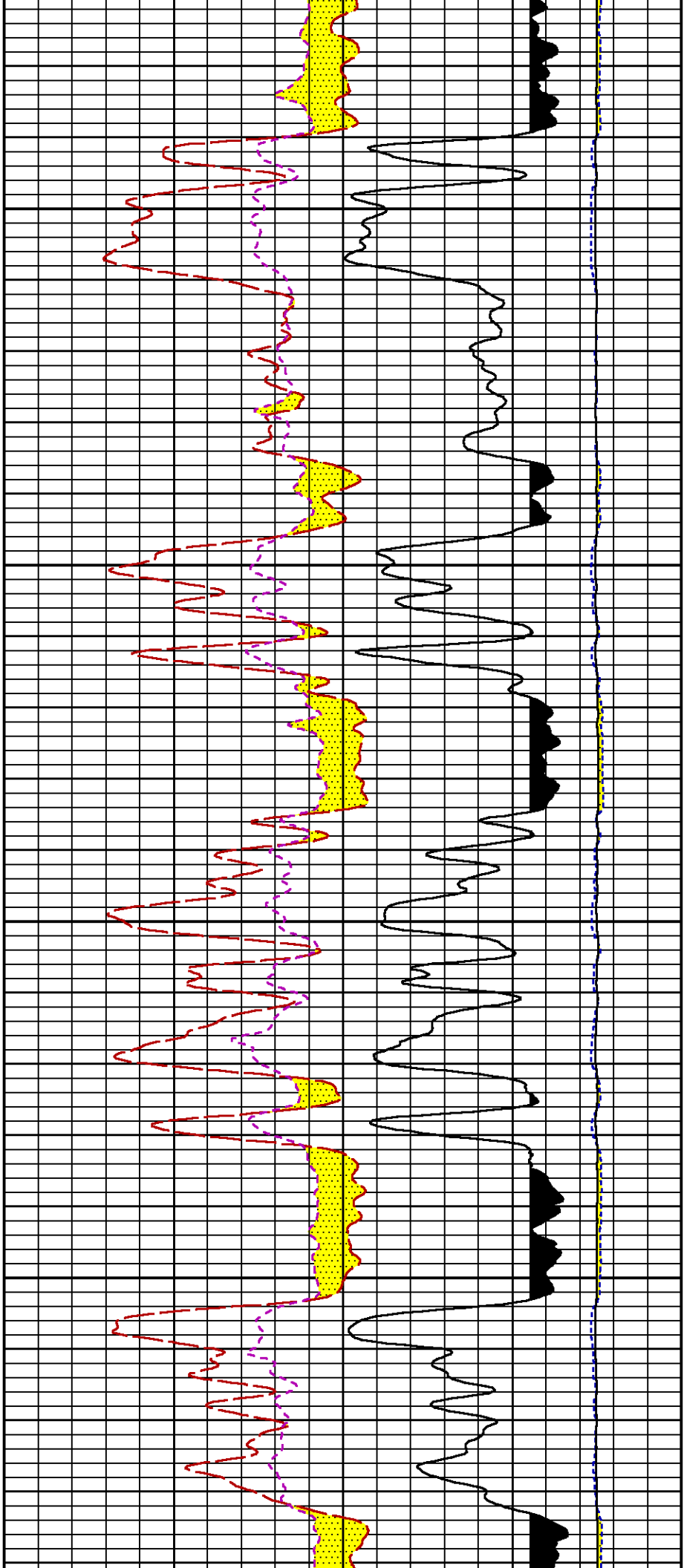






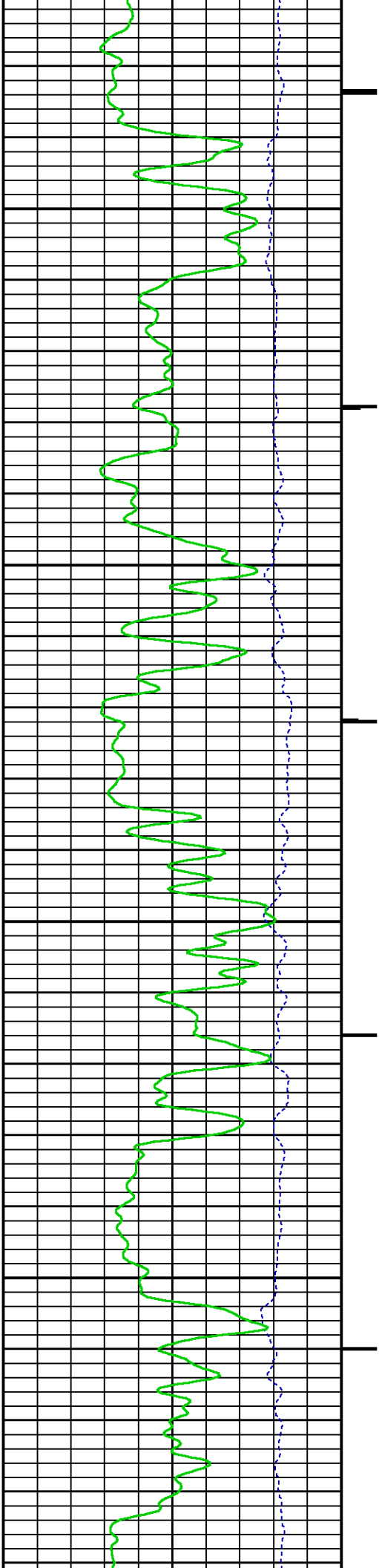


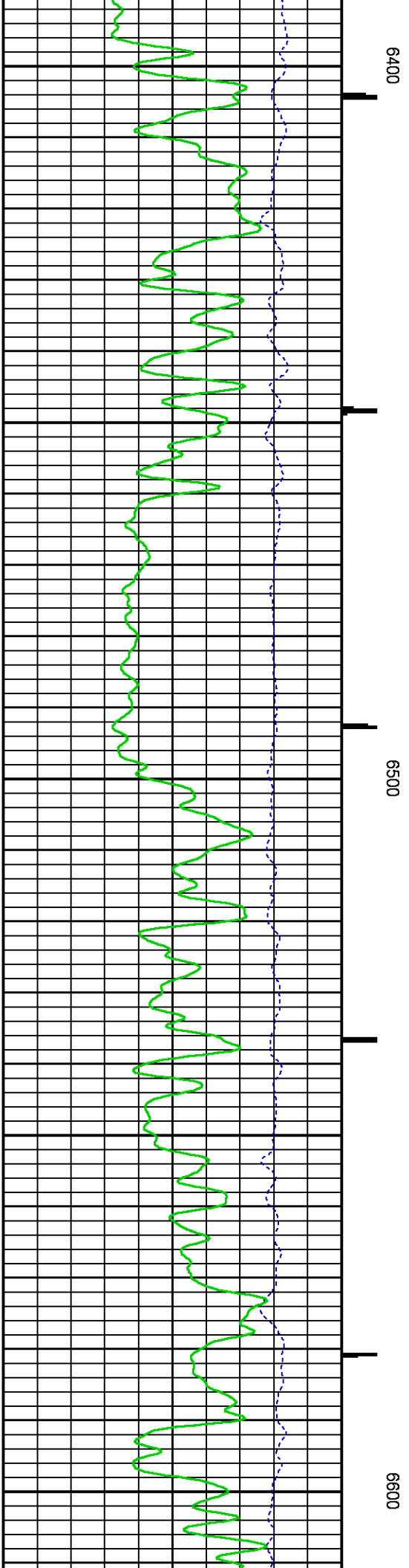
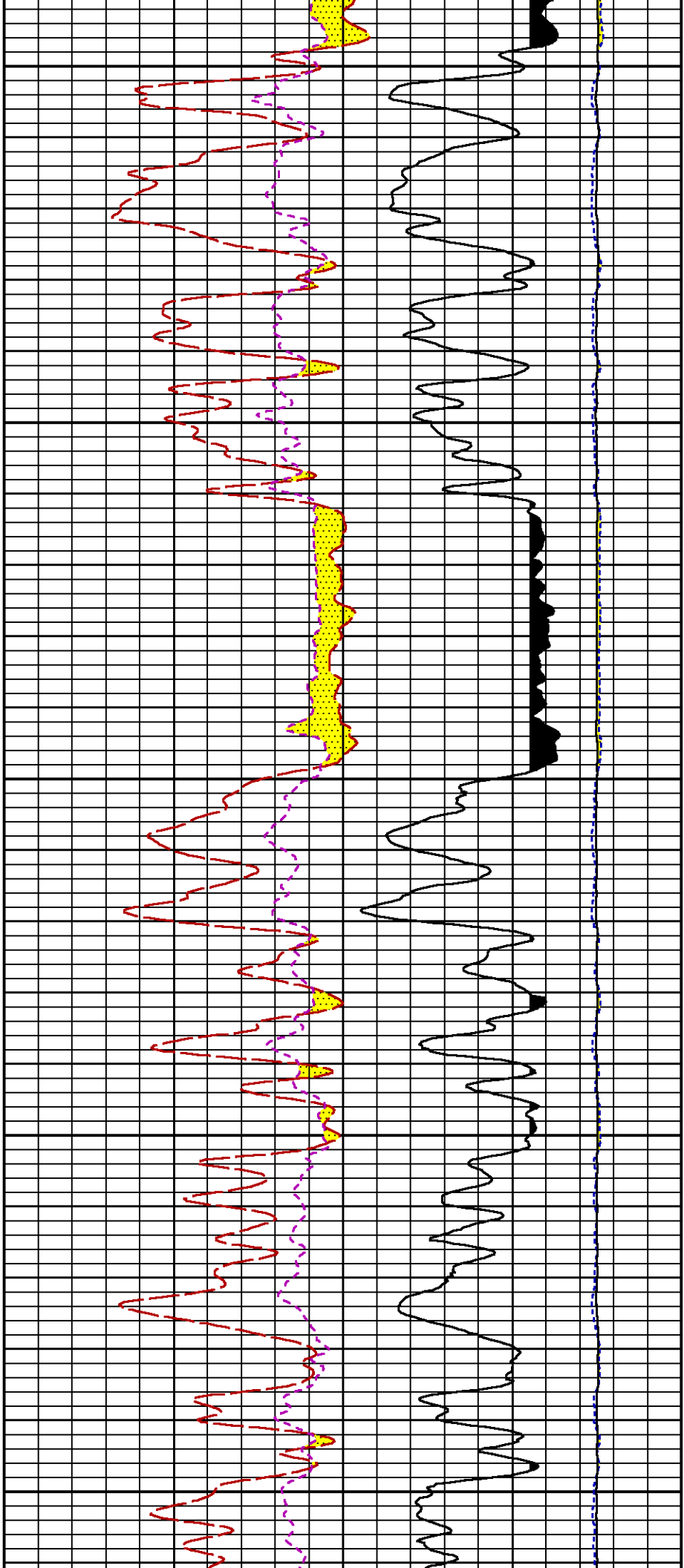


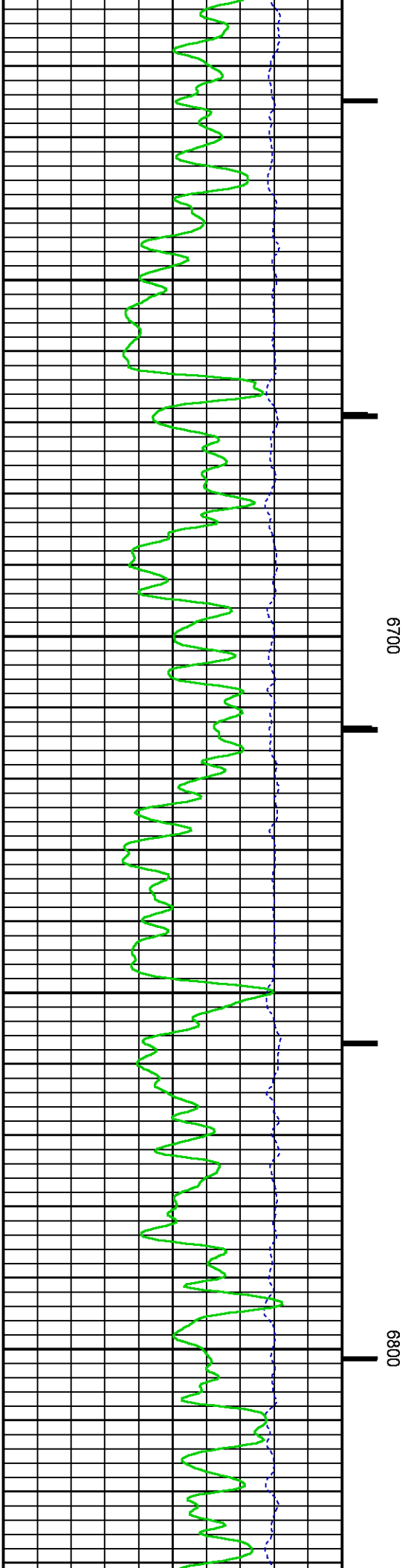
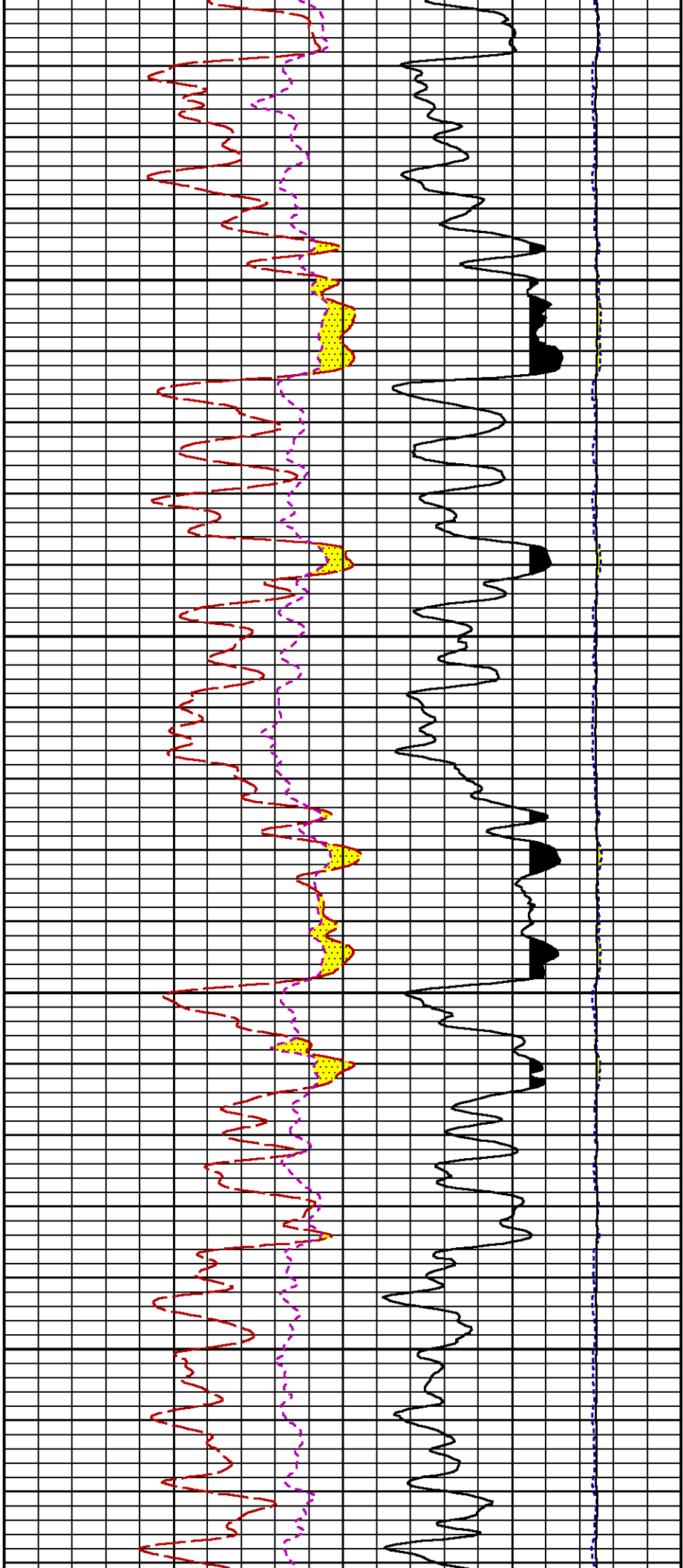


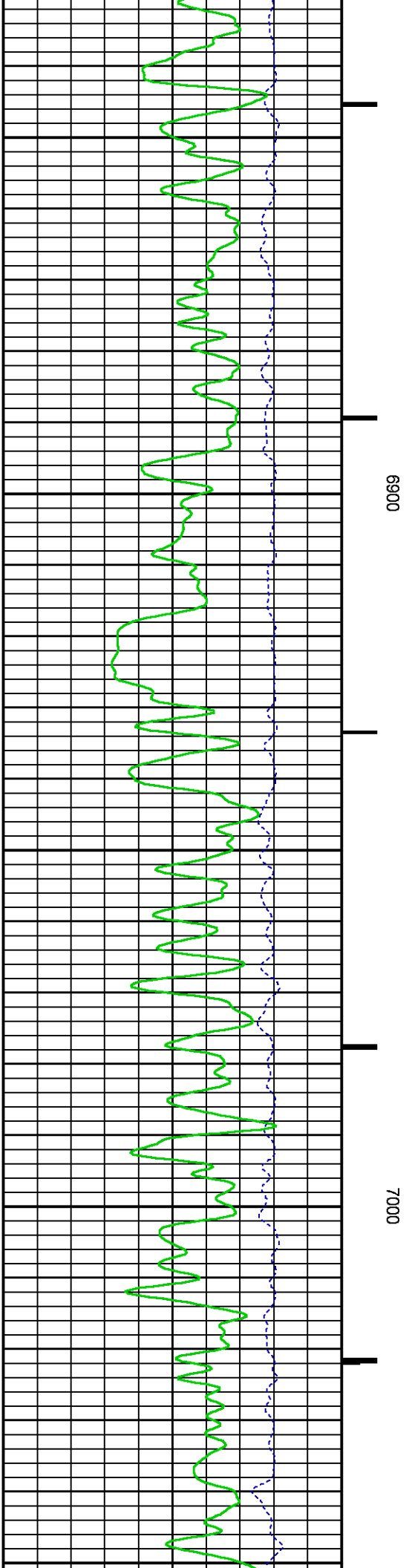
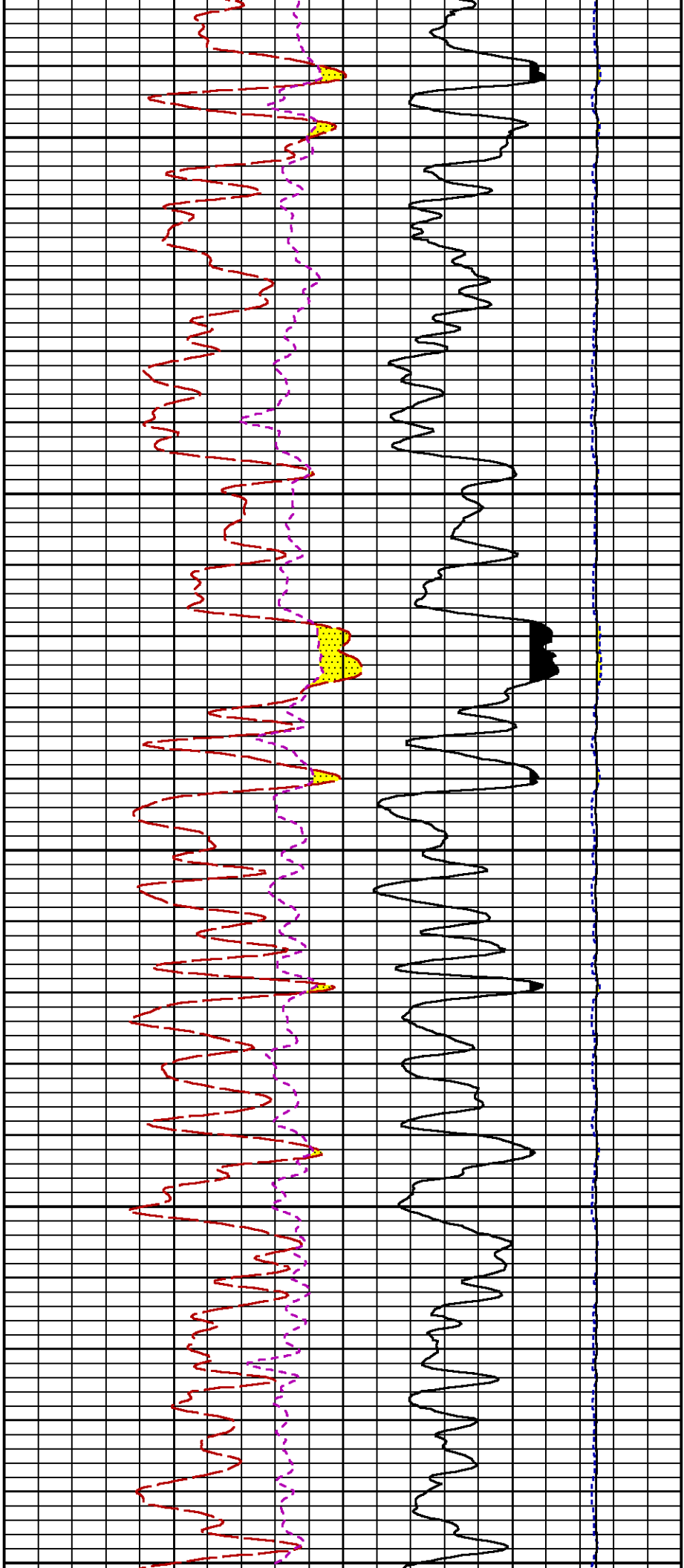
6200

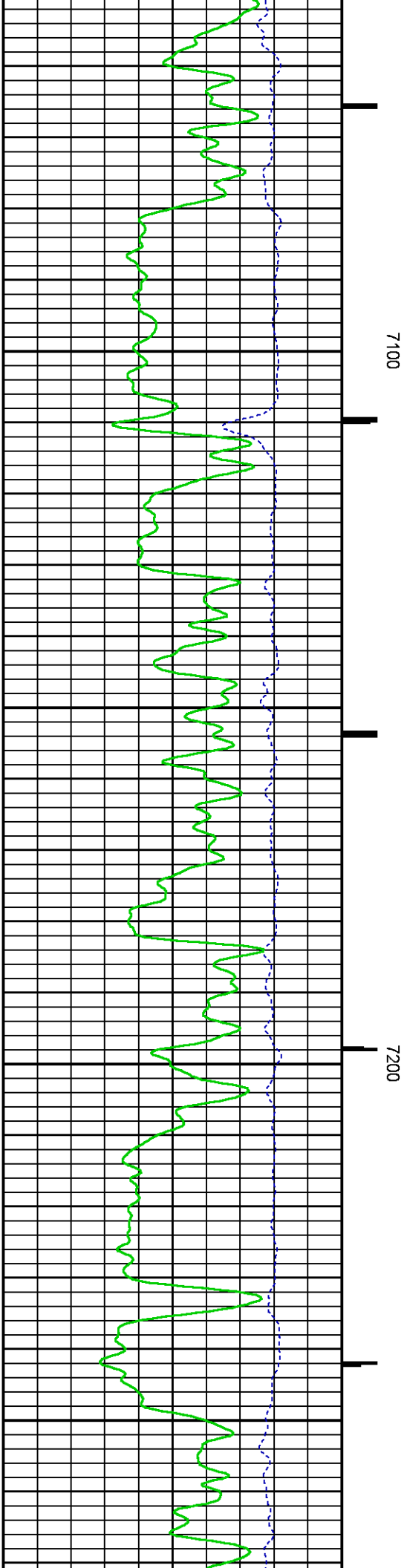
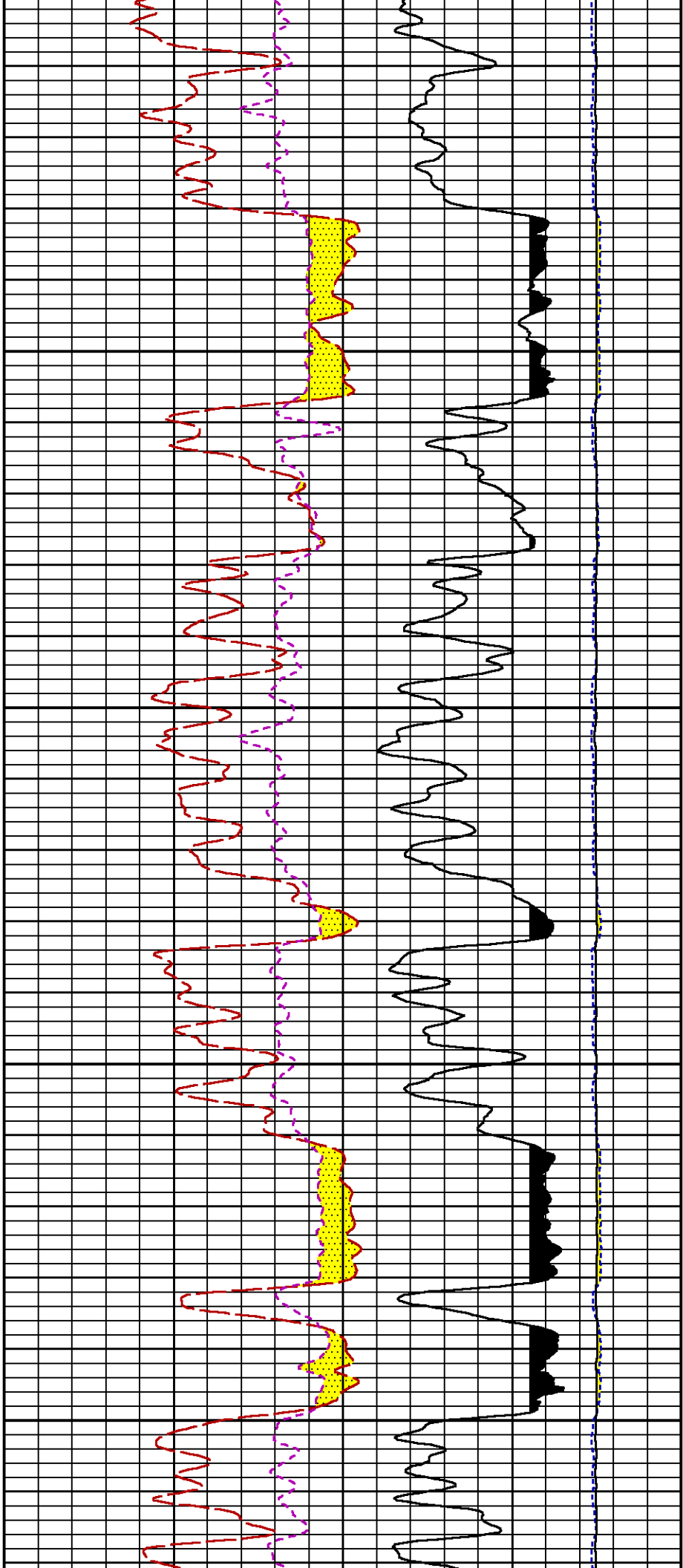
6300

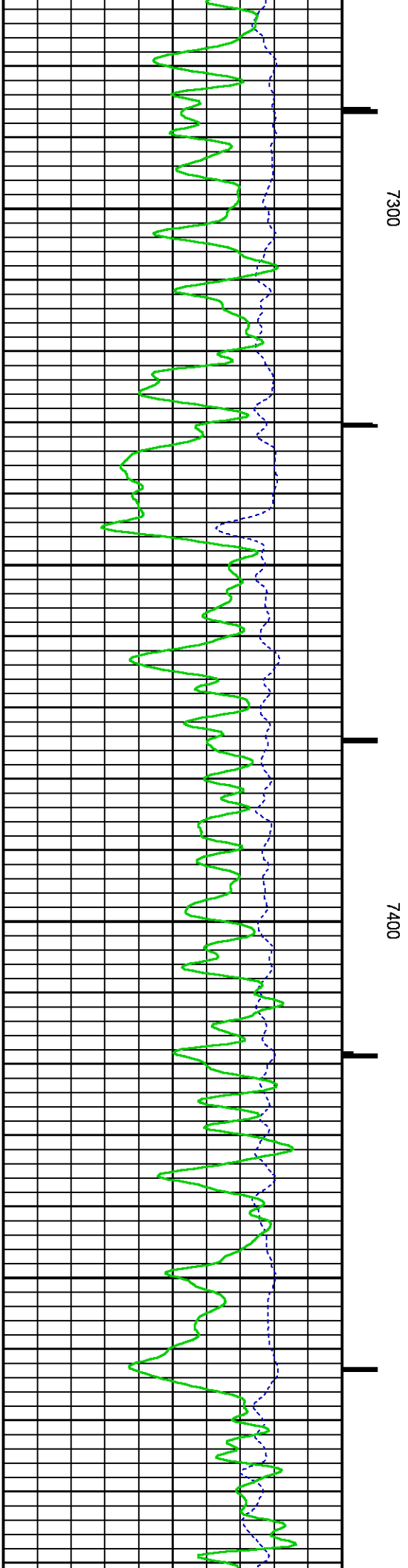
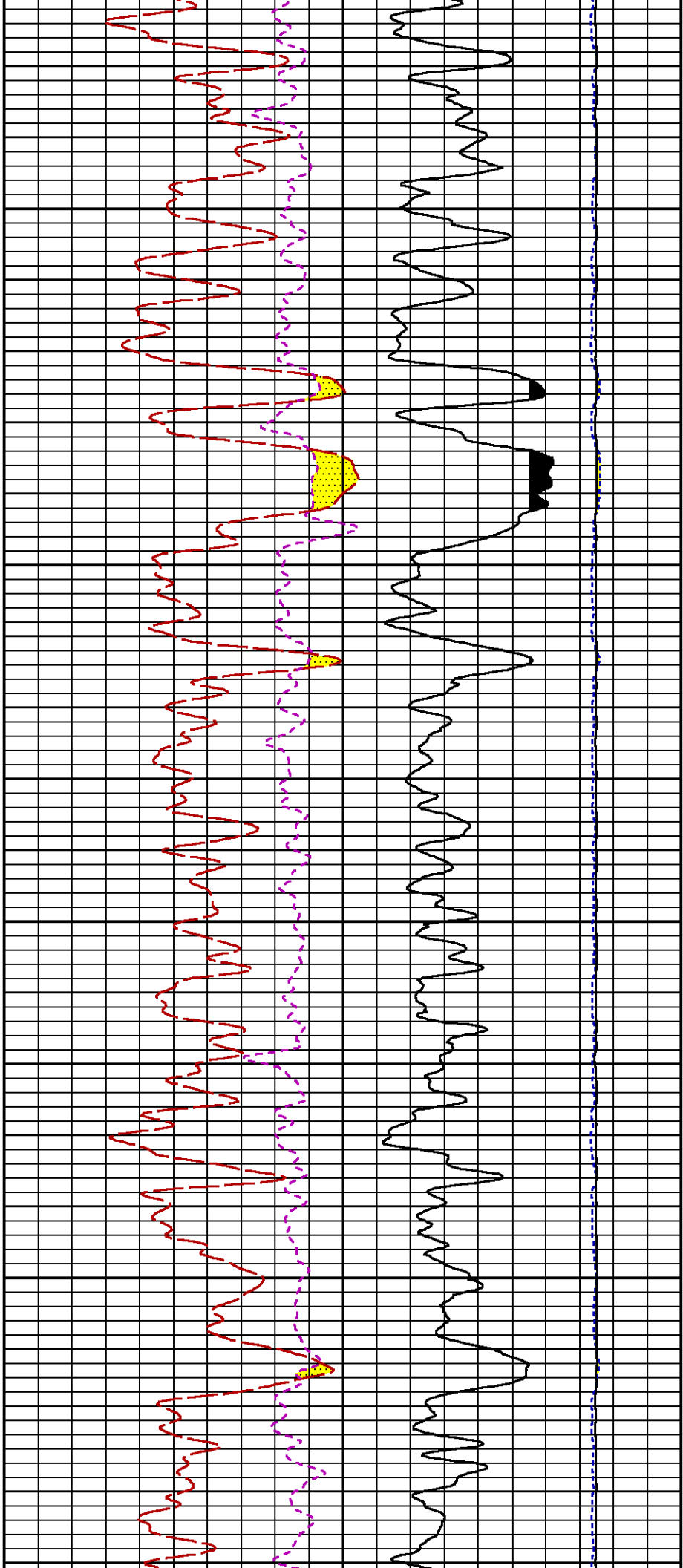


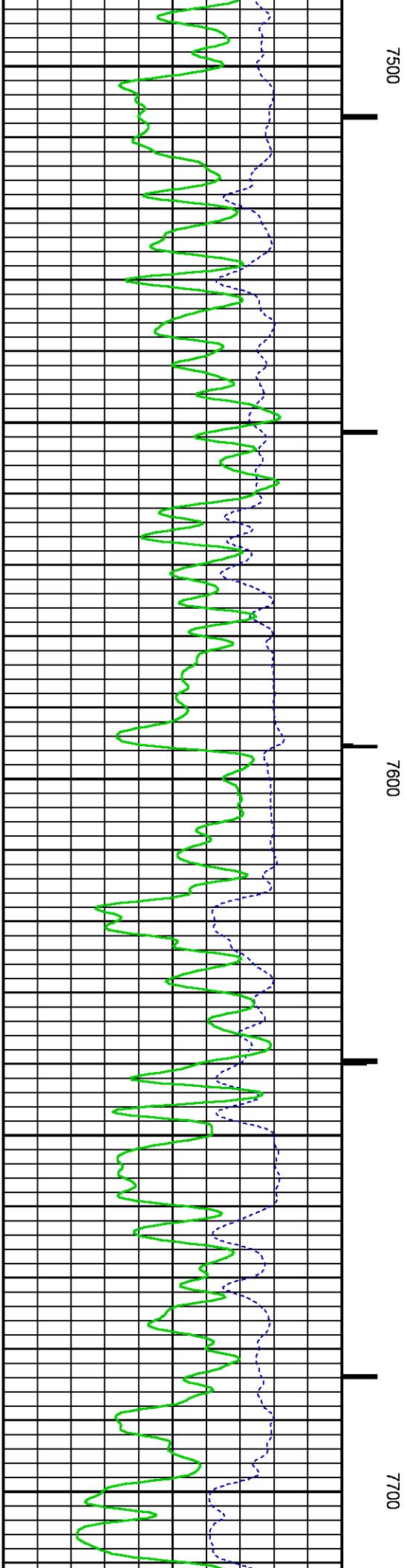
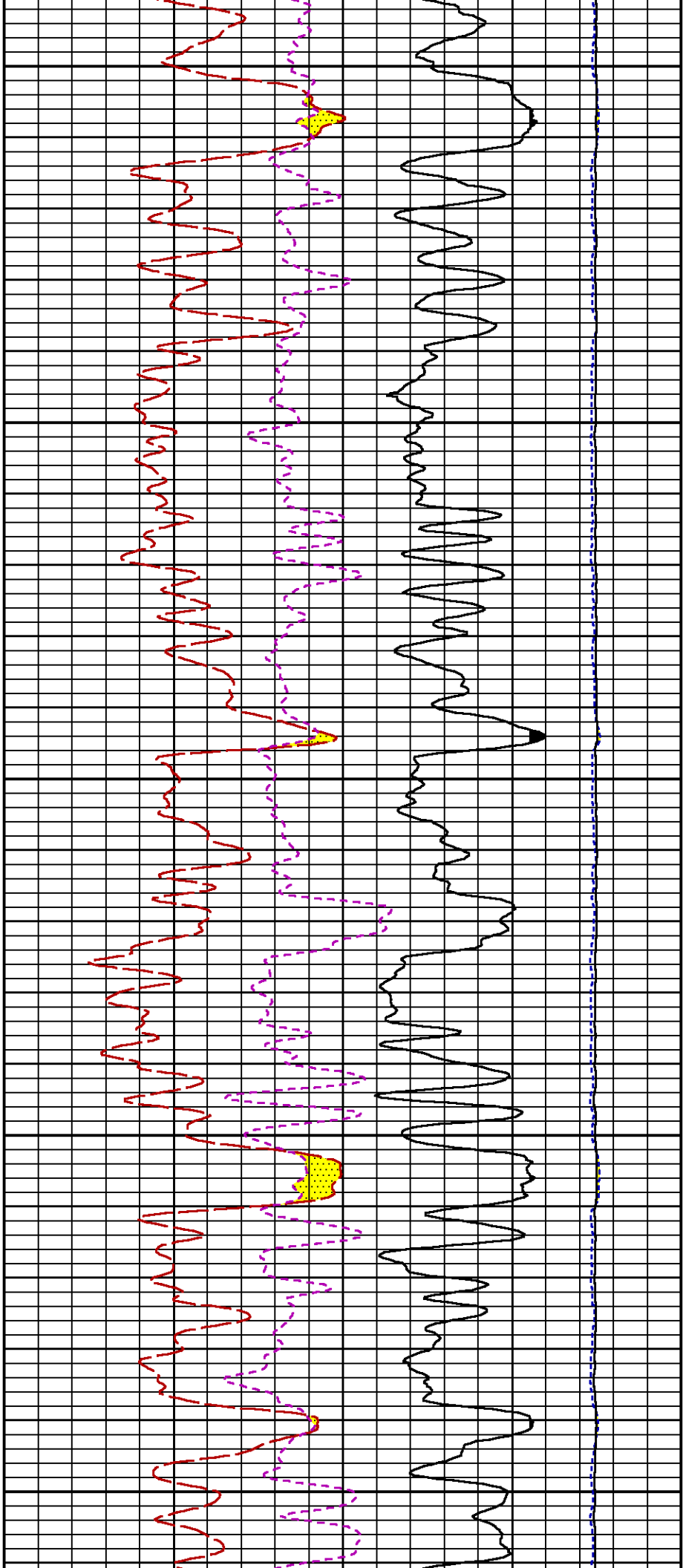


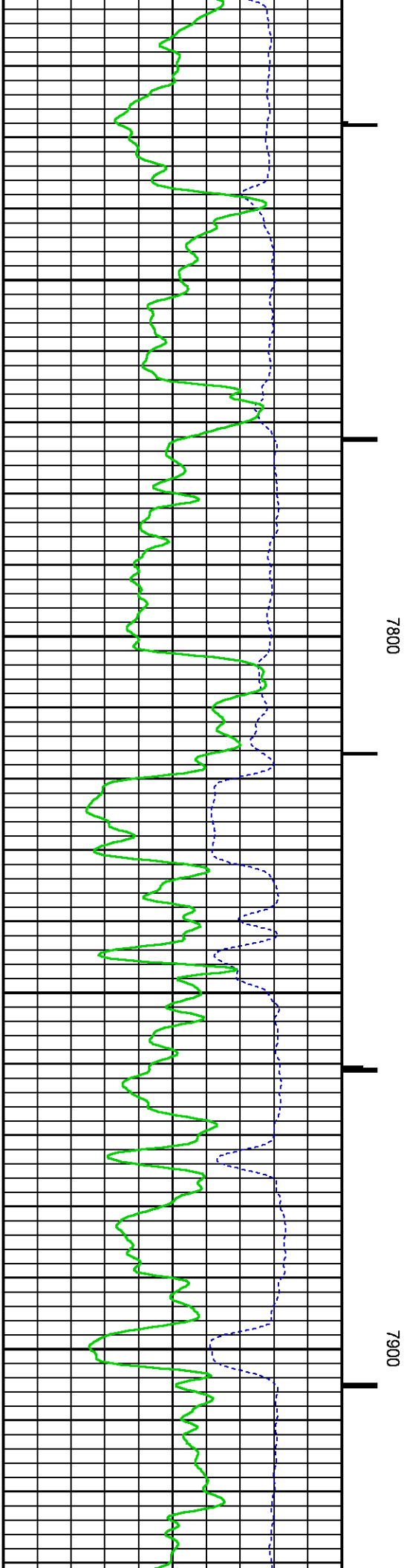
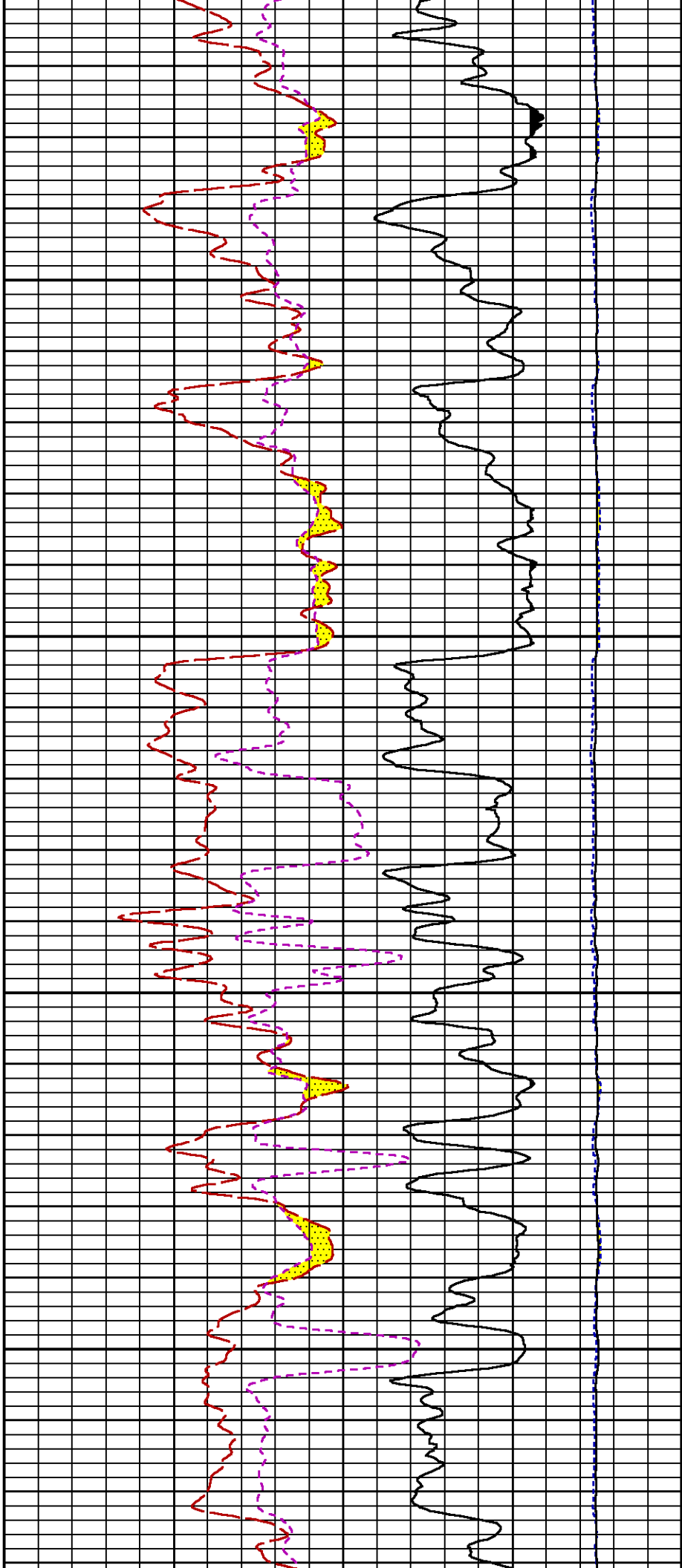


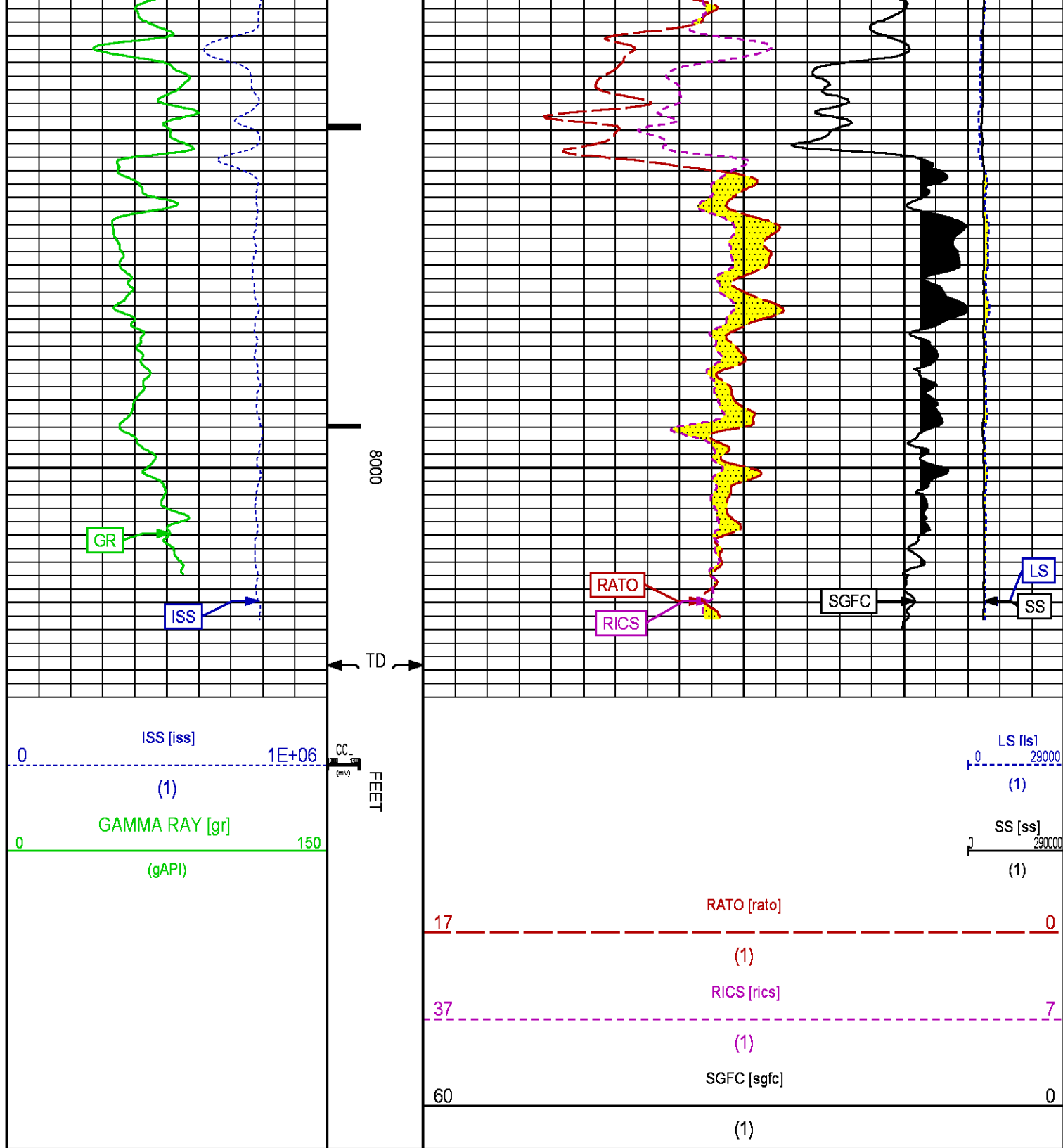












REPEAT SECTION PNC 3-D MODE

PARAMETER AND FILTER SUMMARY REPORT

FILE: /dat1a/CH086322/n353h01.prm
LOGGING MODE: DEPTH DIRECTION: UP
TOP DEPTH: 7042.500 ft BOTTOM DEPTH: 7441.000 ft

SYMMETRIC FILTER

MEASUREMENT TYPE	PARAMETER	VALUE	UNITS	INTERVAL (ft)
GR	FILTER ()	medium (1)		TOP BOTTOM

RPM PROCESSING

MEASUREMENT TYPE	PARAMETER	VALUE	UNITS	INTERVAL (ft)
PNC Parameters	BOREHOLE CONTENTS	FLUID		TOP BOTTOM
	OPEN/CASED HOLE	CASED HOLE		" "
	BOREHOLE SIZE	8.75	in	" "
	CASING SIZE	4.50	in	" "
	MATRIX	SANDSTONE		" "
	CORRECTION BUFFER	11		" "

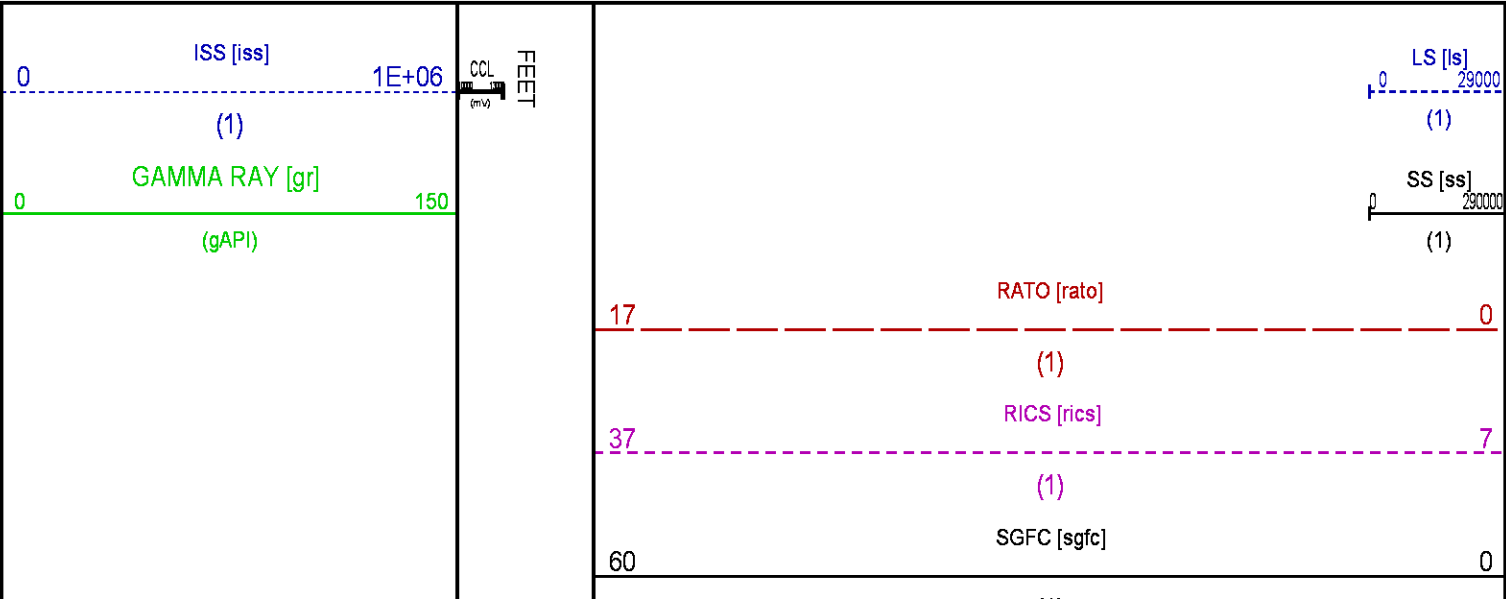
CURVE DESCRIPTION REPORT

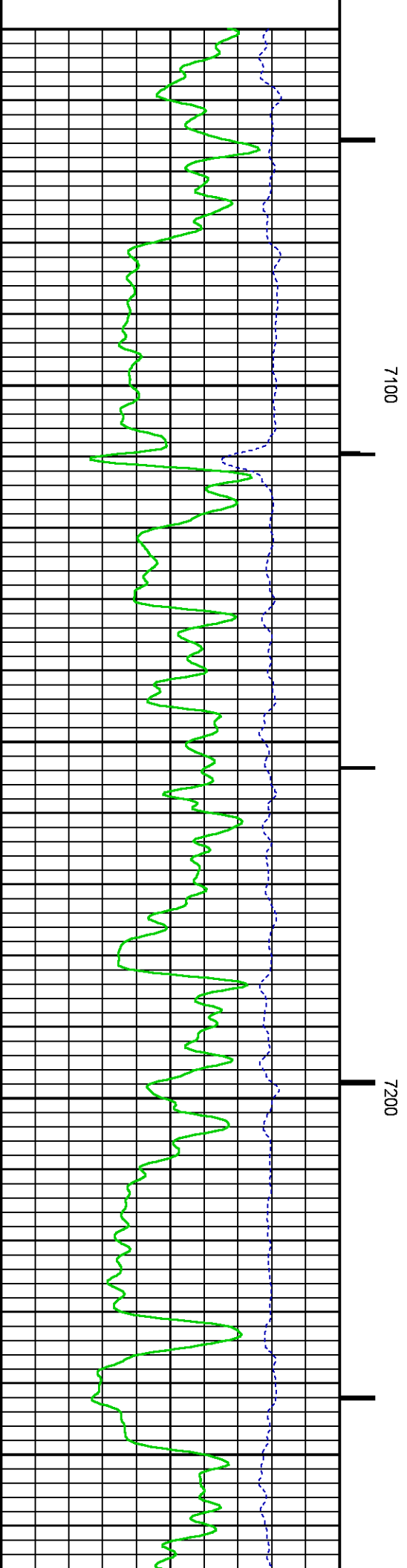
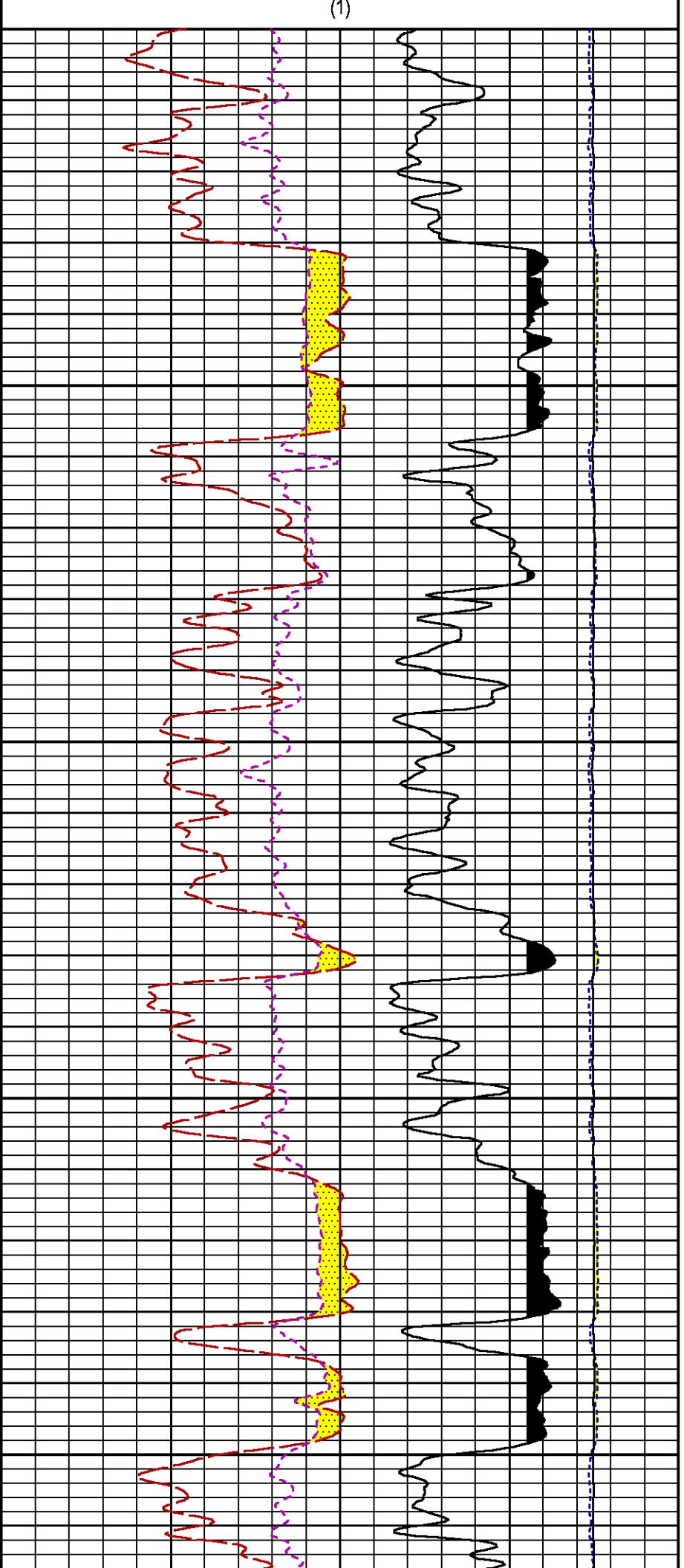
CURVE NAME	CREATION DATE	CURVE DESCRIPTION
F1:CCL	May 18 14:15:27 2014	CASING COLLAR LOCATOR
F1:GR	May 18 14:15:27 2014	GAMMA RAY
F1:ISS	May 18 14:15:27 2014	INELASTIC SHORT SPACE COUNT RATE
F1:LS	May 18 14:15:27 2014	LONG SPACE COUNT RATE
F1:RATO	May 18 14:15:27 2014	SHORT/LONG SPACE COUNT RATE RATIO
F1:RICS	May 18 14:15:27 2014	SHORT SPACE INELASTIC TO CAPTURE COUNT RATE RATIO (ISS/CSS)
F1:SGFC	May 18 14:15:27 2014	CORRECTED FORMATION SIGMA
F1:SS	May 18 14:15:27 2014	SHORT SPACE COUNT RATE

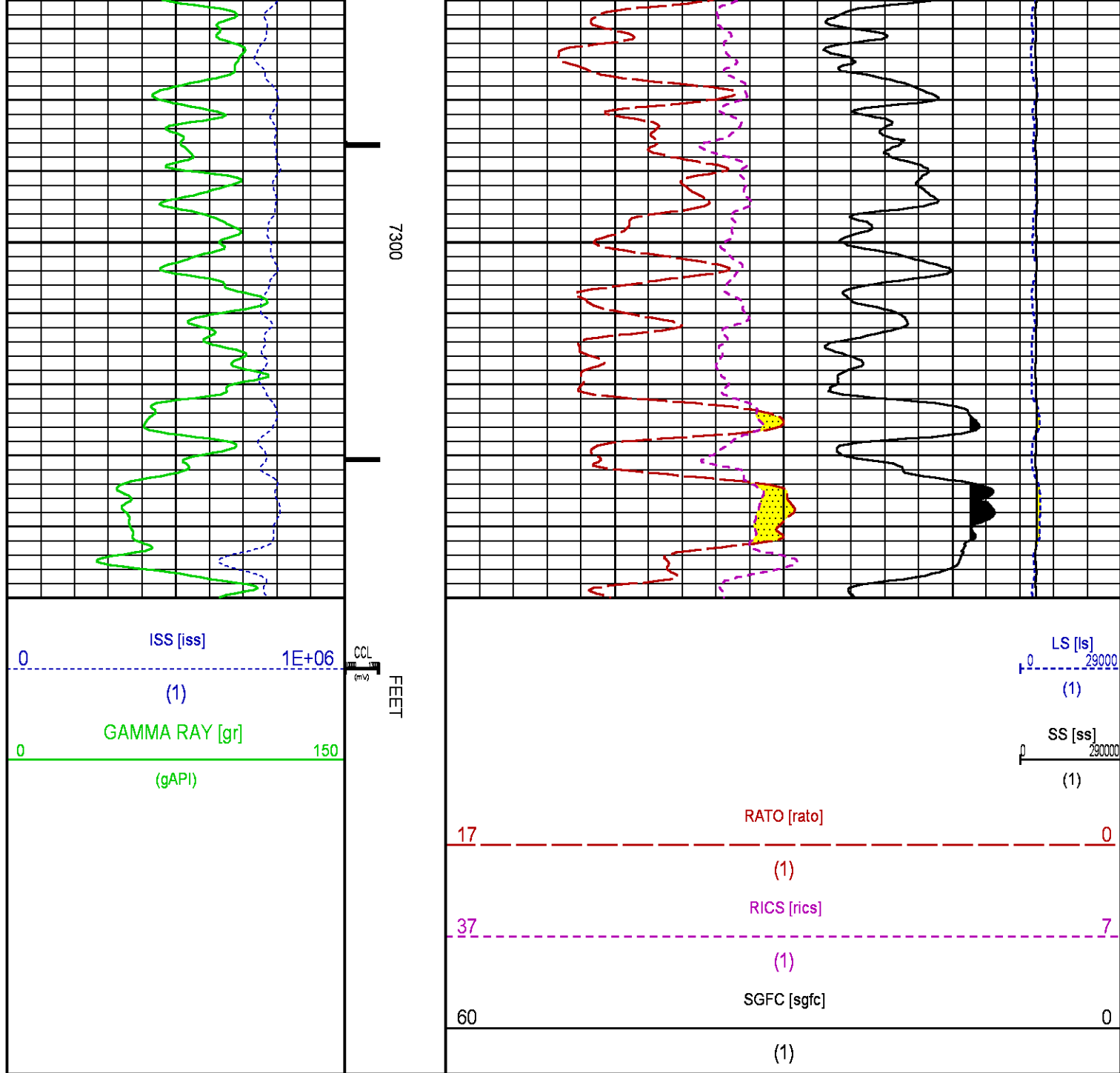
CURVE MEASURE POINT OFFSET

CURVE	OFFSET (ft)	CURVE	OFFSET (ft)	CURVE	OFFSET (ft)	CURVE	OFFSET (ft)
CCL	22.50	ISS	9.50	RATO	9.50	SGFC	9.50
GR	19.50	LS	9.50	RICS	9.50	SS	9.50

Presentation	: HL6670:/dat1a/CH086322/RPM_REPEAT_PRESENTATION.fvpdf [5"/100' Scale]
Plot Interval	: 7050 - 7350 Feet
Data File 1	: F1 : HL6670:/dat1a/CH086322/n353h01_REPEAT_RPM.xtf
Created On	: May 18 14:15:27 2014
Company	: WPX ENERGY INC
Well	: WPX ENERGY PA 444-3
Field	: PARACHUTE
File Interval	: 7018.5 - 7439.25 Feet
OCT	: n353h







CALIBRATION / VERIFICATION SUMMARY

Source File: /dat1a/CH086322/RPM.tp1

GR PRIMARY CALIBRATION SUMMARY

TOOL #:		8262XA 10317216		DATE/TIME PERFORMED:		Tue May 6 11:23:07 2014	
UNIT #:		3880TA HL6670		CALB JIG #:		4702NK VBA-905	
	BACKGROUND	CALBRTR ON	CR DIFF	MULT	BACKGROUND	CALBRTR ON	CALBRTR
	(cts/s)	(cts/s)	(cts/s)		(gAPI)	(gAPI)	(gAPI)
GR	98.04	440.29	342.2	0.541	53.00	238.00	185

GR PRIMARY VERIFICATION SUMMARY

TOOL #:	8262XA 10317216	DATE/TIME PERFORMED:	Tue May 6 11:27:45 2014
---------	-----------------	----------------------	-------------------------

UNIT #: 3880TA HL6670

VERI JIG #: 4702NK VBA-905

GR	BACKGROUND CALBRTR ON		MULT	BACKGROUND CALBRTR ON		DIFF.
	(cts/s)	(cts/s)		(gAPI)	(gAPI)	(gAPI)
	97.16	432.07	0.541	52.52	233.55	181.04
						175.00 195.00

RPM_PNC_3D PRIMARY CALIBRATION SUMMARY

TOOL: 8283PA 10466231

DATE/TIME PERFORMED: Tue May 13 12:59:39 2014

UNIT: 3880TA HL6670

CALIBRATOR: 2437XB 112674

SOURCE: 8281AA 11724361

HOURS: 8281AA 129

	ISS	Mtr Vltz (V)	SS Gain	LS Gain	XLS Gain	EA Temp (degF)	Sync Delay (usec)	RCAL
Raw Data	812300	121	2261	2282	2276	126	7	0.9741
Interpolated	1300000	144	2242	2276	2274			

	ISS	BKS	BKL	BKX	SGA1	SDA1	SGA2	SDA2
Raw Data	812300	7319	1132	152	26.17	0.14	24.21	0.31
					26.35 26.40	0.00 0.20	23.80 24.80	0.00 0.40

	ISS	ILS	IXS	SS	SS2	LS	CSS	CLS
Raw Data	812300	175079	27254	94990	33788	8764	57492	14038
Fit Quality %		1.514	1.530	1.479	1.439	1.666	1.344	1.597

	ISS	RBOR	RIN ISS/LS	RIN13 ISS/XS	RICS ISS/CSS	RATO SS/LS	RTWO SS2/LS	RONE CSS/CLS
Raw Data	812300	1.43	4.64	29.82	14.13	10.84	3.86	4.10
		1.42 1.45	3.65 5.62	22.20 32.70	10.09 16.34	10.06 11.10	3.57 3.95	3.76 4.22
Fit Quality %		0.069	0.171	0.157	0.149	0.170	0.180	0.125
Reduced	1393172	1.43	4.66	29.95	14.19	10.86	3.86	4.10
		1.42 1.45	4.33 5.62	27.60 32.70	13.70 16.34	10.06 11.10	3.57 3.95	3.76 4.22

INSTRUMENT CONFIGURATION

Source File: /dat1a/CH086322/WPX_RPM-tdg

A3 CABLEHEAD

Diameter : 1.37"

PCM POWER SUPPLY

Diameter : 1.70"
Length : 3.86'
Weight : 18 lbs
Series : 8250EA
Mnemonic : PCM

TELEMETRY / CCL

Diameter : 1.70"
Length : 4.46'
Weight : 20 lbs
Series : 8248ED
Mnemonic : PCM
Measure Point: 1.00': CCL MP

34.08'

CCL MP

26.03'

GAMMA RAY

Diameter : 1.70"
Length : 3.02'
Weight : 15 lbs
Series : 8262XA
Mnemonic : GR
Measure Point: 0.89': GR MP

GR MP 22.90'

RPM ELECTRONICS

Diameter : 1.70"
Length : 4.48'
Weight : 16 lbs
Series : 8281EA
Mnemonic : RPM

RPM C DETECTOR SECTION

Diameter : 1.70"
Length : 9.40'
Weight : 41 lbs
Series : 8283PA
Mnemonic : RPM
Measure Point: 5.45': XLS DETECTOR
Measure Point: 5.04': LS DETECTOR
Measure Point: 4.79': SS DETECTOR

XLS DETECTOR 13.58'
LS DETECTOR 13.16'
SS DETECTOR 12.91'

RPM SOURCE SECTION

Diameter : 1.70"
Length : 4.70'
Weight : 18 lbs
Series : 8281FA
Mnemonic : RPM

TEMPERATURE / PRESSURE

Diameter : 1.70"
Length : 3.30'
Weight : 13 lbs
Series : 8255XA
Mnemonic : SRPL
Measure Point: 1.52': TEMP MP

TEMP MP 1.65'
PRES MP

BULL PLUG 1 11/16

0.00'

TOTAL LENGTH: 34.08'
TOTAL WEIGHT: 144 lbs
MAX DIAMETER: 0'1.70"



COMPANY	WPX ENERGY INC		FILE NO:
WELL	WPX ENERGY PA 444-3		USCH086322
FIELD	PARACHUTE		API NO:
COUNTY	GARFIELD	STATE CO	05045221510000
LOCATION:		ELEVATIONS:	S3 T7S R95W PAD: GV 86-2 AZTEC 1000
SHL: 2029' FSL 1548' FWL S2 T7S R95W BHL: 618' FSL 595' FEL S3 T7S R95W		KB 5846 FT DF GL 5821 FT	
SEC 3	TWP 7S	RGE 95W	
		DATE	18-May-2014

