

COLUMBINE LOGGING

Scale: 5" / 100'
Measured Depth Log

Well Name Circle B 06-66-09-0461 CH Vert

Location NENW Sec 09-T6N-R66W

State Colorado

County Weld

Country USA

Rig Number Nabor M22

API Number 05-123-37726

Region DJ Basin

Field Eaton

Spud Date 3/14/2014

Drilling Completed 3/21/2014

Surface Coordinates 262' FNL 2222' FWL

Bottom Hole Coordinates Projected
SESW Sec 09-T6N-R66W
500' FSL 2500' FWL

Ground Elevation 4841'

K.B. Elevation 4836'

Logged Interval 5800' **To** 6650'

Total Depth 11759'

Formation Shannon

Type of Drilling Fluid LSND

Operator

Company Bill Barrett Corp.

Address 1099 18th Street, Suite 2300
Denver, CO 80202

Geologist

Name John Roesink

Company Bill Barrett Corp.

Address 1099 18th Street, Suite 2300
Denver, CO 80202

Other

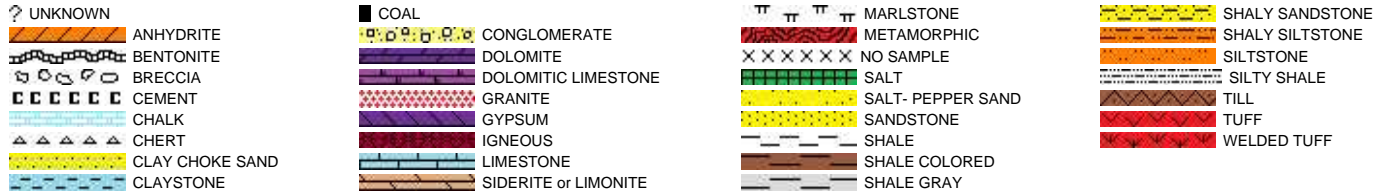
Charles Trodick

Senior Wellsite Geologist
Columbine Logging Inc.

Mark Raimo

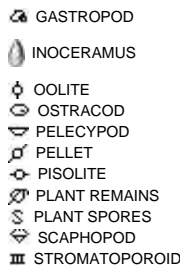
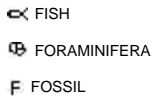
Wellsite Geologist
Columbine Logging Inc.

Rock Types

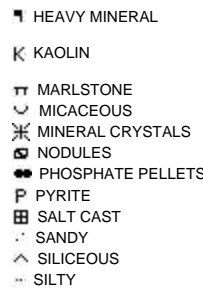
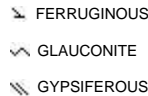
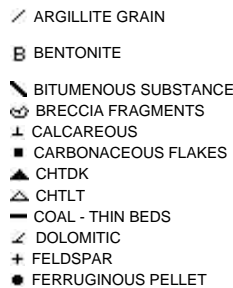
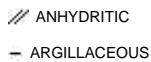


Accessories

Fossils



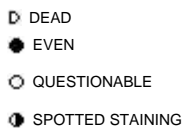
Minerals



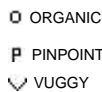
Stringer

Other Symbols

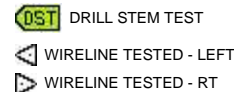
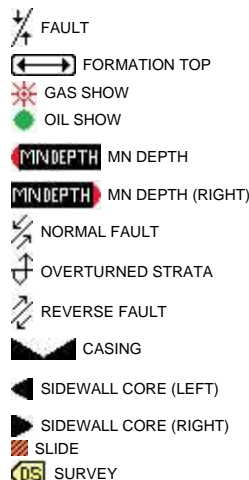
Oil Show



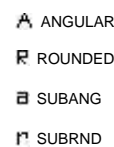
Porosity



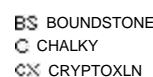
Engineering



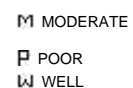
Rounding

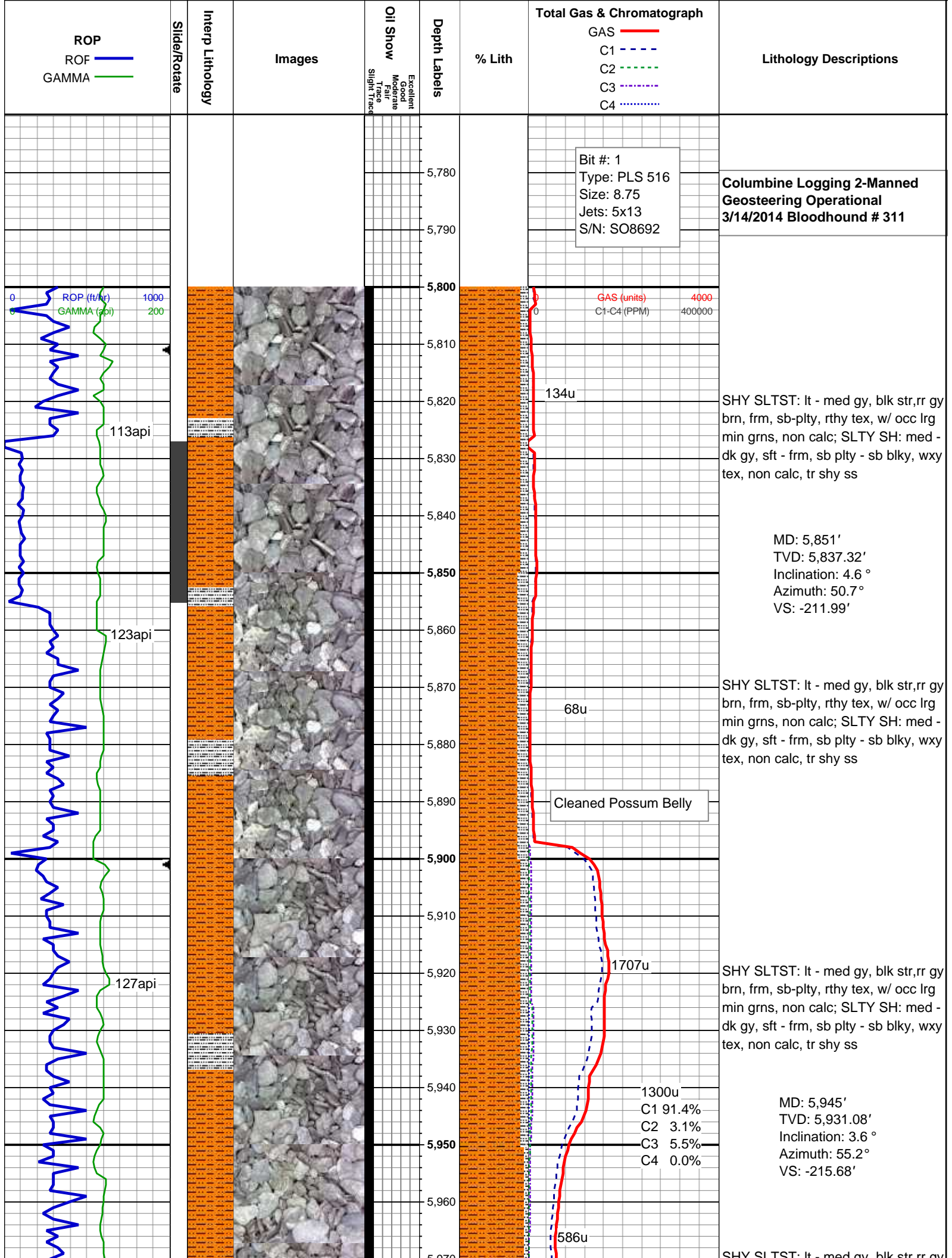


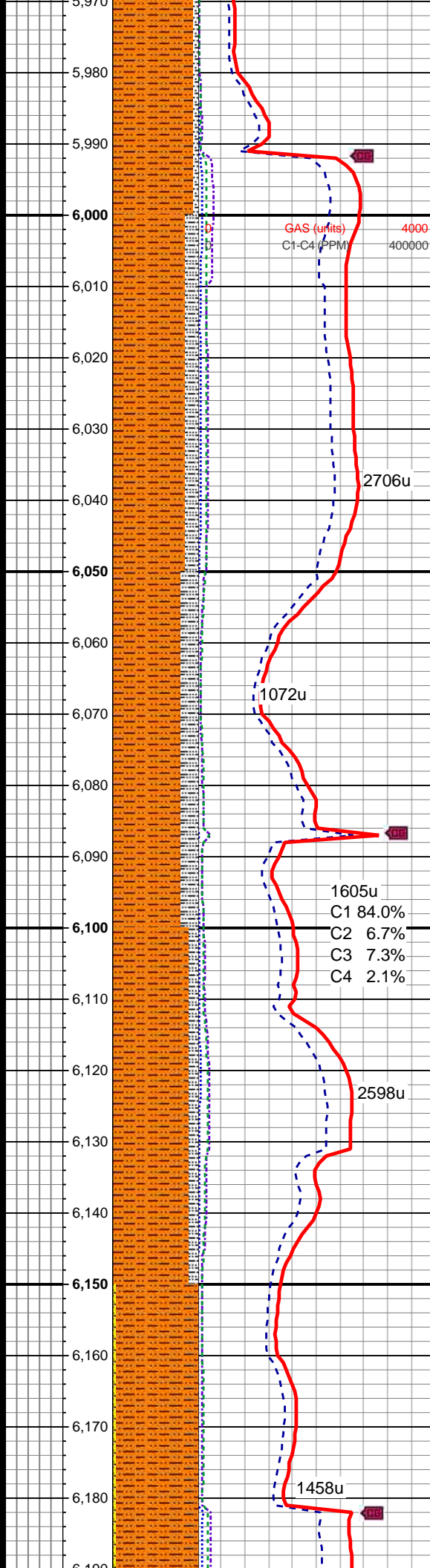
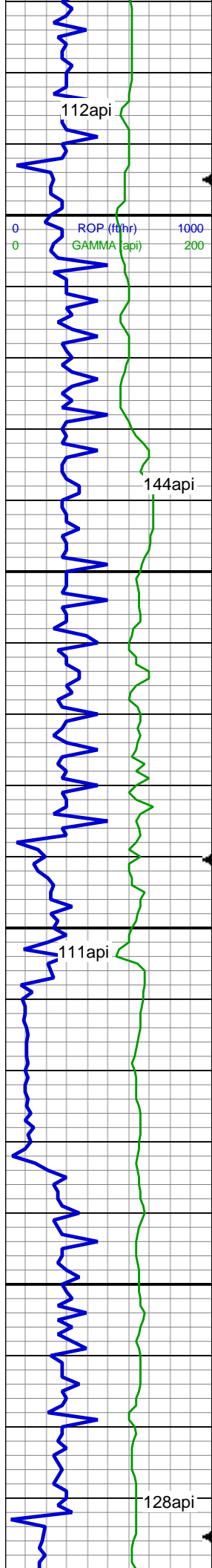
Textures



Sorting







SHY SLTST: lt - med gy, blk str, rr gy
brn, frm, sb-plty, rthy tex, w/ occ lrg
min grns, non calc; SLTY SH: med -
dk gy, sft - frm, sb plty - sb blk, wxy
tex, non calc, tr shy ss

In/Out Wt: 10.3/10.4, Vis 33/34

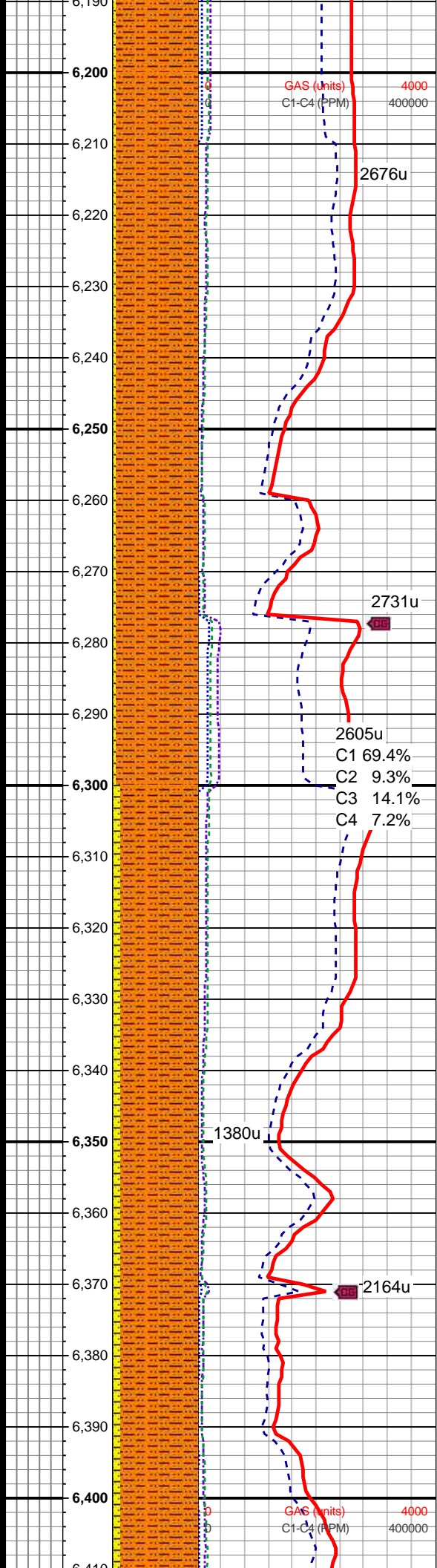
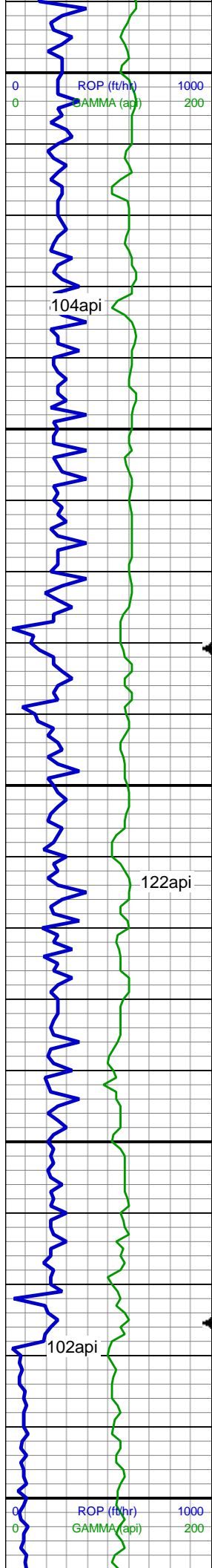
SHY SLTST: lt - med gy, blk str, rr gy
brn, frm, sb-plty, rthy tex, w/ occ lrg
min grns, non calc; SLTY SH: med -
dk gy, sft - frm, sb plty - sb blk, wxy
tex, non calc, tr shy ss

MD: 6,040'
TVD: 6,025.94'
Inclination: 2.5 °
Azimuth: 66.5 °
VS: -217.9'

SHY SLTST: lt - med gy, blk str, rr gy
brn, frm, sb-plty, rthy tex, w/ occ lrg
min grns, non calc; SLTY SH: med -
dk gy, sft - frm, sb plty - sb blk, wxy
tex, non calc, tr shy ss

MD: 6,135'
TVD: 6,120.86'
Inclination: 2.3 °
Azimuth: 38.4 °
VS: -220'

SHY SLTST: lt - med gy, blk str, tr gy
brn, frm, sb-plty, rthy tex, w/occ lrg
min grns, non calc; SHY SS: lt -
med gy, occ dk gy lam, v frm,
sb-plty, aren, tr cl lam, non calc



SHY SLTST: lt - med gy, blk str, tr gy
brn, frm, sb-plty, rthy tex, w/occ lrg
min grns, non calc; SHY SS: lt -
med gy, occ dk gy lam, v frm,
sb-plty, aren, tr cl lam, non calc

MD: 6,230'
TVD: 6,215.8'
Inclination: 1.8 °
Azimuth: 53.9 °
VS: -222.21'

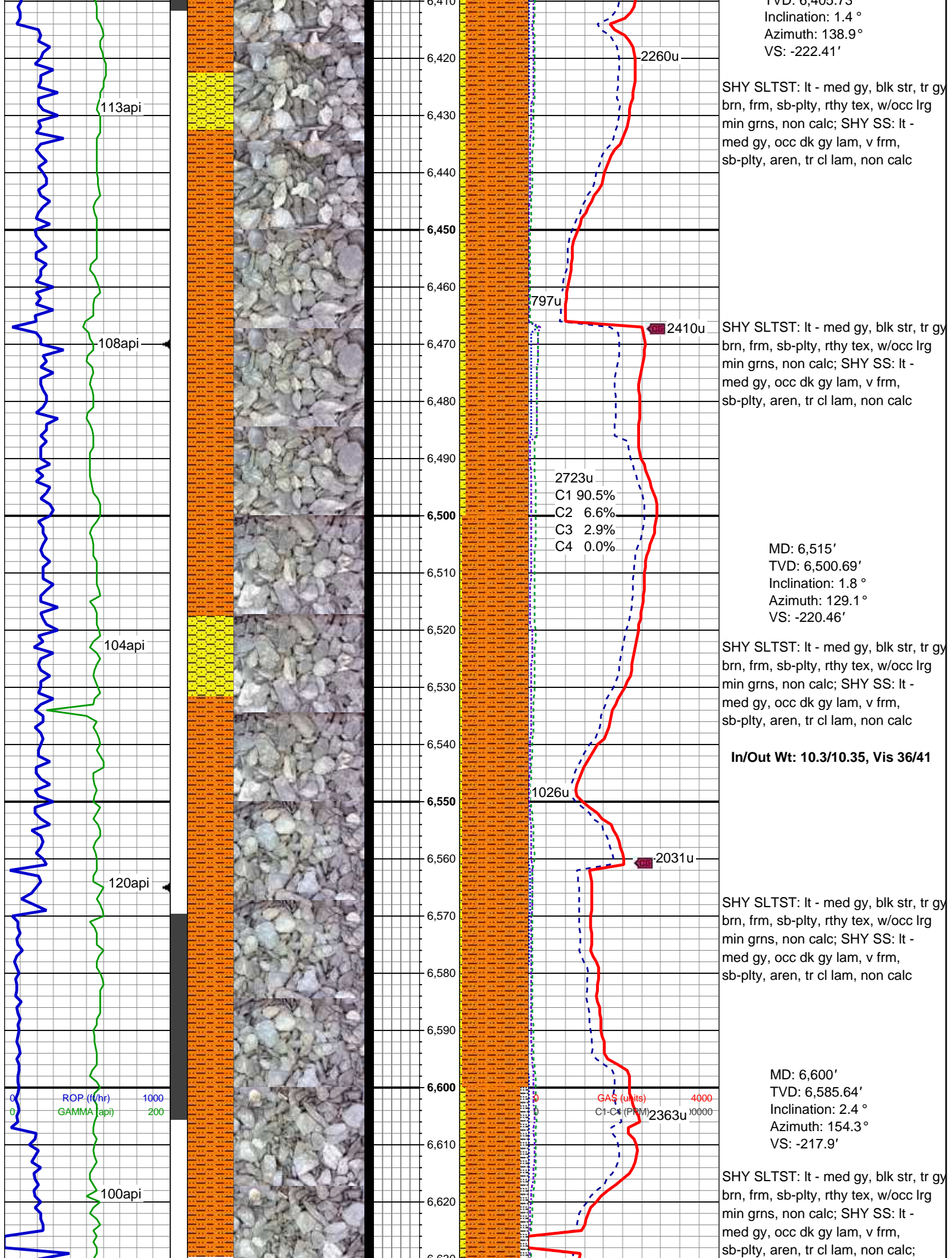
SHY SLTST: lt - med gy, blk str, tr gy
brn, frm, sb-plty, rthy tex, w/occ lrg
min grns, non calc; SHY SS: lt -
med gy, occ dk gy lam, v frm,
sb-plty, aren, tr cl lam, non calc

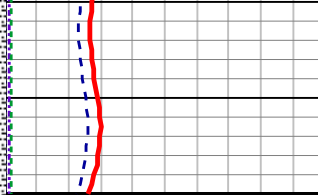
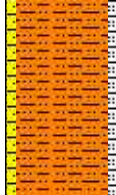
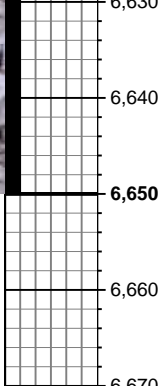
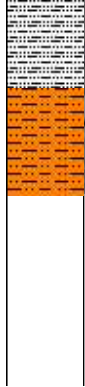
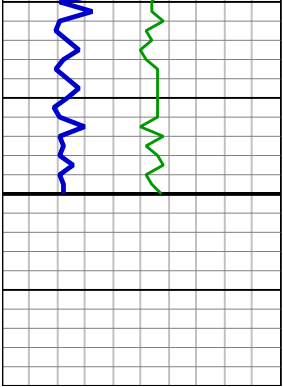
SHY SLTST: lt - med gy, blk str, tr gy
brn, frm, sb-plty, rthy tex, w/occ lrg
min grns, non calc; SHY SS: lt -
med gy, occ dk gy lam, v frm,
sb-plty, aren, tr cl lam, non calc

MD: 6,325'
TVD: 6,310.76'
Inclination: 1.7 °
Azimuth: 79.2 °
VS: -223.17'

SHY SLTST: lt - med gy, blk str, tr gy
brn, frm, sb-plty, rthy tex, w/occ lrg
min grns, non calc; SHY SS: lt -
med gy, occ dk gy lam, v frm,
sb-plty, aren, tr cl lam, non calc

MD: 6,420'
TVD: 6,405.72'





SLTY SH: med - dk gy, sft-sl frm,
sb-plty - plty, wxy & sl slty tex, v sl
calc;

Reached KOP of 6,650' MD at
14:20 MST 3/16/2014

Log continues on Circle B
06-66-09-0461 CH Horz