

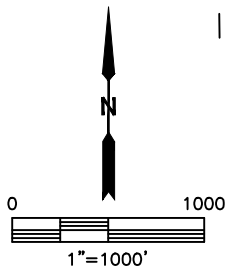
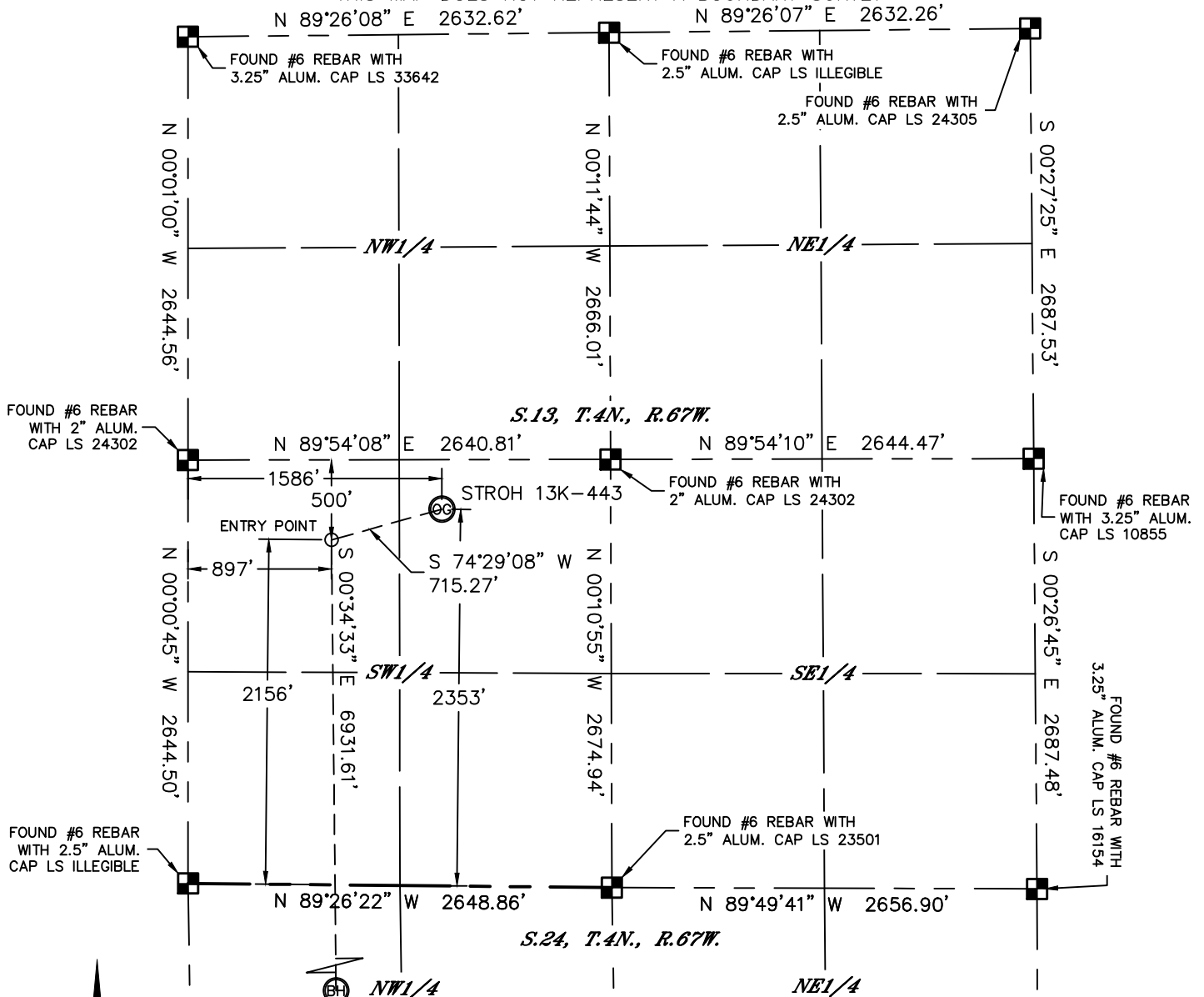


Lat40°, Inc. 1635 Foxtrail Drive, Suite 325 Loveland, CO 970-776-3321

WELL LOCATION CERTIFICATE

SECTION: 13
TOWNSHIP: 4N
RANGE: 67W

THIS MAP DOES NOT REPRESENT A BOUNDARY SURVEY



In accordance with a request from Mac Neumann with PDC ENERGY

Lat40°, Inc. has determined the surface location of the STROH 13K-443 to be 2353' from the SOUTH line and 1586' from the WEST line as measured at right angles from the section lines of Section 13, Township 4 North, Range 67 West and the bottom hole to be 500' from the SOUTH line and 897' from the WEST line as measured at right angles from the section lines of Section 24, Township 4 North, Range 67 West of the Sixth Principal Meridian, County of Weld, State of Colorado.

I hereby state that this Well Location Certificate was prepared by me, or under my direct supervision, that the fieldwork was completed on 1/24/2014, for and on behalf of PDC ENERGY. That this is not a Land Survey Plat or an Improvement Survey Plat, and that it is not to be relied upon for establishment of fence, building, or other future improvement lines.

SURFACE LOCATION

LAT: 40.31103°N
LONG: 104.84297°W
PDOP: 1.9
ELEV: 4805'
1/4,1/4: NE1/4SW1/4

BOTTOM HOLE

LAT: 40.29150°N
LONG: 104.84538°W
1/4,1/4: SW1/4SW1/4

ENTRY POINT

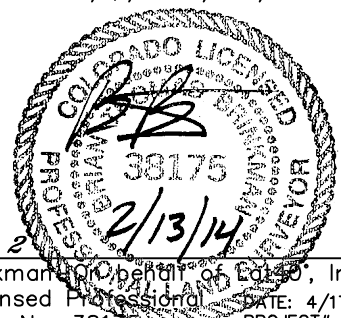
LAT: 40.31052°N
LONG: 104.84545°W
1/4,1/4: NW1/4SW1/4

LEGEND

- = ALIQUOT MONUMENT AS DESCRIBED
- = CALCULATED POSITION

SHEET 1 OF 2

Brian T. Brinkman, on behalf of Lat40°, Inc.
Colorado Licensed Professional Land Surveyor No. 38175
DATE: 4/17/2014
PROJECT#: 2013156



NOTE:

- 1) Bearings shown are Grid Bearings of the Colorado State Plane Coordinate System, North Zone, North American Datum 1983/2007. The lineal dimensions as contained herein are based upon the "U.S. Survey Foot."
- 2) Ground elevations are based on an observed GPS elevation (NAVD 1988 DATUM).
- 3) IMPROVEMENTS: See LOCATION DRAWING for all visible improvements within 500' of disturbed area.
- 4) SURFACE USE: CROP LAND
- 5) INSTRUMENT OPERATOR: ADAM KELLY
- 6) NEAREST CULTURAL ITEMS:
BUILDING: ±2520' NW
BUILDING UNIT: ±2520' NW
HIGH OCCUPANCY BUILDING UNIT: ±4855' NE
DESIGNATED OUTSIDE ACTIVITY AREA: 5280'+
PUBLIC ROAD: (CR 23) 1563' W
ABOVEGROUND UTILITY: 1540' W
RAILROAD: ±2521' SE
PROPERTY LINE: 310' N

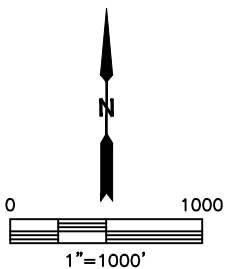
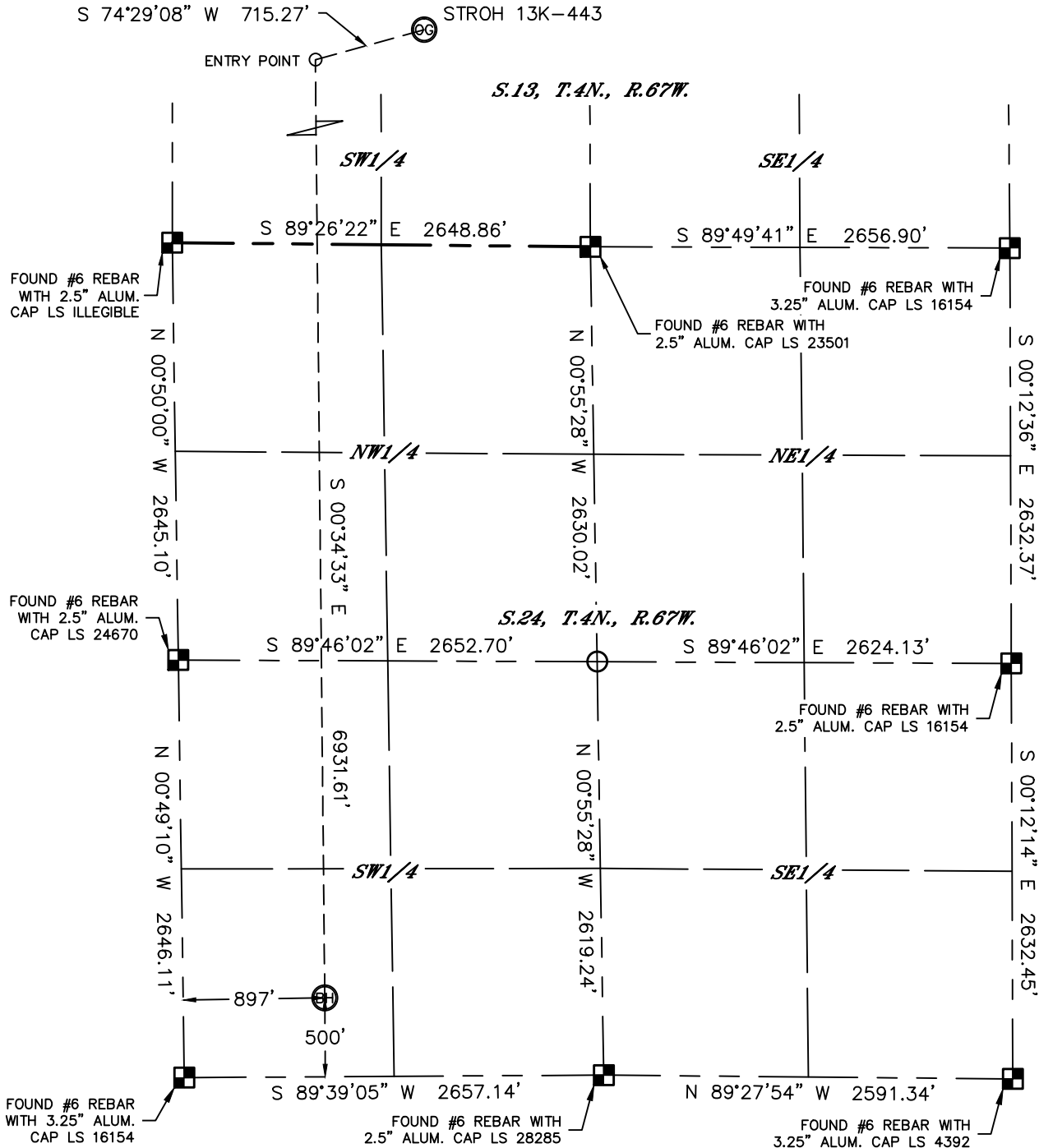


Lat40°, Inc. 1635 Foxtrail Drive, Suite 325 Loveland, CO 970-776-3321

WELL LOCATION CERTIFICATE

SECTION: 13
TOWNSHIP: 4N
RANGE: 67W

THIS MAP DOES NOT REPRESENT A BOUNDARY SURVEY

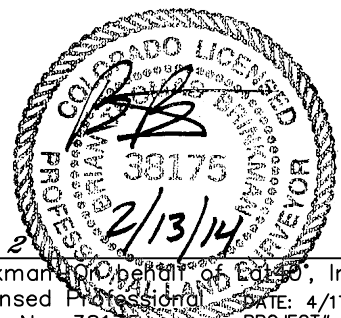


LEGEND

- = ALIQUOT MONUMENT AS DESCRIBED
- = CALCULATED POSITION

SHEET 2 OF 2

Brian T. Brinkman, Principal of Lat40°, Inc.
Colorado Licensed Professional Land Surveyor No. 38175
DATE: 4/17/2014
PROJECT#: 2013156



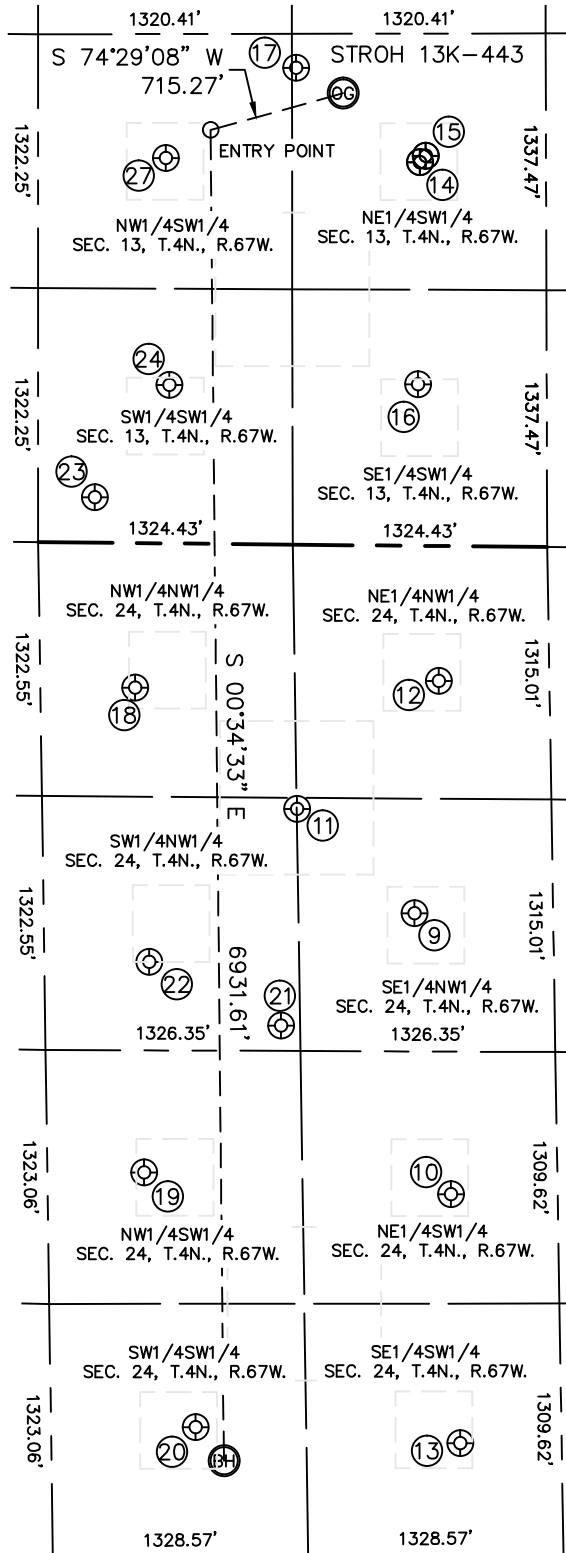


Lat40°, Inc. 1635 Foxtrail Drive, Suite 325 Loveland, CO 970-776-3321

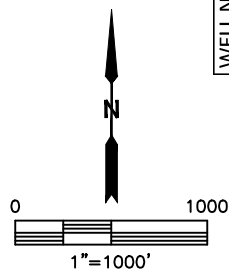
SITE SKETCH

STROH 13K-443

SECTION: 13
TOWNSHIP: 4N
RANGE: 67W



WELL NO.	WELL NAME	SHL FOOTAGE			SHL LAT°	SHL LONG°	PDOP	ELEV (FT.)	1/4/1/4
		1915	FNL	FWL					
9	ORR 24-1	1882	FSL	FWL	40.29529	-104.84175	1.8	4727	SENW
10	RORY 1	1377	FNL	FWL	40.30081	-104.84111	1.6	4728	NESW
11	STROH 5	703	FNL	FWL	40.30262	-104.84393	1.5	4802	SENW
12	STROH 24-21	584	FSL	FWL	40.29173	-104.84127	1.5	4749	NENW
13	JOHNSTON 1	1997	FSL	FWL	40.29173	-104.84097	1.9	4729	SESW
14	UPRC 13-11E	2031	FSL	FWL	40.31004	-104.84155	1.7	4808	NESW
15	STROH 013-21D	840	FSL	FWL	40.31013	-104.84144	1.5	4808	NESW
16	ALLEN 1	2482	FSL	FWL	40.30686	-104.84161	2.0	4805	SESW
17	STROH 013-20	754	FNL	FWL	40.31140	-104.84385	2.8	4809	NESW
18	STROH 24-22	2005	FSL	FWL	40.30256	-104.84693	2.0	4819	NWNW
19	MATT 1	677	FSL	FWL	40.29563	-104.84683	2.4	4729	NWSW
20	SOPHIE 1	2505	FNL	FWL	40.29199	-104.84591	2.1	4732	SWSW
21	RORY 1-71	2181	FNL	FWL	40.29772	-104.84426	1.8	4726	SWNW
22	STROH 24-12	236	FSL	FWL	40.29864	-104.84670	1.7	4813	SWNW
23	STROH PC 013-79HN	825	FSL	FWL	40.30528	-104.84766	1.3	4844	SWSW
24	UPRC 13-13E	2006	FSL	FWL	40.30688	-104.84625	1.6	4836	SWSW
27	UPRC 13-12E	2006	FSL	FWL	40.31012	-104.84629	2.0	4816	NWSW



DATE: 4/17/2014
PROJECT#: 2013156