



Company: Extraction Oil & Gas
Field: Weld Co., Co
Location: Sec.28-T07N-R67W
Well: Nelson Farm #7
Borehole: Original Hole
Rig: Xtreme 7
Plan: Rev 0

PATHFINDER
A Schlumberger Company

SECTION DETAILS

Sec	MD	Inc	Azi	TVD	+N/-S	+E/-W	Dleg	TFace	Vsect
1	0.00	0.00	0.00	0.00	0.00	0.00	0.00	0.00	0.00
2	1000.00	0.00	0.00	1000.00	0.00	0.00	0.00	0.00	0.00
3	1402.17	8.04	233.89	1400.85	-16.61	-22.77	2.00	233.89	-21.77
4	6187.93	8.04	233.89	6139.53	-411.28	-563.74	0.00	0.00	-539.15
5	6590.10	0.00	0.00	6540.38	-427.89	-586.51	2.00	180.00	-560.92
6	6690.10	0.00	0.00	6640.38	-427.89	-586.51	0.00	0.00	-560.92
7	7690.10	90.00	90.00	7277.00	-427.89	50.11	9.00	90.00	74.65
8	15064.59	90.00	90.00	7277.00	-427.89	7424.60	0.00	0.00	7436.92

WELL DETAILS: Nelson Farm #7

+N/-S	+E/-W	GL 4968.00	KB @ 4984.00usft (Xtreme 7 - 16')	Longitude
0.00	0.00	Northing 1443811.92	Easting 3164957.46	40° 33' 0.533 N 104° 54' 23.026 W

WELLBORE TARGET DETAILS

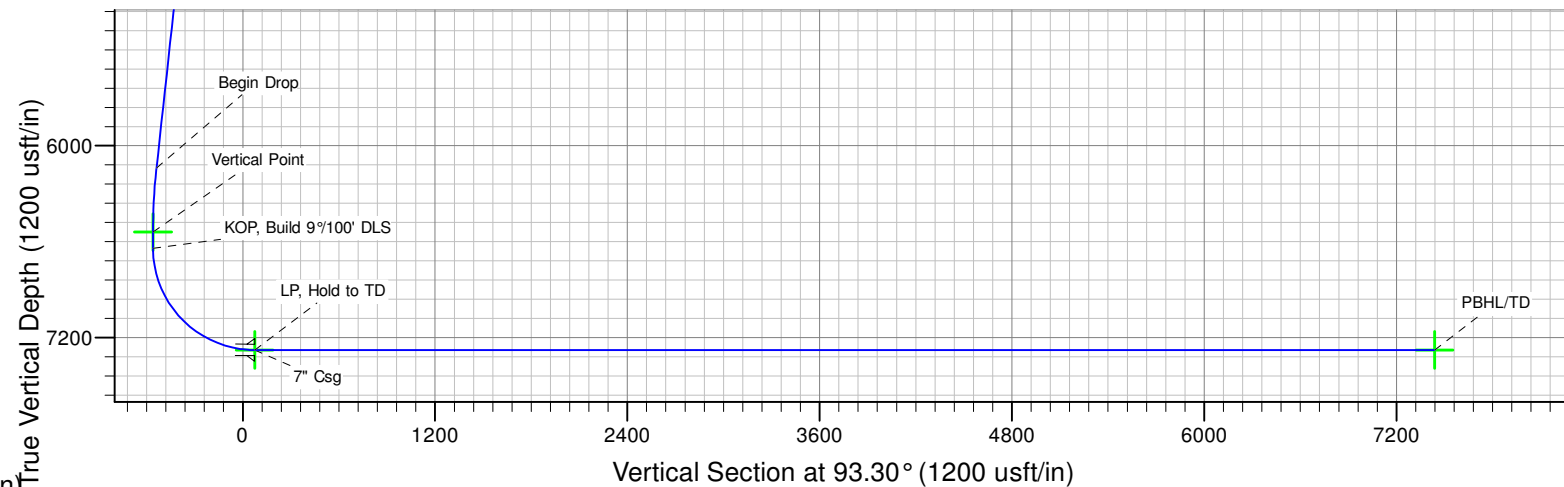
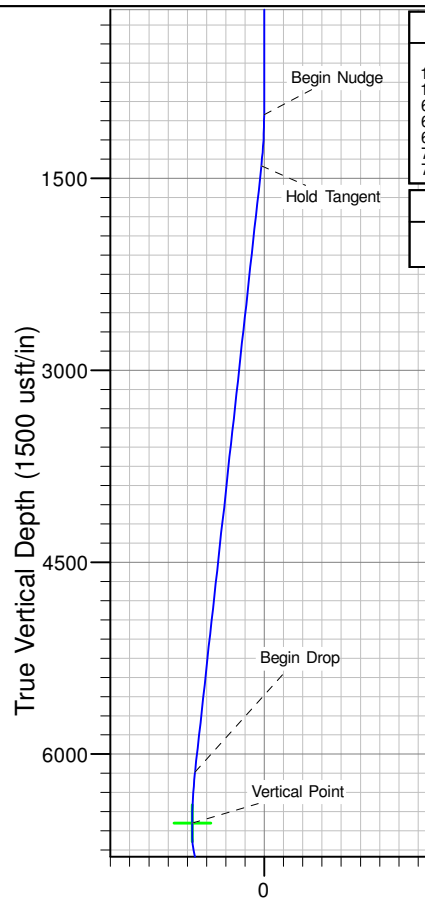
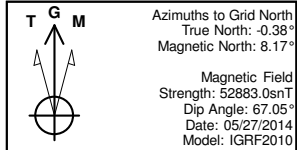
Name	TVD	+N/-S	+E/-W	Shape
KOP #7	6540.38	-427.89	-586.51	Point
LP#7	7277.00	-427.89	50.11	Point
PBHL Nelson Farm #7	7277.00	-427.89	7424.60	Point

ANNOTATIONS

TVD	MD	Annotation
1000.00	1000.00	Begin Nudge
1400.85	1402.17	Hold Tangent
6139.53	6187.93	Begin Drop
6540.38	6590.10	Vertical Point
6640.38	6690.10	KOP, Build 9°/100' DLS
7277.00	7690.10	LP, Hold to TD
7277.00	15064.59	PBHL/TD

CASING DETAILS

TVD	MD	Name	Size
7277.00	7690.10	7" Csg	7

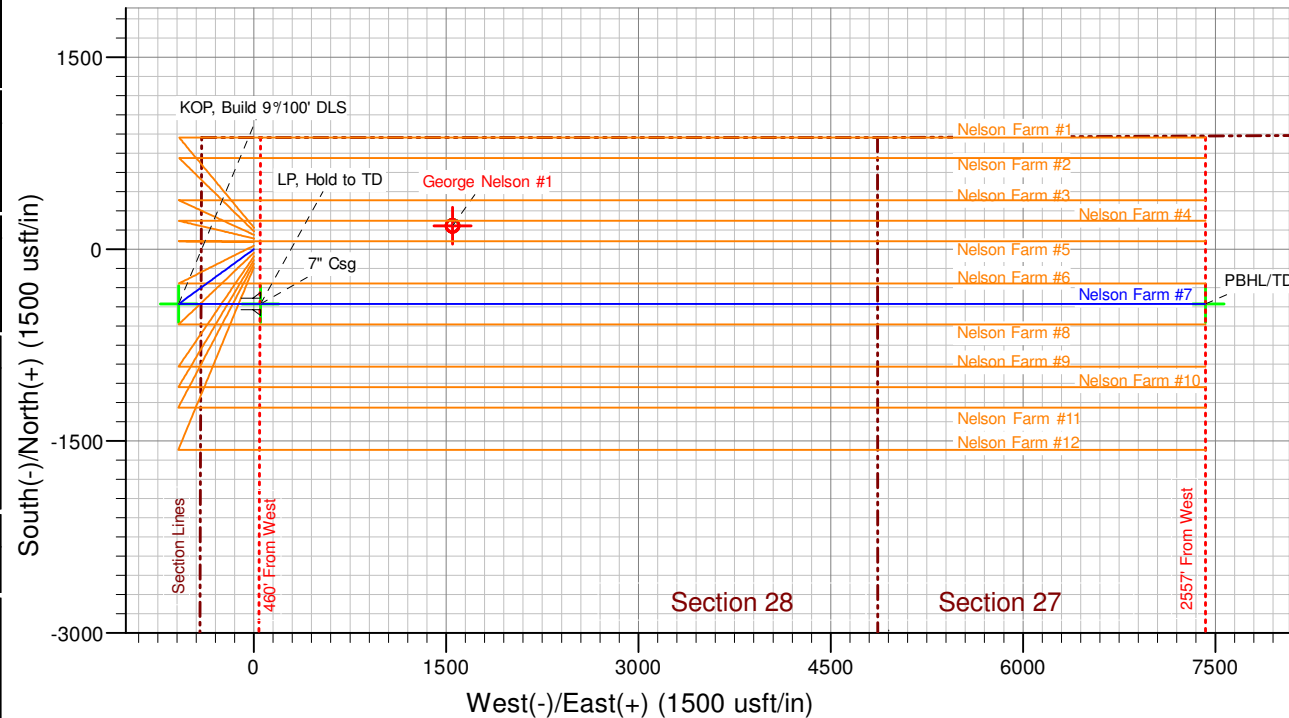


SHL: 872' FNL & 409' FWL
(Sec.28-T07N-R67W)
PBHL: 1313' FNL & 2556' FWL
(Sec.27-T07N-R67W)

Notice:
Section Lines and Hardlines
are estimates only and are
subject to customer approval

Nelson Farm #7 Rev 0

Created By: J Rieke Date: 14:05, May 29 2014





Extraction Oil & Gas

**Weld Co., Co
Sec.28-T07N-R67W
Nelson Farm #7**

Original Hole

Plan: Rev 0

Standard Survey Report

29 May, 2014



Company:	Extraction Oil & Gas	Local Co-ordinate Reference:	Well Nelson Farm #7
Project:	Weld Co., Co	TVD Reference:	KB @ 4984.00usft (Xtreme 7 - 16')
Site:	Sec.28-T07N-R67W	MD Reference:	KB @ 4984.00usft (Xtreme 7 - 16')
Well:	Nelson Farm #7	North Reference:	Grid
Wellbore:	Original Hole	Survey Calculation Method:	Minimum Curvature
Design:	Rev 0	Database:	EDM 5000.1 Single User Db

Project	Weld Co., Co		
Map System:	US State Plane 1983	System Datum:	Mean Sea Level
Geo Datum:	North American Datum 1983		
Map Zone:	Colorado Northern Zone		

Site		Sec.28-T07N-R67W					
Site Position:		Northing:	1,443,979.89	usft	Latitude:	40° 33' 2.192 N	
From:	Lat/Long	Easting:	3,164,958.28	usft	Longitude:	104° 54' 23.000 W	
Position Uncertainty:		0.00	usft	Slot Radius:	13-3/16 "	Grid Convergence:	0.38 °

Well	Nelson Farm #7					
Well Position	+N/-S	0.00 usft	Northing:	1,443,811.92 usft	Latitude:	40° 33' 0.533 N
	+E/-W	0.00 usft	Easting:	3,164,957.46 usft	Longitude:	104° 54' 23.026 W
Position Uncertainty		0.00 usft	Wellhead Elevation:	4,984.00 usft	Ground Level:	4,968.00 usft

Wellbore	Original Hole				
Magnetics	Model Name	Sample Date	Declination (°)	Dip Angle (°)	Field Strength (nT)
	IGRF2010	05/27/14	8.56	67.05	52,883

Design	Rev 0				
Audit Notes:					
Version:	Phase:	PROTOTYPE		Tie On Depth:	0.00
Vertical Section:	Depth From (TVD) (usft)	+N/-S (usft)	+E/-W (usft)	Direction (°)	
	0.00	0.00	0.00	93.30	

Survey Tool Program	Date	05/29/14			
From (usft)	To (usft)	Survey (Wellbore)	Tool Name	Description	
0.00	15,064.59	Rev 0 (Original Hole)	Pathfinder	Pathfinder MWD	

Planned Survey										
Measured Depth (usft)	Inclination (°)	Azimuth (°)	Vertical Depth (usft)	+N/-S (usft)	+E/-W (usft)	Vertical Section (usft)	Dogleg Rate (°/100usft)	Build Rate (°/100usft)	Turn Rate (°/100usft)	
0.00	0.00	0.00	0.00	0.00	0.00	0.00	0.00	0.00	0.00	
100.00	0.00	0.00	100.00	0.00	0.00	0.00	0.00	0.00	0.00	
200.00	0.00	0.00	200.00	0.00	0.00	0.00	0.00	0.00	0.00	
300.00	0.00	0.00	300.00	0.00	0.00	0.00	0.00	0.00	0.00	
400.00	0.00	0.00	400.00	0.00	0.00	0.00	0.00	0.00	0.00	
500.00	0.00	0.00	500.00	0.00	0.00	0.00	0.00	0.00	0.00	
600.00	0.00	0.00	600.00	0.00	0.00	0.00	0.00	0.00	0.00	
700.00	0.00	0.00	700.00	0.00	0.00	0.00	0.00	0.00	0.00	
800.00	0.00	0.00	800.00	0.00	0.00	0.00	0.00	0.00	0.00	
900.00	0.00	0.00	900.00	0.00	0.00	0.00	0.00	0.00	0.00	



Company:	Extraction Oil & Gas	Local Co-ordinate Reference:	Well Nelson Farm #7
Project:	Weld Co., Co	TVD Reference:	KB @ 4984.00usft (Xtreme 7 - 16')
Site:	Sec.28-T07N-R67W	MD Reference:	KB @ 4984.00usft (Xtreme 7 - 16')
Well:	Nelson Farm #7	North Reference:	Grid
Wellbore:	Original Hole	Survey Calculation Method:	Minimum Curvature
Design:	Rev 0	Database:	EDM 5000.1 Single User Db

Planned Survey									
Measured Depth (usft)	Inclination (°)	Azimuth (°)	Vertical Depth (usft)	+N/-S (usft)	+E/-W (usft)	Vertical Section (usft)	Dogleg Rate (°/100usft)	Build Rate (°/100usft)	Turn Rate (°/100usft)
1,000.00	0.00	0.00	1,000.00	0.00	0.00	0.00	0.00	0.00	0.00
Begin Nudge									
1,100.00	2.00	233.89	1,099.98	-1.03	-1.41	-1.35	2.00	2.00	0.00
1,200.00	4.00	233.89	1,199.84	-4.11	-5.64	-5.39	2.00	2.00	0.00
1,300.00	6.00	233.89	1,299.45	-9.25	-12.68	-12.13	2.00	2.00	0.00
1,400.00	8.00	233.89	1,398.70	-16.43	-22.52	-21.54	2.00	2.00	0.00
1,402.17	8.04	233.89	1,400.85	-16.61	-22.77	-21.77	2.00	2.00	0.00
Hold Tangent									
1,500.00	8.04	233.89	1,497.72	-24.68	-33.83	-32.35	0.00	0.00	0.00
1,600.00	8.04	233.89	1,596.73	-32.92	-45.13	-43.16	0.00	0.00	0.00
1,700.00	8.04	233.89	1,695.75	-41.17	-56.43	-53.97	0.00	0.00	0.00
1,800.00	8.04	233.89	1,794.77	-49.42	-67.74	-64.78	0.00	0.00	0.00
1,900.00	8.04	233.89	1,893.78	-57.67	-79.04	-75.59	0.00	0.00	0.00
2,000.00	8.04	233.89	1,992.80	-65.91	-90.35	-86.40	0.00	0.00	0.00
2,100.00	8.04	233.89	2,091.82	-74.16	-101.65	-97.21	0.00	0.00	0.00
2,200.00	8.04	233.89	2,190.83	-82.41	-112.95	-108.02	0.00	0.00	0.00
2,300.00	8.04	233.89	2,289.85	-90.65	-124.26	-118.84	0.00	0.00	0.00
2,400.00	8.04	233.89	2,388.86	-98.90	-135.56	-129.65	0.00	0.00	0.00
2,500.00	8.04	233.89	2,487.88	-107.15	-146.86	-140.46	0.00	0.00	0.00
2,600.00	8.04	233.89	2,586.90	-115.39	-158.17	-151.27	0.00	0.00	0.00
2,700.00	8.04	233.89	2,685.91	-123.64	-169.47	-162.08	0.00	0.00	0.00
2,800.00	8.04	233.89	2,784.93	-131.89	-180.78	-172.89	0.00	0.00	0.00
2,900.00	8.04	233.89	2,883.95	-140.13	-192.08	-183.70	0.00	0.00	0.00
3,000.00	8.04	233.89	2,982.96	-148.38	-203.38	-194.51	0.00	0.00	0.00
3,100.00	8.04	233.89	3,081.98	-156.63	-214.69	-205.32	0.00	0.00	0.00
3,200.00	8.04	233.89	3,180.99	-164.87	-225.99	-216.13	0.00	0.00	0.00
3,300.00	8.04	233.89	3,280.01	-173.12	-237.30	-226.94	0.00	0.00	0.00
3,400.00	8.04	233.89	3,379.03	-181.37	-248.60	-237.75	0.00	0.00	0.00
3,500.00	8.04	233.89	3,478.04	-189.61	-259.90	-248.56	0.00	0.00	0.00
3,600.00	8.04	233.89	3,577.06	-197.86	-271.21	-259.37	0.00	0.00	0.00
3,700.00	8.04	233.89	3,676.08	-206.11	-282.51	-270.18	0.00	0.00	0.00
3,800.00	8.04	233.89	3,775.09	-214.35	-293.81	-280.99	0.00	0.00	0.00
3,900.00	8.04	233.89	3,874.11	-222.60	-305.12	-291.81	0.00	0.00	0.00
4,000.00	8.04	233.89	3,973.12	-230.85	-316.42	-302.62	0.00	0.00	0.00
4,100.00	8.04	233.89	4,072.14	-239.09	-327.73	-313.43	0.00	0.00	0.00
4,200.00	8.04	233.89	4,171.16	-247.34	-339.03	-324.24	0.00	0.00	0.00
4,300.00	8.04	233.89	4,270.17	-255.59	-350.33	-335.05	0.00	0.00	0.00
4,400.00	8.04	233.89	4,369.19	-263.83	-361.64	-345.86	0.00	0.00	0.00
4,500.00	8.04	233.89	4,468.20	-272.08	-372.94	-356.67	0.00	0.00	0.00
4,600.00	8.04	233.89	4,567.22	-280.33	-384.25	-367.48	0.00	0.00	0.00
4,700.00	8.04	233.89	4,666.24	-288.57	-395.55	-378.29	0.00	0.00	0.00
4,800.00	8.04	233.89	4,765.25	-296.82	-406.85	-389.10	0.00	0.00	0.00
4,900.00	8.04	233.89	4,864.27	-305.07	-418.16	-399.91	0.00	0.00	0.00
5,000.00	8.04	233.89	4,963.29	-313.31	-429.46	-410.72	0.00	0.00	0.00



Company:	Extraction Oil & Gas	Local Co-ordinate Reference:	Well Nelson Farm #7
Project:	Weld Co., Co	TVD Reference:	KB @ 4984.00usft (Xtreme 7 - 16')
Site:	Sec.28-T07N-R67W	MD Reference:	KB @ 4984.00usft (Xtreme 7 - 16')
Well:	Nelson Farm #7	North Reference:	Grid
Wellbore:	Original Hole	Survey Calculation Method:	Minimum Curvature
Design:	Rev 0	Database:	EDM 5000.1 Single User Db

Planned Survey									
Measured Depth (usft)	Inclination (°)	Azimuth (°)	Vertical Depth (usft)	+N/-S (usft)	+E/-W (usft)	Vertical Section (usft)	Dogleg Rate (°/100usft)	Build Rate (°/100usft)	Turn Rate (°/100usft)
5,100.00	8.04	233.89	5,062.30	-321.56	-440.76	-421.53	0.00	0.00	0.00
5,200.00	8.04	233.89	5,161.32	-329.81	-452.07	-432.34	0.00	0.00	0.00
5,300.00	8.04	233.89	5,260.33	-338.05	-463.37	-443.15	0.00	0.00	0.00
5,400.00	8.04	233.89	5,359.35	-346.30	-474.68	-453.97	0.00	0.00	0.00
5,500.00	8.04	233.89	5,458.37	-354.55	-485.98	-464.78	0.00	0.00	0.00
5,600.00	8.04	233.89	5,557.38	-362.79	-497.28	-475.59	0.00	0.00	0.00
5,700.00	8.04	233.89	5,656.40	-371.04	-508.59	-486.40	0.00	0.00	0.00
5,800.00	8.04	233.89	5,755.42	-379.29	-519.89	-497.21	0.00	0.00	0.00
5,900.00	8.04	233.89	5,854.43	-387.53	-531.20	-508.02	0.00	0.00	0.00
6,000.00	8.04	233.89	5,953.45	-395.78	-542.50	-518.83	0.00	0.00	0.00
6,100.00	8.04	233.89	6,052.46	-404.03	-553.80	-529.64	0.00	0.00	0.00
6,187.93	8.04	233.89	6,139.53	-411.28	-563.74	-539.15	0.00	0.00	0.00
Begin Drop									
6,200.00	7.80	233.89	6,151.48	-412.26	-565.09	-540.43	2.00	-2.00	0.00
6,300.00	5.80	233.89	6,250.78	-419.24	-574.65	-549.58	2.00	-2.00	0.00
6,400.00	3.80	233.89	6,350.42	-424.17	-581.42	-556.05	2.00	-2.00	0.00
6,500.00	1.80	233.89	6,450.29	-427.06	-585.37	-559.83	2.00	-2.00	0.00
6,590.10	0.00	0.00	6,540.38	-427.89	-586.51	-560.92	2.00	-2.00	0.00
Vertical Point									
6,600.00	0.00	0.00	6,550.28	-427.89	-586.51	-560.92	0.00	0.00	0.00
6,690.10	0.00	0.00	6,640.38	-427.89	-586.51	-560.92	0.00	0.00	0.00
KOP, Build 9°/100' DLS									
6,700.00	0.89	90.00	6,650.28	-427.89	-586.43	-560.84	9.00	9.00	0.00
6,800.00	9.89	90.00	6,749.73	-427.89	-577.05	-551.47	9.00	9.00	0.00
6,900.00	18.89	90.00	6,846.50	-427.89	-552.22	-526.69	9.00	9.00	0.00
7,000.00	27.89	90.00	6,938.19	-427.89	-512.56	-487.09	9.00	9.00	0.00
7,100.00	36.89	90.00	7,022.54	-427.89	-459.05	-433.67	9.00	9.00	0.00
7,200.00	45.89	90.00	7,097.48	-427.89	-392.99	-367.72	9.00	9.00	0.00
7,300.00	54.89	90.00	7,161.17	-427.89	-316.03	-290.89	9.00	9.00	0.00
7,400.00	63.89	90.00	7,212.04	-427.89	-230.05	-205.05	9.00	9.00	0.00
7,500.00	72.89	90.00	7,248.83	-427.89	-137.18	-112.33	9.00	9.00	0.00
7,600.00	81.89	90.00	7,270.63	-427.89	-39.69	-15.01	9.00	9.00	0.00
7,690.10	90.00	90.00	7,277.00	-427.89	50.11	74.65	9.00	9.00	0.00
LP, Hold to TD - 7" Csg									
7,700.00	90.00	90.00	7,277.00	-427.89	60.01	84.53	0.00	0.00	0.00
7,800.00	90.00	90.00	7,277.00	-427.89	160.01	184.36	0.00	0.00	0.00
7,900.00	90.00	90.00	7,277.00	-427.89	260.01	284.20	0.00	0.00	0.00
8,000.00	90.00	90.00	7,277.00	-427.89	360.01	384.03	0.00	0.00	0.00
8,100.00	90.00	90.00	7,277.00	-427.89	460.01	483.87	0.00	0.00	0.00
8,200.00	90.00	90.00	7,277.00	-427.89	560.01	583.70	0.00	0.00	0.00
8,300.00	90.00	90.00	7,277.00	-427.89	660.01	683.54	0.00	0.00	0.00
8,400.00	90.00	90.00	7,277.00	-427.89	760.01	783.37	0.00	0.00	0.00
8,500.00	90.00	90.00	7,277.00	-427.89	860.01	883.20	0.00	0.00	0.00
8,600.00	90.00	90.00	7,277.00	-427.89	960.01	983.04	0.00	0.00	0.00



Company:	Extraction Oil & Gas	Local Co-ordinate Reference:	Well Nelson Farm #7
Project:	Weld Co., Co	TVD Reference:	KB @ 4984.00usft (Xtreme 7 - 16')
Site:	Sec.28-T07N-R67W	MD Reference:	KB @ 4984.00usft (Xtreme 7 - 16')
Well:	Nelson Farm #7	North Reference:	Grid
Wellbore:	Original Hole	Survey Calculation Method:	Minimum Curvature
Design:	Rev 0	Database:	EDM 5000.1 Single User Db

Planned Survey										
Measured Depth (usft)	Inclination (°)	Azimuth (°)	Vertical Depth (usft)	+N/-S (usft)	+E/-W (usft)	Vertical Section (usft)	Dogleg Rate (°/100usft)	Build Rate (°/100usft)	Turn Rate (°/100usft)	
8,700.00	90.00	90.00	7,277.00	-427.89	1,060.01	1,082.87	0.00	0.00	0.00	
8,800.00	90.00	90.00	7,277.00	-427.89	1,160.01	1,182.71	0.00	0.00	0.00	
8,900.00	90.00	90.00	7,277.00	-427.89	1,260.01	1,282.54	0.00	0.00	0.00	
9,000.00	90.00	90.00	7,277.00	-427.89	1,360.01	1,382.38	0.00	0.00	0.00	
9,100.00	90.00	90.00	7,277.00	-427.89	1,460.01	1,482.21	0.00	0.00	0.00	
9,200.00	90.00	90.00	7,277.00	-427.89	1,560.01	1,582.04	0.00	0.00	0.00	
9,300.00	90.00	90.00	7,277.00	-427.89	1,660.01	1,681.88	0.00	0.00	0.00	
9,400.00	90.00	90.00	7,277.00	-427.89	1,760.01	1,781.71	0.00	0.00	0.00	
9,500.00	90.00	90.00	7,277.00	-427.89	1,860.01	1,881.55	0.00	0.00	0.00	
9,600.00	90.00	90.00	7,277.00	-427.89	1,960.01	1,981.38	0.00	0.00	0.00	
9,700.00	90.00	90.00	7,277.00	-427.89	2,060.01	2,081.22	0.00	0.00	0.00	
9,800.00	90.00	90.00	7,277.00	-427.89	2,160.01	2,181.05	0.00	0.00	0.00	
9,900.00	90.00	90.00	7,277.00	-427.89	2,260.01	2,280.88	0.00	0.00	0.00	
10,000.00	90.00	90.00	7,277.00	-427.89	2,360.01	2,380.72	0.00	0.00	0.00	
10,100.00	90.00	90.00	7,277.00	-427.89	2,460.01	2,480.55	0.00	0.00	0.00	
10,200.00	90.00	90.00	7,277.00	-427.89	2,560.01	2,580.39	0.00	0.00	0.00	
10,300.00	90.00	90.00	7,277.00	-427.89	2,660.01	2,680.22	0.00	0.00	0.00	
10,400.00	90.00	90.00	7,277.00	-427.89	2,760.01	2,780.06	0.00	0.00	0.00	
10,500.00	90.00	90.00	7,277.00	-427.89	2,860.01	2,879.89	0.00	0.00	0.00	
10,600.00	90.00	90.00	7,277.00	-427.89	2,960.01	2,979.73	0.00	0.00	0.00	
10,700.00	90.00	90.00	7,277.00	-427.89	3,060.01	3,079.56	0.00	0.00	0.00	
10,800.00	90.00	90.00	7,277.00	-427.89	3,160.01	3,179.39	0.00	0.00	0.00	
10,900.00	90.00	90.00	7,277.00	-427.89	3,260.01	3,279.23	0.00	0.00	0.00	
11,000.00	90.00	90.00	7,277.00	-427.89	3,360.01	3,379.06	0.00	0.00	0.00	
11,100.00	90.00	90.00	7,277.00	-427.89	3,460.01	3,478.90	0.00	0.00	0.00	
11,200.00	90.00	90.00	7,277.00	-427.89	3,560.01	3,578.73	0.00	0.00	0.00	
11,300.00	90.00	90.00	7,277.00	-427.89	3,660.01	3,678.57	0.00	0.00	0.00	
11,400.00	90.00	90.00	7,277.00	-427.89	3,760.01	3,778.40	0.00	0.00	0.00	
11,500.00	90.00	90.00	7,277.00	-427.89	3,860.01	3,878.23	0.00	0.00	0.00	
11,600.00	90.00	90.00	7,277.00	-427.89	3,960.01	3,978.07	0.00	0.00	0.00	
11,700.00	90.00	90.00	7,277.00	-427.89	4,060.01	4,077.90	0.00	0.00	0.00	
11,800.00	90.00	90.00	7,277.00	-427.89	4,160.01	4,177.74	0.00	0.00	0.00	
11,900.00	90.00	90.00	7,277.00	-427.89	4,260.01	4,277.57	0.00	0.00	0.00	
12,000.00	90.00	90.00	7,277.00	-427.89	4,360.01	4,377.41	0.00	0.00	0.00	
12,100.00	90.00	90.00	7,277.00	-427.89	4,460.01	4,477.24	0.00	0.00	0.00	
12,200.00	90.00	90.00	7,277.00	-427.89	4,560.01	4,577.07	0.00	0.00	0.00	
12,300.00	90.00	90.00	7,277.00	-427.89	4,660.01	4,676.91	0.00	0.00	0.00	
12,400.00	90.00	90.00	7,277.00	-427.89	4,760.01	4,776.74	0.00	0.00	0.00	
12,500.00	90.00	90.00	7,277.00	-427.89	4,860.01	4,876.58	0.00	0.00	0.00	
12,600.00	90.00	90.00	7,277.00	-427.89	4,960.01	4,976.41	0.00	0.00	0.00	
12,700.00	90.00	90.00	7,277.00	-427.89	5,060.01	5,076.25	0.00	0.00	0.00	
12,800.00	90.00	90.00	7,277.00	-427.89	5,160.01	5,176.08	0.00	0.00	0.00	
12,900.00	90.00	90.00	7,277.00	-427.89	5,260.01	5,275.92	0.00	0.00	0.00	



Company:	Extraction Oil & Gas	Local Co-ordinate Reference:	Well Nelson Farm #7
Project:	Weld Co., Co	TVD Reference:	KB @ 4984.00usft (Xtreme 7 - 16')
Site:	Sec.28-T07N-R67W	MD Reference:	KB @ 4984.00usft (Xtreme 7 - 16')
Well:	Nelson Farm #7	North Reference:	Grid
Wellbore:	Original Hole	Survey Calculation Method:	Minimum Curvature
Design:	Rev 0	Database:	EDM 5000.1 Single User Db

Planned Survey

Measured Depth (usft)	Inclination (°)	Azimuth (°)	Vertical Depth (usft)	+N/-S (usft)	+E/-W (usft)	Vertical Section (usft)	Dogleg Rate (°/100usft)	Build Rate (°/100usft)	Turn Rate (°/100usft)
13,000.00	90.00	90.00	7,277.00	-427.89	5,360.01	5,375.75	0.00	0.00	0.00
13,100.00	90.00	90.00	7,277.00	-427.89	5,460.01	5,475.58	0.00	0.00	0.00
13,200.00	90.00	90.00	7,277.00	-427.89	5,560.01	5,575.42	0.00	0.00	0.00
13,300.00	90.00	90.00	7,277.00	-427.89	5,660.01	5,675.25	0.00	0.00	0.00
13,400.00	90.00	90.00	7,277.00	-427.89	5,760.01	5,775.09	0.00	0.00	0.00
13,500.00	90.00	90.00	7,277.00	-427.89	5,860.01	5,874.92	0.00	0.00	0.00
13,600.00	90.00	90.00	7,277.00	-427.89	5,960.01	5,974.76	0.00	0.00	0.00
13,700.00	90.00	90.00	7,277.00	-427.89	6,060.01	6,074.59	0.00	0.00	0.00
13,800.00	90.00	90.00	7,277.00	-427.89	6,160.01	6,174.42	0.00	0.00	0.00
13,900.00	90.00	90.00	7,277.00	-427.89	6,260.01	6,274.26	0.00	0.00	0.00
14,000.00	90.00	90.00	7,277.00	-427.89	6,360.01	6,374.09	0.00	0.00	0.00
14,100.00	90.00	90.00	7,277.00	-427.89	6,460.01	6,473.93	0.00	0.00	0.00
14,200.00	90.00	90.00	7,277.00	-427.89	6,560.01	6,573.76	0.00	0.00	0.00
14,300.00	90.00	90.00	7,277.00	-427.89	6,660.01	6,673.60	0.00	0.00	0.00
14,400.00	90.00	90.00	7,277.00	-427.89	6,760.01	6,773.43	0.00	0.00	0.00
14,500.00	90.00	90.00	7,277.00	-427.89	6,860.01	6,873.26	0.00	0.00	0.00
14,600.00	90.00	90.00	7,277.00	-427.89	6,960.01	6,973.10	0.00	0.00	0.00
14,700.00	90.00	90.00	7,277.00	-427.89	7,060.01	7,072.93	0.00	0.00	0.00
14,800.00	90.00	90.00	7,277.00	-427.89	7,160.01	7,172.77	0.00	0.00	0.00
14,900.00	90.00	90.00	7,277.00	-427.89	7,260.01	7,272.60	0.00	0.00	0.00
15,000.00	90.00	90.00	7,277.00	-427.89	7,360.01	7,372.44	0.00	0.00	0.00
15,064.59	90.00	90.00	7,277.00	-427.89	7,424.60	7,436.92	0.00	0.00	0.00
PBHL/TD									

Design Targets

Target Name - hit/miss target - Shape	Dip Angle (°)	Dip Dir. (°)	TVD (usft)	+N/-S (usft)	+E/-W (usft)	Northing (usft)	Easting (usft)	Latitude	Longitude
George Nelson - plan misses target center by 1941.11usft at 4109.33usft MD (4081.38 TVD, -239.86 N, -328.78 E) - Circle (radius 50.00)	0.00	0.01	4,331.00	183.11	1,549.17	1,443,995.04	3,166,506.63	40° 33' 2.239 N	104° 54' 2.941 W
KOP #7 - plan hits target center - Point	0.00	0.00	6,540.38	-427.89	-586.51	1,443,384.03	3,164,370.95	40° 32' 56.343 N	104° 54' 30.660 W
PBHL Nelson Farm #7 - plan hits target center - Point	0.00	0.00	7,277.00	-427.89	7,424.60	1,443,384.04	3,172,382.06	40° 32' 55.802 N	104° 52' 46.884 W
LP#7 - plan hits target center - Point	0.00	0.00	7,277.00	-427.89	50.11	1,443,384.03	3,165,007.57	40° 32' 56.301 N	104° 54' 22.414 W



Company:	Extraction Oil & Gas	Local Co-ordinate Reference:	Well Nelson Farm #7
Project:	Weld Co., Co	TVD Reference:	KB @ 4984.00usft (Xtreme 7 - 16')
Site:	Sec.28-T07N-R67W	MD Reference:	KB @ 4984.00usft (Xtreme 7 - 16')
Well:	Nelson Farm #7	North Reference:	Grid
Wellbore:	Original Hole	Survey Calculation Method:	Minimum Curvature
Design:	Rev 0	Database:	EDM 5000.1 Single User Db

Casing Points				
Measured Depth (usft)	Vertical Depth (usft)	Name	Casing Diameter (")	Hole Diameter (")
7,690.10	7,277.00	7" Csg	7	7-1/2

Plan Annotations				
Measured Depth (usft)	Vertical Depth (usft)	Local Coordinates		Comment
		+N/-S (usft)	+E/-W (usft)	
1000	1000	0	0	Begin Nudge
1402	1401	-17	-23	Hold Tangent
6188	6140	-411	-564	Begin Drop
6590	6540	-428	-587	Vertical Point
6690	6640	-428	-587	KOP, Build 9°/100' DLS
7690	7277	-428	50	LP, Hold to TD
15,065	7277	-428	7425	PBHL/TD

Checked By: _____	Approved By: _____	Date: _____
-------------------	--------------------	-------------