



7535 Hilltop Circle  
Denver, CO 80221  
[www.petro-fs.com](http://www.petro-fs.com)

June 25, 2014

Mr. Matt Lepore, Director  
Colorado Oil and Gas Conservation Commission  
1120 Lincoln Street, Suite 801  
Denver, Colorado 80203

**RE: COGCC Rule 318A.e.: Proposed Wellbore Spacing Unit  
Nelson Farm 6 Well: NWNW, Section 28, Township 7 North, Range 67 West  
Weld County, Colorado**

Dear Mr. Lepore:

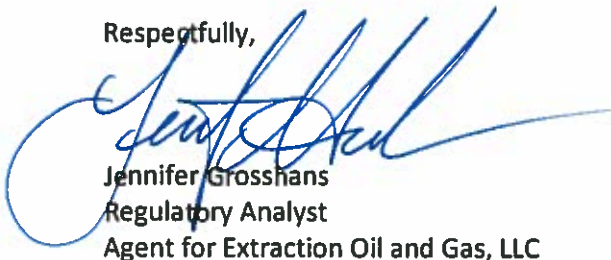
Extraction Oil and Gas, LLC (Extraction) is planning to drill the above referenced well in accordance with the provisions set out in COGCC Rule 318A.e. Extraction's proposed wellbore spacing unit consists of:

N½ of Section 28, Township 7 North, Range 67 West  
NW¼, W½NE¼ of Section 27, Township 7 North, Range 67 West  
Containing 560 acres more or less

Extraction is not the only owner within the proposed wellbore spacing unit and has provided notice to the remaining owners within this spacing unit, as required by COGCC Rule 318A.e.(6). Copies of the required notification letters are on file at Extraction's office. The required thirty (30) day notice period has elapsed absent the receipt by Extraction of any objection to their proposal by the owners within the proposed spacing unit for the subject well.

Enclosed is the Proposed Spacing Unit Plat to assist in your review and approval of Extraction's proposed Application for Permit to Drill (APD) for the Nelson Farm 6 well. Many thanks for your attention to this matter.

Respectfully,



Jennifer Grosshans  
Regulatory Analyst  
Agent for Extraction Oil and Gas, LLC

:jg

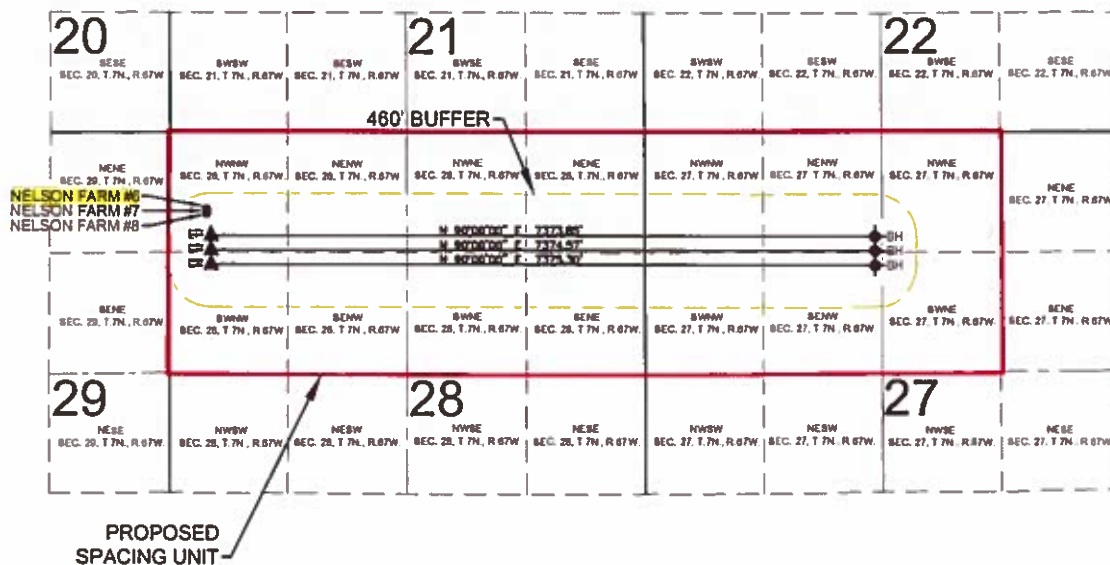
Enclosure: Proposed Spacing Unit Plat

*We are what we repeatedly do. Excellence, then, is not an act, but a habit.*

*-Aristotle*

# PROPOSED 318A.e. SPACING UNIT

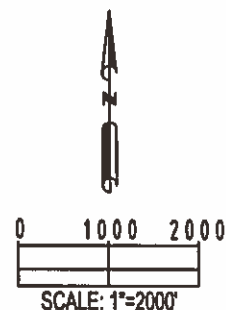
## SECTION 28 & 27, TOWNSHIP 7 NORTH, RANGE 67 WEST, 6TH P.M.



WELL NAME	SURFACE FOOTAGES		SURFACE LOCATION (NAD83)	LANDING POINT LOCATION (NAD83)	BOTTOM HOLE LOCATION (NAD83)
NELSON FARM #6	844' FNL	409' FWL	LATITUDE= 40.550224° LONGITUDE= 104.906395°	LATITUDE= 40.549412° LONGITUDE= 104.906220°	LATITUDE= 40.549274° LONGITUDE= 104.879686°
NELSON FARM #7	872' FNL	409' FWL	LATITUDE= 40.550148° LONGITUDE= 104.906396°	LATITUDE= 40.548973° LONGITUDE= 104.906226°	LATITUDE= 40.548834° LONGITUDE= 104.879690°
NELSON FARM #8	900' FNL	409' FWL	LATITUDE= 40.550071° LONGITUDE= 104.906397°	LATITUDE= 40.548534° LONGITUDE= 104.906232°	LATITUDE= 40.548395° LONGITUDE= 104.879693°

### LEGEND

- = PROPOSED WELL
- ▲ = LANDING POINT
- ✦ = BOTTOM HOLE
- LP = LANDING POINT
- BH = BOTTOM HOLE



SHEET 3 OF 5

<b>PREPARED BY:</b>  <b>PFS</b> Petroleum Field Services, LLC 7536 Hilltop Circle Denver, CO 80221	<b>FIELD DATE:</b> 04-25-14	<b>SURFACE LOCATION:</b> NW 1/4 NW 1/4, SEC. 28, T7N, R67W, 6TH P.M.
	<b>DRAWING DATE:</b> 05-13-14	<b>WELD COUNTY, COLORADO</b>
<b>BY:</b> JLD	<b>CHECKED:</b> MDC	