



Kerr-McGee Oil & Gas Onshore LP

A subsidiary of Anadarko Petroleum Corporation

1099 18th Street
Denver, CO 80202
720-929-6000

June 10, 2014

Department of Natural Resources
Oil and Gas Conservation Commission
The Chancery Building
1120 Lincoln St., Suite 801
Denver, CO 80203

Re: **30 Day Certification Letter - 318A.e**
RANCHVIEW 3C-11HZ
Township 1 North, Range 68 West, Section 14: SE/4SW/4
Unit Spacing: 01N-68W-11 SW/4
01N-68W-14 W/2
01N-68W-23 N/2NW/4
Weld County, Colorado

Ladies/Gentlemen:

Kerr-McGee Oil and Gas Onshore LP ("KMG") hereby certifies to the Director that a thirty (30) day notice has been given by certified mail to all owners in the proposed wellbore spacing unit. We have not received any objections to such well location, proposed spacing unit, or additional producing formation. KMG hereby requests the Director to approve the boundary well.

If you have any questions or issues regarding this permit, please contact Cheryl Light at (720) 929-6461.

Very truly yours,

Kerr-McGee Oil and Gas Onshore LP

A handwritten signature in blue ink that reads "RPowers".

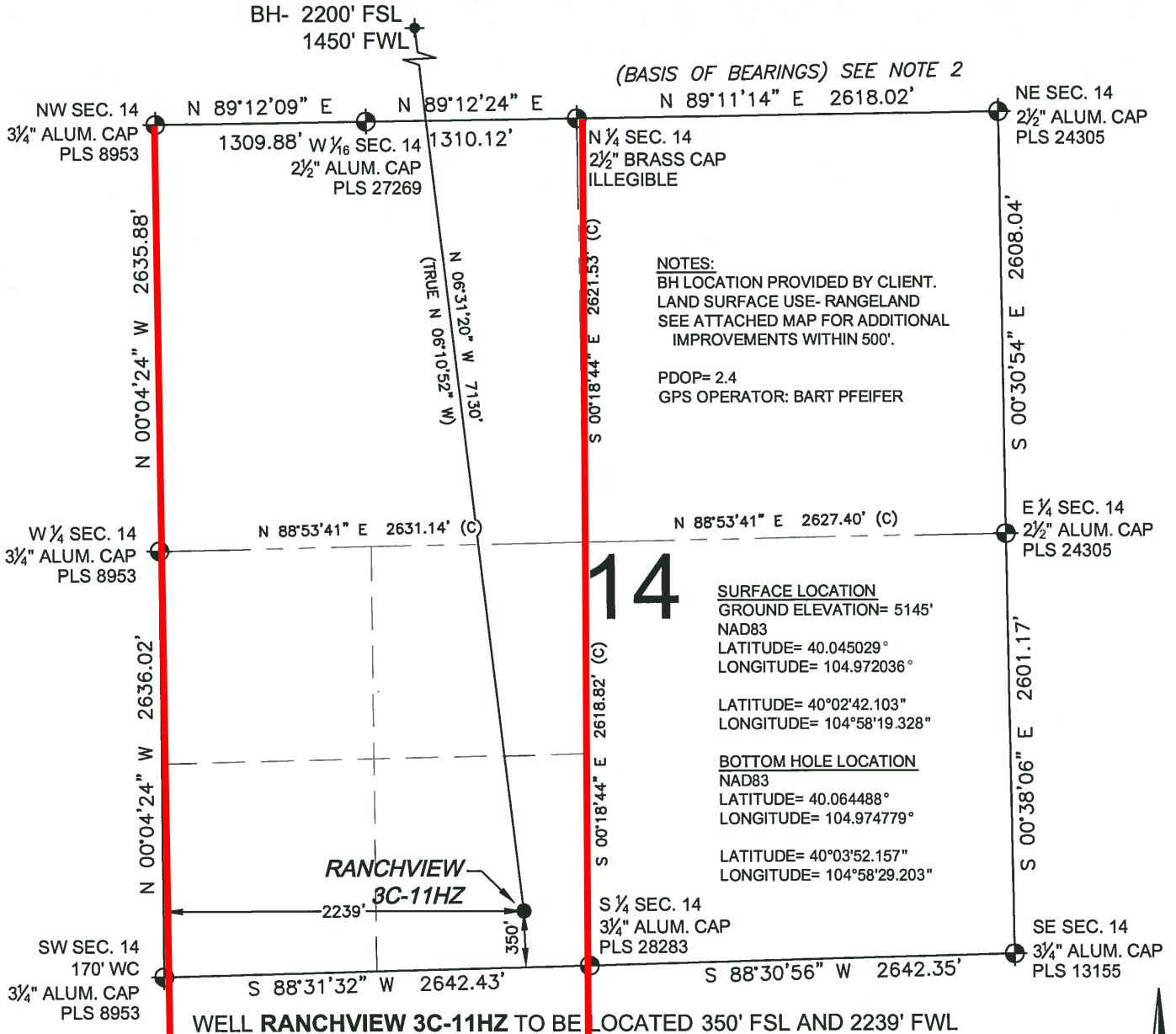
Ronett Powers
Regulatory Analyst II

Enclosure

PROPOSED SPACING UNIT

WELL LOCATION CERTIFICATE: RANCHVIEW 3C-11HZ

SECTION 14, TOWNSHIP 1 NORTH, RANGE 68 WEST, 6TH P.M.



(BASIS OF BEARINGS) SEE NOTE 2

NOTES:
 BH LOCATION PROVIDED BY CLIENT.
 LAND SURFACE USE- RANGELAND
 SEE ATTACHED MAP FOR ADDITIONAL
 IMPROVEMENTS WITHIN 500'.

PDOP= 2.4
 GPS OPERATOR: BART PFEIFER

SURFACE LOCATION
 GROUND ELEVATION= 5145'
 NAD83
 LATITUDE= 40.045029°
 LONGITUDE= 104.972036°

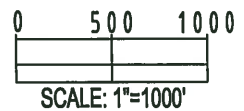
BOTTOM HOLE LOCATION
 NAD83
 LATITUDE= 40.064488°
 LONGITUDE= 104.974779°

LATITUDE= 40°03'52.157"
 LONGITUDE= 104°58'29.203"

LEGEND

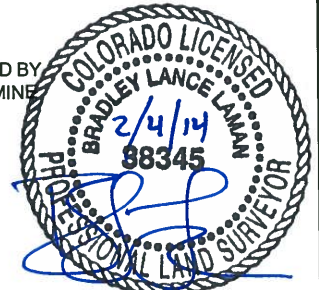
- ⊕ = EXISTING MONUMENT
- = PROPOSED WELL
- BH = BOTTOM HOLE
- ◆ = EXISTING WELL
- ◆ = BOTTOM HOLE

I, BRADLEY L. LAMAN, A LICENSED PROFESSIONAL LAND SURVEYOR IN THE STATE OF COLORADO DO HEREBY CERTIFY TO KERR-MCGEE OIL & GAS ONSHORE LP, THAT THE SURVEY AND WELL LOCATION CERTIFICATE SHOWN HEREON WERE DONE BY ME OR UNDER MY DIRECT SUPERVISION AND THAT THE DRAWING SHOWN HEREON ACCURATELY DEPICTS THE PROPOSED LOCATION OF THE WELL. THIS CERTIFICATE DOES NOT REPRESENT A LAND SURVEY PLAT OR IMPROVEMENT SURVEY PLAT AS DEFINED BY C.R.S. 38-51-102 AND CANNOT BE RELIED UPON TO DETERMINE OWNERSHIP.



- NOTES:**
- THIS FIELD SURVEY CONFORMS TO THE MINIMUM STANDARDS SET BY THE C.O.G.C.C., RULE NO. 215
 - BEARINGS AND DISTANCE SHOWN HEREON ARE GRID AND BASED ON THE COLORADO STATE PLANE COORDINATE SYSTEM, NAD 83/2011 BETWEEN MONUMENTS AS LABELED HEREON AND ELEVATIONS SHOWN ARE NAVD 88, AS DERIVED BY GPS OBSERVATIONS.
 - GRID DISTANCES ARE SHOWN, AS MEASURED IN THE FIELD, WITH TIES TO WELLS MEASURED PERPENDICULAR TO SECTION LINES.

BRADLEY L. LAMAN, PLS 38345
 COLORADO LICENSED PROFESSIONAL LAND SURVEYOR
 FOR AND ON BEHALF OF P.F.S., LLC



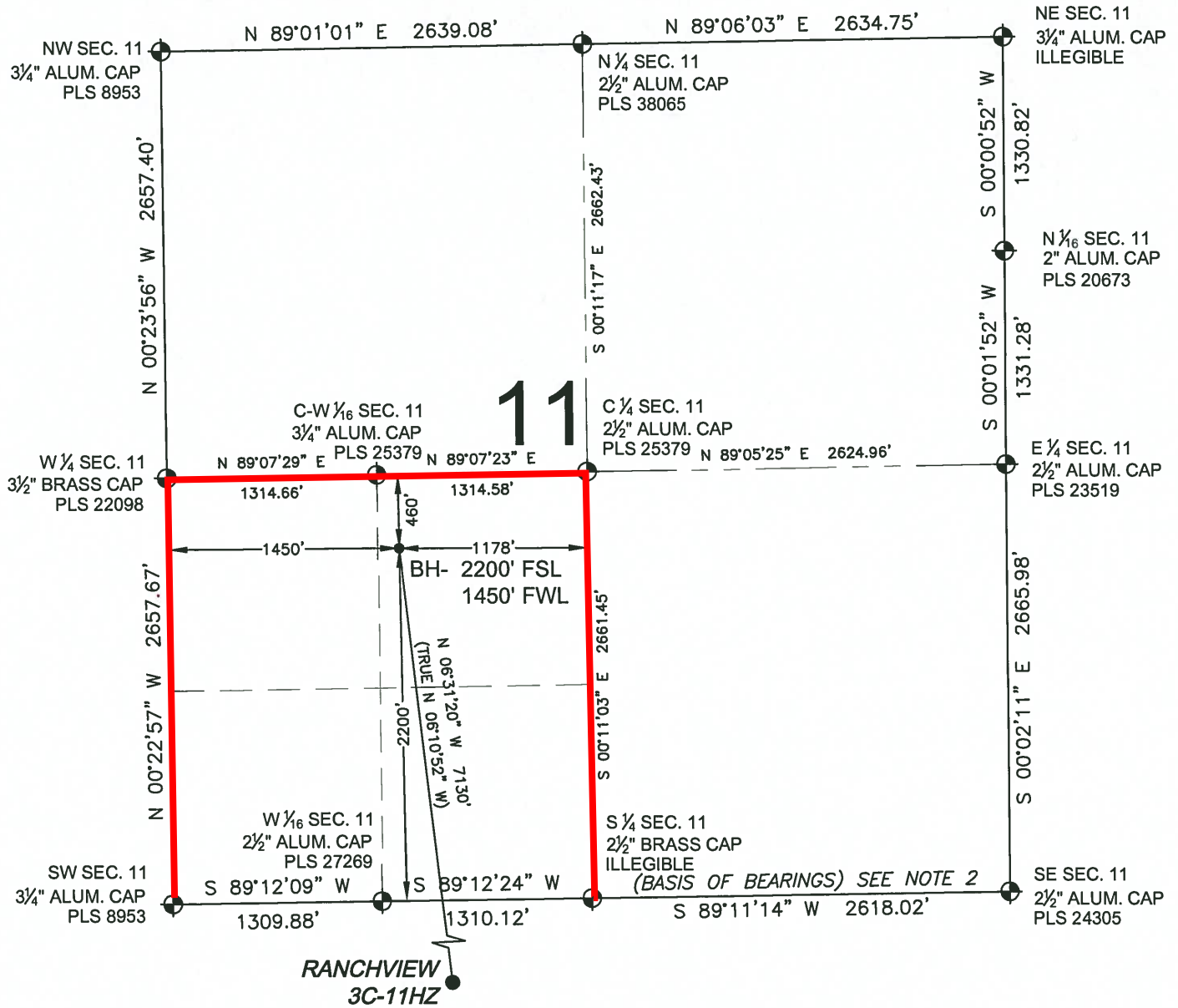
SHEET 1 OF 2

PREPARED BY: Petroleum Field Services, LLC 7535 Hilltop Circle Denver, CO 80221	FIELD DATE: 01-22-14 DRAWING DATE: 01-29-14 BY: SMF CHECKED: SMD	SURFACE LOCATION: SE 1/4 SW 1/4, SEC. 14, T1N, R68W, 6TH P.M. WELD COUNTY, COLORADO
--	---	--

NOTICE: ACCORDING TO COLORADO LAW YOU MUST COMMENCE ANY LEGAL ACTION BASED UPON ANY DEFECT IN THIS SURVEY WITHIN THREE YEARS AFTER YOU FIRST DISCOVER SUCH DEFECT. IN NO EVENT MAY ANY ACTION BASED UPON ANY DEFECT IN THIS SURVEY BE COMMENCED MORE THAN TEN YEARS FROM THIS SAID DATE OF THIS CERTIFICATION SHOWN HEREON.

WELL LOCATION CERTIFICATE: RANCHVIEW 3C-11HZ

SECTION 11, TOWNSHIP 1 NORTH, RANGE 68 WEST, 6TH P.M.



LEGEND

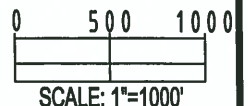
- ⊕ = EXISTING MONUMENT
- ⬤ = PROPOSED WELL
- ⬥ = EXISTING WELL
- BH = BOTTOM HOLE
- ⬥ = BOTTOM HOLE

NOTES:

1. THIS FIELD SURVEY CONFORMS TO THE MINIMUM STANDARDS SET BY THE C.O.G.C.C., RULE NO. 215
2. BEARINGS AND DISTANCE SHOWN HEREON ARE GRID AND BASED ON THE COLORADO STATE PLANE COORDINATE SYSTEM, NAD 83/2011 BETWEEN MONUMENTS AS LABELED HEREON AND ELEVATIONS SHOWN ARE NAVD 88, AS DERIVED BY GPS OBSERVATIONS.
3. GRID DISTANCES ARE SHOWN, AS MEASURED IN THE FIELD, WITH TIES TO WELLS MEASURED PERPENDICULAR TO SECTION LINES.



BRADLEY L. LAMAN, PLS 38345
 COLORADO LICENSED PROFESSIONAL LAND SURVEYOR
 FOR AND ON BEHALF OF P.F.S., LLC



SHEET 2 OF 2

PREPARED BY: Petroleum Field Services, LLC. 7535 Hilltop Circle Denver, CO 80221	FIELD DATE: 01-22-14	SURFACE LOCATION: SE 1/4 SW 1/4,
	DRAWING DATE: 01-29-14	SEC. 14, T1N, R68W, 6TH P.M.
BY: SMF	CHECKED: SMD	WELD COUNTY, COLORADO

NOTICE: ACCORDING TO COLORADO LAW YOU MUST COMMENCE ANY LEGAL ACTION BASED UPON ANY DEFECT IN THIS SURVEY WITHIN THREE YEARS AFTER YOU FIRST DISCOVER SUCH DEFECT. IN NO EVENT MAY ANY ACTION BASED UPON ANY DEFECT IN THIS SURVEY BE COMMENCED MORE THAN TEN YEARS FROM THIS SAID DATE OF THIS CERTIFICATION SHOWN HEREON.