

# Synergy Resources

Well Name: **SRC Gies T-15-22CHZ**

Surface Location: SRC Gies Pad Sec.15-T7N-R65W

North American Datum 1983 , US State Plane 1983 , Colorado Northern Zone

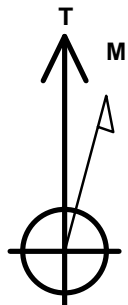
Ground Elevation: 4838.0

+N/-S	+E/-W	Northing	Easting	Latitude	Longitude	Slot
0.0	0.0	1450673.52	3237898.79	40.567345	-104.643690	

RKB - 13' WELL @ 4851.0ft (RKB - 13')

## WELLBORE TARGET DETAILS

Name	TVD	+N/-S	+E/-W	Shape
SHL 272'FSL & 1107'FEL, Sec.15	1.0	0.0	0.0	Point
BHL 470'FSL & 1644'FEL, Sec.22	7510.0	-4516.5	-546.3	Point
Landing Pt. 460'FNL & 1661'FEL, Sec.22	7510.0	-714.8	-560.7	Point



Azimuths to True North  
Magnetic North: 8.42°

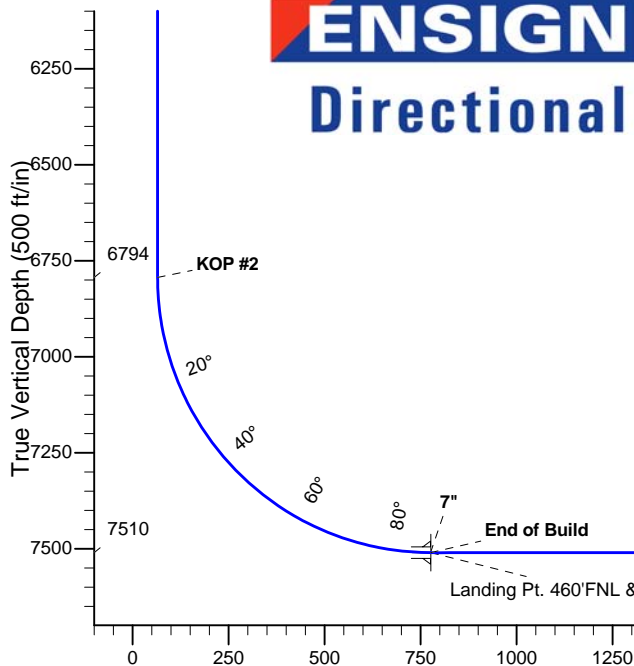
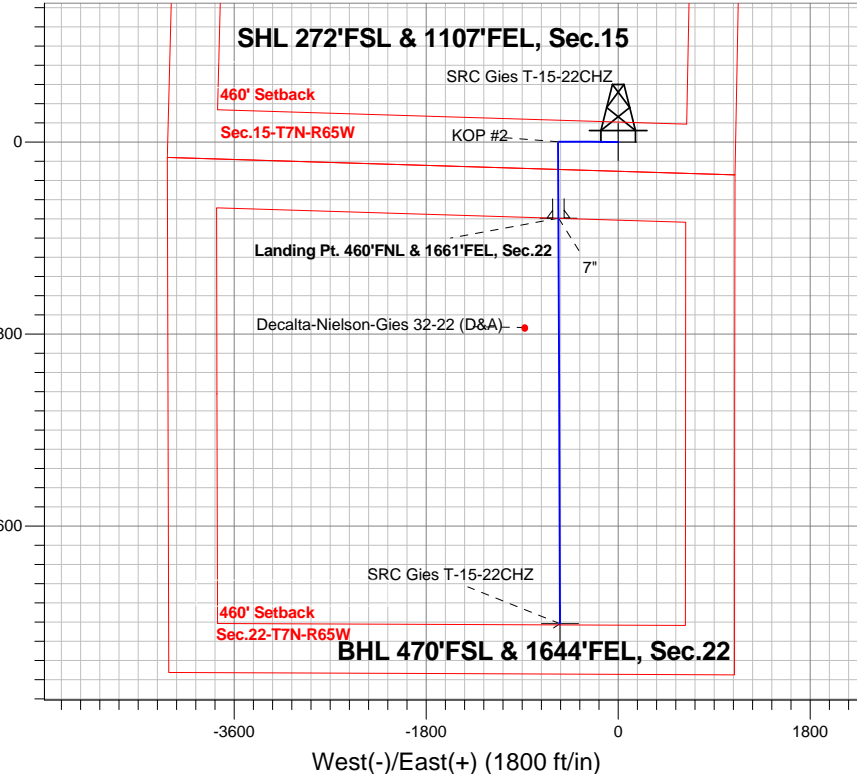
Magnetic Field  
Strength: 52926.0snT  
Dip Angle: 67.10°  
Date: 5/8/2014  
Model: IGRF2010

SRC Gies Pad Sec.15-T7N-R65W  
SRC Gies T-15-22CHZ  
Plan #1 (5-7-14)  
11:10, May 14 2014

## ANNOTATIONS

TVD	MD	Annotation
600.0	600.0	KOP #1
6793.8	6824.3	KOP #2
7510.0	7949.3	End of Build

South(-)/North(+) (1800 ft/in)



## SECTION DETAILS

Sec	MD	Inc	Azi	TVD	+N/-S	+E/-W	DLeg	TFace	VSec	Target
1	0.0	0.00	0.00	0.0	0.0	0.0	0.00	0.00	0.0	
2	600.0	0.00	0.00	600.0	0.0	0.0	0.00	0.00	0.0	
3	916.2	6.32	270.22	915.6	0.1	-17.4	2.00	270.22	2.0	
4	5714.3	6.32	270.22	5684.4	2.1	-546.0	0.00	0.00	63.4	
5	6030.5	0.00	0.00	6000.0	2.2	-563.4	2.00	180.00	65.5	
6	6824.3	0.00	0.00	6793.8	2.2	-563.4	0.00	0.00	65.5	
7	7949.3	90.00	179.78	7510.0	-714.0	-560.7	8.00	179.78	776.2	
8	7950.1	90.00	179.78	7510.0	-714.8	-560.7	0.00	0.00	776.9	Landing Pt. 460'FNL & 1661'FEL, Sec.22
9	11751.8	90.00	179.78	7510.0	-4516.5	-546.3	0.00	0.00	4549.4	BHL 470'FSL & 1644'FEL, Sec.22

**BHL 470'FSL & 1644'FEL, Sec.22**

Vertical Section at 186.90° (500 ft/in)



## **Synergy Resources**

**SEC.15-T7N-R65W**

**SRC Gies Pad Sec.15-T7N-R65W**

**SRC Gies T-15-22CHZ**

**Wellbore #1**

**Plan: Plan #1 (5-7-14)**

## **Standard Planning Report**

**14 May, 2014**

<b>Database:</b>	landmark	<b>Local Co-ordinate Reference:</b>	Well SRC Gies T-15-22CHZ
<b>Company:</b>	Synergy Resources	<b>TVD Reference:</b>	WELL @ 4851.0ft (RKB - 13')
<b>Project:</b>	SEC.15-T7N-R65W	<b>MD Reference:</b>	WELL @ 4851.0ft (RKB - 13')
<b>Site:</b>	SRC Gies Pad Sec.15-T7N-R65W	<b>North Reference:</b>	True
<b>Well:</b>	SRC Gies T-15-22CHZ	<b>Survey Calculation Method:</b>	Minimum Curvature
<b>Wellbore:</b>	Wellbore #1		
<b>Design:</b>	Plan #1 (5-7-14)		

<b>Project</b>	SEC.15-T7N-R65W, Weld County, CO		
<b>Map System:</b>	US State Plane 1983	<b>System Datum:</b>	Mean Sea Level
<b>Geo Datum:</b>	North American Datum 1983		Using Well Reference Point
<b>Map Zone:</b>	Colorado Northern Zone		Using geodetic scale factor

Site		SRC Gies Pad Sec.15-T7N-R65W			
Site Position:		Northing:	1,450,674.24 ft	Latitude:	40.567348
From:	Lat/Long	Easting:	3,237,858.77 ft	Longitude:	-104.643834
Position Uncertainty:	0.0 ft	Slot Radius:	"	Grid Convergence:	0.55 °

Well	SRC Gies T-15-22CHZ					
Well Position	+N/-S	-1.1 ft	Northing:	1,450,673.52 ft	Latitude:	40.567345
	+E/-W	40.0 ft	Easting:	3,237,898.79 ft	Longitude:	-104.643690
Position Uncertainty		0.0 ft	Wellhead Elevation:	ft	Ground Level:	4,838.0 ft

Wellbore					
Wellbore #1					
Magnetics	Model Name	Sample Date	Declination (°)	Dip Angle (°)	Field Strength (nT)
	IGRF2010	5/8/2014	8.42	67.10	52,926

Design		Plan #1 (5-7-14)		
Audit Notes:				
Version:	Phase:	PROTOTYPE	Tie On Depth:	0.0
Vertical Section:	Depth From (TVD) (ft)	+N/-S (ft)	+E/-W (ft)	Direction (°)
	0.0	0.0	0.0	186.90

Plan Sections										
Measured Depth (ft)	Inclination (°)	Azimuth (°)	Vertical Depth (ft)	+N/-S (ft)	+E/-W (ft)	Dogleg Rate (°/100ft)	Build Rate (°/100ft)	Turn Rate (°/100ft)	TFO (°)	Target
0.0	0.00	0.00	0.0	0.0	0.0	0.00	0.00	0.00	0.00	
600.0	0.00	0.00	600.0	0.0	0.0	0.00	0.00	0.00	0.00	
916.2	6.32	270.22	915.6	0.1	-17.4	2.00	2.00	0.00	270.22	
5,714.3	6.32	270.22	5,684.4	2.1	-546.0	0.00	0.00	0.00	0.00	
6,030.5	0.00	0.00	6,000.0	2.2	-563.4	2.00	-2.00	0.00	180.00	
6,824.3	0.00	0.00	6,793.8	2.2	-563.4	0.00	0.00	0.00	0.00	
7,949.3	90.00	179.78	7,510.0	-714.0	-560.7	8.00	8.00	0.00	179.78	
7,950.1	90.00	179.78	7,510.0	-714.8	-560.7	0.00	0.00	0.00	0.00	Landing Pt. 460'FN
11,751.8	90.00	179.78	7,510.0	-4,516.5	-546.3	0.00	0.00	0.00	0.00	BHL 470'FSL & 164'

<b>Database:</b>	landmark	<b>Local Co-ordinate Reference:</b>	Well SRC Gies T-15-22CHZ
<b>Company:</b>	Synergy Resources	<b>TVD Reference:</b>	WELL @ 4851.0ft (RKB - 13')
<b>Project:</b>	SEC.15-T7N-R65W	<b>MD Reference:</b>	WELL @ 4851.0ft (RKB - 13')
<b>Site:</b>	SRC Gies Pad Sec.15-T7N-R65W	<b>North Reference:</b>	True
<b>Well:</b>	SRC Gies T-15-22CHZ	<b>Survey Calculation Method:</b>	Minimum Curvature
<b>Wellbore:</b>	Wellbore #1		
<b>Design:</b>	Plan #1 (5-7-14)		

Planned Survey									
Measured Depth (ft)	Inclination (°)	Azimuth (°)	Vertical Depth (ft)	+N/-S (ft)	+E/-W (ft)	Vertical Section (ft)	Dogleg Rate (°/100ft)	Build Rate (°/100ft)	Turn Rate (°/100ft)
0.0	0.00	0.00	0.0	0.0	0.0	0.0	0.00	0.00	0.00
1.0	0.00	0.00	1.0	0.0	0.0	0.0	0.00	0.00	0.00
<b>SHL 272'FSL &amp; 1107'FEL, Sec.15</b>									
100.0	0.00	0.00	100.0	0.0	0.0	0.0	0.00	0.00	0.00
200.0	0.00	0.00	200.0	0.0	0.0	0.0	0.00	0.00	0.00
300.0	0.00	0.00	300.0	0.0	0.0	0.0	0.00	0.00	0.00
400.0	0.00	0.00	400.0	0.0	0.0	0.0	0.00	0.00	0.00
500.0	0.00	0.00	500.0	0.0	0.0	0.0	0.00	0.00	0.00
600.0	0.00	0.00	600.0	0.0	0.0	0.0	0.00	0.00	0.00
<b>KOP #1</b>									
700.0	2.00	270.22	700.0	0.0	-1.7	0.2	2.00	2.00	0.00
800.0	4.00	270.22	799.8	0.0	-7.0	0.8	2.00	2.00	0.00
900.0	6.00	270.22	899.5	0.1	-15.7	1.8	2.00	2.00	0.00
916.2	6.32	270.22	915.6	0.1	-17.4	2.0	2.00	2.00	0.00
1,000.0	6.32	270.22	998.8	0.1	-26.7	3.1	0.00	0.00	0.00
1,100.0	6.32	270.22	1,098.2	0.1	-37.7	4.4	0.00	0.00	0.00
1,200.0	6.32	270.22	1,197.6	0.2	-48.7	5.7	0.00	0.00	0.00
1,300.0	6.32	270.22	1,297.0	0.2	-59.7	6.9	0.00	0.00	0.00
1,400.0	6.32	270.22	1,396.4	0.3	-70.7	8.2	0.00	0.00	0.00
1,500.0	6.32	270.22	1,495.8	0.3	-81.7	9.5	0.00	0.00	0.00
1,600.0	6.32	270.22	1,595.2	0.4	-92.8	10.8	0.00	0.00	0.00
1,700.0	6.32	270.22	1,694.6	0.4	-103.8	12.1	0.00	0.00	0.00
1,800.0	6.32	270.22	1,794.0	0.4	-114.8	13.3	0.00	0.00	0.00
1,900.0	6.32	270.22	1,893.4	0.5	-125.8	14.6	0.00	0.00	0.00
2,000.0	6.32	270.22	1,992.8	0.5	-136.8	15.9	0.00	0.00	0.00
2,100.0	6.32	270.22	2,092.2	0.6	-147.8	17.2	0.00	0.00	0.00
2,200.0	6.32	270.22	2,191.5	0.6	-158.8	18.5	0.00	0.00	0.00
2,300.0	6.32	270.22	2,290.9	0.7	-169.9	19.7	0.00	0.00	0.00
2,400.0	6.32	270.22	2,390.3	0.7	-180.9	21.0	0.00	0.00	0.00
2,500.0	6.32	270.22	2,489.7	0.7	-191.9	22.3	0.00	0.00	0.00
2,600.0	6.32	270.22	2,589.1	0.8	-202.9	23.6	0.00	0.00	0.00
2,700.0	6.32	270.22	2,688.5	0.8	-213.9	24.9	0.00	0.00	0.00
2,800.0	6.32	270.22	2,787.9	0.9	-224.9	26.1	0.00	0.00	0.00
2,900.0	6.32	270.22	2,887.3	0.9	-236.0	27.4	0.00	0.00	0.00
3,000.0	6.32	270.22	2,986.7	1.0	-247.0	28.7	0.00	0.00	0.00
3,100.0	6.32	270.22	3,086.1	1.0	-258.0	30.0	0.00	0.00	0.00
3,200.0	6.32	270.22	3,185.5	1.1	-269.0	31.3	0.00	0.00	0.00
3,300.0	6.32	270.22	3,284.9	1.1	-280.0	32.5	0.00	0.00	0.00
3,400.0	6.32	270.22	3,384.2	1.1	-291.0	33.8	0.00	0.00	0.00
3,500.0	6.32	270.22	3,483.6	1.2	-302.1	35.1	0.00	0.00	0.00
3,600.0	6.32	270.22	3,583.0	1.2	-313.1	36.4	0.00	0.00	0.00
3,700.0	6.32	270.22	3,682.4	1.3	-324.1	37.7	0.00	0.00	0.00
3,800.0	6.32	270.22	3,781.8	1.3	-335.1	38.9	0.00	0.00	0.00
3,900.0	6.32	270.22	3,881.2	1.4	-346.1	40.2	0.00	0.00	0.00
4,000.0	6.32	270.22	3,980.6	1.4	-357.1	41.5	0.00	0.00	0.00
4,100.0	6.32	270.22	4,080.0	1.4	-368.1	42.8	0.00	0.00	0.00
4,200.0	6.32	270.22	4,179.4	1.5	-379.2	44.1	0.00	0.00	0.00
4,300.0	6.32	270.22	4,278.8	1.5	-390.2	45.3	0.00	0.00	0.00
4,400.0	6.32	270.22	4,378.2	1.6	-401.2	46.6	0.00	0.00	0.00
4,500.0	6.32	270.22	4,477.5	1.6	-412.2	47.9	0.00	0.00	0.00
4,600.0	6.32	270.22	4,576.9	1.7	-423.2	49.2	0.00	0.00	0.00
4,700.0	6.32	270.22	4,676.3	1.7	-434.2	50.5	0.00	0.00	0.00
4,800.0	6.32	270.22	4,775.7	1.7	-445.3	51.7	0.00	0.00	0.00
4,900.0	6.32	270.22	4,875.1	1.8	-456.3	53.0	0.00	0.00	0.00

<b>Database:</b>	landmark	<b>Local Co-ordinate Reference:</b>	Well SRC Gies T-15-22CHZ
<b>Company:</b>	Synergy Resources	<b>TVD Reference:</b>	WELL @ 4851.0ft (RKB - 13')
<b>Project:</b>	SEC.15-T7N-R65W	<b>MD Reference:</b>	WELL @ 4851.0ft (RKB - 13')
<b>Site:</b>	SRC Gies Pad Sec.15-T7N-R65W	<b>North Reference:</b>	True
<b>Well:</b>	SRC Gies T-15-22CHZ	<b>Survey Calculation Method:</b>	Minimum Curvature
<b>Wellbore:</b>	Wellbore #1		
<b>Design:</b>	Plan #1 (5-7-14)		

Planned Survey										
Measured Depth (ft)	Inclination (°)	Azimuth (°)	Vertical Depth (ft)	+N/-S (ft)	+E/-W (ft)	Vertical Section (ft)	Dogleg Rate (°/100ft)	Build Rate (°/100ft)	Turn Rate (°/100ft)	
5,000.0	6.32	270.22	4,974.5	1.8	-467.3	54.3	0.00	0.00	0.00	
5,100.0	6.32	270.22	5,073.9	1.9	-478.3	55.6	0.00	0.00	0.00	
5,200.0	6.32	270.22	5,173.3	1.9	-489.3	56.9	0.00	0.00	0.00	
5,300.0	6.32	270.22	5,272.7	2.0	-500.3	58.1	0.00	0.00	0.00	
5,400.0	6.32	270.22	5,372.1	2.0	-511.3	59.4	0.00	0.00	0.00	
5,500.0	6.32	270.22	5,471.5	2.0	-522.4	60.7	0.00	0.00	0.00	
5,600.0	6.32	270.22	5,570.9	2.1	-533.4	62.0	0.00	0.00	0.00	
5,700.0	6.32	270.22	5,670.2	2.1	-544.4	63.3	0.00	0.00	0.00	
5,714.3	6.32	270.22	5,684.4	2.1	-546.0	63.4	0.00	0.00	0.00	
5,800.0	4.61	270.22	5,769.8	2.2	-554.1	64.4	2.00	-2.00	0.00	
5,900.0	2.61	270.22	5,869.6	2.2	-560.4	65.1	2.00	-2.00	0.00	
6,000.0	0.61	270.22	5,969.5	2.2	-563.2	65.4	2.00	-2.00	0.00	
6,030.5	0.00	0.00	6,000.0	2.2	-563.4	65.5	2.00	-2.00	0.00	
6,100.0	0.00	0.00	6,069.5	2.2	-563.4	65.5	0.00	0.00	0.00	
6,200.0	0.00	0.00	6,169.5	2.2	-563.4	65.5	0.00	0.00	0.00	
6,300.0	0.00	0.00	6,269.5	2.2	-563.4	65.5	0.00	0.00	0.00	
6,400.0	0.00	0.00	6,369.5	2.2	-563.4	65.5	0.00	0.00	0.00	
6,500.0	0.00	0.00	6,469.5	2.2	-563.4	65.5	0.00	0.00	0.00	
6,600.0	0.00	0.00	6,569.5	2.2	-563.4	65.5	0.00	0.00	0.00	
6,700.0	0.00	0.00	6,669.5	2.2	-563.4	65.5	0.00	0.00	0.00	
6,800.0	0.00	0.00	6,769.5	2.2	-563.4	65.5	0.00	0.00	0.00	
6,824.3	0.00	0.00	6,793.8	2.2	-563.4	65.5	0.00	0.00	0.00	
KOP #2										
6,900.0	6.06	179.78	6,869.4	-1.8	-563.4	69.4	8.00	8.00	0.00	
7,000.0	14.06	179.78	6,967.8	-19.2	-563.3	86.7	8.00	8.00	0.00	
7,100.0	22.06	179.78	7,062.8	-50.2	-563.2	117.5	8.00	8.00	0.00	
7,200.0	30.06	179.78	7,152.5	-94.1	-563.0	161.0	8.00	8.00	0.00	
7,300.0	38.06	179.78	7,235.3	-150.1	-562.8	216.6	8.00	8.00	0.00	
7,400.0	46.06	179.78	7,309.5	-217.0	-562.6	283.0	8.00	8.00	0.00	
7,500.0	54.06	179.78	7,373.6	-293.6	-562.3	359.0	8.00	8.00	0.00	
7,600.0	62.06	179.78	7,426.5	-378.4	-562.0	443.1	8.00	8.00	0.00	
7,700.0	70.06	179.78	7,467.1	-469.7	-561.6	533.7	8.00	8.00	0.00	
7,800.0	78.06	179.78	7,494.5	-565.8	-561.2	629.1	8.00	8.00	0.00	
7,900.0	86.06	179.78	7,508.3	-664.7	-560.9	727.3	8.00	8.00	0.00	
7,949.3	90.00	179.78	7,510.0	-714.0	-560.7	776.2	8.00	8.00	0.00	
End of Build - 7"										
7,950.1	90.00	179.78	7,510.0	-714.8	-560.7	776.9	0.00	0.00	0.00	
Landing Pt. 460'FNL & 1661'FEL, Sec.22										
8,000.0	90.00	179.78	7,510.0	-764.7	-560.5	826.5	0.00	0.00	0.00	
8,100.0	90.00	179.78	7,510.0	-864.7	-560.1	925.7	0.00	0.00	0.00	
8,200.0	90.00	179.78	7,510.0	-964.7	-559.7	1,024.9	0.00	0.00	0.00	
8,300.0	90.00	179.78	7,510.0	-1,064.7	-559.4	1,124.2	0.00	0.00	0.00	
8,400.0	90.00	179.78	7,510.0	-1,164.7	-559.0	1,223.4	0.00	0.00	0.00	
8,500.0	90.00	179.78	7,510.0	-1,264.7	-558.6	1,322.6	0.00	0.00	0.00	
8,600.0	90.00	179.78	7,510.0	-1,364.7	-558.2	1,421.9	0.00	0.00	0.00	
8,700.0	90.00	179.78	7,510.0	-1,464.7	-557.8	1,521.1	0.00	0.00	0.00	
8,800.0	90.00	179.78	7,510.0	-1,564.7	-557.5	1,620.3	0.00	0.00	0.00	
8,900.0	90.00	179.78	7,510.0	-1,664.7	-557.1	1,719.5	0.00	0.00	0.00	
9,000.0	90.00	179.78	7,510.0	-1,764.7	-556.7	1,818.8	0.00	0.00	0.00	
9,100.0	90.00	179.78	7,510.0	-1,864.7	-556.3	1,918.0	0.00	0.00	0.00	
9,200.0	90.00	179.78	7,510.0	-1,964.7	-555.9	2,017.2	0.00	0.00	0.00	
9,300.0	90.00	179.78	7,510.0	-2,064.7	-555.6	2,116.5	0.00	0.00	0.00	
9,400.0	90.00	179.78	7,510.0	-2,164.7	-555.2	2,215.7	0.00	0.00	0.00	

<b>Database:</b>	landmark	<b>Local Co-ordinate Reference:</b>	Well SRC Gies T-15-22CHZ
<b>Company:</b>	Synergy Resources	<b>TVD Reference:</b>	WELL @ 4851.0ft (RKB - 13')
<b>Project:</b>	SEC.15-T7N-R65W	<b>MD Reference:</b>	WELL @ 4851.0ft (RKB - 13')
<b>Site:</b>	SRC Gies Pad Sec.15-T7N-R65W	<b>North Reference:</b>	True
<b>Well:</b>	SRC Gies T-15-22CHZ	<b>Survey Calculation Method:</b>	Minimum Curvature
<b>Wellbore:</b>	Wellbore #1		
<b>Design:</b>	Plan #1 (5-7-14)		

Planned Survey									
Measured Depth (ft)	Inclination (°)	Azimuth (°)	Vertical Depth (ft)	+N/-S (ft)	+E/-W (ft)	Vertical Section (ft)	Dogleg Rate (°/100ft)	Build Rate (°/100ft)	Turn Rate (°/100ft)
9,500.0	90.00	179.78	7,510.0	-2,264.7	-554.8	2,314.9	0.00	0.00	0.00
9,600.0	90.00	179.78	7,510.0	-2,364.7	-554.4	2,414.2	0.00	0.00	0.00
9,700.0	90.00	179.78	7,510.0	-2,464.7	-554.0	2,513.4	0.00	0.00	0.00
9,800.0	90.00	179.78	7,510.0	-2,564.7	-553.7	2,612.6	0.00	0.00	0.00
9,900.0	90.00	179.78	7,510.0	-2,664.7	-553.3	2,711.8	0.00	0.00	0.00
10,000.0	90.00	179.78	7,510.0	-2,764.7	-552.9	2,811.1	0.00	0.00	0.00
10,100.0	90.00	179.78	7,510.0	-2,864.7	-552.5	2,910.3	0.00	0.00	0.00
10,200.0	90.00	179.78	7,510.0	-2,964.7	-552.1	3,009.5	0.00	0.00	0.00
10,300.0	90.00	179.78	7,510.0	-3,064.7	-551.8	3,108.8	0.00	0.00	0.00
10,400.0	90.00	179.78	7,510.0	-3,164.7	-551.4	3,208.0	0.00	0.00	0.00
10,500.0	90.00	179.78	7,510.0	-3,264.7	-551.0	3,307.2	0.00	0.00	0.00
10,600.0	90.00	179.78	7,510.0	-3,364.7	-550.6	3,406.5	0.00	0.00	0.00
10,700.0	90.00	179.78	7,510.0	-3,464.7	-550.2	3,505.7	0.00	0.00	0.00
10,800.0	90.00	179.78	7,510.0	-3,564.7	-549.9	3,604.9	0.00	0.00	0.00
10,900.0	90.00	179.78	7,510.0	-3,664.7	-549.5	3,704.2	0.00	0.00	0.00
11,000.0	90.00	179.78	7,510.0	-3,764.7	-549.1	3,803.4	0.00	0.00	0.00
11,100.0	90.00	179.78	7,510.0	-3,864.7	-548.7	3,902.6	0.00	0.00	0.00
11,200.0	90.00	179.78	7,510.0	-3,964.7	-548.3	4,001.8	0.00	0.00	0.00
11,300.0	90.00	179.78	7,510.0	-4,064.7	-548.0	4,101.1	0.00	0.00	0.00
11,400.0	90.00	179.78	7,510.0	-4,164.7	-547.6	4,200.3	0.00	0.00	0.00
11,500.0	90.00	179.78	7,510.0	-4,264.7	-547.2	4,299.5	0.00	0.00	0.00
11,600.0	90.00	179.78	7,510.0	-4,364.7	-546.8	4,398.8	0.00	0.00	0.00
11,700.0	90.00	179.78	7,510.0	-4,464.7	-546.5	4,498.0	0.00	0.00	0.00
11,751.8	90.00	179.78	7,510.0	-4,516.5	-546.3	4,549.4	0.00	0.00	0.00
BHL 470'FSL & 1644'FEL, Sec.22									

Casing Points				
Measured Depth (ft)	Vertical Depth (ft)	Name	Casing Diameter (")	Hole Diameter (")
7,949.3	7,510.0	7"	7	7-1/2

Plan Annotations				
Measured Depth (ft)	Vertical Depth (ft)	Local Coordinates		Comment
		+N/-S (ft)	+E/-W (ft)	
600.0	600.0	0.0	0.0	KOP #1
6,824.3	6,793.8	2.2	-563.4	KOP #2
7,949.3	7,510.0	-714.0	-560.7	End of Build



## **Synergy Resources**

**SEC.15-T7N-R65W**

**SRC Gies Pad Sec.15-T7N-R65W**

**SRC Gies T-15-22CHZ**

**Wellbore #1**

**Plan #1 (5-7-14)**

## **Anticollision Report**

**14 May, 2014**

<b>Company:</b>	Synergy Resources	<b>Local Co-ordinate Reference:</b>	Well SRC Gies T-15-22CHZ
<b>Project:</b>	SEC.15-T7N-R65W	<b>TVD Reference:</b>	WELL @ 4851.0ft (RKB - 13')
<b>Reference Site:</b>	SRC Gies Pad Sec.15-T7N-R65W	<b>MD Reference:</b>	WELL @ 4851.0ft (RKB - 13')
<b>Site Error:</b>	0.0ft	<b>North Reference:</b>	True
<b>Reference Well:</b>	SRC Gies T-15-22CHZ	<b>Survey Calculation Method:</b>	Minimum Curvature
<b>Well Error:</b>	0.0ft	<b>Output errors are at</b>	2.00 sigma
<b>Reference Wellbore</b>	Wellbore #1	<b>Database:</b>	landmark
<b>Reference Design:</b>	Plan #1 (5-7-14)	<b>Offset TVD Reference:</b>	Offset Datum

<b>Reference</b>	Plan #1 (5-7-14)		
<b>Filter type:</b>	NO GLOBAL FILTER: Using user defined selection & filtering criteria		
<b>Interpolation Method:</b>	MD Interval 100.0ft	<b>Error Model:</b>	ISCSWA
<b>Depth Range:</b>	Unlimited	<b>Scan Method:</b>	Closest Approach 3D
<b>Results Limited by:</b>	Maximum center-center distance of 1,000.0ft	<b>Error Surface:</b>	Elliptical Conic
<b>Warning Levels Evaluated at:</b>	2.00 Sigma		

Survey Tool Program		Date	5/14/2014		
From (ft)	To (ft)	Survey (Wellbore)	Tool Name	Description	
0.0	11,751.4	Plan #1 (5-7-14) (Wellbore #1)	MWD	MWD - Standard	

Summary							
Site Name Offset Well - Wellbore - Design	Reference Measured Depth (ft)	Offset Measured Depth (ft)	Distance Between Centres (ft)	Distance Between Ellipses (ft)	Separation Factor	Warning	
Existing Wells Pad Sec.15-T7N-R65W							
Decalta-Nielson-Gies 32-22 (D&A) - Wellbore #1 - Wellb	8,972.6	7,492.0	320.9	133.9	1.716	CC, ES, SF	
SRC Gies Pad Sec.15-T7N-R65W							
SRC Gies 34-15-22CHZ - Wellbore #1 - Plan #1 (5-6-14)	166.3	167.3	40.0	39.5	76.206	CC	
SRC Gies 34-15-22CHZ - Wellbore #1 - Plan #1 (5-6-14)	200.0	201.0	40.0	39.3	59.169	ES	
SRC Gies 34-15-22CHZ - Wellbore #1 - Plan #1 (5-6-14)	11,751.8	11,810.0	439.8	263.1	2.489	SF	
SRC Gies 34-15-22NHZ - Wellbore #1 - Plan #1 (5-7-14)	400.0	400.0	20.0	18.4	12.716	CC, ES	
SRC Gies 34-15-22NHZ - Wellbore #1 - Plan #1 (5-7-14)	11,751.8	11,509.0	348.4	222.6	2.770	SF	
SRC Gies 44-15-22CHZ - Wellbore #1 - Plan #1 (5-7-14)	600.0	600.0	80.1	77.6	32.380	CC, ES	
SRC Gies 44-15-22CHZ - Wellbore #1 - Plan #1 (5-7-14)	11,751.8	11,700.2	879.6	703.5	4.995	SF	
SRC Gies 44-15-22NHZ - Wellbore #1 - Plan #1 (5-7-14)	600.0	600.0	99.8	97.3	40.359	CC, ES	
SRC Gies 44-15-22NHZ - Wellbore #1 - Plan #1 (5-7-14)	800.0	792.4	113.5	110.2	34.355	SF	
SRC Gies D-15-22CHZ - Wellbore #1 - Plan #1 (5-7-14)	600.0	600.0	40.0	37.6	16.192	CC, ES	
SRC Gies D-15-22CHZ - Wellbore #1 - Plan #1 (5-7-14)	11,751.8	11,711.6	439.8	263.7	2.498	SF	
SRC Gies D-15-22NHZ - Wellbore #1 - Plan #1 (5-7-14)	600.0	600.0	59.8	57.3	24.171	CC, ES	
SRC Gies D-15-22NHZ - Wellbore #1 - Plan #1 (5-7-14)	11,751.8	11,428.7	712.6	548.2	4.336	SF	
SRC Gies T-15-22NHZ - Wellbore #1 - Plan #1 (5-7-14)	600.0	600.0	20.0	17.5	8.096	CC, ES	
SRC Gies T-15-22NHZ - Wellbore #1 - Plan #1 (5-7-14)	11,751.8	11,461.9	348.3	227.6	2.884	SF	

Existing Wells Pad Sec.15-T7N-R65W - Decalta-Nielson-Gies 32-22 (D&A) - Wellbore #1 - Wellbore #1										Offset Site Error:		0.0 ft	
Survey Program: 7795-UNKNOWN										Offset Well Error:		0.0 ft	
Reference		Offset		Semi Major Axis		Distance							Warning
Measured Depth	Vertical Depth	Measured Depth	Vertical Depth	Reference	Offset	Highside Toolface	Offset Wellbore Centre		Between Centres	Between Ellipses	Minimum Separation	Separation Factor	
(ft)	(ft)	(ft)	(ft)	(ft)	(ft)	(°)	+N/-S (ft)	+E/-W (ft)	(ft)	(ft)	(ft)		
8,100.0	7,510.0	7,492.0	7,492.0	25.2	149.8	90.00	-1,738.5	-877.7	929.8	756.6	173.21	5.368	
8,200.0	7,510.0	7,492.0	7,492.0	26.5	149.8	90.00	-1,738.5	-877.7	836.6	662.0	174.60	4.792	
8,300.0	7,510.0	7,492.0	7,492.0	27.8	149.8	90.00	-1,738.5	-877.7	745.3	569.2	176.06	4.233	
8,400.0	7,510.0	7,492.0	7,492.0	29.3	149.8	90.00	-1,738.5	-877.7	656.4	478.8	177.58	3.697	
8,500.0	7,510.0	7,492.0	7,492.0	30.7	149.8	90.00	-1,738.5	-877.7	571.3	392.1	179.14	3.189	
8,600.0	7,510.0	7,492.0	7,492.0	32.3	149.8	90.00	-1,738.5	-877.7	491.8	311.0	180.75	2.721	
8,700.0	7,510.0	7,492.0	7,492.0	33.9	149.8	90.00	-1,738.5	-877.7	421.1	238.7	182.39	2.309	
8,800.0	7,510.0	7,492.0	7,492.0	35.5	149.8	90.00	-1,738.5	-877.7	364.4	180.3	184.06	1.980	
8,900.0	7,510.0	7,492.0	7,492.0	37.1	149.8	90.00	-1,738.5	-877.7	329.0	143.3	185.76	1.771	
8,972.6	7,510.0	7,492.0	7,492.0	38.3	149.8	90.00	-1,738.5	-877.7	320.9	133.9	187.00	1.716 CC, ES, SF	



<b>Company:</b>	Synergy Resources	<b>Local Co-ordinate Reference:</b>	Well SRC Gies T-15-22CHZ
<b>Project:</b>	SEC.15-T7N-R65W	<b>TVD Reference:</b>	WELL @ 4851.0ft (RKB - 13')
<b>Reference Site:</b>	SRC Gies Pad Sec.15-T7N-R65W	<b>MD Reference:</b>	WELL @ 4851.0ft (RKB - 13')
<b>Site Error:</b>	0.0ft	<b>North Reference:</b>	True
<b>Reference Well:</b>	SRC Gies T-15-22CHZ	<b>Survey Calculation Method:</b>	Minimum Curvature
<b>Well Error:</b>	0.0ft	<b>Output errors are at</b>	2.00 sigma
<b>Reference Wellbore</b>	Wellbore #1	<b>Database:</b>	landmark
<b>Reference Design:</b>	Plan #1 (5-7-14)	<b>Offset TVD Reference:</b>	Offset Datum

<b>Offset Design</b>												<b>Offset Site Error:</b>	0.0 ft
Existing Wells Pad Sec.15-T7N-R65W - Decalta-Nielson-Gies 32-22 (D&A) - Wellbore #1 - Wellbore #1												<b>Offset Well Error:</b>	0.0 ft
Survey Program: 7795-UNKNOWN													
Reference		Offset		Semi Major Axis			Distance						
Measured Depth (ft)	Vertical Depth (ft)	Measured Depth (ft)	Vertical Depth (ft)	Reference (ft)	Offset (ft)	Highside Toolface (°)	Offset Wellbore Centre +N/-S (ft)	+E/-W (ft)	Between Centres (ft)	Between Ellipses (ft)	Minimum Separation (ft)	Separation Factor	Warning
9,000.0	7,510.0	7,492.0	7,492.0	38.8	149.8	90.00	-1,738.5	-877.7	322.1	134.6	187.48	1.718	
9,100.0	7,510.0	7,492.0	7,492.0	40.5	149.8	90.00	-1,738.5	-877.7	345.3	156.1	189.21	1.825	
9,200.0	7,510.0	7,492.0	7,492.0	42.2	149.8	90.00	-1,738.5	-877.7	393.3	202.4	190.97	2.060	
9,300.0	7,510.0	7,492.0	7,492.0	43.9	149.8	90.00	-1,738.5	-877.7	458.5	265.7	192.73	2.379	
9,400.0	7,510.0	7,492.0	7,492.0	45.6	149.8	90.00	-1,738.5	-877.7	534.5	339.9	194.52	2.748	
9,500.0	7,510.0	7,492.0	7,492.0	47.4	149.8	90.00	-1,738.5	-877.7	617.4	421.0	196.31	3.145	
9,600.0	7,510.0	7,492.0	7,492.0	49.2	149.8	90.00	-1,738.5	-877.7	704.7	506.6	198.11	3.557	
9,700.0	7,510.0	7,492.0	7,492.0	50.9	149.8	90.00	-1,738.5	-877.7	795.0	595.1	199.92	3.977	
9,800.0	7,510.0	7,492.0	7,492.0	52.7	149.8	90.00	-1,738.5	-877.7	887.4	685.7	201.75	4.399	
9,900.0	7,510.0	7,492.0	7,492.0	54.5	149.8	90.00	-1,738.5	-877.7	981.3	777.8	203.57	4.821	

<b>Company:</b>	Synergy Resources	<b>Local Co-ordinate Reference:</b>	Well SRC Gies T-15-22CHZ
<b>Project:</b>	SEC.15-T7N-R65W	<b>TVD Reference:</b>	WELL @ 4851.0ft (RKB - 13')
<b>Reference Site:</b>	SRC Gies Pad Sec.15-T7N-R65W	<b>MD Reference:</b>	WELL @ 4851.0ft (RKB - 13')
<b>Site Error:</b>	0.0ft	<b>North Reference:</b>	True
<b>Reference Well:</b>	SRC Gies T-15-22CHZ	<b>Survey Calculation Method:</b>	Minimum Curvature
<b>Well Error:</b>	0.0ft	<b>Output errors are at</b>	2.00 sigma
<b>Reference Wellbore</b>	Wellbore #1	<b>Database:</b>	landmark
<b>Reference Design:</b>	Plan #1 (5-7-14)	<b>Offset TVD Reference:</b>	Offset Datum

Offset Design												Offset Site Error:	0.0ft
Survey Program: 0-MWD												Offset Well Error:	0.0ft
Reference		Offset		Semi Major Axis			Distance						
Measured Depth (ft)	Vertical Depth (ft)	Measured Depth (ft)	Vertical Depth (ft)	Reference (ft)	Offset (ft)	Highside Toolface (°)	Offset Wellbore Centre +N/-S (ft)	+E/-W (ft)	Between Centres (ft)	Between Ellipses (ft)	Minimum Separation (ft)	Separation Factor	Warning
0.0	0.0	1.0	1.0	0.0	0.0	-88.44	1.1	-40.0	40.0	40.0	0.00	N/A	
100.0	100.0	101.0	101.0	0.1	0.1	-88.44	1.1	-40.0	40.0	39.8	0.23	176.300	
166.3	166.3	167.3	167.3	0.3	0.3	-88.44	1.1	-40.0	40.0	39.5	0.53	76.206 CC	
200.0	200.0	201.0	201.0	0.3	0.3	-88.44	1.1	-40.0	40.0	39.3	0.68	59.169 ES	
300.0	300.0	300.0	300.0	0.6	0.6	-88.47	1.1	-41.8	41.8	40.7	1.11	37.504	
400.0	400.0	397.9	397.8	0.8	0.8	-88.54	1.2	-46.8	47.0	45.4	1.56	30.156	
500.0	500.0	495.8	495.3	1.0	1.0	-88.63	1.3	-55.3	55.6	53.5	2.03	27.397	
600.0	600.0	593.0	591.8	1.2	1.3	-88.72	1.5	-66.9	67.6	65.0	2.53	26.673	
700.0	700.0	690.1	687.8	1.4	1.6	1.00	1.7	-81.8	81.1	78.2	2.91	27.880	
800.0	799.8	789.5	785.8	1.7	2.0	0.99	2.0	-98.0	92.2	88.9	3.34	27.641	
900.0	899.5	889.2	884.2	1.9	2.3	1.02	2.2	-114.2	99.9	96.1	3.78	26.441	
1,000.0	998.8	989.1	982.7	2.1	2.7	1.06	2.5	-130.5	105.3	101.0	4.24	24.848	
1,100.0	1,098.2	1,088.9	1,081.2	2.4	3.1	1.11	2.7	-146.8	110.6	105.9	4.70	23.518	
1,200.0	1,197.6	1,188.8	1,179.7	2.7	3.5	1.15	3.0	-163.0	115.9	110.8	5.17	22.408	
1,300.0	1,297.0	1,288.6	1,278.3	3.0	3.8	1.18	3.2	-179.3	121.3	115.6	5.65	21.474	
1,400.0	1,396.4	1,388.5	1,376.8	3.2	4.2	1.22	3.4	-195.6	126.6	120.5	6.12	20.671	
1,500.0	1,495.8	1,488.4	1,475.3	3.5	4.6	1.25	3.7	-211.9	131.9	125.3	6.60	19.980	
1,600.0	1,595.2	1,588.2	1,573.8	3.8	5.0	1.27	3.9	-228.1	137.3	130.2	7.08	19.378	
1,700.0	1,694.6	1,688.1	1,672.3	4.1	5.4	1.30	4.2	-244.4	142.6	135.0	7.57	18.849	
1,800.0	1,794.0	1,787.9	1,770.9	4.4	5.8	1.32	4.4	-260.7	147.9	139.9	8.05	18.381	
1,900.0	1,893.4	1,887.8	1,869.4	4.7	6.1	1.35	4.7	-277.0	153.3	144.8	8.53	17.964	
2,000.0	1,992.8	1,987.6	1,967.9	5.0	6.5	1.37	4.9	-293.3	158.6	149.6	9.02	17.590	
2,100.0	2,092.2	2,087.5	2,066.4	5.3	6.9	1.39	5.2	-309.5	164.0	154.5	9.50	17.254	
2,200.0	2,191.5	2,187.4	2,164.9	5.6	7.3	1.41	5.4	-325.8	169.3	159.3	9.99	16.949	
2,300.0	2,290.9	2,287.2	2,263.5	5.9	7.7	1.42	5.7	-342.1	174.6	164.2	10.48	16.671	
2,400.0	2,390.3	2,387.1	2,362.0	6.2	8.1	1.44	5.9	-358.4	180.0	169.0	10.96	16.418	
2,500.0	2,489.7	2,486.9	2,460.5	6.5	8.4	1.45	6.2	-374.6	185.3	173.9	11.45	16.186	
2,600.0	2,589.1	2,586.8	2,559.0	6.8	8.8	1.47	6.4	-390.9	190.6	178.7	11.94	15.972	
2,700.0	2,688.5	2,686.6	2,657.6	7.1	9.2	1.48	6.7	-407.2	196.0	183.6	12.42	15.774	
2,800.0	2,787.9	2,786.5	2,756.1	7.4	9.6	1.50	6.9	-423.5	201.3	188.4	12.91	15.592	
2,900.0	2,887.3	2,886.4	2,854.6	7.8	10.0	1.51	7.1	-439.8	206.7	193.3	13.40	15.422	
3,000.0	2,986.7	2,986.2	2,953.1	8.1	10.4	1.52	7.4	-456.0	212.0	198.1	13.89	15.264	
3,100.0	3,086.1	3,086.1	3,051.6	8.4	10.8	1.53	7.6	-472.3	217.3	203.0	14.38	15.116	
3,200.0	3,185.5	3,185.9	3,150.2	8.7	11.1	1.54	7.9	-488.6	222.7	207.8	14.87	14.979	
3,300.0	3,284.9	3,285.8	3,248.7	9.0	11.5	1.55	8.1	-504.9	228.0	212.7	15.35	14.849	
3,400.0	3,384.2	3,385.6	3,347.2	9.3	11.9	1.56	8.4	-521.1	233.3	217.5	15.84	14.728	
3,500.0	3,483.6	3,485.5	3,445.7	9.6	12.3	1.57	8.6	-537.4	238.7	222.3	16.33	14.613	
3,600.0	3,583.0	3,585.4	3,544.2	9.9	12.7	1.58	8.9	-553.7	244.0	227.2	16.82	14.506	
3,700.0	3,682.4	3,685.2	3,642.8	10.2	13.1	1.59	9.1	-570.0	249.4	232.0	17.31	14.404	
3,800.0	3,781.8	3,785.1	3,741.3	10.5	13.5	1.60	9.4	-586.3	254.7	236.9	17.80	14.308	
3,900.0	3,881.2	3,884.9	3,839.8	10.8	13.8	1.60	9.6	-602.5	260.0	241.7	18.29	14.217	
4,000.0	3,980.6	3,984.8	3,938.3	11.1	14.2	1.61	9.9	-618.8	265.4	246.6	18.78	14.130	
4,100.0	4,080.0	4,084.6	4,036.9	11.4	14.6	1.62	10.1	-635.1	270.7	251.4	19.27	14.048	
4,200.0	4,179.4	4,184.5	4,135.4	11.7	15.0	1.62	10.4	-651.4	276.0	256.3	19.76	13.970	
4,300.0	4,278.8	4,284.4	4,233.9	12.0	15.4	1.63	10.6	-667.6	281.4	261.1	20.25	13.896	
4,400.0	4,378.2	4,384.2	4,332.4	12.3	15.8	1.64	10.8	-683.9	286.7	266.0	20.74	13.825	
4,500.0	4,477.5	4,484.1	4,430.9	12.7	16.2	1.64	11.1	-700.2	292.1	270.8	21.23	13.757	
4,600.0	4,576.9	4,583.9	4,529.5	13.0	16.6	1.65	11.3	-716.5	297.4	275.7	21.72	13.693	
4,700.0	4,676.3	4,683.8	4,628.0	13.3	16.9	1.65	11.6	-732.8	302.7	280.5	22.21	13.631	
4,800.0	4,775.7	4,783.6	4,726.5	13.6	17.3	1.66	11.8	-749.0	308.1	285.4	22.70	13.572	
4,900.0	4,875.1	4,883.5	4,825.0	13.9	17.7	1.67	12.1	-765.3	313.4	290.2	23.19	13.515	
5,000.0	4,974.5	4,983.4	4,923.5	14.2	18.1	1.67	12.3	-781.6	318.7	295.1	23.68	13.461	

CC - Min centre to center distance or convergent point, SF - min separation factor, ES - min ellipse separation

<b>Company:</b>	Synergy Resources	<b>Local Co-ordinate Reference:</b>	Well SRC Gies T-15-22CHZ
<b>Project:</b>	SEC.15-T7N-R65W	<b>TVD Reference:</b>	WELL @ 4851.0ft (RKB - 13')
<b>Reference Site:</b>	SRC Gies Pad Sec.15-T7N-R65W	<b>MD Reference:</b>	WELL @ 4851.0ft (RKB - 13')
<b>Site Error:</b>	0.0ft	<b>North Reference:</b>	True
<b>Reference Well:</b>	SRC Gies T-15-22CHZ	<b>Survey Calculation Method:</b>	Minimum Curvature
<b>Well Error:</b>	0.0ft	<b>Output errors are at</b>	2.00 sigma
<b>Reference Wellbore</b>	Wellbore #1	<b>Database:</b>	landmark
<b>Reference Design:</b>	Plan #1 (5-7-14)	<b>Offset TVD Reference:</b>	Offset Datum

Offset Design												Offset Site Error:	0.0 ft
Survey Program: 0-MWD												Offset Well Error:	0.0 ft
Reference		Offset		Semi Major Axis			Distance						
Measured Depth (ft)	Vertical Depth (ft)	Measured Depth (ft)	Vertical Depth (ft)	Reference (ft)	Offset (ft)	Highside Toolface (°)	Offset Wellbore Centre +N/-S (ft)	+E/-W (ft)	Between Centres (ft)	Between Ellipses (ft)	Minimum Separation (ft)	Separation Factor	Warning
5,100.0	5,073.9	5,083.2	5,022.1	14.5	18.5	1.68	12.6	-797.9	324.1	299.9	24.17	13.408	
5,200.0	5,173.3	5,183.1	5,120.6	14.8	18.9	1.68	12.8	-814.1	329.4	304.8	24.66	13.358	
5,300.0	5,272.7	5,282.9	5,219.1	15.1	19.3	1.68	13.1	-830.4	334.8	309.6	25.15	13.310	
5,400.0	5,372.1	5,382.8	5,317.6	15.4	19.6	1.69	13.3	-846.7	340.1	314.5	25.64	13.264	
5,500.0	5,471.5	5,482.6	5,416.2	15.7	20.0	1.69	13.6	-863.0	345.4	319.3	26.13	13.219	
5,600.0	5,570.9	5,582.5	5,514.7	16.0	20.4	1.70	13.8	-879.3	350.8	324.1	26.62	13.176	
5,700.0	5,670.2	5,682.4	5,613.2	16.3	20.8	1.70	14.1	-895.5	356.1	329.0	27.11	13.135	
5,800.0	5,769.8	5,782.1	5,711.6	16.6	21.2	1.70	14.3	-911.8	362.7	335.2	27.56	13.163	
5,900.0	5,869.6	5,881.6	5,809.8	16.8	21.6	1.69	14.5	-928.0	372.8	344.8	27.93	13.346	
6,000.0	5,969.5	5,980.7	5,907.5	16.9	22.0	1.67	14.8	-944.2	386.3	358.0	28.27	13.664	
6,100.0	6,069.5	6,079.4	6,004.9	17.1	22.3	-88.15	15.0	-960.3	402.4	373.8	28.68	14.032	
6,200.0	6,169.5	6,190.1	6,114.3	17.3	22.7	-88.19	15.3	-977.1	417.7	388.6	29.12	14.343	
6,300.0	6,269.5	6,306.6	6,230.1	17.4	23.0	-88.22	15.5	-990.5	429.2	399.6	29.54	14.530	
6,400.0	6,369.5	6,424.1	6,347.2	17.6	23.2	-88.23	15.6	-999.1	436.6	406.6	29.94	14.582	
6,500.0	6,469.5	6,542.1	6,465.2	17.8	23.4	-88.24	15.7	-1,003.0	439.8	409.5	30.33	14.501	
6,600.0	6,569.5	6,647.5	6,570.5	17.9	23.5	-88.24	15.7	-1,003.2	440.0	409.3	30.71	14.327	
6,700.0	6,669.5	6,747.5	6,670.5	18.1	23.6	-88.24	15.7	-1,003.2	440.0	408.9	31.09	14.153	
6,800.0	6,769.5	6,847.5	6,770.5	18.3	23.8	-88.24	15.7	-1,003.2	440.0	408.5	31.47	13.983	
6,900.0	6,869.4	6,949.1	6,872.0	18.4	23.9	91.95	11.4	-1,003.2	440.0	408.2	31.83	13.826	
7,000.0	6,967.8	7,051.2	6,972.4	18.6	24.0	91.88	-6.9	-1,003.1	440.0	407.8	32.18	13.671	
7,100.0	7,062.8	7,153.2	7,069.0	18.8	24.1	91.78	-39.3	-1,003.0	440.0	407.4	32.57	13.507	
7,200.0	7,152.5	7,255.1	7,159.9	19.0	24.3	91.64	-85.0	-1,002.8	439.9	406.9	33.04	13.317	
7,300.0	7,235.3	7,356.8	7,243.4	19.2	24.5	91.46	-143.0	-1,002.6	439.9	406.3	33.63	13.082	
7,400.0	7,309.5	7,458.2	7,317.6	19.5	24.7	91.26	-212.0	-1,002.3	439.9	405.5	34.41	12.783	
7,500.0	7,373.6	7,559.5	7,381.2	19.9	25.0	91.04	-290.7	-1,002.0	439.8	404.4	35.44	12.410	
7,600.0	7,426.5	7,660.4	7,432.9	20.4	25.4	90.79	-377.3	-1,001.7	439.8	403.0	36.76	11.963	
7,700.0	7,467.1	7,761.1	7,471.9	21.1	25.9	90.53	-470.1	-1,001.4	439.8	401.4	38.40	11.453	
7,800.0	7,494.5	7,861.5	7,497.5	21.9	26.5	90.26	-567.1	-1,001.0	439.8	399.4	40.34	10.902	
7,880.7	7,506.7	7,942.4	7,508.0	22.7	27.1	90.04	-647.2	-1,000.7	439.8	397.7	42.11	10.444	
7,900.0	7,508.3	7,961.6	7,509.2	22.9	27.2	89.98	-666.4	-1,000.6	439.8	397.2	42.54	10.337	
8,000.0	7,510.0	8,061.6	7,510.0	24.0	28.1	89.87	-766.4	-1,000.3	439.8	394.8	44.97	9.780	
8,100.0	7,510.0	8,161.6	7,510.0	25.2	29.1	89.87	-866.4	-999.9	439.8	392.2	47.56	9.247	
8,200.0	7,510.0	8,261.6	7,510.0	26.5	30.2	89.87	-966.4	-999.5	439.8	389.5	50.31	8.741	
8,300.0	7,510.0	8,361.6	7,510.0	27.8	31.4	89.87	-1,066.4	-999.1	439.8	386.6	53.20	8.267	
8,400.0	7,510.0	8,461.6	7,510.0	29.3	32.6	89.87	-1,166.4	-998.7	439.8	383.6	56.20	7.825	
8,500.0	7,510.0	8,561.6	7,510.0	30.7	33.9	89.87	-1,266.4	-998.4	439.8	380.5	59.30	7.416	
8,600.0	7,510.0	8,661.6	7,510.0	32.3	35.3	89.87	-1,366.4	-998.0	439.8	377.3	62.49	7.038	
8,700.0	7,510.0	8,761.6	7,510.0	33.9	36.8	89.87	-1,466.4	-997.6	439.8	374.0	65.74	6.689	
8,800.0	7,510.0	8,861.6	7,510.0	35.5	38.2	89.87	-1,566.4	-997.2	439.8	370.7	69.06	6.368	
8,900.0	7,510.0	8,961.6	7,510.0	37.1	39.8	89.87	-1,666.4	-996.8	439.8	367.3	72.43	6.072	
9,000.0	7,510.0	9,061.6	7,510.0	38.8	41.3	89.87	-1,766.4	-996.5	439.8	363.9	75.85	5.798	
9,100.0	7,510.0	9,161.6	7,510.0	40.5	42.9	89.87	-1,866.4	-996.1	439.8	360.5	79.30	5.545	
9,200.0	7,510.0	9,261.6	7,510.0	42.2	44.5	89.87	-1,966.4	-995.7	439.8	357.0	82.80	5.312	
9,300.0	7,510.0	9,361.6	7,510.0	43.9	46.2	89.87	-2,066.4	-995.3	439.8	353.5	86.32	5.095	
9,400.0	7,510.0	9,461.6	7,510.0	45.6	47.8	89.87	-2,166.4	-995.0	439.8	349.9	89.86	4.894	
9,500.0	7,510.0	9,561.6	7,510.0	47.4	49.5	89.87	-2,266.4	-994.6	439.8	346.3	93.44	4.707	
9,600.0	7,510.0	9,661.6	7,510.0	49.2	51.2	89.87	-2,366.4	-994.2	439.8	342.8	97.03	4.532	
9,700.0	7,510.0	9,761.6	7,510.0	50.9	52.9	89.87	-2,466.4	-993.8	439.8	339.1	100.64	4.370	
9,800.0	7,510.0	9,861.6	7,510.0	52.7	54.6	89.87	-2,566.4	-993.4	439.8	335.5	104.27	4.218	
9,900.0	7,510.0	9,961.6	7,510.0	54.5	56.4	89.87	-2,666.4	-993.1	439.8	331.9	107.92	4.075	
10,000.0	7,510.0	10,061.6	7,510.0	56.3	58.1	89.87	-2,766.4	-992.7	439.8	328.2	111.58	3.942	
10,100.0	7,510.0	10,161.6	7,510.0	58.2	59.9	89.87	-2,866.4	-992.3	439.8	324.5	115.25	3.816	

CC - Min centre to center distance or convergent point, SF - min separation factor, ES - min ellipse separation

<b>Company:</b>	Synergy Resources	<b>Local Co-ordinate Reference:</b>	Well SRC Gies T-15-22CHZ
<b>Project:</b>	SEC.15-T7N-R65W	<b>TVD Reference:</b>	WELL @ 4851.0ft (RKB - 13')
<b>Reference Site:</b>	SRC Gies Pad Sec.15-T7N-R65W	<b>MD Reference:</b>	WELL @ 4851.0ft (RKB - 13')
<b>Site Error:</b>	0.0ft	<b>North Reference:</b>	True
<b>Reference Well:</b>	SRC Gies T-15-22CHZ	<b>Survey Calculation Method:</b>	Minimum Curvature
<b>Well Error:</b>	0.0ft	<b>Output errors are at</b>	2.00 sigma
<b>Reference Wellbore</b>	Wellbore #1	<b>Database:</b>	landmark
<b>Reference Design:</b>	Plan #1 (5-7-14)	<b>Offset TVD Reference:</b>	Offset Datum

<b>Offset Design</b> SRC Gies Pad Sec.15-T7N-R65W - SRC Gies 34-15-22CHZ - Wellbore #1 - Plan #1 (5-6-14)												<b>Offset Site Error:</b>	0.0 ft
Survey Program: 0-MWD												<b>Offset Well Error:</b>	0.0 ft
Reference		Offset		Semi Major Axis			Distance						
Measured Depth (ft)	Vertical Depth (ft)	Measured Depth (ft)	Vertical Depth (ft)	Reference (ft)	Offset (ft)	Highside Toolface (°)	Offset Wellbore Centre +N/-S (ft)	+E/-W (ft)	Between Centres (ft)	Between Ellipses (ft)	Minimum Separation (ft)	Separation Factor	Warning
10,200.0	7,510.0	10,261.6	7,510.0	60.0	61.7	89.87	-2,966.4	-991.9	439.8	320.9	118.93	3.698	
10,300.0	7,510.0	10,361.6	7,510.0	61.8	63.5	89.87	-3,066.4	-991.6	439.8	317.2	122.62	3.587	
10,400.0	7,510.0	10,461.6	7,510.0	63.6	65.3	89.87	-3,166.4	-991.2	439.8	313.5	126.32	3.482	
10,500.0	7,510.0	10,561.6	7,510.0	65.5	67.1	89.87	-3,266.4	-990.8	439.8	309.8	130.03	3.382	
10,600.0	7,510.0	10,661.6	7,510.0	67.3	68.9	89.87	-3,366.4	-990.4	439.8	306.0	133.75	3.288	
10,700.0	7,510.0	10,761.6	7,510.0	69.2	70.7	89.87	-3,466.3	-990.0	439.8	302.3	137.48	3.199	
10,800.0	7,510.0	10,861.6	7,510.0	71.0	72.5	89.87	-3,566.3	-989.7	439.8	298.6	141.21	3.115	
10,900.0	7,510.0	10,961.6	7,510.0	72.9	74.3	89.87	-3,666.3	-989.3	439.8	294.9	144.95	3.034	
11,000.0	7,510.0	11,061.6	7,510.0	74.8	76.1	89.87	-3,766.3	-988.9	439.8	291.1	148.69	2.958	
11,100.0	7,510.0	11,161.6	7,510.0	76.6	78.0	89.87	-3,866.3	-988.5	439.8	287.4	152.44	2.885	
11,200.0	7,510.0	11,261.6	7,510.0	78.5	79.8	89.87	-3,966.3	-988.2	439.8	283.6	156.20	2.816	
11,300.0	7,510.0	11,361.6	7,510.0	80.4	81.7	89.87	-4,066.3	-987.8	439.8	279.9	159.96	2.750	
11,400.0	7,510.0	11,461.6	7,510.0	82.2	83.5	89.87	-4,166.3	-987.4	439.8	276.1	163.72	2.686	
11,500.0	7,510.0	11,561.6	7,510.0	84.1	85.3	89.87	-4,266.3	-987.0	439.8	272.3	167.49	2.626	
11,600.0	7,510.0	11,661.6	7,510.0	86.0	87.2	89.87	-4,366.3	-986.6	439.8	268.6	171.26	2.568	
11,700.0	7,510.0	11,761.6	7,510.0	87.9	89.1	89.87	-4,466.3	-986.3	439.8	264.8	175.03	2.513	
11,727.7	7,510.0	11,789.3	7,510.0	88.3	89.6	89.87	-4,494.0	-986.2	439.8	263.8	175.98	2.499	
11,751.8	7,510.0	11,810.0	7,510.0	88.7	90.0	89.87	-4,514.7	-986.1	439.8	263.1	176.74	2.489 SF	

<b>Company:</b>	Synergy Resources	<b>Local Co-ordinate Reference:</b>	Well SRC Gies T-15-22CHZ
<b>Project:</b>	SEC.15-T7N-R65W	<b>TVD Reference:</b>	WELL @ 4851.0ft (RKB - 13')
<b>Reference Site:</b>	SRC Gies Pad Sec.15-T7N-R65W	<b>MD Reference:</b>	WELL @ 4851.0ft (RKB - 13')
<b>Site Error:</b>	0.0ft	<b>North Reference:</b>	True
<b>Reference Well:</b>	SRC Gies T-15-22CHZ	<b>Survey Calculation Method:</b>	Minimum Curvature
<b>Well Error:</b>	0.0ft	<b>Output errors are at</b>	2.00 sigma
<b>Reference Wellbore</b>	Wellbore #1	<b>Database:</b>	landmark
<b>Reference Design:</b>	Plan #1 (5-7-14)	<b>Offset TVD Reference:</b>	Offset Datum

Offset Design												Offset Site Error:	0.0 ft
Survey Program: 0-MWD												Offset Well Error:	0.0 ft
Reference		Offset		Semi Major Axis			Distance						
Measured Depth (ft)	Vertical Depth (ft)	Measured Depth (ft)	Vertical Depth (ft)	Reference (ft)	Offset (ft)	Highside Toolface (°)	Offset Wellbore Centre +N/-S (ft)	+E/-W (ft)	Between Centres (ft)	Between Ellipses (ft)	Minimum Separation (ft)	Separation Factor	Warning
0.0	0.0	0.0	0.0	0.0	0.0	-88.96	0.4	-20.0	20.0				
100.0	100.0	100.0	100.0	0.1	0.1	-88.96	0.4	-20.0	20.0	19.8	0.22	89.013	
200.0	200.0	200.0	200.0	0.3	0.3	-88.96	0.4	-20.0	20.0	19.3	0.67	29.671	
300.0	300.0	300.0	300.0	0.6	0.6	-88.96	0.4	-20.0	20.0	18.9	1.12	17.803	
400.0	400.0	400.0	400.0	0.8	0.8	-88.96	0.4	-20.0	20.0	18.4	1.57	12.716 CC, ES	
500.0	500.0	499.3	499.2	1.0	1.0	-88.99	0.4	-21.7	21.7	19.7	2.01	10.817	
600.0	600.0	598.3	598.1	1.2	1.2	-89.05	0.4	-26.9	26.9	24.5	2.45	11.005	
700.0	700.0	697.0	696.5	1.4	1.4	0.69	0.5	-35.4	33.8	31.0	2.87	11.790	
800.0	799.8	795.5	794.3	1.7	1.7	0.70	0.7	-47.3	40.7	37.4	3.29	12.366	
900.0	899.5	895.4	893.2	1.9	2.0	0.75	0.8	-61.0	45.7	42.0	3.72	12.301	
1,000.0	998.8	995.3	992.2	2.1	2.3	0.83	1.0	-74.7	48.5	44.4	4.16	11.657	
1,100.0	1,098.2	1,095.3	1,091.2	2.4	2.6	0.90	1.2	-88.4	51.3	46.6	4.62	11.106	
1,200.0	1,197.6	1,195.3	1,190.2	2.7	3.0	0.97	1.3	-102.2	54.0	48.9	5.07	10.641	
1,300.0	1,297.0	1,295.2	1,289.2	3.0	3.3	1.03	1.5	-115.9	56.7	51.2	5.54	10.247	
1,400.0	1,396.4	1,395.2	1,388.2	3.2	3.6	1.08	1.6	-129.6	59.5	53.5	6.00	9.908	
1,500.0	1,495.8	1,495.1	1,487.3	3.5	4.0	1.13	1.8	-143.4	62.2	55.8	6.47	9.614	
1,600.0	1,595.2	1,595.1	1,586.3	3.8	4.3	1.17	1.9	-157.1	65.0	58.0	6.94	9.357	
1,700.0	1,694.6	1,695.1	1,685.3	4.1	4.6	1.22	2.1	-170.8	67.7	60.3	7.42	9.131	
1,800.0	1,794.0	1,795.0	1,784.3	4.4	5.0	1.25	2.3	-184.6	70.5	62.6	7.89	8.930	
1,900.0	1,893.4	1,895.0	1,883.3	4.7	5.3	1.29	2.4	-198.3	73.2	64.8	8.37	8.751	
2,000.0	1,992.8	1,995.0	1,982.3	5.0	5.7	1.32	2.6	-212.0	76.0	67.1	8.84	8.590	
2,100.0	2,092.2	2,094.9	2,081.3	5.3	6.0	1.35	2.7	-225.8	78.7	69.4	9.32	8.445	
2,200.0	2,191.5	2,194.9	2,180.4	5.6	6.4	1.38	2.9	-239.5	81.4	71.6	9.80	8.314	
2,300.0	2,290.9	2,294.8	2,279.4	5.9	6.7	1.41	3.1	-253.2	84.2	73.9	10.27	8.194	
2,400.0	2,390.3	2,394.8	2,378.4	6.2	7.0	1.43	3.2	-267.0	86.9	76.2	10.75	8.085	
2,500.0	2,489.7	2,494.8	2,477.4	6.5	7.4	1.45	3.4	-280.7	89.7	78.4	11.23	7.984	
2,600.0	2,589.1	2,594.7	2,576.4	6.8	7.7	1.47	3.5	-294.4	92.4	80.7	11.71	7.892	
2,700.0	2,688.5	2,694.7	2,675.4	7.1	8.1	1.50	3.7	-308.2	95.2	83.0	12.19	7.806	
2,800.0	2,787.9	2,794.7	2,774.4	7.4	8.4	1.51	3.8	-321.9	97.9	85.2	12.67	7.727	
2,900.0	2,887.3	2,894.6	2,873.5	7.8	8.8	1.53	4.0	-335.6	100.7	87.5	13.15	7.654	
3,000.0	2,986.7	2,994.6	2,972.5	8.1	9.1	1.55	4.2	-349.3	103.4	89.8	13.63	7.585	
3,100.0	3,086.1	3,094.5	3,071.5	8.4	9.5	1.57	4.3	-363.1	106.1	92.0	14.11	7.521	
3,200.0	3,185.5	3,194.5	3,170.5	8.7	9.8	1.58	4.5	-376.8	108.9	94.3	14.59	7.461	
3,300.0	3,284.9	3,294.5	3,269.5	9.0	10.1	1.60	4.6	-390.5	111.6	96.6	15.08	7.405	
3,400.0	3,384.2	3,394.4	3,368.5	9.3	10.5	1.61	4.8	-404.3	114.4	98.8	15.56	7.353	
3,500.0	3,483.6	3,494.4	3,467.5	9.6	10.8	1.62	5.0	-418.0	117.1	101.1	16.04	7.303	
3,600.0	3,583.0	3,594.4	3,566.6	9.9	11.2	1.64	5.1	-431.7	119.9	103.3	16.52	7.256	
3,700.0	3,682.4	3,694.3	3,665.6	10.2	11.5	1.65	5.3	-445.5	122.6	105.6	17.00	7.212	
3,800.0	3,781.8	3,794.3	3,764.6	10.5	11.9	1.66	5.4	-459.2	125.4	107.9	17.48	7.170	
3,900.0	3,881.2	3,894.2	3,863.6	10.8	12.2	1.67	5.6	-472.9	128.1	110.1	17.97	7.131	
4,000.0	3,980.6	3,994.2	3,962.6	11.1	12.6	1.68	5.7	-486.7	130.8	112.4	18.45	7.093	
4,100.0	4,080.0	4,094.2	4,061.6	11.4	12.9	1.69	5.9	-500.4	133.6	114.7	18.93	7.057	
4,200.0	4,179.4	4,194.1	4,160.6	11.7	13.3	1.70	6.1	-514.1	136.3	116.9	19.41	7.023	
4,300.0	4,278.8	4,294.1	4,259.7	12.0	13.6	1.71	6.2	-527.9	139.1	119.2	19.89	6.991	
4,400.0	4,378.2	4,394.1	4,358.7	12.3	13.9	1.72	6.4	-541.6	141.8	121.5	20.38	6.960	
4,500.0	4,477.5	4,494.0	4,457.7	12.7	14.3	1.73	6.5	-555.3	144.6	123.7	20.86	6.931	
4,600.0	4,576.9	4,594.0	4,556.7	13.0	14.6	1.74	6.7	-569.1	147.3	126.0	21.34	6.903	
4,700.0	4,676.3	4,693.9	4,655.7	13.3	15.0	1.75	6.9	-582.8	150.1	128.2	21.82	6.876	
4,800.0	4,775.7	4,793.9	4,754.7	13.6	15.3	1.76	7.0	-596.5	152.8	130.5	22.31	6.850	
4,900.0	4,875.1	4,893.9	4,853.8	13.9	15.7	1.76	7.2	-610.3	155.5	132.8	22.79	6.826	
5,000.0	4,974.5	4,993.8	4,952.8	14.2	16.0	1.77	7.3	-624.0	158.3	135.0	23.27	6.802	
5,100.0	5,073.9	5,093.8	5,051.8	14.5	16.4	1.78	7.5	-637.7	161.0	137.3	23.75	6.779	

CC - Min centre to center distance or convergent point, SF - min separation factor, ES - min ellipse separation

<b>Company:</b>	Synergy Resources	<b>Local Co-ordinate Reference:</b>	Well SRC Gies T-15-22CHZ
<b>Project:</b>	SEC.15-T7N-R65W	<b>TVD Reference:</b>	WELL @ 4851.0ft (RKB - 13')
<b>Reference Site:</b>	SRC Gies Pad Sec.15-T7N-R65W	<b>MD Reference:</b>	WELL @ 4851.0ft (RKB - 13')
<b>Site Error:</b>	0.0ft	<b>North Reference:</b>	True
<b>Reference Well:</b>	SRC Gies T-15-22CHZ	<b>Survey Calculation Method:</b>	Minimum Curvature
<b>Well Error:</b>	0.0ft	<b>Output errors are at</b>	2.00 sigma
<b>Reference Wellbore</b>	Wellbore #1	<b>Database:</b>	landmark
<b>Reference Design:</b>	Plan #1 (5-7-14)	<b>Offset TVD Reference:</b>	Offset Datum

Offset Design												Offset Site Error:	0.0 ft
Survey Program: 0-MWD												Offset Well Error:	0.0 ft
Reference		Offset		Semi Major Axis			Distance						Warning
Measured Depth (ft)	Vertical Depth (ft)	Measured Depth (ft)	Vertical Depth (ft)	Reference (ft)	Offset (ft)	Highside Toolface (°)	Offset Wellbore Centre +N/-S (ft)	+E/-W (ft)	Between Centres (ft)	Between Ellipses (ft)	Minimum Separation (ft)	Separation Factor	
5,200.0	5,173.3	5,193.8	5,150.8	14.8	16.7	1.78	7.6	-651.4	163.8	139.5	24.24	6.758	
5,300.0	5,272.7	5,293.7	5,249.8	15.1	17.1	1.79	7.8	-665.2	166.5	141.8	24.72	6.737	
5,400.0	5,372.1	5,393.7	5,348.8	15.4	17.4	1.80	8.0	-678.9	169.3	144.1	25.20	6.716	
5,500.0	5,471.5	5,493.6	5,447.8	15.7	17.8	1.80	8.1	-692.6	172.0	146.3	25.69	6.697	
5,600.0	5,570.9	5,593.6	5,546.9	16.0	18.1	1.81	8.3	-706.4	174.8	148.6	26.17	6.678	
5,700.0	5,670.2	5,693.6	5,645.9	16.3	18.4	1.82	8.4	-720.1	177.5	150.9	26.65	6.660	
5,800.0	5,769.8	5,793.5	5,744.8	16.6	18.8	1.81	8.6	-733.8	181.5	154.4	27.10	6.699	
5,900.0	5,869.6	5,893.2	5,843.6	16.8	19.1	1.78	8.8	-747.5	189.0	161.5	27.48	6.878	
6,000.0	5,969.5	5,995.3	5,944.8	16.9	19.5	1.71	8.9	-761.3	199.7	171.9	27.82	7.178	
6,100.0	6,069.5	6,102.4	6,051.3	17.1	19.7	-88.13	9.0	-772.6	210.1	181.9	28.19	7.454	
6,200.0	6,169.5	6,210.2	6,158.8	17.3	19.9	-88.17	9.1	-779.9	216.9	188.3	28.57	7.592	
6,300.0	6,269.5	6,318.4	6,267.0	17.4	20.1	-88.19	9.2	-783.2	219.9	191.0	28.95	7.598	
6,400.0	6,369.5	6,421.0	6,369.5	17.6	20.2	-88.19	9.2	-783.4	220.1	190.8	29.33	7.506	
6,500.0	6,469.5	6,521.0	6,469.5	17.8	20.4	-88.19	9.2	-783.4	220.1	190.4	29.71	7.409	
6,600.0	6,569.5	6,621.4	6,569.9	17.9	20.5	-88.57	7.7	-783.4	220.1	190.0	30.09	7.315	
6,659.6	6,629.1	6,680.9	6,629.1	18.0	20.6	-90.21	1.4	-783.4	220.0	189.7	30.29	7.263	
6,700.0	6,669.5	6,720.5	6,668.1	18.1	20.6	-92.01	-5.5	-783.3	220.1	189.7	30.43	7.233	
6,800.0	6,769.5	6,814.4	6,758.5	18.3	20.8	-98.43	-30.4	-783.3	222.5	191.7	30.86	7.210	
6,900.0	6,869.4	6,900.0	6,837.5	18.4	20.9	73.87	-63.2	-783.1	230.4	198.8	31.58	7.296	
7,000.0	6,967.8	6,986.2	6,912.5	18.6	21.1	66.36	-105.5	-783.0	242.4	210.0	32.32	7.498	
7,100.0	7,062.8	7,067.8	6,978.5	18.8	21.2	60.05	-153.7	-782.8	257.0	224.2	32.74	7.848	
7,200.0	7,152.5	7,150.0	7,038.8	19.0	21.5	54.66	-209.3	-782.6	272.8	240.1	32.69	8.344	
7,300.0	7,235.3	7,225.1	7,088.1	19.2	21.7	50.50	-266.0	-782.4	288.6	256.4	32.20	8.964	
7,400.0	7,309.5	7,300.0	7,131.0	19.5	22.0	47.10	-327.3	-782.1	303.7	272.3	31.42	9.666	
7,500.0	7,373.6	7,376.5	7,168.1	19.9	22.4	44.36	-394.2	-781.9	317.2	286.6	30.59	10.370	
7,600.0	7,426.5	7,450.0	7,196.7	20.4	22.8	42.31	-461.8	-781.6	328.7	298.7	29.99	10.959	
7,700.0	7,467.1	7,524.3	7,218.5	21.1	23.3	40.80	-532.9	-781.4	337.7	307.8	29.93	11.283	
7,800.0	7,494.5	7,600.0	7,233.0	21.9	23.9	39.78	-607.1	-781.1	344.1	313.5	30.65	11.226	
7,900.0	7,508.3	7,670.1	7,239.4	22.9	24.6	39.27	-676.9	-780.8	347.7	315.4	32.24	10.782	
8,000.0	7,510.0	7,758.7	7,240.0	24.0	25.5	39.18	-765.5	-780.5	348.3	314.0	34.26	10.166	
8,100.0	7,510.0	7,858.7	7,240.0	25.2	26.6	39.18	-865.5	-780.1	348.3	312.2	36.09	9.651	
8,200.0	7,510.0	7,958.7	7,240.0	26.5	27.8	39.18	-965.5	-779.8	348.3	310.3	38.02	9.161	
8,300.0	7,510.0	8,058.7	7,240.0	27.8	29.1	39.18	-1,065.5	-779.4	348.3	308.3	40.04	8.700	
8,400.0	7,510.0	8,158.7	7,240.0	29.3	30.5	39.18	-1,165.5	-779.0	348.3	306.2	42.13	8.268	
8,500.0	7,510.0	8,258.7	7,240.0	30.7	31.9	39.18	-1,265.5	-778.6	348.3	304.0	44.28	7.866	
8,600.0	7,510.0	8,358.7	7,240.0	32.3	33.4	39.18	-1,365.5	-778.3	348.3	301.8	46.49	7.492	
8,700.0	7,510.0	8,458.7	7,240.0	33.9	34.9	39.18	-1,465.5	-777.9	348.3	299.6	48.75	7.145	
8,800.0	7,510.0	8,558.7	7,240.0	35.5	36.5	39.18	-1,565.5	-777.5	348.3	297.3	51.05	6.823	
8,900.0	7,510.0	8,658.7	7,240.0	37.1	38.1	39.18	-1,665.5	-777.2	348.3	294.9	53.38	6.525	
9,000.0	7,510.0	8,758.7	7,240.0	38.8	39.7	39.18	-1,765.5	-776.8	348.3	292.6	55.75	6.248	
9,100.0	7,510.0	8,858.7	7,240.0	40.5	41.4	39.19	-1,865.5	-776.4	348.3	290.2	58.14	5.991	
9,200.0	7,510.0	8,958.7	7,240.0	42.2	43.0	39.19	-1,965.5	-776.0	348.3	287.8	60.56	5.752	
9,300.0	7,510.0	9,058.7	7,240.0	43.9	44.7	39.19	-2,065.5	-775.7	348.3	285.3	63.00	5.529	
9,400.0	7,510.0	9,158.7	7,240.0	45.6	46.4	39.19	-2,165.5	-775.3	348.4	282.9	65.46	5.321	
9,500.0	7,510.0	9,258.7	7,240.0	47.4	48.2	39.19	-2,265.5	-774.9	348.4	280.4	67.94	5.127	
9,600.0	7,510.0	9,358.7	7,240.0	49.2	49.9	39.19	-2,365.5	-774.5	348.4	277.9	70.43	4.946	
9,700.0	7,510.0	9,458.7	7,240.0	50.9	51.7	39.19	-2,465.5	-774.2	348.4	275.4	72.94	4.776	
9,800.0	7,510.0	9,558.7	7,240.0	52.7	53.4	39.19	-2,565.5	-773.8	348.4	272.9	75.46	4.617	
9,900.0	7,510.0	9,658.7	7,240.0	54.5	55.2	39.19	-2,665.5	-773.4	348.4	270.4	77.98	4.467	
10,000.0	7,510.0	9,758.7	7,240.0	56.3	57.0	39.19	-2,765.5	-773.0	348.4	267.9	80.52	4.326	
10,100.0	7,510.0	9,858.7	7,240.0	58.2	58.8	39.19	-2,865.5	-772.7	348.4	265.3	83.07	4.194	
10,200.0	7,510.0	9,958.7	7,240.0	60.0	60.6	39.19	-2,965.5	-772.3	348.4	262.8	85.63	4.069	

CC - Min centre to center distance or convergent point, SF - min separation factor, ES - min ellipse separation

<b>Company:</b>	Synergy Resources	<b>Local Co-ordinate Reference:</b>	Well SRC Gies T-15-22CHZ
<b>Project:</b>	SEC.15-T7N-R65W	<b>TVD Reference:</b>	WELL @ 4851.0ft (RKB - 13')
<b>Reference Site:</b>	SRC Gies Pad Sec.15-T7N-R65W	<b>MD Reference:</b>	WELL @ 4851.0ft (RKB - 13')
<b>Site Error:</b>	0.0ft	<b>North Reference:</b>	True
<b>Reference Well:</b>	SRC Gies T-15-22CHZ	<b>Survey Calculation Method:</b>	Minimum Curvature
<b>Well Error:</b>	0.0ft	<b>Output errors are at</b>	2.00 sigma
<b>Reference Wellbore</b>	Wellbore #1	<b>Database:</b>	landmark
<b>Reference Design:</b>	Plan #1 (5-7-14)	<b>Offset TVD Reference:</b>	Offset Datum

<b>Offset Design</b> SRC Gies Pad Sec.15-T7N-R65W - SRC Gies 34-15-22NHZ - Wellbore #1 - Plan #1 (5-7-14)												<b>Offset Site Error:</b>	0.0 ft
Survey Program: 0-MWD												<b>Offset Well Error:</b>	0.0 ft
Reference		Offset		Semi Major Axis			Distance						
Measured Depth (ft)	Vertical Depth (ft)	Measured Depth (ft)	Vertical Depth (ft)	Reference (ft)	Offset (ft)	Highside Toolface (°)	Offset Wellbore Centre +N/-S (ft)	+E/-W (ft)	Between Centres (ft)	Between Ellipses (ft)	Minimum Separation (ft)	Separation Factor	Warning
10,300.0	7,510.0	10,058.7	7,240.0	61.8	62.4	39.19	-3,065.5	-771.9	348.4	260.2	88.19	3.950	
10,400.0	7,510.0	10,158.7	7,240.0	63.6	64.2	39.20	-3,165.5	-771.6	348.4	257.6	90.77	3.838	
10,500.0	7,510.0	10,258.7	7,240.0	65.5	66.1	39.20	-3,265.5	-771.2	348.4	255.1	93.34	3.732	
10,600.0	7,510.0	10,358.7	7,240.0	67.3	67.9	39.20	-3,365.5	-770.8	348.4	252.5	95.93	3.632	
10,700.0	7,510.0	10,458.7	7,240.0	69.2	69.7	39.20	-3,465.5	-770.4	348.4	249.9	98.52	3.536	
10,800.0	7,510.0	10,558.7	7,240.0	71.0	71.6	39.20	-3,565.5	-770.1	348.4	247.3	101.11	3.446	
10,900.0	7,510.0	10,658.7	7,240.0	72.9	73.4	39.20	-3,665.5	-769.7	348.4	244.7	103.71	3.359	
11,000.0	7,510.0	10,758.7	7,240.0	74.8	75.3	39.20	-3,765.5	-769.3	348.4	242.1	106.31	3.277	
11,100.0	7,510.0	10,858.7	7,240.0	76.6	77.1	39.20	-3,865.5	-768.9	348.4	239.5	108.92	3.199	
11,200.0	7,510.0	10,958.7	7,240.0	78.5	79.0	39.20	-3,965.5	-768.6	348.4	236.9	111.53	3.124	
11,300.0	7,510.0	11,058.7	7,240.0	80.4	80.8	39.20	-4,065.5	-768.2	348.4	234.3	114.15	3.052	
11,400.0	7,510.0	11,158.7	7,240.0	82.2	82.7	39.20	-4,165.5	-767.8	348.4	231.7	116.77	2.984	
11,500.0	7,510.0	11,258.7	7,240.0	84.1	84.6	39.20	-4,265.5	-767.4	348.4	229.0	119.39	2.919	
11,600.0	7,510.0	11,358.7	7,240.0	86.0	86.4	39.20	-4,365.5	-767.1	348.4	226.4	122.01	2.856	
11,700.0	7,510.0	11,458.7	7,240.0	87.9	88.3	39.21	-4,465.5	-766.7	348.4	223.8	124.64	2.796	
11,728.2	7,510.0	11,487.0	7,240.0	88.3	88.8	39.21	-4,493.7	-766.6	348.4	223.2	125.29	2.781	
11,751.8	7,510.0	11,509.0	7,240.0	88.7	89.3	39.21	-4,515.7	-766.5	348.4	222.6	125.81	2.770 SF	



<b>Company:</b>	Synergy Resources	<b>Local Co-ordinate Reference:</b>	Well SRC Gies T-15-22CHZ
<b>Project:</b>	SEC.15-T7N-R65W	<b>TVD Reference:</b>	WELL @ 4851.0ft (RKB - 13')
<b>Reference Site:</b>	SRC Gies Pad Sec.15-T7N-R65W	<b>MD Reference:</b>	WELL @ 4851.0ft (RKB - 13')
<b>Site Error:</b>	0.0ft	<b>North Reference:</b>	True
<b>Reference Well:</b>	SRC Gies T-15-22CHZ	<b>Survey Calculation Method:</b>	Minimum Curvature
<b>Well Error:</b>	0.0ft	<b>Output errors are at</b>	2.00 sigma
<b>Reference Wellbore</b>	Wellbore #1	<b>Database:</b>	landmark
<b>Reference Design:</b>	Plan #1 (5-7-14)	<b>Offset TVD Reference:</b>	Offset Datum

Offset Design													Offset Site Error:	0.0ft
Survey Program: 0-MWD													Offset Well Error:	0.0ft
Reference		Offset		Semi Major Axis			Distance							Warning
Measured Depth (ft)	Vertical Depth (ft)	Measured Depth (ft)	Vertical Depth (ft)	Reference (ft)	Offset (ft)	Highside Toolface (°)	Offset Wellbore Centre +N/-S (ft)	+E/-W (ft)	Between Centres (ft)	Between Ellipses (ft)	Minimum Separation (ft)	Separation Factor		
0.0	0.0	0.0	0.0	0.0	0.0	91.83	-2.6	80.0	80.1					
100.0	100.0	100.0	100.0	0.1	0.1	91.83	-2.6	80.0	80.1	79.8	0.22	356.175		
200.0	200.0	200.0	200.0	0.3	0.3	91.83	-2.6	80.0	80.1	79.4	0.67	118.725		
300.0	300.0	300.0	300.0	0.6	0.6	91.83	-2.6	80.0	80.1	78.9	1.12	71.235		
400.0	400.0	400.0	400.0	0.8	0.8	91.83	-2.6	80.0	80.1	78.5	1.57	50.882		
500.0	500.0	500.0	500.0	1.0	1.0	91.83	-2.6	80.0	80.1	78.0	2.02	39.575		
600.0	600.0	600.0	600.0	1.2	1.2	91.83	-2.6	80.0	80.1	77.6	2.47	32.380 CC, ES		
700.0	700.0	700.0	700.0	1.4	1.5	-178.43	-2.6	80.0	81.8	78.9	2.91	28.111		
800.0	799.8	799.8	799.8	1.7	1.7	-178.52	-2.6	80.0	87.0	83.7	3.34	26.063		
900.0	899.5	896.2	896.2	1.9	1.9	-178.58	-2.7	81.6	97.4	93.7	3.75	25.942		
1,000.0	998.8	991.4	991.3	2.1	2.1	-178.56	-3.1	86.4	113.3	109.2	4.17	27.186		
1,100.0	1,098.2	1,088.2	1,087.8	2.4	2.3	-178.46	-3.8	93.8	132.0	127.4	4.59	28.731		
1,200.0	1,197.6	1,186.4	1,185.7	2.7	2.5	-178.38	-4.6	101.6	150.8	145.8	5.02	30.074		
1,300.0	1,297.0	1,284.6	1,283.5	3.0	2.8	-178.32	-5.3	109.4	169.7	164.3	5.44	31.174		
1,400.0	1,396.4	1,382.8	1,381.4	3.2	3.0	-178.27	-6.0	117.2	188.6	182.7	5.88	32.085		
1,500.0	1,495.8	1,481.0	1,479.3	3.5	3.2	-178.23	-6.8	124.9	207.5	201.1	6.32	32.850		
1,600.0	1,595.2	1,579.2	1,577.2	3.8	3.5	-178.20	-7.5	132.7	226.3	219.6	6.76	33.499		
1,700.0	1,694.6	1,677.4	1,675.1	4.1	3.7	-178.17	-8.2	140.5	245.2	238.0	7.20	34.053		
1,800.0	1,794.0	1,775.6	1,773.0	4.4	4.0	-178.15	-9.0	148.3	264.1	256.4	7.65	34.537		
1,900.0	1,893.4	1,873.8	1,870.9	4.7	4.2	-178.13	-9.7	156.1	282.9	274.8	8.09	34.957		
2,000.0	1,992.8	1,972.0	1,968.8	5.0	4.5	-178.11	-10.4	163.8	301.8	293.3	8.54	35.327		
2,100.0	2,092.2	2,070.2	2,066.7	5.3	4.7	-178.09	-11.2	171.6	320.7	311.7	8.99	35.655		
2,200.0	2,191.5	2,168.4	2,164.6	5.6	5.0	-178.08	-11.9	179.4	339.6	330.1	9.45	35.947		
2,300.0	2,290.9	2,266.6	2,262.5	5.9	5.2	-178.06	-12.6	187.2	358.4	348.5	9.90	36.208		
2,400.0	2,390.3	2,364.8	2,360.3	6.2	5.5	-178.05	-13.4	195.0	377.3	366.9	10.35	36.444		
2,500.0	2,489.7	2,463.0	2,458.2	6.5	5.8	-178.04	-14.1	202.7	396.2	385.4	10.81	36.657		
2,600.0	2,589.1	2,561.2	2,556.1	6.8	6.0	-178.03	-14.8	210.5	415.0	403.8	11.26	36.851		
2,700.0	2,688.5	2,659.4	2,654.0	7.1	6.3	-178.02	-15.5	218.3	433.9	422.2	11.72	37.027		
2,800.0	2,787.9	2,757.6	2,751.9	7.4	6.5	-178.02	-16.3	226.1	452.8	440.6	12.18	37.189		
2,900.0	2,887.3	2,855.8	2,849.8	7.8	6.8	-178.01	-17.0	233.9	471.7	459.0	12.63	37.338		
3,000.0	2,986.7	2,954.0	2,947.7	8.1	7.1	-178.00	-17.7	241.6	490.5	477.4	13.09	37.475		
3,100.0	3,086.1	3,052.3	3,045.6	8.4	7.3	-178.00	-18.5	249.4	509.4	495.9	13.55	37.602		
3,200.0	3,185.5	3,150.5	3,143.5	8.7	7.6	-177.99	-19.2	257.2	528.3	514.3	14.01	37.719		
3,300.0	3,284.9	3,248.7	3,241.4	9.0	7.9	-177.98	-19.9	265.0	547.1	532.7	14.46	37.828		
3,400.0	3,384.2	3,346.9	3,339.3	9.3	8.1	-177.98	-20.7	272.8	566.0	551.1	14.92	37.930		
3,500.0	3,483.6	3,445.1	3,437.2	9.6	8.4	-177.97	-21.4	280.6	584.9	569.5	15.38	38.025		
3,600.0	3,583.0	3,543.3	3,535.0	9.9	8.6	-177.97	-22.1	288.3	603.8	587.9	15.84	38.113		
3,700.0	3,682.4	3,641.5	3,632.9	10.2	8.9	-177.97	-22.9	296.1	622.6	606.3	16.30	38.197		
3,800.0	3,781.8	3,739.7	3,730.8	10.5	9.2	-177.96	-23.6	303.9	641.5	624.7	16.76	38.275		
3,900.0	3,881.2	3,854.9	3,845.7	10.8	9.4	-177.96	-24.4	312.1	659.6	642.4	17.23	38.290		
4,000.0	3,980.6	3,983.8	3,974.6	11.1	9.7	-177.99	-24.7	316.1	673.8	656.1	17.70	38.067		
4,100.0	4,080.0	4,089.2	4,080.0	11.4	9.8	-178.02	-24.8	316.2	684.9	666.7	18.14	37.755		
4,200.0	4,179.4	4,188.6	4,179.4	11.7	10.0	-178.05	-24.8	316.2	695.9	677.3	18.58	37.460		
4,300.0	4,278.8	4,288.0	4,278.8	12.0	10.2	-178.08	-24.8	316.2	706.9	687.9	19.01	37.175		
4,400.0	4,378.2	4,387.4	4,378.2	12.3	10.4	-178.11	-24.8	316.2	717.9	698.4	19.45	36.901		
4,500.0	4,477.5	4,486.8	4,477.5	12.7	10.6	-178.14	-24.8	316.2	728.9	709.0	19.89	36.638		
4,600.0	4,576.9	4,586.2	4,576.9	13.0	10.8	-178.17	-24.8	316.2	739.9	719.6	20.34	36.384		
4,700.0	4,676.3	4,685.5	4,676.3	13.3	11.0	-178.19	-24.8	316.2	750.9	730.1	20.78	36.140		
4,800.0	4,775.7	4,784.9	4,775.7	13.6	11.2	-178.22	-24.8	316.2	761.9	740.7	21.22	35.904		
4,900.0	4,875.1	4,884.3	4,875.1	13.9	11.4	-178.25	-24.8	316.2	772.9	751.3	21.66	35.677		
5,000.0	4,974.5	4,983.7	4,974.5	14.2	11.6	-178.27	-24.8	316.2	784.0	761.8	22.11	35.458		
5,100.0	5,073.9	5,083.1	5,073.9	14.5	11.8	-178.29	-24.8	316.2	795.0	772.4	22.55	35.247		

CC - Min centre to center distance or convergent point, SF - min separation factor, ES - min ellipse separation



<b>Company:</b>	Synergy Resources	<b>Local Co-ordinate Reference:</b>	Well SRC Gies T-15-22CHZ
<b>Project:</b>	SEC.15-T7N-R65W	<b>TVD Reference:</b>	WELL @ 4851.0ft (RKB - 13')
<b>Reference Site:</b>	SRC Gies Pad Sec.15-T7N-R65W	<b>MD Reference:</b>	WELL @ 4851.0ft (RKB - 13')
<b>Site Error:</b>	0.0ft	<b>North Reference:</b>	True
<b>Reference Well:</b>	SRC Gies T-15-22CHZ	<b>Survey Calculation Method:</b>	Minimum Curvature
<b>Well Error:</b>	0.0ft	<b>Output errors are at</b>	2.00 sigma
<b>Reference Wellbore</b>	Wellbore #1	<b>Database:</b>	landmark
<b>Reference Design:</b>	Plan #1 (5-7-14)	<b>Offset TVD Reference:</b>	Offset Datum

Offset Design												Offset Site Error:	0.0 ft
Survey Program: 0-MWD												Offset Well Error:	0.0 ft
Reference		Offset		Semi Major Axis			Distance						
Measured Depth (ft)	Vertical Depth (ft)	Measured Depth (ft)	Vertical Depth (ft)	Reference (ft)	Offset (ft)	Highside Toolface (°)	Offset Wellbore Centre +N/-S (ft)	+E/-W (ft)	Between Centres (ft)	Between Ellipses (ft)	Minimum Separation (ft)	Separation Factor	Warning
5,200.0	5,173.3	5,182.5	5,173.3	14.8	12.0	-178.32	-24.8	316.2	806.0	783.0	23.00	35.043	
5,300.0	5,272.7	5,281.9	5,272.7	15.1	12.2	-178.34	-24.8	316.2	817.0	793.5	23.45	34.846	
5,400.0	5,372.1	5,381.3	5,372.1	15.4	12.4	-178.36	-24.8	316.2	828.0	804.1	23.89	34.655	
5,500.0	5,471.5	5,480.7	5,471.5	15.7	12.6	-178.38	-24.8	316.2	839.0	814.7	24.34	34.470	
5,600.0	5,570.9	5,580.1	5,570.9	16.0	12.8	-178.41	-24.8	316.2	850.0	825.2	24.79	34.292	
5,700.0	5,670.2	5,679.5	5,670.2	16.3	13.0	-178.43	-24.8	316.2	861.0	835.8	25.24	34.119	
5,800.0	5,769.8	5,779.0	5,769.8	16.6	13.2	-178.45	-24.8	316.2	870.8	845.1	25.70	33.881	
5,900.0	5,869.6	5,878.8	5,869.6	16.8	13.4	-178.46	-24.8	316.2	877.1	850.9	26.11	33.585	
6,000.0	5,969.5	5,978.7	5,969.5	16.9	13.6	-178.47	-24.8	316.2	879.9	853.4	26.50	33.205	
6,100.0	6,069.5	6,078.7	6,069.5	17.1	13.8	91.75	-24.8	316.2	880.0	853.1	26.89	32.722	
6,200.0	6,169.5	6,178.7	6,169.5	17.3	14.0	91.75	-24.8	316.2	880.0	852.7	27.30	32.233	
6,300.0	6,269.5	6,278.7	6,269.5	17.4	14.2	91.75	-24.8	316.2	880.0	852.3	27.71	31.758	
6,400.0	6,369.5	6,378.7	6,369.5	17.6	14.4	91.75	-24.8	316.2	880.0	851.9	28.12	31.294	
6,500.0	6,469.5	6,478.7	6,469.5	17.8	14.6	91.75	-24.8	316.2	880.0	851.5	28.53	30.843	
6,600.0	6,569.5	6,578.7	6,569.5	17.9	14.8	91.75	-24.8	316.2	880.0	851.1	28.95	30.403	
6,700.0	6,669.5	6,678.7	6,669.5	18.1	15.0	91.75	-24.8	316.2	880.0	850.7	29.36	29.975	
6,800.0	6,769.5	6,778.7	6,769.5	18.3	15.2	91.75	-24.8	316.2	880.0	850.3	29.77	29.558	
6,900.0	6,869.4	6,875.7	6,866.3	18.4	15.4	-88.04	-28.4	316.2	880.0	849.9	30.16	29.181	
7,000.0	6,967.8	6,971.7	6,960.9	18.6	15.6	-88.08	-44.5	316.3	880.0	849.5	30.53	28.825	
7,100.0	7,062.8	7,067.8	7,052.6	18.8	15.8	-88.17	-73.1	316.4	880.0	849.0	30.93	28.449	
7,200.0	7,152.5	7,164.1	7,139.8	19.0	16.1	-88.28	-113.9	316.6	879.9	848.5	31.41	28.016	
7,300.0	7,235.3	7,260.7	7,220.9	19.2	16.3	-88.43	-166.1	316.8	879.8	847.8	32.01	27.483	
7,400.0	7,309.5	7,357.5	7,294.6	19.5	16.7	-88.61	-228.9	317.0	879.8	847.0	32.81	26.811	
7,500.0	7,373.6	7,454.8	7,359.3	19.9	17.2	-88.82	-301.4	317.3	879.7	845.8	33.86	25.977	
7,600.0	7,426.5	7,552.5	7,413.8	20.4	17.8	-89.04	-382.4	317.6	879.6	844.4	35.21	24.983	
7,700.0	7,467.1	7,650.7	7,457.0	21.1	18.6	-89.29	-470.5	317.9	879.6	842.7	36.87	23.859	
7,800.0	7,494.5	7,749.3	7,487.8	21.9	19.5	-89.55	-564.1	318.3	879.5	840.7	38.83	22.651	
7,900.0	7,508.3	7,848.6	7,505.6	22.9	20.6	-89.82	-661.7	318.7	879.5	838.5	41.07	21.418	
7,944.9	7,510.7	7,893.4	7,509.2	23.3	21.2	-89.90	-706.3	318.8	879.5	837.4	42.16	20.863	
8,000.0	7,510.0	7,948.4	7,510.0	24.0	21.8	-90.00	-761.3	319.0	879.5	836.0	43.52	20.208	
8,100.0	7,510.0	8,048.4	7,510.0	25.2	23.2	-90.00	-861.3	319.4	879.5	833.4	46.17	19.052	
8,200.0	7,510.0	8,148.4	7,510.0	26.5	24.5	-90.00	-961.3	319.8	879.5	830.6	48.96	17.964	
8,300.0	7,510.0	8,248.4	7,510.0	27.8	26.0	-90.00	-1,061.3	320.2	879.5	827.6	51.89	16.949	
8,400.0	7,510.0	8,348.4	7,510.0	29.3	27.5	-90.00	-1,161.3	320.6	879.5	824.6	54.94	16.009	
8,500.0	7,510.0	8,448.4	7,510.0	30.7	29.1	-90.00	-1,261.3	320.9	879.5	821.5	58.08	15.144	
8,600.0	7,510.0	8,548.4	7,510.0	32.3	30.7	-90.00	-1,361.3	321.3	879.5	818.2	61.30	14.348	
8,700.0	7,510.0	8,648.4	7,510.0	33.9	32.3	-90.00	-1,461.3	321.7	879.5	815.0	64.59	13.617	
8,800.0	7,510.0	8,748.4	7,510.0	35.5	34.0	-90.00	-1,561.3	322.1	879.6	811.6	67.94	12.945	
8,900.0	7,510.0	8,848.4	7,510.0	37.1	35.7	-90.00	-1,661.3	322.5	879.6	808.2	71.34	12.328	
9,000.0	7,510.0	8,948.4	7,510.0	38.8	37.4	-90.00	-1,761.3	322.9	879.6	804.8	74.79	11.761	
9,100.0	7,510.0	9,048.4	7,510.0	40.5	39.1	-90.00	-1,861.3	323.2	879.6	801.3	78.27	11.238	
9,200.0	7,510.0	9,148.4	7,510.0	42.2	40.9	-90.00	-1,961.3	323.6	879.6	797.8	81.79	10.755	
9,300.0	7,510.0	9,248.4	7,510.0	43.9	42.6	-90.00	-2,061.3	324.0	879.6	794.2	85.33	10.308	
9,400.0	7,510.0	9,348.4	7,510.0	45.6	44.4	-90.00	-2,161.3	324.4	879.6	790.7	88.90	9.894	
9,500.0	7,510.0	9,448.4	7,510.0	47.4	46.2	-90.00	-2,261.3	324.8	879.6	787.1	92.49	9.510	
9,600.0	7,510.0	9,548.4	7,510.0	49.2	48.0	-90.00	-2,361.3	325.2	879.6	783.5	96.10	9.152	
9,700.0	7,510.0	9,648.4	7,510.0	50.9	49.8	-90.00	-2,461.3	325.5	879.6	779.8	99.73	8.819	
9,800.0	7,510.0	9,748.4	7,510.0	52.7	51.6	-90.00	-2,561.3	325.9	879.6	776.2	103.38	8.508	
9,900.0	7,510.0	9,848.4	7,510.0	54.5	53.5	-90.00	-2,661.3	326.3	879.6	772.5	107.04	8.217	
10,000.0	7,510.0	9,948.4	7,510.0	56.3	55.3	-90.00	-2,761.3	326.7	879.6	768.9	110.71	7.945	
10,100.0	7,510.0	10,048.4	7,510.0	58.2	57.1	-90.00	-2,861.3	327.1	879.6	765.2	114.40	7.689	
10,200.0	7,510.0	10,148.4	7,510.0	60.0	59.0	-90.00	-2,961.3	327.4	879.6	761.5	118.09	7.448	

CC - Min centre to center distance or convergent point, SF - min separation factor, ES - min ellipse separation

<b>Company:</b>	Synergy Resources	<b>Local Co-ordinate Reference:</b>	Well SRC Gies T-15-22CHZ
<b>Project:</b>	SEC.15-T7N-R65W	<b>TVD Reference:</b>	WELL @ 4851.0ft (RKB - 13')
<b>Reference Site:</b>	SRC Gies Pad Sec.15-T7N-R65W	<b>MD Reference:</b>	WELL @ 4851.0ft (RKB - 13')
<b>Site Error:</b>	0.0ft	<b>North Reference:</b>	True
<b>Reference Well:</b>	SRC Gies T-15-22CHZ	<b>Survey Calculation Method:</b>	Minimum Curvature
<b>Well Error:</b>	0.0ft	<b>Output errors are at</b>	2.00 sigma
<b>Reference Wellbore</b>	Wellbore #1	<b>Database:</b>	landmark
<b>Reference Design:</b>	Plan #1 (5-7-14)	<b>Offset TVD Reference:</b>	Offset Datum

<b>Offset Design</b> SRC Gies Pad Sec.15-T7N-R65W - SRC Gies 44-15-22CHZ - Wellbore #1 - Plan #1 (5-7-14)												<b>Offset Site Error:</b>	0.0 ft
Survey Program: 0-MWD												<b>Offset Well Error:</b>	0.0 ft
Reference		Offset		Semi Major Axis			Distance						
Measured Depth (ft)	Vertical Depth (ft)	Measured Depth (ft)	Vertical Depth (ft)	Reference (ft)	Offset (ft)	Highside Toolface (°)	Offset Wellbore Centre +N/-S (ft)	+E/-W (ft)	Between Centres (ft)	Between Ellipses (ft)	Minimum Separation (ft)	Separation Factor	Warning
10,300.0	7,510.0	10,248.4	7,510.0	61.8	60.8	-90.00	-3,061.3	327.8	879.6	757.8	121.80	7.222	
10,400.0	7,510.0	10,348.4	7,510.0	63.6	62.7	-90.00	-3,161.3	328.2	879.6	754.1	125.51	7.008	
10,500.0	7,510.0	10,448.4	7,510.0	65.5	64.5	-90.00	-3,261.3	328.6	879.6	750.4	129.23	6.806	
10,600.0	7,510.0	10,548.4	7,510.0	67.3	66.4	-90.00	-3,361.3	329.0	879.6	746.6	132.96	6.616	
10,700.0	7,510.0	10,648.4	7,510.0	69.2	68.3	-90.00	-3,461.3	329.4	879.6	742.9	136.70	6.435	
10,800.0	7,510.0	10,748.4	7,510.0	71.0	70.1	-90.00	-3,561.3	329.7	879.6	739.2	140.44	6.263	
10,900.0	7,510.0	10,848.4	7,510.0	72.9	72.0	-90.00	-3,661.3	330.1	879.6	735.4	144.19	6.101	
11,000.0	7,510.0	10,948.4	7,510.0	74.8	73.9	-90.00	-3,761.3	330.5	879.6	731.7	147.94	5.946	
11,100.0	7,510.0	11,048.4	7,510.0	76.6	75.8	-90.00	-3,861.3	330.9	879.6	727.9	151.70	5.799	
11,200.0	7,510.0	11,148.4	7,510.0	78.5	77.6	-90.00	-3,961.3	331.3	879.6	724.2	155.46	5.658	
11,300.0	7,510.0	11,248.4	7,510.0	80.4	79.5	-90.00	-4,061.3	331.7	879.6	720.4	159.22	5.524	
11,400.0	7,510.0	11,348.4	7,510.0	82.2	81.4	-90.00	-4,161.3	332.0	879.6	716.6	163.00	5.397	
11,500.0	7,510.0	11,448.4	7,510.0	84.1	83.3	-90.00	-4,261.3	332.4	879.6	712.9	166.77	5.275	
11,600.0	7,510.0	11,548.4	7,510.0	86.0	85.2	-90.00	-4,361.3	332.8	879.6	709.1	170.55	5.158	
11,700.0	7,510.0	11,648.4	7,510.0	87.9	87.1	-90.00	-4,461.3	333.2	879.6	705.3	174.33	5.046	
11,751.8	7,510.0	11,700.2	7,510.0	88.7	88.1	-90.00	-4,513.1	333.4	879.6	703.5	176.10	4.995 SF	

<b>Company:</b>	Synergy Resources	<b>Local Co-ordinate Reference:</b>	Well SRC Gies T-15-22CHZ
<b>Project:</b>	SEC.15-T7N-R65W	<b>TVD Reference:</b>	WELL @ 4851.0ft (RKB - 13')
<b>Reference Site:</b>	SRC Gies Pad Sec.15-T7N-R65W	<b>MD Reference:</b>	WELL @ 4851.0ft (RKB - 13')
<b>Site Error:</b>	0.0ft	<b>North Reference:</b>	True
<b>Reference Well:</b>	SRC Gies T-15-22CHZ	<b>Survey Calculation Method:</b>	Minimum Curvature
<b>Well Error:</b>	0.0ft	<b>Output errors are at</b>	2.00 sigma
<b>Reference Wellbore</b>	Wellbore #1	<b>Database:</b>	landmark
<b>Reference Design:</b>	Plan #1 (5-7-14)	<b>Offset TVD Reference:</b>	Offset Datum

Offset Design													Offset Site Error:	0.0 ft
Survey Program: 0-MWD													Offset Well Error:	0.0 ft
Reference		Offset		Semi Major Axis			Distance							Warning
Measured Depth (ft)	Vertical Depth (ft)	Measured Depth (ft)	Vertical Depth (ft)	Reference (ft)	Offset (ft)	Highside Toolface (°)	Offset Wellbore Centre +N/-S (ft)	+E/-W (ft)	Between Centres (ft)	Between Ellipses (ft)	Minimum Separation (ft)	Separation Factor		
0.0	0.0	0.0	0.0	0.0	0.0	91.68	-2.9	99.7	99.8					
100.0	100.0	100.0	100.0	0.1	0.1	91.68	-2.9	99.7	99.8	99.6	0.22	443.946		
200.0	200.0	200.0	200.0	0.3	0.3	91.68	-2.9	99.7	99.8	99.1	0.67	147.982		
300.0	300.0	300.0	300.0	0.6	0.6	91.68	-2.9	99.7	99.8	98.7	1.12	88.789		
400.0	400.0	400.0	400.0	0.8	0.8	91.68	-2.9	99.7	99.8	98.2	1.57	63.421		
500.0	500.0	500.0	500.0	1.0	1.0	91.68	-2.9	99.7	99.8	97.8	2.02	49.327		
600.0	600.0	600.0	600.0	1.2	1.2	91.68	-2.9	99.7	99.8	97.3	2.47	40.359 CC, ES		
700.0	700.0	696.5	696.5	1.4	1.4	-178.54	-3.0	101.4	103.2	100.3	2.89	35.701		
800.0	799.8	792.4	792.2	1.7	1.6	-178.51	-3.3	106.2	113.5	110.2	3.30	34.355 SF		
900.0	899.5	886.9	886.4	1.9	1.9	-178.47	-3.9	114.1	130.5	126.7	3.73	35.018		
1,000.0	998.8	983.7	982.7	2.1	2.1	-178.43	-4.5	124.3	151.9	147.7	4.15	36.587		
1,100.0	1,098.2	1,081.4	1,079.8	2.4	2.3	-178.41	-5.2	134.6	173.4	168.8	4.58	37.890		
1,200.0	1,197.6	1,179.1	1,176.9	2.7	2.6	-178.39	-5.9	145.0	194.9	189.9	5.01	38.927		
1,300.0	1,297.0	1,276.7	1,274.1	3.0	2.9	-178.38	-6.6	155.3	216.4	210.9	5.44	39.759		
1,400.0	1,396.4	1,374.4	1,371.2	3.2	3.1	-178.37	-7.3	165.7	237.9	232.0	5.88	40.436		
1,500.0	1,495.8	1,472.1	1,468.3	3.5	3.4	-178.36	-8.0	176.0	259.4	253.0	6.33	40.998		
1,600.0	1,595.2	1,569.7	1,565.4	3.8	3.7	-178.35	-8.6	186.4	280.9	274.1	6.77	41.458		
1,700.0	1,694.6	1,667.4	1,662.5	4.1	4.0	-178.34	-9.3	196.7	302.4	295.1	7.22	41.862		
1,800.0	1,794.0	1,765.0	1,759.6	4.4	4.3	-178.33	-10.0	207.1	323.9	316.2	7.67	42.203		
1,900.0	1,893.4	1,862.7	1,856.7	4.7	4.6	-178.33	-10.7	217.4	345.4	337.2	8.13	42.497		
2,000.0	1,992.8	1,960.4	1,953.8	5.0	4.8	-178.32	-11.4	227.8	366.9	358.3	8.58	42.754		
2,100.0	2,092.2	2,058.0	2,050.9	5.3	5.1	-178.32	-12.0	238.1	388.4	379.3	9.04	42.979		
2,200.0	2,191.5	2,155.7	2,148.0	5.6	5.4	-178.32	-12.7	248.5	409.9	400.4	9.49	43.178		
2,300.0	2,290.9	2,253.3	2,245.1	5.9	5.7	-178.31	-13.4	258.8	431.4	421.4	9.95	43.356		
2,400.0	2,390.3	2,351.0	2,342.2	6.2	6.0	-178.31	-14.1	269.2	452.9	442.5	10.41	43.514		
2,500.0	2,489.7	2,448.7	2,439.4	6.5	6.3	-178.31	-14.8	279.5	474.4	463.5	10.87	43.657		
2,600.0	2,589.1	2,546.3	2,536.5	6.8	6.6	-178.30	-15.5	289.9	495.9	484.6	11.33	43.785		
2,700.0	2,688.5	2,644.0	2,633.6	7.1	6.9	-178.30	-16.1	300.3	517.4	505.6	11.78	43.902		
2,800.0	2,787.9	2,741.6	2,730.7	7.4	7.2	-178.30	-16.8	310.6	538.9	526.6	12.25	44.008		
2,900.0	2,887.3	2,839.3	2,827.8	7.8	7.4	-178.30	-17.5	321.0	560.4	547.7	12.71	44.105		
3,000.0	2,986.7	2,937.0	2,924.9	8.1	7.7	-178.30	-18.2	331.3	581.9	568.7	13.17	44.195		
3,100.0	3,086.1	3,034.6	3,022.0	8.4	8.0	-178.29	-18.9	341.7	603.4	589.8	13.63	44.276		
3,200.0	3,185.5	3,132.3	3,119.1	8.7	8.3	-178.29	-19.6	352.0	624.9	610.8	14.09	44.352		
3,300.0	3,284.9	3,230.0	3,216.2	9.0	8.6	-178.29	-20.2	362.4	646.4	631.8	14.55	44.422		
3,400.0	3,384.2	3,327.6	3,313.3	9.3	8.9	-178.29	-20.9	372.7	667.9	652.9	15.01	44.487		
3,500.0	3,483.6	3,425.3	3,410.4	9.6	9.2	-178.29	-21.6	383.1	689.4	673.9	15.48	44.547		
3,600.0	3,583.0	3,522.9	3,507.6	9.9	9.5	-178.29	-22.3	393.4	710.9	695.0	15.94	44.603		
3,700.0	3,682.4	3,620.6	3,604.7	10.2	9.8	-178.29	-23.0	403.8	732.4	716.0	16.40	44.656		
3,800.0	3,781.8	3,718.3	3,701.8	10.5	10.1	-178.28	-23.7	414.1	753.9	737.0	16.86	44.704		
3,900.0	3,881.2	3,815.9	3,798.9	10.8	10.4	-178.28	-24.3	424.5	775.4	758.1	17.33	44.750		
4,000.0	3,980.6	3,913.6	3,896.0	11.1	10.7	-178.28	-25.0	434.8	796.9	779.1	17.79	44.793		
4,100.0	4,080.0	4,011.2	3,993.1	11.4	11.0	-178.28	-25.7	445.2	818.4	800.1	18.25	44.834		
4,200.0	4,179.4	4,108.9	4,090.2	11.7	11.2	-178.28	-26.4	455.5	839.9	821.2	18.72	44.872		
4,300.0	4,278.8	4,206.6	4,187.3	12.0	11.5	-178.28	-27.1	465.9	861.4	842.2	19.18	44.908		
4,400.0	4,378.2	4,304.2	4,284.4	12.3	11.8	-178.28	-27.8	476.2	882.9	863.3	19.65	44.942		
4,500.0	4,477.5	4,401.9	4,381.5	12.7	12.1	-178.28	-28.4	486.6	904.4	884.3	20.11	44.973		
4,600.0	4,576.9	4,499.6	4,478.6	13.0	12.4	-178.28	-29.1	496.9	925.9	905.3	20.57	45.004		
4,700.0	4,676.3	4,597.2	4,575.7	13.3	12.7	-178.28	-29.8	507.3	947.4	926.4	21.04	45.032		
4,800.0	4,775.7	4,694.9	4,672.9	13.6	13.0	-178.28	-30.5	517.6	968.9	947.4	21.50	45.059		
4,900.0	4,875.1	4,831.9	4,809.3	13.9	13.3	-178.28	-31.3	529.9	988.9	966.9	22.02	44.915		

<b>Company:</b>	Synergy Resources	<b>Local Co-ordinate Reference:</b>	Well SRC Gies T-15-22CHZ
<b>Project:</b>	SEC.15-T7N-R65W	<b>TVD Reference:</b>	WELL @ 4851.0ft (RKB - 13')
<b>Reference Site:</b>	SRC Gies Pad Sec.15-T7N-R65W	<b>MD Reference:</b>	WELL @ 4851.0ft (RKB - 13')
<b>Site Error:</b>	0.0ft	<b>North Reference:</b>	True
<b>Reference Well:</b>	SRC Gies T-15-22CHZ	<b>Survey Calculation Method:</b>	Minimum Curvature
<b>Well Error:</b>	0.0ft	<b>Output errors are at</b>	2.00 sigma
<b>Reference Wellbore</b>	Wellbore #1	<b>Database:</b>	landmark
<b>Reference Design:</b>	Plan #1 (5-7-14)	<b>Offset TVD Reference:</b>	Offset Datum

Offset Design													Offset Site Error:	0.0 ft
Survey Program: 0-MWD													Offset Well Error:	0.0 ft
Reference		Offset		Semi Major Axis			Distance							Warning
Measured Depth (ft)	Vertical Depth (ft)	Measured Depth (ft)	Vertical Depth (ft)	Reference (ft)	Offset (ft)	Highside Toolface (°)	Offset Wellbore Centre +N/-S (ft)	+E/-W (ft)	Between Centres (ft)	Between Ellipses (ft)	Minimum Separation (ft)	Separation Factor		
0.0	0.0	0.0	0.0	0.0	0.0	92.09	-1.5	40.0	40.0					
100.0	100.0	100.0	100.0	0.1	0.1	92.09	-1.5	40.0	40.0	39.8	0.22	178.115		
200.0	200.0	200.0	200.0	0.3	0.3	92.09	-1.5	40.0	40.0	39.4	0.67	59.372		
300.0	300.0	300.0	300.0	0.6	0.6	92.09	-1.5	40.0	40.0	38.9	1.12	35.623		
400.0	400.0	400.0	400.0	0.8	0.8	92.09	-1.5	40.0	40.0	38.5	1.57	25.445		
500.0	500.0	500.0	500.0	1.0	1.0	92.09	-1.5	40.0	40.0	38.0	2.02	19.791		
600.0	600.0	600.0	600.0	1.2	1.2	92.09	-1.5	40.0	40.0	37.6	2.47	16.192 CC, ES		
700.0	700.0	700.0	700.0	1.4	1.5	-178.21	-1.5	40.0	41.8	38.9	2.91	14.357		
800.0	799.8	799.8	799.8	1.7	1.7	-178.41	-1.5	40.0	47.0	43.7	3.34	14.078		
900.0	899.5	899.5	899.5	1.9	1.9	-178.65	-1.5	40.0	55.7	52.0	3.77	14.774		
1,000.0	998.8	998.8	998.8	2.1	2.1	-178.88	-1.5	40.0	66.7	62.5	4.21	15.851		
1,100.0	1,098.2	1,098.2	1,098.2	2.4	2.4	-179.03	-1.5	40.0	77.7	73.1	4.65	16.718		
1,200.0	1,197.6	1,197.6	1,197.6	2.7	2.6	-179.15	-1.5	40.0	88.7	83.6	5.09	17.422		
1,300.0	1,297.0	1,297.0	1,297.0	3.0	2.8	-179.25	-1.5	40.0	99.7	94.2	5.54	18.005		
1,400.0	1,396.4	1,396.4	1,396.4	3.2	3.0	-179.32	-1.5	40.0	110.7	104.8	5.99	18.494		
1,500.0	1,495.8	1,500.0	1,500.0	3.5	3.2	-179.32	-1.6	38.3	120.1	113.7	6.43	18.675		
1,600.0	1,595.2	1,603.9	1,603.7	3.8	3.5	-179.20	-1.9	32.8	125.8	119.0	6.86	18.341		
1,700.0	1,694.6	1,703.8	1,703.4	4.1	3.7	-179.03	-2.3	26.0	130.1	122.8	7.29	17.837		
1,800.0	1,794.0	1,803.7	1,803.1	4.4	3.9	-178.88	-2.7	19.2	134.4	126.6	7.73	17.380		
1,900.0	1,893.4	1,903.6	1,902.8	4.7	4.1	-178.73	-3.1	12.4	138.6	130.4	8.17	16.965		
2,000.0	1,992.8	2,003.5	2,002.4	5.0	4.3	-178.60	-3.5	5.7	142.9	134.3	8.61	16.586		
2,100.0	2,092.2	2,103.4	2,102.1	5.3	4.6	-178.47	-3.9	-1.1	147.1	138.1	9.06	16.240		
2,200.0	2,191.5	2,203.4	2,201.8	5.6	4.8	-178.35	-4.3	-7.9	151.4	141.9	9.51	15.923		
2,300.0	2,290.9	2,303.3	2,301.5	5.9	5.0	-178.23	-4.7	-14.7	155.6	145.7	9.96	15.631		
2,400.0	2,390.3	2,403.2	2,401.1	6.2	5.3	-178.13	-5.1	-21.5	159.9	149.5	10.41	15.362		
2,500.0	2,489.7	2,503.1	2,500.8	6.5	5.5	-178.02	-5.5	-28.2	164.2	153.3	10.86	15.113		
2,600.0	2,589.1	2,603.0	2,600.5	6.8	5.7	-177.93	-6.0	-35.0	168.4	157.1	11.32	14.882		
2,700.0	2,688.5	2,702.9	2,700.2	7.1	6.0	-177.83	-6.4	-41.8	172.7	160.9	11.77	14.668		
2,800.0	2,787.9	2,802.8	2,799.9	7.4	6.2	-177.75	-6.8	-48.6	176.9	164.7	12.23	14.468		
2,900.0	2,887.3	2,902.7	2,899.5	7.8	6.5	-177.66	-7.2	-55.4	181.2	168.5	12.69	14.282		
3,000.0	2,986.7	3,002.6	2,999.2	8.1	6.7	-177.58	-7.6	-62.1	185.4	172.3	13.14	14.108		
3,100.0	3,086.1	3,102.5	3,098.9	8.4	7.0	-177.50	-8.0	-68.9	189.7	176.1	13.60	13.945		
3,200.0	3,185.5	3,202.4	3,198.6	8.7	7.2	-177.43	-8.4	-75.7	194.0	179.9	14.06	13.792		
3,300.0	3,284.9	3,302.3	3,298.2	9.0	7.5	-177.36	-8.8	-82.5	198.2	183.7	14.53	13.648		
3,400.0	3,384.2	3,402.3	3,397.9	9.3	7.7	-177.29	-9.2	-89.3	202.5	187.5	14.99	13.512		
3,500.0	3,483.6	3,502.2	3,497.6	9.6	8.0	-177.23	-9.6	-96.0	206.8	191.3	15.45	13.384		
3,600.0	3,583.0	3,602.1	3,597.3	9.9	8.2	-177.17	-10.0	-102.8	211.0	195.1	15.91	13.263		
3,700.0	3,682.4	3,702.0	3,697.0	10.2	8.5	-177.11	-10.4	-109.6	215.3	198.9	16.37	13.148		
3,800.0	3,781.8	3,801.9	3,796.6	10.5	8.7	-177.05	-10.8	-116.4	219.5	202.7	16.84	13.040		
3,900.0	3,881.2	3,895.2	3,889.8	10.8	8.9	-177.04	-11.1	-121.5	225.1	207.9	17.27	13.039		
4,000.0	3,980.6	3,987.5	3,982.0	11.1	9.1	-177.11	-11.3	-123.5	233.9	216.3	17.68	13.232		
4,100.0	4,080.0	4,085.4	4,080.0	11.4	9.3	-177.24	-11.3	-123.6	244.9	226.8	18.11	13.521		
4,200.0	4,179.4	4,184.8	4,179.4	11.7	9.5	-177.35	-11.3	-123.6	255.9	237.3	18.55	13.791		
4,300.0	4,278.8	4,284.2	4,278.8	12.0	9.7	-177.46	-11.3	-123.6	266.9	247.9	19.00	14.047		
4,400.0	4,378.2	4,383.6	4,378.2	12.3	9.9	-177.56	-11.3	-123.6	277.9	258.5	19.45	14.291		
4,500.0	4,477.5	4,483.0	4,477.5	12.7	10.1	-177.66	-11.3	-123.6	288.9	269.0	19.89	14.524		
4,600.0	4,576.9	4,582.4	4,576.9	13.0	10.3	-177.74	-11.3	-123.6	299.9	279.6	20.34	14.746		
4,700.0	4,676.3	4,681.8	4,676.3	13.3	10.5	-177.82	-11.3	-123.6	310.9	290.1	20.79	14.958		
4,800.0	4,775.7	4,781.2	4,775.7	13.6	10.7	-177.90	-11.3	-123.6	321.9	300.7	21.23	15.160		
4,900.0	4,875.1	4,880.5	4,875.1	13.9	10.9	-177.97	-11.3	-123.6	332.9	311.2	21.68	15.354		
5,000.0	4,974.5	4,979.9	4,974.5	14.2	11.1	-178.03	-11.3	-123.6	343.9	321.8	22.13	15.540		
5,100.0	5,073.9	5,079.3	5,073.9	14.5	11.3	-178.09	-11.3	-123.6	355.0	332.4	22.58	15.718		

CC - Min centre to center distance or convergent point, SF - min separation factor, ES - min ellipse separation

<b>Company:</b>	Synergy Resources	<b>Local Co-ordinate Reference:</b>	Well SRC Gies T-15-22CHZ
<b>Project:</b>	SEC.15-T7N-R65W	<b>TVD Reference:</b>	WELL @ 4851.0ft (RKB - 13')
<b>Reference Site:</b>	SRC Gies Pad Sec.15-T7N-R65W	<b>MD Reference:</b>	WELL @ 4851.0ft (RKB - 13')
<b>Site Error:</b>	0.0ft	<b>North Reference:</b>	True
<b>Reference Well:</b>	SRC Gies T-15-22CHZ	<b>Survey Calculation Method:</b>	Minimum Curvature
<b>Well Error:</b>	0.0ft	<b>Output errors are at</b>	2.00 sigma
<b>Reference Wellbore</b>	Wellbore #1	<b>Database:</b>	landmark
<b>Reference Design:</b>	Plan #1 (5-7-14)	<b>Offset TVD Reference:</b>	Offset Datum

Offset Design SRC Gies Pad Sec.15-T7N-R65W - SRC Gies D-15-22CHZ - Wellbore #1 - Plan #1 (5-7-14)													Offset Site Error:	0.0ft
Survey Program: 0-MWD													Offset Well Error:	0.0ft
Reference		Offset		Semi Major Axis			Distance							Warning
Measured Depth (ft)	Vertical Depth (ft)	Measured Depth (ft)	Vertical Depth (ft)	Reference (ft)	Offset (ft)	Highside Toolface (°)	Offset Wellbore Centre +N/-S (ft)	+E/-W (ft)	Between Centres (ft)	Between Ellipses (ft)	Minimum Separation (ft)	Separation Factor		
5,200.0	5,173.3	5,178.7	5,173.3	14.8	11.5	-178.15	-11.3	-123.6	366.0	342.9	23.03	15.889		
5,300.0	5,272.7	5,278.1	5,272.7	15.1	11.8	-178.20	-11.3	-123.6	377.0	353.5	23.48	16.053		
5,400.0	5,372.1	5,377.5	5,372.1	15.4	12.0	-178.26	-11.3	-123.6	388.0	364.0	23.93	16.210		
5,500.0	5,471.5	5,476.9	5,471.5	15.7	12.2	-178.30	-11.3	-123.6	399.0	374.6	24.39	16.362		
5,600.0	5,570.9	5,576.3	5,570.9	16.0	12.4	-178.35	-11.3	-123.6	410.0	385.2	24.84	16.507		
5,700.0	5,670.2	5,675.7	5,670.2	16.3	12.6	-178.39	-11.3	-123.6	421.0	395.7	25.29	16.647		
5,800.0	5,769.8	5,775.2	5,769.8	16.6	12.8	-178.43	-11.3	-123.6	430.8	405.0	25.74	16.737		
5,900.0	5,869.6	5,875.0	5,869.6	16.8	13.0	-178.46	-11.3	-123.6	437.0	410.9	26.13	16.727		
6,000.0	5,969.5	5,974.9	5,969.5	16.9	13.2	-178.47	-11.3	-123.6	439.9	413.4	26.49	16.605		
6,100.0	6,069.5	6,074.9	6,069.5	17.1	13.4	91.75	-11.3	-123.6	440.0	413.1	26.88	15.198		
6,200.0	6,169.5	6,174.9	6,169.5	17.3	13.7	91.75	-11.3	-123.6	440.0	412.7	27.29	16.121		
6,300.0	6,269.5	6,274.9	6,269.5	17.4	13.9	91.75	-11.3	-123.6	440.0	412.3	27.71	15.881		
6,400.0	6,369.5	6,374.9	6,369.5	17.6	14.1	91.75	-11.3	-123.6	440.0	411.9	28.12	15.647		
6,500.0	6,469.5	6,474.9	6,469.5	17.8	14.3	91.75	-11.3	-123.6	440.0	411.5	28.54	15.419		
6,600.0	6,569.5	6,574.9	6,569.5	17.9	14.5	91.75	-11.3	-123.6	440.0	411.1	28.95	15.198		
6,700.0	6,669.5	6,674.9	6,669.5	18.1	14.7	91.75	-11.3	-123.6	440.0	410.6	29.37	14.982		
6,800.0	6,769.5	6,774.9	6,769.5	18.3	14.9	91.75	-11.3	-123.6	440.0	410.2	29.79	14.772		
6,900.0	6,869.4	6,873.4	6,867.8	18.4	15.1	-88.04	-15.1	-123.6	440.0	409.8	30.17	14.584		
7,000.0	6,967.8	6,971.3	6,964.3	18.6	15.3	-88.09	-31.8	-123.5	440.0	409.5	30.53	14.410		
7,100.0	7,062.8	7,069.4	7,057.6	18.8	15.5	-88.17	-61.6	-123.4	440.0	409.1	30.93	14.226		
7,200.0	7,152.5	7,167.5	7,146.1	19.0	15.7	-88.29	-103.9	-123.2	440.0	408.6	31.39	14.014		
7,300.0	7,235.3	7,265.8	7,228.0	19.2	16.0	-88.44	-157.9	-123.0	439.9	407.9	31.99	13.752		
7,400.0	7,309.5	7,364.2	7,302.0	19.5	16.4	-88.62	-222.8	-122.8	439.9	407.1	32.78	13.419		
7,500.0	7,373.6	7,462.8	7,366.5	19.9	16.9	-88.83	-297.3	-122.5	439.8	406.0	33.83	13.004		
7,600.0	7,426.5	7,561.7	7,420.2	20.4	17.5	-89.06	-380.2	-122.2	439.8	404.7	35.17	12.507		
7,700.0	7,467.1	7,660.8	7,462.1	21.1	18.3	-89.31	-469.9	-121.8	439.8	403.0	36.82	11.944		
7,800.0	7,494.5	7,760.2	7,491.3	21.9	19.3	-89.57	-564.9	-121.5	439.8	401.0	38.79	11.338		
7,900.0	7,508.3	7,859.9	7,507.1	22.9	20.4	-89.84	-663.2	-121.1	439.8	398.7	41.03	10.719		
7,943.0	7,510.6	7,902.8	7,509.7	23.3	20.9	-89.88	-706.1	-120.9	439.8	397.7	42.07	10.453		
8,000.0	7,510.0	7,959.8	7,510.0	24.0	21.6	-90.00	-763.0	-120.7	439.8	396.3	43.49	10.112		
8,100.0	7,510.0	8,059.8	7,510.0	25.2	22.9	-90.00	-863.0	-120.3	439.8	393.6	46.13	9.533		
8,200.0	7,510.0	8,159.8	7,510.0	26.5	24.3	-90.00	-963.0	-120.0	439.8	390.8	48.93	8.988		
8,300.0	7,510.0	8,259.8	7,510.0	27.8	25.8	-90.00	-1,063.0	-119.6	439.8	387.9	51.86	8.479		
8,400.0	7,510.0	8,359.8	7,510.0	29.3	27.3	-90.00	-1,163.0	-119.2	439.8	384.9	54.91	8.009		
8,500.0	7,510.0	8,459.8	7,510.0	30.7	28.9	-90.00	-1,263.0	-118.8	439.8	381.7	58.05	7.575		
8,600.0	7,510.0	8,559.8	7,510.0	32.3	30.5	-90.00	-1,363.0	-118.4	439.8	378.5	61.28	7.177		
8,700.0	7,510.0	8,659.8	7,510.0	33.9	32.1	-90.00	-1,463.0	-118.1	439.8	375.2	64.57	6.811		
8,800.0	7,510.0	8,759.8	7,510.0	35.5	33.8	-90.00	-1,563.0	-117.7	439.8	371.9	67.92	6.475		
8,900.0	7,510.0	8,859.8	7,510.0	37.1	35.5	-90.00	-1,663.0	-117.3	439.8	368.5	71.32	6.166		
9,000.0	7,510.0	8,959.8	7,510.0	38.8	37.2	-90.00	-1,763.0	-116.9	439.8	365.0	74.77	5.882		
9,100.0	7,510.0	9,059.8	7,510.0	40.5	39.0	-90.00	-1,863.0	-116.5	439.8	361.5	78.25	5.620		
9,200.0	7,510.0	9,159.8	7,510.0	42.2	40.7	-90.00	-1,963.0	-116.2	439.8	358.0	81.77	5.378		
9,300.0	7,510.0	9,259.8	7,510.0	43.9	42.5	-90.00	-2,063.0	-115.8	439.8	354.5	85.31	5.155		
9,400.0	7,510.0	9,359.8	7,510.0	45.6	44.3	-90.00	-2,163.0	-115.4	439.8	350.9	88.88	4.948		
9,500.0	7,510.0	9,459.8	7,510.0	47.4	46.1	-90.00	-2,263.0	-115.0	439.8	347.3	92.47	4.756		
9,600.0	7,510.0	9,559.8	7,510.0	49.2	47.9	-90.00	-2,363.0	-114.6	439.8	343.7	96.09	4.577		
9,700.0	7,510.0	9,659.8	7,510.0	50.9	49.7	-90.00	-2,463.0	-114.3	439.8	340.1	99.72	4.410		
9,800.0	7,510.0	9,759.8	7,510.0	52.7	51.5	-90.00	-2,563.0	-113.9	439.8	336.4	103.36	4.255		
9,900.0	7,510.0	9,859.8	7,510.0	54.5	53.4	-90.00	-2,663.0	-113.5	439.8	332.8	107.03	4.109		
10,000.0	7,510.0	9,959.8	7,510.0	56.3	55.2	-90.00	-2,763.0	-113.1	439.8	329.1	110.70	3.973		
10,100.0	7,510.0	10,059.8	7,510.0	58.2	57.0	-90.00	-2,863.0	-112.7	439.8	325.4	114.38	3.845		
10,200.0	7,510.0	10,159.8	7,510.0	60.0	58.9	-90.00	-2,963.0	-112.3	439.8	321.7	118.08	3.725		

CC - Min centre to center distance or convergent point, SF - min separation factor, ES - min ellipse separation

<b>Company:</b>	Synergy Resources	<b>Local Co-ordinate Reference:</b>	Well SRC Gies T-15-22CHZ
<b>Project:</b>	SEC.15-T7N-R65W	<b>TVD Reference:</b>	WELL @ 4851.0ft (RKB - 13')
<b>Reference Site:</b>	SRC Gies Pad Sec.15-T7N-R65W	<b>MD Reference:</b>	WELL @ 4851.0ft (RKB - 13')
<b>Site Error:</b>	0.0ft	<b>North Reference:</b>	True
<b>Reference Well:</b>	SRC Gies T-15-22CHZ	<b>Survey Calculation Method:</b>	Minimum Curvature
<b>Well Error:</b>	0.0ft	<b>Output errors are at</b>	2.00 sigma
<b>Reference Wellbore</b>	Wellbore #1	<b>Database:</b>	landmark
<b>Reference Design:</b>	Plan #1 (5-7-14)	<b>Offset TVD Reference:</b>	Offset Datum

Offset Design													Offset Site Error:	0.0 ft
SRC Gies Pad Sec.15-T7N-R65W - SRC Gies D-15-22CHZ - Wellbore #1 - Plan #1 (5-7-14)													Offset Well Error:	0.0 ft
Survey Program: 0-MWD														
Reference		Offset		Semi Major Axis			Distance							
Measured Depth (ft)	Vertical Depth (ft)	Measured Depth (ft)	Vertical Depth (ft)	Reference (ft)	Offset (ft)	Highside Toolface (°)	Offset Wellbore Centre +N/-S (ft)	+E/-W (ft)	Between Centres (ft)	Between Ellipses (ft)	Minimum Separation (ft)	Separation Factor	Warning	
10,300.0	7,510.0	10,259.8	7,510.0	61.8	60.7	-90.00	-3,063.0	-112.0	439.8	318.0	121.78	3.611		
10,400.0	7,510.0	10,359.8	7,510.0	63.6	62.6	-90.00	-3,163.0	-111.6	439.8	314.3	125.50	3.504		
10,500.0	7,510.0	10,459.8	7,510.0	65.5	64.5	-90.00	-3,263.0	-111.2	439.8	310.6	129.22	3.403		
10,600.0	7,510.0	10,559.8	7,510.0	67.3	66.3	-90.00	-3,363.0	-110.8	439.8	306.9	132.95	3.308		
10,700.0	7,510.0	10,659.8	7,510.0	69.2	68.2	-90.00	-3,463.0	-110.4	439.8	303.1	136.69	3.218		
10,800.0	7,510.0	10,759.8	7,510.0	71.0	70.1	-90.00	-3,563.0	-110.1	439.8	299.4	140.43	3.132		
10,900.0	7,510.0	10,859.8	7,510.0	72.9	71.9	-90.00	-3,663.0	-109.7	439.8	295.6	144.18	3.050		
11,000.0	7,510.0	10,959.8	7,510.0	74.8	73.8	-90.00	-3,763.0	-109.3	439.8	291.9	147.93	2.973		
11,100.0	7,510.0	11,059.8	7,510.0	76.6	75.7	-90.00	-3,863.0	-108.9	439.8	288.1	151.69	2.899		
11,200.0	7,510.0	11,159.8	7,510.0	78.5	77.6	-90.00	-3,963.0	-108.5	439.8	284.4	155.45	2.829		
11,300.0	7,510.0	11,259.8	7,510.0	80.4	79.5	-90.00	-4,063.0	-108.2	439.8	280.6	159.22	2.762		
11,400.0	7,510.0	11,359.8	7,510.0	82.2	81.3	-90.00	-4,163.0	-107.8	439.8	276.8	162.99	2.698		
11,500.0	7,510.0	11,459.8	7,510.0	84.1	83.2	-90.00	-4,263.0	-107.4	439.8	273.1	166.76	2.637		
11,600.0	7,510.0	11,559.8	7,510.0	86.0	85.1	-90.00	-4,363.0	-107.0	439.8	269.3	170.54	2.579		
11,700.0	7,510.0	11,659.8	7,510.0	87.9	87.0	-90.00	-4,463.0	-106.6	439.8	265.5	174.32	2.523		
11,751.8	7,510.0	11,711.6	7,510.0	88.7	88.0	-90.00	-4,514.8	-106.4	439.8	263.7	176.09	2.498 SF		

<b>Company:</b>	Synergy Resources	<b>Local Co-ordinate Reference:</b>	Well SRC Gies T-15-22CHZ
<b>Project:</b>	SEC.15-T7N-R65W	<b>TVD Reference:</b>	WELL @ 4851.0ft (RKB - 13')
<b>Reference Site:</b>	SRC Gies Pad Sec.15-T7N-R65W	<b>MD Reference:</b>	WELL @ 4851.0ft (RKB - 13')
<b>Site Error:</b>	0.0ft	<b>North Reference:</b>	True
<b>Reference Well:</b>	SRC Gies T-15-22CHZ	<b>Survey Calculation Method:</b>	Minimum Curvature
<b>Well Error:</b>	0.0ft	<b>Output errors are at</b>	2.00 sigma
<b>Reference Wellbore</b>	Wellbore #1	<b>Database:</b>	landmark
<b>Reference Design:</b>	Plan #1 (5-7-14)	<b>Offset TVD Reference:</b>	Offset Datum

Offset Design													Offset Site Error:	0.0ft
Survey Program: 0-MWD													Offset Well Error:	0.0ft
Reference		Offset		Semi Major Axis			Distance							Warning
Measured Depth (ft)	Vertical Depth (ft)	Measured Depth (ft)	Vertical Depth (ft)	Reference (ft)	Offset (ft)	Highside Toolface (°)	Offset Wellbore Centre +N/-S (ft)	+E/-W (ft)	Between Centres (ft)	Between Ellipses (ft)	Minimum Separation (ft)	Separation Factor		
0.0	0.0	0.0	0.0	0.0	0.0	91.75	-1.8	59.7	59.8					
100.0	100.0	100.0	100.0	0.1	0.1	91.75	-1.8	59.7	59.8	59.5	0.22	265.883		
200.0	200.0	200.0	200.0	0.3	0.3	91.75	-1.8	59.7	59.8	59.1	0.67	88.628		
300.0	300.0	300.0	300.0	0.6	0.6	91.75	-1.8	59.7	59.8	58.6	1.12	53.177		
400.0	400.0	400.0	400.0	0.8	0.8	91.75	-1.8	59.7	59.8	58.2	1.57	37.983		
500.0	500.0	500.0	500.0	1.0	1.0	91.75	-1.8	59.7	59.8	57.7	2.02	29.543		
600.0	600.0	600.0	600.0	1.2	1.2	91.75	-1.8	59.7	59.8	57.3	2.47	24.171 CC, ES		
700.0	700.0	700.0	700.0	1.4	1.5	-178.52	-1.8	59.7	61.5	58.6	2.91	21.137		
800.0	799.8	799.8	799.8	1.7	1.7	-178.63	-1.8	59.7	66.7	63.4	3.34	19.986		
900.0	899.5	899.5	899.5	1.9	1.9	-178.79	-1.8	59.7	75.5	71.7	3.77	20.005		
1,000.0	998.8	998.8	998.8	2.1	2.1	-178.94	-1.8	59.7	86.4	82.2	4.21	20.540		
1,100.0	1,098.2	1,097.0	1,097.0	2.4	2.3	-178.82	-2.3	60.7	98.4	93.8	4.62	21.308		
1,200.0	1,197.6	1,196.3	1,196.2	2.7	2.5	-178.67	-2.8	61.9	110.7	105.6	5.03	22.004		
1,300.0	1,297.0	1,295.5	1,295.5	3.0	2.7	-178.54	-3.4	63.2	122.9	117.5	5.45	22.563		
1,400.0	1,396.4	1,394.7	1,394.7	3.2	2.9	-178.44	-3.9	64.4	135.2	129.3	5.87	23.018		
1,500.0	1,495.8	1,494.0	1,493.9	3.5	3.1	-178.36	-4.4	65.6	147.5	141.2	6.30	23.394		
1,600.0	1,595.2	1,593.2	1,593.2	3.8	3.3	-178.29	-5.0	66.9	159.7	153.0	6.74	23.707		
1,700.0	1,694.6	1,692.5	1,692.4	4.1	3.5	-178.23	-5.5	68.1	172.0	164.8	7.17	23.972		
1,800.0	1,794.0	1,791.7	1,791.7	4.4	3.7	-178.17	-6.1	69.3	184.2	176.6	7.61	24.197		
1,900.0	1,893.4	1,891.0	1,890.9	4.7	4.0	-178.13	-6.6	70.6	196.5	188.5	8.06	24.391		
2,000.0	1,992.8	1,990.2	1,990.1	5.0	4.2	-178.09	-7.2	71.8	208.8	200.3	8.50	24.559		
2,100.0	2,092.2	2,089.5	2,089.4	5.3	4.4	-178.05	-7.7	73.0	221.0	212.1	8.95	24.706		
2,200.0	2,191.5	2,188.7	2,188.6	5.6	4.6	-178.02	-8.3	74.3	233.3	223.9	9.39	24.835		
2,300.0	2,290.9	2,288.0	2,287.8	5.9	4.8	-177.99	-8.8	75.5	245.6	235.7	9.84	24.949		
2,400.0	2,390.3	2,387.2	2,387.1	6.2	5.0	-177.96	-9.4	76.7	257.8	247.5	10.29	25.050		
2,500.0	2,489.7	2,486.4	2,486.3	6.5	5.2	-177.94	-9.9	78.0	270.1	259.4	10.74	25.141		
2,600.0	2,589.1	2,585.7	2,585.5	6.8	5.5	-177.92	-10.5	79.2	282.4	271.2	11.19	25.223		
2,700.0	2,688.5	2,684.9	2,684.8	7.1	5.7	-177.90	-11.0	80.4	294.6	283.0	11.65	25.297		
2,800.0	2,787.9	2,784.2	2,784.0	7.4	5.9	-177.88	-11.6	81.7	306.9	294.8	12.10	25.363		
2,900.0	2,887.3	2,883.4	2,883.3	7.8	6.1	-177.86	-12.1	82.9	319.1	306.6	12.55	25.424		
3,000.0	2,986.7	2,982.7	2,982.5	8.1	6.3	-177.85	-12.7	84.1	331.4	318.4	13.01	25.480		
3,100.0	3,086.1	3,081.9	3,081.7	8.4	6.6	-177.83	-13.2	85.4	343.7	330.2	13.46	25.530		
3,200.0	3,185.5	3,181.2	3,181.0	8.7	6.8	-177.82	-13.8	86.6	355.9	342.0	13.92	25.577		
3,300.0	3,284.9	3,280.4	3,280.2	9.0	7.0	-177.80	-14.3	87.8	368.2	353.8	14.37	25.620		
3,400.0	3,384.2	3,379.6	3,379.4	9.3	7.2	-177.79	-14.9	89.1	380.5	365.6	14.83	25.660		
3,500.0	3,483.6	3,478.9	3,478.7	9.6	7.4	-177.78	-15.4	90.3	392.7	377.4	15.28	25.697		
3,600.0	3,583.0	3,578.1	3,577.9	9.9	7.7	-177.77	-16.0	91.5	405.0	389.3	15.74	25.731		
3,700.0	3,682.4	3,677.4	3,677.1	10.2	7.9	-177.76	-16.5	92.8	417.3	401.1	16.20	25.763		
3,800.0	3,781.8	3,776.6	3,776.4	10.5	8.1	-177.75	-17.1	94.0	429.5	412.9	16.65	25.793		
3,900.0	3,881.2	3,875.9	3,875.6	10.8	8.3	-177.74	-17.6	95.2	441.8	424.7	17.11	25.821		
4,000.0	3,980.6	3,977.5	3,977.2	11.1	8.6	-177.74	-18.2	96.5	454.0	436.4	17.57	25.839		
4,100.0	4,080.0	4,080.3	4,080.0	11.4	8.8	-177.79	-18.2	96.5	465.1	447.1	18.02	25.815		
4,200.0	4,179.4	4,179.6	4,179.4	11.7	9.0	-177.84	-18.2	96.5	476.1	457.7	18.45	25.801		
4,300.0	4,278.8	4,279.0	4,278.8	12.0	9.2	-177.89	-18.2	96.5	487.1	468.2	18.89	25.788		
4,400.0	4,378.2	4,378.4	4,378.2	12.3	9.4	-177.93	-18.2	96.5	498.1	478.8	19.33	25.773		
4,500.0	4,477.5	4,477.8	4,477.5	12.7	9.6	-177.98	-18.2	96.5	509.1	489.4	19.77	25.758		
4,600.0	4,576.9	4,577.2	4,576.9	13.0	9.8	-178.02	-18.2	96.5	520.1	499.9	20.21	25.742		
4,700.0	4,676.3	4,676.6	4,676.3	13.3	10.0	-178.06	-18.2	96.5	531.1	510.5	20.65	25.725		
4,800.0	4,775.7	4,776.0	4,775.7	13.6	10.2	-178.10	-18.2	96.5	542.2	521.1	21.09	25.709		
4,900.0	4,875.1	4,875.4	4,875.1	13.9	10.4	-178.14	-18.2	96.5	553.2	531.6	21.53	25.692		
5,000.0	4,974.5	4,974.8	4,974.5	14.2	10.6	-178.18	-18.2	96.5	564.2	542.2	21.97	25.675		
5,100.0	5,073.9	5,074.2	5,073.9	14.5	10.8	-178.21	-18.2	96.5	575.2	552.8	22.42	25.658		

CC - Min centre to center distance or convergent point, SF - min separation factor, ES - min ellipse separation



<b>Company:</b>	Synergy Resources	<b>Local Co-ordinate Reference:</b>	Well SRC Gies T-15-22CHZ
<b>Project:</b>	SEC.15-T7N-R65W	<b>TVD Reference:</b>	WELL @ 4851.0ft (RKB - 13')
<b>Reference Site:</b>	SRC Gies Pad Sec.15-T7N-R65W	<b>MD Reference:</b>	WELL @ 4851.0ft (RKB - 13')
<b>Site Error:</b>	0.0ft	<b>North Reference:</b>	True
<b>Reference Well:</b>	SRC Gies T-15-22CHZ	<b>Survey Calculation Method:</b>	Minimum Curvature
<b>Well Error:</b>	0.0ft	<b>Output errors are at</b>	2.00 sigma
<b>Reference Wellbore</b>	Wellbore #1	<b>Database:</b>	landmark
<b>Reference Design:</b>	Plan #1 (5-7-14)	<b>Offset TVD Reference:</b>	Offset Datum

Offset Design												Offset Site Error:	0.0 ft
Survey Program: 0-MWD												Offset Well Error:	0.0 ft
Reference		Offset		Semi Major Axis			Distance						
Measured Depth (ft)	Vertical Depth (ft)	Measured Depth (ft)	Vertical Depth (ft)	Reference (ft)	Offset (ft)	Highside Toolface (°)	Offset Wellbore Centre +N/-S (ft)	+E/-W (ft)	Between Centres (ft)	Between Ellipses (ft)	Minimum Separation (ft)	Separation Factor	Warning
5,200.0	5,173.3	5,173.6	5,173.3	14.8	11.0	-178.24	-18.2	96.5	586.2	563.3	22.86	25.640	
5,300.0	5,272.7	5,273.0	5,272.7	15.1	11.2	-178.28	-18.2	96.5	597.2	573.9	23.31	25.623	
5,400.0	5,372.1	5,372.3	5,372.1	15.4	11.4	-178.31	-18.2	96.5	608.2	584.5	23.75	25.606	
5,500.0	5,471.5	5,471.7	5,471.5	15.7	11.6	-178.34	-18.2	96.5	619.2	595.0	24.20	25.588	
5,600.0	5,570.9	5,571.1	5,570.9	16.0	11.9	-178.37	-18.2	96.5	630.2	605.6	24.65	25.571	
5,700.0	5,670.2	5,670.5	5,670.2	16.3	12.1	-178.40	-18.2	96.5	641.3	616.2	25.09	25.554	
5,800.0	5,769.8	5,770.0	5,769.8	16.6	12.3	-178.42	-18.2	96.5	651.0	625.4	25.55	25.483	
5,900.0	5,869.6	5,869.8	5,869.6	16.8	12.5	-178.44	-18.2	96.5	657.3	631.3	25.95	25.333	
6,000.0	5,969.5	5,969.8	5,969.5	16.9	12.7	-178.45	-18.2	96.5	660.1	633.8	26.31	25.084	
6,100.0	6,069.5	6,069.8	6,069.5	17.1	12.9	91.77	-18.2	96.5	660.2	633.5	26.71	24.722	
6,200.0	6,169.5	6,169.8	6,169.5	17.3	13.1	91.77	-18.2	96.5	660.2	633.1	27.11	24.351	
6,300.0	6,269.5	6,269.8	6,269.5	17.4	13.3	91.77	-18.2	96.5	660.2	632.7	27.52	23.989	
6,400.0	6,369.5	6,369.8	6,369.5	17.6	13.6	91.77	-18.2	96.5	660.2	632.3	27.93	23.637	
6,500.0	6,469.5	6,469.8	6,469.5	17.8	13.8	91.77	-18.2	96.5	660.2	631.9	28.34	23.295	
6,540.0	6,509.5	6,509.8	6,509.5	17.8	13.9	91.77	-18.2	96.5	660.2	631.7	28.51	23.160	
6,600.0	6,569.5	6,568.3	6,568.0	17.9	14.0	91.89	-19.6	96.5	660.3	631.6	28.75	22.969	
6,700.0	6,669.5	6,663.5	6,662.3	18.1	14.2	92.94	-31.7	96.6	660.9	631.8	29.14	22.678	
6,800.0	6,769.5	6,754.0	6,749.8	18.3	14.4	94.94	-54.8	96.7	662.8	633.3	29.55	22.428	
6,900.0	6,869.4	6,838.8	6,828.5	18.4	14.6	-82.16	-86.3	96.8	666.8	636.8	29.97	22.250	
7,000.0	6,967.8	6,920.9	6,900.6	18.6	14.8	-79.55	-125.4	96.9	672.1	641.7	30.41	22.102	
7,100.0	7,062.8	7,000.0	6,965.5	18.8	15.1	-77.16	-170.6	97.1	678.2	647.3	30.87	21.968	
7,200.0	7,152.5	7,078.7	7,024.6	19.0	15.4	-74.96	-222.4	97.3	684.7	653.3	31.39	21.817	
7,300.0	7,235.3	7,150.0	7,073.0	19.2	15.8	-73.12	-274.8	97.5	691.3	659.4	31.91	21.662	
7,400.0	7,309.5	7,230.4	7,121.1	19.5	16.3	-71.39	-339.2	97.7	697.4	664.9	32.57	21.413	
7,500.0	7,373.6	7,300.0	7,156.6	19.9	16.9	-70.08	-399.0	97.9	702.9	669.7	33.26	21.132	
7,600.0	7,426.5	7,378.3	7,189.4	20.4	17.6	-68.98	-470.1	98.2	707.4	673.2	34.17	20.703	
7,700.0	7,467.1	7,450.0	7,212.5	21.1	18.3	-68.24	-537.9	98.5	710.7	675.5	35.20	20.191	
7,800.0	7,494.5	7,524.1	7,229.1	21.9	19.1	-67.80	-610.1	98.7	712.7	676.2	36.48	19.539	
7,900.0	7,508.3	7,600.0	7,238.3	22.9	20.0	-67.67	-685.4	99.0	713.3	675.3	38.00	18.770	
8,000.0	7,510.0	7,676.9	7,240.0	24.0	21.0	-67.74	-762.3	99.3	712.9	673.0	39.90	17.866	
8,100.0	7,510.0	7,776.9	7,240.0	25.2	22.4	-67.74	-862.3	99.7	712.9	670.5	42.38	16.820	
8,200.0	7,510.0	7,876.9	7,240.0	26.5	23.8	-67.74	-962.3	100.0	712.9	667.9	45.01	15.838	
8,300.0	7,510.0	7,976.9	7,240.0	27.8	25.3	-67.74	-1,062.3	100.4	712.9	665.1	47.77	14.923	
8,400.0	7,510.0	8,076.9	7,240.0	29.3	26.9	-67.74	-1,162.3	100.8	712.9	662.2	50.63	14.079	
8,500.0	7,510.0	8,176.9	7,240.0	30.7	28.5	-67.74	-1,262.3	101.1	712.8	659.3	53.59	13.303	
8,600.0	7,510.0	8,276.9	7,240.0	32.3	30.1	-67.74	-1,362.3	101.5	712.8	656.2	56.61	12.591	
8,700.0	7,510.0	8,376.9	7,240.0	33.9	31.8	-67.74	-1,462.3	101.9	712.8	653.1	59.71	11.939	
8,800.0	7,510.0	8,476.9	7,240.0	35.5	33.5	-67.74	-1,562.3	102.2	712.8	650.0	62.86	11.340	
8,900.0	7,510.0	8,576.9	7,240.0	37.1	35.2	-67.74	-1,662.3	102.6	712.8	646.8	66.05	10.792	
9,000.0	7,510.0	8,676.9	7,240.0	38.8	37.0	-67.74	-1,762.3	103.0	712.8	643.5	69.29	10.288	
9,100.0	7,510.0	8,776.9	7,240.0	40.5	38.7	-67.74	-1,862.3	103.4	712.8	640.2	72.56	9.824	
9,200.0	7,510.0	8,876.9	7,240.0	42.2	40.5	-67.74	-1,962.3	103.7	712.8	636.9	75.86	9.396	
9,300.0	7,510.0	8,976.9	7,240.0	43.9	42.3	-67.74	-2,062.3	104.1	712.8	633.6	79.19	9.001	
9,400.0	7,510.0	9,076.9	7,240.0	45.6	44.1	-67.74	-2,162.3	104.5	712.8	630.2	82.54	8.635	
9,500.0	7,510.0	9,176.9	7,240.0	47.4	45.9	-67.74	-2,262.3	104.8	712.8	626.8	85.91	8.296	
9,600.0	7,510.0	9,276.9	7,240.0	49.2	47.7	-67.74	-2,362.3	105.2	712.8	623.4	89.30	7.981	
9,700.0	7,510.0	9,376.9	7,240.0	50.9	49.5	-67.74	-2,462.3	105.6	712.7	620.0	92.71	7.688	
9,800.0	7,510.0	9,476.9	7,240.0	52.7	51.4	-67.74	-2,562.3	105.9	712.7	616.6	96.13	7.414	
9,900.0	7,510.0	9,576.9	7,240.0	54.5	53.2	-67.74	-2,662.3	106.3	712.7	613.2	99.57	7.158	
10,000.0	7,510.0	9,676.9	7,240.0	56.3	55.1	-67.74	-2,762.3	106.7	712.7	609.7	103.01	6.919	
10,100.0	7,510.0	9,776.9	7,240.0	58.2	56.9	-67.74	-2,862.3	107.1	712.7	606.2	106.47	6.694	
10,200.0	7,510.0	9,876.9	7,240.0	60.0	58.8	-67.74	-2,962.2	107.4	712.7	602.8	109.94	6.483	

CC - Min centre to center distance or convergent point, SF - min separation factor, ES - min ellipse separation



<b>Company:</b>	Synergy Resources	<b>Local Co-ordinate Reference:</b>	Well SRC Gies T-15-22CHZ
<b>Project:</b>	SEC.15-T7N-R65W	<b>TVD Reference:</b>	WELL @ 4851.0ft (RKB - 13')
<b>Reference Site:</b>	SRC Gies Pad Sec.15-T7N-R65W	<b>MD Reference:</b>	WELL @ 4851.0ft (RKB - 13')
<b>Site Error:</b>	0.0ft	<b>North Reference:</b>	True
<b>Reference Well:</b>	SRC Gies T-15-22CHZ	<b>Survey Calculation Method:</b>	Minimum Curvature
<b>Well Error:</b>	0.0ft	<b>Output errors are at</b>	2.00 sigma
<b>Reference Wellbore</b>	Wellbore #1	<b>Database:</b>	landmark
<b>Reference Design:</b>	Plan #1 (5-7-14)	<b>Offset TVD Reference:</b>	Offset Datum

<b>Offset Design</b> SRC Gies Pad Sec.15-T7N-R65W - SRC Gies D-15-22NHZ - Wellbore #1 - Plan #1 (5-7-14)												<b>Offset Site Error:</b>	0.0 ft
Survey Program: 0-MWD												<b>Offset Well Error:</b>	0.0 ft
Reference		Offset		Semi Major Axis			Distance						
Measured Depth (ft)	Vertical Depth (ft)	Measured Depth (ft)	Vertical Depth (ft)	Reference (ft)	Offset (ft)	Highside Toolface (°)	Offset Wellbore Centre +N/-S (ft)	+E/-W (ft)	Between Centres (ft)	Between Ellipses (ft)	Minimum Separation (ft)	Separation Factor	Warning
10,300.0	7,510.0	9,976.9	7,240.0	61.8	60.6	-67.74	-3,062.2	107.8	712.7	599.3	113.41	6.284	
10,400.0	7,510.0	10,076.9	7,240.0	63.6	62.5	-67.74	-3,162.2	108.2	712.7	595.8	116.89	6.097	
10,500.0	7,510.0	10,176.9	7,240.0	65.5	64.4	-67.74	-3,262.2	108.5	712.7	592.3	120.38	5.920	
10,600.0	7,510.0	10,276.9	7,240.0	67.3	66.2	-67.74	-3,362.2	108.9	712.7	588.8	123.88	5.753	
10,700.0	7,510.0	10,376.9	7,240.0	69.2	68.1	-67.74	-3,462.2	109.3	712.7	585.3	127.39	5.594	
10,800.0	7,510.0	10,476.9	7,240.0	71.0	70.0	-67.74	-3,562.2	109.6	712.6	581.8	130.89	5.444	
10,900.0	7,510.0	10,576.9	7,240.0	72.9	71.9	-67.74	-3,662.2	110.0	712.6	578.2	134.41	5.302	
11,000.0	7,510.0	10,676.9	7,240.0	74.8	73.7	-67.74	-3,762.2	110.4	712.6	574.7	137.93	5.167	
11,100.0	7,510.0	10,776.9	7,240.0	76.6	75.6	-67.74	-3,862.2	110.8	712.6	571.2	141.45	5.038	
11,200.0	7,510.0	10,876.9	7,240.0	78.5	77.5	-67.74	-3,962.2	111.1	712.6	567.6	144.98	4.915	
11,300.0	7,510.0	10,976.9	7,240.0	80.4	79.4	-67.73	-4,062.2	111.5	712.6	564.1	148.51	4.798	
11,400.0	7,510.0	11,076.9	7,240.0	82.2	81.3	-67.73	-4,162.2	111.9	712.6	560.6	152.04	4.687	
11,500.0	7,510.0	11,176.9	7,240.0	84.1	83.2	-67.73	-4,262.2	112.2	712.6	557.0	155.58	4.580	
11,600.0	7,510.0	11,276.9	7,240.0	86.0	85.1	-67.73	-4,362.2	112.6	712.6	553.5	159.12	4.478	
11,700.0	7,510.0	11,376.9	7,240.0	87.9	87.0	-67.73	-4,462.2	113.0	712.6	549.9	162.67	4.381	
11,751.8	7,510.0	11,428.7	7,240.0	88.7	88.0	-67.73	-4,514.0	113.2	712.6	548.2	164.33	4.336 SF	

<b>Company:</b>	Synergy Resources	<b>Local Co-ordinate Reference:</b>	Well SRC Gies T-15-22CHZ
<b>Project:</b>	SEC.15-T7N-R65W	<b>TVD Reference:</b>	WELL @ 4851.0ft (RKB - 13')
<b>Reference Site:</b>	SRC Gies Pad Sec.15-T7N-R65W	<b>MD Reference:</b>	WELL @ 4851.0ft (RKB - 13')
<b>Site Error:</b>	0.0ft	<b>North Reference:</b>	True
<b>Reference Well:</b>	SRC Gies T-15-22CHZ	<b>Survey Calculation Method:</b>	Minimum Curvature
<b>Well Error:</b>	0.0ft	<b>Output errors are at</b>	2.00 sigma
<b>Reference Wellbore</b>	Wellbore #1	<b>Database:</b>	landmark
<b>Reference Design:</b>	Plan #1 (5-7-14)	<b>Offset TVD Reference:</b>	Offset Datum

Offset Design												Offset Site Error:	0.0 ft
Survey Program: 0-MWD												Offset Well Error:	0.0 ft
Reference	Offset	Semi Major Axis		Distance		Warning							
Measured Depth (ft)	Vertical Depth (ft)	Measured Depth (ft)	Vertical Depth (ft)	Reference (ft)	Offset (ft)	Highside Toolface (°)	Offset Wellbore Centre +N/-S (ft)	+E/-W (ft)	Between Centres (ft)	Between Ellipses (ft)	Minimum Separation (ft)	Separation Factor	
0.0	0.0	0.0	0.0	0.0	0.0	92.07	-0.7	20.0	20.0				
100.0	100.0	100.0	100.0	0.1	0.1	92.07	-0.7	20.0	20.0	19.8	0.22	89.057	
200.0	200.0	200.0	200.0	0.3	0.3	92.07	-0.7	20.0	20.0	19.3	0.67	29.686	
300.0	300.0	300.0	300.0	0.6	0.6	92.07	-0.7	20.0	20.0	18.9	1.12	17.811	
400.0	400.0	400.0	400.0	0.8	0.8	92.07	-0.7	20.0	20.0	18.4	1.57	12.722	
500.0	500.0	500.0	500.0	1.0	1.0	92.07	-0.7	20.0	20.0	18.0	2.02	9.895	
600.0	600.0	600.0	600.0	1.2	1.2	92.07	-0.7	20.0	20.0	17.5	2.47	8.096 CC, ES	
700.0	700.0	700.0	700.0	1.4	1.5	-178.30	-0.7	20.0	21.8	18.9	2.91	7.478	
800.0	799.8	799.8	799.8	1.7	1.7	-178.62	-0.7	20.0	27.0	23.7	3.34	8.083	
900.0	899.5	899.5	899.5	1.9	1.9	-178.96	-0.7	20.0	35.7	31.9	3.77	9.467	
1,000.0	998.8	998.8	998.8	2.1	2.1	-179.20	-0.7	20.0	46.7	42.5	4.21	11.094	
1,100.0	1,098.2	1,098.2	1,098.2	2.4	2.4	-179.35	-0.7	20.0	57.7	53.0	4.65	12.412	
1,200.0	1,197.6	1,197.6	1,197.6	2.7	2.6	-179.46	-0.7	20.0	68.7	63.6	5.09	13.492	
1,300.0	1,297.0	1,299.8	1,299.7	3.0	2.8	-179.50	-0.7	18.3	78.0	72.5	5.53	14.115	
1,400.0	1,396.4	1,402.5	1,402.3	3.2	3.0	-179.48	-0.8	12.9	83.8	77.8	5.96	14.068	
1,500.0	1,495.8	1,505.3	1,504.7	3.5	3.2	-179.41	-0.9	3.8	86.0	79.6	6.39	13.450	
1,600.0	1,595.2	1,605.3	1,604.1	3.8	3.5	-179.31	-1.0	-6.6	86.7	79.8	6.83	12.689	
1,700.0	1,694.6	1,705.3	1,703.6	4.1	3.7	-179.22	-1.1	-16.9	87.4	80.1	7.27	12.012	
1,800.0	1,794.0	1,805.2	1,803.1	4.4	4.0	-179.12	-1.2	-27.2	88.1	80.3	7.72	11.408	
1,900.0	1,893.4	1,905.2	1,902.5	4.7	4.2	-179.03	-1.4	-37.5	88.8	80.6	8.17	10.865	
2,000.0	1,992.8	2,005.2	2,002.0	5.0	4.5	-178.94	-1.5	-47.9	89.5	80.8	8.62	10.375	
2,100.0	2,092.2	2,105.2	2,101.5	5.3	4.7	-178.85	-1.6	-58.2	90.2	81.1	9.08	9.932	
2,200.0	2,191.5	2,205.2	2,200.9	5.6	5.0	-178.76	-1.7	-68.5	90.9	81.3	9.53	9.529	
2,300.0	2,290.9	2,305.2	2,300.4	5.9	5.3	-178.67	-1.8	-78.8	91.6	81.6	9.99	9.162	
2,400.0	2,390.3	2,405.2	2,399.8	6.2	5.6	-178.59	-1.9	-89.2	92.3	81.8	10.45	8.825	
2,500.0	2,489.7	2,505.2	2,499.3	6.5	5.8	-178.50	-2.0	-99.5	92.9	82.0	10.92	8.516	
2,600.0	2,589.1	2,605.2	2,598.8	6.8	6.1	-178.42	-2.2	-109.8	93.6	82.3	11.38	8.231	
2,700.0	2,688.5	2,705.2	2,698.2	7.1	6.4	-178.34	-2.3	-120.1	94.3	82.5	11.84	7.967	
2,800.0	2,787.9	2,805.2	2,797.7	7.4	6.7	-178.26	-2.4	-130.5	95.0	82.7	12.31	7.723	
2,900.0	2,887.3	2,905.2	2,897.2	7.8	7.0	-178.18	-2.5	-140.8	95.7	83.0	12.77	7.496	
3,000.0	2,986.7	3,005.2	2,996.6	8.1	7.3	-178.10	-2.6	-151.1	96.4	83.2	13.24	7.285	
3,100.0	3,086.1	3,105.2	3,096.1	8.4	7.5	-178.02	-2.7	-161.4	97.1	83.4	13.71	7.087	
3,200.0	3,185.5	3,205.2	3,195.6	8.7	7.8	-177.95	-2.8	-171.8	97.8	83.7	14.17	6.903	
3,300.0	3,284.9	3,305.2	3,295.0	9.0	8.1	-177.87	-2.9	-182.1	98.5	83.9	14.64	6.730	
3,400.0	3,384.2	3,405.2	3,394.5	9.3	8.4	-177.80	-3.1	-192.4	99.2	84.1	15.11	6.567	
3,500.0	3,483.6	3,505.2	3,493.9	9.6	8.7	-177.73	-3.2	-202.7	99.9	84.4	15.58	6.414	
3,600.0	3,583.0	3,605.2	3,593.4	9.9	9.0	-177.65	-3.3	-213.1	100.6	84.6	16.05	6.270	
3,700.0	3,682.4	3,705.2	3,692.9	10.2	9.3	-177.58	-3.4	-223.4	101.3	84.8	16.52	6.134	
3,800.0	3,781.8	3,805.2	3,792.3	10.5	9.6	-177.51	-3.5	-233.7	102.0	85.0	16.99	6.005	
3,900.0	3,881.2	3,905.2	3,891.8	10.8	9.9	-177.44	-3.6	-244.0	102.7	85.3	17.46	5.883	
4,000.0	3,980.6	4,005.2	3,991.3	11.1	10.2	-177.38	-3.7	-254.4	103.4	85.5	17.94	5.767	
4,100.0	4,080.0	4,105.2	4,090.7	11.4	10.4	-177.31	-3.9	-264.7	104.1	85.7	18.41	5.658	
4,200.0	4,179.4	4,205.2	4,190.2	11.7	10.7	-177.24	-4.0	-275.0	104.8	86.0	18.88	5.553	
4,300.0	4,278.8	4,305.2	4,289.6	12.0	11.0	-177.18	-4.1	-285.3	105.5	86.2	19.35	5.454	
4,400.0	4,378.2	4,405.2	4,389.1	12.3	11.3	-177.11	-4.2	-295.7	106.2	86.4	19.82	5.359	
4,500.0	4,477.5	4,505.2	4,488.6	12.7	11.6	-177.05	-4.3	-306.0	106.9	86.6	20.30	5.269	
4,600.0	4,576.9	4,605.2	4,588.0	13.0	11.9	-176.99	-4.4	-316.3	107.6	86.9	20.77	5.183	
4,700.0	4,676.3	4,705.2	4,687.5	13.3	12.2	-176.92	-4.5	-326.7	108.3	87.1	21.24	5.100	
4,800.0	4,775.7	4,802.1	4,784.0	13.6	12.5	-176.91	-4.6	-335.5	110.2	88.5	21.69	5.081	
4,900.0	4,875.1	4,900.0	4,881.7	13.9	12.6	-177.00	-4.7	-341.3	115.4	93.3	22.11	5.220	
5,000.0	4,974.5	4,993.9	4,975.6	14.2	12.8	-177.18	-4.7	-343.6	123.9	101.4	22.51	5.503	
5,100.0	5,073.9	5,092.2	5,073.9	14.5	13.0	-177.40	-4.7	-343.7	134.8	111.8	22.93	5.876	

CC - Min centre to center distance or convergent point, SF - min separation factor, ES - min ellipse separation

<b>Company:</b>	Synergy Resources	<b>Local Co-ordinate Reference:</b>	Well SRC Gies T-15-22CHZ
<b>Project:</b>	SEC.15-T7N-R65W	<b>TVD Reference:</b>	WELL @ 4851.0ft (RKB - 13')
<b>Reference Site:</b>	SRC Gies Pad Sec.15-T7N-R65W	<b>MD Reference:</b>	WELL @ 4851.0ft (RKB - 13')
<b>Site Error:</b>	0.0ft	<b>North Reference:</b>	True
<b>Reference Well:</b>	SRC Gies T-15-22CHZ	<b>Survey Calculation Method:</b>	Minimum Curvature
<b>Well Error:</b>	0.0ft	<b>Output errors are at</b>	2.00 sigma
<b>Reference Wellbore</b>	Wellbore #1	<b>Database:</b>	landmark
<b>Reference Design:</b>	Plan #1 (5-7-14)	<b>Offset TVD Reference:</b>	Offset Datum

Offset Design												Offset Site Error:	0.0ft
Survey Program: 0-MWD												Offset Well Error:	0.0ft
Reference		Offset		Semi Major Axis			Distance						
Measured Depth (ft)	Vertical Depth (ft)	Measured Depth (ft)	Vertical Depth (ft)	Reference (ft)	Offset (ft)	Highside Toolface (°)	Offset Wellbore Centre +N/-S (ft)	+E/-W (ft)	Between Centres (ft)	Between Ellipses (ft)	Minimum Separation (ft)	Separation Factor	Warning
5,200.0	5,173.3	5,191.6	5,173.3	14.8	13.1	-177.60	-4.7	-343.7	145.8	122.4	23.37	6.238	
5,300.0	5,272.7	5,291.0	5,272.7	15.1	13.3	-177.77	-4.7	-343.7	156.8	133.0	23.81	6.586	
5,400.0	5,372.1	5,390.4	5,372.1	15.4	13.5	-177.92	-4.7	-343.7	167.8	143.5	24.24	6.921	
5,500.0	5,471.5	5,489.8	5,471.5	15.7	13.7	-178.04	-4.7	-343.7	178.8	154.1	24.68	7.244	
5,600.0	5,570.9	5,589.2	5,570.9	16.0	13.9	-178.16	-4.7	-343.7	189.8	164.7	25.12	7.555	
5,700.0	5,670.2	5,688.5	5,670.2	16.3	14.1	-178.26	-4.7	-343.7	200.8	175.3	25.56	7.856	
5,800.0	5,769.8	5,788.1	5,769.8	16.6	14.3	-178.34	-4.7	-343.7	210.6	184.6	25.99	8.102	
5,900.0	5,869.6	5,887.9	5,869.6	16.8	14.4	-178.40	-4.7	-343.7	216.8	190.5	26.36	8.227	
6,000.0	5,969.5	5,987.8	5,969.5	16.9	14.6	-178.42	-4.7	-343.7	219.7	193.0	26.70	8.228	
6,100.0	6,069.5	6,087.8	6,069.5	17.1	14.8	91.81	-4.7	-343.7	219.8	192.7	27.08	8.118	
6,200.0	6,169.5	6,187.8	6,169.5	17.3	15.0	91.81	-4.7	-343.7	219.8	192.3	27.48	7.999	
6,300.0	6,269.5	6,287.8	6,269.5	17.4	15.2	91.81	-4.7	-343.7	219.8	191.9	27.88	7.883	
6,400.0	6,369.5	6,387.8	6,369.5	17.6	15.4	91.81	-4.7	-343.7	219.8	191.5	28.29	7.770	
6,500.0	6,469.5	6,487.8	6,469.5	17.8	15.6	91.81	-4.7	-343.7	219.8	191.1	28.70	7.660	
6,542.3	6,511.9	6,530.2	6,511.9	17.8	15.7	91.81	-4.7	-343.7	219.8	190.9	28.87	7.614	
6,600.0	6,569.5	6,587.3	6,569.5	17.9	15.8	92.18	-6.1	-343.7	219.9	190.8	29.10	7.556	
6,700.0	6,669.5	6,684.4	6,665.1	18.1	15.9	95.46	-18.8	-343.6	220.8	191.3	29.55	7.473	
6,800.0	6,769.5	6,776.4	6,754.0	18.3	16.1	101.55	-42.7	-343.5	224.9	194.8	30.16	7.459	
6,900.0	6,869.4	6,862.6	6,833.7	18.4	16.3	-70.54	-75.2	-343.4	234.6	203.7	30.91	7.590	
7,000.0	6,967.8	6,945.7	6,906.4	18.6	16.5	-63.60	-115.5	-343.3	247.9	216.3	31.63	7.836	
7,100.0	7,062.8	7,026.5	6,972.1	18.8	16.7	-57.72	-162.4	-343.1	263.2	231.0	32.13	8.191	
7,200.0	7,152.5	7,105.2	7,030.7	19.0	17.0	-52.87	-214.9	-342.9	279.1	246.9	32.27	8.650	
7,300.0	7,235.3	7,182.3	7,082.1	19.2	17.3	-48.94	-272.3	-342.7	294.8	262.7	32.04	9.201	
7,400.0	7,309.5	7,258.1	7,126.4	19.5	17.7	-45.82	-333.8	-342.4	309.3	277.8	31.47	9.828	
7,500.0	7,373.6	7,332.9	7,163.4	19.9	18.2	-43.40	-398.7	-342.2	322.0	291.3	30.67	10.498	
7,600.0	7,426.5	7,406.8	7,193.2	20.4	18.8	-41.58	-466.3	-341.9	332.5	302.7	29.79	11.164	
7,700.0	7,467.1	7,480.1	7,215.7	21.1	19.4	-40.29	-536.0	-341.6	340.5	311.6	28.97	11.754	
7,800.0	7,494.5	7,550.0	7,230.4	21.9	20.2	-39.51	-604.3	-341.4	345.8	317.4	28.37	12.189	
7,900.0	7,508.3	7,625.7	7,238.8	22.9	21.0	-39.15	-679.5	-341.1	348.1	319.9	28.18	12.350	
8,000.0	7,510.0	7,710.0	7,240.0	24.0	22.0	-39.14	-763.9	-340.7	348.1	319.1	29.06	11.978	
8,100.0	7,510.0	7,810.0	7,240.0	25.2	23.3	-39.14	-863.9	-340.4	348.1	317.3	30.79	11.306	
8,200.0	7,510.0	7,910.0	7,240.0	26.5	24.7	-39.14	-963.9	-340.0	348.1	315.5	32.65	10.663	
8,300.0	7,510.0	8,010.0	7,240.0	27.8	26.2	-39.14	-1,063.9	-339.6	348.1	313.5	34.62	10.057	
8,400.0	7,510.0	8,110.0	7,240.0	29.3	27.7	-39.15	-1,163.8	-339.2	348.1	311.5	36.67	9.493	
8,500.0	7,510.0	8,210.0	7,240.0	30.7	29.2	-39.15	-1,263.8	-338.8	348.2	309.3	38.81	8.971	
8,600.0	7,510.0	8,310.0	7,240.0	32.3	30.8	-39.15	-1,363.8	-338.4	348.2	307.1	41.01	8.490	
8,700.0	7,510.0	8,410.0	7,240.0	33.9	32.5	-39.15	-1,463.8	-338.0	348.2	304.9	43.26	8.047	
8,800.0	7,510.0	8,510.0	7,240.0	35.5	34.2	-39.15	-1,563.8	-337.6	348.2	302.6	45.57	7.641	
8,900.0	7,510.0	8,610.0	7,240.0	37.1	35.8	-39.15	-1,663.8	-337.2	348.2	300.3	47.91	7.267	
9,000.0	7,510.0	8,710.0	7,240.0	38.8	37.6	-39.15	-1,763.8	-336.9	348.2	297.9	50.29	6.924	
9,100.0	7,510.0	8,810.0	7,240.0	40.5	39.3	-39.15	-1,863.8	-336.5	348.2	295.5	52.69	6.608	
9,200.0	7,510.0	8,910.0	7,240.0	42.2	41.0	-39.16	-1,963.8	-336.1	348.2	293.1	55.12	6.316	
9,300.0	7,510.0	9,010.0	7,240.0	43.9	42.8	-39.16	-2,063.8	-335.7	348.2	290.6	57.58	6.047	
9,400.0	7,510.0	9,110.0	7,240.0	45.6	44.6	-39.16	-2,163.8	-335.3	348.2	288.1	60.05	5.798	
9,500.0	7,510.0	9,210.0	7,240.0	47.4	46.4	-39.16	-2,263.8	-334.9	348.2	285.7	62.55	5.567	
9,600.0	7,510.0	9,310.0	7,240.0	49.2	48.2	-39.16	-2,363.8	-334.5	348.2	283.2	65.06	5.353	
9,700.0	7,510.0	9,410.0	7,240.0	50.9	50.0	-39.16	-2,463.8	-334.1	348.2	280.6	67.58	5.153	
9,800.0	7,510.0	9,510.0	7,240.0	52.7	51.8	-39.16	-2,563.8	-333.7	348.2	278.1	70.11	4.967	
9,900.0	7,510.0	9,610.0	7,240.0	54.5	53.6	-39.16	-2,663.8	-333.4	348.2	275.6	72.66	4.793	
10,000.0	7,510.0	9,710.0	7,240.0	56.3	55.5	-39.16	-2,763.8	-333.0	348.2	273.0	75.21	4.630	
10,100.0	7,510.0	9,810.0	7,240.0	58.2	57.3	-39.17	-2,863.8	-332.6	348.2	270.5	77.78	4.477	
10,200.0	7,510.0	9,910.0	7,240.0	60.0	59.2	-39.17	-2,963.8	-332.2	348.2	267.9	80.35	4.334	

CC - Min centre to center distance or convergent point, SF - min separation factor, ES - min ellipse separation

<b>Company:</b>	Synergy Resources	<b>Local Co-ordinate Reference:</b>	Well SRC Gies T-15-22CHZ
<b>Project:</b>	SEC.15-T7N-R65W	<b>TVD Reference:</b>	WELL @ 4851.0ft (RKB - 13')
<b>Reference Site:</b>	SRC Gies Pad Sec.15-T7N-R65W	<b>MD Reference:</b>	WELL @ 4851.0ft (RKB - 13')
<b>Site Error:</b>	0.0ft	<b>North Reference:</b>	True
<b>Reference Well:</b>	SRC Gies T-15-22CHZ	<b>Survey Calculation Method:</b>	Minimum Curvature
<b>Well Error:</b>	0.0ft	<b>Output errors are at</b>	2.00 sigma
<b>Reference Wellbore</b>	Wellbore #1	<b>Database:</b>	landmark
<b>Reference Design:</b>	Plan #1 (5-7-14)	<b>Offset TVD Reference:</b>	Offset Datum

<b>Offset Design</b> SRC Gies Pad Sec.15-T7N-R65W - SRC Gies T-15-22NHZ - Wellbore #1 - Plan #1 (5-7-14)												<b>Offset Site Error:</b>	0.0 ft
Survey Program: 0-MWD												<b>Offset Well Error:</b>	0.0 ft
Reference		Offset		Semi Major Axis			Distance						
Measured Depth (ft)	Vertical Depth (ft)	Measured Depth (ft)	Vertical Depth (ft)	Reference (ft)	Offset (ft)	Highside Toolface (°)	Offset Wellbore Centre +N/-S (ft)	+E/-W (ft)	Between Centres (ft)	Between Ellipses (ft)	Minimum Separation (ft)	Separation Factor	Warning
10,300.0	7,510.0	10,010.0	7,240.0	61.8	61.0	-39.17	-3,063.8	-331.8	348.3	265.3	82.93	4.199	
10,400.0	7,510.0	10,110.0	7,240.0	63.6	62.9	-39.17	-3,163.8	-331.4	348.3	262.7	85.52	4.072	
10,500.0	7,510.0	10,210.0	7,240.0	65.5	64.7	-39.17	-3,263.8	-331.0	348.3	260.2	88.11	3.953	
10,600.0	7,510.0	10,310.0	7,240.0	67.3	66.6	-39.17	-3,363.8	-330.6	348.3	257.6	90.71	3.839	
10,700.0	7,510.0	10,410.0	7,240.0	69.2	68.4	-39.17	-3,463.8	-330.3	348.3	255.0	93.31	3.732	
10,800.0	7,510.0	10,510.0	7,240.0	71.0	70.3	-39.17	-3,563.8	-329.9	348.3	252.4	95.92	3.631	
10,900.0	7,510.0	10,610.0	7,240.0	72.9	72.2	-39.18	-3,663.8	-329.5	348.3	249.8	98.53	3.535	
11,000.0	7,510.0	10,710.0	7,240.0	74.8	74.1	-39.18	-3,763.8	-329.1	348.3	247.1	101.15	3.443	
11,100.0	7,510.0	10,810.0	7,240.0	76.6	75.9	-39.18	-3,863.8	-328.7	348.3	244.5	103.77	3.356	
11,200.0	7,510.0	10,910.0	7,240.0	78.5	77.8	-39.18	-3,963.8	-328.3	348.3	241.9	106.39	3.274	
11,300.0	7,510.0	11,010.0	7,240.0	80.4	79.7	-39.18	-4,063.8	-327.9	348.3	239.3	109.02	3.195	
11,400.0	7,510.0	11,110.0	7,240.0	82.2	81.6	-39.18	-4,163.8	-327.5	348.3	236.7	111.65	3.120	
11,500.0	7,510.0	11,210.0	7,240.0	84.1	83.5	-39.18	-4,263.8	-327.1	348.3	234.0	114.29	3.048	
11,600.0	7,510.0	11,310.0	7,240.0	86.0	85.4	-39.18	-4,363.8	-326.8	348.3	231.4	116.92	2.979	
11,700.0	7,510.0	11,410.0	7,240.0	87.9	87.2	-39.18	-4,463.8	-326.4	348.3	228.8	119.56	2.914	
11,751.8	7,510.0	11,461.9	7,240.0	88.7	88.2	-39.19	-4,515.6	-326.2	348.3	227.6	120.76	2.884 SF	

<b>Company:</b>	Synergy Resources	<b>Local Co-ordinate Reference:</b>	Well SRC Gies T-15-22CHZ
<b>Project:</b>	SEC.15-T7N-R65W	<b>TVD Reference:</b>	WELL @ 4851.0ft (RKB - 13')
<b>Reference Site:</b>	SRC Gies Pad Sec.15-T7N-R65W	<b>MD Reference:</b>	WELL @ 4851.0ft (RKB - 13')
<b>Site Error:</b>	0.0ft	<b>North Reference:</b>	True
<b>Reference Well:</b>	SRC Gies T-15-22CHZ	<b>Survey Calculation Method:</b>	Minimum Curvature
<b>Well Error:</b>	0.0ft	<b>Output errors are at</b>	2.00 sigma
<b>Reference Wellbore</b>	Wellbore #1	<b>Database:</b>	landmark
<b>Reference Design:</b>	Plan #1 (5-7-14)	<b>Offset TVD Reference:</b>	Offset Datum

Reference Depths are relative to WELL @ 4851.0ft (RKB - 13')

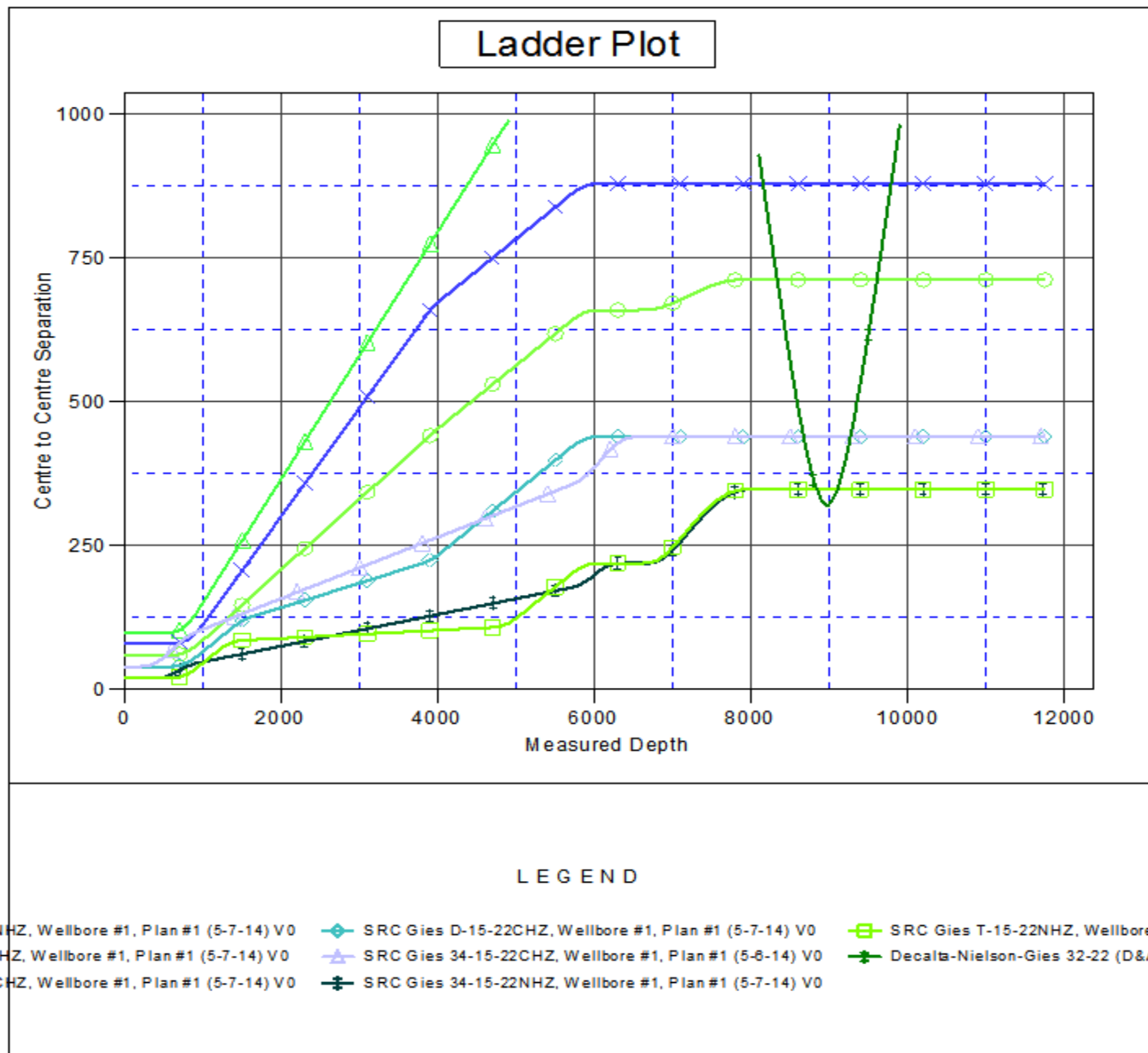
Offset Depths are relative to Offset Datum

Central Meridian is -105.500000 °

Coordinates are relative to: SRC Gies T-15-22CHZ

Coordinate System is US State Plane 1983, Colorado Northern Zone

Grid Convergence at Surface is: 0.55°



<b>Company:</b>	Synergy Resources	<b>Local Co-ordinate Reference:</b>	Well SRC Gies T-15-22CHZ
<b>Project:</b>	SEC.15-T7N-R65W	<b>TVD Reference:</b>	WELL @ 4851.0ft (RKB - 13')
<b>Reference Site:</b>	SRC Gies Pad Sec.15-T7N-R65W	<b>MD Reference:</b>	WELL @ 4851.0ft (RKB - 13')
<b>Site Error:</b>	0.0ft	<b>North Reference:</b>	True
<b>Reference Well:</b>	SRC Gies T-15-22CHZ	<b>Survey Calculation Method:</b>	Minimum Curvature
<b>Well Error:</b>	0.0ft	<b>Output errors are at</b>	2.00 sigma
<b>Reference Wellbore</b>	Wellbore #1	<b>Database:</b>	landmark
<b>Reference Design:</b>	Plan #1 (5-7-14)	<b>Offset TVD Reference:</b>	Offset Datum

Reference Depths are relative to WELL @ 4851.0ft (RKB - 13')

Offset Depths are relative to Offset Datum

Central Meridian is -105.500000 °

Coordinates are relative to: SRC Gies T-15-22CHZ

Coordinate System is US State Plane 1983, Colorado Northern Zone

Grid Convergence at Surface is: 0.55°

