

Synergy Resources

Well Name: **SRC Gies 34-15-22CHZ**

Surface Location: SRC Gies Pad Sec.15-T7N-R65W

North American Datum 1983 , US State Plane 1983 , Colorado Northern Zone

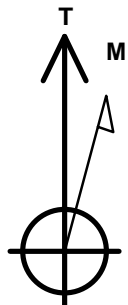
Ground Elevation: 4839.0

+N/-S	+E/-W	Northing	Easting	Latitude	Longitude	Slot
0.0	0.0	1450674.22	3237858.77	40.567348	-104.643834	

RKB - 13' WELL @ 4852.0ft (RKB - 13')

WELLBORE TARGET DETAILS

Name	TVD	+N/-S	+E/-W	Shape
SHL 272'FSL & 1147'FEL, Sec.15	1.0	0.0	0.0	Point
BHL 470'FSL & 2084'FEL, Sec.22	7510.0	-4515.7	-946.2	Point
Landing Pt. 460'FNL & 2101'FEL, Sec.22	7510.0	-702.4	-960.5	Point



Azimuths to True North
Magnetic North: 8.42°

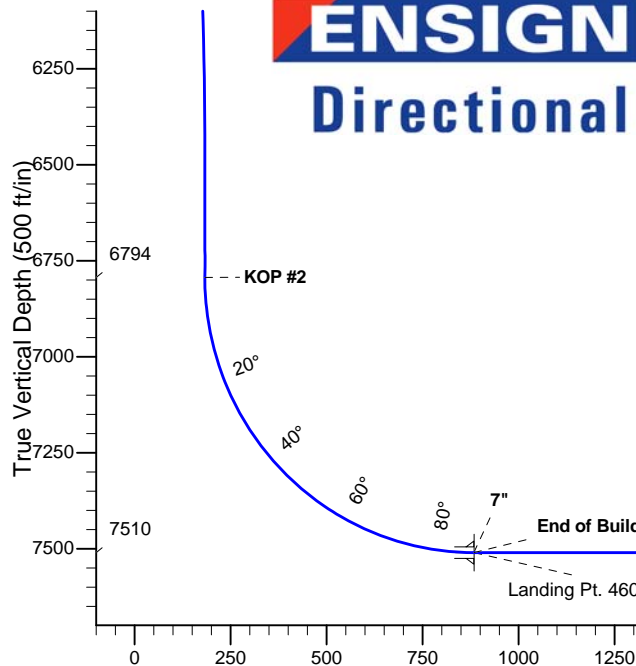
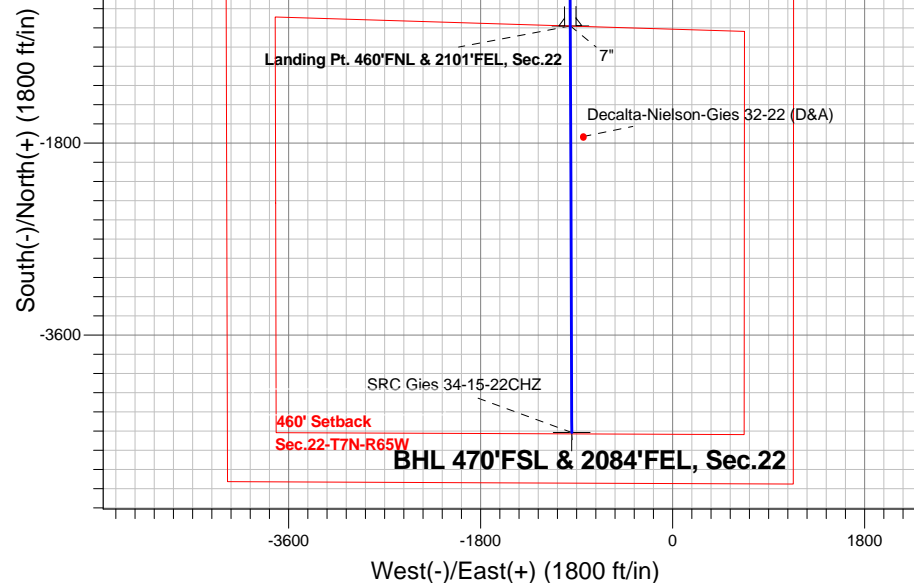
Magnetic Field
Strength: 52926.0snT
Dip Angle: 67.10°
Date: 5/8/2014
Model: IGRF2010

SRC Gies Pad Sec.15-T7N-R65W
SRC Gies 34-15-22CHZ
Plan #1 (5-6-14)
12:43, May 14 2014

ANNOTATIONS

TVD	MD	Annotation
200.0	200.0	KOP #1
6793.8	6870.8	KOP #2
7510.0	7995.8	End of Build

South(-)/North(+) (1800 ft/in)



SECTION DETAILS

Sec	MD	Inc	Azi	TVD	+N/-S	+E/-W	DLeg	TFace	VSec	Target
1	0.0	0.00	0.00	0.0	0.0	0.0	0.00	0.00	0.0	
2	200.0	0.00	0.00	200.0	0.0	0.0	0.00	0.00	0.0	
3	669.1	9.38	270.87	667.0	0.6	-38.3	2.00	270.87	7.3	
4	6107.8	9.38	270.87	6033.0	14.0	-924.9	0.00	0.00	175.9	
5	6576.9	0.00	0.00	6500.0	14.6	-963.2	2.00	180.00	183.2	
6	6870.8	0.00	0.00	6793.8	14.6	-963.2	0.00	0.00	183.2	
7	7995.8	90.00	179.78	7510.0	-701.6	-960.5	8.00	179.78	883.6	
8	7996.5	90.00	179.78	7510.0	-702.4	-960.5	0.00	0.00	884.4	Landing Pt. 460'FNL & 2101'FEL, Sec.22
9	11809.9	90.00	179.78	7510.0	-4515.8	-946.1	0.00	0.00	4613.8	BHL 470'FSL & 2084'FEL, Sec.22

BHL 470'FSL & 2084'FEL, Sec.22

Vertical Section at 191.83° (500 ft/in)



Synergy Resources

SEC.15-T7N-R65W

SRC Gies Pad Sec.15-T7N-R65W

SRC Gies 34-15-22CHZ

Wellbore #1

Plan: Plan #1 (5-6-14)

Standard Planning Report

14 May, 2014

Database:	landmark	Local Co-ordinate Reference:	Well SRC Gies 34-15-22CHZ
Company:	Synergy Resources	TVD Reference:	WELL @ 4852.0ft (RKB - 13')
Project:	SEC.15-T7N-R65W	MD Reference:	WELL @ 4852.0ft (RKB - 13')
Site:	SRC Gies Pad Sec.15-T7N-R65W	North Reference:	True
Well:	SRC Gies 34-15-22CHZ	Survey Calculation Method:	Minimum Curvature
Wellbore:	Wellbore #1		
Design:	Plan #1 (5-6-14)		

Project	SEC.15-T7N-R65W, Weld County, CO		
Map System:	US State Plane 1983	System Datum:	Mean Sea Level
Geo Datum:	North American Datum 1983		Using Well Reference Point
Map Zone:	Colorado Northern Zone		Using geodetic scale factor

Site						SRC Gies Pad Sec.15-T7N-R65W							
Site Position: From: Position Uncertainty:			Lat/Long 0.0 ft			Northing:		1,450,674.24 ft		Latitude:		40.567348	
						Easting:		3,237,858.77 ft		Longitude:		-104.643834	
						Slot Radius:		"		Grid Convergence:		0.55 °	

Well	SRC Gies 34-15-22CHZ					
Well Position	+N-S	0.0 ft	Northing:	1,450,674.22 ft	Latitude:	40.567348
	+E-W	0.0 ft	Easting:	3,237,858.77 ft	Longitude:	-104.643834
Position Uncertainty		0.0 ft	Wellhead Elevation:	ft	Ground Level:	4,839.0 ft

Wellbore	Wellbore #1				
Magnetics	Model Name	Sample Date	Declination (°)	Dip Angle (°)	Field Strength (nT)
	IGRF2010	5/8/2014	8.42	67.10	52,926

Design	Plan #1 (5-6-14)			
Audit Notes:				
Version:	Phase:	PROTOTYPE	Tie On Depth:	0.0
Vertical Section:	Depth From (TVD) (ft)	+N/-S (ft)	+E/-W (ft)	Direction (°)
	0.0	0.0	0.0	191.83

Plan Sections										
Measured Depth (ft)	Inclination (°)	Azimuth (°)	Vertical Depth (ft)	+N/-S (ft)	+E/-W (ft)	Dogleg Rate (°/100ft)	Build Rate (°/100ft)	Turn Rate (°/100ft)	TFO (°)	Target
0.0	0.00	0.00	0.0	0.0	0.0	0.00	0.00	0.00	0.00	
200.0	0.00	0.00	200.0	0.0	0.0	0.00	0.00	0.00	0.00	
669.1	9.38	270.87	667.0	0.6	-38.3	2.00	2.00	0.00	270.87	
6,107.8	9.38	270.87	6,033.0	14.0	-924.9	0.00	0.00	0.00	0.00	
6,576.9	0.00	0.00	6,500.0	14.6	-963.2	2.00	-2.00	0.00	180.00	
6,870.8	0.00	0.00	6,793.8	14.6	-963.2	0.00	0.00	0.00	0.00	
7,995.8	90.00	179.78	7,510.0	-701.6	-960.5	8.00	8.00	0.00	179.78	
7,996.5	90.00	179.78	7,510.0	-702.4	-960.5	0.00	0.00	0.00	0.00	Landing Pt. 460'FN
11,809.9	90.00	179.78	7,510.0	-4,515.8	-946.1	0.00	0.00	0.00	0.00	BHL 470'FSL & 206

Database:	landmark	Local Co-ordinate Reference:	Well SRC Gies 34-15-22CHZ
Company:	Synergy Resources	TVD Reference:	WELL @ 4852.0ft (RKB - 13')
Project:	SEC.15-T7N-R65W	MD Reference:	WELL @ 4852.0ft (RKB - 13')
Site:	SRC Gies Pad Sec.15-T7N-R65W	North Reference:	True
Well:	SRC Gies 34-15-22CHZ	Survey Calculation Method:	Minimum Curvature
Wellbore:	Wellbore #1		
Design:	Plan #1 (5-6-14)		

Planned Survey									
Measured Depth (ft)	Inclination (°)	Azimuth (°)	Vertical Depth (ft)	+N/-S (ft)	+E/-W (ft)	Vertical Section (ft)	Dogleg Rate (°/100ft)	Build Rate (°/100ft)	Turn Rate (°/100ft)
0.0	0.00	0.00	0.0	0.0	0.0	0.0	0.00	0.00	0.00
1.0	0.00	0.00	1.0	0.0	0.0	0.0	0.00	0.00	0.00
SHL 272'FSL & 1147'FEL, Sec.15									
100.0	0.00	0.00	100.0	0.0	0.0	0.0	0.00	0.00	0.00
200.0	0.00	0.00	200.0	0.0	0.0	0.0	0.00	0.00	0.00
KOP #1									
300.0	2.00	270.87	300.0	0.0	-1.7	0.3	2.00	2.00	0.00
400.0	4.00	270.87	399.8	0.1	-7.0	1.3	2.00	2.00	0.00
500.0	6.00	270.87	499.5	0.2	-15.7	3.0	2.00	2.00	0.00
600.0	8.00	270.87	598.7	0.4	-27.9	5.3	2.00	2.00	0.00
669.1	9.38	270.87	667.0	0.6	-38.3	7.3	2.00	2.00	0.00
700.0	9.38	270.87	697.5	0.7	-43.4	8.2	0.00	0.00	0.00
800.0	9.38	270.87	796.2	0.9	-59.7	11.3	0.00	0.00	0.00
900.0	9.38	270.87	894.8	1.2	-76.0	14.4	0.00	0.00	0.00
1,000.0	9.38	270.87	993.5	1.4	-92.3	17.5	0.00	0.00	0.00
1,100.0	9.38	270.87	1,092.1	1.6	-108.6	20.6	0.00	0.00	0.00
1,200.0	9.38	270.87	1,190.8	1.9	-124.9	23.8	0.00	0.00	0.00
1,300.0	9.38	270.87	1,289.5	2.1	-141.2	26.9	0.00	0.00	0.00
1,400.0	9.38	270.87	1,388.1	2.4	-157.5	30.0	0.00	0.00	0.00
1,500.0	9.38	270.87	1,486.8	2.6	-173.8	33.1	0.00	0.00	0.00
1,600.0	9.38	270.87	1,585.5	2.9	-190.1	36.2	0.00	0.00	0.00
1,700.0	9.38	270.87	1,684.1	3.1	-206.4	39.3	0.00	0.00	0.00
1,800.0	9.38	270.87	1,782.8	3.4	-222.7	42.4	0.00	0.00	0.00
1,900.0	9.38	270.87	1,881.4	3.6	-239.0	45.5	0.00	0.00	0.00
2,000.0	9.38	270.87	1,980.1	3.9	-255.3	48.6	0.00	0.00	0.00
2,100.0	9.38	270.87	2,078.8	4.1	-271.6	51.7	0.00	0.00	0.00
2,200.0	9.38	270.87	2,177.4	4.4	-287.9	54.8	0.00	0.00	0.00
2,300.0	9.38	270.87	2,276.1	4.6	-304.2	57.9	0.00	0.00	0.00
2,400.0	9.38	270.87	2,374.7	4.9	-320.5	61.0	0.00	0.00	0.00
2,500.0	9.38	270.87	2,473.4	5.1	-336.8	64.1	0.00	0.00	0.00
2,600.0	9.38	270.87	2,572.1	5.4	-353.1	67.2	0.00	0.00	0.00
2,700.0	9.38	270.87	2,670.7	5.6	-369.4	70.3	0.00	0.00	0.00
2,800.0	9.38	270.87	2,769.4	5.8	-385.7	73.4	0.00	0.00	0.00
2,900.0	9.38	270.87	2,868.1	6.1	-402.0	76.5	0.00	0.00	0.00
3,000.0	9.38	270.87	2,966.7	6.3	-418.3	79.6	0.00	0.00	0.00
3,100.0	9.38	270.87	3,065.4	6.6	-434.6	82.7	0.00	0.00	0.00
3,200.0	9.38	270.87	3,164.0	6.8	-450.9	85.8	0.00	0.00	0.00
3,300.0	9.38	270.87	3,262.7	7.1	-467.2	88.9	0.00	0.00	0.00
3,400.0	9.38	270.87	3,361.4	7.3	-483.5	92.0	0.00	0.00	0.00
3,500.0	9.38	270.87	3,460.0	7.6	-499.8	95.1	0.00	0.00	0.00
3,600.0	9.38	270.87	3,558.7	7.8	-516.1	98.2	0.00	0.00	0.00
3,700.0	9.38	270.87	3,657.4	8.1	-532.4	101.3	0.00	0.00	0.00
3,800.0	9.38	270.87	3,756.0	8.3	-548.7	104.4	0.00	0.00	0.00
3,900.0	9.38	270.87	3,854.7	8.6	-565.0	107.5	0.00	0.00	0.00
4,000.0	9.38	270.87	3,953.3	8.8	-581.3	110.6	0.00	0.00	0.00
4,100.0	9.38	270.87	4,052.0	9.1	-597.6	113.7	0.00	0.00	0.00
4,200.0	9.38	270.87	4,150.7	9.3	-613.9	116.8	0.00	0.00	0.00
4,300.0	9.38	270.87	4,249.3	9.6	-630.2	119.9	0.00	0.00	0.00
4,400.0	9.38	270.87	4,348.0	9.8	-646.5	123.0	0.00	0.00	0.00
4,500.0	9.38	270.87	4,446.7	10.0	-662.8	126.1	0.00	0.00	0.00
4,600.0	9.38	270.87	4,545.3	10.3	-679.1	129.2	0.00	0.00	0.00
4,700.0	9.38	270.87	4,644.0	10.5	-695.4	132.3	0.00	0.00	0.00
4,800.0	9.38	270.87	4,742.6	10.8	-711.7	135.4	0.00	0.00	0.00
4,900.0	9.38	270.87	4,841.3	11.0	-728.0	138.5	0.00	0.00	0.00

Database:	landmark	Local Co-ordinate Reference:	Well SRC Gies 34-15-22CHZ
Company:	Synergy Resources	TVD Reference:	WELL @ 4852.0ft (RKB - 13')
Project:	SEC.15-T7N-R65W	MD Reference:	WELL @ 4852.0ft (RKB - 13')
Site:	SRC Gies Pad Sec.15-T7N-R65W	North Reference:	True
Well:	SRC Gies 34-15-22CHZ	Survey Calculation Method:	Minimum Curvature
Wellbore:	Wellbore #1		
Design:	Plan #1 (5-6-14)		

Planned Survey									
Measured Depth (ft)	Inclination (°)	Azimuth (°)	Vertical Depth (ft)	+N/-S (ft)	+E/-W (ft)	Vertical Section (ft)	Dogleg Rate (°/100ft)	Build Rate (°/100ft)	Turn Rate (°/100ft)
5,000.0	9.38	270.87	4,940.0	11.3	-744.3	141.6	0.00	0.00	0.00
5,100.0	9.38	270.87	5,038.6	11.5	-760.6	144.7	0.00	0.00	0.00
5,200.0	9.38	270.87	5,137.3	11.8	-776.9	147.8	0.00	0.00	0.00
5,300.0	9.38	270.87	5,236.0	12.0	-793.2	150.9	0.00	0.00	0.00
5,400.0	9.38	270.87	5,334.6	12.3	-809.5	154.0	0.00	0.00	0.00
5,500.0	9.38	270.87	5,433.3	12.5	-825.8	157.1	0.00	0.00	0.00
5,600.0	9.38	270.87	5,531.9	12.8	-842.1	160.2	0.00	0.00	0.00
5,700.0	9.38	270.87	5,630.6	13.0	-858.4	163.3	0.00	0.00	0.00
5,800.0	9.38	270.87	5,729.3	13.3	-874.7	166.4	0.00	0.00	0.00
5,900.0	9.38	270.87	5,827.9	13.5	-891.0	169.5	0.00	0.00	0.00
6,000.0	9.38	270.87	5,926.6	13.8	-907.3	172.6	0.00	0.00	0.00
6,100.0	9.38	270.87	6,025.2	14.0	-923.6	175.7	0.00	0.00	0.00
6,107.8	9.38	270.87	6,033.0	14.0	-924.9	175.9	0.00	0.00	0.00
6,200.0	7.54	270.87	6,124.1	14.2	-938.4	178.5	2.00	-2.00	0.00
6,300.0	5.54	270.87	6,223.5	14.4	-949.8	180.7	2.00	-2.00	0.00
6,400.0	3.54	270.87	6,323.2	14.5	-957.7	182.2	2.00	-2.00	0.00
6,500.0	1.54	270.87	6,423.1	14.6	-962.2	183.0	2.00	-2.00	0.00
6,576.9	0.00	0.00	6,500.0	14.6	-963.2	183.2	2.00	-2.00	0.00
6,600.0	0.00	0.00	6,523.1	14.6	-963.2	183.2	0.00	0.00	0.00
6,700.0	0.00	0.00	6,623.1	14.6	-963.2	183.2	0.00	0.00	0.00
6,800.0	0.00	0.00	6,723.1	14.6	-963.2	183.2	0.00	0.00	0.00
6,870.8	0.00	0.00	6,793.9	14.6	-963.2	183.2	0.00	0.00	0.00
KOP #2									
6,900.0	2.34	179.78	6,823.0	14.0	-963.2	183.8	8.01	8.01	0.00
7,000.0	10.34	179.78	6,922.3	3.0	-963.2	194.6	8.00	8.00	0.00
7,100.0	18.34	179.78	7,019.2	-21.8	-963.1	218.8	8.00	8.00	0.00
7,200.0	26.34	179.78	7,111.6	-59.8	-962.9	255.9	8.00	8.00	0.00
7,300.0	34.34	179.78	7,197.8	-110.2	-962.7	305.3	8.00	8.00	0.00
7,400.0	42.34	179.78	7,276.2	-172.2	-962.5	365.9	8.00	8.00	0.00
7,500.0	50.34	179.78	7,345.2	-244.5	-962.2	436.6	8.00	8.00	0.00
7,600.0	58.34	179.78	7,403.4	-325.7	-961.9	516.0	8.00	8.00	0.00
7,700.0	66.34	179.78	7,449.8	-414.2	-961.6	602.6	8.00	8.00	0.00
7,800.0	74.34	179.78	7,483.4	-508.3	-961.2	694.6	8.00	8.00	0.00
7,900.0	82.34	179.78	7,503.6	-606.1	-960.9	790.3	8.00	8.00	0.00
7,995.8	90.00	179.78	7,510.0	-701.6	-960.5	883.7	8.00	8.00	0.00
End of Build - 7"									
7,996.5	90.00	179.78	7,510.0	-702.4	-960.5	884.4	0.00	0.00	0.00
Landing Pt. 460'FNL & 2101'FEL, Sec.22									
8,000.0	90.00	179.78	7,510.0	-705.8	-960.5	887.8	0.00	0.00	0.00
8,100.0	90.00	179.78	7,510.0	-805.8	-960.1	985.6	0.00	0.00	0.00
8,200.0	90.00	179.78	7,510.0	-905.8	-959.7	1,083.4	0.00	0.00	0.00
8,300.0	90.00	179.78	7,510.0	-1,005.8	-959.3	1,181.2	0.00	0.00	0.00
8,400.0	90.00	179.78	7,510.0	-1,105.8	-959.0	1,279.0	0.00	0.00	0.00
8,500.0	90.00	179.78	7,510.0	-1,205.8	-958.6	1,376.8	0.00	0.00	0.00
8,600.0	90.00	179.78	7,510.0	-1,305.8	-958.2	1,474.6	0.00	0.00	0.00
8,700.0	90.00	179.78	7,510.0	-1,405.8	-957.8	1,572.4	0.00	0.00	0.00
8,800.0	90.00	179.78	7,510.0	-1,505.8	-957.5	1,670.2	0.00	0.00	0.00
8,900.0	90.00	179.78	7,510.0	-1,605.8	-957.1	1,768.0	0.00	0.00	0.00
9,000.0	90.00	179.78	7,510.0	-1,705.8	-956.7	1,865.8	0.00	0.00	0.00
9,100.0	90.00	179.78	7,510.0	-1,805.8	-956.3	1,963.6	0.00	0.00	0.00
9,200.0	90.00	179.78	7,510.0	-1,905.8	-955.9	2,061.4	0.00	0.00	0.00
9,300.0	90.00	179.78	7,510.0	-2,005.8	-955.6	2,159.1	0.00	0.00	0.00
9,400.0	90.00	179.78	7,510.0	-2,105.8	-955.2	2,256.9	0.00	0.00	0.00

Database:	landmark	Local Co-ordinate Reference:	Well SRC Gies 34-15-22CHZ
Company:	Synergy Resources	TVD Reference:	WELL @ 4852.0ft (RKB - 13')
Project:	SEC.15-T7N-R65W	MD Reference:	WELL @ 4852.0ft (RKB - 13')
Site:	SRC Gies Pad Sec.15-T7N-R65W	North Reference:	True
Well:	SRC Gies 34-15-22CHZ	Survey Calculation Method:	Minimum Curvature
Wellbore:	Wellbore #1		
Design:	Plan #1 (5-6-14)		

Planned Survey									
Measured Depth (ft)	Inclination (°)	Azimuth (°)	Vertical Depth (ft)	+N/-S (ft)	+E/-W (ft)	Vertical Section (ft)	Dogleg Rate (°/100ft)	Build Rate (°/100ft)	Turn Rate (°/100ft)
9,500.0	90.00	179.78	7,510.0	-2,205.8	-954.8	2,354.7	0.00	0.00	0.00
9,600.0	90.00	179.78	7,510.0	-2,305.8	-954.4	2,452.5	0.00	0.00	0.00
9,700.0	90.00	179.78	7,510.0	-2,405.8	-954.1	2,550.3	0.00	0.00	0.00
9,800.0	90.00	179.78	7,510.0	-2,505.8	-953.7	2,648.1	0.00	0.00	0.00
9,900.0	90.00	179.78	7,510.0	-2,605.8	-953.3	2,745.9	0.00	0.00	0.00
10,000.0	90.00	179.78	7,510.0	-2,705.8	-952.9	2,843.7	0.00	0.00	0.00
10,100.0	90.00	179.78	7,510.0	-2,805.8	-952.5	2,941.5	0.00	0.00	0.00
10,200.0	90.00	179.78	7,510.0	-2,905.8	-952.2	3,039.3	0.00	0.00	0.00
10,300.0	90.00	179.78	7,510.0	-3,005.8	-951.8	3,137.1	0.00	0.00	0.00
10,400.0	90.00	179.78	7,510.0	-3,105.8	-951.4	3,234.9	0.00	0.00	0.00
10,500.0	90.00	179.78	7,510.0	-3,205.8	-951.0	3,332.7	0.00	0.00	0.00
10,600.0	90.00	179.78	7,510.0	-3,305.8	-950.6	3,430.5	0.00	0.00	0.00
10,700.0	90.00	179.78	7,510.0	-3,405.8	-950.3	3,528.3	0.00	0.00	0.00
10,800.0	90.00	179.78	7,510.0	-3,505.8	-949.9	3,626.1	0.00	0.00	0.00
10,900.0	90.00	179.78	7,510.0	-3,605.8	-949.5	3,723.9	0.00	0.00	0.00
11,000.0	90.00	179.78	7,510.0	-3,705.8	-949.1	3,821.7	0.00	0.00	0.00
11,100.0	90.00	179.78	7,510.0	-3,805.8	-948.8	3,919.5	0.00	0.00	0.00
11,200.0	90.00	179.78	7,510.0	-3,905.8	-948.4	4,017.3	0.00	0.00	0.00
11,300.0	90.00	179.78	7,510.0	-4,005.8	-948.0	4,115.1	0.00	0.00	0.00
11,400.0	90.00	179.78	7,510.0	-4,105.8	-947.6	4,212.9	0.00	0.00	0.00
11,500.0	90.00	179.78	7,510.0	-4,205.8	-947.2	4,310.7	0.00	0.00	0.00
11,600.0	90.00	179.78	7,510.0	-4,305.8	-946.9	4,408.5	0.00	0.00	0.00
11,700.0	90.00	179.78	7,510.0	-4,405.8	-946.5	4,506.3	0.00	0.00	0.00
11,800.0	90.00	179.78	7,510.0	-4,505.8	-946.1	4,604.1	0.00	0.00	0.00
11,809.9	90.00	179.78	7,510.0	-4,515.7	-946.1	4,613.8	0.00	0.00	0.00
BHL 470'FSL & 2084'FEL, Sec.22									

Casing Points				
Measured Depth (ft)	Vertical Depth (ft)	Name	Casing Diameter (")	Hole Diameter (")
7,995.8	7,510.0	7"	7	7-1/2

Plan Annotations				
Measured Depth (ft)	Vertical Depth (ft)	Local Coordinates		Comment
		+N/-S (ft)	+E/-W (ft)	
200.0	200.0	0.0	0.0	KOP #1
6,870.8	6,793.8	0.6	-38.3	KOP #2
7,995.8	7,510.0	14.0	-924.9	End of Build



Synergy Resources

SEC.15-T7N-R65W

SRC Gies Pad Sec.15-T7N-R65W

SRC Gies 34-15-22CHZ

Wellbore #1

Plan #1 (5-6-14)

Anticollision Report

14 May, 2014

Company:	Synergy Resources	Local Co-ordinate Reference:	Well SRC Gies 34-15-22CHZ
Project:	SEC.15-T7N-R65W	TVD Reference:	WELL @ 4852.0ft (RKB - 13')
Reference Site:	SRC Gies Pad Sec.15-T7N-R65W	MD Reference:	WELL @ 4852.0ft (RKB - 13')
Site Error:	0.0ft	North Reference:	True
Reference Well:	SRC Gies 34-15-22CHZ	Survey Calculation Method:	Minimum Curvature
Well Error:	0.0ft	Output errors are at	2.00 sigma
Reference Wellbore	Wellbore #1	Database:	landmark
Reference Design:	Plan #1 (5-6-14)	Offset TVD Reference:	Offset Datum

Reference	Plan #1 (5-6-14)		
Filter type:	NO GLOBAL FILTER: Using user defined selection & filtering criteria		
Interpolation Method:	MD Interval 100.0ft	Error Model:	ISCWSA
Depth Range:	Unlimited	Scan Method:	Closest Approach 3D
Results Limited by:	Maximum center-center distance of 1,000.0ft	Error Surface:	Elliptical Conic
Warning Levels Evaluated at:	2.00 Sigma		

Survey Tool Program	Date 5/14/2014			
From (ft)	To (ft)	Survey (Wellbore)	Tool Name	Description
0.0	11,809.9	Plan #1 (5-6-14) (Wellbore #1)	MWD	MWD - Standard

Summary						
Site Name	Reference Measured Depth (ft)	Offset Measured Depth (ft)	Distance Between Centres (ft)	Distance Between Ellipses (ft)	Separation Factor	Warning
Offset Well - Wellbore - Design						
Existing Wells Pad Sec.15-T7N-R65W						
Decalta-Nielson-Gies 32-22 (D&A) - Wellbore #1 - Wellb	9,034.2	7,491.0	118.8	-68.7	0.634	Level 1, CC, ES, SF
SRC Gies Pad Sec.15-T7N-R65W						
SRC Gies 34-15-22NHZ - Wellbore #1 - Plan #1 (5-7-14)	200.0	199.0	20.0	19.3	29.785	CC, ES
SRC Gies 34-15-22NHZ - Wellbore #1 - Plan #1 (5-7-14)	11,809.9	11,507.1	347.2	227.2	2.893	SF
SRC Gies 44-15-22CHZ - Wellbore #1 - Plan #1 (5-7-14)	200.0	199.0	120.1	119.4	178.674	CC, ES
SRC Gies 44-15-22CHZ - Wellbore #1 - Plan #1 (5-7-14)	4,300.0	4,257.5	987.0	967.5	50.421	SF
SRC Gies 44-15-22NHZ - Wellbore #1 - Plan #1 (5-7-14)	200.0	199.0	139.8	139.1	208.030	CC, ES
SRC Gies 44-15-22NHZ - Wellbore #1 - Plan #1 (5-7-14)	3,700.0	3,568.3	976.7	959.8	58.097	SF
SRC Gies D-15-22CHZ - Wellbore #1 - Plan #1 (5-7-14)	200.0	199.0	80.1	79.4	119.122	CC, ES
SRC Gies D-15-22CHZ - Wellbore #1 - Plan #1 (5-7-14)	11,809.9	11,708.1	879.6	703.2	4.985	SF
SRC Gies D-15-22NHZ - Wellbore #1 - Plan #1 (5-7-14)	200.0	199.0	99.8	99.1	148.477	CC, ES
SRC Gies D-15-22NHZ - Wellbore #1 - Plan #1 (5-7-14)	5,700.0	5,629.9	995.5	969.6	38.505	SF
SRC Gies T-15-22CHZ - Wellbore #1 - Plan #1 (5-7-14)	200.0	199.0	40.0	39.4	59.553	CC, ES
SRC Gies T-15-22CHZ - Wellbore #1 - Plan #1 (5-7-14)	11,809.9	11,748.3	439.8	263.1	2.489	SF
SRC Gies T-15-22NHZ - Wellbore #1 - Plan #1 (5-7-14)	200.0	199.0	60.0	59.4	89.337	CC, ES
SRC Gies T-15-22NHZ - Wellbore #1 - Plan #1 (5-7-14)	11,809.9	11,458.3	712.6	548.7	4.346	SF

Offset Design													
Existing Wells Pad Sec.15-T7N-R65W - Decalta-Nielson-Gies 32-22 (D&A) - Wellbore #1 - Wellbore #1													
Survey Program: 7795-UNKNOWN													
Reference													
Offset													
Semi Major Axis													
Measured Depth (ft)	Vertical Depth (ft)	Measured Depth (ft)	Vertical Depth (ft)	Reference (ft)	Offset (ft)	Highside Toolface (°)	Offset Wellbore Centre +N/-S (ft)	+E/-W (ft)	Distance Between Centres (ft)	Distance Between Ellipses (ft)	Minimum Separation (ft)	Separation Factor	Warning
8,100.0	7,510.0	7,491.0	7,491.0	28.5	149.8	-90.00	-1,739.6	-837.7	941.8	768.6	173.19	5.438	
8,200.0	7,510.0	7,491.0	7,491.0	29.5	149.8	-90.00	-1,739.6	-837.7	842.7	668.2	174.50	4.829	
8,300.0	7,510.0	7,491.0	7,491.0	30.6	149.8	-90.00	-1,739.6	-837.7	743.8	567.9	175.89	4.229	
8,400.0	7,510.0	7,491.0	7,491.0	31.8	149.8	-90.00	-1,739.6	-837.7	645.3	467.9	177.34	3.639	
8,500.0	7,510.0	7,491.0	7,491.0	33.1	149.8	-90.00	-1,739.6	-837.7	547.3	368.5	178.85	3.060	
8,600.0	7,510.0	7,491.0	7,491.0	34.5	149.8	-90.00	-1,739.6	-837.7	450.2	269.8	180.41	2.496	
8,700.0	7,510.0	7,491.0	7,491.0	35.9	149.8	-90.00	-1,739.6	-837.7	354.7	172.7	182.00	1.949	
8,800.0	7,510.0	7,491.0	7,491.0	37.3	149.8	-90.00	-1,739.6	-837.7	262.7	79.0	183.63	1.430	Level 3
8,900.0	7,510.0	7,491.0	7,491.0	38.8	149.8	-90.00	-1,739.6	-837.7	179.3	-6.0	185.29	0.968	Level 1
9,000.0	7,510.0	7,491.0	7,491.0	40.3	149.8	-90.00	-1,739.6	-837.7	123.7	-63.3	186.97	0.662	Level 1
9,034.2	7,510.0	7,491.0	7,491.0	40.9	149.8	-90.00	-1,739.6	-837.7	118.8	-68.7	187.56	0.634	Level 1, CC, ES, SF

CC - Min centre to center distance or convergent point, SF - min separation factor, ES - min ellipse separation

Company:	Synergy Resources	Local Co-ordinate Reference:	Well SRC Gies 34-15-22CHZ
Project:	SEC.15-T7N-R65W	TVD Reference:	WELL @ 4852.0ft (RKB - 13')
Reference Site:	SRC Gies Pad Sec.15-T7N-R65W	MD Reference:	WELL @ 4852.0ft (RKB - 13')
Site Error:	0.0ft	North Reference:	True
Reference Well:	SRC Gies 34-15-22CHZ	Survey Calculation Method:	Minimum Curvature
Well Error:	0.0ft	Output errors are at	2.00 sigma
Reference Wellbore	Wellbore #1	Database:	landmark
Reference Design:	Plan #1 (5-6-14)	Offset TVD Reference:	Offset Datum

Offset Design													Existing Wells Pad Sec.15-T7N-R65W - Decalta-Nielson-Gies 32-22 (D&A) - Wellbore #1 - Wellbore #1	Offset Site Error:	0.0 ft
Survey Program: 7795-UNKNOWN														Offset Well Error:	0.0 ft
Reference		Offset		Semi Major Axis			Distance								
Measured Depth (ft)	Vertical Depth (ft)	Measured Depth (ft)	Vertical Depth (ft)	Reference (ft)	Offset (ft)	Highside Toolface (°)	Offset Wellbore Centre +N/-S (ft)	+E/-W (ft)	Between Centres (ft)	Between Ellipses (ft)	Minimum Separation (ft)	Separation Factor	Warning		
9,100.0	7,510.0	7,491.0	7,491.0	41.9	149.8	-90.00	-1,739.6	-837.7	135.8	-52.9	188.68	0.720	Level 1		
9,200.0	7,510.0	7,491.0	7,491.0	43.5	149.8	-90.00	-1,739.6	-837.7	204.0	13.6	190.40	1.071	Level 2		
9,300.0	7,510.0	7,491.0	7,491.0	45.1	149.8	-90.00	-1,739.6	-837.7	291.1	99.0	192.15	1.515			
9,400.0	7,510.0	7,491.0	7,491.0	46.8	149.8	-90.00	-1,739.6	-837.7	384.6	190.7	193.91	1.983			
9,500.0	7,510.0	7,491.0	7,491.0	48.5	149.8	-90.00	-1,739.6	-837.7	480.7	285.0	195.68	2.456			
9,600.0	7,510.0	7,491.0	7,491.0	50.1	149.8	-90.00	-1,739.6	-837.7	578.1	380.6	197.46	2.928			
9,700.0	7,510.0	7,491.0	7,491.0	51.9	149.8	-90.00	-1,739.6	-837.7	676.3	477.0	199.26	3.394			
9,800.0	7,510.0	7,491.0	7,491.0	53.6	149.8	-90.00	-1,739.6	-837.7	774.9	573.9	201.06	3.854			
9,900.0	7,510.0	7,491.0	7,491.0	55.3	149.8	-90.00	-1,739.6	-837.7	873.9	671.0	202.87	4.308			
10,000.0	7,510.0	7,491.0	7,491.0	57.1	149.8	-90.00	-1,739.6	-837.7	973.0	768.4	204.69	4.754			

Company:	Synergy Resources	Local Co-ordinate Reference:	Well SRC Gies 34-15-22CHZ
Project:	SEC.15-T7N-R65W	TVD Reference:	WELL @ 4852.0ft (RKB - 13')
Reference Site:	SRC Gies Pad Sec.15-T7N-R65W	MD Reference:	WELL @ 4852.0ft (RKB - 13')
Site Error:	0.0ft	North Reference:	True
Reference Well:	SRC Gies 34-15-22CHZ	Survey Calculation Method:	Minimum Curvature
Well Error:	0.0ft	Output errors are at	2.00 sigma
Reference Wellbore	Wellbore #1	Database:	landmark
Reference Design:	Plan #1 (5-6-14)	Offset TVD Reference:	Offset Datum

Offset Design												Offset Site Error:	0.0 ft
Survey Program: 0-MWD												Offset Well Error:	0.0 ft
Reference		Offset		Semi Major Axis			Distance						
Measured Depth (ft)	Vertical Depth (ft)	Measured Depth (ft)	Vertical Depth (ft)	Reference (ft)	Offset (ft)	Highside Toolface (°)	Offset Wellbore Centre +N/-S (ft)	+E/-W (ft)	Between Centres (ft)	Between Ellipses (ft)	Minimum Separation (ft)	Separation Factor	Warning
0.0	0.0	0.0	0.0	0.0	0.0	92.07	-0.7	20.0	20.0				
100.0	100.0	99.0	99.0	0.1	0.1	92.07	-0.7	20.0	20.0	19.8	0.22	89.504	
200.0	200.0	199.0	199.0	0.3	0.3	92.07	-0.7	20.0	20.0	19.3	0.67	29.785 CC, ES	
300.0	300.0	299.0	299.0	0.6	0.6	-178.89	-0.7	20.0	21.8	20.6	1.12	19.467	
400.0	399.8	398.8	398.8	0.8	0.8	-179.10	-0.7	20.0	27.0	25.4	1.57	17.234	
500.0	499.5	499.7	499.6	1.0	1.0	-179.28	-0.7	18.3	34.0	32.0	2.00	16.971	
600.0	598.7	600.7	600.6	1.3	1.2	-179.37	-0.6	13.0	41.0	38.5	2.43	16.832	
700.0	697.5	702.1	701.5	1.7	1.5	-179.42	-0.5	4.1	47.7	44.9	2.88	16.588	
800.0	796.2	803.6	802.3	2.0	1.7	-179.42	-0.4	-8.4	51.8	48.5	3.34	15.528	
900.0	894.8	903.6	901.3	2.4	2.0	-179.39	-0.2	-22.1	54.4	50.6	3.81	14.286	
1,000.0	993.5	1,003.5	1,000.3	2.7	2.3	-179.37	-0.1	-35.8	57.0	52.7	4.28	13.299	
1,100.0	1,092.1	1,103.5	1,099.3	3.1	2.7	-179.35	0.1	-49.6	59.6	54.8	4.77	12.499	
1,200.0	1,190.8	1,203.5	1,198.3	3.5	3.0	-179.33	0.2	-63.3	62.2	56.9	5.25	11.839	
1,300.0	1,289.5	1,303.4	1,297.4	3.9	3.3	-179.32	0.4	-77.0	64.8	59.0	5.74	11.286	
1,400.0	1,388.1	1,403.4	1,396.4	4.3	3.7	-179.30	0.6	-90.8	67.4	61.1	6.23	10.817	
1,500.0	1,486.8	1,503.4	1,495.4	4.6	4.0	-179.28	0.7	-104.5	70.0	63.2	6.72	10.413	
1,600.0	1,585.5	1,603.3	1,594.4	5.0	4.3	-179.27	0.9	-118.2	72.6	65.3	7.21	10.063	
1,700.0	1,684.1	1,703.3	1,693.4	5.4	4.7	-179.26	1.0	-132.0	75.1	67.4	7.70	9.757	
1,800.0	1,782.8	1,803.3	1,792.5	5.8	5.0	-179.25	1.2	-145.7	77.7	69.5	8.20	9.487	
1,900.0	1,881.4	1,903.2	1,891.5	6.2	5.4	-179.23	1.3	-159.4	80.3	71.6	8.69	9.246	
2,000.0	1,980.1	2,003.2	1,990.5	6.6	5.7	-179.22	1.5	-173.2	82.9	73.7	9.18	9.031	
2,100.0	2,078.8	2,103.2	2,089.5	7.0	6.0	-179.21	1.7	-186.9	85.5	75.8	9.68	8.838	
2,200.0	2,177.4	2,203.1	2,188.5	7.3	6.4	-179.21	1.8	-200.6	88.1	77.9	10.17	8.663	
2,300.0	2,276.1	2,303.1	2,287.5	7.7	6.7	-179.20	2.0	-214.4	90.7	80.0	10.67	8.504	
2,400.0	2,374.7	2,403.1	2,386.6	8.1	7.1	-179.19	2.1	-228.1	93.3	82.1	11.16	8.358	
2,500.0	2,473.4	2,503.0	2,485.6	8.5	7.4	-179.18	2.3	-241.8	95.9	84.2	11.66	8.226	
2,600.0	2,572.1	2,603.0	2,584.6	8.9	7.8	-179.17	2.5	-255.5	98.5	86.3	12.16	8.103	
2,700.0	2,670.7	2,703.0	2,683.6	9.3	8.1	-179.17	2.6	-269.3	101.1	88.4	12.65	7.991	
2,800.0	2,769.4	2,802.9	2,782.6	9.7	8.4	-179.16	2.8	-283.0	103.7	90.5	13.15	7.886	
2,900.0	2,868.1	2,902.9	2,881.7	10.0	8.8	-179.15	2.9	-296.7	106.3	92.6	13.64	7.789	
3,000.0	2,966.7	3,002.9	2,980.7	10.4	9.1	-179.15	3.1	-310.5	108.9	94.7	14.14	7.699	
3,100.0	3,065.4	3,102.8	3,079.7	10.8	9.5	-179.14	3.2	-324.2	111.5	96.8	14.64	7.615	
3,200.0	3,164.0	3,202.8	3,178.7	11.2	9.8	-179.14	3.4	-337.9	114.1	98.9	15.14	7.537	
3,300.0	3,262.7	3,302.8	3,277.7	11.6	10.2	-179.13	3.6	-351.7	116.7	101.0	15.63	7.463	
3,400.0	3,361.4	3,402.7	3,376.8	12.0	10.5	-179.13	3.7	-365.4	119.3	103.1	16.13	7.394	
3,500.0	3,460.0	3,502.7	3,475.8	12.4	10.9	-179.12	3.9	-379.1	121.9	105.2	16.63	7.329	
3,600.0	3,558.7	3,602.7	3,574.8	12.7	11.2	-179.12	4.0	-392.9	124.4	107.3	17.12	7.267	
3,700.0	3,657.4	3,702.6	3,673.8	13.1	11.6	-179.11	4.2	-406.6	127.0	109.4	17.62	7.210	
3,800.0	3,756.0	3,802.6	3,772.8	13.5	11.9	-179.11	4.4	-420.3	129.6	111.5	18.12	7.155	
3,900.0	3,854.7	3,902.6	3,871.8	13.9	12.2	-179.10	4.5	-434.1	132.2	113.6	18.62	7.103	
4,000.0	3,953.3	4,002.5	3,970.9	14.3	12.6	-179.10	4.7	-447.8	134.8	115.7	19.11	7.054	
4,100.0	4,052.0	4,102.5	4,069.9	14.7	12.9	-179.10	4.8	-461.5	137.4	117.8	19.61	7.007	
4,200.0	4,150.7	4,202.5	4,168.9	15.1	13.3	-179.09	5.0	-475.3	140.0	119.9	20.11	6.963	
4,300.0	4,249.3	4,302.4	4,267.9	15.5	13.6	-179.09	5.1	-489.0	142.6	122.0	20.61	6.921	
4,400.0	4,348.0	4,402.4	4,366.9	15.8	14.0	-179.08	5.3	-502.7	145.2	124.1	21.10	6.880	
4,500.0	4,446.7	4,502.4	4,466.0	16.2	14.3	-179.08	5.5	-516.5	147.8	126.2	21.60	6.842	
4,600.0	4,545.3	4,602.3	4,565.0	16.6	14.7	-179.08	5.6	-530.2	150.4	128.3	22.10	6.805	
4,700.0	4,644.0	4,702.3	4,664.0	17.0	15.0	-179.08	5.8	-543.9	153.0	130.4	22.60	6.770	
4,800.0	4,742.6	4,802.3	4,763.0	17.4	15.4	-179.07	5.9	-557.7	155.6	132.5	23.10	6.737	
4,900.0	4,841.3	4,902.2	4,862.0	17.8	15.7	-179.07	6.1	-571.4	158.2	134.6	23.59	6.704	
5,000.0	4,940.0	5,002.2	4,961.0	18.2	16.1	-179.07	6.3	-585.1	160.8	136.7	24.09	6.673	
5,100.0	5,038.6	5,102.2	5,060.1	18.5	16.4	-179.06	6.4	-598.9	163.4	138.8	24.59	6.644	

CC - Min centre to center distance or convergent point, SF - min separation factor, ES - min ellipse separation

Company:	Synergy Resources	Local Co-ordinate Reference:	Well SRC Gies 34-15-22CHZ
Project:	SEC.15-T7N-R65W	TVD Reference:	WELL @ 4852.0ft (RKB - 13')
Reference Site:	SRC Gies Pad Sec.15-T7N-R65W	MD Reference:	WELL @ 4852.0ft (RKB - 13')
Site Error:	0.0ft	North Reference:	True
Reference Well:	SRC Gies 34-15-22CHZ	Survey Calculation Method:	Minimum Curvature
Well Error:	0.0ft	Output errors are at	2.00 sigma
Reference Wellbore	Wellbore #1	Database:	landmark
Reference Design:	Plan #1 (5-6-14)	Offset TVD Reference:	Offset Datum

Offset Design												Offset Site Error:	0.0 ft
Survey Program: 0-MWD												Offset Well Error:	0.0 ft
Reference		Offset		Semi Major Axis			Distance						
Measured Depth (ft)	Vertical Depth (ft)	Measured Depth (ft)	Vertical Depth (ft)	Reference (ft)	Offset (ft)	Highside Toolface (°)	Offset Wellbore Centre +N/-S (ft)	+E/-W (ft)	Between Centres (ft)	Between Ellipses (ft)	Minimum Separation (ft)	Separation Factor	Warning
5,200.0	5,137.3	5,202.1	5,159.1	18.9	16.7	-179.06	6.6	-612.6	166.0	140.9	25.09	6.615	
5,300.0	5,236.0	5,302.1	5,258.1	19.3	17.1	-179.06	6.7	-626.3	168.6	143.0	25.59	6.588	
5,400.0	5,334.6	5,402.1	5,357.1	19.7	17.4	-179.06	6.9	-640.1	171.2	145.1	26.08	6.562	
5,500.0	5,433.3	5,502.0	5,456.1	20.1	17.8	-179.05	7.0	-653.8	173.7	147.2	26.58	6.536	
5,600.0	5,531.9	5,602.0	5,555.2	20.5	18.1	-179.05	7.2	-667.5	176.3	149.3	27.08	6.512	
5,700.0	5,630.6	5,702.0	5,654.2	20.9	18.5	-179.05	7.4	-681.3	178.9	151.4	27.58	6.489	
5,800.0	5,729.3	5,801.9	5,753.2	21.3	18.8	-179.05	7.5	-695.0	181.5	153.5	28.08	6.466	
5,900.0	5,827.9	5,901.9	5,852.2	21.6	19.2	-179.05	7.7	-708.7	184.1	155.6	28.57	6.444	
6,000.0	5,926.6	6,000.0	5,949.4	22.0	19.5	-179.05	7.8	-721.9	187.1	158.0	29.05	6.438	
6,100.0	6,025.2	6,092.7	6,041.6	22.4	19.7	-179.06	7.9	-731.7	192.8	163.3	29.48	6.539	
6,200.0	6,124.1	6,186.0	6,134.7	22.7	19.9	-179.09	8.0	-738.6	200.2	170.4	29.88	6.703	
6,300.0	6,223.5	6,279.1	6,227.7	23.0	20.0	-179.12	8.1	-742.5	207.5	177.3	30.20	6.871	
6,400.0	6,323.2	6,373.6	6,322.2	23.2	20.1	-179.15	8.1	-743.4	214.4	184.0	30.49	7.034	
6,500.0	6,423.1	6,473.5	6,422.1	23.3	20.3	-179.16	8.1	-743.4	218.9	188.1	30.76	7.116	
6,600.0	6,523.1	6,573.5	6,522.1	23.4	20.4	91.70	8.1	-743.4	219.9	188.9	31.03	7.086	
6,700.0	6,623.1	6,671.9	6,620.2	23.6	20.6	93.39	1.6	-743.4	220.2	188.8	31.46	7.001	
6,800.0	6,723.1	6,766.8	6,713.1	23.7	20.7	98.28	-17.4	-743.3	222.4	190.2	32.16	6.916	
6,900.0	6,823.0	6,855.5	6,796.9	23.8	20.8	-74.28	-46.0	-743.2	229.4	196.1	33.38	6.874	
7,000.0	6,922.3	6,940.0	6,873.0	23.9	21.0	-66.87	-82.8	-743.1	241.1	206.3	34.85	6.918	
7,100.0	7,019.2	7,021.9	6,942.1	24.1	21.1	-60.50	-126.7	-742.9	255.5	219.4	36.10	7.077	
7,200.0	7,111.6	7,100.0	7,002.9	24.2	21.3	-55.25	-175.7	-742.7	271.2	234.4	36.78	7.373	
7,300.0	7,197.8	7,179.5	7,058.9	24.4	21.5	-50.82	-232.1	-742.5	287.0	250.2	36.82	7.794	
7,400.0	7,276.2	7,256.0	7,106.6	24.6	21.8	-47.33	-291.8	-742.3	302.0	265.9	36.18	8.349	
7,500.0	7,345.2	7,331.3	7,147.0	24.8	22.1	-44.58	-355.3	-742.0	315.6	280.6	34.97	9.025	
7,600.0	7,403.4	7,400.0	7,178.0	25.1	22.5	-42.58	-416.6	-741.8	327.2	293.9	33.34	9.816	
7,700.0	7,449.8	7,479.3	7,206.2	25.6	23.0	-40.95	-490.7	-741.5	336.3	304.8	31.59	10.649	
7,800.0	7,483.4	7,550.0	7,224.3	26.1	23.5	-39.94	-559.0	-741.3	342.9	313.0	29.84	11.491	
7,900.0	7,503.6	7,625.3	7,236.1	26.8	24.2	-39.36	-633.3	-741.0	346.6	318.1	28.43	12.192	
8,000.0	7,510.0	7,700.2	7,240.0	27.6	24.9	-39.25	-708.1	-740.7	347.4	319.7	27.62	12.577	
8,034.6	7,510.0	7,731.7	7,240.0	27.9	25.2	-39.24	-739.6	-740.6	347.3	319.2	28.14	12.342	
8,100.0	7,510.0	7,797.1	7,240.0	28.5	25.9	-39.24	-805.0	-740.4	347.3	318.2	29.18	11.902	
8,200.0	7,510.0	7,897.1	7,240.0	29.5	27.1	-39.24	-905.0	-740.0	347.3	316.4	30.92	11.232	
8,300.0	7,510.0	7,997.1	7,240.0	30.6	28.3	-39.24	-1,005.0	-739.6	347.3	314.5	32.79	10.592	
8,400.0	7,510.0	8,097.1	7,240.0	31.8	29.6	-39.24	-1,105.0	-739.2	347.3	312.6	34.77	9.990	
8,500.0	7,510.0	8,197.1	7,240.0	33.1	31.0	-39.24	-1,205.0	-738.9	347.3	310.5	36.83	9.430	
8,600.0	7,510.0	8,297.1	7,240.0	34.5	32.5	-39.24	-1,305.0	-738.5	347.3	308.4	38.98	8.911	
8,700.0	7,510.0	8,397.1	7,240.0	35.9	34.0	-39.24	-1,405.0	-738.1	347.3	306.1	41.18	8.434	
8,800.0	7,510.0	8,497.1	7,240.0	37.3	35.5	-39.24	-1,505.0	-737.7	347.3	303.9	43.44	7.995	
8,900.0	7,510.0	8,597.1	7,240.0	38.8	37.1	-39.24	-1,605.0	-737.4	347.3	301.6	45.75	7.592	
9,000.0	7,510.0	8,697.1	7,240.0	40.3	38.7	-39.24	-1,705.0	-737.0	347.3	299.2	48.10	7.221	
9,100.0	7,510.0	8,797.1	7,240.0	41.9	40.3	-39.24	-1,805.0	-736.6	347.3	296.8	50.48	6.880	
9,200.0	7,510.0	8,897.1	7,240.0	43.5	42.0	-39.24	-1,905.0	-736.3	347.3	294.4	52.89	6.567	
9,300.0	7,510.0	8,997.1	7,240.0	45.1	43.7	-39.24	-2,005.0	-735.9	347.3	292.0	55.32	6.278	
9,400.0	7,510.0	9,097.1	7,240.0	46.8	45.4	-39.24	-2,105.0	-735.5	347.3	289.5	57.78	6.011	
9,500.0	7,510.0	9,197.1	7,240.0	48.5	47.1	-39.24	-2,205.0	-735.1	347.3	287.0	60.26	5.763	
9,600.0	7,510.0	9,297.1	7,240.0	50.1	48.8	-39.24	-2,305.0	-734.8	347.3	284.5	62.76	5.534	
9,700.0	7,510.0	9,397.1	7,240.0	51.9	50.6	-39.23	-2,405.0	-734.4	347.3	282.0	65.27	5.321	
9,800.0	7,510.0	9,497.1	7,240.0	53.6	52.4	-39.23	-2,505.0	-734.0	347.3	279.5	67.79	5.123	
9,900.0	7,510.0	9,597.1	7,240.0	55.3	54.1	-39.23	-2,605.0	-733.6	347.3	277.0	70.33	4.938	
10,000.0	7,510.0	9,697.1	7,240.0	57.1	55.9	-39.23	-2,705.0	-733.3	347.3	274.4	72.87	4.766	
10,100.0	7,510.0	9,797.1	7,240.0	58.8	57.7	-39.23	-2,805.0	-732.9	347.3	271.9	75.43	4.604	
10,200.0	7,510.0	9,897.1	7,240.0	60.6	59.5	-39.23	-2,905.0	-732.5	347.3	269.3	78.00	4.453	

CC - Min centre to center distance or convergent point, SF - min separation factor, ES - min ellipse separation

Company:	Synergy Resources	Local Co-ordinate Reference:	Well SRC Gies 34-15-22CHZ
Project:	SEC.15-T7N-R65W	TVD Reference:	WELL @ 4852.0ft (RKB - 13')
Reference Site:	SRC Gies Pad Sec.15-T7N-R65W	MD Reference:	WELL @ 4852.0ft (RKB - 13')
Site Error:	0.0ft	North Reference:	True
Reference Well:	SRC Gies 34-15-22CHZ	Survey Calculation Method:	Minimum Curvature
Well Error:	0.0ft	Output errors are at	2.00 sigma
Reference Wellbore	Wellbore #1	Database:	landmark
Reference Design:	Plan #1 (5-6-14)	Offset TVD Reference:	Offset Datum

Offset Design SRC Gies Pad Sec.15-T7N-R65W - SRC Gies 34-15-22NHZ - Wellbore #1 - Plan #1 (5-7-14)												Offset Site Error:	0.0 ft
Survey Program: 0-MWD												Offset Well Error:	0.0 ft
Reference		Offset		Semi Major Axis			Distance						Warning
Measured Depth (ft)	Vertical Depth (ft)	Measured Depth (ft)	Vertical Depth (ft)	Reference (ft)	Offset (ft)	Highside Toolface (°)	Offset Wellbore Centre +N/-S (ft)	+E/-W (ft)	Between Centres (ft)	Between Ellipses (ft)	Minimum Separation (ft)	Separation Factor	
10,300.0	7,510.0	9,997.1	7,240.0	62.4	61.3	-39.23	-3,005.0	-732.1	347.3	266.7	80.57	4.310	
10,400.0	7,510.0	10,097.1	7,240.0	64.1	63.1	-39.23	-3,105.0	-731.8	347.3	264.1	83.15	4.176	
10,500.0	7,510.0	10,197.1	7,240.0	65.9	64.9	-39.23	-3,205.0	-731.4	347.3	261.5	85.74	4.050	
10,600.0	7,510.0	10,297.1	7,240.0	67.7	66.8	-39.23	-3,305.0	-731.0	347.3	258.9	88.33	3.931	
10,700.0	7,510.0	10,397.1	7,240.0	69.6	68.6	-39.23	-3,405.0	-730.7	347.3	256.3	90.93	3.819	
10,800.0	7,510.0	10,497.1	7,240.0	71.4	70.4	-39.23	-3,505.0	-730.3	347.3	253.7	93.53	3.713	
10,900.0	7,510.0	10,597.1	7,240.0	73.2	72.3	-39.23	-3,605.0	-729.9	347.3	251.1	96.14	3.612	
11,000.0	7,510.0	10,697.1	7,240.0	75.0	74.1	-39.23	-3,705.0	-729.5	347.3	248.5	98.75	3.516	
11,100.0	7,510.0	10,797.1	7,240.0	76.8	76.0	-39.23	-3,805.0	-729.2	347.3	245.9	101.37	3.426	
11,200.0	7,510.0	10,897.1	7,240.0	78.7	77.8	-39.23	-3,905.0	-728.8	347.2	243.3	103.99	3.339	
11,300.0	7,510.0	10,997.1	7,240.0	80.5	79.7	-39.23	-4,005.0	-728.4	347.2	240.6	106.61	3.257	
11,400.0	7,510.0	11,097.1	7,240.0	82.4	81.6	-39.22	-4,105.0	-728.0	347.2	238.0	109.24	3.179	
11,500.0	7,510.0	11,197.1	7,240.0	84.2	83.4	-39.22	-4,205.0	-727.7	347.2	235.4	111.87	3.104	
11,600.0	7,510.0	11,297.1	7,240.0	86.1	85.3	-39.22	-4,305.0	-727.3	347.2	232.7	114.50	3.033	
11,700.0	7,510.0	11,397.1	7,240.0	87.9	87.2	-39.22	-4,405.0	-726.9	347.2	230.1	117.14	2.964	
11,800.0	7,510.0	11,497.1	7,240.0	89.8	89.0	-39.22	-4,505.0	-726.6	347.2	227.5	119.77	2.899	
11,809.9	7,510.0	11,507.1	7,240.0	90.0	89.2	-39.22	-4,514.9	-726.5	347.2	227.2	120.04	2.893 SF	

Company:	Synergy Resources	Local Co-ordinate Reference:	Well SRC Gies 34-15-22CHZ
Project:	SEC.15-T7N-R65W	TVD Reference:	WELL @ 4852.0ft (RKB - 13')
Reference Site:	SRC Gies Pad Sec.15-T7N-R65W	MD Reference:	WELL @ 4852.0ft (RKB - 13')
Site Error:	0.0ft	North Reference:	True
Reference Well:	SRC Gies 34-15-22CHZ	Survey Calculation Method:	Minimum Curvature
Well Error:	0.0ft	Output errors are at	2.00 sigma
Reference Wellbore	Wellbore #1	Database:	landmark
Reference Design:	Plan #1 (5-6-14)	Offset TVD Reference:	Offset Datum

Offset Design													Offset Site Error:	0.0 ft
Survey Program: 0-MWD													Offset Well Error:	0.0 ft
Reference		Offset		Semi Major Axis			Distance							Warning
Measured Depth (ft)	Vertical Depth (ft)	Measured Depth (ft)	Vertical Depth (ft)	Reference (ft)	Offset (ft)	Highside Toolface (°)	Offset Wellbore Centre +N/-S (ft)	+E/-W (ft)	Between Centres (ft)	Between Ellipses (ft)	Minimum Separation (ft)	Separation Factor		
0.0	0.0	0.0	0.0	0.0	0.0	91.74	-3.6	120.0	120.1					
100.0	100.0	99.0	99.0	0.1	0.1	91.74	-3.6	120.0	120.1	119.9	0.22	536.916		
200.0	200.0	199.0	199.0	0.3	0.3	91.74	-3.6	120.0	120.1	119.4	0.67	178.674 CC, ES		
300.0	300.0	299.0	299.0	0.6	0.6	-179.14	-3.6	120.0	121.8	120.7	1.12	108.976		
400.0	399.8	398.8	398.8	0.8	0.8	-179.18	-3.6	120.0	127.1	125.5	1.57	81.115		
500.0	499.5	498.5	498.5	1.0	1.0	-179.23	-3.6	120.0	135.8	133.7	2.02	67.190		
600.0	598.7	597.7	597.7	1.3	1.2	-179.29	-3.6	120.0	148.0	145.5	2.48	59.703		
700.0	697.5	696.5	696.5	1.7	1.5	-179.35	-3.6	120.0	163.4	160.5	2.93	55.692		
800.0	796.2	795.2	795.2	2.0	1.7	-179.41	-3.6	120.0	179.7	176.3	3.39	53.040		
900.0	894.8	887.8	887.8	2.4	1.9	-179.43	-3.8	121.4	197.5	193.6	3.83	51.596		
1,000.0	993.5	979.0	978.9	2.7	2.1	-179.39	-4.2	125.6	218.3	214.1	4.26	51.199		
1,100.0	1,092.1	1,072.3	1,071.9	3.1	2.3	-179.31	-4.8	132.6	242.0	237.3	4.71	51.370		
1,200.0	1,190.8	1,169.4	1,168.7	3.5	2.5	-179.24	-5.5	140.3	266.1	260.9	5.15	51.646		
1,300.0	1,289.5	1,266.4	1,265.4	3.9	2.7	-179.18	-6.3	147.9	290.1	284.5	5.60	51.843		
1,400.0	1,388.1	1,363.5	1,362.2	4.3	2.9	-179.13	-7.0	155.6	314.2	308.2	6.05	51.976		
1,500.0	1,486.8	1,460.5	1,458.9	4.6	3.2	-179.09	-7.7	163.3	338.3	331.8	6.50	52.065		
1,600.0	1,585.5	1,557.6	1,555.7	5.0	3.4	-179.05	-8.4	171.0	362.4	355.4	6.95	52.124		
1,700.0	1,684.1	1,654.6	1,652.4	5.4	3.7	-179.02	-9.2	178.7	386.5	379.1	7.41	52.153		
1,800.0	1,782.8	1,751.7	1,749.2	5.8	3.9	-178.99	-9.9	186.4	410.6	402.7	7.87	52.174		
1,900.0	1,881.4	1,848.8	1,845.9	6.2	4.2	-178.96	-10.6	194.1	434.7	426.3	8.33	52.182		
2,000.0	1,980.1	1,945.8	1,942.7	6.6	4.4	-178.94	-11.3	201.8	458.7	449.9	8.79	52.181		
2,100.0	2,078.8	2,042.9	2,039.4	7.0	4.7	-178.92	-12.0	209.5	482.8	473.6	9.25	52.173		
2,200.0	2,177.4	2,139.9	2,136.2	7.3	4.9	-178.90	-12.8	217.2	506.9	497.2	9.72	52.162		
2,300.0	2,276.1	2,237.0	2,232.9	7.7	5.2	-178.88	-13.5	224.8	531.0	520.8	10.18	52.147		
2,400.0	2,374.7	2,334.0	2,329.7	8.1	5.4	-178.86	-14.2	232.5	555.1	544.4	10.65	52.129		
2,500.0	2,473.4	2,431.1	2,426.4	8.5	5.7	-178.85	-14.9	240.2	579.2	568.1	11.11	52.111		
2,600.0	2,572.1	2,528.1	2,523.1	8.9	5.9	-178.84	-15.7	247.9	603.3	591.7	11.58	52.091		
2,700.0	2,670.7	2,625.2	2,619.9	9.3	6.2	-178.82	-16.4	255.6	627.3	615.3	12.05	52.070		
2,800.0	2,769.4	2,722.3	2,716.6	9.7	6.5	-178.81	-17.1	263.3	651.4	638.9	12.52	52.049		
2,900.0	2,868.1	2,819.3	2,813.4	10.0	6.7	-178.80	-17.8	271.0	675.5	662.5	12.98	52.028		
3,000.0	2,966.7	2,916.4	2,910.1	10.4	7.0	-178.79	-18.5	278.7	699.6	686.1	13.45	52.007		
3,100.0	3,065.4	3,013.4	3,006.9	10.8	7.2	-178.78	-19.3	286.4	723.7	709.8	13.92	51.986		
3,200.0	3,164.0	3,110.5	3,103.6	11.2	7.5	-178.77	-20.0	294.1	747.8	733.4	14.39	51.965		
3,300.0	3,262.7	3,207.5	3,200.4	11.6	7.7	-178.77	-20.7	301.7	771.9	757.0	14.86	51.945		
3,400.0	3,361.4	3,304.6	3,297.1	12.0	8.0	-178.76	-21.4	309.4	795.9	780.6	15.33	51.925		
3,500.0	3,460.0	3,401.6	3,393.9	12.4	8.3	-178.75	-22.2	317.1	820.0	804.2	15.80	51.905		
3,600.0	3,558.7	3,498.7	3,490.6	12.7	8.5	-178.74	-22.9	324.8	844.1	827.9	16.27	51.886		
3,700.0	3,657.4	3,595.8	3,587.4	13.1	8.8	-178.74	-23.6	332.5	868.2	851.5	16.74	51.867		
3,800.0	3,756.0	3,692.8	3,684.1	13.5	9.0	-178.73	-24.3	340.2	892.3	875.1	17.21	51.848		
3,900.0	3,854.7	3,794.0	3,785.0	13.9	9.3	-178.73	-25.1	348.2	916.4	898.7	17.69	51.811		
4,000.0	3,953.3	3,938.4	3,929.2	14.3	9.6	-178.73	-25.8	355.4	937.6	919.4	18.20	51.523		
4,100.0	4,052.0	4,060.2	4,051.0	14.7	9.8	-178.76	-25.8	356.2	954.4	935.8	18.68	51.103		
4,200.0	4,150.7	4,158.9	4,149.7	15.1	10.0	-178.78	-25.8	356.2	970.7	951.6	19.12	50.758		
4,300.0	4,249.3	4,257.5	4,248.3	15.5	10.2	-178.80	-25.8	356.2	987.0	967.5	19.58	50.421 SF		

Company:	Synergy Resources	Local Co-ordinate Reference:	Well SRC Gies 34-15-22CHZ
Project:	SEC.15-T7N-R65W	TVD Reference:	WELL @ 4852.0ft (RKB - 13')
Reference Site:	SRC Gies Pad Sec.15-T7N-R65W	MD Reference:	WELL @ 4852.0ft (RKB - 13')
Site Error:	0.0ft	North Reference:	True
Reference Well:	SRC Gies 34-15-22CHZ	Survey Calculation Method:	Minimum Curvature
Well Error:	0.0ft	Output errors are at	2.00 sigma
Reference Wellbore	Wellbore #1	Database:	landmark
Reference Design:	Plan #1 (5-6-14)	Offset TVD Reference:	Offset Datum

Offset Design													Offset Site Error:	0.0 ft
Survey Program: 0-MWD													Offset Well Error:	0.0 ft
Reference		Offset		Semi Major Axis			Distance							Warning
Measured Depth (ft)	Vertical Depth (ft)	Measured Depth (ft)	Vertical Depth (ft)	Reference (ft)	Offset (ft)	Highside Toolface (°)	Offset Wellbore Centre +N/-S (ft)	+E/-W (ft)	Between Centres (ft)	Between Ellipses (ft)	Minimum Separation (ft)	Separation Factor		
0.0	0.0	0.0	0.0	0.0	0.0	91.64	-4.0	139.7	139.8					
100.0	100.0	99.0	99.0	0.1	0.1	91.64	-4.0	139.7	139.8	139.6	0.22	625.129		
200.0	200.0	199.0	199.0	0.3	0.3	91.64	-4.0	139.7	139.8	139.1	0.67	208.030 CC, ES		
300.0	300.0	299.0	299.0	0.6	0.6	-179.24	-4.0	139.7	141.6	140.4	1.12	126.623		
400.0	399.8	398.8	398.8	0.8	0.8	-179.26	-4.0	139.7	146.8	145.2	1.57	93.710		
500.0	499.5	498.5	498.5	1.0	1.0	-179.30	-4.0	139.7	155.5	153.5	2.02	76.954		
600.0	598.7	597.7	597.7	1.3	1.2	-179.35	-4.0	139.7	167.7	165.2	2.48	67.665		
700.0	697.5	690.7	690.7	1.7	1.4	-179.38	-4.1	141.2	184.7	181.8	2.92	63.288		
800.0	796.2	782.2	782.1	2.0	1.6	-179.38	-4.4	145.5	205.7	202.3	3.35	61.309		
900.0	894.8	872.4	872.0	2.4	1.8	-179.34	-4.9	152.7	229.7	225.9	3.79	60.545		
1,000.0	993.5	966.2	965.3	2.7	2.0	-179.29	-5.5	162.4	256.2	252.0	4.24	60.417		
1,100.0	1,092.1	1,062.6	1,061.1	3.1	2.3	-179.25	-6.2	172.6	282.9	278.2	4.69	60.360		
1,200.0	1,190.8	1,159.0	1,156.9	3.5	2.6	-179.22	-6.9	182.9	309.6	304.4	5.13	60.298		
1,300.0	1,289.5	1,255.3	1,252.8	3.9	2.8	-179.19	-7.5	193.1	336.3	330.7	5.59	60.200		
1,400.0	1,388.1	1,351.7	1,348.6	4.3	3.1	-179.16	-8.2	203.3	362.9	356.9	6.04	60.083		
1,500.0	1,486.8	1,448.1	1,444.4	4.6	3.4	-179.14	-8.9	213.5	389.6	383.1	6.50	59.962		
1,600.0	1,585.5	1,544.5	1,540.3	5.0	3.6	-179.12	-9.5	223.7	416.3	409.4	6.96	59.812		
1,700.0	1,684.1	1,640.8	1,636.1	5.4	3.9	-179.10	-10.2	233.9	443.0	435.6	7.42	59.697		
1,800.0	1,782.8	1,737.2	1,731.9	5.8	4.2	-179.09	-10.9	244.1	469.7	461.8	7.88	59.574		
1,900.0	1,881.4	1,833.6	1,827.7	6.2	4.5	-179.08	-11.6	254.4	496.4	488.0	8.35	59.456		
2,000.0	1,980.1	1,929.9	1,923.6	6.6	4.8	-179.06	-12.2	264.6	523.0	514.2	8.81	59.342		
2,100.0	2,078.8	2,026.3	2,019.4	7.0	5.0	-179.05	-12.9	274.8	549.7	540.4	9.28	59.234		
2,200.0	2,177.4	2,122.7	2,115.2	7.3	5.3	-179.04	-13.6	285.0	576.4	566.7	9.75	59.132		
2,300.0	2,276.1	2,219.1	2,211.1	7.7	5.6	-179.03	-14.3	295.2	603.1	592.9	10.22	59.035		
2,400.0	2,374.7	2,315.4	2,306.9	8.1	5.9	-179.03	-14.9	305.4	629.8	619.1	10.68	58.943		
2,500.0	2,473.4	2,411.8	2,402.7	8.5	6.2	-179.02	-15.6	315.6	656.5	645.3	11.15	58.856		
2,600.0	2,572.1	2,508.2	2,498.5	8.9	6.5	-179.01	-16.3	325.9	683.1	671.5	11.62	58.773		
2,700.0	2,670.7	2,604.6	2,594.4	9.3	6.7	-179.01	-17.0	336.1	709.8	697.7	12.09	58.695		
2,800.0	2,769.4	2,700.9	2,690.2	9.7	7.0	-179.00	-17.6	346.3	736.5	723.9	12.56	58.621		
2,900.0	2,868.1	2,797.3	2,786.0	10.0	7.3	-178.99	-18.3	356.5	763.2	750.2	13.03	58.551		
3,000.0	2,966.7	2,893.7	2,881.9	10.4	7.6	-178.99	-19.0	366.7	789.9	776.4	13.51	58.484		
3,100.0	3,065.4	2,990.1	2,977.7	10.8	7.9	-178.98	-19.7	376.9	816.6	802.6	13.98	58.421		
3,200.0	3,164.0	3,086.4	3,073.5	11.2	8.2	-178.98	-20.3	387.2	843.2	828.8	14.45	58.360		
3,300.0	3,262.7	3,182.8	3,169.4	11.6	8.5	-178.98	-21.0	397.4	869.9	855.0	14.92	58.302		
3,400.0	3,361.4	3,279.2	3,265.2	12.0	8.8	-178.97	-21.7	407.6	896.6	881.2	15.39	58.248		
3,500.0	3,460.0	3,375.6	3,361.0	12.4	9.0	-178.97	-22.4	417.8	923.3	907.4	15.87	58.195		
3,600.0	3,558.7	3,471.9	3,456.8	12.7	9.3	-178.97	-23.0	428.0	950.0	933.6	16.34	58.145		
3,700.0	3,657.4	3,568.3	3,552.7	13.1	9.6	-178.96	-23.7	438.2	976.7	959.8	16.81	58.097 SF		

Company:	Synergy Resources	Local Co-ordinate Reference:	Well SRC Gies 34-15-22CHZ
Project:	SEC.15-T7N-R65W	TVD Reference:	WELL @ 4852.0ft (RKB - 13')
Reference Site:	SRC Gies Pad Sec.15-T7N-R65W	MD Reference:	WELL @ 4852.0ft (RKB - 13')
Site Error:	0.0ft	North Reference:	True
Reference Well:	SRC Gies 34-15-22CHZ	Survey Calculation Method:	Minimum Curvature
Well Error:	0.0ft	Output errors are at	2.00 sigma
Reference Wellbore	Wellbore #1	Database:	landmark
Reference Design:	Plan #1 (5-6-14)	Offset TVD Reference:	Offset Datum

Offset Design SRC Gies Pad Sec.15-T7N-R65W - SRC Gies D-15-22CHZ - Wellbore #1 - Plan #1 (5-7-14)													Offset Site Error:	0.0ft
Survey Program: 0-MWD													Offset Well Error:	0.0ft
Reference		Offset		Semi Major Axis			Distance							Warning
Measured Depth (ft)	Vertical Depth (ft)	Measured Depth (ft)	Vertical Depth (ft)	Reference (ft)	Offset (ft)	Highside Toolface (°)	Offset Wellbore Centre +N/-S (ft)	+E/-W (ft)	Between Centres (ft)	Between Ellipses (ft)	Minimum Separation (ft)	Separation Factor		
0.0	0.0	0.0	0.0	0.0	0.0	91.82	-2.5	80.0	80.1					
100.0	100.0	99.0	99.0	0.1	0.1	91.82	-2.5	80.0	80.1	79.8	0.22	357.961		
200.0	200.0	199.0	199.0	0.3	0.3	91.82	-2.5	80.0	80.1	79.4	0.67	119.122 CC, ES		
300.0	300.0	299.0	299.0	0.6	0.6	-179.07	-2.5	80.0	81.8	80.7	1.12	73.174		
400.0	399.8	398.8	398.8	0.8	0.8	-179.12	-2.5	80.0	87.0	85.5	1.57	55.564		
500.0	499.5	498.5	498.5	1.0	1.0	-179.20	-2.5	80.0	95.7	93.7	2.02	47.384		
600.0	598.7	597.7	597.7	1.3	1.2	-179.29	-2.5	80.0	107.9	105.5	2.48	43.553		
700.0	697.5	696.5	696.5	1.7	1.5	-179.37	-2.5	80.0	123.4	120.5	2.93	42.054		
800.0	796.2	795.2	795.2	2.0	1.7	-179.45	-2.5	80.0	139.7	136.3	3.39	41.230		
900.0	894.8	893.8	893.8	2.4	1.9	-179.50	-2.5	80.0	156.0	152.2	3.85	40.554		
1,000.0	993.5	992.5	992.5	2.7	2.1	-179.55	-2.5	80.0	172.3	168.0	4.31	39.995		
1,100.0	1,092.1	1,091.1	1,091.1	3.1	2.3	-179.59	-2.5	80.0	188.6	183.8	4.77	39.527		
1,200.0	1,190.8	1,189.8	1,189.8	3.5	2.6	-179.62	-2.5	80.0	204.9	199.7	5.24	39.130		
1,300.0	1,289.5	1,288.5	1,288.5	3.9	2.8	-179.65	-2.5	80.0	221.2	215.5	5.70	38.790		
1,400.0	1,388.1	1,387.1	1,387.1	4.3	3.0	-179.67	-2.5	80.0	237.5	231.4	6.17	38.496		
1,500.0	1,486.8	1,494.1	1,494.1	4.6	3.2	-179.67	-2.6	78.5	252.4	245.8	6.64	38.021		
1,600.0	1,585.5	1,602.5	1,602.3	5.0	3.5	-179.59	-3.0	72.9	263.6	256.5	7.09	37.163		
1,700.0	1,684.1	1,702.0	1,701.6	5.4	3.7	-179.50	-3.4	66.1	273.2	265.7	7.54	36.215		
1,800.0	1,782.8	1,801.6	1,800.9	5.8	3.9	-179.41	-3.8	59.4	282.8	274.8	8.00	35.357		
1,900.0	1,881.4	1,901.1	1,900.2	6.2	4.1	-179.33	-4.2	52.6	292.4	283.9	8.45	34.580		
2,000.0	1,980.1	2,000.6	1,999.6	6.6	4.3	-179.26	-4.6	45.9	301.9	293.0	8.91	33.872		
2,100.0	2,078.8	2,100.2	2,098.9	7.0	4.6	-179.19	-5.0	39.1	311.5	302.1	9.38	33.226		
2,200.0	2,177.4	2,199.7	2,198.2	7.3	4.8	-179.12	-5.4	32.4	321.1	311.3	9.84	32.634		
2,300.0	2,276.1	2,299.3	2,297.5	7.7	5.0	-179.06	-5.8	25.6	330.7	320.4	10.31	32.090		
2,400.0	2,374.7	2,398.8	2,396.8	8.1	5.3	-179.00	-6.2	18.8	340.3	329.5	10.77	31.588		
2,500.0	2,473.4	2,498.3	2,496.1	8.5	5.5	-178.94	-6.6	12.1	349.9	338.6	11.24	31.125		
2,600.0	2,572.1	2,597.9	2,595.4	8.9	5.7	-178.89	-7.0	5.3	359.4	347.7	11.71	30.696		
2,700.0	2,670.7	2,697.4	2,694.7	9.3	6.0	-178.84	-7.4	-1.4	369.0	356.8	12.18	30.297		
2,800.0	2,769.4	2,797.0	2,794.0	9.7	6.2	-178.79	-7.8	-8.2	378.6	366.0	12.65	29.926		
2,900.0	2,868.1	2,896.5	2,893.3	10.0	6.5	-178.75	-8.2	-14.9	388.2	375.1	13.12	29.579		
3,000.0	2,966.7	2,996.0	2,992.6	10.4	6.7	-178.70	-8.6	-21.7	397.8	384.2	13.60	29.255		
3,100.0	3,065.4	3,095.6	3,091.9	10.8	7.0	-178.66	-9.0	-28.4	407.4	393.3	14.07	28.952		
3,200.0	3,164.0	3,195.1	3,191.3	11.2	7.2	-178.62	-9.4	-35.2	416.9	402.4	14.54	28.667		
3,300.0	3,262.7	3,294.6	3,290.6	11.6	7.5	-178.58	-9.9	-42.0	426.5	411.5	15.02	28.399		
3,400.0	3,361.4	3,394.2	3,389.9	12.0	7.7	-178.55	-10.3	-48.7	436.1	420.6	15.49	28.146		
3,500.0	3,460.0	3,493.7	3,489.2	12.4	8.0	-178.51	-10.7	-55.5	445.7	429.7	15.97	27.908		
3,600.0	3,558.7	3,593.3	3,588.5	12.7	8.2	-178.48	-11.1	-62.2	455.3	438.8	16.45	27.683		
3,700.0	3,657.4	3,692.8	3,687.8	13.1	8.5	-178.45	-11.5	-69.0	464.9	448.0	16.92	27.470		
3,800.0	3,756.0	3,792.3	3,787.1	13.5	8.7	-178.42	-11.9	-75.7	474.5	457.1	17.40	27.268		
3,900.0	3,854.7	3,880.2	3,874.8	13.9	8.9	-178.40	-12.2	-80.9	485.0	467.2	17.84	27.192		
4,000.0	3,953.3	3,964.8	3,959.4	14.3	9.1	-178.42	-12.3	-83.3	498.5	480.2	18.25	27.309		
4,100.0	4,052.0	4,056.4	4,051.0	14.7	9.2	-178.46	-12.3	-83.6	514.4	495.8	18.69	27.532		
4,200.0	4,150.7	4,155.1	4,149.7	15.1	9.4	-178.51	-12.3	-83.6	530.7	511.6	19.14	27.730		
4,300.0	4,249.3	4,253.8	4,248.3	15.5	9.6	-178.55	-12.3	-83.6	547.0	527.4	19.60	27.914		
4,400.0	4,348.0	4,352.4	4,347.0	15.8	9.8	-178.60	-12.3	-83.6	563.3	543.3	20.06	28.088		
4,500.0	4,446.7	4,451.1	4,445.7	16.2	10.0	-178.64	-12.3	-83.6	579.6	559.1	20.52	28.254		
4,600.0	4,545.3	4,549.7	4,544.3	16.6	10.2	-178.67	-12.3	-83.6	595.9	575.0	20.98	28.411		
4,700.0	4,644.0	4,648.4	4,643.0	17.0	10.4	-178.71	-12.3	-83.6	612.2	590.8	21.44	28.562		
4,800.0	4,742.6	4,747.1	4,741.6	17.4	10.6	-178.74	-12.3	-83.6	628.5	606.6	21.90	28.705		
4,900.0	4,841.3	4,845.7	4,840.3	17.8	10.8	-178.77	-12.3	-83.6	644.8	622.5	22.36	28.841		
5,000.0	4,940.0	4,944.4	4,939.0	18.2	11.1	-178.80	-12.3	-83.6	661.1	638.3	22.82	28.971		
5,100.0	5,038.6	5,043.1	5,037.6	18.5	11.3	-178.83	-12.3	-83.6	677.4	654.1	23.28	29.096		

CC - Min centre to center distance or convergent point, SF - min separation factor, ES - min ellipse separation

Company:	Synergy Resources	Local Co-ordinate Reference:	Well SRC Gies 34-15-22CHZ
Project:	SEC.15-T7N-R65W	TVD Reference:	WELL @ 4852.0ft (RKB - 13')
Reference Site:	SRC Gies Pad Sec.15-T7N-R65W	MD Reference:	WELL @ 4852.0ft (RKB - 13')
Site Error:	0.0ft	North Reference:	True
Reference Well:	SRC Gies 34-15-22CHZ	Survey Calculation Method:	Minimum Curvature
Well Error:	0.0ft	Output errors are at	2.00 sigma
Reference Wellbore	Wellbore #1	Database:	landmark
Reference Design:	Plan #1 (5-6-14)	Offset TVD Reference:	Offset Datum

Offset Design												Offset Site Error:	0.0 ft
Survey Program: 0-MWD												Offset Well Error:	0.0 ft
Reference		Offset		Semi Major Axis			Distance						
Measured Depth (ft)	Vertical Depth (ft)	Measured Depth (ft)	Vertical Depth (ft)	Reference (ft)	Offset (ft)	Highside Toolface (°)	Offset Wellbore Centre +N/-S (ft)	+E/-W (ft)	Between Centres (ft)	Between Ellipses (ft)	Minimum Separation (ft)	Separation Factor	Warning
5,200.0	5,137.3	5,141.7	5,136.3	18.9	11.5	-178.86	-12.3	-83.6	693.7	670.0	23.75	29.215	
5,300.0	5,236.0	5,240.4	5,235.0	19.3	11.7	-178.89	-12.3	-83.6	710.0	685.8	24.21	29.330	
5,400.0	5,334.6	5,339.0	5,333.6	19.7	11.9	-178.91	-12.3	-83.6	726.3	701.7	24.67	29.439	
5,500.0	5,433.3	5,437.7	5,432.3	20.1	12.1	-178.94	-12.3	-83.6	742.6	717.5	25.14	29.544	
5,600.0	5,531.9	5,536.4	5,530.9	20.5	12.3	-178.96	-12.3	-83.6	758.9	733.3	25.60	29.645	
5,700.0	5,630.6	5,635.0	5,629.6	20.9	12.5	-178.98	-12.3	-83.6	775.2	749.2	26.07	29.742	
5,800.0	5,729.3	5,733.7	5,728.3	21.3	12.7	-179.00	-12.3	-83.6	791.5	765.0	26.53	29.835	
5,900.0	5,827.9	5,832.4	5,826.9	21.6	12.9	-179.02	-12.3	-83.6	807.8	780.8	27.00	29.924	
6,000.0	5,926.6	5,931.0	5,925.6	22.0	13.1	-179.04	-12.3	-83.6	824.1	796.7	27.46	30.010	
6,100.0	6,025.2	6,029.7	6,024.2	22.4	13.3	-179.06	-12.3	-83.6	840.4	812.5	27.93	30.093	
6,200.0	6,124.1	6,128.6	6,123.1	22.7	13.6	-179.08	-12.3	-83.6	855.3	826.9	28.40	30.113	
6,300.0	6,223.5	6,227.9	6,222.5	23.0	13.8	-179.10	-12.3	-83.6	866.7	837.8	28.82	30.073	
6,400.0	6,323.2	6,327.6	6,322.2	23.2	14.0	-179.11	-12.3	-83.6	874.6	845.4	29.20	29.954	
6,500.0	6,423.1	6,427.5	6,422.1	23.3	14.2	-179.11	-12.3	-83.6	879.0	849.5	29.54	29.757	
6,600.0	6,523.1	6,527.5	6,522.1	23.4	14.4	91.75	-12.3	-83.6	880.0	850.1	29.88	29.452	
6,700.0	6,623.1	6,627.5	6,622.1	23.6	14.6	91.75	-12.3	-83.6	880.0	849.7	30.28	29.065	
6,800.0	6,723.1	6,727.5	6,722.1	23.7	14.8	91.75	-12.3	-83.6	880.0	849.4	30.68	28.686	
6,900.0	6,823.0	6,826.3	6,820.9	23.8	15.1	-88.03	-12.9	-83.6	880.0	849.0	31.06	28.330	
7,000.0	6,922.3	6,922.3	6,916.3	23.9	15.2	-88.07	-22.9	-83.5	880.0	848.6	31.41	28.017	
7,100.0	7,019.2	7,018.4	7,009.6	24.1	15.4	-88.14	-45.6	-83.5	880.0	848.2	31.77	27.702	
7,200.0	7,111.6	7,114.7	7,099.1	24.2	15.6	-88.25	-80.7	-83.3	879.9	847.8	32.17	27.354	
7,300.0	7,197.8	7,211.2	7,183.4	24.4	15.9	-88.40	-127.6	-83.1	879.9	847.2	32.66	26.938	
7,400.0	7,276.2	7,308.0	7,260.8	24.6	16.1	-88.57	-185.6	-82.9	879.8	846.5	33.31	26.412	
7,500.0	7,345.2	7,405.1	7,330.0	24.8	16.5	-88.77	-253.7	-82.7	879.7	845.5	34.17	25.744	
7,600.0	7,403.4	7,502.7	7,389.5	25.1	17.1	-88.99	-330.9	-82.4	879.7	844.4	35.30	24.920	
7,700.0	7,449.8	7,600.8	7,438.2	25.6	17.8	-89.23	-416.0	-82.0	879.6	842.9	36.73	23.949	
7,800.0	7,483.4	7,699.3	7,475.0	26.1	18.7	-89.49	-507.3	-81.7	879.6	841.1	38.47	22.863	
7,900.0	7,503.6	7,798.5	7,499.0	26.8	19.7	-89.76	-603.4	-81.3	879.5	839.0	40.51	21.710	
7,975.5	7,509.9	7,873.7	7,508.2	27.3	20.6	-89.96	-678.1	-81.0	879.5	837.3	42.24	20.822	
8,000.0	7,510.0	7,898.2	7,509.5	27.6	20.8	-90.03	-702.5	-81.0	879.5	836.7	42.81	20.544	
8,100.0	7,510.0	7,998.2	7,510.0	28.5	22.1	-90.07	-802.5	-80.6	879.5	834.2	45.31	19.414	
8,200.0	7,510.0	8,098.2	7,510.0	29.5	23.5	-90.07	-902.5	-80.2	879.5	831.6	47.98	18.333	
8,300.0	7,510.0	8,198.2	7,510.0	30.6	24.9	-90.07	-1,002.5	-79.8	879.5	828.7	50.80	17.315	
8,400.0	7,510.0	8,298.2	7,510.0	31.8	26.4	-90.07	-1,102.5	-79.4	879.5	825.8	53.75	16.365	
8,500.0	7,510.0	8,398.2	7,510.0	33.1	27.9	-90.07	-1,202.5	-79.1	879.5	822.7	56.80	15.484	
8,600.0	7,510.0	8,498.2	7,510.0	34.5	29.5	-90.07	-1,302.5	-78.7	879.5	819.6	59.95	14.671	
8,700.0	7,510.0	8,598.2	7,510.0	35.9	31.1	-90.07	-1,402.5	-78.3	879.5	816.4	63.18	13.922	
8,800.0	7,510.0	8,698.2	7,510.0	37.3	32.8	-90.07	-1,502.5	-77.9	879.6	813.1	66.47	13.232	
8,900.0	7,510.0	8,798.2	7,510.0	38.8	34.5	-90.07	-1,602.5	-77.5	879.6	809.7	69.82	12.597	
9,000.0	7,510.0	8,898.2	7,510.0	40.3	36.2	-90.07	-1,702.5	-77.1	879.6	806.3	73.22	12.013	
9,100.0	7,510.0	8,998.2	7,510.0	41.9	37.9	-90.07	-1,802.5	-76.8	879.6	802.9	76.66	11.473	
9,200.0	7,510.0	9,098.2	7,510.0	43.5	39.7	-90.07	-1,902.5	-76.4	879.6	799.4	80.14	10.975	
9,300.0	7,510.0	9,198.2	7,510.0	45.1	41.4	-90.07	-2,002.5	-76.0	879.6	795.9	83.65	10.515	
9,400.0	7,510.0	9,298.2	7,510.0	46.8	43.2	-90.07	-2,102.5	-75.6	879.6	792.4	87.19	10.088	
9,500.0	7,510.0	9,398.2	7,510.0	48.5	45.0	-90.07	-2,202.5	-75.2	879.6	788.8	90.76	9.692	
9,600.0	7,510.0	9,498.2	7,510.0	50.1	46.8	-90.07	-2,302.5	-74.9	879.6	785.2	94.34	9.323	
9,700.0	7,510.0	9,598.2	7,510.0	51.9	48.6	-90.07	-2,402.5	-74.5	879.6	781.6	97.95	8.980	
9,800.0	7,510.0	9,698.2	7,510.0	53.6	50.4	-90.07	-2,502.5	-74.1	879.6	778.0	101.58	8.659	
9,900.0	7,510.0	9,798.2	7,510.0	55.3	52.2	-90.07	-2,602.5	-73.7	879.6	774.4	105.22	8.360	
10,000.0	7,510.0	9,898.2	7,510.0	57.1	54.1	-90.07	-2,702.5	-73.3	879.6	770.7	108.87	8.079	
10,100.0	7,510.0	9,998.2	7,510.0	58.8	55.9	-90.07	-2,802.5	-73.0	879.6	767.0	112.54	7.816	
10,200.0	7,510.0	10,098.2	7,510.0	60.6	57.8	-90.07	-2,902.5	-72.6	879.6	763.4	116.22	7.568	

CC - Min centre to center distance or convergent point, SF - min separation factor, ES - min ellipse separation

Company:	Synergy Resources	Local Co-ordinate Reference:	Well SRC Gies 34-15-22CHZ
Project:	SEC.15-T7N-R65W	TVD Reference:	WELL @ 4852.0ft (RKB - 13')
Reference Site:	SRC Gies Pad Sec.15-T7N-R65W	MD Reference:	WELL @ 4852.0ft (RKB - 13')
Site Error:	0.0ft	North Reference:	True
Reference Well:	SRC Gies 34-15-22CHZ	Survey Calculation Method:	Minimum Curvature
Well Error:	0.0ft	Output errors are at	2.00 sigma
Reference Wellbore	Wellbore #1	Database:	landmark
Reference Design:	Plan #1 (5-6-14)	Offset TVD Reference:	Offset Datum

Offset Design SRC Gies Pad Sec.15-T7N-R65W - SRC Gies D-15-22CHZ - Wellbore #1 - Plan #1 (5-7-14)												Offset Site Error:	0.0 ft
Survey Program: 0-MWD												Offset Well Error:	0.0 ft
Reference		Offset		Semi Major Axis			Distance						
Measured Depth (ft)	Vertical Depth (ft)	Measured Depth (ft)	Vertical Depth (ft)	Reference (ft)	Offset (ft)	Highside Toolface (°)	Offset Wellbore Centre +N/-S (ft)	+E/-W (ft)	Between Centres (ft)	Between Ellipses (ft)	Minimum Separation (ft)	Separation Factor	Warning
10,300.0	7,510.0	10,198.2	7,510.0	62.4	59.6	-90.07	-3,002.5	-72.2	879.6	759.7	119.91	7.335	
10,400.0	7,510.0	10,298.2	7,510.0	64.1	61.5	-90.07	-3,102.5	-71.8	879.6	756.0	123.61	7.116	
10,500.0	7,510.0	10,398.2	7,510.0	65.9	63.3	-90.07	-3,202.5	-71.4	879.6	752.3	127.32	6.908	
10,600.0	7,510.0	10,498.2	7,510.0	67.7	65.2	-90.07	-3,302.5	-71.1	879.6	748.6	131.04	6.712	
10,700.0	7,510.0	10,598.2	7,510.0	69.6	67.0	-90.07	-3,402.5	-70.7	879.6	744.8	134.77	6.527	
10,800.0	7,510.0	10,698.2	7,510.0	71.4	68.9	-90.07	-3,502.5	-70.3	879.6	741.1	138.50	6.351	
10,900.0	7,510.0	10,798.2	7,510.0	73.2	70.8	-90.07	-3,602.5	-69.9	879.6	737.4	142.24	6.184	
11,000.0	7,510.0	10,898.2	7,510.0	75.0	72.7	-90.07	-3,702.5	-69.5	879.6	733.6	145.98	6.026	
11,100.0	7,510.0	10,998.2	7,510.0	76.8	74.5	-90.07	-3,802.5	-69.1	879.6	729.9	149.73	5.875	
11,200.0	7,510.0	11,098.2	7,510.0	78.7	76.4	-90.07	-3,902.5	-68.8	879.6	726.1	153.48	5.731	
11,300.0	7,510.0	11,198.2	7,510.0	80.5	78.3	-90.07	-4,002.5	-68.4	879.6	722.4	157.24	5.594	
11,400.0	7,510.0	11,298.2	7,510.0	82.4	80.2	-90.07	-4,102.5	-68.0	879.6	718.6	161.01	5.463	
11,500.0	7,510.0	11,398.2	7,510.0	84.2	82.1	-90.07	-4,202.5	-67.6	879.6	714.9	164.77	5.338	
11,600.0	7,510.0	11,498.2	7,510.0	86.1	84.0	-90.07	-4,302.5	-67.2	879.6	711.1	168.54	5.219	
11,700.0	7,510.0	11,598.2	7,510.0	87.9	85.9	-90.07	-4,402.5	-66.9	879.6	707.3	172.32	5.105	
11,800.0	7,510.0	11,698.2	7,510.0	89.8	87.7	-90.07	-4,502.5	-66.5	879.6	703.5	176.10	4.995	
11,809.9	7,510.0	11,708.1	7,510.0	90.0	87.9	-90.07	-4,512.4	-66.4	879.6	703.2	176.47	4.985 SF	

Company:	Synergy Resources	Local Co-ordinate Reference:	Well SRC Gies 34-15-22CHZ
Project:	SEC.15-T7N-R65W	TVD Reference:	WELL @ 4852.0ft (RKB - 13')
Reference Site:	SRC Gies Pad Sec.15-T7N-R65W	MD Reference:	WELL @ 4852.0ft (RKB - 13')
Site Error:	0.0ft	North Reference:	True
Reference Well:	SRC Gies 34-15-22CHZ	Survey Calculation Method:	Minimum Curvature
Well Error:	0.0ft	Output errors are at	2.00 sigma
Reference Wellbore	Wellbore #1	Database:	landmark
Reference Design:	Plan #1 (5-6-14)	Offset TVD Reference:	Offset Datum

Offset Design													Offset Site Error:	0.0 ft
Survey Program: 0-MWD													Offset Well Error:	0.0 ft
Reference		Offset		Semi Major Axis			Distance							Warning
Measured Depth (ft)	Vertical Depth (ft)	Measured Depth (ft)	Vertical Depth (ft)	Reference (ft)	Offset (ft)	Highside Toolface (°)	Offset Wellbore Centre +N/-S (ft)	+E/-W (ft)	Between Centres (ft)	Between Ellipses (ft)	Minimum Separation (ft)	Separation Factor		
0.0	0.0	0.0	0.0	0.0	0.0	91.67	-2.9	99.7	99.8					
100.0	100.0	99.0	99.0	0.1	0.1	91.67	-2.9	99.7	99.8	99.6	0.22	446.172		
200.0	200.0	199.0	199.0	0.3	0.3	91.67	-2.9	99.7	99.8	99.1	0.67	148.477 CC, ES		
300.0	300.0	299.0	299.0	0.6	0.6	-179.21	-2.9	99.7	101.5	100.4	1.12	90.822		
400.0	399.8	398.8	398.8	0.8	0.8	-179.25	-2.9	99.7	106.8	105.2	1.57	68.159		
500.0	499.5	498.5	498.5	1.0	1.0	-179.30	-2.9	99.7	115.5	113.5	2.02	57.147		
600.0	598.7	597.7	597.7	1.3	1.2	-179.37	-2.9	99.7	127.7	125.2	2.48	51.515		
700.0	697.5	696.5	696.5	1.7	1.5	-179.43	-2.9	99.7	143.1	140.2	2.93	48.777		
800.0	796.2	795.2	795.2	2.0	1.7	-179.49	-2.9	99.7	159.4	156.1	3.39	47.053		
900.0	894.8	893.8	893.8	2.4	1.9	-179.54	-2.9	99.7	175.7	171.9	3.85	45.683		
1,000.0	993.5	992.5	992.5	2.7	2.1	-179.58	-2.9	99.7	192.0	187.7	4.31	44.575		
1,100.0	1,092.1	1,088.5	1,088.5	3.1	2.3	-179.51	-3.3	100.6	209.2	204.5	4.74	44.102		
1,200.0	1,190.8	1,187.0	1,187.0	3.5	2.5	-179.41	-3.8	101.8	226.8	221.6	5.18	43.808		
1,300.0	1,289.5	1,285.4	1,285.4	3.9	2.7	-179.33	-4.4	103.0	244.3	238.7	5.61	43.516		
1,400.0	1,388.1	1,383.9	1,383.8	4.3	2.9	-179.26	-4.9	104.3	261.9	255.8	6.06	43.231		
1,500.0	1,486.8	1,482.3	1,482.3	4.6	3.1	-179.19	-5.5	105.5	279.4	272.9	6.50	42.959		
1,600.0	1,585.5	1,580.8	1,580.7	5.0	3.3	-179.14	-6.0	106.7	296.9	290.0	6.95	42.702		
1,700.0	1,684.1	1,679.2	1,679.2	5.4	3.5	-179.09	-6.6	107.9	314.5	307.1	7.41	42.460		
1,800.0	1,782.8	1,777.7	1,777.6	5.8	3.7	-179.04	-7.1	109.2	332.0	324.2	7.86	42.234		
1,900.0	1,881.4	1,876.1	1,876.0	6.2	3.9	-179.00	-7.7	110.4	349.6	341.2	8.32	42.024		
2,000.0	1,980.1	1,974.6	1,974.5	6.6	4.1	-178.97	-8.2	111.6	367.1	358.3	8.78	41.827		
2,100.0	2,078.8	2,073.0	2,072.9	7.0	4.3	-178.94	-8.7	112.8	384.6	375.4	9.24	41.644		
2,200.0	2,177.4	2,171.5	2,171.4	7.3	4.6	-178.91	-9.3	114.1	402.2	392.5	9.70	41.473		
2,300.0	2,276.1	2,269.9	2,269.8	7.7	4.8	-178.88	-9.8	115.3	419.7	409.6	10.16	41.313		
2,400.0	2,374.7	2,368.4	2,368.2	8.1	5.0	-178.85	-10.4	116.5	437.3	426.7	10.62	41.164		
2,500.0	2,473.4	2,466.8	2,466.7	8.5	5.2	-178.83	-10.9	117.7	454.8	443.7	11.09	41.024		
2,600.0	2,572.1	2,565.3	2,565.1	8.9	5.4	-178.81	-11.5	119.0	472.4	460.8	11.55	40.893		
2,700.0	2,670.7	2,663.7	2,663.6	9.3	5.6	-178.79	-12.0	120.2	489.9	477.9	12.02	40.770		
2,800.0	2,769.4	2,762.2	2,762.0	9.7	5.9	-178.77	-12.6	121.4	507.4	495.0	12.48	40.654		
2,900.0	2,868.1	2,860.6	2,860.4	10.0	6.1	-178.75	-13.1	122.6	525.0	512.0	12.95	40.546		
3,000.0	2,966.7	2,959.1	2,958.9	10.4	6.3	-178.74	-13.7	123.8	542.5	529.1	13.41	40.443		
3,100.0	3,065.4	3,057.5	3,057.3	10.8	6.5	-178.72	-14.2	125.1	560.1	546.2	13.88	40.346		
3,200.0	3,164.0	3,156.0	3,155.8	11.2	6.7	-178.71	-14.7	126.3	577.6	563.3	14.35	40.254		
3,300.0	3,262.7	3,254.4	3,254.2	11.6	6.9	-178.69	-15.3	127.5	595.2	580.3	14.82	40.167		
3,400.0	3,361.4	3,352.8	3,352.6	12.0	7.2	-178.68	-15.8	128.7	612.7	597.4	15.29	40.085		
3,500.0	3,460.0	3,451.3	3,451.1	12.4	7.4	-178.67	-16.4	130.0	630.2	614.5	15.75	40.006		
3,600.0	3,558.7	3,549.7	3,549.5	12.7	7.6	-178.66	-16.9	131.2	647.8	631.6	16.22	39.932		
3,700.0	3,657.4	3,648.2	3,648.0	13.1	7.8	-178.65	-17.5	132.4	665.3	648.6	16.69	39.861		
3,800.0	3,756.0	3,746.6	3,746.4	13.5	8.0	-178.64	-18.0	133.6	682.9	665.7	17.16	39.794		
3,900.0	3,854.7	3,845.1	3,844.8	13.9	8.3	-178.63	-18.6	134.9	700.4	682.8	17.63	39.729		
4,000.0	3,953.3	3,943.5	3,943.3	14.3	8.5	-178.62	-19.1	136.1	718.0	699.9	18.10	39.668		
4,100.0	4,052.0	4,051.3	4,051.0	14.7	8.7	-178.64	-19.3	136.5	734.7	716.1	18.57	39.553		
4,200.0	4,150.7	4,149.9	4,149.7	15.1	8.9	-178.67	-19.3	136.5	751.0	731.9	19.02	39.476		
4,300.0	4,249.3	4,248.6	4,248.3	15.5	9.1	-178.70	-19.3	136.5	767.3	747.8	19.47	39.402		
4,400.0	4,348.0	4,347.3	4,347.0	15.8	9.3	-178.72	-19.3	136.5	783.6	763.6	19.92	39.329		
4,500.0	4,446.7	4,445.9	4,445.7	16.2	9.5	-178.75	-19.3	136.5	799.9	779.5	20.37	39.258		
4,600.0	4,545.3	4,544.6	4,544.3	16.6	9.7	-178.77	-19.3	136.5	816.2	795.3	20.83	39.188		
4,700.0	4,644.0	4,643.3	4,643.0	17.0	9.9	-178.80	-19.3	136.5	832.5	811.2	21.28	39.119		
4,800.0	4,742.6	4,741.9	4,741.6	17.4	10.1	-178.82	-19.3	136.5	848.8	827.0	21.73	39.051		
4,900.0	4,841.3	4,840.6	4,840.3	17.8	10.3	-178.84	-19.3	136.5	865.1	842.9	22.19	38.985		
5,000.0	4,940.0	4,939.2	4,939.0	18.2	10.5	-178.86	-19.3	136.5	881.4	858.7	22.65	38.921		
5,100.0	5,038.6	5,037.9	5,037.6	18.5	10.7	-178.88	-19.3	136.5	897.7	874.6	23.10	38.857		

CC - Min centre to center distance or convergent point, SF - min separation factor, ES - min ellipse separation

Company:	Synergy Resources	Local Co-ordinate Reference:	Well SRC Gies 34-15-22CHZ
Project:	SEC.15-T7N-R65W	TVD Reference:	WELL @ 4852.0ft (RKB - 13')
Reference Site:	SRC Gies Pad Sec.15-T7N-R65W	MD Reference:	WELL @ 4852.0ft (RKB - 13')
Site Error:	0.0ft	North Reference:	True
Reference Well:	SRC Gies 34-15-22CHZ	Survey Calculation Method:	Minimum Curvature
Well Error:	0.0ft	Output errors are at	2.00 sigma
Reference Wellbore	Wellbore #1	Database:	landmark
Reference Design:	Plan #1 (5-6-14)	Offset TVD Reference:	Offset Datum

Offset Design SRC Gies Pad Sec.15-T7N-R65W - SRC Gies D-15-22NHZ - Wellbore #1 - Plan #1 (5-7-14)												Offset Site Error:	0.0 ft
Survey Program: 0-MWD												Offset Well Error:	0.0 ft
Reference		Offset		Semi Major Axis			Distance						
Measured Depth (ft)	Vertical Depth (ft)	Measured Depth (ft)	Vertical Depth (ft)	Reference (ft)	Offset (ft)	Highside Toolface (°)	Offset Wellbore Centre +N/-S (ft)	+E/-W (ft)	Between Centres (ft)	Between Ellipses (ft)	Minimum Separation (ft)	Separation Factor	Warning
5,200.0	5,137.3	5,136.6	5,136.3	18.9	10.9	-178.90	-19.3	136.5	914.0	890.4	23.56	38.795	
5,300.0	5,236.0	5,235.2	5,235.0	19.3	11.1	-178.92	-19.3	136.5	930.3	906.2	24.02	38.735	
5,400.0	5,334.6	5,333.9	5,333.6	19.7	11.4	-178.94	-19.3	136.5	946.6	922.1	24.47	38.675	
5,500.0	5,433.3	5,432.5	5,432.3	20.1	11.6	-178.96	-19.3	136.5	962.9	937.9	24.93	38.617	
5,600.0	5,531.9	5,531.2	5,530.9	20.5	11.8	-178.98	-19.3	136.5	979.2	953.8	25.39	38.560	
5,700.0	5,630.6	5,629.9	5,629.6	20.9	12.0	-178.99	-19.3	136.5	995.5	969.6	25.85	38.505 SF	

Company:	Synergy Resources	Local Co-ordinate Reference:	Well SRC Gies 34-15-22CHZ
Project:	SEC.15-T7N-R65W	TVD Reference:	WELL @ 4852.0ft (RKB - 13')
Reference Site:	SRC Gies Pad Sec.15-T7N-R65W	MD Reference:	WELL @ 4852.0ft (RKB - 13')
Site Error:	0.0ft	North Reference:	True
Reference Well:	SRC Gies 34-15-22CHZ	Survey Calculation Method:	Minimum Curvature
Well Error:	0.0ft	Output errors are at	2.00 sigma
Reference Wellbore	Wellbore #1	Database:	landmark
Reference Design:	Plan #1 (5-6-14)	Offset TVD Reference:	Offset Datum

Offset Design													Offset Site Error:	0.0 ft
Survey Program: 0-MWD													Offset Well Error:	0.0 ft
Reference		Offset		Semi Major Axis			Distance							Warning
Measured Depth (ft)	Vertical Depth (ft)	Measured Depth (ft)	Vertical Depth (ft)	Reference (ft)	Offset (ft)	Highside Toolface (°)	Offset Wellbore Centre +N/-S (ft)	+E/-W (ft)	Between Centres (ft)	Between Ellipses (ft)	Minimum Separation (ft)	Separation Factor		
0.0	0.0	0.0	0.0	0.0	0.0	91.56	-1.1	40.0	40.0					
100.0	100.0	99.0	99.0	0.1	0.1	91.56	-1.1	40.0	40.0	39.8	0.22	178.956		
200.0	200.0	199.0	199.0	0.3	0.3	91.56	-1.1	40.0	40.0	39.4	0.67	59.553 CC, ES		
300.0	300.0	299.0	299.0	0.6	0.6	-179.34	-1.1	40.0	41.8	40.6	1.12	37.363		
400.0	399.8	398.8	398.8	0.8	0.8	-179.41	-1.1	40.0	47.0	45.4	1.57	30.006		
500.0	499.5	498.5	498.5	1.0	1.0	-179.50	-1.1	40.0	55.7	53.7	2.02	27.573		
600.0	598.7	597.7	597.7	1.3	1.2	-179.59	-1.1	40.0	67.9	65.4	2.48	27.400		
700.0	697.5	699.3	699.3	1.7	1.4	-179.65	-1.1	38.3	81.7	78.8	2.92	27.989		
800.0	796.2	801.9	801.7	2.0	1.7	-179.65	-1.1	32.9	92.8	89.5	3.35	27.700		
900.0	894.8	905.1	904.5	2.4	1.9	-179.62	-1.0	23.8	100.3	96.5	3.80	26.402		
1,000.0	993.5	1,005.3	1,004.1	2.7	2.2	-179.57	-1.0	12.8	105.7	101.4	4.26	24.813		
1,100.0	1,092.1	1,105.2	1,103.4	3.1	2.4	-179.53	-0.9	1.8	111.0	106.3	4.73	23.490		
1,200.0	1,190.8	1,205.0	1,202.6	3.5	2.7	-179.49	-0.9	-9.2	116.4	111.2	5.20	22.386		
1,300.0	1,289.5	1,304.9	1,301.9	3.9	3.0	-179.45	-0.9	-20.2	121.7	116.0	5.67	21.454		
1,400.0	1,388.1	1,404.7	1,401.1	4.3	3.3	-179.42	-0.8	-31.2	127.0	120.9	6.15	20.656		
1,500.0	1,486.8	1,504.6	1,500.4	4.6	3.6	-179.39	-0.8	-42.2	132.4	125.7	6.63	19.969		
1,600.0	1,585.5	1,604.4	1,599.6	5.0	3.8	-179.36	-0.7	-53.2	137.7	130.6	7.11	19.369		
1,700.0	1,684.1	1,704.3	1,698.9	5.4	4.1	-179.34	-0.7	-64.2	143.0	135.5	7.59	18.842		
1,800.0	1,782.8	1,804.2	1,798.1	5.8	4.4	-179.31	-0.6	-75.2	148.4	140.3	8.07	18.376		
1,900.0	1,881.4	1,904.0	1,897.4	6.2	4.7	-179.29	-0.6	-86.2	153.7	145.2	8.56	17.960		
2,000.0	1,980.1	2,003.9	1,996.6	6.6	5.0	-179.27	-0.6	-97.2	159.1	150.0	9.04	17.587		
2,100.0	2,078.8	2,103.7	2,095.9	7.0	5.3	-179.25	-0.5	-108.2	164.4	154.9	9.53	17.251		
2,200.0	2,177.4	2,203.6	2,195.1	7.3	5.6	-179.23	-0.5	-119.2	169.7	159.7	10.02	16.947		
2,300.0	2,276.1	2,303.5	2,294.4	7.7	5.9	-179.21	-0.4	-130.2	175.1	164.6	10.50	16.670		
2,400.0	2,374.7	2,403.3	2,393.6	8.1	6.2	-179.20	-0.4	-141.2	180.4	169.4	10.99	16.418		
2,500.0	2,473.4	2,503.2	2,492.9	8.5	6.5	-179.18	-0.3	-152.2	185.7	174.3	11.48	16.186		
2,600.0	2,572.1	2,603.0	2,592.1	8.9	6.8	-179.17	-0.3	-163.2	191.1	179.1	11.96	15.972		
2,700.0	2,670.7	2,702.9	2,691.4	9.3	7.2	-179.15	-0.3	-174.2	196.4	184.0	12.45	15.775		
2,800.0	2,769.4	2,802.7	2,790.6	9.7	7.5	-179.14	-0.2	-185.2	201.8	188.8	12.94	15.593		
2,900.0	2,868.1	2,902.6	2,889.9	10.0	7.8	-179.13	-0.2	-196.2	207.1	193.7	13.43	15.423		
3,000.0	2,966.7	3,002.5	2,989.1	10.4	8.1	-179.12	-0.1	-207.2	212.4	198.5	13.92	15.265		
3,100.0	3,065.4	3,102.3	3,088.4	10.8	8.4	-179.11	-0.1	-218.2	217.8	203.4	14.40	15.118		
3,200.0	3,164.0	3,202.2	3,187.6	11.2	8.7	-179.10	0.0	-229.2	223.1	208.2	14.89	14.980		
3,300.0	3,262.7	3,302.0	3,286.9	11.6	9.0	-179.09	0.0	-240.2	228.4	213.1	15.38	14.851		
3,400.0	3,361.4	3,401.9	3,386.1	12.0	9.3	-179.08	0.0	-251.2	233.8	217.9	15.87	14.730		
3,500.0	3,460.0	3,501.7	3,485.4	12.4	9.6	-179.07	0.1	-262.2	239.1	222.8	16.36	14.615		
3,600.0	3,558.7	3,601.6	3,584.6	12.7	9.9	-179.06	0.1	-273.2	244.5	227.6	16.85	14.508		
3,700.0	3,657.4	3,701.5	3,683.9	13.1	10.2	-179.05	0.2	-284.2	249.8	232.5	17.34	14.406		
3,800.0	3,756.0	3,801.3	3,783.1	13.5	10.5	-179.04	0.2	-295.2	255.1	237.3	17.83	14.310		
3,900.0	3,854.7	3,901.2	3,882.4	13.9	10.8	-179.04	0.3	-306.2	260.5	242.1	18.32	14.219		
4,000.0	3,953.3	4,001.0	3,981.6	14.3	11.1	-179.03	0.3	-317.2	265.8	247.0	18.81	14.132		
4,100.0	4,052.0	4,100.9	4,080.9	14.7	11.4	-179.02	0.3	-328.2	271.1	251.8	19.30	14.050		
4,200.0	4,150.7	4,200.7	4,180.1	15.1	11.7	-179.01	0.4	-339.2	276.5	256.7	19.79	13.972		
4,300.0	4,249.3	4,300.6	4,279.4	15.5	12.0	-179.01	0.4	-350.2	281.8	261.5	20.28	13.898		
4,400.0	4,348.0	4,400.5	4,378.6	15.8	12.3	-179.00	0.5	-361.2	287.2	266.4	20.77	13.827		
4,500.0	4,446.7	4,500.3	4,477.9	16.2	12.7	-179.00	0.5	-372.2	292.5	271.2	21.26	13.759		
4,600.0	4,545.3	4,600.2	4,577.1	16.6	13.0	-178.99	0.6	-383.2	297.8	276.1	21.75	13.695		
4,700.0	4,644.0	4,700.0	4,676.4	17.0	13.3	-178.98	0.6	-394.2	303.2	280.9	22.24	13.633		
4,800.0	4,742.6	4,799.9	4,775.6	17.4	13.6	-178.98	0.6	-405.2	308.5	285.8	22.73	13.574		
4,900.0	4,841.3	4,899.7	4,874.9	17.8	13.9	-178.97	0.7	-416.2	313.8	290.6	23.22	13.517		
5,000.0	4,940.0	4,999.6	4,974.1	18.2	14.2	-178.97	0.7	-427.2	319.2	295.5	23.71	13.463		
5,100.0	5,038.6	5,099.5	5,073.4	18.5	14.5	-178.96	0.8	-438.2	324.5	300.3	24.20	13.410		

CC - Min centre to center distance or convergent point, SF - min separation factor, ES - min ellipse separation

Company:	Synergy Resources	Local Co-ordinate Reference:	Well SRC Gies 34-15-22CHZ
Project:	SEC.15-T7N-R65W	TVD Reference:	WELL @ 4852.0ft (RKB - 13')
Reference Site:	SRC Gies Pad Sec.15-T7N-R65W	MD Reference:	WELL @ 4852.0ft (RKB - 13')
Site Error:	0.0ft	North Reference:	True
Reference Well:	SRC Gies 34-15-22CHZ	Survey Calculation Method:	Minimum Curvature
Well Error:	0.0ft	Output errors are at	2.00 sigma
Reference Wellbore	Wellbore #1	Database:	landmark
Reference Design:	Plan #1 (5-6-14)	Offset TVD Reference:	Offset Datum

Offset Design												Offset Site Error:	0.0 ft
Survey Program: 0-MWD												Offset Well Error:	0.0 ft
Reference		Offset		Semi Major Axis			Distance						Warning
Measured Depth (ft)	Vertical Depth (ft)	Measured Depth (ft)	Vertical Depth (ft)	Reference (ft)	Offset (ft)	Highside Toolface (°)	Offset Wellbore Centre +N/-S (ft)	+E/-W (ft)	Between Centres (ft)	Between Ellipses (ft)	Minimum Separation (ft)	Separation Factor	
5,200.0	5,137.3	5,199.3	5,172.6	18.9	14.8	-178.96	0.8	-449.2	329.9	305.2	24.69	13.360	
5,300.0	5,236.0	5,299.2	5,271.9	19.3	15.1	-178.95	0.9	-460.2	335.2	310.0	25.18	13.312	
5,400.0	5,334.6	5,399.0	5,371.1	19.7	15.4	-178.95	0.9	-471.2	340.5	314.9	25.67	13.266	
5,500.0	5,433.3	5,498.9	5,470.4	20.1	15.7	-178.95	1.0	-482.2	345.9	319.7	26.16	13.221	
5,600.0	5,531.9	5,598.7	5,569.6	20.5	16.0	-178.94	1.0	-493.2	351.2	324.5	26.65	13.178	
5,700.0	5,630.6	5,698.6	5,668.9	20.9	16.3	-178.94	1.0	-504.2	356.5	329.4	27.14	13.137	
5,800.0	5,729.3	5,789.0	5,758.8	21.3	16.6	-178.94	1.1	-513.2	363.0	335.4	27.59	13.157	
5,900.0	5,827.9	5,877.2	5,846.8	21.6	16.7	-178.95	1.1	-519.3	372.4	344.4	28.00	13.301	
6,000.0	5,926.6	5,964.9	5,934.4	22.0	16.9	-178.98	1.1	-522.6	385.0	356.6	28.41	13.553	
6,100.0	6,025.2	6,054.7	6,024.2	22.4	17.0	-179.01	1.1	-523.4	400.4	371.6	28.82	13.894	
6,200.0	6,124.1	6,153.6	6,123.1	22.7	17.2	-179.05	1.1	-523.4	415.3	386.0	29.25	14.199	
6,300.0	6,223.5	6,253.0	6,222.5	23.0	17.3	-179.08	1.1	-523.4	426.6	397.0	29.61	14.407	
6,400.0	6,323.2	6,352.6	6,322.2	23.2	17.5	-179.10	1.1	-523.4	434.6	404.6	29.94	14.513	
6,500.0	6,423.1	6,452.5	6,422.1	23.3	17.7	-179.11	1.1	-523.4	439.0	408.7	30.24	14.519	
6,600.0	6,523.1	6,552.5	6,522.1	23.4	17.8	91.76	1.1	-523.4	440.0	409.5	30.53	14.410	
6,700.0	6,623.1	6,652.5	6,622.1	23.6	18.0	91.76	1.1	-523.4	440.0	409.1	30.91	14.235	
6,800.0	6,723.1	6,752.5	6,722.1	23.7	18.2	91.76	1.1	-523.4	440.0	408.7	31.29	14.063	
6,900.0	6,823.0	6,851.9	6,821.5	23.8	18.3	-88.03	0.6	-523.4	440.0	408.4	31.66	13.900	
7,000.0	6,922.3	6,950.0	6,918.9	23.9	18.5	-88.08	-9.9	-523.4	440.0	408.0	32.00	13.749	
7,100.0	7,019.2	7,047.9	7,013.8	24.1	18.7	-88.16	-33.5	-523.3	440.0	407.6	32.36	13.595	
7,200.0	7,111.6	7,146.0	7,104.9	24.2	18.8	-88.28	-70.0	-523.1	440.0	407.2	32.77	13.424	
7,300.0	7,197.8	7,244.3	7,190.2	24.4	19.1	-88.44	-118.6	-522.9	439.9	406.6	33.28	13.221	
7,400.0	7,276.2	7,342.7	7,268.2	24.6	19.3	-88.62	-178.5	-522.7	439.9	406.0	33.93	12.964	
7,500.0	7,345.2	7,441.4	7,337.3	24.8	19.6	-88.83	-248.7	-522.4	439.8	405.0	34.80	12.639	
7,600.0	7,403.4	7,540.2	7,396.3	25.1	20.1	-89.06	-327.9	-522.1	439.8	403.9	35.93	12.240	
7,700.0	7,449.8	7,639.4	7,444.0	25.6	20.6	-89.31	-414.7	-521.8	439.8	402.4	37.37	11.769	
7,800.0	7,483.4	7,738.7	7,479.3	26.1	21.4	-89.57	-507.6	-521.5	439.8	400.7	39.11	11.244	
7,900.0	7,503.6	7,838.4	7,501.4	26.8	22.2	-89.85	-604.6	-521.1	439.8	398.6	41.15	10.686	
7,943.6	7,508.2	7,881.9	7,506.8	27.1	22.7	-89.96	-647.8	-520.9	439.8	397.6	42.14	10.436	
8,000.0	7,510.0	7,938.4	7,509.9	27.6	23.3	-90.12	-704.2	-520.7	439.8	396.3	43.45	10.121	
8,100.0	7,510.0	8,038.4	7,510.0	28.5	24.4	-90.13	-804.2	-520.3	439.8	393.8	45.94	9.573	
8,200.0	7,510.0	8,138.4	7,510.0	29.5	25.7	-90.13	-904.2	-520.0	439.8	391.2	48.60	9.050	
8,300.0	7,510.0	8,238.4	7,510.0	30.6	27.0	-90.13	-1,004.2	-519.6	439.8	388.4	51.40	8.555	
8,400.0	7,510.0	8,338.4	7,510.0	31.8	28.4	-90.13	-1,104.2	-519.2	439.8	385.4	54.34	8.093	
8,500.0	7,510.0	8,438.4	7,510.0	33.1	29.8	-90.13	-1,204.2	-518.8	439.8	382.4	57.38	7.664	
8,600.0	7,510.0	8,538.4	7,510.0	34.5	31.3	-90.13	-1,304.2	-518.4	439.8	379.3	60.52	7.267	
8,700.0	7,510.0	8,638.4	7,510.0	35.9	32.9	-90.13	-1,404.2	-518.1	439.8	376.0	63.73	6.901	
8,800.0	7,510.0	8,738.4	7,510.0	37.3	34.5	-90.13	-1,504.2	-517.7	439.8	372.8	67.01	6.563	
8,900.0	7,510.0	8,838.4	7,510.0	38.8	36.1	-90.13	-1,604.2	-517.3	439.8	369.4	70.35	6.251	
9,000.0	7,510.0	8,938.4	7,510.0	40.3	37.7	-90.13	-1,704.2	-516.9	439.8	366.0	73.74	5.964	
9,100.0	7,510.0	9,038.4	7,510.0	41.9	39.4	-90.13	-1,804.2	-516.5	439.8	362.6	77.17	5.699	
9,200.0	7,510.0	9,138.4	7,510.0	43.5	41.1	-90.13	-1,904.2	-516.2	439.8	359.1	80.64	5.454	
9,300.0	7,510.0	9,238.4	7,510.0	45.1	42.8	-90.13	-2,004.2	-515.8	439.8	355.6	84.14	5.227	
9,400.0	7,510.0	9,338.4	7,510.0	46.8	44.6	-90.13	-2,104.2	-515.4	439.8	352.1	87.68	5.016	
9,500.0	7,510.0	9,438.4	7,510.0	48.5	46.3	-90.13	-2,204.2	-515.0	439.8	348.6	91.23	4.820	
9,600.0	7,510.0	9,538.4	7,510.0	50.1	48.1	-90.13	-2,304.2	-514.6	439.8	345.0	94.81	4.638	
9,700.0	7,510.0	9,638.4	7,510.0	51.9	49.8	-90.13	-2,404.2	-514.3	439.8	341.4	98.41	4.469	
9,800.0	7,510.0	9,738.4	7,510.0	53.6	51.6	-90.13	-2,504.2	-513.9	439.8	337.8	102.03	4.310	
9,900.0	7,510.0	9,838.4	7,510.0	55.3	53.4	-90.13	-2,604.2	-513.5	439.8	334.1	105.67	4.162	
10,000.0	7,510.0	9,938.4	7,510.0	57.1	55.2	-90.13	-2,704.2	-513.1	439.8	330.5	109.32	4.023	
10,100.0	7,510.0	10,038.4	7,510.0	58.8	57.0	-90.13	-2,804.2	-512.7	439.8	326.8	112.98	3.893	
10,200.0	7,510.0	10,138.4	7,510.0	60.6	58.9	-90.13	-2,904.2	-512.4	439.8	323.1	116.66	3.770	

CC - Min centre to center distance or convergent point, SF - min separation factor, ES - min ellipse separation

Company:	Synergy Resources	Local Co-ordinate Reference:	Well SRC Gies 34-15-22CHZ
Project:	SEC.15-T7N-R65W	TVD Reference:	WELL @ 4852.0ft (RKB - 13')
Reference Site:	SRC Gies Pad Sec.15-T7N-R65W	MD Reference:	WELL @ 4852.0ft (RKB - 13')
Site Error:	0.0ft	North Reference:	True
Reference Well:	SRC Gies 34-15-22CHZ	Survey Calculation Method:	Minimum Curvature
Well Error:	0.0ft	Output errors are at	2.00 sigma
Reference Wellbore	Wellbore #1	Database:	landmark
Reference Design:	Plan #1 (5-6-14)	Offset TVD Reference:	Offset Datum

Offset Design SRC Gies Pad Sec.15-T7N-R65W - SRC Gies T-15-22CHZ - Wellbore #1 - Plan #1 (5-7-14)												Offset Site Error:	0.0 ft
Survey Program: 0-MWD												Offset Well Error:	0.0 ft
Reference		Offset		Semi Major Axis			Distance						
Measured Depth (ft)	Vertical Depth (ft)	Measured Depth (ft)	Vertical Depth (ft)	Reference (ft)	Offset (ft)	Highside Toolface (°)	Offset Wellbore Centre +N/-S (ft)	+E/-W (ft)	Between Centres (ft)	Between Ellipses (ft)	Minimum Separation (ft)	Separation Factor	Warning
10,300.0	7,510.0	10,238.4	7,510.0	62.4	60.7	-90.13	-3,004.2	-512.0	439.8	319.5	120.35	3.654	
10,400.0	7,510.0	10,338.4	7,510.0	64.1	62.5	-90.13	-3,104.2	-511.6	439.8	315.8	124.04	3.546	
10,500.0	7,510.0	10,438.4	7,510.0	65.9	64.4	-90.13	-3,204.2	-511.2	439.8	312.1	127.75	3.443	
10,600.0	7,510.0	10,538.4	7,510.0	67.7	66.2	-90.13	-3,304.2	-510.9	439.8	308.3	131.46	3.345	
10,700.0	7,510.0	10,638.4	7,510.0	69.6	68.0	-90.13	-3,404.2	-510.5	439.8	304.6	135.18	3.253	
10,800.0	7,510.0	10,738.4	7,510.0	71.4	69.9	-90.13	-3,504.2	-510.1	439.8	300.9	138.91	3.166	
10,900.0	7,510.0	10,838.4	7,510.0	73.2	71.7	-90.13	-3,604.2	-509.7	439.8	297.2	142.65	3.083	
11,000.0	7,510.0	10,938.4	7,510.0	75.0	73.6	-90.13	-3,704.2	-509.3	439.8	293.4	146.39	3.004	
11,100.0	7,510.0	11,038.4	7,510.0	76.8	75.5	-90.13	-3,804.1	-509.0	439.8	289.7	150.13	2.929	
11,200.0	7,510.0	11,138.4	7,510.0	78.7	77.3	-90.13	-3,904.1	-508.6	439.8	285.9	153.89	2.858	
11,300.0	7,510.0	11,238.4	7,510.0	80.5	79.2	-90.13	-4,004.1	-508.2	439.8	282.2	157.64	2.790	
11,400.0	7,510.0	11,338.4	7,510.0	82.4	81.1	-90.13	-4,104.1	-507.8	439.8	278.4	161.40	2.725	
11,500.0	7,510.0	11,438.4	7,510.0	84.2	82.9	-90.13	-4,204.1	-507.4	439.8	274.6	165.17	2.663	
11,600.0	7,510.0	11,538.4	7,510.0	86.1	84.8	-90.13	-4,304.1	-507.1	439.8	270.9	168.94	2.603	
11,700.0	7,510.0	11,638.4	7,510.0	87.9	86.7	-90.13	-4,404.1	-506.7	439.8	267.1	172.71	2.547	
11,800.0	7,510.0	11,738.4	7,510.0	89.8	88.5	-90.13	-4,504.1	-506.3	439.8	263.5	176.35	2.494	
11,809.9	7,510.0	11,748.3	7,510.0	90.0	88.6	-90.13	-4,514.1	-506.3	439.8	263.1	176.69	2.489 SF	

Company:	Synergy Resources	Local Co-ordinate Reference:	Well SRC Gies 34-15-22CHZ
Project:	SEC.15-T7N-R65W	TVD Reference:	WELL @ 4852.0ft (RKB - 13')
Reference Site:	SRC Gies Pad Sec.15-T7N-R65W	MD Reference:	WELL @ 4852.0ft (RKB - 13')
Site Error:	0.0ft	North Reference:	True
Reference Well:	SRC Gies 34-15-22CHZ	Survey Calculation Method:	Minimum Curvature
Well Error:	0.0ft	Output errors are at	2.00 sigma
Reference Wellbore	Wellbore #1	Database:	landmark
Reference Design:	Plan #1 (5-6-14)	Offset TVD Reference:	Offset Datum

Offset Design													Offset Site Error:	0.0ft
Survey Program: 0-MWD													Offset Well Error:	0.0ft
Reference		Offset		Semi Major Axis			Distance							Warning
Measured Depth (ft)	Vertical Depth (ft)	Measured Depth (ft)	Vertical Depth (ft)	Reference (ft)	Offset (ft)	Highside Toolface (°)	Offset Wellbore Centre +N/-S (ft)	+E/-W (ft)	Between Centres (ft)	Between Ellipses (ft)	Minimum Separation (ft)	Separation Factor		
0.0	0.0	0.0	0.0	0.0	0.0	91.73	-1.8	60.0	60.0					
100.0	100.0	99.0	99.0	0.1	0.1	91.73	-1.8	60.0	60.0	59.8	0.22	268.457		
200.0	200.0	199.0	199.0	0.3	0.3	91.73	-1.8	60.0	60.0	59.4	0.67	89.337 CC, ES		
300.0	300.0	299.0	299.0	0.6	0.6	-179.16	-1.8	60.0	61.8	60.7	1.12	55.268		
400.0	399.8	398.8	398.8	0.8	0.8	-179.23	-1.8	60.0	67.0	65.5	1.57	42.785		
500.0	499.5	498.5	498.5	1.0	1.0	-179.31	-1.8	60.0	75.7	73.7	2.02	37.478		
600.0	598.7	597.7	597.7	1.3	1.2	-179.41	-1.8	60.0	87.9	85.4	2.48	35.477		
700.0	697.5	696.5	696.5	1.7	1.5	-179.49	-1.8	60.0	103.4	100.5	2.93	35.234		
800.0	796.2	795.2	795.2	2.0	1.7	-179.56	-1.8	60.0	119.7	116.3	3.39	35.324		
900.0	894.8	893.8	893.8	2.4	1.9	-179.61	-1.8	60.0	136.0	132.2	3.85	35.352		
1,000.0	993.5	992.5	992.5	2.7	2.1	-179.66	-1.8	60.0	152.3	148.0	4.31	35.351		
1,100.0	1,092.1	1,091.1	1,091.1	3.1	2.3	-179.69	-1.8	60.0	168.6	163.8	4.77	35.333		
1,200.0	1,190.8	1,189.8	1,189.8	3.5	2.6	-179.72	-1.8	60.0	184.9	179.7	5.24	35.309		
1,300.0	1,289.5	1,295.1	1,295.1	3.9	2.8	-179.73	-1.8	58.4	199.7	194.0	5.70	35.040		
1,400.0	1,388.1	1,402.2	1,402.0	4.3	3.0	-179.70	-1.9	52.9	210.9	204.8	6.15	34.272		
1,500.0	1,486.8	1,508.9	1,508.3	4.6	3.2	-179.65	-2.0	43.4	218.4	211.8	6.61	33.013		
1,600.0	1,585.5	1,608.7	1,607.6	5.0	3.5	-179.59	-2.1	33.1	224.4	217.3	7.07	31.729		
1,700.0	1,684.1	1,708.6	1,706.9	5.4	3.7	-179.53	-2.2	22.8	230.4	222.9	7.53	30.585		
1,800.0	1,782.8	1,808.4	1,806.2	5.8	4.0	-179.48	-2.3	12.5	236.5	228.5	8.00	29.562		
1,900.0	1,881.4	1,908.2	1,905.5	6.2	4.2	-179.43	-2.4	2.2	242.5	234.0	8.47	28.640		
2,000.0	1,980.1	2,008.0	2,004.7	6.6	4.5	-179.38	-2.6	-8.1	248.5	239.6	8.94	27.810		
2,100.0	2,078.8	2,107.8	2,104.0	7.0	4.7	-179.33	-2.7	-18.4	254.6	245.2	9.41	27.056		
2,200.0	2,177.4	2,207.6	2,203.3	7.3	5.0	-179.29	-2.8	-28.8	260.6	250.7	9.88	26.370		
2,300.0	2,276.1	2,307.5	2,302.6	7.7	5.3	-179.25	-2.9	-39.1	266.6	256.3	10.36	25.742		
2,400.0	2,374.7	2,407.3	2,401.9	8.1	5.6	-179.21	-3.0	-49.4	272.7	261.8	10.83	25.167		
2,500.0	2,473.4	2,507.1	2,501.2	8.5	5.8	-179.17	-3.1	-59.7	278.7	267.4	11.31	24.638		
2,600.0	2,572.1	2,606.9	2,600.5	8.9	6.1	-179.13	-3.2	-70.0	284.7	273.0	11.79	24.149		
2,700.0	2,670.7	2,706.7	2,699.7	9.3	6.4	-179.10	-3.4	-80.3	290.8	278.5	12.27	23.697		
2,800.0	2,769.4	2,806.6	2,799.0	9.7	6.7	-179.06	-3.5	-90.6	296.8	284.1	12.75	23.278		
2,900.0	2,868.1	2,906.4	2,898.3	10.0	7.0	-179.03	-3.6	-100.9	302.8	289.6	13.23	22.887		
3,000.0	2,966.7	3,006.2	2,997.6	10.4	7.3	-179.00	-3.7	-111.2	308.9	295.2	13.71	22.524		
3,100.0	3,065.4	3,106.0	3,096.9	10.8	7.5	-178.97	-3.8	-121.5	314.9	300.7	14.20	22.184		
3,200.0	3,164.0	3,205.8	3,196.2	11.2	7.8	-178.94	-3.9	-131.8	320.9	306.3	14.68	21.865		
3,300.0	3,262.7	3,305.6	3,295.4	11.6	8.1	-178.91	-4.0	-142.1	327.0	311.8	15.16	21.566		
3,400.0	3,361.4	3,405.5	3,394.7	12.0	8.4	-178.89	-4.1	-152.4	333.0	317.4	15.65	21.285		
3,500.0	3,460.0	3,505.3	3,494.0	12.4	8.7	-178.86	-4.3	-162.7	339.1	322.9	16.13	21.021		
3,600.0	3,558.7	3,605.1	3,593.3	12.7	9.0	-178.84	-4.4	-173.0	345.1	328.5	16.61	20.771		
3,700.0	3,657.4	3,704.9	3,692.6	13.1	9.3	-178.81	-4.5	-183.4	351.1	334.0	17.10	20.535		
3,800.0	3,756.0	3,804.7	3,791.9	13.5	9.6	-178.79	-4.6	-193.7	357.2	339.6	17.58	20.312		
3,900.0	3,854.7	3,904.5	3,891.1	13.9	9.9	-178.77	-4.7	-204.0	363.2	345.1	18.07	20.100		
4,000.0	3,953.3	4,004.4	3,990.4	14.3	10.2	-178.74	-4.8	-214.3	369.2	350.7	18.55	19.899		
4,100.0	4,052.0	4,104.2	4,089.7	14.7	10.4	-178.72	-4.9	-224.6	375.3	356.2	19.04	19.709		
4,200.0	4,150.7	4,204.0	4,189.0	15.1	10.7	-178.70	-5.1	-234.9	381.3	361.8	19.53	19.527		
4,300.0	4,249.3	4,303.8	4,288.3	15.5	11.0	-178.68	-5.2	-245.2	387.3	367.3	20.01	19.354		
4,400.0	4,348.0	4,403.6	4,387.6	15.8	11.3	-178.66	-5.3	-255.5	393.4	372.9	20.50	19.190		
4,500.0	4,446.7	4,503.5	4,486.8	16.2	11.6	-178.65	-5.4	-265.8	399.4	378.4	20.99	19.032		
4,600.0	4,545.3	4,603.3	4,586.1	16.6	11.9	-178.63	-5.5	-276.1	405.4	384.0	21.47	18.882		
4,700.0	4,644.0	4,703.1	4,685.4	17.0	12.2	-178.61	-5.6	-286.4	411.5	389.5	21.96	18.738		
4,800.0	4,742.6	4,792.6	4,774.5	17.4	12.4	-178.60	-5.7	-294.8	418.5	396.1	22.41	18.679		
4,900.0	4,841.3	4,879.3	4,861.1	17.8	12.6	-178.61	-5.8	-300.3	428.5	405.7	22.82	18.778		
5,000.0	4,940.0	4,965.4	4,947.1	18.2	12.8	-178.64	-5.8	-303.2	441.5	418.3	23.23	19.006		
5,100.0	5,038.6	5,055.9	5,037.6	18.5	12.9	-178.68	-5.8	-303.7	457.2	433.6	23.65	19.332		

CC - Min centre to center distance or convergent point, SF - min separation factor, ES - min ellipse separation

Company:	Synergy Resources	Local Co-ordinate Reference:	Well SRC Gies 34-15-22CHZ
Project:	SEC.15-T7N-R65W	TVD Reference:	WELL @ 4852.0ft (RKB - 13')
Reference Site:	SRC Gies Pad Sec.15-T7N-R65W	MD Reference:	WELL @ 4852.0ft (RKB - 13')
Site Error:	0.0ft	North Reference:	True
Reference Well:	SRC Gies 34-15-22CHZ	Survey Calculation Method:	Minimum Curvature
Well Error:	0.0ft	Output errors are at	2.00 sigma
Reference Wellbore	Wellbore #1	Database:	landmark
Reference Design:	Plan #1 (5-6-14)	Offset TVD Reference:	Offset Datum

Offset Design													Offset Site Error:	0.0 ft
Survey Program: 0-MWD													Offset Well Error:	0.0 ft
Reference		Offset		Semi Major Axis			Distance							Warning
Measured Depth (ft)	Vertical Depth (ft)	Measured Depth (ft)	Vertical Depth (ft)	Reference (ft)	Offset (ft)	Highside Toolface (°)	Offset Wellbore Centre +N/-S (ft)	+E/-W (ft)	Between Centres (ft)	Between Ellipses (ft)	Minimum Separation (ft)	Separation Factor		
5,200.0	5,137.3	5,154.6	5,136.3	18.9	13.1	-178.72	-5.8	-303.7	473.5	449.4	24.10	19.650		
5,300.0	5,236.0	5,253.3	5,235.0	19.3	13.3	-178.77	-5.8	-303.7	489.8	465.3	24.55	19.953		
5,400.0	5,334.6	5,351.9	5,333.6	19.7	13.4	-178.80	-5.8	-303.7	506.1	481.1	25.00	20.244		
5,500.0	5,433.3	5,450.6	5,432.3	20.1	13.6	-178.84	-5.8	-303.7	522.4	497.0	25.45	20.524		
5,600.0	5,531.9	5,549.2	5,530.9	20.5	13.8	-178.88	-5.8	-303.7	538.7	512.8	25.91	20.794		
5,700.0	5,630.6	5,647.9	5,629.6	20.9	14.0	-178.91	-5.8	-303.7	555.0	528.7	26.36	21.055		
5,800.0	5,729.3	5,746.6	5,728.3	21.3	14.2	-178.94	-5.8	-303.7	571.3	544.5	26.82	21.305		
5,900.0	5,827.9	5,845.2	5,826.9	21.6	14.4	-178.97	-5.8	-303.7	587.6	560.4	27.27	21.547		
6,000.0	5,926.6	5,943.9	5,925.6	22.0	14.5	-179.00	-5.8	-303.7	603.9	576.2	27.73	21.781		
6,100.0	6,025.2	6,042.5	6,024.2	22.4	14.7	-179.02	-5.8	-303.7	620.2	592.0	28.18	22.006		
6,200.0	6,124.1	6,141.4	6,123.1	22.7	14.9	-179.05	-5.8	-303.7	635.1	606.4	28.64	22.175		
6,300.0	6,223.5	6,240.8	6,222.5	23.0	15.1	-179.07	-5.8	-303.7	646.5	617.4	29.03	22.266		
6,400.0	6,323.2	6,340.5	6,322.2	23.2	15.3	-179.09	-5.8	-303.7	654.4	625.0	29.39	22.264		
6,500.0	6,423.1	6,440.4	6,422.1	23.3	15.5	-179.09	-5.8	-303.7	658.8	629.1	29.71	22.172		
6,600.0	6,523.1	6,540.4	6,522.1	23.4	15.7	91.77	-5.8	-303.7	659.8	629.8	30.04	21.968		
6,700.0	6,623.1	6,636.7	6,618.2	23.6	15.9	92.31	-12.1	-303.7	660.1	629.7	30.41	21.707		
6,800.0	6,723.1	6,729.8	6,709.3	23.7	16.0	93.89	-30.3	-303.6	661.3	630.4	30.82	21.457		
6,900.0	6,823.0	6,817.0	6,792.0	23.8	16.2	-83.46	-57.9	-303.5	664.3	633.0	31.28	21.240		
7,000.0	6,922.3	6,900.0	6,867.0	23.9	16.4	-80.78	-93.4	-303.3	669.0	637.2	31.78	21.053		
7,100.0	7,019.2	6,981.1	6,935.9	24.1	16.6	-78.27	-136.2	-303.2	674.8	642.4	32.33	20.871		
7,200.0	7,111.6	7,060.0	6,997.7	24.2	16.8	-75.99	-185.0	-303.0	681.1	648.2	32.90	20.704		
7,300.0	7,197.8	7,137.2	7,052.8	24.4	17.1	-73.95	-239.2	-302.8	687.7	654.2	33.47	20.547		
7,400.0	7,276.2	7,213.1	7,100.9	24.6	17.4	-72.17	-297.8	-302.6	694.0	660.0	34.03	20.397		
7,500.0	7,345.2	7,287.9	7,141.9	24.8	17.9	-70.68	-360.3	-302.3	699.8	665.3	34.58	20.240		
7,600.0	7,403.4	7,361.9	7,175.9	25.1	18.4	-69.49	-425.9	-302.1	704.8	669.7	35.15	20.052		
7,700.0	7,449.8	7,435.2	7,202.8	25.6	19.0	-68.60	-494.2	-301.8	708.7	672.9	35.79	19.803		
7,800.0	7,483.4	7,508.2	7,222.4	26.1	19.7	-68.02	-564.4	-301.5	711.3	674.8	36.54	19.467		
7,900.0	7,503.6	7,580.9	7,234.8	26.8	20.5	-67.76	-636.0	-301.2	712.5	675.1	37.46	19.021		
8,000.0	7,510.0	7,653.5	7,239.9	27.6	21.3	-67.80	-708.4	-301.0	712.3	673.7	38.62	18.446		
8,034.5	7,510.0	7,682.9	7,240.0	27.9	21.7	-67.81	-737.8	-300.8	712.3	672.9	39.35	18.101		
8,100.0	7,510.0	7,748.4	7,240.0	28.5	22.5	-67.81	-803.3	-300.6	712.3	671.4	40.88	17.423		
8,200.0	7,510.0	7,848.4	7,240.0	29.5	23.9	-67.81	-903.3	-300.2	712.3	668.9	43.37	16.424		
8,300.0	7,510.0	7,948.4	7,240.0	30.6	25.3	-67.81	-1,003.3	-299.8	712.3	666.3	46.00	15.483		
8,400.0	7,510.0	8,048.4	7,240.0	31.8	26.8	-67.81	-1,103.3	-299.4	712.3	663.5	48.76	14.607		
8,500.0	7,510.0	8,148.4	7,240.0	33.1	28.3	-67.81	-1,203.3	-299.0	712.3	660.7	51.63	13.797		
8,600.0	7,510.0	8,248.4	7,240.0	34.5	29.9	-67.81	-1,303.3	-298.6	712.3	657.7	54.58	13.050		
8,700.0	7,510.0	8,348.4	7,240.0	35.9	31.5	-67.81	-1,403.3	-298.3	712.3	654.7	57.61	12.365		
8,800.0	7,510.0	8,448.4	7,240.0	37.3	33.1	-67.81	-1,503.3	-297.9	712.3	651.6	60.70	11.735		
8,900.0	7,510.0	8,548.4	7,240.0	38.8	34.8	-67.81	-1,603.3	-297.5	712.3	648.5	63.85	11.157		
9,000.0	7,510.0	8,648.4	7,240.0	40.3	36.5	-67.81	-1,703.3	-297.1	712.4	645.3	67.04	10.626		
9,100.0	7,510.0	8,748.4	7,240.0	41.9	38.2	-67.81	-1,803.3	-296.7	712.4	642.1	70.27	10.137		
9,200.0	7,510.0	8,848.4	7,240.0	43.5	40.0	-67.81	-1,903.3	-296.3	712.4	638.8	73.54	9.687		
9,300.0	7,510.0	8,948.4	7,240.0	45.1	41.7	-67.81	-2,003.3	-295.9	712.4	635.5	76.84	9.271		
9,400.0	7,510.0	9,048.4	7,240.0	46.8	43.5	-67.81	-2,103.3	-295.5	712.4	632.2	80.16	8.887		
9,500.0	7,510.0	9,148.4	7,240.0	48.5	45.3	-67.82	-2,203.3	-295.1	712.4	628.9	83.51	8.530		
9,600.0	7,510.0	9,248.4	7,240.0	50.1	47.1	-67.82	-2,303.3	-294.8	712.4	625.5	86.88	8.200		
9,700.0	7,510.0	9,348.4	7,240.0	51.9	48.9	-67.82	-2,403.3	-294.4	712.4	622.2	90.27	7.892		
9,800.0	7,510.0	9,448.4	7,240.0	53.6	50.7	-67.82	-2,503.3	-294.0	712.4	618.8	93.68	7.605		
9,900.0	7,510.0	9,548.4	7,240.0	55.3	52.5	-67.82	-2,603.3	-293.6	712.4	615.3	97.09	7.338		
10,000.0	7,510.0	9,648.4	7,240.0	57.1	54.3	-67.82	-2,703.3	-293.2	712.5	611.9	100.53	7.087		
10,100.0	7,510.0	9,748.4	7,240.0	58.8	56.2	-67.82	-2,803.3	-292.8	712.5	608.5	103.97	6.852		
10,200.0	7,510.0	9,848.4	7,240.0	60.6	58.0	-67.82	-2,903.3	-292.4	712.5	605.0	107.43	6.632		

CC - Min centre to center distance or convergent point, SF - min separation factor, ES - min ellipse separation

Company:	Synergy Resources	Local Co-ordinate Reference:	Well SRC Gies 34-15-22CHZ
Project:	SEC.15-T7N-R65W	TVD Reference:	WELL @ 4852.0ft (RKB - 13')
Reference Site:	SRC Gies Pad Sec.15-T7N-R65W	MD Reference:	WELL @ 4852.0ft (RKB - 13')
Site Error:	0.0ft	North Reference:	True
Reference Well:	SRC Gies 34-15-22CHZ	Survey Calculation Method:	Minimum Curvature
Well Error:	0.0ft	Output errors are at	2.00 sigma
Reference Wellbore	Wellbore #1	Database:	landmark
Reference Design:	Plan #1 (5-6-14)	Offset TVD Reference:	Offset Datum

Offset Design SRC Gies Pad Sec.15-T7N-R65W - SRC Gies T-15-22NHZ - Wellbore #1 - Plan #1 (5-7-14)												Offset Site Error:	0.0 ft
Survey Program: 0-MWD												Offset Well Error:	0.0 ft
Reference		Offset		Semi Major Axis			Distance						Warning
Measured Depth (ft)	Vertical Depth (ft)	Measured Depth (ft)	Vertical Depth (ft)	Reference (ft)	Offset (ft)	Highside Toolface (°)	Offset Wellbore Centre +N/-S (ft)	+E/-W (ft)	Between Centres (ft)	Between Ellipses (ft)	Minimum Separation (ft)	Separation Factor	
10,300.0	7,510.0	9,948.4	7,240.0	62.4	59.9	-67.82	-3,003.3	-292.0	712.5	601.6	110.89	6.425	
10,400.0	7,510.0	10,048.4	7,240.0	64.1	61.7	-67.82	-3,103.3	-291.6	712.5	598.1	114.37	6.230	
10,500.0	7,510.0	10,148.4	7,240.0	65.9	63.6	-67.82	-3,203.3	-291.3	712.5	594.7	117.85	6.046	
10,600.0	7,510.0	10,248.4	7,240.0	67.7	65.4	-67.82	-3,303.3	-290.9	712.5	591.2	121.34	5.872	
10,700.0	7,510.0	10,348.4	7,240.0	69.6	67.3	-67.82	-3,403.3	-290.5	712.5	587.7	124.84	5.708	
10,800.0	7,510.0	10,448.4	7,240.0	71.4	69.2	-67.82	-3,503.3	-290.1	712.5	584.2	128.34	5.552	
10,900.0	7,510.0	10,548.4	7,240.0	73.2	71.0	-67.82	-3,603.3	-289.7	712.5	580.7	131.85	5.404	
11,000.0	7,510.0	10,648.4	7,240.0	75.0	72.9	-67.82	-3,703.3	-289.3	712.6	577.2	135.36	5.264	
11,100.0	7,510.0	10,748.4	7,240.0	76.8	74.8	-67.82	-3,803.3	-288.9	712.6	573.7	138.88	5.131	
11,200.0	7,510.0	10,848.4	7,240.0	78.7	76.7	-67.82	-3,903.3	-288.5	712.6	570.2	142.40	5.004	
11,300.0	7,510.0	10,948.4	7,240.0	80.5	78.5	-67.82	-4,003.3	-288.2	712.6	566.6	145.93	4.883	
11,400.0	7,510.0	11,048.4	7,240.0	82.4	80.4	-67.82	-4,103.3	-287.8	712.6	563.1	149.46	4.768	
11,500.0	7,510.0	11,148.4	7,240.0	84.2	82.3	-67.82	-4,203.3	-287.4	712.6	559.6	153.00	4.658	
11,600.0	7,510.0	11,248.4	7,240.0	86.1	84.2	-67.82	-4,303.2	-287.0	712.6	556.1	156.54	4.552	
11,700.0	7,510.0	11,348.4	7,240.0	87.9	86.1	-67.82	-4,403.2	-286.6	712.6	552.5	160.08	4.452	
11,800.0	7,510.0	11,448.4	7,240.0	89.8	88.0	-67.82	-4,503.2	-286.2	712.6	549.0	163.62	4.355	
11,809.9	7,510.0	11,458.3	7,240.0	90.0	88.2	-67.82	-4,513.2	-286.2	712.6	548.7	163.98	4.346 SF	

Company:	Synergy Resources	Local Co-ordinate Reference:	Well SRC Gies 34-15-22CHZ
Project:	SEC.15-T7N-R65W	TVD Reference:	WELL @ 4852.0ft (RKB - 13')
Reference Site:	SRC Gies Pad Sec.15-T7N-R65W	MD Reference:	WELL @ 4852.0ft (RKB - 13')
Site Error:	0.0ft	North Reference:	True
Reference Well:	SRC Gies 34-15-22CHZ	Survey Calculation Method:	Minimum Curvature
Well Error:	0.0ft	Output errors are at	2.00 sigma
Reference Wellbore	Wellbore #1	Database:	landmark
Reference Design:	Plan #1 (5-6-14)	Offset TVD Reference:	Offset Datum

Reference Depths are relative to WELL @ 4852.0ft (RKB - 13')

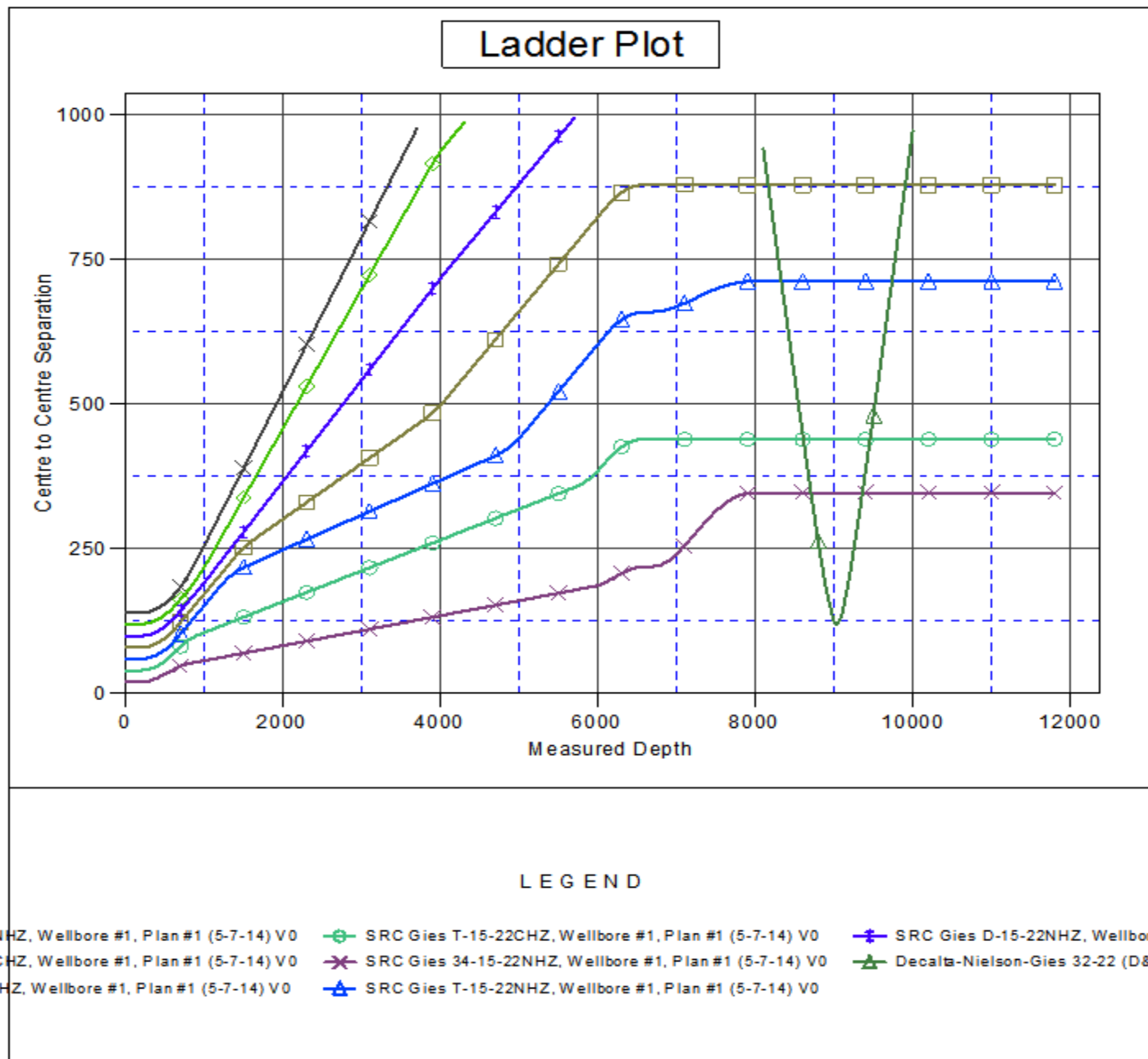
Offset Depths are relative to Offset Datum

Central Meridian is -105.500000 °

Coordinates are relative to: SRC Gies 34-15-22CHZ

Coordinate System is US State Plane 1983, Colorado Northern Zone

Grid Convergence at Surface is: 0.55°



Company:	Synergy Resources	Local Co-ordinate Reference:	Well SRC Gies 34-15-22CHZ
Project:	SEC.15-T7N-R65W	TVD Reference:	WELL @ 4852.0ft (RKB - 13')
Reference Site:	SRC Gies Pad Sec.15-T7N-R65W	MD Reference:	WELL @ 4852.0ft (RKB - 13')
Site Error:	0.0ft	North Reference:	True
Reference Well:	SRC Gies 34-15-22CHZ	Survey Calculation Method:	Minimum Curvature
Well Error:	0.0ft	Output errors are at	2.00 sigma
Reference Wellbore	Wellbore #1	Database:	landmark
Reference Design:	Plan #1 (5-6-14)	Offset TVD Reference:	Offset Datum

Reference Depths are relative to WELL @ 4852.0ft (RKB - 13')

Offset Depths are relative to Offset Datum

Central Meridian is -105.500000 °

Coordinates are relative to: SRC Gies 34-15-22CHZ

Coordinate System is US State Plane 1983, Colorado Northern Zone

Grid Convergence at Surface is: 0.55°

