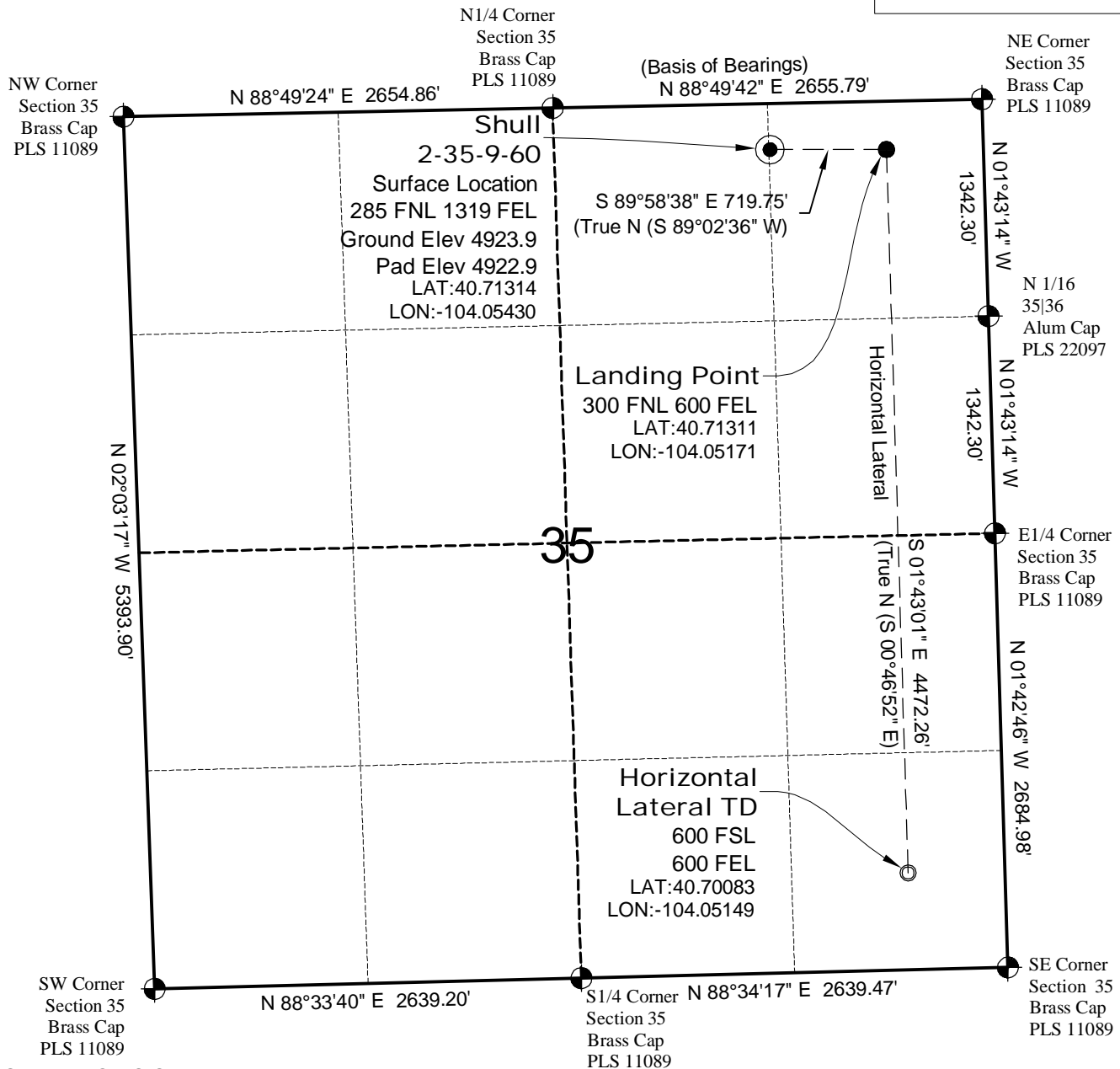


WELL LOCATION MAP

**SHULL
1-35-9-60 PAD**

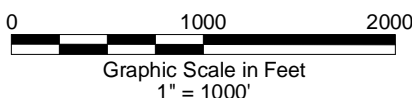


SURVEYOR'S STATEMENT

The undersigned hereby states that the well location shown hereon was staked on the ground based on existing monumentation and/or physical evidence found in the field and is correct to the best of my knowledge, information and belief.

NOTES

- 1.) Horizontal coordinates based on NGS control point "SNOW" and vertical datum based on NGS control point "G 209" with an elevation of 4955.32. NAVD 1988.
 - 2.) All directions, distances, and dimensions shown hereon are based on coordinates from the "Colorado coordinate system of 1983 north zone" (article 52 of title 38, C.R.S.).
 - 3.) All section line dimensions shown hereon are based on field measurements of existing monuments and/or physical evidence found in the field unless otherwise indicated.
 - 4.) Physical features shown hereon are for graphical representation only.
 - 5.) See Form 2A for visible improvements within 500' of wellhead.
 - 6.) Distances to nearest section lines are measured perpendicularly.
 - 7.) This is not a land survey nor land survey plat.
 - 8.) Date of Survey 3/1/13; Date of Drawing 5/20/14. REV 1
- PDOP Reading: 1.7 Instrument Operator: Marc Woodard



CARRIZO OIL & GAS, INC
SHULL 2-35-9-60

SL NE1/4 NE1/4 SEC. 35 T9N R60W
HL TD SE1/4 SE1/4 SEC. 35 T9N R60W
6th PM WELD COUNTY COLORADO