

Location:	COLORADO	Slot:	SLOT#22 RANCHVIEW 28C-11HZ (350'FSL & 2299'FWL, SEC.14)
Field:	WELD COUNTY (KERR MCGEE)	Well:	RANCHVIEW 28C-11HZ
Facility:	SEC.14-T1N-R68W	Wellbore:	RANCHVIEW 28C-11HZ PWB

Location:	COLORADO	Slot:	SLOT#22 RANCHVIEW 28C-11HZ (350'FSL & 2299'FWL, SEC.14)
Field:	WELD COUNTY (KERR MCGEE)	Well:	RANCHVIEW 28C-11HZ
Facility:	SEC.14-T1N-R68W	Wellbore:	RANCHVIEW 28C-11HZ PWB

Plot reference wellpath is RANCHVIEW 28C-11HZ (PERMIT REV-3) PWP

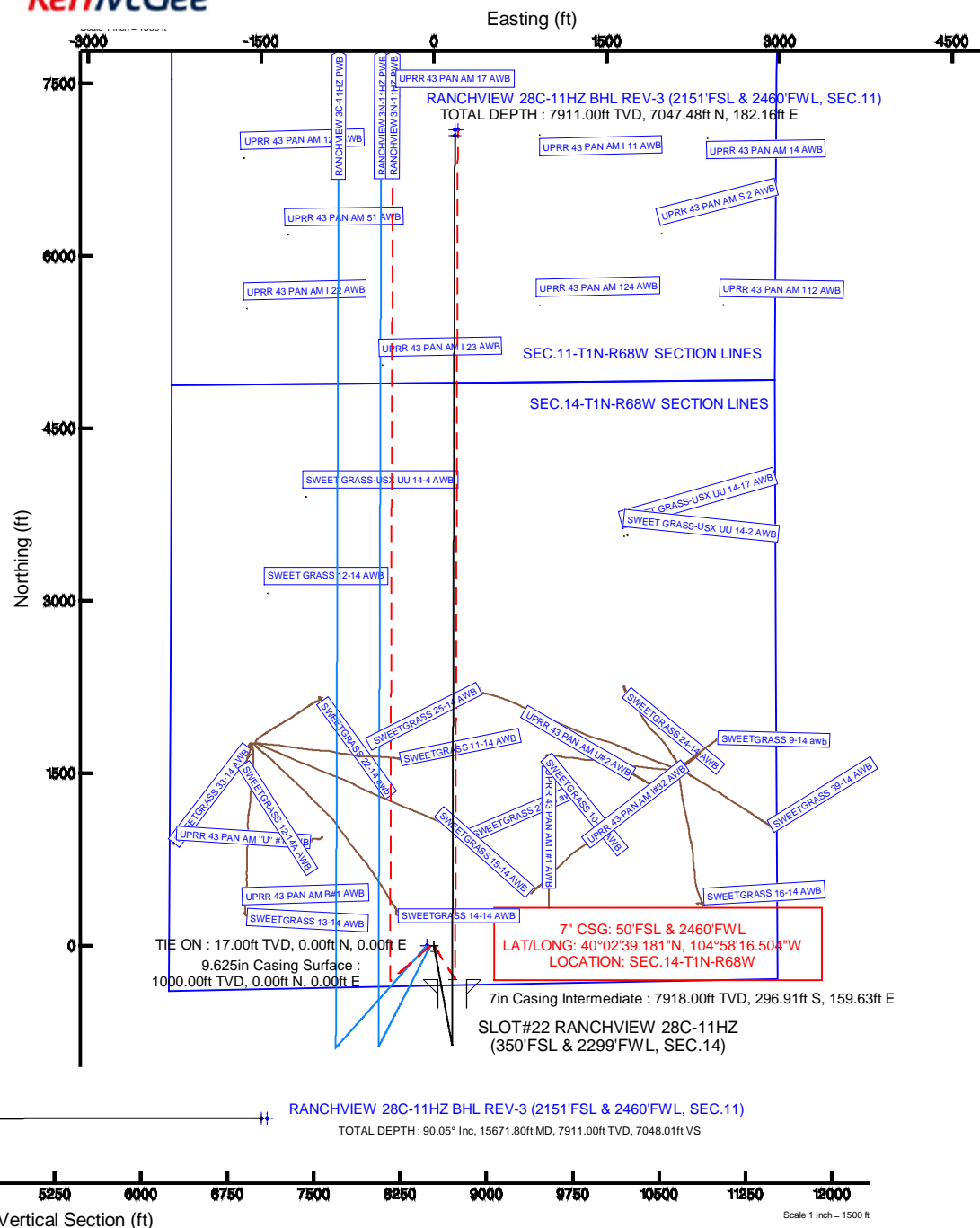
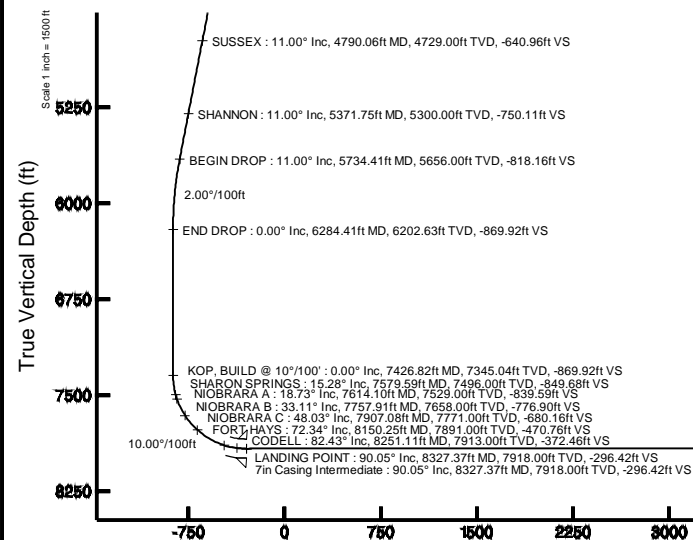
True vertical depths are referenced to PERMIT (17KB) (RKB)	Grid System: NAD83 / Lambert Colorado SP, Northern Zone (501), US feet
Measured depths are referenced to PERMIT (17KB) (RKB)	North Reference: True north
PERMIT (17KB) (RKB) to Mean Sea Level: 5161 feet	Scale: True distance
Mean Sea Level to Mud line (At Slot: SLOT#22 RANCH/VIEW 28C-1HZ (350FSL & 2299FWL, SEC.14): 0 feet	Depths are in feet
Coordinates are in feet referenced to Slot	Created by: robina01 on 02/Apr/2014

Facility Name			Grid East (US ft)	Grid North (US ft)	Latitude	Longitude
SEC. 14-T1N-R66W			3150004.168	1261260.607	40°02'57.498"N	104°57'51.026"W
Slot	Local N (ft)	Local E (ft)	Grid East (US ft)	Grid North (US ft)	Latitude	Longitude
SLOT#222 RANCHVIEW 28C-11HZ (350FSL & 2299FWL, SEC. 14)	-1556.54	-2141.07	3147872.630	1259691.220	40°02'42.115"N	104°58'18.556"W
PERMIT (17XB) (R0B) to Mud line (At Slot: SLOT#222 RANCHVIEW 28C-11HZ (350FSL & 2299FWL, SEC. 14))					S161R	
Mean Sea Level to Mud line (At Slot: SLOT#222 RANCHVIEW 28C-11HZ (350FSL & 2299FWL, SEC. 14))					0R	
PERMIT (17XB) (R0B) to Mean Sea Level					S161R	

Start MD (ft)	End MD (ft)	Tool	Model	Log Name/Comment	Wellbore
17.00	15671.80	NaviTrak	NaviTrak (MAGCORR, IFR)		RANCHVIEW 28C-11HZ PWB

Name	MD (ft)	TVD (ft)	Local N (ft)	Local E (ft)	Grid East (US ft)	Grid North (US ft)	Latitude	Longitude
SEC-11-TIN-REVB SECTION LINES		0.00	-1.11	-60.20	3147812.44	1259689.75	40°02'42.104"N	104°58'19.330"W
SEC-14-TIN-REVB SECTION LINES		0.00	-1.11	-60.20	3147812.44	1259689.75	40°02'42.104"N	104°58'19.330"W
RANCHWYB 28C-11HE B4- ON PLAT REV-1 (2201FSL & 2460FSL, SEC-11)		7911.00	7097.48	207.16	3148012.50	1268769.54	40°03'52.254"N	104°58'16.892"W
RANCHWYB 28C-11HE B4- REV-2 (2201FSL & 2460FSL, SEC-11)		7911.00	7097.48	182.16	3148012.51	1268769.39	40°03'52.254"N	104°58'16.213"W
RANCHWYB 28C-11HE B4- REV-3 (2151FSL & 2460FSL, SEC-11)		15671.80	7911.00	7047.48	3148012.80	1268769.39	40°03'51.760"N	104°58'16.213"W

Design Comment	MD (ft)	Inc (°)	Az (°)	TVD (ft)	Local N (ft)	Local E (ft)	DLS (°/100ft)	VS (ft)
TIE ON	17.00	0.000	169.720	17.00	0.00	0.00	0.00	0.00
BEGIN NUDGE	1100.00	0.000	169.720	1100.00	0.00	0.00	0.00	0.00
END NUDGE	1650.00	11.000	169.720	1646.63	-51.79	9.39	2.00	-51.76
BEGIN DROP	5734.41	11.000	169.720	5656.00	-818.62	148.47	0.00	-818.16
END DROP	6284.41	0.000	0.176	6202.63	-870.41	157.87	2.00	-869.92
KOP, BUILD @ 10°/100'	7426.82	0.000	0.176	7345.04	-870.41	157.87	0.00	-869.92
LANDING POINT	8327.37	90.055	0.176	7918.00	-296.91	159.63	10.00	-296.42
TOTAL DEPTH	15671.80	90.055	0.176	7911.00	7047.48	182.16	0.00	7048.01



Azimuth 0.18° with reference 0.00 N. 0.00 E

REFERENCE WELLPATH IDENTIFICATION

Operator	KERR-MCGEE OIL & GAS ONSHORE LP	Slot	SLOT#22 RANCHVIEW 28C-11HZ (350'FSL & 2299'FWL, SEC.14)
Area	COLORADO	Well	RANCHVIEW 28C-11HZ
Field	WELD COUNTY (KERR MCGEE)	Wellbore	RANCHVIEW 28C-11HZ PWB
Facility	SEC.14-T1N-R68W		

REPORT SETUP INFORMATION

Projection System	NAD83 / Lambert Colorado SP, Northern Zone (501), US feet	Software System	WellArchitect® 4.0.0
North Reference	True	User	Robiale01
Scale	0.999963	Report Generated	02/Apr/2014 at 12:14
Convergence at slot	n/a	Database/Source file	WellArchitectDB/RANCHVIEW_28C-11HZ_PWB.xml

WELLPATH LOCATION

	Local coordinates		Grid coordinates		Geographic coordinates	
	North[ft]	East[ft]	Easting[US ft]	Northing[US ft]	Latitude	Longitude
Slot Location	-1556.54	-2141.07	3147872.63	1259691.22	40°02'42.115"N	104°58'18.556"W
Facility Reference Pt			3150004.17	1261260.61	40°02'57.498"N	104°57'51.026"W
Field Reference Pt			3197771.84	1268891.29	40°04'09.600"N	104°47'36.000"W

WELLPATH DATUM

Calculation method	Minimum curvature	PERMIT (17'KB) (RKB) to Facility Vertical Datum	5161.00ft
Horizontal Reference Pt	Slot	PERMIT (17'KB) (RKB) to Mean Sea Level	5161.00ft
Vertical Reference Pt	PERMIT (17'KB) (RKB)	PERMIT (17'KB) (RKB) to Mud Line at Slot (SLOT#22 RANCHVIEW 28C-11HZ (350'FSL & 2299'FWL, SEC.14))	5161.00ft
MD Reference Pt	PERMIT (17'KB) (RKB)	Section Origin	N 0.00, E 0.00 ft
Field Vertical Reference	Mean Sea Level	Section Azimuth	0.18°

REFERENCE WELLPATH IDENTIFICATION

Operator	KERR-MCGEE OIL & GAS ONSHORE LP	Slot	SLOT#22 RANCHVIEW 28C-11HZ (350'FSL & 2299'FWL, SEC.14)
Area	COLORADO	Well	RANCHVIEW 28C-11HZ
Field	WELD COUNTY (KERR MCGEE)	Wellbore	RANCHVIEW 28C-11HZ PWB
Facility	SEC.14-T1N-R68W		

WELLPATH DATA (174 stations) † = interpolated/extrapolated station

MD [ft]	Inclination [°]	Azimuth [°]	TVD [ft]	Vert Sect [ft]	North [ft]	East [ft]	Latitude	Longitude	DLS [°/100ft]	Comments
0.00†	0.000	169.720	0.00	0.00	0.00	0.00	40°02'42.115"N	104°58'18.556"W	0.00	
17.00	0.000	169.720	17.00	0.00	0.00	0.00	40°02'42.115"N	104°58'18.556"W	0.00	TIE ON
117.00†	0.000	169.720	117.00	0.00	0.00	0.00	40°02'42.115"N	104°58'18.556"W	0.00	
217.00†	0.000	169.720	217.00	0.00	0.00	0.00	40°02'42.115"N	104°58'18.556"W	0.00	
317.00†	0.000	169.720	317.00	0.00	0.00	0.00	40°02'42.115"N	104°58'18.556"W	0.00	
417.00†	0.000	169.720	417.00	0.00	0.00	0.00	40°02'42.115"N	104°58'18.556"W	0.00	
517.00†	0.000	169.720	517.00	0.00	0.00	0.00	40°02'42.115"N	104°58'18.556"W	0.00	
617.00†	0.000	169.720	617.00	0.00	0.00	0.00	40°02'42.115"N	104°58'18.556"W	0.00	
717.00†	0.000	169.720	717.00	0.00	0.00	0.00	40°02'42.115"N	104°58'18.556"W	0.00	
817.00†	0.000	169.720	817.00	0.00	0.00	0.00	40°02'42.115"N	104°58'18.556"W	0.00	
917.00†	0.000	169.720	917.00	0.00	0.00	0.00	40°02'42.115"N	104°58'18.556"W	0.00	
1017.00†	0.000	169.720	1017.00	0.00	0.00	0.00	40°02'42.115"N	104°58'18.556"W	0.00	
1100.00	0.000	169.720	1100.00	0.00	0.00	0.00	40°02'42.115"N	104°58'18.556"W	0.00	BEGIN NUDGE
1117.00†	0.340	169.720	1117.00	-0.05	-0.05	0.01	40°02'42.115"N	104°58'18.556"W	2.00	
1217.00†	2.340	169.720	1216.97	-2.35	-2.35	0.43	40°02'42.092"N	104°58'18.551"W	2.00	
1217.03†	2.341	169.720	1217.00	-2.35	-2.35	0.43	40°02'42.092"N	104°58'18.551"W	2.00	FOX HILLS MARKER
1317.00†	4.340	169.720	1316.79	-8.08	-8.08	1.47	40°02'42.035"N	104°58'18.537"W	2.00	
1417.00†	6.340	169.720	1416.35	-17.23	-17.24	3.13	40°02'41.945"N	104°58'18.516"W	2.00	
1517.00†	8.340	169.720	1515.53	-29.79	-29.81	5.41	40°02'41.820"N	104°58'18.486"W	2.00	
1617.00†	10.340	169.720	1614.20	-45.75	-45.78	8.30	40°02'41.663"N	104°58'18.449"W	2.00	
1650.00	11.000	169.720	1646.63	-51.76	-51.79	9.39	40°02'41.603"N	104°58'18.435"W	2.00	END NUDGE
1717.00†	11.000	169.720	1712.40	-64.33	-64.37	11.67	40°02'41.479"N	104°58'18.406"W	0.00	
1817.00†	11.000	169.720	1810.56	-83.10	-83.14	15.08	40°02'41.293"N	104°58'18.362"W	0.00	
1917.00†	11.000	169.720	1908.72	-101.86	-101.92	18.48	40°02'41.108"N	104°58'18.318"W	0.00	
2017.00†	11.000	169.720	2006.88	-120.62	-120.69	21.89	40°02'40.922"N	104°58'18.275"W	0.00	
2117.00†	11.000	169.720	2105.05	-139.39	-139.47	25.30	40°02'40.737"N	104°58'18.231"W	0.00	
2217.00†	11.000	169.720	2203.21	-158.15	-158.24	28.70	40°02'40.551"N	104°58'18.187"W	0.00	
2317.00†	11.000	169.720	2301.37	-176.92	-177.02	32.11	40°02'40.366"N	104°58'18.143"W	0.00	
2417.00†	11.000	169.720	2399.54	-195.68	-195.79	35.51	40°02'40.180"N	104°58'18.099"W	0.00	
2517.00†	11.000	169.720	2497.70	-214.44	-214.57	38.92	40°02'39.995"N	104°58'18.056"W	0.00	
2617.00†	11.000	169.720	2595.86	-233.21	-233.34	42.32	40°02'39.809"N	104°58'18.012"W	0.00	
2717.00†	11.000	169.720	2694.02	-251.97	-252.11	45.73	40°02'39.624"N	104°58'17.968"W	0.00	
2817.00†	11.000	169.720	2792.19	-270.74	-270.89	49.13	40°02'39.438"N	104°58'17.924"W	0.00	
2917.00†	11.000	169.720	2890.35	-289.50	-289.66	52.54	40°02'39.252"N	104°58'17.880"W	0.00	
3017.00†	11.000	169.720	2988.51	-308.26	-308.44	55.94	40°02'39.067"N	104°58'17.837"W	0.00	
3117.00†	11.000	169.720	3086.67	-327.03	-327.21	59.35	40°02'38.881"N	104°58'17.793"W	0.00	
3217.00†	11.000	169.720	3184.84	-345.79	-345.99	62.75	40°02'38.696"N	104°58'17.749"W	0.00	
3317.00†	11.000	169.720	3283.00	-364.56	-364.76	66.16	40°02'38.510"N	104°58'17.705"W	0.00	
3417.00†	11.000	169.720	3381.16	-383.32	-383.54	69.56	40°02'38.325"N	104°58'17.662"W	0.00	
3517.00†	11.000	169.720	3479.33	-402.09	-402.31	72.97	40°02'38.139"N	104°58'17.618"W	0.00	
3617.00†	11.000	169.720	3577.49	-420.85	-421.09	76.37	40°02'37.954"N	104°58'17.574"W	0.00	
3717.00†	11.000	169.720	3675.65	-439.61	-439.86	79.78	40°02'37.768"N	104°58'17.530"W	0.00	
3817.00†	11.000	169.720	3773.81	-458.38	-458.63	83.18	40°02'37.583"N	104°58'17.486"W	0.00	
3917.00†	11.000	169.720	3871.98	-477.14	-477.41	86.59	40°02'37.397"N	104°58'17.443"W	0.00	
4017.00†	11.000	169.720	3970.14	-495.91	-496.18	89.99	40°02'37.212"N	104°58'17.399"W	0.00	

REFERENCE WELLPATH IDENTIFICATION

Operator	KERR-MCGEE OIL & GAS ONSHORE LP	Slot	SLOT#22 RANCHVIEW 28C-11HZ (350'FSL & 2299'FWL, SEC.14)
Area	COLORADO	Well	RANCHVIEW 28C-11HZ
Field	WELD COUNTY (KERR MCGEE)	Wellbore	RANCHVIEW 28C-11HZ PWB
Facility	SEC.14-T1N-R68W		

WELLPATH DATA (174 stations) † = interpolated/extrapolated station

MD [ft]	Inclination [°]	Azimuth [°]	TVD [ft]	Vert Sect [ft]	North [ft]	East [ft]	Latitude	Longitude	DLS [°/100ft]	Comments
4117.00†	11.000	169.720	4068.30	-514.67	-514.96	93.40	40°02'37.026"N	104°58'17.355"W	0.00	
4217.00†	11.000	169.720	4166.46	-533.43	-533.73	96.80	40°02'36.841"N	104°58'17.311"W	0.00	
4317.00†	11.000	169.720	4264.63	-552.20	-552.51	100.21	40°02'36.655"N	104°58'17.268"W	0.00	
4417.00†	11.000	169.720	4362.79	-570.96	-571.28	103.61	40°02'36.469"N	104°58'17.224"W	0.00	
4517.00†	11.000	169.720	4460.95	-589.73	-590.06	107.02	40°02'36.284"N	104°58'17.180"W	0.00	
4617.00†	11.000	169.720	4559.12	-608.49	-608.83	110.42	40°02'36.098"N	104°58'17.136"W	0.00	
4717.00†	11.000	169.720	4657.28	-627.25	-627.61	113.83	40°02'35.913"N	104°58'17.092"W	0.00	
4790.06†	11.000	169.720	4729.00	-640.96	-641.32	116.32	40°02'35.777"N	104°58'17.060"W	0.00	SUSSEX
4817.00†	11.000	169.720	4755.44	-646.02	-646.38	117.23	40°02'35.727"N	104°58'17.049"W	0.00	
4917.00†	11.000	169.720	4853.60	-664.78	-665.16	120.64	40°02'35.542"N	104°58'17.005"W	0.00	
5017.00†	11.000	169.720	4951.77	-683.55	-683.93	124.04	40°02'35.356"N	104°58'16.961"W	0.00	
5117.00†	11.000	169.720	5049.93	-702.31	-702.70	127.45	40°02'35.171"N	104°58'16.917"W	0.00	
5217.00†	11.000	169.720	5148.09	-721.07	-721.48	130.85	40°02'34.985"N	104°58'16.874"W	0.00	
5317.00†	11.000	169.720	5246.25	-739.84	-740.25	134.26	40°02'34.800"N	104°58'16.830"W	0.00	
5371.75†	11.000	169.720	5300.00	-750.11	-750.53	136.12	40°02'34.698"N	104°58'16.806"W	0.00	SHANNON
5417.00†	11.000	169.720	5344.42	-758.60	-759.03	137.67	40°02'34.614"N	104°58'16.786"W	0.00	
5517.00†	11.000	169.720	5442.58	-777.37	-777.80	141.07	40°02'34.429"N	104°58'16.742"W	0.00	
5617.00†	11.000	169.720	5540.74	-796.13	-796.58	144.48	40°02'34.243"N	104°58'16.698"W	0.00	
5717.00†	11.000	169.720	5638.91	-814.89	-815.35	147.88	40°02'34.057"N	104°58'16.655"W	0.00	
5734.41	11.000	169.720	5656.00	-818.16	-818.62	148.47	40°02'34.025"N	104°58'16.647"W	0.00	BEGIN DROP
5817.00†	9.348	169.720	5737.28	-832.51	-832.98	151.08	40°02'33.883"N	104°58'16.614"W	2.00	
5917.00†	7.348	169.720	5836.22	-846.78	-847.26	153.67	40°02'33.742"N	104°58'16.580"W	2.00	
6017.00†	5.348	169.720	5935.60	-857.66	-858.14	155.64	40°02'33.635"N	104°58'16.555"W	2.00	
6117.00†	3.348	169.720	6035.31	-865.11	-865.60	156.99	40°02'33.561"N	104°58'16.537"W	2.00	
6217.00†	1.348	169.720	6135.22	-869.14	-869.63	157.73	40°02'33.521"N	104°58'16.528"W	2.00	
6284.41	0.000	0.176	6202.63	-869.92	-870.41	157.87	40°02'33.513"N	104°58'16.526"W	2.00	END DROP
6317.00†	0.000	0.176	6235.21	-869.92	-870.41	157.87	40°02'33.513"N	104°58'16.526"W	0.00	
6417.00†	0.000	0.176	6335.21	-869.92	-870.41	157.87	40°02'33.513"N	104°58'16.526"W	0.00	
6517.00†	0.000	0.176	6435.21	-869.92	-870.41	157.87	40°02'33.513"N	104°58'16.526"W	0.00	
6617.00†	0.000	0.176	6535.21	-869.92	-870.41	157.87	40°02'33.513"N	104°58'16.526"W	0.00	
6717.00†	0.000	0.176	6635.21	-869.92	-870.41	157.87	40°02'33.513"N	104°58'16.526"W	0.00	
6817.00†	0.000	0.176	6735.21	-869.92	-870.41	157.87	40°02'33.513"N	104°58'16.526"W	0.00	
6917.00†	0.000	0.176	6835.21	-869.92	-870.41	157.87	40°02'33.513"N	104°58'16.526"W	0.00	
7017.00†	0.000	0.176	6935.21	-869.92	-870.41	157.87	40°02'33.513"N	104°58'16.526"W	0.00	
7117.00†	0.000	0.176	7035.21	-869.92	-870.41	157.87	40°02'33.513"N	104°58'16.526"W	0.00	
7217.00†	0.000	0.176	7135.21	-869.92	-870.41	157.87	40°02'33.513"N	104°58'16.526"W	0.00	
7317.00†	0.000	0.176	7235.21	-869.92	-870.41	157.87	40°02'33.513"N	104°58'16.526"W	0.00	
7417.00†	0.000	0.176	7335.21	-869.92	-870.41	157.87	40°02'33.513"N	104°58'16.526"W	0.00	
7426.82	0.000	0.176	7345.04	-869.92	-870.41	157.87	40°02'33.513"N	104°58'16.526"W	0.00	KOP, BUILD @ 10°/100'
7517.00†	9.018	0.176	7434.84	-862.84	-863.33	157.89	40°02'33.583"N	104°58'16.526"W	10.00	
7579.59†	15.277	0.176	7496.00	-849.68	-850.17	157.93	40°02'33.713"N	104°58'16.525"W	10.00	SHARON SPRINGS
7614.10†	18.728	0.176	7529.00	-839.59	-840.08	157.96	40°02'33.813"N	104°58'16.525"W	10.00	NIOBRARA A
7617.00†	19.018	0.176	7531.74	-838.65	-839.14	157.96	40°02'33.822"N	104°58'16.525"W	10.00	
7717.00†	29.018	0.176	7622.97	-798.00	-798.49	158.09	40°02'34.224"N	104°58'16.523"W	10.00	
7757.91†	33.108	0.176	7658.00	-776.90	-777.39	158.15	40°02'34.433"N	104°58'16.523"W	10.00	NIOBRARA B

REFERENCE WELLPATH IDENTIFICATION

Operator	KERR-MCGEE OIL & GAS ONSHORE LP	Slot	SLOT#22 RANCHVIEW 28C-11HZ (350'FSL & 2299'FWL, SEC.14)
Area	COLORADO	Well	RANCHVIEW 28C-11HZ
Field	WELD COUNTY (KERR MCGEE)	Wellbore	RANCHVIEW 28C-11HZ PWB
Facility	SEC.14-T1N-R68W		

WELLPATH DATA (174 stations) † = interpolated/extrapolated station

MD [ft]	Inclination [°]	Azimuth [°]	TVD [ft]	Vert Sect [ft]	North [ft]	East [ft]	Latitude	Longitude	DLS [°/100ft]	Comments
7817.00†	39.018	0.176	7705.75	-742.13	-742.62	158.26	40°02'34.776"N	104°58'16.521"W	10.00	
7907.08†	48.026	0.176	7771.00	-680.16	-680.65	158.45	40°02'35.389"N	104°58'16.519"W	10.00	NIOBRARA C
7917.00†	49.018	0.176	7777.57	-672.73	-673.22	158.47	40°02'35.462"N	104°58'16.518"W	10.00	
8017.00†	59.018	0.176	7836.25	-591.91	-592.40	158.72	40°02'36.261"N	104°58'16.515"W	10.00	
8117.00†	69.018	0.176	7880.00	-502.13	-502.62	159.00	40°02'37.148"N	104°58'16.512"W	10.00	
8150.25†	72.342	0.176	7891.00	-470.76	-471.25	159.09	40°02'37.458"N	104°58'16.510"W	10.00	FORT HAYS
8217.00†	79.018	0.176	7907.50	-406.12	-406.61	159.29	40°02'38.097"N	104°58'16.508"W	10.00	
8251.11†	82.429	0.176	7913.00	-372.46	-372.95	159.39	40°02'38.429"N	104°58'16.507"W	10.00	CODELL
8317.00†	89.018	0.176	7917.91	-306.79	-307.28	159.59	40°02'39.078"N	104°58'16.504"W	10.00	
8327.37	90.055	0.176	7918.00	-296.42	-296.91	159.63	40°02'39.181"N	104°58'16.504"W	10.00	LANDING POINT
8417.00†	90.055	0.176	7917.91	-206.79	-207.28	159.90	40°02'40.067"N	104°58'16.500"W	0.00	
8517.00†	90.055	0.176	7917.81	-106.79	-107.28	160.21	40°02'41.055"N	104°58'16.496"W	0.00	
8617.00†	90.055	0.176	7917.72	-6.79	-7.28	160.51	40°02'42.043"N	104°58'16.492"W	0.00	
8717.00†	90.055	0.176	7917.62	93.21	92.72	160.82	40°02'43.031"N	104°58'16.488"W	0.00	
8817.00†	90.055	0.176	7917.53	193.21	192.72	161.13	40°02'44.019"N	104°58'16.484"W	0.00	
8917.00†	90.055	0.176	7917.43	293.21	292.72	161.44	40°02'45.008"N	104°58'16.480"W	0.00	
9017.00†	90.055	0.176	7917.34	393.21	392.72	161.74	40°02'45.996"N	104°58'16.476"W	0.00	
9117.00†	90.055	0.176	7917.24	493.21	492.72	162.05	40°02'46.984"N	104°58'16.472"W	0.00	
9217.00†	90.055	0.176	7917.15	593.21	592.71	162.36	40°02'47.972"N	104°58'16.468"W	0.00	
9317.00†	90.055	0.176	7917.05	693.21	692.71	162.66	40°02'48.961"N	104°58'16.464"W	0.00	
9417.00†	90.055	0.176	7916.96	793.21	792.71	162.97	40°02'49.949"N	104°58'16.460"W	0.00	
9517.00†	90.055	0.176	7916.86	893.21	892.71	163.28	40°02'50.937"N	104°58'16.457"W	0.00	
9617.00†	90.055	0.176	7916.77	993.21	992.71	163.58	40°02'51.925"N	104°58'16.453"W	0.00	
9717.00†	90.055	0.176	7916.67	1093.21	1092.71	163.89	40°02'52.913"N	104°58'16.449"W	0.00	
9817.00†	90.055	0.176	7916.58	1193.21	1192.71	164.20	40°02'53.902"N	104°58'16.445"W	0.00	
9917.00†	90.055	0.176	7916.48	1293.21	1292.71	164.50	40°02'54.890"N	104°58'16.441"W	0.00	
10017.00†	90.055	0.176	7916.39	1393.21	1392.71	164.81	40°02'55.878"N	104°58'16.437"W	0.00	
10117.00†	90.055	0.176	7916.29	1493.21	1492.71	165.12	40°02'56.866"N	104°58'16.433"W	0.00	
10217.00†	90.055	0.176	7916.20	1593.21	1592.71	165.42	40°02'57.855"N	104°58'16.429"W	0.00	
10317.00†	90.055	0.176	7916.10	1693.21	1692.71	165.73	40°02'58.843"N	104°58'16.425"W	0.00	
10417.00†	90.055	0.176	7916.00	1793.21	1792.71	166.04	40°02'59.831"N	104°58'16.421"W	0.00	
10517.00†	90.055	0.176	7915.91	1893.21	1892.71	166.34	40°03'00.819"N	104°58'16.417"W	0.00	
10617.00†	90.055	0.176	7915.81	1993.21	1992.71	166.65	40°03'01.807"N	104°58'16.413"W	0.00	
10717.00†	90.055	0.176	7915.72	2093.21	2092.71	166.96	40°03'02.796"N	104°58'16.409"W	0.00	
10817.00†	90.055	0.176	7915.62	2193.21	2192.71	167.26	40°03'03.784"N	104°58'16.405"W	0.00	
10917.00†	90.055	0.176	7915.53	2293.21	2292.71	167.57	40°03'04.772"N	104°58'16.401"W	0.00	
11017.00†	90.055	0.176	7915.43	2393.21	2392.71	167.88	40°03'05.760"N	104°58'16.397"W	0.00	
11117.00†	90.055	0.176	7915.34	2493.21	2492.70	168.19	40°03'06.749"N	104°58'16.393"W	0.00	
11217.00†	90.055	0.176	7915.24	2593.21	2592.70	168.49	40°03'07.737"N	104°58'16.389"W	0.00	
11317.00†	90.055	0.176	7915.15	2693.21	2692.70	168.80	40°03'08.725"N	104°58'16.385"W	0.00	
11417.00†	90.055	0.176	7915.05	2793.21	2792.70	169.11	40°03'09.713"N	104°58'16.381"W	0.00	
11517.00†	90.055	0.176	7914.96	2893.21	2892.70	169.41	40°03'10.701"N	104°58'16.377"W	0.00	
11617.00†	90.055	0.176	7914.86	2993.21	2992.70	169.72	40°03'11.690"N	104°58'16.373"W	0.00	
11717.00†	90.055	0.176	7914.77	3093.21	3092.70	170.03	40°03'12.678"N	104°58'16.370"W	0.00	
11817.00†	90.055	0.176	7914.67	3193.21	3192.70	170.33	40°03'13.666"N	104°58'16.366"W	0.00	

REFERENCE WELLPATH IDENTIFICATION

Operator	KERR-MCGEE OIL & GAS ONSHORE LP	Slot	SLOT#22 RANCHVIEW 28C-11HZ (350'FSL & 2299'FWL, SEC.14)
Area	COLORADO	Well	RANCHVIEW 28C-11HZ
Field	WELD COUNTY (KERR MCGEE)	Wellbore	RANCHVIEW 28C-11HZ PWB
Facility	SEC.14-T1N-R68W		

WELLPATH DATA (174 stations) † = interpolated/extrapolated station

MD [ft]	Inclination [°]	Azimuth [°]	TVD [ft]	Vert Sect [ft]	North [ft]	East [ft]	Latitude	Longitude	DLS [°/100ft]	Comments
11917.00†	90.055	0.176	7914.58	3293.21	3292.70	170.64	40°03'14.654"N	104°58'16.362"W	0.00	
12017.00†	90.055	0.176	7914.48	3393.21	3392.70	170.95	40°03'15.642"N	104°58'16.358"W	0.00	
12117.00†	90.055	0.176	7914.39	3493.21	3492.70	171.25	40°03'16.631"N	104°58'16.354"W	0.00	
12217.00†	90.055	0.176	7914.29	3593.21	3592.70	171.56	40°03'17.619"N	104°58'16.350"W	0.00	
12317.00†	90.055	0.176	7914.20	3693.21	3692.70	171.87	40°03'18.607"N	104°58'16.346"W	0.00	
12417.00†	90.055	0.176	7914.10	3793.21	3792.70	172.17	40°03'19.595"N	104°58'16.342"W	0.00	
12517.00†	90.055	0.176	7914.00	3893.21	3892.70	172.48	40°03'20.584"N	104°58'16.338"W	0.00	
12617.00†	90.055	0.176	7913.91	3993.21	3992.70	172.79	40°03'21.572"N	104°58'16.334"W	0.00	
12717.00†	90.055	0.176	7913.81	4093.21	4092.70	173.09	40°03'22.560"N	104°58'16.330"W	0.00	
12817.00†	90.055	0.176	7913.72	4193.21	4192.70	173.40	40°03'23.548"N	104°58'16.326"W	0.00	
12917.00†	90.055	0.176	7913.62	4293.21	4292.70	173.71	40°03'24.536"N	104°58'16.322"W	0.00	
13017.00†	90.055	0.176	7913.53	4393.21	4392.69	174.01	40°03'25.525"N	104°58'16.318"W	0.00	
13117.00†	90.055	0.176	7913.43	4493.21	4492.69	174.32	40°03'26.513"N	104°58'16.314"W	0.00	
13217.00†	90.055	0.176	7913.34	4593.21	4592.69	174.63	40°03'27.501"N	104°58'16.310"W	0.00	
13317.00†	90.055	0.176	7913.24	4693.21	4692.69	174.94	40°03'28.489"N	104°58'16.306"W	0.00	
13417.00†	90.055	0.176	7913.15	4793.21	4792.69	175.24	40°03'29.478"N	104°58'16.302"W	0.00	
13517.00†	90.055	0.176	7913.05	4893.21	4892.69	175.55	40°03'30.466"N	104°58'16.298"W	0.00	
13617.00†	90.055	0.176	7912.96	4993.21	4992.69	175.86	40°03'31.454"N	104°58'16.294"W	0.00	
13717.00†	90.055	0.176	7912.86	5093.21	5092.69	176.16	40°03'32.442"N	104°58'16.290"W	0.00	
13817.00†	90.055	0.176	7912.77	5193.21	5192.69	176.47	40°03'33.430"N	104°58'16.286"W	0.00	
13917.00†	90.055	0.176	7912.67	5293.21	5292.69	176.78	40°03'34.419"N	104°58'16.283"W	0.00	
14017.00†	90.055	0.176	7912.58	5393.21	5392.69	177.08	40°03'35.407"N	104°58'16.279"W	0.00	
14117.00†	90.055	0.176	7912.48	5493.21	5492.69	177.39	40°03'36.395"N	104°58'16.275"W	0.00	
14217.00†	90.055	0.176	7912.39	5593.21	5592.69	177.70	40°03'37.383"N	104°58'16.271"W	0.00	
14317.00†	90.055	0.176	7912.29	5693.21	5692.69	178.00	40°03'38.371"N	104°58'16.267"W	0.00	
14417.00†	90.055	0.176	7912.20	5793.21	5792.69	178.31	40°03'39.360"N	104°58'16.263"W	0.00	
14517.00†	90.055	0.176	7912.10	5893.21	5892.69	178.62	40°03'40.348"N	104°58'16.259"W	0.00	
14617.00†	90.055	0.176	7912.00	5993.21	5992.69	178.92	40°03'41.336"N	104°58'16.255"W	0.00	
14717.00†	90.055	0.176	7911.91	6093.21	6092.69	179.23	40°03'42.324"N	104°58'16.251"W	0.00	
14817.00†	90.055	0.176	7911.81	6193.21	6192.69	179.54	40°03'43.313"N	104°58'16.247"W	0.00	
14917.00†	90.055	0.176	7911.72	6293.21	6292.69	179.84	40°03'44.301"N	104°58'16.243"W	0.00	
15017.00†	90.055	0.176	7911.62	6393.21	6392.68	180.15	40°03'45.289"N	104°58'16.239"W	0.00	
15117.00†	90.055	0.176	7911.53	6493.21	6492.68	180.46	40°03'46.277"N	104°58'16.235"W	0.00	
15217.00†	90.055	0.176	7911.43	6593.21	6592.68	180.76	40°03'47.265"N	104°58'16.231"W	0.00	
15317.00†	90.055	0.176	7911.34	6693.21	6692.68	181.07	40°03'48.254"N	104°58'16.227"W	0.00	
15417.00†	90.055	0.176	7911.24	6793.21	6792.68	181.38	40°03'49.242"N	104°58'16.223"W	0.00	
15517.00†	90.055	0.176	7911.15	6893.21	6892.68	181.69	40°03'50.230"N	104°58'16.219"W	0.00	
15617.00†	90.055	0.176	7911.05	6993.21	6992.68	181.99	40°03'51.218"N	104°58'16.215"W	0.00	
15671.80	90.055	0.176	7911.00 ¹	7048.01	7047.48	182.16	40°03'51.760"N	104°58'16.213"W	0.00	TOTAL DEPTH

REFERENCE WELLPATH IDENTIFICATION

Operator	KERR-MCGEE OIL & GAS ONSHORE LP	Slot	SLOT#22 RANCHVIEW 28C-11HZ (350'FSL & 2299'FWL, SEC.14)
Area	COLORADO	Well	RANCHVIEW 28C-11HZ
Field	WELD COUNTY (KERR MCGEE)	Wellbore	RANCHVIEW 28C-11HZ PWB
Facility	SEC.14-T1N-R68W		

HOLE & CASING SECTIONS -

Ref Wellbore: RANCHVIEW 28C-11HZ PWB Ref Wellpath: RANCHVIEW 28C-11HZ (PERMIT REV-3) PWP

String/Diameter	Start MD [ft]	End MD [ft]	Interval [ft]	Start TVD [ft]	End TVD [ft]	Start N/S [ft]	Start E/W [ft]	End N/S [ft]	End E/W [ft]
13.5in Open Hole	17.00	1000.00	983.00	17.00	1000.00	0.00	0.00	0.00	0.00
9.625in Casing Surface	17.00	1000.00	983.00	17.00	1000.00	0.00	0.00	0.00	0.00
8.75in Open Hole	1000.00	8327.37	7327.37	1000.00	7918.00	0.00	0.00	-296.91	159.63
7in Casing Intermediate	17.00	8327.37	8310.37	17.00	7918.00	0.00	0.00	-296.91	159.63
6.125in Open Hole	8327.37	15671.80	7344.43	7918.00	7911.00	-296.91	159.63	7047.48	182.16
4.5in Casing Production	17.00	15671.80	15654.80	17.00	7911.00	0.00	0.00	7047.48	182.16

TARGETS

Name	MD [ft]	TVD [ft]	North [ft]	East [ft]	Grid East [US ft]	Grid North [US ft]	Latitude	Longitude	Shape
SEC.11-T1N-R68W SECTION LINES		0.00	-1.11	-60.20	3147812.44	1259689.75	40°02'42.104"N	104°58'19.330"W	polygon
SEC.14-T1N-R68W SECTION LINES		0.00	-1.11	-60.20	3147812.44	1259689.75	40°02'42.104"N	104°58'19.330"W	polygon
RANCHVIEW 28C-11HZ BHL ON PLAT REV-1 (2201'FSL & 2485'FWL, SEC.11)		7911.00	7097.48	207.16	3148037.50	1266789.54	40°03'52.254"N	104°58'15.892"W	point
RANCHVIEW 28C-11HZ BHL REV-2 (2201'FSL & 2460'FWL, SEC.11)		7911.00	7097.48	182.16	3148012.51	1266789.39	40°03'52.254"N	104°58'16.213"W	point
1) RANCHVIEW 28C-11HZ BHL REV-3 (2151'FSL & 2460'FWL, SEC.11)	15671.80	7911.00	7047.48	182.16	3148012.80	1266739.39	40°03'51.760"N	104°58'16.213"W	point

SURVEY PROGRAM - Ref Wellbore: RANCHVIEW 28C-11HZ PWB Ref Wellpath: RANCHVIEW 28C-11HZ (PERMIT REV-3) PWP

Start MD [ft]	End MD [ft]	Positional Uncertainty Model	Log Name/Comment	Wellbore
17.00	15671.80	NaviTrak (MAGCORR,IFR)		RANCHVIEW 28C-11HZ PWB

REFERENCE WELLPATH IDENTIFICATION

Operator	KERR-MCGEE OIL & GAS ONSHORE LP	Slot	SLOT#22 RANCHVIEW 28C-11HZ (350'FSL & 2299'FWL, SEC.14)
Area	COLORADO	Well	RANCHVIEW 28C-11HZ
Field	WELD COUNTY (KERR MCGEE)	Wellbore	RANCHVIEW 28C-11HZ PWB
Facility	SEC.14-T1N-R68W		

WELLPATH COMMENTS

MD [ft]	Inclination [°]	Azimuth [°]	TVD [ft]	Comment
1217.03	2.341	169.720	1217.00	FOX HILLS MARKER
4790.06	11.000	169.720	4729.00	SUSSEX
5371.75	11.000	169.720	5300.00	SHANNON
7579.59	15.277	0.176	7496.00	SHARON SPRINGS
7614.10	18.728	0.176	7529.00	NIOBRARA A
7757.91	33.108	0.176	7658.00	NIOBRARA B
7907.08	48.026	0.176	7771.00	NIOBRARA C
8150.25	72.342	0.176	7891.00	FORT HAYS
8251.11	82.429	0.176	7913.00	CODELL

DESIGN COMMENTS

MD [ft]	Inclination [°]	Azimuth [°]	TVD [ft]	Comment
17.00	0.000	169.720	17.00	TIE ON
1100.00	0.000	169.720	1100.00	BEGIN NUDGE
1650.00	11.000	169.720	1646.63	END NUDGE
5734.41	11.000	169.720	5656.00	BEGIN DROP
6284.41	0.000	0.176	6202.63	END DROP
7426.82	0.000	0.176	7345.04	KOP, BUILD @ 10°/100'
8327.37	90.055	0.176	7918.00	LANDING POINT
15671.80	90.055	0.176	7911.00	TOTAL DEPTH