

Location:	COLORADO	Slot:	SLOT#21 RANCHVIEW 3N-11HZ (350'FSL & 2269'FWL, SEC.14)
Field:	WELD COUNTY (KERR MCGEE)	Well:	RANCHVIEW 3N-11HZ
Facility:	SEC.14-T1N-R68W	Wellbore:	RANCHVIEW 3N-11HZ PWB

Location:	COLORADO	Slot:	SLOT#21 RANCHVIEW 3N-11HZ (350'FSL & 2269'FWL, SEC.14)
Field:	WELD COUNTY (KERR MCGEE)	Well:	RANCHVIEW 3N-11HZ
Facility:	SEC.14-T1N-R68W	Wellbore:	RANCHVIEW 3N-11HZ PWB

Plot reference wellpath is RANCHVIEW 3N-11HZ (PERMIT REV-3) PWP

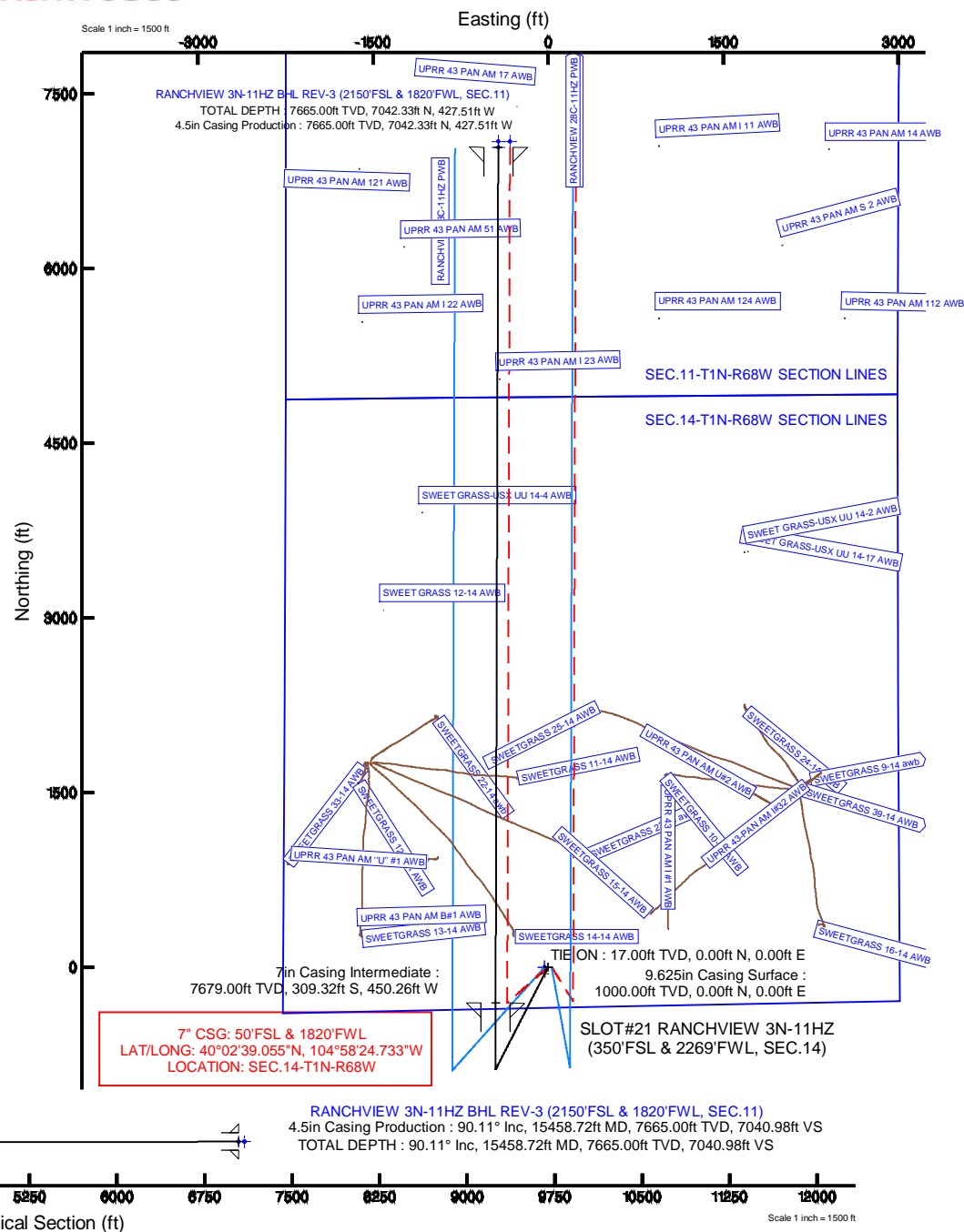
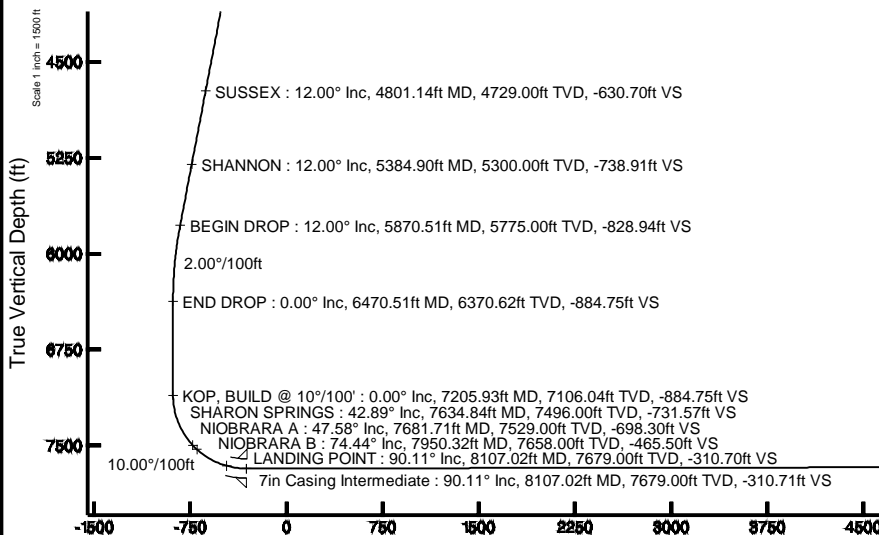
True vertical depths are referenced to PERMIT (17KB) (RKB)	Grid System: NAD83 / Lambert Colorado SP, Northern Zone (501), US feet
Measured depths are referenced to PERMIT (17KB) (RKB)	North Reference: True north
PERMIT (17KB) (RKB) to Mean Sea Level: 5161 feet	Scale: True distance
Mean Sea Level to Mud line (At Slot: SLOTH21 RANCHVIEW 3N-11HZ (350FSL & 2269FWL, SEC.14): 0 feet)	Depths are in feet
Coordinates are in feet referenced to Slot	Created by: robale01 on 02/Apr/2014

Facility Name				Grid East (US ft)	Grid North (US ft)	Latitude	Longitude
SEC. 14-T1N-R68W				3150004.168	1261260.607	40°02'57.498"N	104°57'51.026"W
Slot	Local N (ft)	Local E (ft)	Grid East (US ft)	Grid North (US ft)	Latitude	Longitude	
SLOT#21 RANCHVIEW 3N-11H2 (350FSL & 2269 FWL, SEC.14)	-1556.84	-2171.24	3147842.458	1259690.737	40°02'42.112"N	104°58'18.944"W	
PERMIT (17Kb) (RbB) to Mud line (At Slot: SLOT#21 RANCHVIEW 3N-11H2 (350FSL & 2269 FWL, SEC.14))						5161ft	
Mean Sea Level to Mud line (At Slot: SLOT#21 RANCHVIEW 3N-11H2 (350FSL & 2269 FWL, SEC.14))						0ft	
PERMIT (17Kb) (RbB) to Mean Sea Level						5161ft	

Start MD (ft)	End MD (ft)	Tool	Model	Log Name/Comment	Wellbore
17.00	15458.72	NaviTrak	NaviTrak (MAGCORR,IFR)		RANCHVIEW 3N-11HZ PWB

Name	MD (ft)	TVD (ft)	Local N (ft)	Local E (ft)	Grid East (US ft)	Grid North (US ft)	Latitude	Longitude
SEC-11-TIN-R68W SECTION LINES		0.00	-0.81	-30.02	3147812.44	1256689.75	42°02'42.104"N	104°58'19.330"W
SEC-14-TIN-R68W SECTION LINES		0.00	-0.81	-30.02	3147812.44	1256689.75	42°02'42.104"N	104°58'19.330"W
RANCH-WW-39-11/2-BH-L ON PLAT REV-1 (2205FSL & 1920FWL, SEC-11)	7865.00	7092.33	-427.51	3147472.73	1256780.71	42°03'02.200"N	104°58'23.166"W	
RANCH-WW-39-11/2-BH-L REV-2 (2205FSL & 1920FWL, SEC-11)	7865.00	7092.33	-427.51	3147372.74	1256780.12	42°03'02.200"N	104°58'24.443"W	
RANCH-WW-39-11/2-BH-L REV-3 (2150FSL & 1820FWL, SEC-11)	15452.72	7865.00	7042.33	-427.51	3147370.24	42°03'51.706"N	104°58'24.443"W	

Design Comment	MD (ft)	Inc (°)	Az (°)	TVD (ft)	Local N (ft)	Local E (ft)	DLS (°/100ft)	VS (ft)
TIE ON	17.00	0.000	207.100	17.00	0.00	0.00	0.00	0.00
BEGIN NUDE	1100.00	0.000	207.100	1100.00	0.00	0.00	0.00	0.00
END NUDE	1700.00	12.000	207.100	1695.62	-55.73	-28.52	2.00	-55.82
BEGIN DROP	5870.51	12.000	207.100	5775.00	-827.63	-423.52	0.00	-828.94
END DROP	6470.51	0.000	0.177	6370.62	-883.36	-452.04	2.00	-884.75
KOP, BUILD @ 10"/100'	7205.93	0.000	0.177	7106.04	-883.36	-452.04	0.00	-884.75
LANDING POINT	8107.02	90.109	0.177	7679.00	-309.32	-420.56	10.00	-310.70
TOTAL DEPTH	15458.72	90.109	0.177	7665.00	7042.33	-427.51	0.00	7040.98



REFERENCE WELLPATH IDENTIFICATION			
Operator	KERR-MCGEE OIL & GAS ONSHORE LP	Slot	SLOT#21 RANCHVIEW 3N-11HZ (350'FSL & 2269'FWL, SEC.14)
Area	COLORADO	Well	RANCHVIEW 3N-11HZ
Field	WELD COUNTY (KERR MCGEE)	Wellbore	RANCHVIEW 3N-11HZ PWB
Facility	SEC.14-T1N-R68W		

REPORT SETUP INFORMATION			
Projection System	NAD83 / Lambert Colorado SP, Northern Zone (501), US feet	Software System	WellArchitect® 4.0.0
North Reference	True	User	Robiale01
Scale	0.999963	Report Generated	02/Apr/2014 at 11:48
Convergence at slot	n/a	Database/Source file	WellArchitectDB/RANCHVIEW_3N-11HZ_PWB.xml

WELLPATH LOCATION						
	Local coordinates		Grid coordinates		Geographic coordinates	
	North[ft]	East[ft]	Easting[US ft]	Northing[US ft]	Latitude	Longitude
Slot Location	-1556.84	-2171.24	3147842.46	1259690.74	40°02'42.112"N	104°58'18.944"W
Facility Reference Pt			3150004.17	1261260.61	40°02'57.498"N	104°57'51.026"W
Field Reference Pt			3197771.84	1268891.29	40°04'09.600"N	104°47'36.000"W

WELLPATH DATUM			
Calculation method	Minimum curvature	PERMIT (17'KB) (RKB) to Facility Vertical Datum	5161.00ft
Horizontal Reference Pt	Slot	PERMIT (17'KB) (RKB) to Mean Sea Level	5161.00ft
Vertical Reference Pt	PERMIT (17'KB) (RKB)	PERMIT (17'KB) (RKB) to Mud Line at Slot (SLOT#21 RANCHVIEW 3N-11HZ (350'FSL & 2269'FWL, SEC.14))	5161.00ft
MD Reference Pt	PERMIT (17'KB) (RKB)	Section Origin	N 0.00, E 0.00 ft
Field Vertical Reference	Mean Sea Level	Section Azimuth	0.18°

REFERENCE WELLPATH IDENTIFICATION

Operator	KERR-MCGEE OIL & GAS ONSHORE LP	Slot	SLOT#21 RANCHVIEW 3N-11HZ (350'FSL & 2269'FWL, SEC.14)
Area	COLORADO	Well	RANCHVIEW 3N-11HZ
Field	WELD COUNTY (KERR MCGEE)	Wellbore	RANCHVIEW 3N-11HZ PWB
Facility	SEC.14-T1N-R68W		

WELLPATH DATA (169 stations) † = interpolated/extrapolated station

MD [ft]	Inclination [°]	Azimuth [°]	TVD [ft]	Vert Sect [ft]	North [ft]	East [ft]	Latitude	Longitude	DLS [°/100ft]	Comments
0.00†	0.000	207.100	0.00	0.00	0.00	0.00	40°02'42.112"N	104°58'18.944"W	0.00	
17.00	0.000	207.100	17.00	0.00	0.00	0.00	40°02'42.112"N	104°58'18.944"W	0.00	TIE ON
117.00†	0.000	207.100	117.00	0.00	0.00	0.00	40°02'42.112"N	104°58'18.944"W	0.00	
217.00†	0.000	207.100	217.00	0.00	0.00	0.00	40°02'42.112"N	104°58'18.944"W	0.00	
317.00†	0.000	207.100	317.00	0.00	0.00	0.00	40°02'42.112"N	104°58'18.944"W	0.00	
417.00†	0.000	207.100	417.00	0.00	0.00	0.00	40°02'42.112"N	104°58'18.944"W	0.00	
517.00†	0.000	207.100	517.00	0.00	0.00	0.00	40°02'42.112"N	104°58'18.944"W	0.00	
617.00†	0.000	207.100	617.00	0.00	0.00	0.00	40°02'42.112"N	104°58'18.944"W	0.00	
717.00†	0.000	207.100	717.00	0.00	0.00	0.00	40°02'42.112"N	104°58'18.944"W	0.00	
817.00†	0.000	207.100	817.00	0.00	0.00	0.00	40°02'42.112"N	104°58'18.944"W	0.00	
917.00†	0.000	207.100	917.00	0.00	0.00	0.00	40°02'42.112"N	104°58'18.944"W	0.00	
1017.00†	0.000	207.100	1017.00	0.00	0.00	0.00	40°02'42.112"N	104°58'18.944"W	0.00	
1100.00	0.000	207.100	1100.00	0.00	0.00	0.00	40°02'42.112"N	104°58'18.944"W	0.00	BEGIN NUDGE
1117.00†	0.340	207.100	1117.00	-0.04	-0.04	-0.02	40°02'42.112"N	104°58'18.944"W	2.00	
1217.00†	2.340	207.100	1216.97	-2.13	-2.13	-1.09	40°02'42.091"N	104°58'18.958"W	2.00	
1217.03†	2.341	207.100	1217.00	-2.13	-2.13	-1.09	40°02'42.091"N	104°58'18.958"W	2.00	FOX HILLS MARKER
1317.00†	4.340	207.100	1316.79	-7.32	-7.31	-3.74	40°02'42.040"N	104°58'18.992"W	2.00	
1417.00†	6.340	207.100	1416.35	-15.62	-15.60	-7.98	40°02'41.958"N	104°58'19.047"W	2.00	
1517.00†	8.340	207.100	1515.53	-27.01	-26.97	-13.80	40°02'41.845"N	104°58'19.121"W	2.00	
1617.00†	10.340	207.100	1614.20	-41.48	-41.42	-21.19	40°02'41.703"N	104°58'19.217"W	2.00	
1700.00	12.000	207.100	1695.62	-55.82	-55.73	-28.52	40°02'41.561"N	104°58'19.311"W	2.00	END NUDGE
1717.00†	12.000	207.100	1712.25	-58.97	-58.88	-30.13	40°02'41.530"N	104°58'19.331"W	0.00	
1817.00†	12.000	207.100	1810.07	-77.51	-77.38	-39.60	40°02'41.347"N	104°58'19.453"W	0.00	
1917.00†	12.000	207.100	1907.88	-96.04	-95.89	-49.07	40°02'41.164"N	104°58'19.575"W	0.00	
2017.00†	12.000	207.100	2005.70	-114.58	-114.40	-58.54	40°02'40.981"N	104°58'19.697"W	0.00	
2117.00†	12.000	207.100	2103.51	-133.12	-132.91	-68.01	40°02'40.799"N	104°58'19.819"W	0.00	
2217.00†	12.000	207.100	2201.33	-151.66	-151.42	-77.48	40°02'40.616"N	104°58'19.940"W	0.00	
2317.00†	12.000	207.100	2299.14	-170.20	-169.93	-86.96	40°02'40.433"N	104°58'20.062"W	0.00	
2417.00†	12.000	207.100	2396.95	-188.73	-188.44	-96.43	40°02'40.250"N	104°58'20.184"W	0.00	
2517.00†	12.000	207.100	2494.77	-207.27	-206.94	-105.90	40°02'40.067"N	104°58'20.306"W	0.00	
2617.00†	12.000	207.100	2592.58	-225.81	-225.45	-115.37	40°02'39.884"N	104°58'20.427"W	0.00	
2717.00†	12.000	207.100	2690.40	-244.35	-243.96	-124.84	40°02'39.701"N	104°58'20.549"W	0.00	
2817.00†	12.000	207.100	2788.21	-262.88	-262.47	-134.31	40°02'39.518"N	104°58'20.671"W	0.00	
2917.00†	12.000	207.100	2886.03	-281.42	-280.98	-143.78	40°02'39.335"N	104°58'20.793"W	0.00	
3017.00†	12.000	207.100	2983.84	-299.96	-299.49	-153.26	40°02'39.152"N	104°58'20.915"W	0.00	
3117.00†	12.000	207.100	3081.66	-318.50	-318.00	-162.73	40°02'38.969"N	104°58'21.036"W	0.00	
3217.00†	12.000	207.100	3179.47	-337.03	-336.50	-172.20	40°02'38.787"N	104°58'21.158"W	0.00	
3317.00†	12.000	207.100	3277.29	-355.57	-355.01	-181.67	40°02'38.604"N	104°58'21.280"W	0.00	
3417.00†	12.000	207.100	3375.10	-374.11	-373.52	-191.14	40°02'38.421"N	104°58'21.402"W	0.00	
3517.00†	12.000	207.100	3472.92	-392.65	-392.03	-200.61	40°02'38.238"N	104°58'21.523"W	0.00	
3617.00†	12.000	207.100	3570.73	-411.19	-410.54	-210.08	40°02'38.055"N	104°58'21.645"W	0.00	
3717.00†	12.000	207.100	3668.55	-429.72	-429.05	-219.55	40°02'37.872"N	104°58'21.767"W	0.00	
3817.00†	12.000	207.100	3766.36	-448.26	-447.56	-229.03	40°02'37.689"N	104°58'21.889"W	0.00	
3917.00†	12.000	207.100	3864.18	-466.80	-466.06	-238.50	40°02'37.506"N	104°58'22.011"W	0.00	
4017.00†	12.000	207.100	3961.99	-485.34	-484.57	-247.97	40°02'37.323"N	104°58'22.132"W	0.00	

REFERENCE WELLPATH IDENTIFICATION

Operator	KERR-MCGEE OIL & GAS ONSHORE LP	Slot	SLOT#21 RANCHVIEW 3N-11HZ (350'FSL & 2269'FWL, SEC.14)
Area	COLORADO	Well	RANCHVIEW 3N-11HZ
Field	WELD COUNTY (KERR MCGEE)	Wellbore	RANCHVIEW 3N-11HZ PWB
Facility	SEC.14-T1N-R68W		

WELLPATH DATA (169 stations) † = interpolated/extrapolated station

MD [ft]	Inclination [°]	Azimuth [°]	TVD [ft]	Vert Sect [ft]	North [ft]	East [ft]	Latitude	Longitude	DLS [°/100ft]	Comments
4117.00†	12.000	207.100	4059.81	-503.87	-503.08	-257.44	40°02'37.140"N	104°58'22.254"W	0.00	
4217.00†	12.000	207.100	4157.62	-522.41	-521.59	-266.91	40°02'36.958"N	104°58'22.376"W	0.00	
4317.00†	12.000	207.100	4255.44	-540.95	-540.10	-276.38	40°02'36.775"N	104°58'22.498"W	0.00	
4417.00†	12.000	207.100	4353.25	-559.49	-558.61	-285.85	40°02'36.592"N	104°58'22.619"W	0.00	
4517.00†	12.000	207.100	4451.06	-578.03	-577.12	-295.33	40°02'36.409"N	104°58'22.741"W	0.00	
4617.00†	12.000	207.100	4548.88	-596.56	-595.62	-304.80	40°02'36.226"N	104°58'22.863"W	0.00	
4717.00†	12.000	207.100	4646.69	-615.10	-614.13	-314.27	40°02'36.043"N	104°58'22.985"W	0.00	
4801.14†	12.000	207.100	4729.00	-630.70	-629.71	-322.24	40°02'35.889"N	104°58'23.087"W	0.00	SUSSEX
4817.00†	12.000	207.100	4744.51	-633.64	-632.64	-323.74	40°02'35.860"N	104°58'23.107"W	0.00	
4917.00†	12.000	207.100	4842.32	-652.18	-651.15	-333.21	40°02'35.677"N	104°58'23.228"W	0.00	
5017.00†	12.000	207.100	4940.14	-670.71	-669.66	-342.68	40°02'35.494"N	104°58'23.350"W	0.00	
5117.00†	12.000	207.100	5037.95	-689.25	-688.17	-352.15	40°02'35.311"N	104°58'23.472"W	0.00	
5217.00†	12.000	207.100	5135.77	-707.79	-706.68	-361.62	40°02'35.128"N	104°58'23.594"W	0.00	
5317.00†	12.000	207.100	5233.58	-726.33	-725.18	-371.10	40°02'34.946"N	104°58'23.715"W	0.00	
5384.90†	12.000	207.100	5300.00	-738.91	-737.75	-377.53	40°02'34.821"N	104°58'23.798"W	0.00	SHANNON
5417.00†	12.000	207.100	5331.40	-744.87	-743.69	-380.57	40°02'34.763"N	104°58'23.837"W	0.00	
5517.00†	12.000	207.100	5429.21	-763.40	-762.20	-390.04	40°02'34.580"N	104°58'23.959"W	0.00	
5617.00†	12.000	207.100	5527.03	-781.94	-780.71	-399.51	40°02'34.397"N	104°58'24.081"W	0.00	
5717.00†	12.000	207.100	5624.84	-800.48	-799.22	-408.98	40°02'34.214"N	104°58'24.203"W	0.00	
5817.00†	12.000	207.100	5722.66	-819.02	-817.73	-418.45	40°02'34.031"N	104°58'24.324"W	0.00	
5870.51	12.000	207.100	5775.00	-828.94	-827.63	-423.52	40°02'33.933"N	104°58'24.389"W	0.00	BEGIN DROP
5917.00†	11.070	207.100	5820.55	-837.22	-835.91	-427.76	40°02'33.851"N	104°58'24.444"W	2.00	
6017.00†	9.070	207.100	5919.00	-852.81	-851.47	-435.72	40°02'33.698"N	104°58'24.546"W	2.00	
6117.00†	7.070	207.100	6018.01	-865.33	-863.97	-442.12	40°02'33.574"N	104°58'24.629"W	2.00	
6217.00†	5.070	207.100	6117.44	-874.76	-873.38	-446.93	40°02'33.481"N	104°58'24.690"W	2.00	
6317.00†	3.070	207.100	6217.18	-881.09	-879.70	-450.17	40°02'33.419"N	104°58'24.732"W	2.00	
6417.00†	1.070	207.100	6317.11	-884.31	-882.92	-451.81	40°02'33.387"N	104°58'24.753"W	2.00	
6470.51	0.000	0.177	6370.62	-884.75	-883.36	-452.04	40°02'33.382"N	104°58'24.756"W	2.00	END DROP
6517.00†	0.000	0.177	6417.11	-884.75	-883.36	-452.04	40°02'33.382"N	104°58'24.756"W	0.00	
6617.00†	0.000	0.177	6517.11	-884.75	-883.36	-452.04	40°02'33.382"N	104°58'24.756"W	0.00	
6717.00†	0.000	0.177	6617.11	-884.75	-883.36	-452.04	40°02'33.382"N	104°58'24.756"W	0.00	
6817.00†	0.000	0.177	6717.11	-884.75	-883.36	-452.04	40°02'33.382"N	104°58'24.756"W	0.00	
6917.00†	0.000	0.177	6817.11	-884.75	-883.36	-452.04	40°02'33.382"N	104°58'24.756"W	0.00	
7017.00†	0.000	0.177	6917.11	-884.75	-883.36	-452.04	40°02'33.382"N	104°58'24.756"W	0.00	
7117.00†	0.000	0.177	7017.11	-884.75	-883.36	-452.04	40°02'33.382"N	104°58'24.756"W	0.00	
7205.93	0.000	0.177	7106.04	-884.75	-883.36	-452.04	40°02'33.382"N	104°58'24.756"W	0.00	KOP, BUILD @ 10°/100'
7217.00†	1.107	0.177	7117.11	-884.65	-883.25	-452.04	40°02'33.383"N	104°58'24.756"W	10.00	
7317.00†	11.107	0.177	7216.42	-874.02	-872.63	-452.01	40°02'33.488"N	104°58'24.756"W	10.00	
7417.00†	21.107	0.177	7312.37	-846.31	-844.92	-451.92	40°02'33.762"N	104°58'24.755"W	10.00	
7517.00†	31.107	0.177	7402.05	-802.37	-800.97	-451.78	40°02'34.197"N	104°58'24.753"W	10.00	
7617.00†	41.107	0.177	7482.74	-743.51	-742.12	-451.60	40°02'34.778"N	104°58'24.751"W	10.00	
7634.84†	42.891	0.177	7496.00	-731.57	-730.18	-451.56	40°02'34.896"N	104°58'24.750"W	10.00	SHARON SPRINGS
7681.71†	47.578	0.177	7529.00	-698.30	-696.91	-451.46	40°02'35.225"N	104°58'24.749"W	10.00	NIOBRARA A
7717.00†	51.107	0.177	7551.99	-671.54	-670.15	-451.38	40°02'35.489"N	104°58'24.748"W	10.00	
7817.00†	61.107	0.177	7607.68	-588.64	-587.25	-451.12	40°02'36.309"N	104°58'24.744"W	10.00	

REFERENCE WELLPATH IDENTIFICATION

Operator	KERR-MCGEE OIL & GAS ONSHORE LP	Slot	SLOT#21 RANCHVIEW 3N-11HZ (350'FSL & 2269'FWL, SEC.14)
Area	COLORADO	Well	RANCHVIEW 3N-11HZ
Field	WELD COUNTY (KERR MCGEE)	Wellbore	RANCHVIEW 3N-11HZ PWB
Facility	SEC.14-T1N-R68W		

WELLPATH DATA (169 stations) † = interpolated/extrapolated station

MD [ft]	Inclination [°]	Azimuth [°]	TVD [ft]	Vert Sect [ft]	North [ft]	East [ft]	Latitude	Longitude	DLS [°/100ft]	Comments
7917.00†	71.107	0.177	7648.13	-497.32	-495.93	-450.84	40°02'37.211"N	104°58'24.741"W	10.00	
7950.32†	74.439	0.177	7658.00	-465.50	-464.11	-450.74	40°02'37.525"N	104°58'24.740"W	10.00	NIOBRARA B
8017.00†	81.107	0.177	7672.11	-400.37	-398.98	-450.54	40°02'38.169"N	104°58'24.737"W	10.00	
8107.02	90.109	0.177	7679.00	-310.70	-309.32	-450.26	40°02'39.055"N	104°58'24.733"W	10.00	LANDING POINT
8117.00†	90.109	0.177	7678.98	-300.73	-299.34	-450.23	40°02'39.154"N	104°58'24.733"W	0.00	
8217.00†	90.109	0.177	7678.79	-200.73	-199.34	-449.92	40°02'40.142"N	104°58'24.729"W	0.00	
8317.00†	90.109	0.177	7678.60	-100.73	-99.34	-449.61	40°02'41.130"N	104°58'24.725"W	0.00	
8417.00†	90.109	0.177	7678.41	-0.73	0.66	-449.30	40°02'42.118"N	104°58'24.721"W	0.00	
8517.00†	90.109	0.177	7678.22	99.27	100.66	-448.99	40°02'43.107"N	104°58'24.717"W	0.00	
8617.00†	90.109	0.177	7678.03	199.27	200.66	-448.68	40°02'44.095"N	104°58'24.713"W	0.00	
8717.00†	90.109	0.177	7677.84	299.27	300.66	-448.37	40°02'45.083"N	104°58'24.709"W	0.00	
8817.00†	90.109	0.177	7677.65	399.27	400.66	-448.06	40°02'46.071"N	104°58'24.705"W	0.00	
8917.00†	90.109	0.177	7677.46	499.27	500.66	-447.76	40°02'47.060"N	104°58'24.701"W	0.00	
9017.00†	90.109	0.177	7677.27	599.27	600.66	-447.45	40°02'48.048"N	104°58'24.697"W	0.00	
9117.00†	90.109	0.177	7677.08	699.27	700.65	-447.14	40°02'49.036"N	104°58'24.693"W	0.00	
9217.00†	90.109	0.177	7676.89	799.27	800.65	-446.83	40°02'50.024"N	104°58'24.690"W	0.00	
9317.00†	90.109	0.177	7676.70	899.27	900.65	-446.52	40°02'51.012"N	104°58'24.686"W	0.00	
9417.00†	90.109	0.177	7676.51	999.27	1000.65	-446.21	40°02'52.001"N	104°58'24.682"W	0.00	
9517.00†	90.109	0.177	7676.31	1099.27	1100.65	-445.90	40°02'52.989"N	104°58'24.678"W	0.00	
9617.00†	90.109	0.177	7676.12	1199.27	1200.65	-445.59	40°02'53.977"N	104°58'24.674"W	0.00	
9717.00†	90.109	0.177	7675.93	1299.27	1300.65	-445.28	40°02'54.965"N	104°58'24.670"W	0.00	
9817.00†	90.109	0.177	7675.74	1399.27	1400.65	-444.97	40°02'55.954"N	104°58'24.666"W	0.00	
9917.00†	90.109	0.177	7675.55	1499.27	1500.65	-444.66	40°02'56.942"N	104°58'24.662"W	0.00	
10017.00†	90.109	0.177	7675.36	1599.27	1600.65	-444.35	40°02'57.930"N	104°58'24.658"W	0.00	
10117.00†	90.109	0.177	7675.17	1699.27	1700.65	-444.04	40°02'58.918"N	104°58'24.654"W	0.00	
10217.00†	90.109	0.177	7674.98	1799.27	1800.65	-443.73	40°02'59.906"N	104°58'24.650"W	0.00	
10317.00†	90.109	0.177	7674.79	1899.27	1900.65	-443.42	40°03'00.895"N	104°58'24.646"W	0.00	
10417.00†	90.109	0.177	7674.60	1999.27	2000.65	-443.11	40°03'01.883"N	104°58'24.642"W	0.00	
10517.00†	90.109	0.177	7674.41	2099.27	2100.65	-442.80	40°03'02.871"N	104°58'24.638"W	0.00	
10617.00†	90.109	0.177	7674.22	2199.27	2200.64	-442.49	40°03'03.859"N	104°58'24.634"W	0.00	
10717.00†	90.109	0.177	7674.03	2299.27	2300.64	-442.18	40°03'04.847"N	104°58'24.630"W	0.00	
10817.00†	90.109	0.177	7673.84	2399.27	2400.64	-441.88	40°03'05.836"N	104°58'24.626"W	0.00	
10917.00†	90.109	0.177	7673.65	2499.27	2500.64	-441.57	40°03'06.824"N	104°58'24.622"W	0.00	
11017.00†	90.109	0.177	7673.46	2599.27	2600.64	-441.26	40°03'07.812"N	104°58'24.618"W	0.00	
11117.00†	90.109	0.177	7673.27	2699.27	2700.64	-440.95	40°03'08.800"N	104°58'24.614"W	0.00	
11217.00†	90.109	0.177	7673.08	2799.27	2800.64	-440.64	40°03'09.789"N	104°58'24.610"W	0.00	
11317.00†	90.109	0.177	7672.89	2899.27	2900.64	-440.33	40°03'10.777"N	104°58'24.606"W	0.00	
11417.00†	90.109	0.177	7672.70	2999.27	3000.64	-440.02	40°03'11.765"N	104°58'24.602"W	0.00	
11517.00†	90.109	0.177	7672.51	3099.27	3100.64	-439.71	40°03'12.753"N	104°58'24.599"W	0.00	
11617.00†	90.109	0.177	7672.32	3199.27	3200.64	-439.40	40°03'13.741"N	104°58'24.595"W	0.00	
11717.00†	90.109	0.177	7672.13	3299.27	3300.64	-439.09	40°03'14.730"N	104°58'24.591"W	0.00	
11817.00†	90.109	0.177	7671.93	3399.27	3400.64	-438.78	40°03'15.718"N	104°58'24.587"W	0.00	
11917.00†	90.109	0.177	7671.74	3499.26	3500.64	-438.47	40°03'16.706"N	104°58'24.583"W	0.00	
12017.00†	90.109	0.177	7671.55	3599.26	3600.64	-438.16	40°03'17.694"N	104°58'24.579"W	0.00	
12117.00†	90.109	0.177	7671.36	3699.26	3700.63	-437.85	40°03'18.683"N	104°58'24.575"W	0.00	

REFERENCE WELLPATH IDENTIFICATION			
Operator	KERR-MCGEE OIL & GAS ONSHORE LP	Slot	SLOT#21 RANCHVIEW 3N-11HZ (350'FSL & 2269'FWL, SEC.14)
Area	COLORADO	Well	RANCHVIEW 3N-11HZ
Field	WELD COUNTY (KERR MCGEE)	Wellbore	RANCHVIEW 3N-11HZ PWB
Facility	SEC.14-T1N-R68W		

WELLPATH DATA (169 stations) † = interpolated/extrapolated station										
MD [ft]	Inclination [°]	Azimuth [°]	TVD [ft]	Vert Sect [ft]	North [ft]	East [ft]	Latitude	Longitude	DLS [°/100ft]	Comments
12217.00†	90.109	0.177	7671.17	3799.26	3800.63	-437.54	40°03'19.671"N	104°58'24.571"W	0.00	
12317.00†	90.109	0.177	7670.98	3899.26	3900.63	-437.23	40°03'20.659"N	104°58'24.567"W	0.00	
12417.00†	90.109	0.177	7670.79	3999.26	4000.63	-436.92	40°03'21.647"N	104°58'24.563"W	0.00	
12517.00†	90.109	0.177	7670.60	4099.26	4100.63	-436.61	40°03'22.635"N	104°58'24.559"W	0.00	
12617.00†	90.109	0.177	7670.41	4199.26	4200.63	-436.30	40°03'23.624"N	104°58'24.555"W	0.00	
12717.00†	90.109	0.177	7670.22	4299.26	4300.63	-436.00	40°03'24.612"N	104°58'24.551"W	0.00	
12817.00†	90.109	0.177	7670.03	4399.26	4400.63	-435.69	40°03'25.600"N	104°58'24.547"W	0.00	
12917.00†	90.109	0.177	7669.84	4499.26	4500.63	-435.38	40°03'26.588"N	104°58'24.543"W	0.00	
13017.00†	90.109	0.177	7669.65	4599.26	4600.63	-435.07	40°03'27.576"N	104°58'24.539"W	0.00	
13117.00†	90.109	0.177	7669.46	4699.26	4700.63	-434.76	40°03'28.565"N	104°58'24.535"W	0.00	
13217.00†	90.109	0.177	7669.27	4799.26	4800.63	-434.45	40°03'29.553"N	104°58'24.531"W	0.00	
13317.00†	90.109	0.177	7669.08	4899.26	4900.63	-434.14	40°03'30.541"N	104°58'24.527"W	0.00	
13417.00†	90.109	0.177	7668.89	4999.26	5000.63	-433.83	40°03'31.529"N	104°58'24.523"W	0.00	
13517.00†	90.109	0.177	7668.70	5099.26	5100.63	-433.52	40°03'32.518"N	104°58'24.519"W	0.00	
13617.00†	90.109	0.177	7668.51	5199.26	5200.62	-433.21	40°03'33.506"N	104°58'24.515"W	0.00	
13717.00†	90.109	0.177	7668.32	5299.26	5300.62	-432.90	40°03'34.494"N	104°58'24.511"W	0.00	
13817.00†	90.109	0.177	7668.13	5399.26	5400.62	-432.59	40°03'35.482"N	104°58'24.508"W	0.00	
13917.00†	90.109	0.177	7667.94	5499.26	5500.62	-432.28	40°03'36.470"N	104°58'24.504"W	0.00	
14017.00†	90.109	0.177	7667.75	5599.26	5600.62	-431.97	40°03'37.459"N	104°58'24.500"W	0.00	
14117.00†	90.109	0.177	7667.56	5699.26	5700.62	-431.66	40°03'38.447"N	104°58'24.496"W	0.00	
14217.00†	90.109	0.177	7667.36	5799.26	5800.62	-431.35	40°03'39.435"N	104°58'24.492"W	0.00	
14317.00†	90.109	0.177	7667.17	5899.26	5900.62	-431.04	40°03'40.423"N	104°58'24.488"W	0.00	
14417.00†	90.109	0.177	7666.98	5999.26	6000.62	-430.73	40°03'41.412"N	104°58'24.484"W	0.00	
14517.00†	90.109	0.177	7666.79	6099.26	6100.62	-430.42	40°03'42.400"N	104°58'24.480"W	0.00	
14617.00†	90.109	0.177	7666.60	6199.26	6200.62	-430.11	40°03'43.388"N	104°58'24.476"W	0.00	
14717.00†	90.109	0.177	7666.41	6299.26	6300.62	-429.81	40°03'44.376"N	104°58'24.472"W	0.00	
14817.00†	90.109	0.177	7666.22	6399.26	6400.62	-429.50	40°03'45.364"N	104°58'24.468"W	0.00	
14917.00†	90.109	0.177	7666.03	6499.26	6500.62	-429.19	40°03'46.353"N	104°58'24.464"W	0.00	
15017.00†	90.109	0.177	7665.84	6599.26	6600.62	-428.88	40°03'47.341"N	104°58'24.460"W	0.00	
15117.00†	90.109	0.177	7665.65	6699.26	6700.62	-428.57	40°03'48.329"N	104°58'24.456"W	0.00	
15217.00†	90.109	0.177	7665.46	6799.26	6800.61	-428.26	40°03'49.317"N	104°58'24.452"W	0.00	
15317.00†	90.109	0.177	7665.27	6899.26	6900.61	-427.95	40°03'50.305"N	104°58'24.448"W	0.00	
15417.00†	90.109	0.177	7665.08	6999.26	7000.61	-427.64	40°03'51.294"N	104°58'24.444"W	0.00	
15458.72	90.109	0.177	7665.00 [†]	7040.98	7042.33	-427.51	40°03'51.706"N	104°58'24.443"W	0.00	TOTAL DEPTH

REFERENCE WELLPATH IDENTIFICATION			
Operator	KERR-MCGEE OIL & GAS ONSHORE LP	Slot	SLOT#21 RANCHVIEW 3N-11HZ (350'FSL & 2269'FWL, SEC.14)
Area	COLORADO	Well	RANCHVIEW 3N-11HZ
Field	WELD COUNTY (KERR MCGEE)	Wellbore	RANCHVIEW 3N-11HZ PWB
Facility	SEC.14-T1N-R68W		

HOLE & CASING SECTIONS -									
Ref Wellbore: RANCHVIEW 3N-11HZ PWB				Ref Wellpath: RANCHVIEW 3N-11HZ (PERMIT REV-3) PWP					
String/Diameter	Start MD [ft]	End MD [ft]	Interval [ft]	Start TVD [ft]	End TVD [ft]	Start N/S [ft]	Start E/W [ft]	End N/S [ft]	End E/W [ft]
13.5in Open Hole	17.00	1000.00	983.00	17.00	1000.00	0.00	0.00	0.00	0.00
9.625in Casing Surface	17.00	1000.00	983.00	17.00	1000.00	0.00	0.00	0.00	0.00
8.75in Open Hole	1000.00	8107.02	7107.02	1000.00	7679.00	0.00	0.00	-309.32	-450.26
7in Casing Intermediate	17.00	8107.02	8090.02	17.00	7679.00	0.00	0.00	-309.32	-450.26
6.125in Open Hole	8107.02	15458.72	7351.70	7679.00	7665.00	-309.32	-450.26	7042.33	-427.51
4.5in Casing Production	17.00	15458.72	15441.72	17.00	7665.00	0.00	0.00	7042.33	-427.51

TARGETS									
Name	MD [ft]	TVD [ft]	North [ft]	East [ft]	Grid East [US ft]	Grid North [US ft]	Latitude	Longitude	Shape
SEC.11-T1N-R68W SECTION LINES		0.00	-0.81	-30.02	3147812.44	1259689.75	40°02'42.104"N	104°58'19.330"W	polygon
SEC.14-T1N-R68W SECTION LINES		0.00	-0.81	-30.02	3147812.44	1259689.75	40°02'42.104"N	104°58'19.330"W	polygon
RANCHVIEW 3N-11HZ BHL ON PLAT REV-1 (2200'FSL & 1920'FWL, SEC.11)		7665.00	7092.33	-327.51	3147472.73	1266780.71	40°03'52.200"N	104°58'23.156"W	point
RANCHVIEW 3N-11HZ BHL REV-2 (2200'FSL & 1820'FWL, SEC.11)		7665.00	7092.33	-427.51	3147372.74	1266780.12	40°03'52.200"N	104°58'24.443"W	point
1) RANCHVIEW 3N-11HZ BHL REV-3 (2150'FSL & 1820'FWL, SEC.11)	15458.72	7665.00	7042.33	-427.51	3147373.04	1266730.12	40°03'51.706"N	104°58'24.443"W	point

SURVEY PROGRAM - Ref Wellbore: RANCHVIEW 3N-11HZ PWB					Ref Wellpath: RANCHVIEW 3N-11HZ (PERMIT REV-3) PWP	
Start MD [ft]	End MD [ft]	Positional Uncertainty Model		Log Name/Comment		Wellbore
17.00	15458.72	NaviTrak (MAGCORR,IFR)				RANCHVIEW 3N-11HZ PWB

REFERENCE WELLPATH IDENTIFICATION			
Operator	KERR-MCGEE OIL & GAS ONSHORE LP	Slot	SLOT#21 RANCHVIEW 3N-11HZ (350'FSL & 2269'FWL, SEC.14)
Area	COLORADO	Well	RANCHVIEW 3N-11HZ
Field	WELD COUNTY (KERR MCGEE)	Wellbore	RANCHVIEW 3N-11HZ PWB
Facility	SEC.14-T1N-R68W		

WELLPATH COMMENTS				
MD [ft]	Inclination [°]	Azimuth [°]	TVD [ft]	Comment
1217.03	2.341	207.100	1217.00	FOX HILLS MARKER
4801.14	12.000	207.100	4729.00	SUSSEX
5384.90	12.000	207.100	5300.00	SHANNON
7634.84	42.891	0.177	7496.00	SHARON SPRINGS
7681.71	47.578	0.177	7529.00	NIOBRARA A
7950.32	74.439	0.177	7658.00	NIOBRARA B

DESIGN COMMENTS				
MD [ft]	Inclination [°]	Azimuth [°]	TVD [ft]	Comment
17.00	0.000	207.100	17.00	TIE ON
1100.00	0.000	207.100	1100.00	BEGIN NUDGE
1700.00	12.000	207.100	1695.62	END NUDGE
5870.51	12.000	207.100	5775.00	BEGIN DROP
6470.51	0.000	0.177	6370.62	END DROP
7205.93	0.000	0.177	7106.04	KOP, BUILD @ 10°/100'
8107.02	90.109	0.177	7679.00	LANDING POINT
15458.72	90.109	0.177	7665.00	TOTAL DEPTH