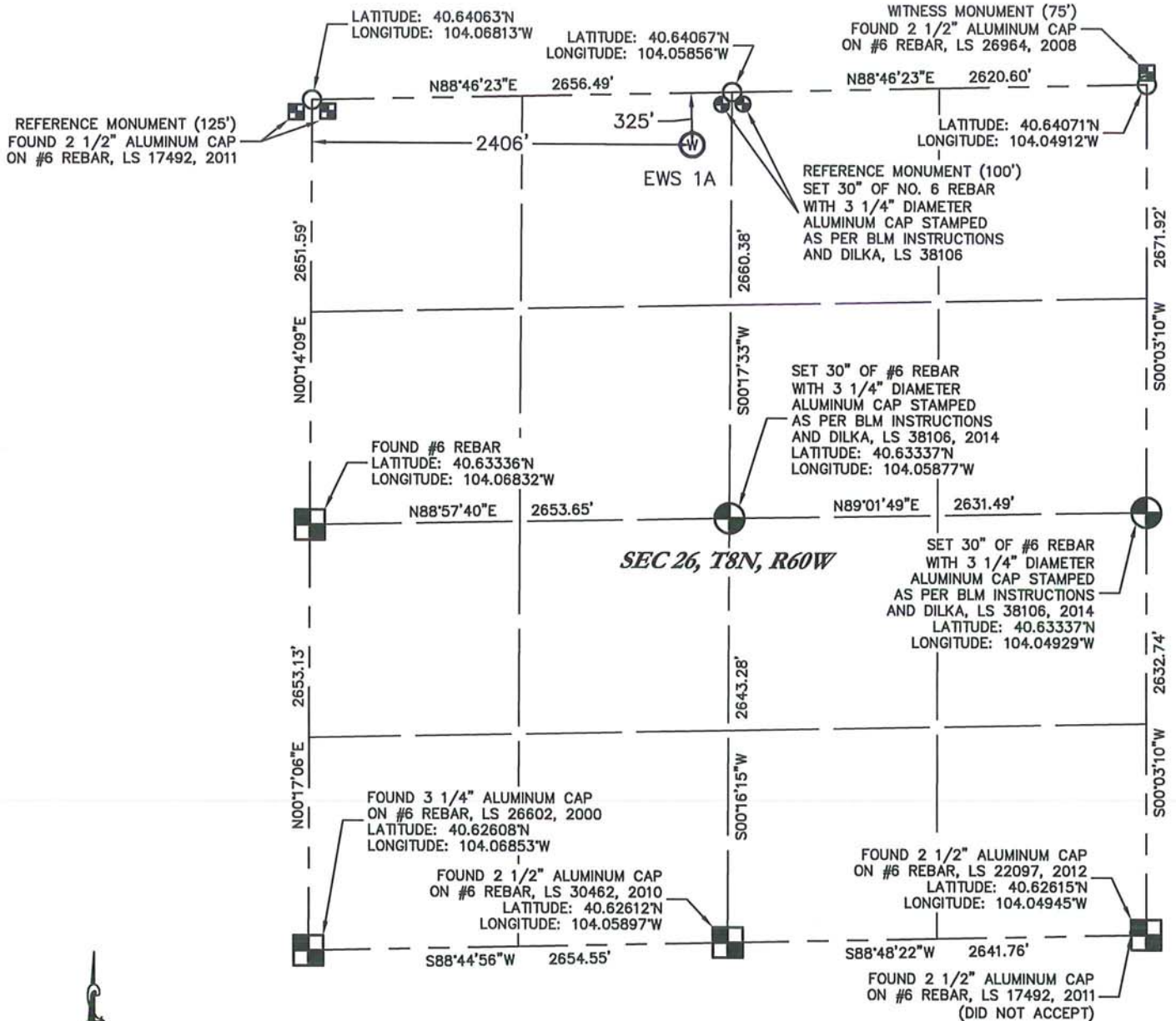


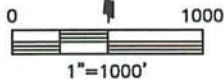
WELL LOCATION CERTIFICATE

EWS 1A

THIS MAP DOES NOT REPRESENT A BOUNDARY SURVEY

SECTION: 26
TOWNSHIP: 8N
RANGE: 60W

In accordance with a request from Jim Goddard for EXPEDITION WATER SOLUTIONS, King Surveyors has determined the surface location of EWS 1A to be 325' from the NORTH line and 2406' from the WEST line, as measured at right angles, from the section lines of Section 26, Township 8 North, Range 60 West of the Sixth Principal Meridian, County of Weld, State of Colorado.



I hereby state that this Well Location Certificate was prepared by me, or under my direct supervision, that the fieldwork was completed on 2-12-2014, for and on behalf of EXPEDITION WATER SOLUTIONS, that this is not a Land Survey Plat or an Improvement Survey Plat, and that it is not to be relied upon for establishment of fence, building, or other future improvement lines.

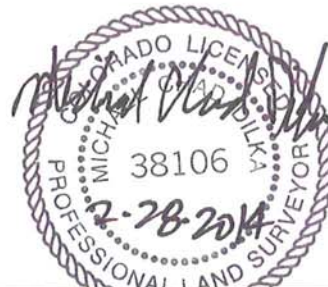
NOTES:

- 1) Bearings shown are Grid Bearings of the Colorado State Plane Coordinate System, North Zone, North American Datum 1983. The lineal dimensions as contained herein are based upon the "U.S. Survey Foot."
- 2) Ground elevations are based on an observed GPS elevation (NAVD 1988 DATUM).
- 3) IMPROVEMENTS: See LOCATION DRAWING for all visible improvements within 500' of the disturbed area.
- 4) SURFACE USE: PASTURE/PRAIRIE
- 5) INSTRUMENT OPERATOR: AARON LUND
- 6) NEAREST CULTURAL ITEMS:
BUILDING: 4614' SOUTHWEST
BUILDING UNIT: 5280'+
HIGH OCCUPANCY BUILDING UNIT: 5280'+
DESIGNATED OUTDOOR ACTIVITY AREA: 5280'+
PUBLIC ROAD: 306' NORTH
ABOVE GROUND UTILITY: 2437' WEST
RAILROAD: 5280'+ NORTHEAST
PROPERTY LINE: 250' NORTH

LEGEND

- = FOUND ALIQUOT MONUMENT AS DESCRIBED
- = CALCULATED POSITION
- = SET ALIQUOT MONUMENT AS DESCRIBED

SURFACE LOCATION
LATITUDE: 40.63977°N
LONGITUDE: 104.05948°W
PDOP: 1.5
ELEV: 4906'
1/4, 1/4: NE 1/4 NW 1/4



Michael Chad Dilka - On Behalf Of King Surveyors
Colorado Licensed Professional Land Surveyor #38106

PROJECT#: 2014087