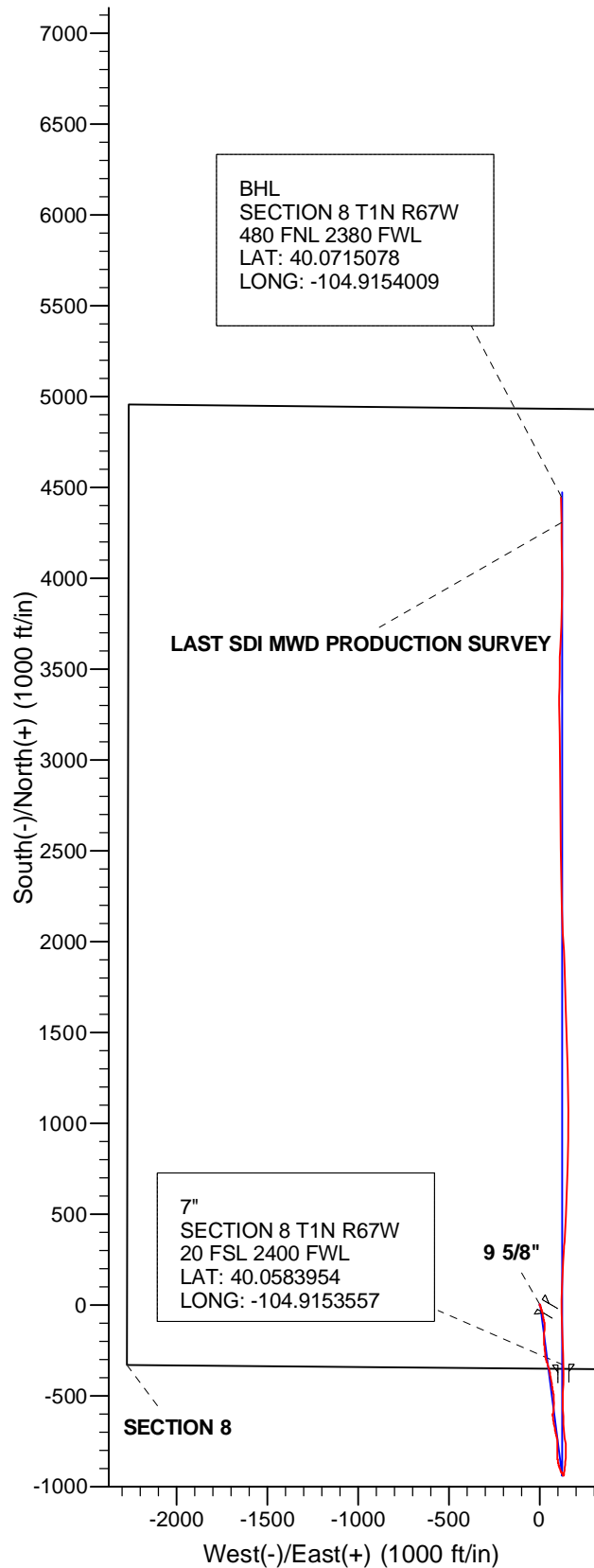
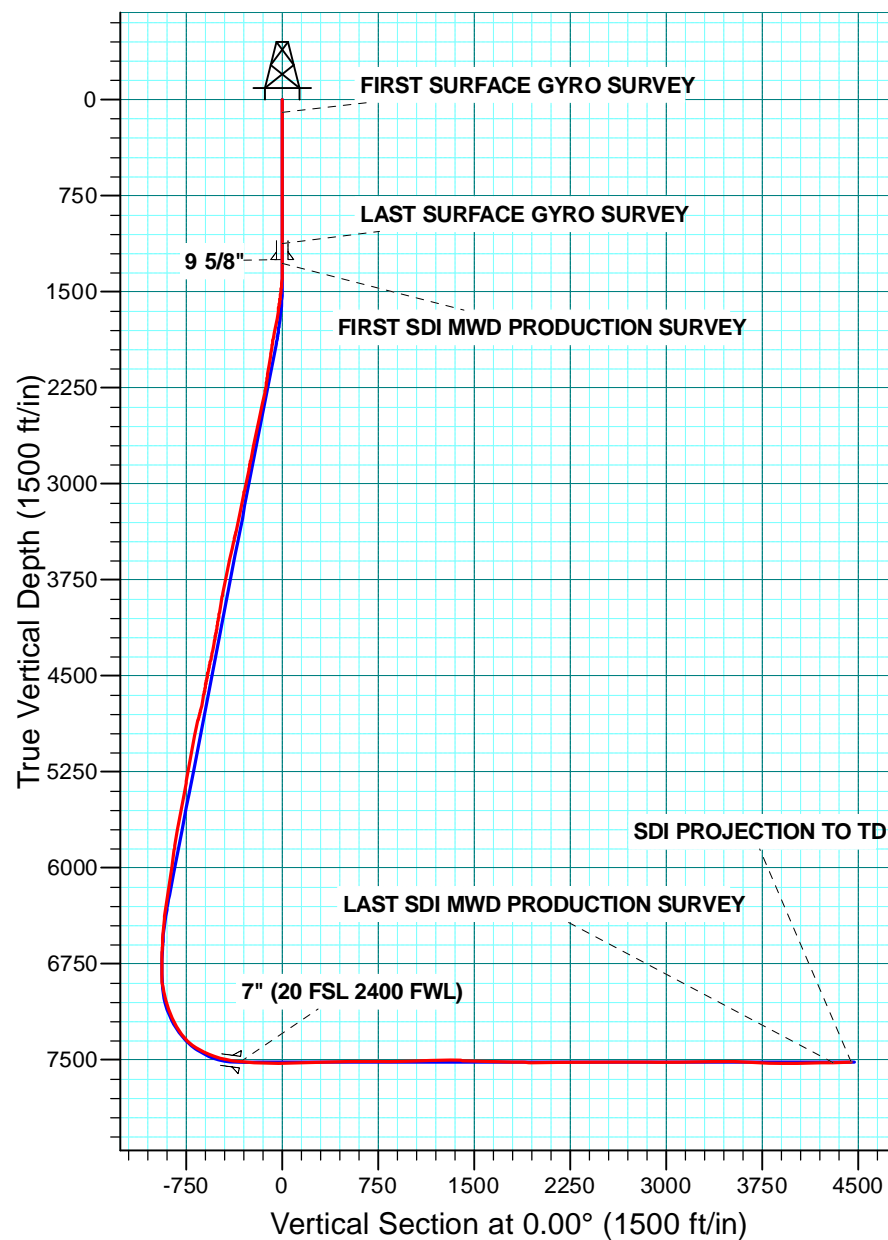


WELL DETAILS: NRC 28N-8HZ

GL 5052 & KB 25 @ 5077.00ft (H&P 311)

+N/-S	+E/-W	Northing	Easting	Latitude	Longitude
0.00	0.00	1264987.30	3163515.79	40.0593010	-104.9158230



US ROCKIES REGION PLANNING

COLORADO NORTHERN ZONE - 83

NRC 14-8HZ PAD

NRC 28N-8HZ

OH

Design: OH

Survey Report - Geographic

09 April, 2014

Company:	US ROCKIES REGION PLANNING	Local Co-ordinate Reference:	Well NRC 28N-8HZ
Project:	COLORADO NORTHERN ZONE - 83	TVD Reference:	GL 5052 & KB 25 @ 5077.00ft (H&P 311)
Site:	NRC 14-8HZ PAD	MD Reference:	GL 5052 & KB 25 @ 5077.00ft (H&P 311)
Well:	NRC 28N-8HZ	North Reference:	True
Wellbore:	OH	Survey Calculation Method:	Minimum Curvature
Design:	OH	Database:	Denver Sales Office

Project	COLORADO NORTHERN ZONE - 83, KERR MCGEE OIL & GAS ONSHORE LP		
Map System:	US State Plane 1983	System Datum:	Mean Sea Level
Geo Datum:	North American Datum 1983		
Map Zone:	Colorado Northern Zone		

Site	NRC 14-8HZ PAD, SECTION 8 T1N R67W				
Site Position:		Northing:	1,265,039.58 usft	Latitude:	40.0594450
From:	Lat/Long	Easting:	3,163,486.62 usft	Longitude:	-104.9159260
Position Uncertainty:	0.00 ft	Slot Radius:	13.200 in	Grid Convergence:	0.38 °

Well	NRC 28N-8HZ, 350 FSL 2274 FWL					
Well Position	+N/-S	0.00 ft	Northing:	1,264,987.30 usft	Latitude:	40.0593010
	+E/-W	0.00 ft	Easting:	3,163,515.79 usft	Longitude:	-104.9158230
Position Uncertainty		0.00 ft	Wellhead Elevation:	0.00 ft	Ground Level:	5,052.00 ft

Wellbore	OH				
Magnetics	Model Name	Sample Date	Declination (°)	Dip Angle (°)	Field Strength (nT)
	BGGM2013	2/27/2014	8.59	66.65	52,569

Design	OH				
Audit Notes:					
Version:	1.0	Phase:	ACTUAL	Tie On Depth:	0.00
Vertical Section:	Depth From (TVD) (ft)	+N/-S (ft)	+E/-W (ft)	Direction (°)	
	0.00	0.00	0.00		0.00

Survey Program	Date	4/9/2014			
From (ft)	To (ft)	Survey (Wellbore)	Tool Name	Description	
100.00	1,125.00	Survey #1 SURFACE GYRO (OH)	NS-GYRO-MS	North sensing gyrocompassing m/s	
1,277.00	12,722.00	Survey #2 SDI MWD PRODUCTION (OH)	SDI_MWD+CRUST_1.0	SDI MWD + Crustal anomaly, Version 1.0	

Survey									
Measured Depth (ft)	Inclination (°)	Azimuth (°)	Vertical Depth (ft)	+N/-S (ft)	+E/-W (ft)	Map Northing (usft)	Map Easting (usft)	Latitude	Longitude
0.00	0.00	0.00	0.00	0.00	0.00	1,264,987.30	3,163,515.79	40.0593010	-104.9158230
100.00	0.31	171.35	100.00	-0.27	0.04	1,264,987.04	3,163,515.84	40.0593003	-104.9158228
FIRST SURFACE GYRO SURVEY									
200.00	0.56	35.26	200.00	-0.14	0.36	1,264,987.17	3,163,516.16	40.0593006	-104.9158217
300.00	0.20	221.67	300.00	0.13	0.53	1,264,987.44	3,163,516.32	40.0593014	-104.9158211
400.00	0.50	49.54	400.00	0.29	0.75	1,264,987.59	3,163,516.54	40.0593018	-104.9158203
500.00	0.44	189.59	499.99	0.19	1.01	1,264,987.50	3,163,516.80	40.0593015	-104.9158194
600.00	0.39	349.65	599.99	0.15	0.89	1,264,987.46	3,163,516.68	40.0593014	-104.9158198
700.00	0.56	153.93	699.99	0.04	1.04	1,264,987.35	3,163,516.83	40.0593011	-104.9158193
800.00	0.35	2.79	799.99	-0.09	1.27	1,264,987.22	3,163,517.06	40.0593007	-104.9158184
900.00	0.40	190.56	899.99	-0.13	1.22	1,264,987.18	3,163,517.02	40.0593006	-104.9158186

Company:	US ROCKIES REGION PLANNING	Local Co-ordinate Reference:	Well NRC 28N-8HZ
Project:	COLORADO NORTHERN ZONE - 83	TVD Reference:	GL 5052 & KB 25 @ 5077.00ft (H&P 311)
Site:	NRC 14-8HZ PAD	MD Reference:	GL 5052 & KB 25 @ 5077.00ft (H&P 311)
Well:	NRC 28N-8HZ	North Reference:	True
Wellbore:	OH	Survey Calculation Method:	Minimum Curvature
Design:	OH	Database:	Denver Sales Office

Survey										
Measured			Vertical			Map	Map			
Depth	Inclination	Azimuth	Depth	+N/-S	+E/-W	Northing	Easting		Latitude	Longitude
(ft)	(°)	(°)	(ft)	(ft)	(ft)	(usft)	(usft)			
1,000.00	0.50	43.00	999.99	-0.15	1.46	1,264,987.16	3,163,517.25		40.0593006	-104.9158178
1,100.00	0.47	306.74	1,099.99	0.41	1.43	1,264,987.72	3,163,517.22		40.0593021	-104.9158179
1,125.00	0.52	350.64	1,124.99	0.58	1.32	1,264,987.90	3,163,517.11		40.0593026	-104.9158182
LAST SURFACE GYRO SURVEY										
1,248.00	0.35	299.84	1,247.98	1.32	0.91	1,264,988.63	3,163,516.69		40.0593046	-104.9158197
9 5/8"										
1,277.00	0.37	284.96	1,276.98	1.39	0.74	1,264,988.70	3,163,516.52		40.0593048	-104.9158203
FIRST SDI MWD PRODUCTION SURVEY										
1,369.00	2.31	171.79	1,368.96	-0.37	0.72	1,264,986.94	3,163,516.51		40.0593000	-104.9158204
1,564.00	8.67	158.33	1,562.97	-17.93	6.71	1,264,969.41	3,163,522.62		40.0592518	-104.9157990
1,656.00	10.37	163.97	1,653.70	-32.34	11.56	1,264,955.04	3,163,527.56		40.0592122	-104.9157817
1,747.00	10.43	168.56	1,743.21	-48.28	15.45	1,264,939.12	3,163,531.56		40.0591685	-104.9157678
1,839.00	10.68	170.80	1,833.65	-64.86	18.47	1,264,922.57	3,163,534.69		40.0591229	-104.9157570
1,930.00	9.36	167.87	1,923.26	-80.42	21.37	1,264,907.03	3,163,537.69		40.0590802	-104.9157466
2,023.00	7.91	165.99	2,015.21	-94.02	24.51	1,264,893.44	3,163,540.92		40.0590429	-104.9157354
2,114.00	8.00	176.73	2,105.33	-106.42	26.39	1,264,881.06	3,163,542.88		40.0590089	-104.9157287
2,206.00	9.71	180.69	2,196.24	-120.57	26.66	1,264,866.91	3,163,543.25		40.0589700	-104.9157277
2,298.00	11.29	188.83	2,286.70	-137.23	25.18	1,264,850.24	3,163,541.88		40.0589243	-104.9157330
2,389.00	11.30	184.86	2,375.94	-154.92	23.06	1,264,832.54	3,163,539.87		40.0588757	-104.9157406
2,480.00	12.63	181.15	2,464.96	-173.75	22.11	1,264,813.70	3,163,539.04		40.0588240	-104.9157440
2,572.00	12.38	176.30	2,554.78	-193.65	22.54	1,264,793.81	3,163,539.61		40.0587694	-104.9157424
2,664.00	11.61	174.80	2,644.77	-212.71	24.02	1,264,774.76	3,163,541.21		40.0587171	-104.9157372
2,756.00	10.64	171.22	2,735.04	-230.32	26.15	1,264,757.16	3,163,543.46		40.0586687	-104.9157295
2,848.00	11.55	175.97	2,825.32	-247.90	28.09	1,264,739.59	3,163,545.52		40.0586205	-104.9157226
2,940.00	10.83	176.04	2,915.57	-265.71	29.34	1,264,721.79	3,163,546.88		40.0585716	-104.9157182
3,032.00	12.03	171.26	3,005.75	-283.81	31.39	1,264,703.70	3,163,549.05		40.0585219	-104.9157108
3,124.00	12.56	164.74	3,095.64	-302.94	35.48	1,264,684.60	3,163,553.27		40.0584694	-104.9156962
3,215.00	12.55	162.19	3,184.47	-321.90	41.11	1,264,665.68	3,163,559.02		40.0584173	-104.9156761
3,307.00	12.20	163.55	3,274.33	-340.74	46.92	1,264,646.88	3,163,564.96		40.0583656	-104.9156553
3,399.00	12.18	163.45	3,364.25	-359.37	52.44	1,264,628.29	3,163,570.60		40.0583145	-104.9156356
3,493.00	12.74	171.86	3,456.05	-379.13	56.73	1,264,608.55	3,163,575.02		40.0582602	-104.9156203
3,587.00	12.92	170.56	3,547.70	-399.76	59.92	1,264,587.95	3,163,578.35		40.0582036	-104.9156089
3,681.00	12.40	170.24	3,639.42	-420.07	63.36	1,264,567.66	3,163,581.91		40.0581478	-104.9155966
3,870.00	10.89	170.89	3,824.52	-457.70	69.62	1,264,530.07	3,163,588.43		40.0580445	-104.9155742
3,964.00	9.74	169.49	3,917.00	-474.29	72.48	1,264,513.50	3,163,591.40		40.0579990	-104.9155640
4,058.00	10.32	171.62	4,009.56	-490.44	75.16	1,264,497.37	3,163,594.18		40.0579547	-104.9155545
4,153.00	9.25	171.62	4,103.18	-506.41	77.51	1,264,481.42	3,163,596.64		40.0579108	-104.9155461
4,247.00	10.70	178.63	4,195.76	-522.61	78.82	1,264,465.23	3,163,598.05		40.0578663	-104.9155414
4,341.00	11.47	184.22	4,288.01	-540.65	78.34	1,264,447.18	3,163,597.69		40.0578168	-104.9155431
4,436.00	11.75	187.14	4,381.06	-559.67	76.44	1,264,428.15	3,163,595.92		40.0577646	-104.9155499
4,530.00	12.38	186.51	4,472.99	-579.18	74.11	1,264,408.62	3,163,593.72		40.0577110	-104.9155582
4,624.00	9.28	185.12	4,565.30	-596.75	72.29	1,264,391.05	3,163,592.01		40.0576628	-104.9155647
4,813.00	13.39	171.47	4,750.61	-633.59	74.18	1,264,354.22	3,163,594.14		40.0575617	-104.9155580
4,907.00	13.91	168.75	4,841.95	-655.43	78.00	1,264,332.40	3,163,598.11		40.0575017	-104.9155443
5,002.00	12.37	168.81	4,934.46	-676.62	82.20	1,264,311.24	3,163,602.45		40.0574436	-104.9155293
5,096.00	10.72	167.14	5,026.56	-695.02	86.10	1,264,292.87	3,163,606.47		40.0573931	-104.9155154
5,190.00	10.55	166.06	5,118.95	-711.89	90.12	1,264,276.02	3,163,610.60		40.0573467	-104.9155010
5,285.00	9.87	168.91	5,212.44	-728.33	93.78	1,264,259.61	3,163,614.37		40.0573016	-104.9154879
5,474.00	10.23	182.79	5,398.57	-760.99	96.08	1,264,226.96	3,163,616.88		40.0572120	-104.9154797
5,568.00	11.51	179.36	5,490.88	-778.71	95.78	1,264,209.25	3,163,616.70		40.0571633	-104.9154808
5,662.00	10.36	176.16	5,583.17	-796.52	96.45	1,264,191.44	3,163,617.49		40.0571144	-104.9154784
5,757.00	10.45	179.08	5,676.61	-813.65	97.16	1,264,174.31	3,163,618.31		40.0570674	-104.9154759
5,946.00	7.76	175.78	5,863.21	-843.52	98.37	1,264,144.45	3,163,619.72		40.0569854	-104.9154715
6,040.00	8.53	172.45	5,956.27	-856.76	99.76	1,264,131.22	3,163,621.19		40.0569490	-104.9154666
6,134.00	8.38	169.08	6,049.25	-870.40	101.97	1,264,117.59	3,163,623.50		40.0569116	-104.9154587

Company:	US ROCKIES REGION PLANNING	Local Co-ordinate Reference:	Well NRC 28N-8HZ
Project:	COLORADO NORTHERN ZONE - 83	TVD Reference:	GL 5052 & KB 25 @ 5077.00ft (H&P 311)
Site:	NRC 14-8HZ PAD	MD Reference:	GL 5052 & KB 25 @ 5077.00ft (H&P 311)
Well:	NRC 28N-8HZ	North Reference:	True
Wellbore:	OH	Survey Calculation Method:	Minimum Curvature
Design:	OH	Database:	Denver Sales Office

Survey									
Measured Depth (ft)	Inclination (°)	Azimuth (°)	Vertical Depth (ft)	+N/-S (ft)	+E/-W (ft)	Map Northing (usft)	Map Easting (usft)	Latitude	Longitude
6,228.00	9.15	161.44	6,142.15	-884.21	105.65	1,264,103.81	3,163,627.26	40.0568737	-104.9154456
6,322.00	9.42	160.87	6,234.92	-898.56	110.55	1,264,089.49	3,163,632.26	40.0568343	-104.9154280
6,417.00	7.80	157.51	6,328.85	-911.87	115.56	1,264,076.22	3,163,637.36	40.0567978	-104.9154101
6,511.00	6.47	152.49	6,422.12	-922.46	120.45	1,264,065.66	3,163,642.31	40.0567687	-104.9153927
6,606.00	5.00	153.17	6,516.64	-930.90	124.79	1,264,057.25	3,163,646.71	40.0567455	-104.9153772
6,700.00	2.71	164.56	6,610.42	-936.70	127.23	1,264,051.46	3,163,649.19	40.0567296	-104.9153685
6,795.00	1.47	93.47	6,705.37	-938.94	129.04	1,264,049.24	3,163,651.02	40.0567235	-104.9153620
6,889.00	1.02	103.94	6,799.35	-939.21	131.06	1,264,048.98	3,163,653.04	40.0567227	-104.9153548
6,936.00	0.98	83.29	6,846.34	-939.27	131.87	1,264,048.93	3,163,653.84	40.0567226	-104.9153519
6,983.00	4.00	9.62	6,893.30	-937.60	132.54	1,264,050.60	3,163,654.50	40.0567271	-104.9153495
7,030.00	9.00	4.30	6,939.98	-932.32	133.09	1,264,055.89	3,163,655.02	40.0567416	-104.9153475
7,078.00	12.61	6.68	6,987.12	-923.37	133.98	1,264,064.84	3,163,655.85	40.0567662	-104.9153443
7,125.00	16.80	9.46	7,032.57	-911.56	135.69	1,264,076.65	3,163,657.49	40.0567986	-104.9153382
7,172.00	19.28	8.21	7,077.26	-897.18	137.92	1,264,091.05	3,163,659.62	40.0568381	-104.9153303
7,219.00	21.11	3.89	7,121.37	-881.06	139.60	1,264,107.19	3,163,661.19	40.0568824	-104.9153243
7,266.00	24.83	4.90	7,164.63	-862.77	141.02	1,264,125.48	3,163,662.49	40.0569325	-104.9153192
7,313.00	26.77	4.60	7,206.95	-842.39	142.71	1,264,145.87	3,163,664.05	40.0569885	-104.9153131
7,361.00	29.62	1.94	7,249.25	-819.75	143.98	1,264,168.52	3,163,665.17	40.0570506	-104.9153086
7,408.00	35.06	359.04	7,288.95	-794.63	144.15	1,264,193.64	3,163,665.17	40.0571196	-104.9153080
7,455.00	40.34	353.41	7,326.13	-765.99	142.17	1,264,222.27	3,163,663.01	40.0571982	-104.9153151
7,502.00	47.85	353.61	7,359.86	-733.52	138.48	1,264,254.72	3,163,659.10	40.0572874	-104.9153283
7,549.00	55.08	354.65	7,389.12	-696.97	134.74	1,264,291.24	3,163,655.12	40.0573877	-104.9153416
7,596.00	60.04	355.03	7,414.33	-657.48	131.18	1,264,330.71	3,163,651.30	40.0574961	-104.9153543
7,644.00	63.53	359.30	7,437.03	-615.25	129.11	1,264,372.92	3,163,648.96	40.0576120	-104.9153617
7,691.00	68.33	359.19	7,456.19	-572.35	128.55	1,264,415.81	3,163,648.11	40.0577298	-104.9153637
7,738.00	70.01	0.18	7,472.90	-528.43	128.31	1,264,459.73	3,163,647.58	40.0578504	-104.9153646
7,785.00	73.65	0.91	7,487.56	-483.78	128.74	1,264,504.38	3,163,647.71	40.0579729	-104.9153631
7,833.00	77.50	2.00	7,499.51	-437.32	129.92	1,264,550.85	3,163,648.59	40.0581005	-104.9153588
7,880.00	80.21	0.51	7,508.60	-391.22	130.93	1,264,596.95	3,163,649.29	40.0582270	-104.9153552
7,942.00	83.25	359.25	7,517.51	-329.88	130.79	1,264,658.30	3,163,648.76	40.0583954	-104.9153557
7" (20 FSL 2400 FWL)									
8,052.00	88.66	357.04	7,525.27	-220.25	127.23	1,264,767.89	3,163,644.47	40.0586964	-104.9153684
8,241.00	90.47	359.19	7,526.70	-31.38	121.02	1,264,956.72	3,163,637.01	40.0592148	-104.9153906
8,430.00	91.68	2.76	7,523.15	157.52	124.23	1,265,145.64	3,163,638.98	40.0597334	-104.9153791
8,619.00	91.95	4.39	7,517.17	346.05	136.01	1,265,334.25	3,163,649.52	40.0602510	-104.9153371
8,713.00	91.75	2.79	7,514.13	439.82	141.89	1,265,428.05	3,163,654.79	40.0605084	-104.9153160
8,808.00	90.40	2.14	7,512.35	534.71	145.98	1,265,522.96	3,163,658.24	40.0607689	-104.9153014
8,902.00	88.99	2.14	7,512.85	628.64	149.49	1,265,616.91	3,163,661.14	40.0610267	-104.9152889
9,090.00	90.03	1.75	7,514.46	816.52	155.87	1,265,804.83	3,163,666.28	40.0615425	-104.9152661
9,185.00	91.01	0.60	7,513.60	911.50	157.82	1,265,899.82	3,163,667.60	40.0618032	-104.9152591
9,279.00	92.02	0.13	7,511.11	1,005.46	158.42	1,265,993.78	3,163,667.58	40.0620612	-104.9152570
9,468.00	91.24	358.52	7,505.74	1,194.36	156.19	1,266,182.67	3,163,664.11	40.0625797	-104.9152650
9,563.00	90.30	358.21	7,504.46	1,289.32	153.48	1,266,277.60	3,163,660.77	40.0628404	-104.9152746
9,657.00	88.52	358.49	7,505.43	1,383.27	150.77	1,266,371.53	3,163,657.45	40.0630983	-104.9152843
9,751.00	87.92	358.16	7,508.35	1,477.18	148.03	1,266,465.42	3,163,654.08	40.0633561	-104.9152941
9,846.00	89.02	358.31	7,510.88	1,572.10	145.10	1,266,560.32	3,163,650.53	40.0636167	-104.9153046
10,129.00	87.55	358.10	7,519.35	1,854.83	136.24	1,266,842.98	3,163,639.81	40.0643928	-104.9153362
10,224.00	89.13	357.64	7,522.10	1,949.72	132.71	1,266,937.85	3,163,635.66	40.0646533	-104.9153488
10,318.00	91.18	356.84	7,521.85	2,043.60	128.19	1,267,031.70	3,163,630.51	40.0649110	-104.9153650
10,413.00	91.14	357.90	7,519.93	2,138.48	123.83	1,267,126.55	3,163,625.53	40.0651715	-104.9153806
10,507.00	89.87	358.04	7,519.10	2,232.42	120.50	1,267,220.46	3,163,621.58	40.0654293	-104.9153924
10,696.00	90.27	359.54	7,518.87	2,421.37	116.51	1,267,409.38	3,163,616.35	40.0659481	-104.9154067
10,790.00	91.41	359.46	7,517.49	2,515.35	115.69	1,267,503.36	3,163,614.91	40.0662061	-104.9154096
10,884.00	90.91	359.84	7,515.59	2,609.33	115.11	1,267,597.33	3,163,613.71	40.0664640	-104.9154117
11,073.00	89.36	359.62	7,515.14	2,798.32	114.22	1,267,786.31	3,163,611.58	40.0669829	-104.9154149

Company:	US ROCKIES REGION PLANNING	Local Co-ordinate Reference:	Well NRC 28N-8HZ
Project:	COLORADO NORTHERN ZONE - 83	TVD Reference:	GL 5052 & KB 25 @ 5077.00ft (H&P 311)
Site:	NRC 14-8HZ PAD	MD Reference:	GL 5052 & KB 25 @ 5077.00ft (H&P 311)
Well:	NRC 28N-8HZ	North Reference:	True
Wellbore:	OH	Survey Calculation Method:	Minimum Curvature
Design:	OH	Database:	Denver Sales Office

Survey									
Measured Depth (ft)	Inclination (°)	Azimuth (°)	Vertical Depth (ft)	+N/-S (ft)	+E/-W (ft)	Map Northing (usft)	Map Easting (usft)	Latitude	Longitude
11,167.00	88.19	359.14	7,517.15	2,892.30	113.21	1,267,880.28	3,163,609.94	40.0672408	-104.9154185
11,356.00	90.97	359.31	7,518.54	3,081.25	110.65	1,268,069.21	3,163,606.14	40.0677595	-104.9154276
11,450.00	91.68	359.17	7,516.36	3,175.22	109.40	1,268,163.17	3,163,604.28	40.0680175	-104.9154321
11,545.00	89.87	359.89	7,515.08	3,270.20	108.62	1,268,258.15	3,163,602.87	40.0682782	-104.9154349
11,734.00	90.57	0.74	7,514.35	3,459.20	109.66	1,268,447.14	3,163,602.66	40.0687971	-104.9154311
11,828.00	88.59	1.62	7,515.04	3,553.17	111.60	1,268,541.12	3,163,603.98	40.0690550	-104.9154242
11,922.00	87.41	2.73	7,518.32	3,647.04	115.16	1,268,635.02	3,163,606.93	40.0693127	-104.9154115
12,111.00	87.98	1.09	7,525.92	3,835.78	121.46	1,268,823.79	3,163,611.98	40.0698308	-104.9153890
12,206.00	90.37	0.45	7,527.29	3,930.75	122.73	1,268,918.77	3,163,612.63	40.0700915	-104.9153844
12,300.00	90.07	359.79	7,526.93	4,024.75	122.93	1,269,012.77	3,163,612.21	40.0703496	-104.9153837
12,488.00	91.11	359.60	7,524.99	4,212.73	121.93	1,269,200.74	3,163,609.97	40.0708656	-104.9153873
12,583.00	91.08	358.93	7,523.18	4,307.71	120.71	1,269,295.70	3,163,608.12	40.0711264	-104.9153917
LAST SDI MWD PRODUCTION SURVEY									
12,722.00	91.08	358.93	7,520.56	4,446.66	118.12	1,269,434.63	3,163,604.61	40.0715078	-104.9154009
SDI PROJECTION TO TD									

Casing Points					
Measured Depth (ft)	Vertical Depth (ft)	Name	Casing Diameter (in)	Hole Diameter (in)	
1,248.00	1,247.98	9 5/8"	9.625	12.250	
7,942.00	7,517.51	7" (20 FSL 2400 FWL)	7.000	7.500	

Design Annotations					
Measured Depth (ft)	Vertical Depth (ft)	Local Coordinates		Comment	
		+N/-S (ft)	+E/-W (ft)		
100.00	100.00	-0.27	0.04	FIRST SURFACE GYRO SURVEY	
1,125.00	1,124.99	0.58	1.32	LAST SURFACE GYRO SURVEY	
1,277.00	1,276.98	1.39	0.74	FIRST SDI MWD PRODUCTION SURVEY	
12,583.00	7,523.18	4,307.71	120.71	LAST SDI MWD PRODUCTION SURVEY	
12,722.00	7,520.56	4,446.66	118.12	SDI PROJECTION TO TD	

Checked By: _____ Approved By: _____ Date: _____