

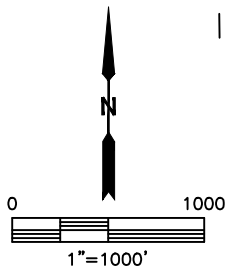
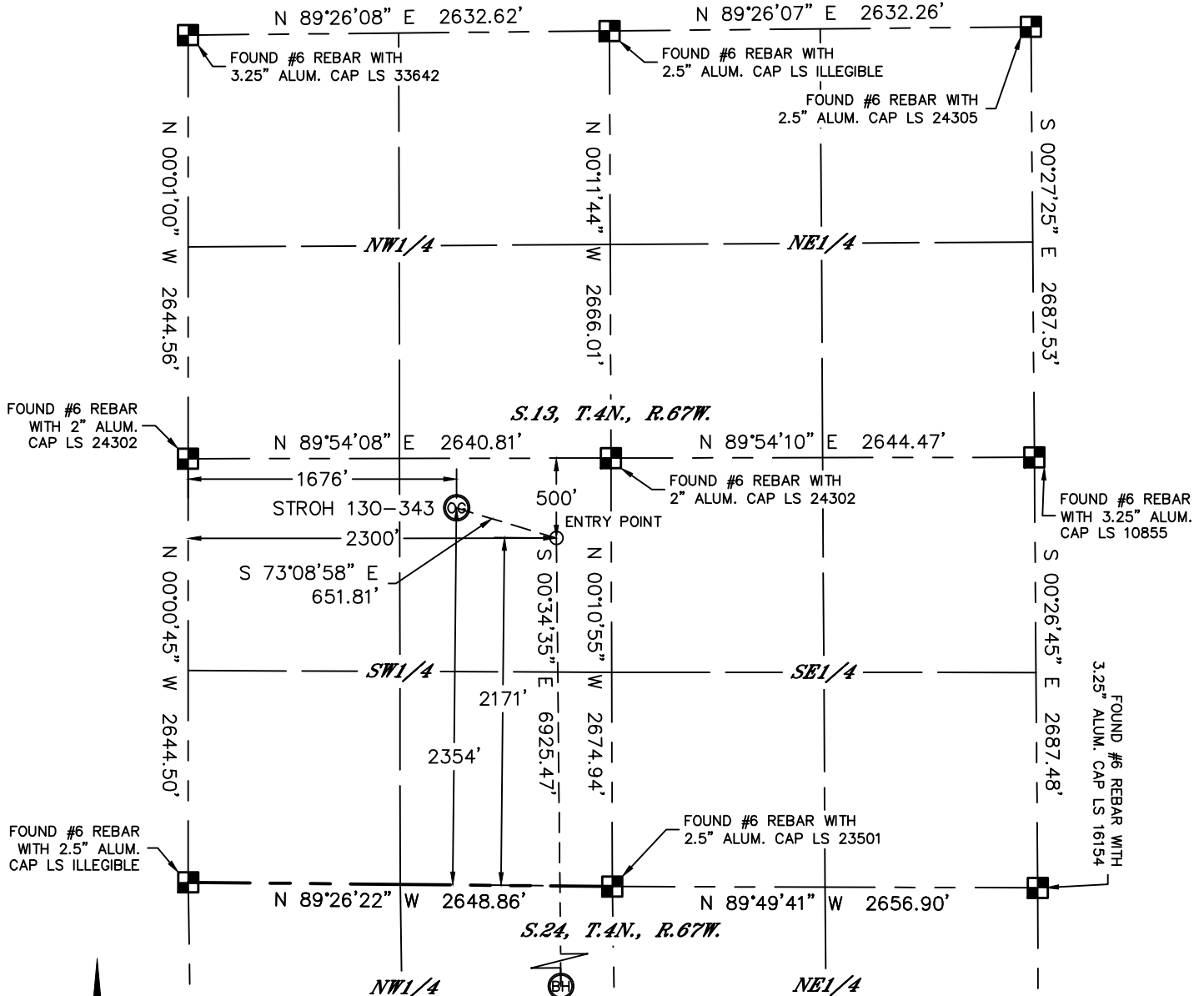


Lat40°, Inc. 1635 Foxtrail Drive, Suite 325 Loveland, CO 970-776-3321

WELL LOCATION CERTIFICATE

SECTION: 13
TOWNSHIP: 4N
RANGE: 67W

THIS MAP DOES NOT REPRESENT A BOUNDARY SURVEY



In accordance with a request from Mac Neumann with PDC ENERGY Lat40°, Inc. has determined the surface location of the STROH 130-343 to be 2354' from the SOUTH line and 1676' from the WEST line as measured at right angles from the section lines of Section 13, Township 4 North, Range 67 West and the bottom hole to be 500' from the SOUTH line and 2300' from the WEST line as measured at right angles from the section lines of Section 24, Township 4 North, Range 67 West of the Sixth Principal Meridian, County of Weld, State of Colorado.

I hereby state that this Well Location Certificate was prepared by me, or under my direct supervision, that the fieldwork was completed on 1/24/2014, for and on behalf of PDC ENERGY. That this is not a Land Survey Plat or an Improvement Survey Plat, and that it is not to be relied upon for establishment of fence, building, or other future improvement lines.

SURFACE LOCATION
LAT: 40.31103°N
LONG: 104.84265°W
PDOP: 2.1
ELEV: 4804'
1/4,1/4: NE1/4SW1/4

BOTTOM HOLE
LAT: 40.29149°N
LONG: 104.84035°W
1/4,1/4: SE1/4SW1/4

ENTRY POINT
LAT: 40.31050°N
LONG: 104.84042°W
1/4,1/4: NE1/4SW1/4

NOTE:

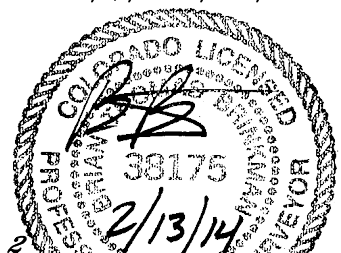
- 1) Bearings shown are Grid Bearings of the Colorado State Plane Coordinate System, North Zone, North American Datum 1983/2007. The lineal dimensions as contained herein are based upon the "U.S. Survey Foot."
- 2) Ground elevations are based on an observed GPS elevation (NAVD 1988 DATUM).
- 3) IMPROVEMENTS: See LOCATION DRAWING for all visible improvements within 500' of disturbed area.
- 4) SURFACE USE: CROP LAND
- 5) INSTRUMENT OPERATOR: ADAM KELLY
- 6) NEAREST CULTURAL ITEMS:
BUILDING: ±2585' NW
BUILDING UNIT: ±4820' NW
HIGH OCCUPANCY BUILDING UNIT: ±4820' NE
DESIGNATED OUTSIDE ACTIVITY AREA: 5280'+
PUBLIC ROAD: (CR 23) 1653' W
ABOVEGROUND UTILITY: 1630' W
RAILROAD: ±2436' SE
PROPERTY LINE: 310' N

LEGEND

- = ALIQUOT MONUMENT AS DESCRIBED
○ = CALCULATED POSITION

SHEET 1 OF 2

Brian T. Brinkman, on behalf of Lat40°, Inc.
Colorado Licensed Professional Land Surveyor No. 38175
DATE: 2/12/2014
PROJECT#: 2013156



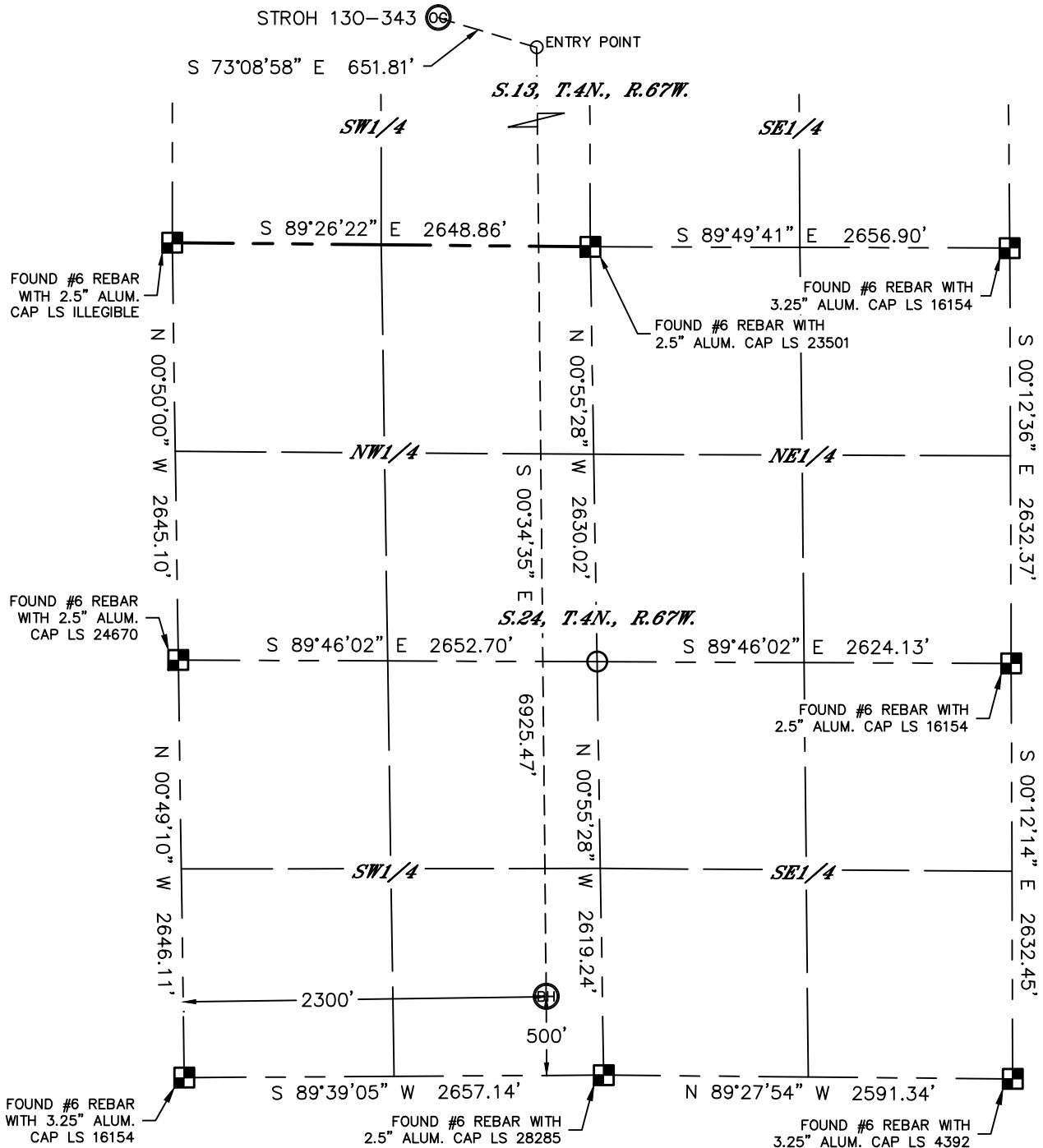


Lat40°, Inc. 1635 Foxtrail Drive, Suite 325 Loveland, CO 970-776-3321

WELL LOCATION CERTIFICATE

THIS MAP DOES NOT REPRESENT A BOUNDARY SURVEY

SECTION: 13
TOWNSHIP: 4N
RANGE: 67W

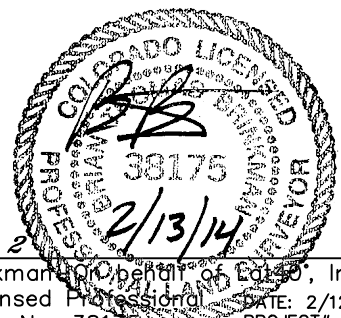


LEGEND

- = ALIQUOT MONUMENT AS DESCRIBED
- = CALCULATED POSITION

SHEET 2 OF 2

Brian T. Brinkman, Principal of Lat40°, Inc.
Colorado Licensed Professional Land Surveyor No. 38175
DATE: 2/12/2014
PROJECT#: 2013156



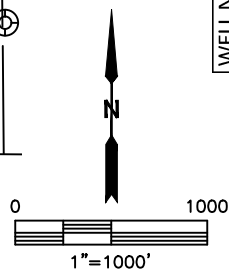
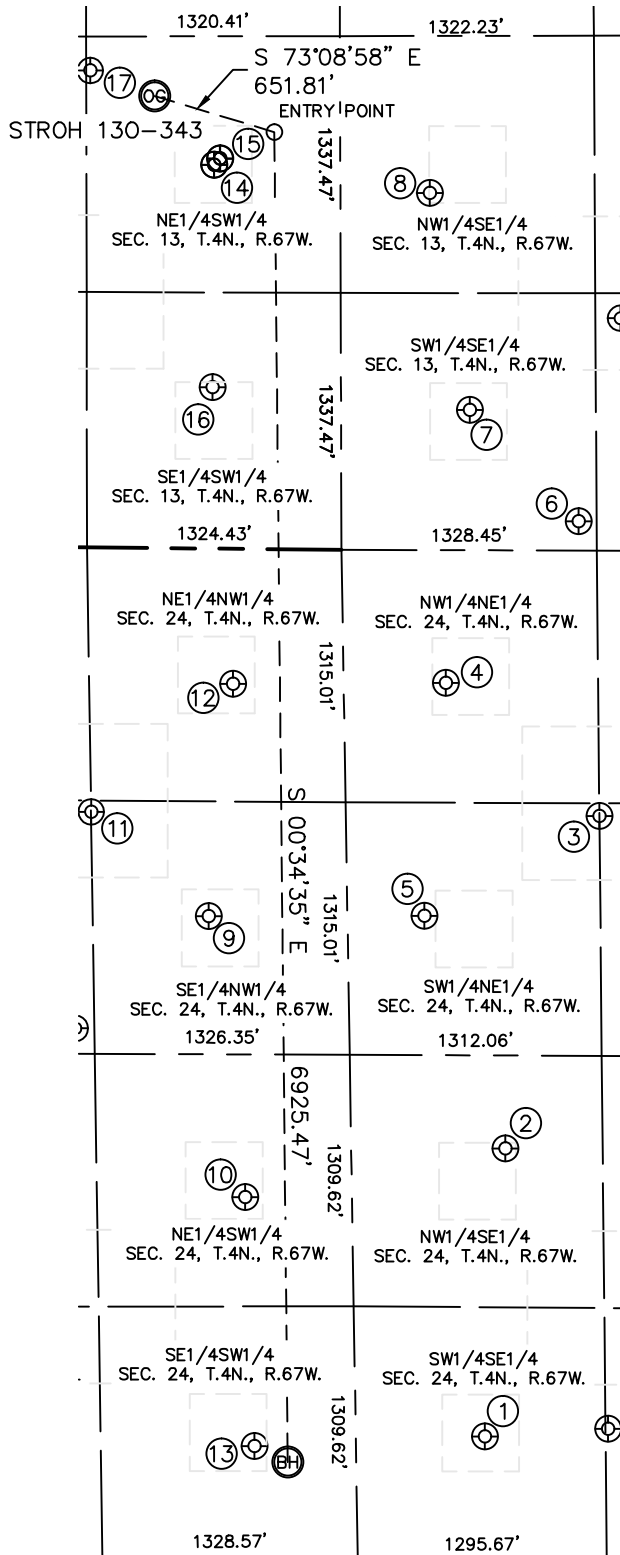


Lat40°, Inc. 1635 Foxtrail Drive, Suite 325 Loveland, CO 970-776-3321

SITE SKETCH

STROH 130-343

SECTION: 13
TOWNSHIP: 4N
RANGE: 67W



WELL NO.	WELL NAME	SHL FOOTAGE			SHL LAT°	SHL LONG°	PDOP	ELEV (FT.)	1/4/1/4
		FSL	FSL	FEL					
1	JOHNSTON 34-24	637	1927	FEL	40.29184	-104.83667	3.1	4726	SWSE
2	ORR 33-24	2139	1816	FEL	40.29595	-104.83625	2.9	4725	NWSE
3	BERNHARDT 24C	1383	1320	FEL	40.30069	-104.83445	1.8	4721	SENE
4	JOHNNY 1	691	2117	FEL	40.30261	-104.83730	2.2	4722	NWNE
5	JENNIFER 1	1905	2233	FEL	40.29929	-104.83773	2.0	4724	SWNE
6	BERNHARDT 13T	152	1423	FEL	40.30491	-104.83480	2.4	4718	SWSE
7	BRYCE 1	731	1984	FEL	40.30651	-104.83681	1.8	4810	SWSE
8	BRINDL 1	1860	2184	FEL	40.30962	-104.83753	2.4	4779	NWSE
9	ORR 1-42	515	1926	FEL	40.29630	-104.84757	1.8	4727	SENE
10	RORY 1	1882	2097	FEL	40.29529	-104.84111	1.6	4728	NESW
11	STROH 5	1377	1326	FEL	40.30081	-104.84393	1.5	4802	SENE
12	STROH 24-21	703	2073	FEL	40.30262	-104.84127	1.5	4749	NENW
13	JOHNSTON 1	584	2127	FEL	40.29173	-104.84097	1.9	4729	SESW
14	UPRC 13-11E	1997	1987	FEL	40.31004	-104.84155	1.7	4808	NESW
15	STROH 013-21D	2031	2017	FEL	40.31013	-104.84144	1.5	4808	NESW
16	ALLEN 1	840	1977	FEL	40.30686	-104.84161	2.0	4805	SESW
17	STROH 013-20	2482	1342	FEL	40.31140	-104.84385	2.8	4809	NESW

DATE: 2/12/2014
PROJECT#: 2013156