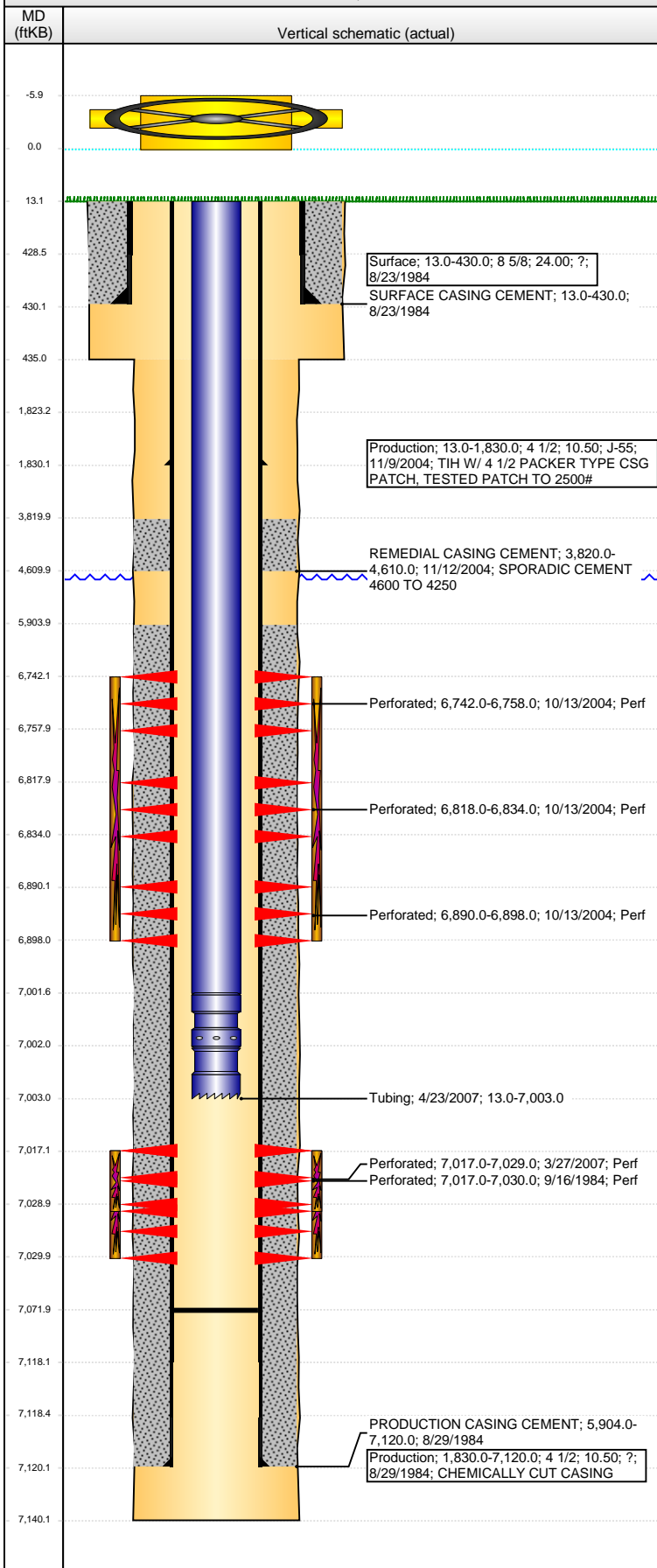


Well Name: CHENOWETH 02

VERTICAL - ORIGINAL HOLE, 6/24/2014 11:26:58 AM



Well Header

API	Business Unit	District	Well Config
05-123-11924	WATTENBERG	15	VERTICAL
Original KB Elevation (ft)	KB - GL / MSL (ftKB)	Spud Date	P & A Date
4,801.00	13.00	8/23/1984	

Comment

CSG RPR 11/04 PATCH @ 1830 TEST 2500#

DISCREPANCY - ST RPT SPUD DATE 08/24/1984, DRL RPT SPUD DATE 08/23/1984. DRP RPT TD DATE 8/28/1984; ST RPT TD DATE 8/29/1984

WELLFILE HAS NO INFORMATION ABOUT INITIAL CODELL PERF AND FRAC, USED INFO FROM SCHEMATIC

Directions To Well

Congressional Location

Quarter 1	Quarter 2	Quarter 3	Quarter 4	Section	Township	Twntshp N...	Range	Rng E/W Dir
		SW	SW	20	4	N	64	W

Bottom Hole Location

North-South Distance (ft)	From N or S Line	East-West Distance (ft)	From E or W Line

Plug Back Total Depths

Date	Depth (ftKB)	Method	Com
9/5/1984	7,076.0	CASED HOLE LOG	DEPTH LOGGER ON CBL
8/24/1987	7,103.0	TAG	BAIL DOWN TO LAND TUBING
4/23/2007	7,072.0	TAG	TAG TO LAND TUBING

Wellbore Sections

Section Des	Size (in)	Act Top, MD (ftKB)	Act Btm, MD (ftKB)
SURFACE	12 1/4	13.0	435.0
PRODUCTION	7 7/8	435.0	7,140.0

Zone Statuses

Zone Name	Status Date	Status	Job
NIOBRARA	10/28/2004	PR	RECOMPLETION, 10/12/2004 00:00
NIOBRARA	10/4/2005	PR	COMMINGLE ZONES, 9/30/2005 00:00
CODELL	11/29/1984	PR	DRILLING/COMPLETION - ORIGINAL, 8/23/1984 00:00
CODELL	10/12/2004	SI	RECOMPLETION, 10/12/2004 00:00
CODELL	10/4/2005	PR	COMMINGLE ZONES, 9/30/2005 00:00
CODELL	4/25/2007	PR	RE-FRAC, 3/26/2007 00:00

Casing Strings

Surface, 430.0ftKB

Casing Description	Run Date	OD (in)	Wt/Len (l...)	Grade	Top, MD (ft...)	MD (ftKB)
Surface	8/23/1984	8 5/8	24.00	?	13.0	430.0

Production, 1,830.0ftKB

Casing Description	Run Date	OD (in)	Wt/Len (l...)	Grade	Top, MD (ft...)	MD (ftKB)
Production	11/9/2004	4 1/2	10.50	J-55	13.0	1,830.0

Production, 7,120.0ftKB

Casing Description	Run Date	OD (in)	Wt/Len (l...)	Grade	Top, MD (ft...)	MD (ftKB)
Production	8/29/1984	4 1/2	10.50	?	13.0	7,120.0

Cement

Description	Top Depth (ftKB)	Bottom Depth (ftKB)
SURFACE CASING CEMENT	13.0	430.0
PRODUCTION CASING CEMENT	5,904.0	7,120.0
REMEDIAL CASING CEMENT	3,820.0	4,610.0

Tubing Components

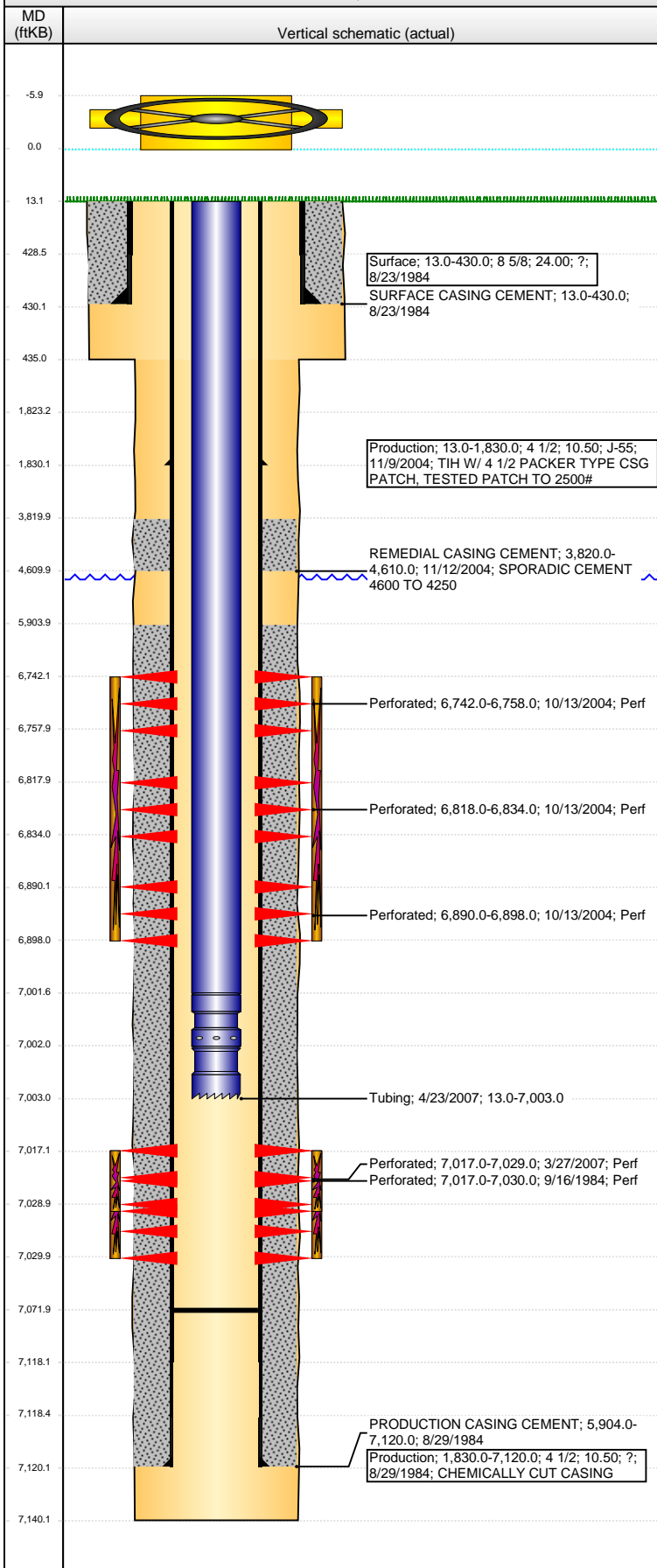
Item Des	OD (in)	Wt (lb/ft)	Grade	Jts	Len (ft)	Btm (ftKB)	Btm (TVD) (ftKB)
EUE 8rd Tubing	2 3/8	4.70	J-55	218	6,988.50	7,001.5	
Seal Nipple	2 3/8				0.50	7,002.0	
Notched collar	2 3/8				1.00	7,003.0	

Perforation Data

Zone	Bnch/St g	Entered Shot Total	Top (ftKB)	Btm (ftKB)	Date
NIOBRARA, ORIGINAL HOLE		96	6,742.00	6,758.00	10/13/2004
NIOBRARA, ORIGINAL HOLE		96	6,818.00	6,834.00	10/13/2004
NIOBRARA, ORIGINAL HOLE		48	6,890.00	6,898.00	10/13/2004
CODELL, ORIGINAL HOLE		48	7,017.00	7,029.00	3/27/2007
CODELL, ORIGINAL HOLE		14	7,017.00	7,030.00	9/16/1984

Well Name: CHENOWETH 02

VERTICAL - ORIGINAL HOLE, 6/24/2014 11:27:00 AM



Stimulations & Treatments

Date	9/17/1984	Zone	CODELL, ORIGINAL HOLE	Primary Job Type	DRILLING/COMPLETION - ORIGINAL
Technical Result		Tech Result Details		Tech Result Note	
Comment					
Date	10/27/2004	Zone	NIOBRARA, ORIGINAL HOLE	Primary Job Type	RECOMPLETION
Technical Result		Tech Result Details		Tech Result Note	
Comment					
Date	4/19/2007	Zone	CODELL, ORIGINAL HOLE	Primary Job Type	RE-FRAC
Technical Result		Tech Result Details		Tech Result Note	
Comment					

Other In Hole

Run Date	Des	OD (in)	Top (ftKB)	Btm (ftKB)

Logs

Date	Type	Top, MD (ftKB)	Btm, MD (ftKB)
8/28/1984	COMPENSATED DENSITY	4,300.0	7,136.0
8/28/1984	INDUCTION	433.0	7,138.0
9/5/1984	CEMENT BOND	5,800.0	7,072.0
11/15/2004	CBL/CCL/GR	3,600.0	4,800.0