

## **WPX ENERGY ROCKY MOUNTAIN LLC-EBUS**

PA 513-2

**Aztec 1000**

# **Post Job Summary**

## **Cement Surface Casing**

Date Prepared: 03/23/2014  
Version: 1

Service Supervisor: Smith, Christopher

Submitted by: Grand Junction Engineering

## The Road to Excellence Starts with Safety

Sold To #: 300721	Ship To #: 3191535	Quote #:	Sales Order #: 0901195123
Customer: WPX ENERGY ROCKY MOUNTAIN LLC-EBUS		Customer Rep: BRANDON HAIRE	
Well Name: WPX ENERGY		Well #: PA 513-2	API/UWI #: 05-045-22138-00
Field: PARACHUTE	City (SAP): PAR	County/Parish: GARFIELD	State: COLORADO
Legal Description: NE SW-2-7S-95W-2028FSL-1560FWL			
Contractor:		Rig/Platform Name/Num: Aztec 1000	
Job BOM: 7521			
Well Type: DIRECTIONAL GAS			
Sales Person: HALAMERICA\HB50180		Srvc Supervisor: Thomas Ponder	
Job			

Formation Name	
Formation Depth (MD)	Top
Form Type	BHST
Job depth MD	946ft
Water Depth	Wk Ht Above Floor
Perforation Depth (MD)	From
	To

Well Data										
Description	New / Used	Size in	ID in	Weight lbm/ft	Thread	Grade	Top MD ft	Bottom MD ft	Top TVD ft	Bottom TVD ft
Casing		9.625	9.001	32.3	8 RD	H-40	0	946	0	0
Open Hole Section			13.5				0	955		0

Tools and Accessories									
Type	Size in	Qty	Make	Depth ft		Type	Size in	Qty	Make
Guide Shoe	9.625	1	WTF	946		Top Plug	9.625	1	HES
Float Shoe	9.625					Bottom Plug	9.625		HES
Float Collar	9.625	1	WTF	941		SSR plug set	9.625		HES
Insert Float	9.625					Plug Container	9.625	1	HES
Stage Tool	9.625					Centralizers	9.625		HES

Miscellaneous Materials											
Gelling Agt		Conc		Surfactant		Conc		Acid Type		Qty	Conc
Treatment Fld		Conc		Inhibitor		Conc		Sand Type		Size	Qty

Fluid Data										
Stage/Plug #: 1										
Fluid #	Stage Type	Fluid Name	Qty	Qty UoM	Mixing Density lbm/gal	Yield ft3/sack	Mix Fluid Gal	Rate bbl/min	Total Mix Fluid Gal	
1	Fresh Water	Fresh Water	50	bbl	8.34			10		
Fluid #	Stage Type	Fluid Name	Qty	Qty UoM	Mixing Density lbm/gal	Yield ft3/sack	Mix Fluid Gal	Rate bbl/min	Total Mix Fluid Gal	
2	Tail Cement	VARICEM (TM) CEMENT	275	Sack/Ton	12.8	2.11		8	11.77	
11.71 Gal			FRESH WATER							

Fluid #	Stage Type	Fluid Name	Qty	Qty UoM	Mixing Density lbm/gal	Yield ft3/sack	Mix Fluid Gal	Rate bbl/min	Total Mix Fluid Gal
3	Displacement	Displacement	70.9	bbl	8.34			10	
Cement Left In Pipe		Amount	45 ft		Reason		Shoe Joint		
Comment									

# Summary Report



Crew: \_\_\_\_\_

Job Start Date: 3/17/2014

Sales Order #: 0901195123  
WO #: 0901195123  
PO/AFE #: NA

Customer:	WPX ENERGY ROCKY MOUNTAIN LLC-EBUS	Field:	PARACHUTE	Job Type:	CMT SURFACE CASING BOM
UWI / API Number:	05-045-22138-00	County/Parish:	GARFIELD	Service Supervisor:	Thomas Ponder
Well Name:	WPX ENERGY	State:	COLORADO		
Well No:	PA 513-2	Latitude:	39.465048	Cust Rep Name:	BRANDON HAIRE
		Longitude:	-107.969265	Cust Rep Phone #:	
		Sect / Twn / Rng:	2/7/95		

**Remarks:**

<b>The Information Stated Herein Is Correct</b>	Customer Representative Signature	Date
	Customer Representative Printed Name	

## 1.1 Job Event Log

Type	Seq. No.	Activity	Graph Label	Date	Time	Source	DH Density (ppg)	Comb Pump Rate (bbl/min)	PS Pump Press (psi)	Pump Stg Tot (bbl)	Comment
Event	1	Call Out	Call Out	3/16/2014	22:00:00	USER					ON LOCATION 0300
Event	2	Pre-Convoy Safety Meeting	Pre-Convoy Safety Meeting	3/17/2014	00:45:00	USER					ALL HES PRESENT FOR PRE-CONVOY SAFETY HUDDLE
Event	3	Crew Leave Yard	Crew Leave Yard	3/17/2014	01:00:00	USER					
Event	4	Arrive At Loc	Arrive At Loc	3/17/2014	02:00:00	USER					RIG WAS STILL RUNNING CASING WHEN CREW ARRIVED ON LOCATION
Event	5	Assessment Of Location Safety Meeting	Assessment Of Location Safety Meeting	3/17/2014	05:30:00	USER					TD- 955', TP- 947', SJ- 45', MUD- 10.5 PPG, HOLE- 13 1/2", SURFACE CASING- 9 5/8" 32.3# H-40
Event	6	Rig-Up Equipment	Rig-Up Equipment	3/17/2014	05:45:00	USER					1-550 PICKUP, 1-ELITE PUMP, 1-660 CUFT BULK TRUCK
Event	7	Pre-Job Safety Meeting	Pre-Job Safety Meeting	3/17/2014	06:15:00	USER					ALL HES PRESENT, RIG CREW PRESENT, RIG CIRCULATED CASING @ 0530
Event	8	Start Job	Start Job	3/17/2014	06:28:11	COM6					
Event	9	Prime Pumps	Prime Pumps	3/17/2014	06:28:30	COM6	8.24	2	53	2	FILL LINES
Event	10	Test Lines	Test Lines	3/17/2014	06:30:20	COM6	8.20	.3	3135	.3	GOOD PRESSURE TEST NO LEAKS IN THE LINES
Event	11	Pump Spacer 1	Pump Spacer 1	3/17/2014	06:34:42	COM6	8.19	10	390	50	FRESH WATER
Event	12	Pump Tail Cement	Pump Tail Cement	3/17/2014	06:44:04	COM6	12.8	8	363	103.3	275 SKS 12.8 PPG 2.11 FT3/SK 11.77 GAL/SK
Event	13	Shutdown	Shutdown	3/17/2014	06:58:14	USER					
Event	14	Drop Top Plug	Drop Top Plug	3/17/2014	06:58:42	COM6					PLUG DROP VERIFIED VIA TATTLE TELL BY THE CO REP

Event	15	Pump Displacement	Pump Displacement	3/17/2014	06:59:06	COM6	8.29	10	490	60.9	FRESH WATER, WASHED UP ON TOP OF THE PLUG WITH THE FIRST 10 BBL OF DISPLACEMENT OUT OF THE MIXING TUB
Event	16	Slow Rate	Slow Rate	3/17/2014	07:08:53	USER	8.34	2	200	10	GOOD RETURNS, CIRCULATED 20 BBL OF CEMENT TO SURFACE
Event	17	Bump Plug	Bump Plug	3/17/2014	07:12:42	COM6			229	70.9	PLUG BUMPED
Event	18	Check Floats	Check Floats	3/17/2014	07:16:01	USER				70.9	FLOATS HELD, 3/4 BBL BACK TO THE DISPLACEMENT TANKS
Event	19	End Job	End Job	3/17/2014	07:16:47	COM6					THANK YOU FOR CHOOSING HALLIBURTON, THOMAS PONDER AND CREW

# HALLIBURTON

Company: WPX

Date: 3/17/2014

Submitted by: THOMAS PONDER

Date Rec.: 3/17/2014

Attention: LARRY COOKSEY

S.O.# 901195123

Lease PA

Job Type: SURFACE

Well # 513-2

Specific Gravity *MAX* 1

pH *8* 7

Potassium (K) *5000* 250 Mg / L

Calcium (Ca) *500* 120 Mg / L

Iron (FE2) *300* 0 Mg / L

Chlorides (Cl) *3000* 0 Mg / L

Sulfates (SO<sub>4</sub>) *1500* <200 Mg / L

Carbonates hardness

Temp *40-80* 54 Deg

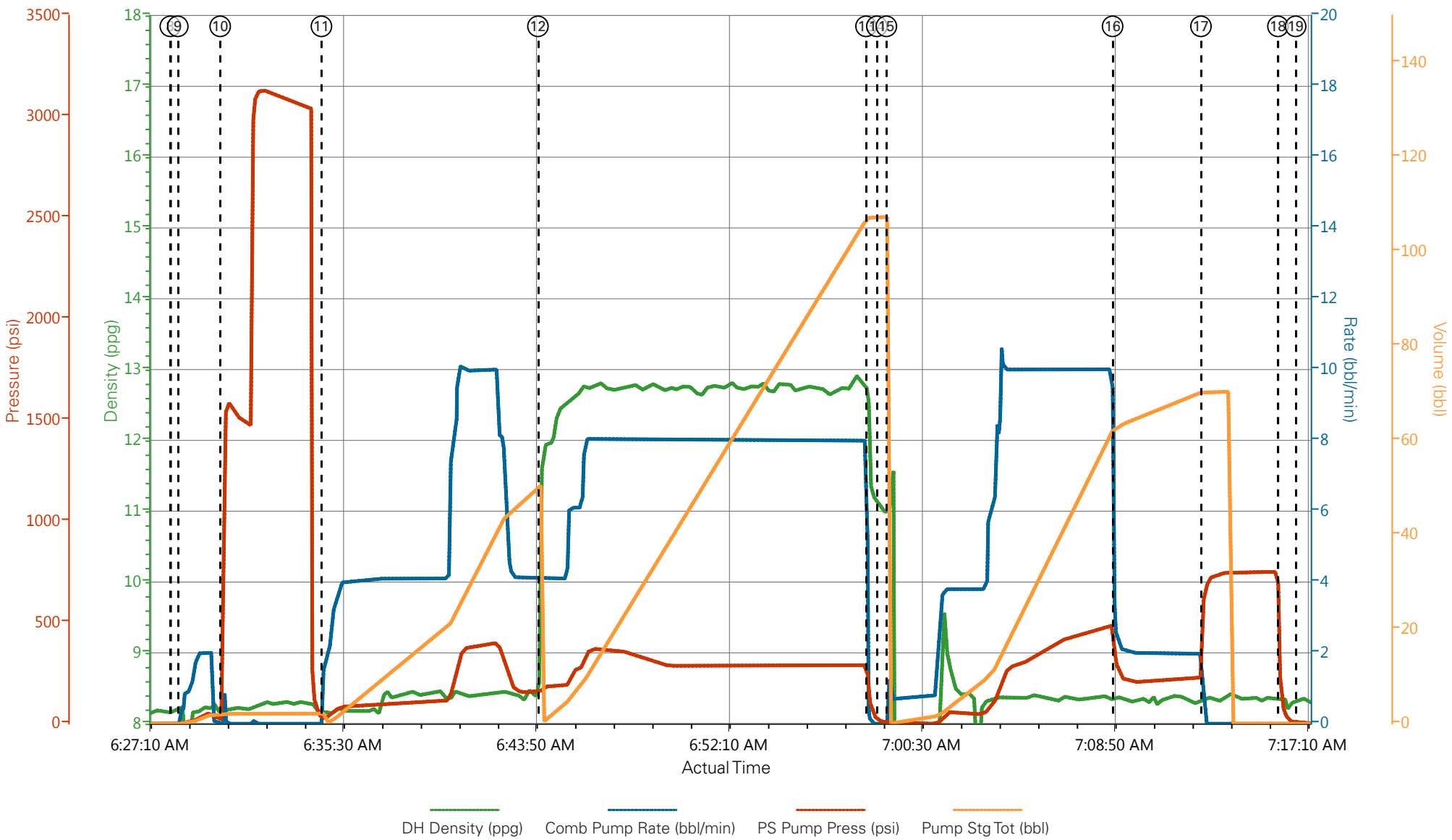
Total Dissolved Solids Mg / L

Respectfully: THOMAS PONDER

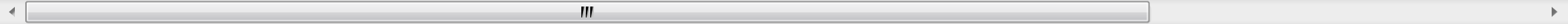
Title: CEMENTING SUPERVISOR

Location: GRAND JCT, CO

WPX - PA 513-2 - 9.625 IN SURFACE



- |   |   |                                     |                                    |                       |
|---|---|-------------------------------------|------------------------------------|-----------------------|
| ① Call Out n/a;n/a;n/a;n/a                  | ④ Arrive At Loc n/a;n/a;n/a;n/a                         | ⑦ Pre-Job Safety Meeting 8.19;0;1;0 | ⑩ Test Lines 8.2;0.4;19;2.1        | ⑬ Shutdown 12.16;0.2  |
| ② Pre-Convoy Safety Meeting n/a;n/a;n/a;n/a | ⑤ Assessment Of Location Safety Meeting n/a;n/a;n/a;n/a | ⑧ Start Job 8.15;0;1;0              | ⑪ Pump Spacer 1 8.19;1.7;25;0      | ⑭ Drop Top Plug 11.08 |
| ③ Crew Leave Yard n/a;n/a;n/a;n/a           | ⑥ Rig-Up Equipment n/a;n/a;n/a;n/a                      | ⑨ Prime Pumps 8.24;0.6;0;0          | ⑫ Pump Tail Cement 11.38;4.1;166;0 | ⑮ Pump Displacement   |



▼ **HALLIBURTON** | iCem® Service

Created: 2014-03-17 03:38:03, Version: 3.0.121 [Edit](#)



# WPX - PA 513-2 - 9.625 IN SURFACE

