

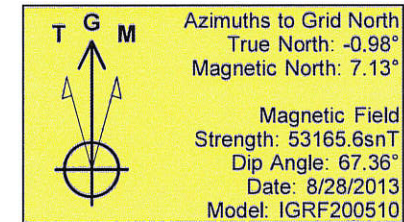
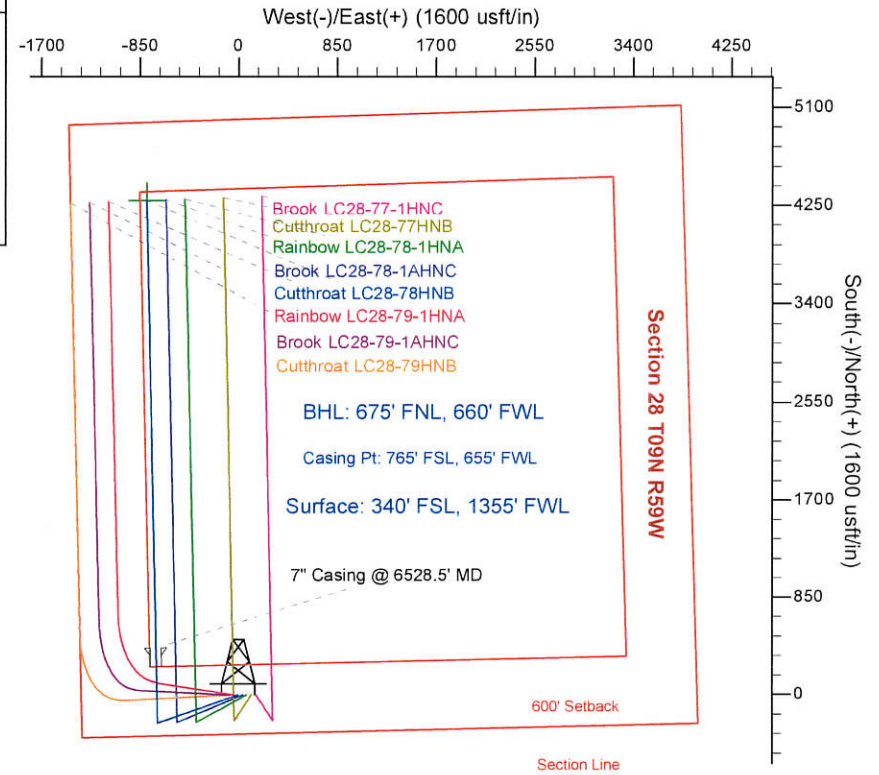
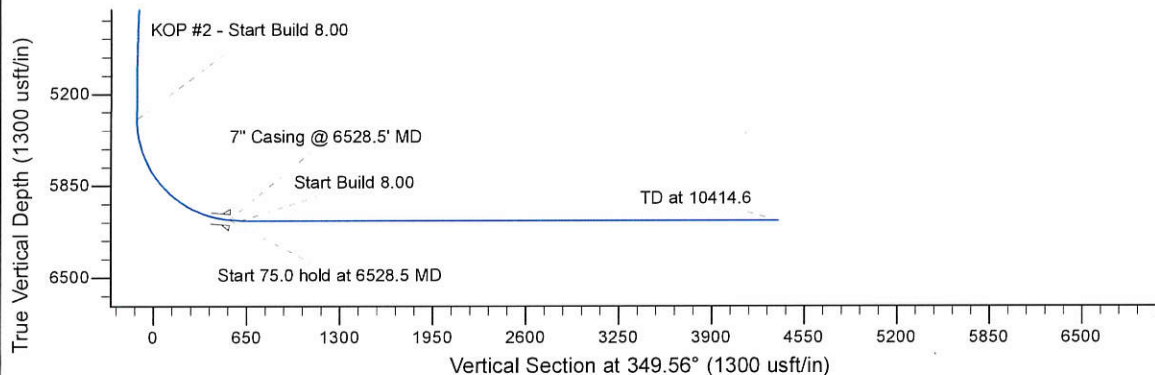
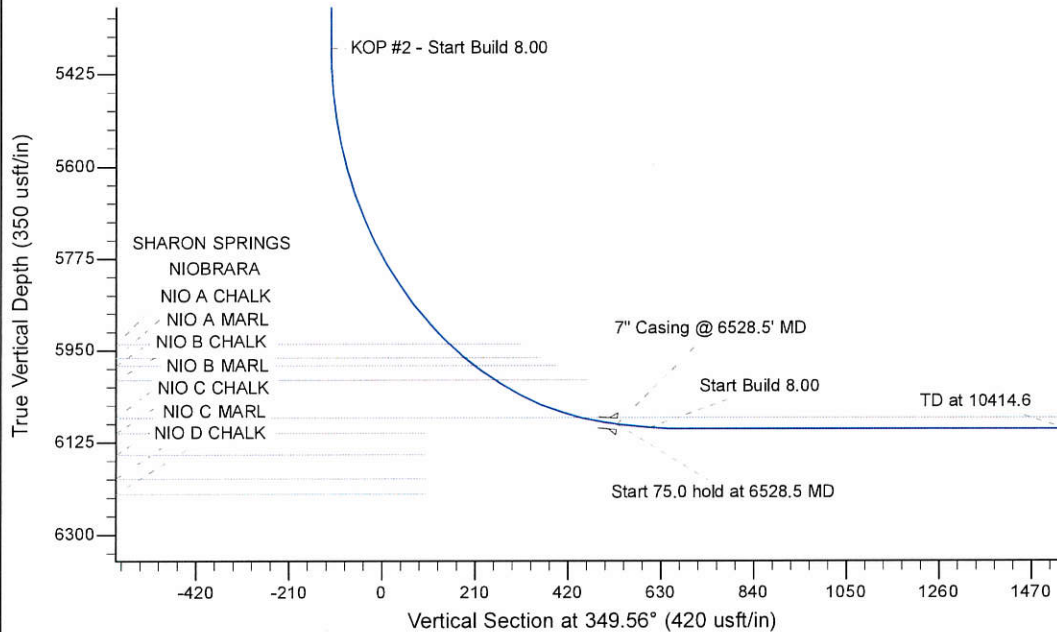
Project: Wattenberg Field
 Site: LC (Sec.28-T09N-R59W) Weld County, CO
 Well: Cutthroat LC28-78HNB
 Wellbore: Original Drilling
 Design: APD - Rev 2

Northern Region Drilling - Working

Geodetic System: US State Plane 1983
 Datum: North American Datum 1983
 Ellipsoid: GRS 1980
 Zone: Colorado Northern Zone
 System Datum: Mean Sea Level

SECTION DETAILS

Sec	MD	Inc	Azi	TVD	+N/-S	+E/-W	Dleg	TFace	VSec	Target
1	0.0	0.00	0.00	0.0	0.0	0.0	0.00	0.00	0.0	
2	1800.0	0.00	0.00	1800.0	0.0	0.0	0.00	0.00	0.0	
3	2553.4	15.07	250.58	2544.7	-32.7	-92.9	2.00	250.58	-15.4	
4	4630.3	15.07	250.58	4550.3	-212.3	-602.1	0.00	0.00	-99.6	
5	5383.7	0.00	0.00	5295.0	-245.0	-695.0	2.00	180.00	-115.0	
6	5466.0	0.00	0.00	5377.3	-245.0	-695.0	0.00	0.00	-115.0	
7	6528.5	85.00	358.79	6090.7	408.6	-708.9	8.00	358.79	530.3	
8	6603.5	85.00	358.79	6097.3	483.3	-710.4	0.00	0.00	604.1	
9	6666.0	90.00	358.79	6100.0	545.7	-711.8	8.00	0.00	665.7	
10	10414.6	90.00	358.79	6100.0	4293.6	-791.2	0.00	0.00	4365.8	Cutthroat LC28-78HNB BHL 675'FNL, 660'FWL



WELL DETAILS: Cutthroat LC28-78HNB

	Ground Level: 4854.0		
0.0	0.0	1506890.51	3419266.48
		40.714990	-103.987510

Plan: APD - Rev 2 (Cutthroat LC28-78HNB/Original Drilling)

Created By: Shailey Jewell	Date: 13:51, January 30 2014
Checked: _____	Date: _____
Reviewed: _____	Date: _____
Approved: _____	Date: _____