

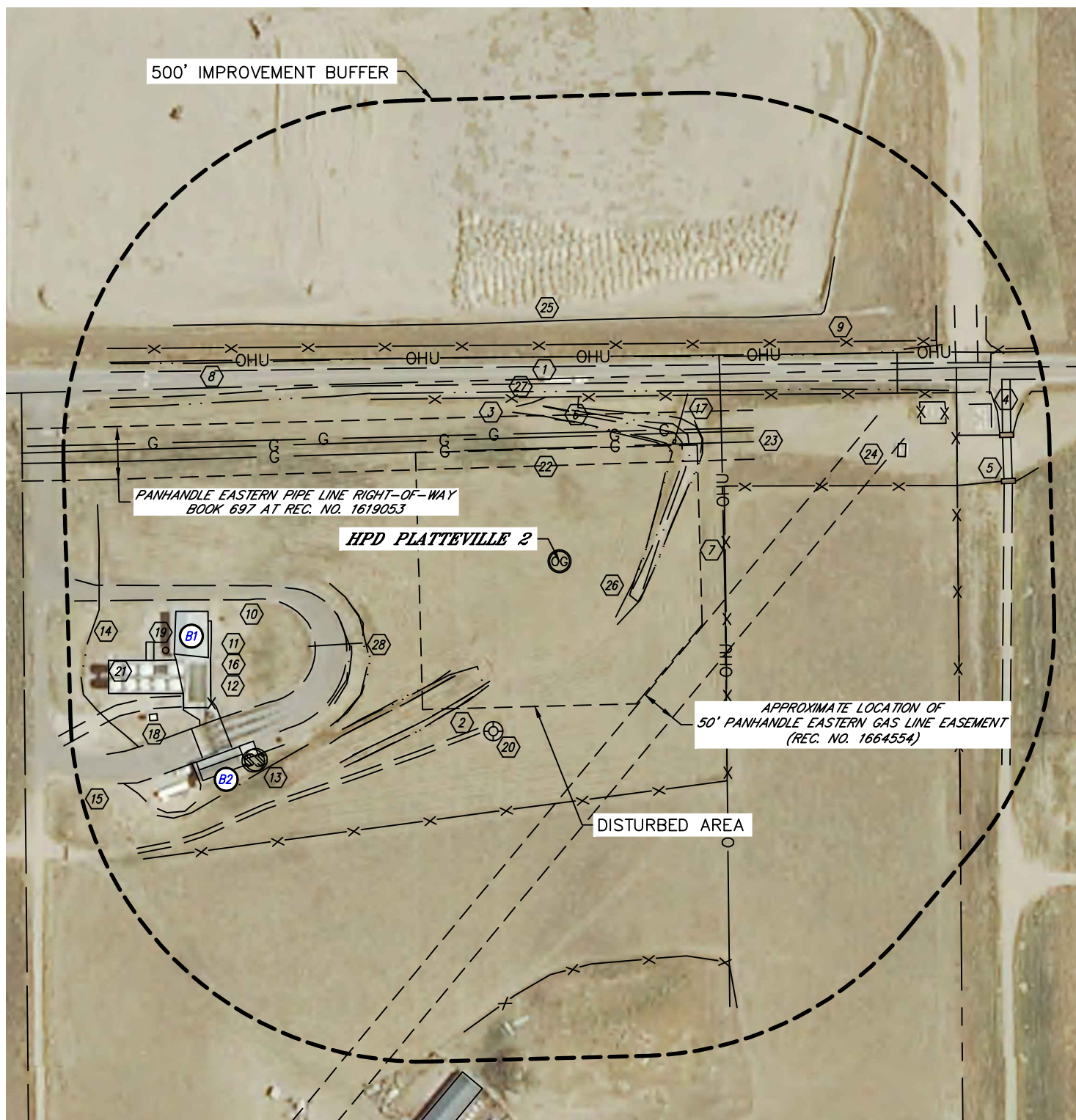


Lat40°, Inc. 1635 Foxtrail Drive, Suite 325 Loveland, CO 970-776-3321

LOCATION DRAWING

HPD PLATTEVILLE 2

SECTION: 24
TOWNSHIP: 3N
RANGE: 66W



SHEET 1 OF 2

DATE: 6/12/2014
PROJECT#: 2014050



LOCATION DRAWING

HPD PLATTEVILLE 2

SECTION: 24
TOWNSHIP: 3N
RANGE: 66W

IMPROVEMENTS:
(MEASURED FROM THE PROPOSED HPD PLATTEVILLE 2 WELL LOCATION)

- BU1 NO BUILDING UNITS WITHIN 500' IMPROVEMENT BUFFER
- B1 BUILDING B1 504' SW, B2 525' SW
- 1 COUNTY ROAD 32 253' N
- 2 ROAD 265', 321' & 570' SW, 630' E, 629' NE
- 3 FENCE 234' & 309' N, 235' & 566' E, 339' SE, 686' NE
- 4 GATE 637', 652' & 708' NE
- 5 CATTLE GUARD 637' & 650' NE
- 6 CONCRETE STRUCTURE 215' N, 233' NE, 501' & 504' SW
- 7 OVERHEAD UTILITY LINE 234' E, 291' N, 536', 614' & 655' NE
- 8 TELEPHONE PEDESTAL 587' NW
- 9 FIBER OPTIC VAULT 525' NE
- 10 ELECTRIC PEDESTAL 478' SW
- 11 ELECTRIC SERVICE 503' SW
- 12 LIGHT POLE 523', 564', 592' & 623' SW
- 13 SEPTIC MANHOLE 515' & 519' SW
- 14 FIRE DEPARTMENT CONNECTION WITH POSTS 643' SW
- 15 IRRIGATION WELL 744' SW
- 16 MONITORING WELL 510' & 533' SW, 643' & 653' NW, 585' NE
- 17 DRAINAGE PIPE 237' NE, 303' & 677' SW, 654' W
- 18 INJECTION WELL 611' SW
- 19 LIGHTNING TOWER 573' SW
- 20 EX. WELL HEAD 259' SW
- 21 EX. PRODUCTION EQUIPMENT 566' SW
- 22 APPROXIMATE GAS LINE 161', 177' & 183' N
- 23 GAS MARKER 324' NE (CLUSTER), 539' NE (CLUSTER), 661' NE, 629' NE (CLUSTER), 689' NE (CLUSTER), 688' SE, 668' NW (CLUSTER)
- 24 GAS VALVE 512' NE, 562' NE (CLUSTER), 631' NE (CLUSTER)
- 25 HYDRO VAC DISPOSAL AREA 342' N
- 26 CONTAINMENT BERM 107' SE, 197' & 220' SW
- 27 BARROW DITCH 212' & 242' N
- 28 DITCH 292' & 442' SW, 654' W

NEAREST CULTURAL ITEM:
BUILDING B1 ±504' SW, BUILDING UNIT BU1 ±911' SW, HIGH OCCUPANCY BUILDING UNIT 5280'+,
DESIGNATED OUTSIDE ACTIVITY AREA 5280'+, PUBLIC ROAD 253' N (CR 32),
ABOVE GROUND UTILITY 234' E, RAILROAD 5280'+, PROPERTY LINE 210' E
(DISTANCES MEASURED FROM THE CENTER OF THE PROPOSED WELL HEAD OR LIMITS OF THE
PROPOSED PRODUCTION FACILITY CLOSEST TO REFERENCED CULTURAL ITEM)

SHEET 2 OF 2

DATE: 6/12/2014
PROJECT#: 2014050