

BONANZA CREEK OIL COMPANY

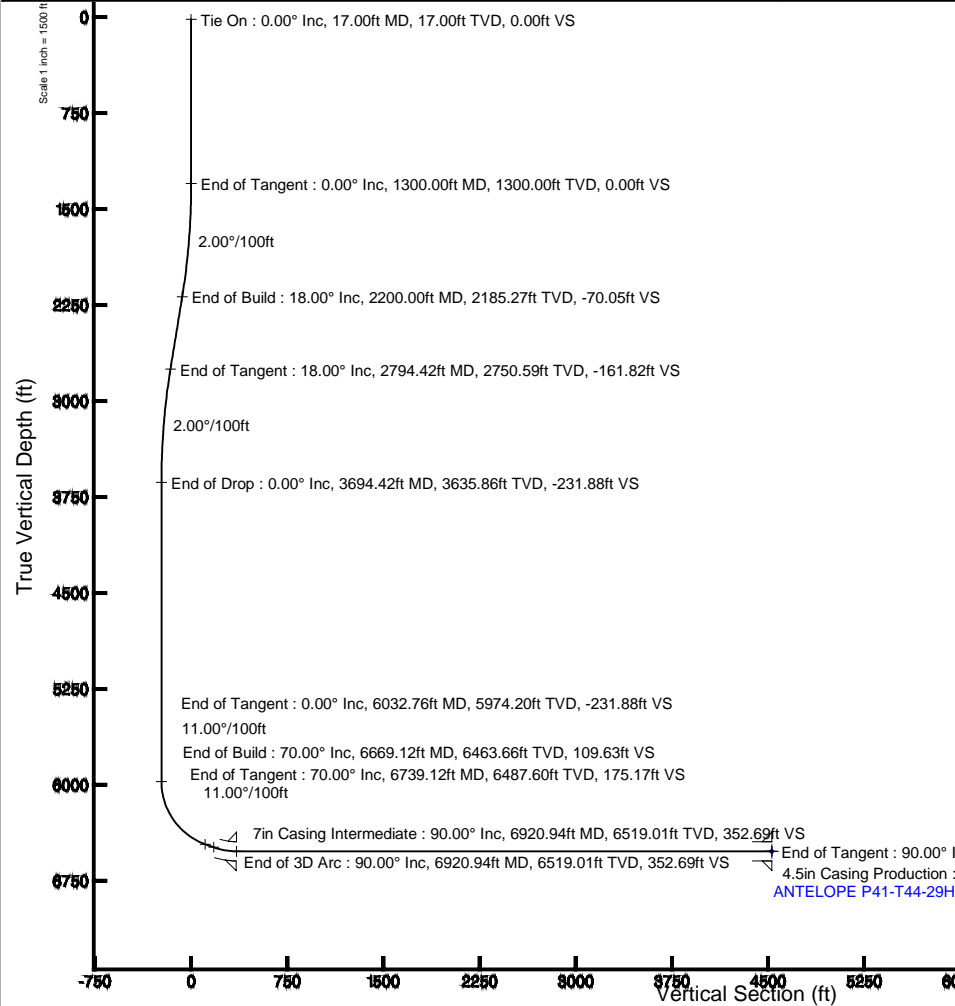
Location: COLORADO Slot: SLOT#04 ANTELOPE P41-T44-29HC (283'FNL & 1348'FEL,SEC.29)
 Field: WELD COUNTY Well: ANTELOPE P41-T44-29HC
 Facility: SEC.29-T5N-R62W Wellbore: ANTELOPE P41-T44-29HC PWB

Plot reference wellpath is ANTELOPE P41-T44-29HC (REV-A.0) PWP

True vertical depths are referenced to RIG (RKB)	Grid System: NAD83 / Lambert Colorado SP, Northern Zone (501), US feet
Measured depths are referenced to RIG (RKB)	North Reference: True north
RIG (RKB) to Mean Sea Level: 4657 feet	Scale: True distance
Mean Sea Level to Mud line (At Slot: SLOT#04 ANTELOPE P41-T44-29HC (283'FNL & 1348'FEL,SEC.29): 0 feet	Depths are in feet
Coordinates are in feet referenced to Slot	Created by: guesaler on 6/18/2014

Location Information

Facility Name	Grid East (US ft)	Grid North (US ft)	Latitude	Longitude		
SEC.29-T5N-R62W	3322386.186	1382332.492	40°22'37.668"N	104°20'34.152"W		
Slot	Local N (ft)	Local E (ft)	Grid East (US ft)	Grid North (US ft)	Latitude	Longitude
SLOT#04 ANTELOPE P41-T44-29HC (283'FNL & 1348'FEL,SEC.29)	-7.29	-58.51	3322327.779	1382324.444	40°22'37.596"N	104°20'34.908"W
RIG (RKB) to Mud line (At Slot: SLOT#04 ANTELOPE P41-T44-29HC (283'FNL & 1348'FEL,SEC.29)					4657ft	
Mean Sea Level to Mud line (At Slot: SLOT#04 ANTELOPE P41-T44-29HC (283'FNL & 1348'FEL,SEC.29)					0ft	
RIG (RKB) to Mean Sea Level					4657ft	



Azimuth 175.31° with reference 0.00 N, 0.00 E

Well Profile Data

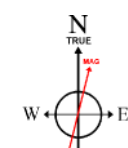
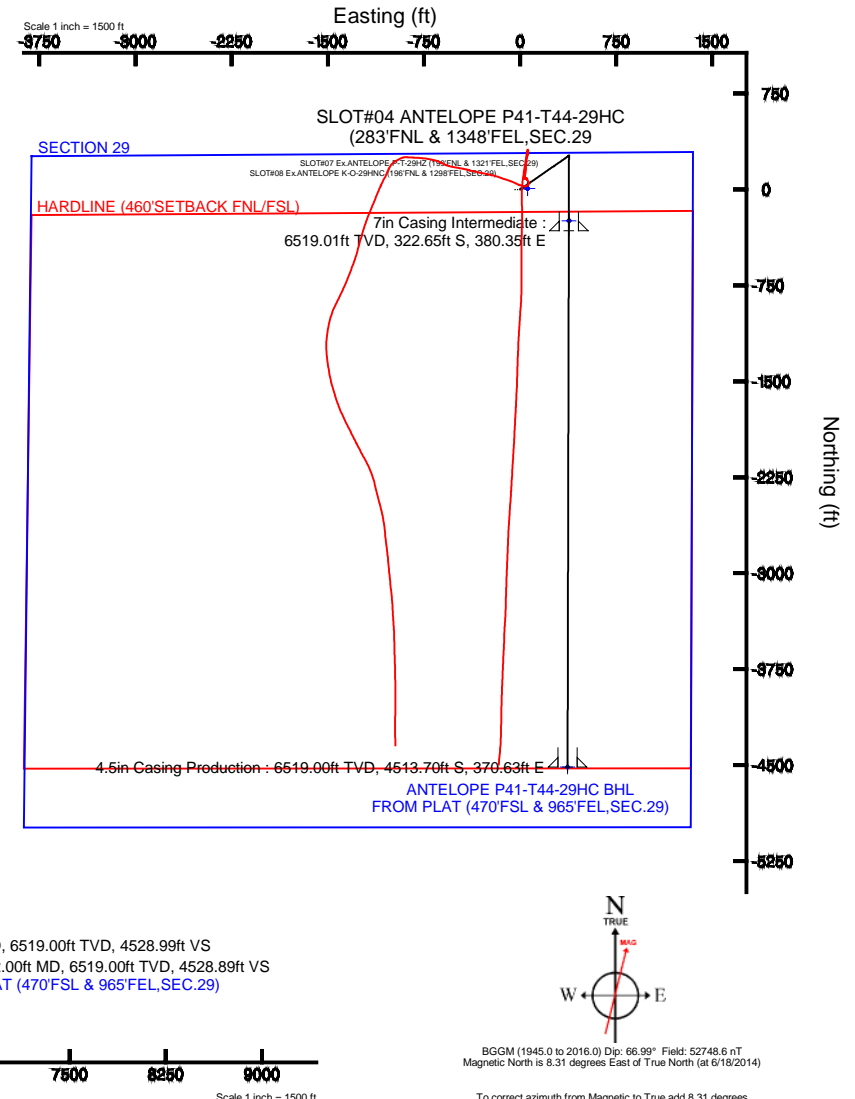
Design Comment	MD (ft)	Inc (°)	Az (°)	TVD (ft)	Local N (ft)	Local E (ft)	DLS (°/100ft)	VS (ft)
Tie On	17.00	0.000	55.331	17.00	0.00	0.00	0.00	0.00
End of Tangent	1300.00	0.000	55.331	1300.00	0.00	0.00	0.00	0.00
End of Build	2200.00	18.000	55.331	2185.27	79.76	115.32	2.00	-70.05
End of Tangent	2794.42	18.000	55.331	2750.59	184.24	266.39	0.00	-161.82
End of Drop	3694.42	0.000	180.133	3635.86	264.00	381.71	2.00	-231.88
End of Tangent	6032.76	0.000	180.133	5974.20	264.00	381.71	0.00	-231.88
End of Build	6669.12	70.000	180.133	6463.66	-78.72	380.91	11.00	109.63
End of Tangent	6739.12	70.000	180.133	6487.60	-144.50	380.76	0.00	175.17
End of 3D Arc	6920.94	90.000	180.133	6519.01	-322.65	380.35	11.00	352.69
End of Tangent	11112.10	90.000	180.133	6519.00	-4513.80	370.63	0.00	4528.99

Survey Program

Start MD (ft)	End MD (ft)	Tool	Model	Log Name/Comment	Wellbore
17.00	12000.00	NavTrak	NavTrak (Standard)		ANTELOPE P41-T44-29HC PWB

Bottom Hole Location

MD (ft)	Inc (°)	Az (°)	TVD (ft)	Local N (ft)	Local E (ft)	Grid East (US ft)	Grid North (US ft)	Latitude	Longitude
11112.10	90.000	180.133	6519.00	-4513.80	370.63	3322757.25	1377816.06	40°21'52.992"N	104°20'30.120"W



BGGM (1945.0 to 2016.0) Dip: 66.99° Field: 52748.6 nT
 Magnetic North is 8.31 degrees East of True North (at 6/18/2014)
 To correct azimuth from Magnetic to True add 8.31 degrees





Planned Wellpath Report

ANTELOPE P41-T44-29HC (REV-A.0) PWP

Page 1 of 7



REFERENCE WELLPATH IDENTIFICATION

Operator	BONANZA CREEK OIL COMPANY	Slot	SLOT#04 ANTELOPE P41-T44-29HC (283'FNL & 1348'FEL,SEC.29)
Area	COLORADO	Well	ANTELOPE P41-T44-29HC
Field	WELD COUNTY	Wellbore	ANTELOPE P41-T44-29HC PWB
Facility	SEC.29-T5N-R62W		

REPORT SETUP INFORMATION

Projection System	NAD83 / Lambert Colorado SP, Northern Zone (501), US feet	Software System	WellArchitect® 4.0.0
North Reference	True	User	Guenaler
Scale	0.999959	Report Generated	6/18/2014 at 2:06:49 PM
Convergence at slot	n/a	Database/Source file	WA_Denver/ANTELOPE_P41-T44-29HC_PWB.xml

WELLPATH LOCATION

	Local coordinates		Grid coordinates		Geographic coordinates	
	North[ft]	East[ft]	Easting[US ft]	Northing[US ft]	Latitude	Longitude
Slot Location	-7.29	-58.51	3322327.78	1382324.44	40°22'37.596"N	104°20'34.908"W
Facility Reference Pt			3322386.19	1382332.49	40°22'37.668"N	104°20'34.152"W
Field Reference Pt			3327718.19	1377782.99	40°21'52.020"N	104°19'26.040"W

WELLPATH DATUM

Calculation method	Minimum curvature	RIG (RKB) to Facility Vertical Datum	4657.00ft
Horizontal Reference Pt	Slot	RIG (RKB) to Mean Sea Level	4657.00ft
Vertical Reference Pt	RIG (RKB)	RIG (RKB) to Mud Line at Slot (SLOT#04 ANTELOPE P41-T44-29HC (283'FNL & 1348'FEL,SEC.29)	4657.00ft
MD Reference Pt	RIG (RKB)	Section Origin	N 0.00, E 0.00 ft
Field Vertical Reference	Mean Sea Level	Section Azimuth	175.31°



Planned Wellpath Report

ANTELOPE P41-T44-29HC (REV-A.0) PWP

Page 2 of 7



REFERENCE WELLPATH IDENTIFICATION			
Operator	BONANZA CREEK OIL COMPANY	Slot	SLOT#04 ANTELOPE P41-T44-29HC (283'FNL & 1348'FEL,SEC.29
Area	COLORADO	Well	ANTELOPE P41-T44-29HC
Field	WELD COUNTY	Wellbore	ANTELOPE P41-T44-29HC PWB
Facility	SEC.29-T5N-R62W		

WELLPATH DATA (121 stations) † = interpolated/extrapolated station										
MD [ft]	Inclination [°]	Azimuth [°]	TVD [ft]	Vert Sect [ft]	North [ft]	East [ft]	Latitude	Longitude	DLS [°/100ft]	Comments
0.00†	0.000	55.331	0.00	0.00	0.00	0.00	40°22'37.596"N	104°20'34.908"W	0.00	
17.00	0.000	55.331	17.00	0.00	0.00	0.00	40°22'37.596"N	104°20'34.908"W	0.00	Tie On
117.00†	0.000	55.331	117.00	0.00	0.00	0.00	40°22'37.596"N	104°20'34.908"W	0.00	
217.00†	0.000	55.331	217.00	0.00	0.00	0.00	40°22'37.596"N	104°20'34.908"W	0.00	
317.00†	0.000	55.331	317.00	0.00	0.00	0.00	40°22'37.596"N	104°20'34.908"W	0.00	
417.00†	0.000	55.331	417.00	0.00	0.00	0.00	40°22'37.596"N	104°20'34.908"W	0.00	
517.00†	0.000	55.331	517.00	0.00	0.00	0.00	40°22'37.596"N	104°20'34.908"W	0.00	
617.00†	0.000	55.331	617.00	0.00	0.00	0.00	40°22'37.596"N	104°20'34.908"W	0.00	
717.00†	0.000	55.331	717.00	0.00	0.00	0.00	40°22'37.596"N	104°20'34.908"W	0.00	
817.00†	0.000	55.331	817.00	0.00	0.00	0.00	40°22'37.596"N	104°20'34.908"W	0.00	
917.00†	0.000	55.331	917.00	0.00	0.00	0.00	40°22'37.596"N	104°20'34.908"W	0.00	
1017.00†	0.000	55.331	1017.00	0.00	0.00	0.00	40°22'37.596"N	104°20'34.908"W	0.00	
1117.00†	0.000	55.331	1117.00	0.00	0.00	0.00	40°22'37.596"N	104°20'34.908"W	0.00	
1217.00†	0.000	55.331	1217.00	0.00	0.00	0.00	40°22'37.596"N	104°20'34.908"W	0.00	
1300.00	0.000	55.331	1300.00	0.00	0.00	0.00	40°22'37.596"N	104°20'34.908"W	0.00	End of Tangent
1317.00†	0.340	55.331	1317.00	-0.03	0.03	0.04	40°22'37.596"N	104°20'34.907"W	2.00	
1417.00†	2.340	55.331	1416.97	-1.19	1.36	1.96	40°22'37.609"N	104°20'34.883"W	2.00	
1517.00†	4.340	55.331	1516.79	-4.10	4.67	6.76	40°22'37.642"N	104°20'34.821"W	2.00	
1617.00†	6.340	55.331	1616.35	-8.75	9.97	14.41	40°22'37.694"N	104°20'34.722"W	2.00	
1717.00†	8.340	55.331	1715.53	-15.14	17.23	24.92	40°22'37.766"N	104°20'34.586"W	2.00	
1817.00†	10.340	55.331	1814.20	-23.24	26.46	38.26	40°22'37.858"N	104°20'34.414"W	2.00	
1917.00†	12.340	55.331	1912.24	-33.07	37.65	54.44	40°22'37.968"N	104°20'34.205"W	2.00	
2017.00†	14.340	55.331	2009.54	-44.59	50.77	73.41	40°22'38.098"N	104°20'33.959"W	2.00	
2117.00†	16.340	55.331	2105.97	-57.81	65.82	95.17	40°22'38.246"N	104°20'33.678"W	2.00	
2200.00	18.000	55.331	2185.27	-70.05	79.76	115.32	40°22'38.384"N	104°20'33.418"W	2.00	End of Build
2217.00†	18.000	55.331	2201.44	-72.68	82.75	119.64	40°22'38.414"N	104°20'33.362"W	0.00	
2317.00†	18.000	55.331	2296.54	-88.12	100.32	145.05	40°22'38.587"N	104°20'33.034"W	0.00	
2417.00†	18.000	55.331	2391.65	-103.56	117.90	170.47	40°22'38.761"N	104°20'32.705"W	0.00	
2517.00†	18.000	55.331	2486.75	-118.99	135.48	195.89	40°22'38.935"N	104°20'32.377"W	0.00	
2617.00†	18.000	55.331	2581.86	-134.43	153.06	221.30	40°22'39.108"N	104°20'32.049"W	0.00	



Planned Wellpath Report

ANTELOPE P41-T44-29HC (REV-A.0) PWP

Page 3 of 7



REFERENCE WELLPATH IDENTIFICATION			
Operator	BONANZA CREEK OIL COMPANY	Slot	SLOT#04 ANTELOPE P41-T44-29HC (283'FNL & 1348'FEL,SEC.29
Area	COLORADO	Well	ANTELOPE P41-T44-29HC
Field	WELD COUNTY	Wellbore	ANTELOPE P41-T44-29HC PWB
Facility	SEC.29-T5N-R62W		

WELLPATH DATA (121 stations) † = interpolated/extrapolated station										
MD [ft]	Inclination [°]	Azimuth [°]	TVD [ft]	Vert Sect [ft]	North [ft]	East [ft]	Latitude	Longitude	DLS [°/100ft]	Comments
2717.00†	18.000	55.331	2676.96	-149.87	170.63	246.72	40°22'39.282"N	104°20'31.720"W	0.00	
2794.42	18.000	55.331	2750.59	-161.82	184.24	266.39	40°22'39.417"N	104°20'31.466"W	0.00	End of Tangent
2817.00†	17.548	55.331	2772.10	-165.27	188.16	272.06	40°22'39.455"N	104°20'31.393"W	2.00	
2917.00†	15.548	55.331	2867.95	-179.50	204.37	295.49	40°22'39.615"N	104°20'31.090"W	2.00	
3017.00†	13.548	55.331	2964.74	-192.05	218.65	316.14	40°22'39.757"N	104°20'30.823"W	2.00	
3117.00†	11.548	55.331	3062.35	-202.90	231.01	334.01	40°22'39.879"N	104°20'30.592"W	2.00	
3217.00†	9.548	55.331	3160.65	-212.05	241.42	349.07	40°22'39.982"N	104°20'30.398"W	2.00	
3317.00†	7.548	55.331	3259.53	-219.47	249.88	361.29	40°22'40.065"N	104°20'30.240"W	2.00	
3417.00†	5.548	55.331	3358.88	-225.17	256.37	370.67	40°22'40.129"N	104°20'30.119"W	2.00	
3517.00†	3.548	55.331	3458.56	-229.13	260.88	377.19	40°22'40.174"N	104°20'30.034"W	2.00	
3617.00†	1.548	55.331	3558.45	-231.35	263.41	380.85	40°22'40.199"N	104°20'29.987"W	2.00	
3694.42	0.000	180.133	3635.86	-231.88	264.00	381.71	40°22'40.205"N	104°20'29.976"W	2.00	End of Drop
3717.00†	0.000	180.133	3658.44	-231.88	264.00	381.71	40°22'40.205"N	104°20'29.976"W	0.00	
3817.00†	0.000	180.133	3758.44	-231.88	264.00	381.71	40°22'40.205"N	104°20'29.976"W	0.00	
3917.00†	0.000	180.133	3858.44	-231.88	264.00	381.71	40°22'40.205"N	104°20'29.976"W	0.00	
4017.00†	0.000	180.133	3958.44	-231.88	264.00	381.71	40°22'40.205"N	104°20'29.976"W	0.00	
4117.00†	0.000	180.133	4058.44	-231.88	264.00	381.71	40°22'40.205"N	104°20'29.976"W	0.00	
4217.00†	0.000	180.133	4158.44	-231.88	264.00	381.71	40°22'40.205"N	104°20'29.976"W	0.00	
4317.00†	0.000	180.133	4258.44	-231.88	264.00	381.71	40°22'40.205"N	104°20'29.976"W	0.00	
4417.00†	0.000	180.133	4358.44	-231.88	264.00	381.71	40°22'40.205"N	104°20'29.976"W	0.00	
4517.00†	0.000	180.133	4458.44	-231.88	264.00	381.71	40°22'40.205"N	104°20'29.976"W	0.00	
4617.00†	0.000	180.133	4558.44	-231.88	264.00	381.71	40°22'40.205"N	104°20'29.976"W	0.00	
4717.00†	0.000	180.133	4658.44	-231.88	264.00	381.71	40°22'40.205"N	104°20'29.976"W	0.00	
4817.00†	0.000	180.133	4758.44	-231.88	264.00	381.71	40°22'40.205"N	104°20'29.976"W	0.00	
4917.00†	0.000	180.133	4858.44	-231.88	264.00	381.71	40°22'40.205"N	104°20'29.976"W	0.00	
5017.00†	0.000	180.133	4958.44	-231.88	264.00	381.71	40°22'40.205"N	104°20'29.976"W	0.00	
5117.00†	0.000	180.133	5058.44	-231.88	264.00	381.71	40°22'40.205"N	104°20'29.976"W	0.00	
5217.00†	0.000	180.133	5158.44	-231.88	264.00	381.71	40°22'40.205"N	104°20'29.976"W	0.00	
5317.00†	0.000	180.133	5258.44	-231.88	264.00	381.71	40°22'40.205"N	104°20'29.976"W	0.00	
5417.00†	0.000	180.133	5358.44	-231.88	264.00	381.71	40°22'40.205"N	104°20'29.976"W	0.00	



Planned Wellpath Report

ANTELOPE P41-T44-29HC (REV-A.0) PWP

Page 4 of 7



REFERENCE WELLPATH IDENTIFICATION			
Operator	BONANZA CREEK OIL COMPANY	Slot	SLOT#04 ANTELOPE P41-T44-29HC (283'FNL & 1348'FEL,SEC.29
Area	COLORADO	Well	ANTELOPE P41-T44-29HC
Field	WELD COUNTY	Wellbore	ANTELOPE P41-T44-29HC PWB
Facility	SEC.29-T5N-R62W		

WELLPATH DATA (121 stations) † = interpolated/extrapolated station										
MD [ft]	Inclination [°]	Azimuth [°]	TVD [ft]	Vert Sect [ft]	North [ft]	East [ft]	Latitude	Longitude	DLS [°/100ft]	Comments
5517.00†	0.000	180.133	5458.44	-231.88	264.00	381.71	40°22'40.205"N	104°20'29.976"W	0.00	
5617.00†	0.000	180.133	5558.44	-231.88	264.00	381.71	40°22'40.205"N	104°20'29.976"W	0.00	
5717.00†	0.000	180.133	5658.44	-231.88	264.00	381.71	40°22'40.205"N	104°20'29.976"W	0.00	
5817.00†	0.000	180.133	5758.44	-231.88	264.00	381.71	40°22'40.205"N	104°20'29.976"W	0.00	
5917.00†	0.000	180.133	5858.44	-231.88	264.00	381.71	40°22'40.205"N	104°20'29.976"W	0.00	
6017.00†	0.000	180.133	5958.44	-231.88	264.00	381.71	40°22'40.205"N	104°20'29.976"W	0.00	
6032.76	0.000	180.133	5974.20	-231.88	264.00	381.71	40°22'40.205"N	104°20'29.976"W	0.00	End of Tangent
6117.00†	9.267	180.133	6058.08	-225.10	257.20	381.69	40°22'40.138"N	104°20'29.976"W	11.00	
6217.00†	20.267	180.133	6154.63	-199.74	231.75	381.64	40°22'39.886"N	104°20'29.977"W	11.00	
6317.00†	31.267	180.133	6244.54	-156.49	188.35	381.53	40°22'39.457"N	104°20'29.978"W	11.00	
6417.00†	42.267	180.133	6324.53	-96.94	128.59	381.40	40°22'38.867"N	104°20'29.980"W	11.00	
6517.00†	53.267	180.133	6391.64	-23.28	54.66	381.22	40°22'38.136"N	104°20'29.982"W	11.00	
6617.00†	64.267	180.133	6443.41	61.80	-30.72	381.03	40°22'37.292"N	104°20'29.985"W	11.00	
6669.12	70.000	180.133	6463.66	109.63	-78.72	380.91	40°22'36.818"N	104°20'29.986"W	11.00	End of Build
6717.00†	70.000	180.133	6480.04	154.46	-123.71	380.81	40°22'36.373"N	104°20'29.988"W	0.00	
6739.12	70.000	180.133	6487.60	175.17	-144.50	380.76	40°22'36.168"N	104°20'29.988"W	0.00	End of Tangent
6817.00†	78.567	180.133	6508.68	249.81	-219.40	380.59	40°22'35.428"N	104°20'29.990"W	11.00	
6917.00†	89.567	180.133	6519.00	348.77	-318.71	380.36	40°22'34.447"N	104°20'29.993"W	11.00	
6920.94	90.000	180.133	6519.01	352.69	-322.65	380.35	40°22'34.408"N	104°20'29.994"W	11.00	End of 3D Arc
7017.00†	90.000	180.133	6519.01	448.41	-418.71	380.13	40°22'33.458"N	104°20'29.996"W	0.00	
7117.00†	90.000	180.133	6519.01	548.06	-518.71	379.89	40°22'32.470"N	104°20'29.999"W	0.00	
7217.00†	90.000	180.133	6519.01	647.70	-618.71	379.66	40°22'31.482"N	104°20'30.003"W	0.00	
7317.00†	90.000	180.133	6519.01	747.35	-718.71	379.43	40°22'30.494"N	104°20'30.006"W	0.00	
7417.00†	90.000	180.133	6519.01	846.99	-818.71	379.20	40°22'29.506"N	104°20'30.009"W	0.00	
7517.00†	90.000	180.133	6519.01	946.64	-918.71	378.97	40°22'28.518"N	104°20'30.012"W	0.00	
7617.00†	90.000	180.133	6519.01	1046.28	-1018.71	378.73	40°22'27.529"N	104°20'30.015"W	0.00	
7717.00†	90.000	180.133	6519.01	1145.93	-1118.71	378.50	40°22'26.541"N	104°20'30.018"W	0.00	
7817.00†	90.000	180.133	6519.01	1245.57	-1218.71	378.27	40°22'25.553"N	104°20'30.021"W	0.00	
7917.00†	90.000	180.133	6519.01	1345.22	-1318.71	378.04	40°22'24.565"N	104°20'30.024"W	0.00	
8017.00†	90.000	180.133	6519.01	1444.86	-1418.71	377.81	40°22'23.577"N	104°20'30.027"W	0.00	



Planned Wellpath Report

ANTELOPE P41-T44-29HC (REV-A.0) PWP

Page 5 of 7



REFERENCE WELLPATH IDENTIFICATION			
Operator	BONANZA CREEK OIL COMPANY	Slot	SLOT#04 ANTELOPE P41-T44-29HC (283'FNL & 1348'FEL,SEC.29
Area	COLORADO	Well	ANTELOPE P41-T44-29HC
Field	WELD COUNTY	Wellbore	ANTELOPE P41-T44-29HC PWB
Facility	SEC.29-T5N-R62W		

WELLPATH DATA (121 stations) † = interpolated/extrapolated station										
MD [ft]	Inclination [°]	Azimuth [°]	TVD [ft]	Vert Sect [ft]	North [ft]	East [ft]	Latitude	Longitude	DLS [°/100ft]	Comments
8117.00†	90.000	180.133	6519.01	1544.51	-1518.71	377.57	40°22'22.589"N	104°20'30.030"W	0.00	
8217.00†	90.000	180.133	6519.01	1644.16	-1618.71	377.34	40°22'21.600"N	104°20'30.033"W	0.00	
8317.00†	90.000	180.133	6519.01	1743.80	-1718.71	377.11	40°22'20.612"N	104°20'30.036"W	0.00	
8417.00†	90.000	180.133	6519.01	1843.45	-1818.70	376.88	40°22'19.624"N	104°20'30.039"W	0.00	
8517.00†	90.000	180.133	6519.01	1943.09	-1918.70	376.65	40°22'18.636"N	104°20'30.042"W	0.00	
8617.00†	90.000	180.133	6519.01	2042.74	-2018.70	376.41	40°22'17.648"N	104°20'30.045"W	0.00	
8717.00†	90.000	180.133	6519.01	2142.38	-2118.70	376.18	40°22'16.660"N	104°20'30.048"W	0.00	
8817.00†	90.000	180.133	6519.01	2242.03	-2218.70	375.95	40°22'15.671"N	104°20'30.051"W	0.00	
8917.00†	90.000	180.133	6519.01	2341.67	-2318.70	375.72	40°22'14.683"N	104°20'30.054"W	0.00	
9017.00†	90.000	180.133	6519.01	2441.32	-2418.70	375.49	40°22'13.695"N	104°20'30.057"W	0.00	
9117.00†	90.000	180.133	6519.01	2540.96	-2518.70	375.25	40°22'12.707"N	104°20'30.060"W	0.00	
9217.00†	90.000	180.133	6519.01	2640.61	-2618.70	375.02	40°22'11.719"N	104°20'30.063"W	0.00	
9317.00†	90.000	180.133	6519.01	2740.25	-2718.70	374.79	40°22'10.731"N	104°20'30.066"W	0.00	
9417.00†	90.000	180.133	6519.01	2839.90	-2818.70	374.56	40°22'09.742"N	104°20'30.069"W	0.00	
9517.00†	90.000	180.133	6519.01	2939.55	-2918.70	374.33	40°22'08.754"N	104°20'30.072"W	0.00	
9617.00†	90.000	180.133	6519.00	3039.19	-3018.70	374.10	40°22'07.766"N	104°20'30.075"W	0.00	
9717.00†	90.000	180.133	6519.00	3138.84	-3118.70	373.86	40°22'06.778"N	104°20'30.078"W	0.00	
9817.00†	90.000	180.133	6519.00	3238.48	-3218.70	373.63	40°22'05.790"N	104°20'30.081"W	0.00	
9917.00†	90.000	180.133	6519.00	3338.13	-3318.70	373.40	40°22'04.802"N	104°20'30.084"W	0.00	
10017.00†	90.000	180.133	6519.00	3437.77	-3418.70	373.17	40°22'03.813"N	104°20'30.087"W	0.00	
10117.00†	90.000	180.133	6519.00	3537.42	-3518.70	372.94	40°22'02.825"N	104°20'30.090"W	0.00	
10217.00†	90.000	180.133	6519.00	3637.06	-3618.70	372.70	40°22'01.837"N	104°20'30.093"W	0.00	
10317.00†	90.000	180.133	6519.00	3736.71	-3718.70	372.47	40°22'00.849"N	104°20'30.096"W	0.00	
10417.00†	90.000	180.133	6519.00	3836.35	-3818.70	372.24	40°21'59.861"N	104°20'30.099"W	0.00	
10517.00†	90.000	180.133	6519.00	3936.00	-3918.70	372.01	40°21'58.873"N	104°20'30.102"W	0.00	
10617.00†	90.000	180.133	6519.00	4035.64	-4018.70	371.78	40°21'57.884"N	104°20'30.105"W	0.00	
10717.00†	90.000	180.133	6519.00	4135.29	-4118.70	371.54	40°21'56.896"N	104°20'30.108"W	0.00	
10817.00†	90.000	180.133	6519.00	4234.93	-4218.70	371.31	40°21'55.908"N	104°20'30.111"W	0.00	
10917.00†	90.000	180.133	6519.00	4334.58	-4318.70	371.08	40°21'54.920"N	104°20'30.114"W	0.00	
11017.00†	90.000	180.133	6519.00	4434.23	-4418.70	370.85	40°21'53.932"N	104°20'30.117"W	0.00	



Planned Wellpath Report

ANTELOPE P41-T44-29HC (REV-A.0) PWP

Page 6 of 7



REFERENCE WELLPATH IDENTIFICATION

Operator	BONANZA CREEK OIL COMPANY	Slot	SLOT#04 ANTELOPE P41-T44-29HC (283'FNL & 1348'FEL,SEC.29)
Area	COLORADO	Well	ANTELOPE P41-T44-29HC
Field	WELD COUNTY	Wellbore	ANTELOPE P41-T44-29HC PWB
Facility	SEC.29-T5N-R62W		

WELLPATH DATA (121 stations)

MD [ft]	Inclination [°]	Azimuth [°]	TVD [ft]	Vert Sect [ft]	North [ft]	East [ft]	Latitude	Longitude	DLS [°/100ft]	Comments
11112.10	90.000	180.133	6519.00 ¹	4528.99	-4513.80	370.63	40°21'52.992"N	104°20'30.120"W	0.00	End of Tangent

HOLE & CASING SECTIONS -

Ref Wellbore: ANTELOPE P41-T44-29HC PWB Ref Wellpath: ANTELOPE P41-T44-29HC (REV-A.0) PWP

String/Diameter	Start MD [ft]	End MD [ft]	Interval [ft]	Start TVD [ft]	End TVD [ft]	Start N/S [ft]	Start E/W [ft]	End N/S [ft]	End E/W [ft]
7in Casing Intermediate	17.00	6920.94	6903.94	17.00	6519.01	0.00	0.00	-322.65	380.35
4.5in Casing Production	17.00	11112.00	11095.00	17.00	6519.00	0.00	0.00	-4513.70	370.63

TARGETS

Name	MD [ft]	TVD [ft]	North [ft]	East [ft]	Grid East [US ft]	Grid North [US ft]	Latitude	Longitude	Shape
ANTELOPE U41-Y44-29HC SECTION 29		0.00	7.29	58.51	3322386.19	1382332.49	40°22'37.668"N	104°20'34.152"W	polygon
ANTELOPE U41-Y44-29HC HARDLINE (460'SETBACK FNL/FSL)		6502.00	7.29	58.51	3322386.19	1382332.49	40°22'37.668"N	104°20'34.152"W	polygon
1) ANTELOPE P41-T44-29HC BHL FROM PLAT (470'FSL & 965'FEL,SEC.29)	11112.10	6519.00	-4513.80	370.63	3322757.25	1377816.06	40°21'52.992"N	104°20'30.120"W	point
ANTELOPE P41-T44-29HC TARGET		6519.00	-244.09	381.71	3322712.62	1382085.37	40°22'35.184"N	104°20'29.976"W	point

SURVEY PROGRAM - Ref Wellbore: ANTELOPE P41-T44-29HC PWB Ref Wellpath: ANTELOPE P41-T44-29HC (REV-A.0) PWP

Start MD [ft]	End MD [ft]	Positional Uncertainty Model	Log Name/Comment	Wellbore
17.00	12000.00	NaviTrak (Standard)		ANTELOPE P41-T44-29HC PWB



Planned Wellpath Report

ANTELOPE P41-T44-29HC (REV-A.0) PWP

Page 7 of 7



REFERENCE WELLPATH IDENTIFICATION			
Operator	BONANZA CREEK OIL COMPANY	Slot	SLOT#04 ANTELOPE P41-T44-29HC (283'FNL & 1348'FEL,SEC.29
Area	COLORADO	Well	ANTELOPE P41-T44-29HC
Field	WELD COUNTY	Wellbore	ANTELOPE P41-T44-29HC PWB
Facility	SEC.29-T5N-R62W		

DESIGN COMMENTS				
MD [ft]	Inclination [°]	Azimuth [°]	TVD [ft]	Comment
17.00	0.000	55.331	17.00	Tie On
1300.00	0.000	55.331	1300.00	End of Tangent
2200.00	18.000	55.331	2185.27	End of Build
2794.42	18.000	55.331	2750.59	End of Tangent
3694.42	0.000	180.133	3635.86	End of Drop
6032.76	0.000	180.133	5974.20	End of Tangent
6669.12	70.000	180.133	6463.66	End of Build
6739.12	70.000	180.133	6487.60	End of Tangent
6920.94	90.000	180.133	6519.01	End of 3D Arc
11112.10	90.000	180.133	6519.00	End of Tangent