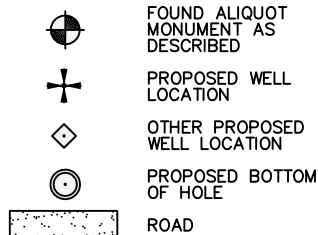


# WELL LOCATION EXHIBIT

LOCATED IN THE SOUTHEAST QUARTER OF SECTION 1, TOWNSHIP 5 NORTH, RANGE 67  
WEST OF THE 6TH PRINCIPAL MERIDIAN, COUNTY OF WELD, STATE OF COLORADO

## Legend

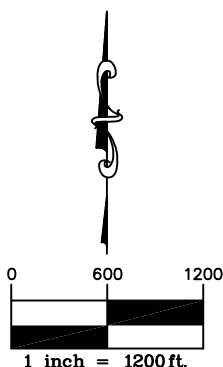


## Proposed Surface Hole Data

(NAD 83)  
LATITUDE: 40.42340 N  
LONGITUDE: -104.83362 W  
ELEVATION: 4877'  
PDOP: 2.1

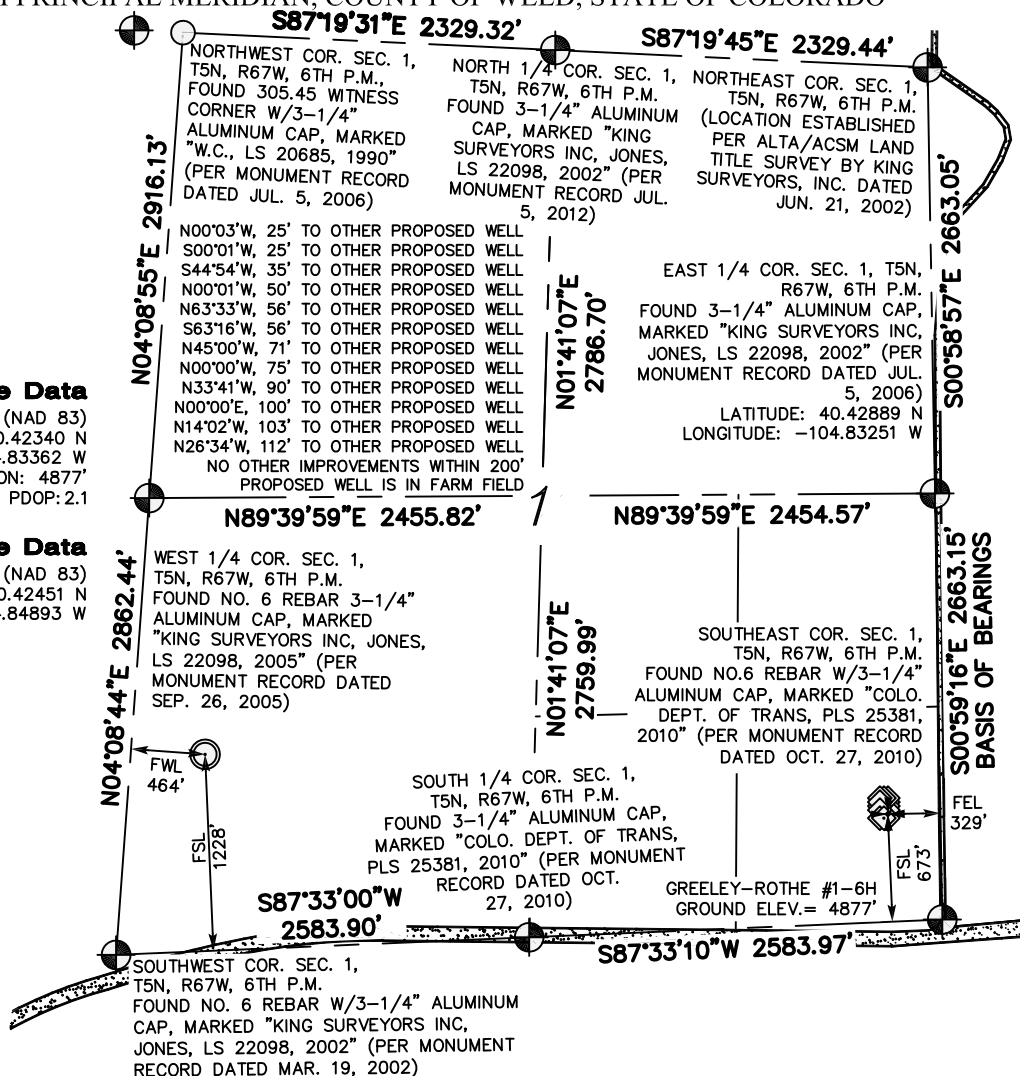
## Proposed Bottom of Hole Data

(NAD 83)  
LATITUDE: 40.42451 N  
LONGITUDE: -104.84893 W



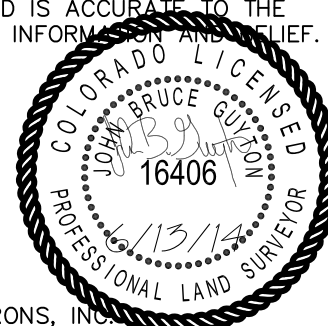
## Notes

1. BASIS OF BEARINGS: GPS DERIVED BEARINGS BASED ON A BEARING OF S00°59'16"E ALONG THE EAST LINE OF THE SOUTHEAST 1/4 OF SECTION 1, BETWEEN THE TWO FOUND MONUMENTS, AS SHOWN HEREON, ON APRIL 8, 2014, BY CHARLIE GAMET. COLORADO STATE PLANE COORDINATE SYSTEM, NORTH ZONE, NORTH AMERICAN DATUM 1983 (NAD83). ALL BEARINGS SHOWN HEREON ARE RELATIVE THERETO.
2. IN ACCORDANCE WITH A REQUEST FROM SUSI LARA-MESA OF KP KAUFFMAN, INC., FLATIRONS, INC. HAS DETERMINED THE LOCATION OF GREELEY-ROTHE #1-6H WELL SITE TO BE 673' FSL AND 329' FEL AS MEASURED AT NINETY (90) DEGREES FROM THE SECTION LINES OF SECTION 1, T5N, R67W, OF 6TH P.M., WELD COUNTY, CO.
3. THE WELL IS LOCATED IN THE SE1/4 OF THE SE1/4 OF SECTION 1.
4. ELEVATIONS ARE BASED UPON NAVD 88 DATUM.
5. ACCORDING TO COLORADO LAW YOU MUST COMMENCE ANY LEGAL ACTION BASED UPON ANY DEFECT IN THIS EXHIBIT WITHIN THREE YEARS AFTER YOU FIRST DISCOVER SUCH DEFECT. IN NO EVENT MAY ANY ACTION BASED UPON ANY DEFECT IN THIS EXHIBIT BE COMMENCED MORE THAN TEN YEARS FROM THE DATE OF THE CERTIFICATION SHOWN HEREON.



I, JOHN B. GUYTON, A LAND SURVEYOR LICENSED IN THE STATE OF COLORADO, HEREBY STATE FOR AND ON BEHALF OF FLATIRONS, INC., TO KP KAUFFMAN, INC., THAT THIS WELL LOCATION EXHIBIT IS NOT A LAND SURVEY PLAT OR IMPROVEMENT SURVEY PLAT AND WAS PREPARED BY ME OR UNDER MY RESPONSIBLE CHARGE AND IS ACCURATE TO THE BEST OF MY KNOWLEDGE, INFORMATION AND BELIEF.

JOHN B. GUYTON  
COLORADO P.L.S. #16406  
CHAIRMAN & CEO, FLATIRONS, INC.



JOB NUMBER:  
13-61,287 GR6  
DRAWN BY:  
E. DAVIS  
DATE: 4-7-2014  
REV: 4-25-2014  
REV: 6-13-2014

**Flatirons, Inc.**  
Surveying, Engineering & Geomatics

655 FOURTH AVE  
LONGMONT, CO 80501  
PH: (303) 776-1733  
FAX: (303) 776-4355  
www.FlatironsInc.com