

HALLIBURTON

Advanced Cement Evaluation and Casing Inspection

CAST-M Circumferential Acoustic Scanning Tool – Monoconductor

Client: WPX ENERGY
Well: STRAIT SG 332-22
Field: GRAND VALLEY
#31290
County: GARFIELD
State: CO

Analyst: D. Crawford III
Date: 8/28/2013
Location: Denver FRS
Phone: (303)675-4465

Don.Crawford2@Halliburton.com
DATA, RECOMMENDATIONS, INTERPRETATIONS LIMITATIONS

Because of the uncertainty of variable well conditions the necessity of relying on facts and supporting services furnished by others, Halliburton IS UNABLE TO GUARANTEE THE EFFECTIVENESS OF THE PRODUCTS, SUPPLIES OR MATERIALS, NOR THE RESULTS OF ANY TREATMENT OR SERVICE, NOR THE ACCURACY OF ANY CHART INTERPRETATION, RESEARCH ANALYSIS, JOB RECOMMENDATION OR OTHER DATA FURNISHED BY Halliburton. Halliburton personnel will use their best efforts in gathering such information and their best judgment in interpreting it, but Customer agrees that Halliburton shall not be liable for and Customer SHALL RELEASE, DEFEND AND INDEMNIFY Halliburton against any damages or liability arising from the use of such information even if such damages are contributed to or caused by the negligence, fault or strict liability of Halliburton.

Table of Contents

Table of Contents 2
Executive Summary 3
1. Well Intervention Objectives 3
2. Well Information..... 3
3. Logging Information 3
4. Conclusion 3
 Advanced Cement Evaluation: 3
 Figure 1: Free pipe 4
 Figure 2: Top of cement..... 5
 Figure 3: Lead and tail contact zone 6
Disclaimer 7

Executive Summary

1. Well Intervention Objectives

- **Ran Advanced Cement Evaluation and Casing Inspection**
Tools: CASTM-CBL-GR-CCL

2. Well Information

- Borehole Record
n/a
- Casing & Tubing Record
9.625",32.3# 0'-1330'
4.5",11.6# 0'-5800'

3. Logging Information

- Logged Date: August 19, 2013
- Logged Interval: 70'-5664'
- Log Engineer: R. Mackie

4. Conclusion

Advanced Cement Evaluation:

There is free pipe from surface to 226' (Figure 1). Top of cement occurs at 226' (Figure 2). The contact between lead and tail cements seems to occur at 3900' (figure 3). The bond from top of cement to the lead/tail contact seems to be fairly good while below the lead tail there is very good bond.

1125 17th Street, Denver, CO 80202

Confidential

Page 4

8/28/2013

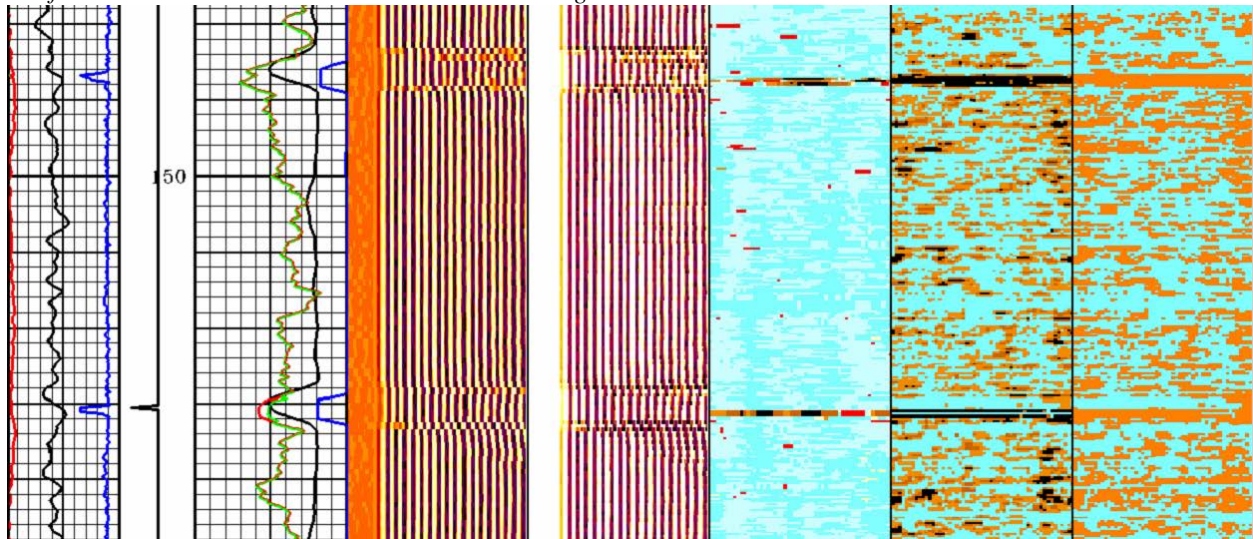


Figure 1: Free pipe

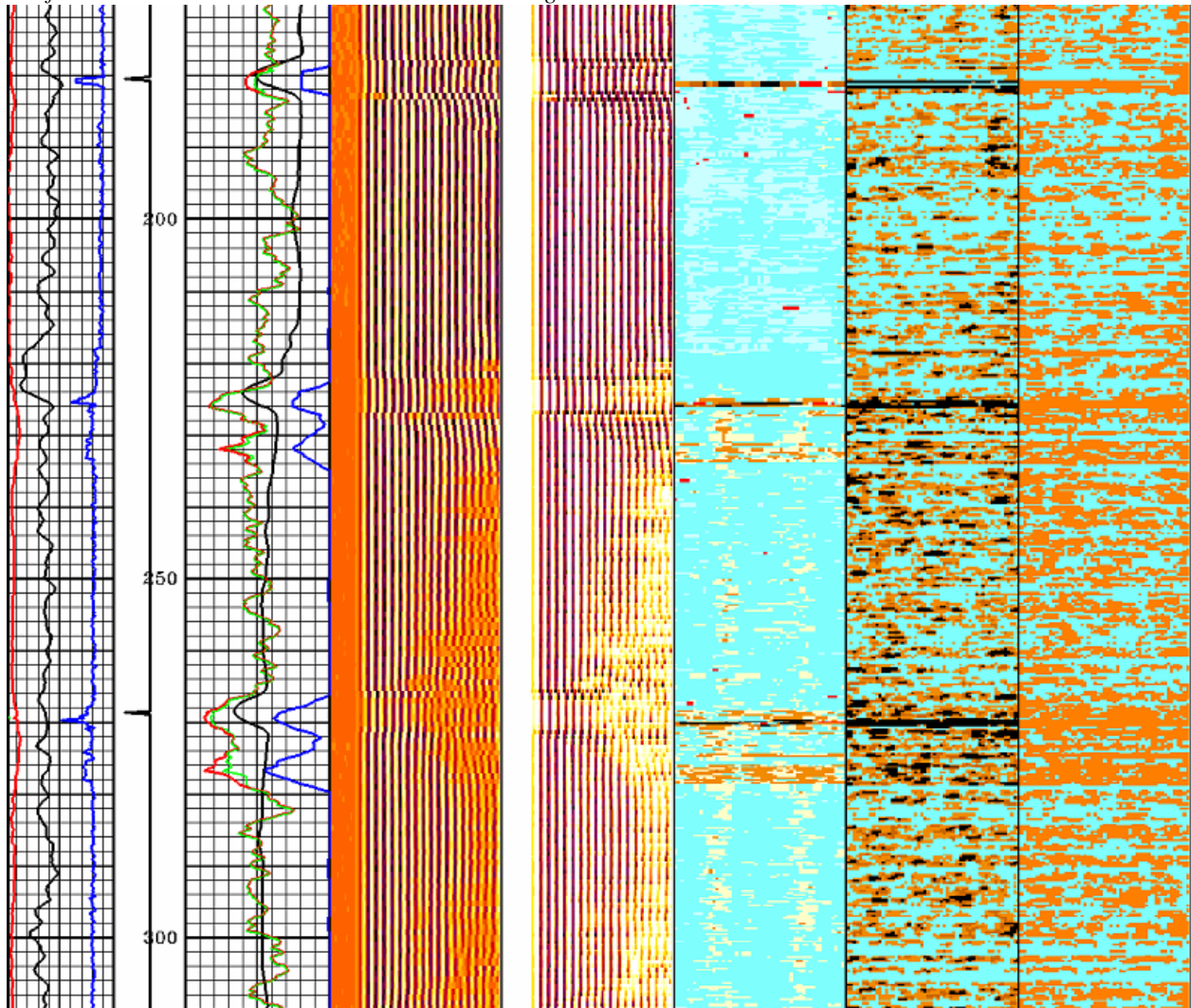


Figure 2: Top of cement

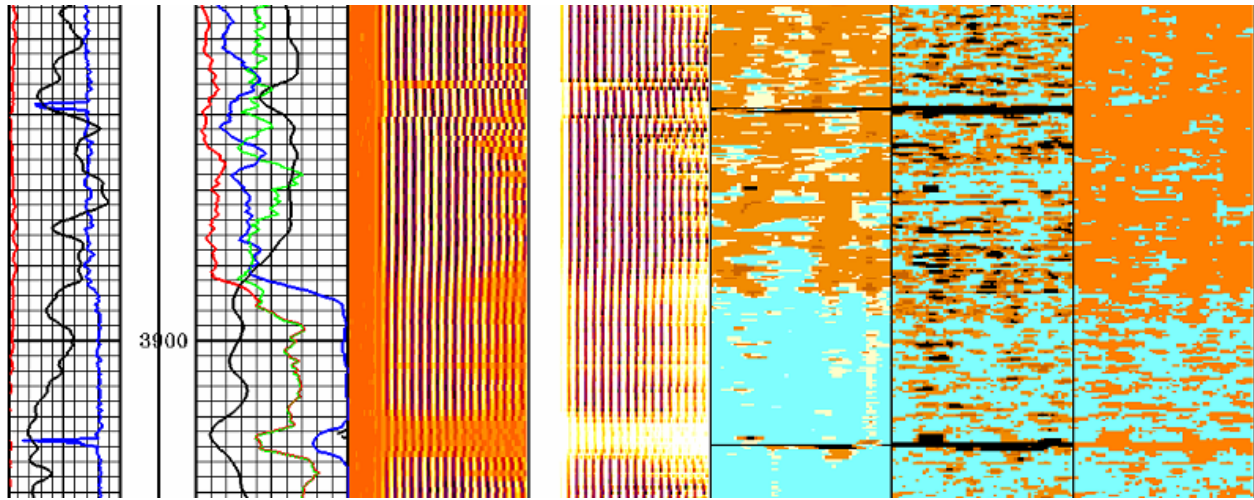


Figure 3: Lead and tail contact zone

Disclaimer

DATA, RECOMMENDATIONS, INTERPRETATIONS LIMITATIONS

Halliburton IS UNABLE TO GUARANTEE THE EFFECTIVENESS OF THE PRODUCTS, SUPPLIES OR MATERIALS, NOR THE RESULTS OF ANY TREATMENT OR SERVICE, NOR THE ACCURACY OF ANY CHART INTERPRETATION, RESEARCH ANALYSIS, JOB RECOMMENDATION OR OTHER DATA FURNISHED BY Halliburton. Halliburton personnel will use their best efforts in gathering such information and their best judgment in interpreting it, but Customer agrees that Halliburton shall not be liable for and Customer SHALL RELEASE, DEFEND AND INDEMNIFY Halliburton against any damages or liability arising from the use of such information even if such damages are contributed to or caused by the negligence, fault or strict liability of Halliburton.