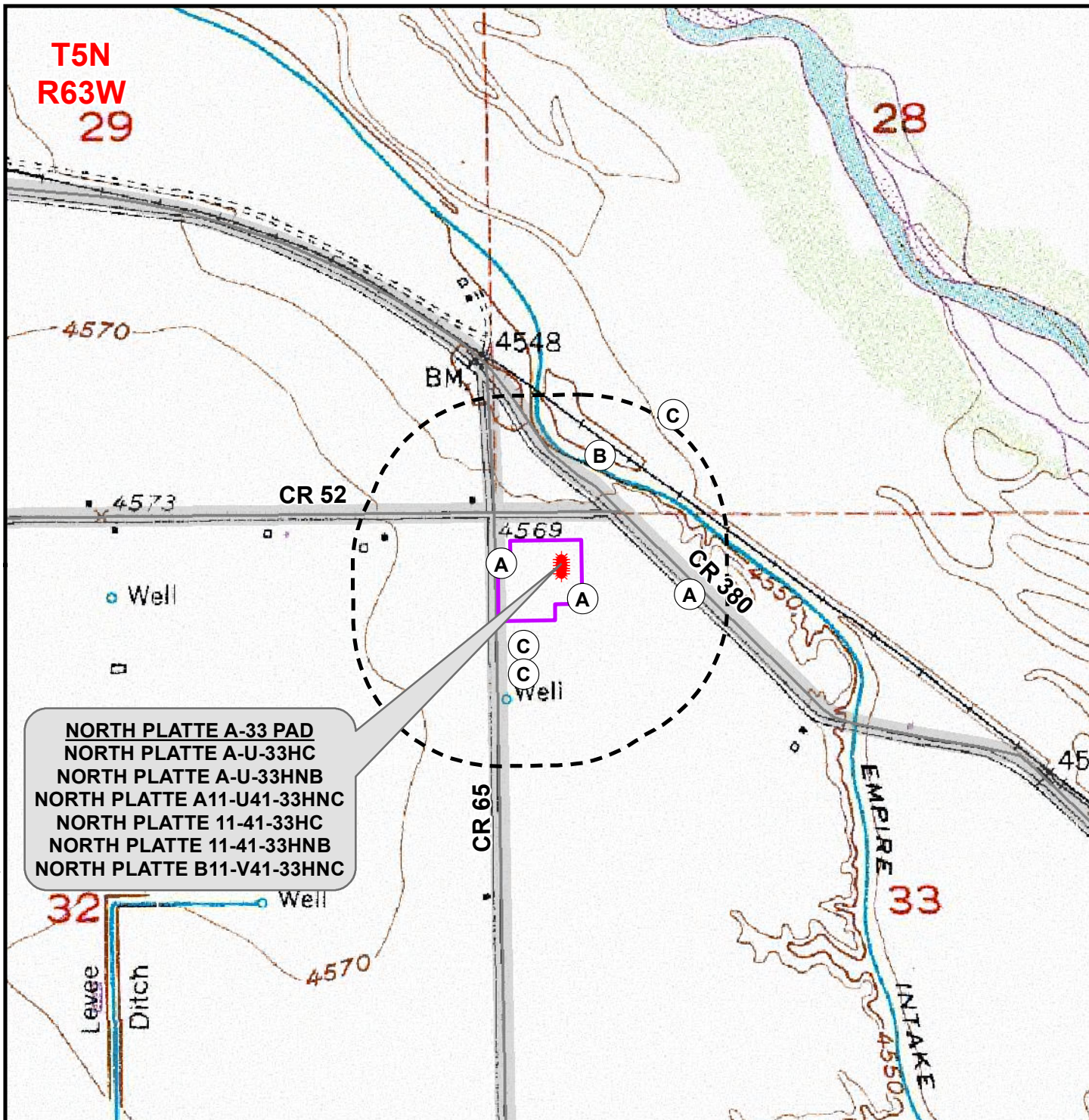


K:\BONANZA CREEK\2013\_04\_2014\_WELL\_STAKING\GIS\Maps\_ABC\NorthPlatte A-33\NorthPlatte A-33 Hydro.mxd 6/5/2014 3:41:07 PM



### Legend

- Well -Proposed
- 1,000ft Disturbance Buffer
- Disturbed Area

- A - IRRIGATION DITCH  $\pm 272$ ft SE,  $\pm 433$ ft W,  $\pm 272$ ft E
- B - EMPIRE INTAKE CANAL  $\pm 762$ ft NE
- C - POND  $\pm 523$ ft SW,  $\pm 654$ ft SW,  $\pm 1,235$ ft NE

\* All distances measured to reference well: NORTH PLATTE 11-41-33HC

### WELL PAD - NORTH PLATTE A-33

HYDROLOGY MAP  
NORTH PLATTE A-U-33HC, NORTH PLATTE A-U-33HNB  
NORTH PLATTE A11-U41-33HNC, NORTH PLATTE 11-41-33HC  
NORTH PLATTE 11-41-33HNB & NORTH PLATTE B11-V41-33HNC  
LOCATED IN NW1/4 NW1/4  
SECTION 33, T5N, R63W, 6th P.M.  
WELD COUNTY, COLORADO



**BONANZA  
CREEK**

410 17th Street, Suite 1400  
Denver, Colorado 80202



### CONSULTING, LLC

SHERIDAN OFFICE  
2155 North Main Street  
Sheridan, Wyoming 82801  
Phone 307-674-0609

LOVELAND OFFICE  
1635 Foxtail Drive, Suite 204  
Loveland, Colorado 80538  
Phone 970-776-4331



SCALE: 1" = 1,000ft

NAD83 CO-Nft

DRAWN: JELO

DATE: 8 Nov 2013

REVISED: TL

DATE: 6 June 2014