

- NOTE:
1. AFTER COMPLETION OF WELL PAD GRADING, PLATING MATERIAL WILL BE PLACED AT A DEPTH OF 4 INCHES AND COMPACTED USING MOBILE EQUIPMENT.
 2. EXISTING UTILITIES DISPLAYED ON THE GRADING PLAN ARE FOR REFERENCE PURPOSES ONLY. PRIOR TO CONSTRUCTION OR EARTHWORK, CONTRACTOR WILL BE RESPONSIBLE TO CALL FOR LOCATES: (800) 922-1987
 3. CENTER OF WELL PAD REFERENCED BELOW CORRESPONDS TO THE SURFACE LOCATION OF THE NORTH PLATTE 11-41-33HC WELL.

WELL PAD - NORTH PLATTE A-33 DESIGN SUMMARY

WELL PAD QUANTITIES AND DESIGN PARAMETERS

EXISTING GRADE @ CENTER OF WELL PAD = 4569.5'
FINISHED GRADE ELEVATION = 4569.4'
CUT SLOPES = 3:1
FILL SLOPES = 3:1
SHRINKAGE FACTOR = 1.10
SWELL FACTOR = 1.00
GRADED WELL PAD SURFACE AREA = 5.95 ACRES
TOTAL WELL PAD AREA = 6.05 ACRES
TOTAL DISTURBANCE AREA = 6.46 ACRES

WELL PAD QUANTITIES

TOTAL CUT FOR WELL PAD = 1,096 C.Y.
TOTAL FILL FOR WELL PAD = 1,096 C.Y.
TOPSOIL @ 6" DEPTH = 4,884 C.Y.
EXCESS MATERIAL = 0 C.Y.

PLATING MATERIAL VOLUME
TO BE ADDED TO WELL PAD = 3,200 C.Y.
(ASSUMING 4 INCHES DEPTH)

WELL PAD LEGEND

- EXISTING WELL LOCATION
- PROPOSED WELL LOCATION
- EXISTING CONTOURS (1' INTERVAL)
- PROPOSED CONTOURS (1' INTERVAL)
- EPL EXISTING PIPELINE
- PPL PROPOSED PIPELINE
- EXISTING FENCE



HORIZONTAL 0 50' 100' 1" = 100'
1' CONTOURS

SCALE: 1"=100' DATE: 11/8/13 SHEET NO:

REVISED: JFE 6/6/14 1 1 OF 2

WELL PAD - NORTH PLATTE A-33

WELL PAD - GRADING PLAN
NORTH PLATTE A-U-33HC, NORTH PLATTE A-U-33HNB,
NORTH PLATTE A11-U41-33HNC, NORTH PLATTE 11-41-33HC,
NORTH PLATTE 11-41-33HNB & NORTH PLATTE B11-V41-33HNC
LOCATED IN SECTION 33, T5N, R63W, 6TH P.M.
WELD COUNTY, COLORADO

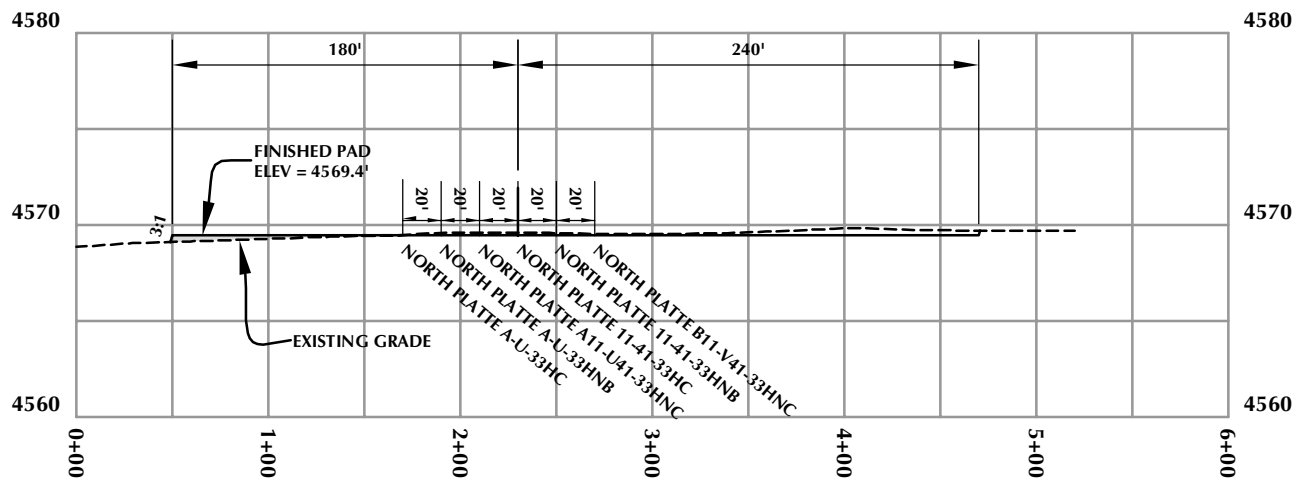
BONANZA CREEK
410 17th Street, Suite 1400
Denver, Colorado 80202



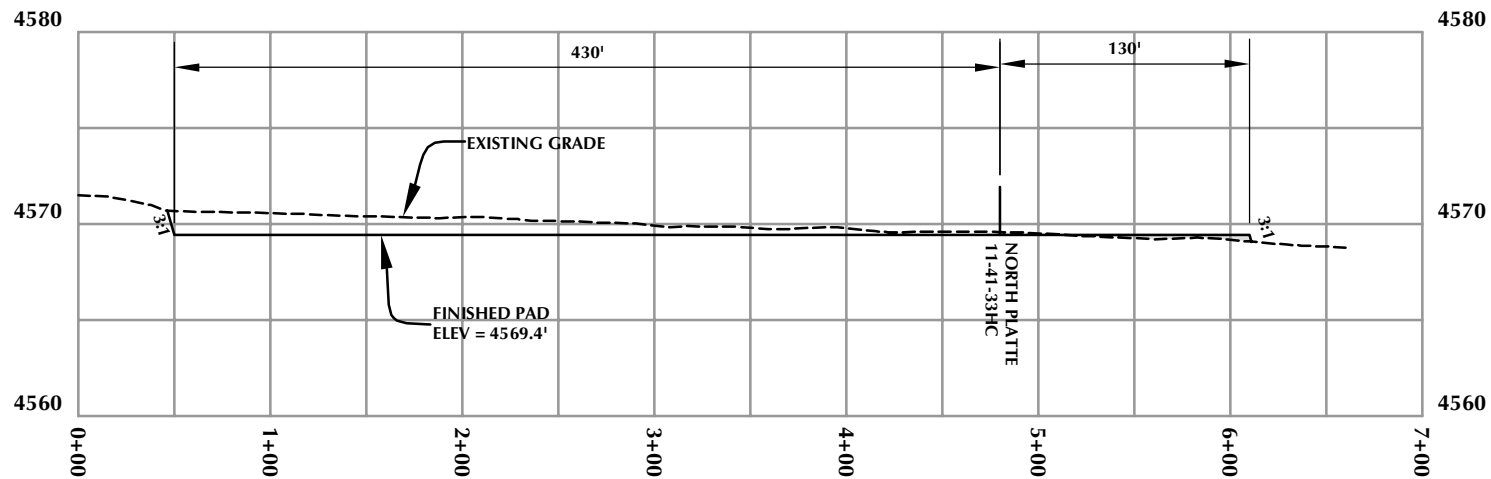
CONSULTING, LLC

LOVELAND OFFICE
1635 Foxtrail Drive, Suite 204
Loveland, Colorado 80538
Phone 970-776-4331

SHERIDAN OFFICE
2155 North Main Street
Sheridan, Wyoming 82801
Phone 307-674-0609



CROSS SECTION A-A'



CROSS SECTION B-B'

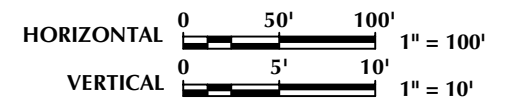
WELL PAD - NORTH PLATTE A-33

WELL PAD - CROSS SECTIONS
 NORTH PLATTE A-U-33HC, NORTH PLATTE A-U-33HNB,
 NORTH PLATTE A11-U41-33HNC, NORTH PLATTE 11-41-33HC,
 NORTH PLATTE 11-41-33HNB & NORTH PLATTE B11-V41-33HNC
 LOCATED IN SECTION 33, T5N, R63W, 6TH P.M.
 WELD COUNTY, COLORADO

BONANZA CREEK
 410 17th Street, Suite 1400
 Denver, Colorado 80202



CONSULTING, LLC
 2155 North Main Street
 Sheridan, Wyoming 82801
 Phone 307-674-0609
 Fax 307-674-0182



Scale: 1"=100'	Date: 11/8/13	SHEET NO:
REVISED:	RAL 6/6/14	2 2 OF 2